



Huddleston-Berry
Engineering & Testing, LLC

2789 Riverside Parkway
Grand Junction, Colorado 81501
Phone: 970-255-8005
Info@huddlestonberry.com

October 31, 2023
Project#01349-0001

Bowie Resources, LLC
43659 Bowie Road
Paonia, Colorado 81428

Attention: Mr. Basil Bear

Subject: Summary of Instrumentation Monitoring
3rd Quarter 2023
Bowie Coal Waste Disposal Area No. 2
Paonia, Colorado

Reference: *Summary of Instrumentation Monitoring, 2nd Quarter 2023, Bowie Coal Waste Disposal Area No. 2, Paonia, Colorado* by Huddleston-Berry Engineering & Testing, LLC for Bowie Resources, LLC, July 11, 2023.

Stability Evaluation, Technical Revision #85, Gob Pile #2 Drying Area, Bowie No. 2 Mine by Huddleston-Berry Engineering & Testing, LLC for Bowie Resources, LLC, June 3, 2014.

Dear Mr. Bear,

At the request of the Colorado Division of Reclamation, Mining and Safety (DRMS), Huddleston-Berry Engineering & Testing, LLC (HBET) prepared this letter regarding quarterly monitoring of vibrating wire piezometers and inclinometers at Coal Waste Disposal Area No. 2 (CWDA No. 2) at the Bowie mine near Paonia, Colorado. The intent of the monitoring was to detect significant changes in the pore water pressures or significant displacements within the coal waste which may impact the stability of the waste pile.

Inclinometers

In 2005, three inclinometers, designated BG05-04, BG05-05, and BG05-07, were installed at CWDA No. 2 through the coal refuse and into the native foundation soils. The inclinometers have been monitored quarterly since August 2005. The 3rd Quarter 2023 monitoring was completed by Buckhorn Engineering (Buckhorn) on September 26th, 2023. The monitoring report prepared by Buckhorn includes a site plan showing the locations of the inclinometers and cumulative displacement curves relative to the baseline readings in 2005. Axis "A" reflects deformation with depth in the direction of anticipated movement perpendicular to the face of the gob. Axis "B" reflects deformation with depth parallel to the face of the gob.

Discussion of Inclinometer Monitoring

The latest inclinometer readings indicate no major movements since the last quarterly reading. In general, the 3rd Quarter 2023 monitoring data does not provide any indication of instability in CWDA No. 2.

Vibrating Wire Piezometers

Between 2005 and 2012, a total of ten vibrating wire piezometers were installed in CWDA No. 2. However, several of the piezometers have been damaged or have otherwise ceased to function. Currently, five of the piezometers are functional.

Monitoring of the functioning piezometers was completed by Buckhorn on September 26th, 2023. The attached monitoring report prepared by Buckhorn includes the piezometer monitoring data and the data is summarized in the following table.

VWP ID	Initial Pore Pressure (psi)	06/20/23 Pore Pressure (psi)	09/26/23 Pore Pressure (psi)	Difference Since Installation (psi)	Difference Since Last Reading (psi)
VWP-05	6.8	0.8	1.2	-5.6	+0.4
VWP-06	11.3	10.7	10.6	-0.7	-0.1
VWP-08	8.2	8.4	8.6	+0.4	+0.2
VWP-09	2.8	3.0	3.0	+0.2	0.0
VWP-10	-1.9	-1.7	-1.6	+0.3	+0.1

Discussion of Vibrating Wire Piezometers

VWP-05

VWP-05 was installed on August 3, 2005 near the toe of CWDA No. 2 adjacent to the access road/bench. The pore pressures recorded at VWP-05 have shown some seasonal fluctuations; however, the range of pore pressure changes is fairly small. In addition, recent data has shown a general downward trend in pore pressures. In general, HBET does not believe that the pore pressures in VWP-05 are cause for concern regarding stability of the gob pile.

VWP-06

VWP-06 was installed on June 5, 2009 near the existing top of CWDA No. 2. The pore pressures recorded at VWP-06 have fluctuated since installation. However, the pore pressures have been generally decreasing over the last few years. In general, HBET does not believe that the measured pore pressures are an indication of any instability in CWDA No. 2.

VWP-08

VWP-08 was installed on June 5, 2009 at a slightly lower elevation than VWP-06. The pore pressures recorded at VWP-08 have fluctuated since installation. However, the measured values have stabilized over the past year. This is consistent with limited activity at CWDA No. 2, and the pore pressures are anticipated to remain steady or drop over time.

As indicated in the referenced *Stability Evaluation* report, the stability of CWDA No. 2 is sensitive to increases in pore pressures in VWP-08. An increase in the pore pressure of 7 psi in VWP-08 would result in a reduction of the Factor of Safety to below 1.5.

The current pore pressure reflects a piezometric surface elevation of approximately 6095 feet which is much less than the critical elevation of 6113 feet. As a result, HBET does not believe that the measured pore pressures in VWP-08 are any indication of instability in CWDA No. 2.

VWP-09

VWP-09 was installed on May 18, 2012 near the toe of CWDA No. 2. The pore pressures recorded at VWP-09 have been fairly steady since installation. This suggests that dewatering of the gob in this area is likely nearly complete. It is anticipated that the pore pressures at VWP-09 will remain fairly steady over time.

VWP-10

VWP-10 was installed on May 18, 2014 near the toe of CWDA No. 2. The pore pressures recorded at VWP-10 have been fairly steady since installation. This suggests that dewatering of the gob in this area is likely nearly complete. It is anticipated that the pore pressures at VWP-10 will remain fairly steady over time.

General

In general, based upon the results of the recent VWP and inclinometer monitoring data, HBET does not believe that there is any reduction in the stability of CWDA No. 2. Due to the limited activity at the mine, HBET recommends that the monitoring frequency be reduced to semi-annually.

We are pleased to be of service to your project. Please contact us if you have any questions or comments regarding the contents of this report.

Respectfully Submitted:

Huddlestone-Berry Engineering and Testing, LLC



Michael A. Berry, P.E.
Vice President of Engineering

ATTACHMENTS



September 29, 2023

Mr. Mike Berry, PE
Huddleston-Berry Engineering and Testing, LLC
2789 Riverside Parkway
Grand Junction, CO 81501

SUBJECT: Summary Report, 3rd Quarter 2023, Inclinator and Active Vibrating Wire Piezometer Data July – September 2023, Bowie Mine #2 Coal Waste Disposal Area (CWDA) #2

Greetings Mr. Berry:

Buckhorn Engineering, Inc. (BEI) conducted quarterly monitoring of inclinometers and vibrating wire piezometers (VWP) at Coal Waste Disposal Area #2 (CWDA #2), Bowie Resources, LLC Bowie Mine #2. This report covers the period from July through September 2023. Field VWP data and inclinometer data were recorded on September 26, 2023. Per Colorado Division of Reclamation, Mining & Safety (CDRMS) and your directions, vibrating wire piezometer and inclinometer readings for all active instruments are currently recorded and reported quarterly.

Vibrating Wire Piezometers

The physical locations of the piezometers are shown on the attached Instrumentation Site Plan (Map 1). As seen on this map, five of the original piezometers were damaged, and some were replaced. Currently, there are five active VWP's, and three of them are adjacent to inclinometers. The graph of historical VWP data from May 16, 2005 through May 21, 2014 is presented in Figure 1. A graph of measured pore pressures of active piezometers is presented on the attached Figure 2 and is presented numerically in Table 1 below.

Table 1. Summary of VWP Pore Pressure Readings

VWP ID #	Measured Pore Pressures (psi)				Pore Pressure Difference (psi)		
	Installation	Last Year (Qtr 3) 9/29/2022	Last Quarter (Qtr 2) 6/20/2023	Current (Qtr 3) 9/26/2023	Since Installation	Since Last Year (Qtr 3)	Since Last Quarter (Qtr 2)
VWP-05	6.8	0.8	0.8	1.2	-5.6	0.4	0.4
VWP-06	11.3	10.9	10.7	10.6	-0.7	-0.3	-0.1
VWP-08	8.2	8.1	8.4	8.6	0.4	0.5	0.2
VWP-09	2.8	3.0	3.0	3.0	0.2	0.0	0.0
VWP-10	-1.9	-1.6	-1.7	-1.6	0.3	0.0	0.1

As seen on Table 1 and Figure 2, the VWP readings and trends are consistent with recent and historic readings. When compared to a year ago, pore pressure readings did not change in two of the VWP's (VWP-09 and VWP-10) and the other three changed by small amounts (-0.3 to 0.5 psi). When compared with last quarter (Q2 2023), pore pressures also changed by relatively small amounts (-0.1 to 0.4 psi) for all five VWP's. Although four of the five VWP's remain steady or have general declining trends in pore pressure over the life of the VWP's, one of the piezometers (VWP-05) has exhibited pronounced seasonal cyclical behavior for its lifespan, except from mid-2021 to mid-2022 where there was a steady decline in pore pressures. This piezometer generally (but not always) shows low pore pressures for Q1 and Q2 and higher pressures for Q3 and Q4, with a net loss of 5.6 psi over the lifetime of that VWP. The other four VWP's have experienced net changes of +/-0.7 psi or less since installation, meaning current readings are very similar to initial readings. For VWP-09 and VWP-10, pressures have been consistent throughout the lifetime of the piezometers; however, for VWP-06 and VWP-08, they experienced wild fluctuations in pore water pressure in the first half of their lifetimes but have settled to pressures similar to the installation pressures in the past several years.

Inclinometers

Three inclinometers (designated BG05-4, BG05-5, and BG05-7) were installed at CWDA #2 in August 2005. The inclinometers were installed through the coal refuse and approximately 20 feet into the native foundation soils. The locations of the inclinometers are shown on the attached Instrumentation Site Plan (Map 1). Baseline readings were taken on August 10, 2005, and subsequent readings have generally been taken quarterly since that time. Displacement curves for each of the three inclinometers for the current and five previous readings are presented as attachments to this letter in Figure 3. Axis "A" reflects deformation with depth in the direction of anticipated movement (downslope), while Axis "B" is orthogonal to Axis A.

As described in previous reports, historic displacements indicated on the plots for the approximate upper 12-14 feet of the inclinometers since installation in 2005 are due to placement of cover soil on the face of the waste pile during revegetation operations in late 2006 and early 2007. This man-caused displacement is documented in a report by Buckhorn Geotech dated December 22, 2008, to Bowie Resources called *Revised Stability Evaluations for Coal Mine Waste Disposal Area No. 2, Bowie No. 2 Mine*.

Based on the current inclinometer readings, there has not been evidence of significant downslope movement (Axis A) in any of the inclinometers since 2007 and they are generally consistent with previous readings. Some "noise" which is understood to be relatively common in orthogonal direction (Axis B) readings, was observed over the past few years for all three inclinometers. This can be due to various mechanical or installation causes that are unrelated to slope movement. For example, grout voids, poor grout coverage, or soil settlement around the instrument can all contribute to vibrations and pipe movement that impacts inclinometer readings. Software bias adjustments were applied which filtered this noise. All readings were consistent with previous ones and the "displacement" error was within equipment tolerances and not deemed to be due to slope movement.

Table 2 below shows water levels in all three inclinometers for the past 11 quarters. There was no water in the BGI05-5 pipe and this inclinometer is typically dry. However, water was standing in the BGI05-4 inclinometer pipe at a depth of 4.0 feet and in BGI05-07 at 8.0 feet. Water has been observed in these two inclinometers for most of their history. In order for water to be in inclinometer pipes, the seal may be broken at the seams where the pipes snap together, the grout sleeve could have voids or has deteriorated so that it no longer forms a solid sleeve around the inclinometers, or there is a crack in the pipe, either due to slope movement or other pipe damage. Although it is not known for sure, we suspect the pipes cracked in 2006-2007 when the slope revegetation occurred, in the upper 12-14 feet of the inclinometers.

Table 2. Summary of Groundwater Levels in Inclinometers

inclinometer	2021-2023 Groundwater Levels per Quarter (feet)										
	2021				2022				2023		
	Q1	Q2	Q3	Q4	Q1	Q2	Q3	Q4	Q1	Q2	Q3
BGI 05-04	6.0	5.0	3.0	4.0	6.0	7.0	6.0	7.0	surface	surface	4.0
BGI 05-05	dry	dry	dry	dry	dry	dry	dry	dry	dry	dry	dry
BGI 05-07	8.5	10.5	10.0	12.0	10.0	8.0	8.0	10.0	8.5	11.0	8.0

If you have any questions regarding this letter or the instrumentation monitoring at CWDA #2, please contact me at (970) 497-8821 or lbrandt@buckhornengineering.com.

Respectfully Submitted,
Buckhorn Engineering, Inc.



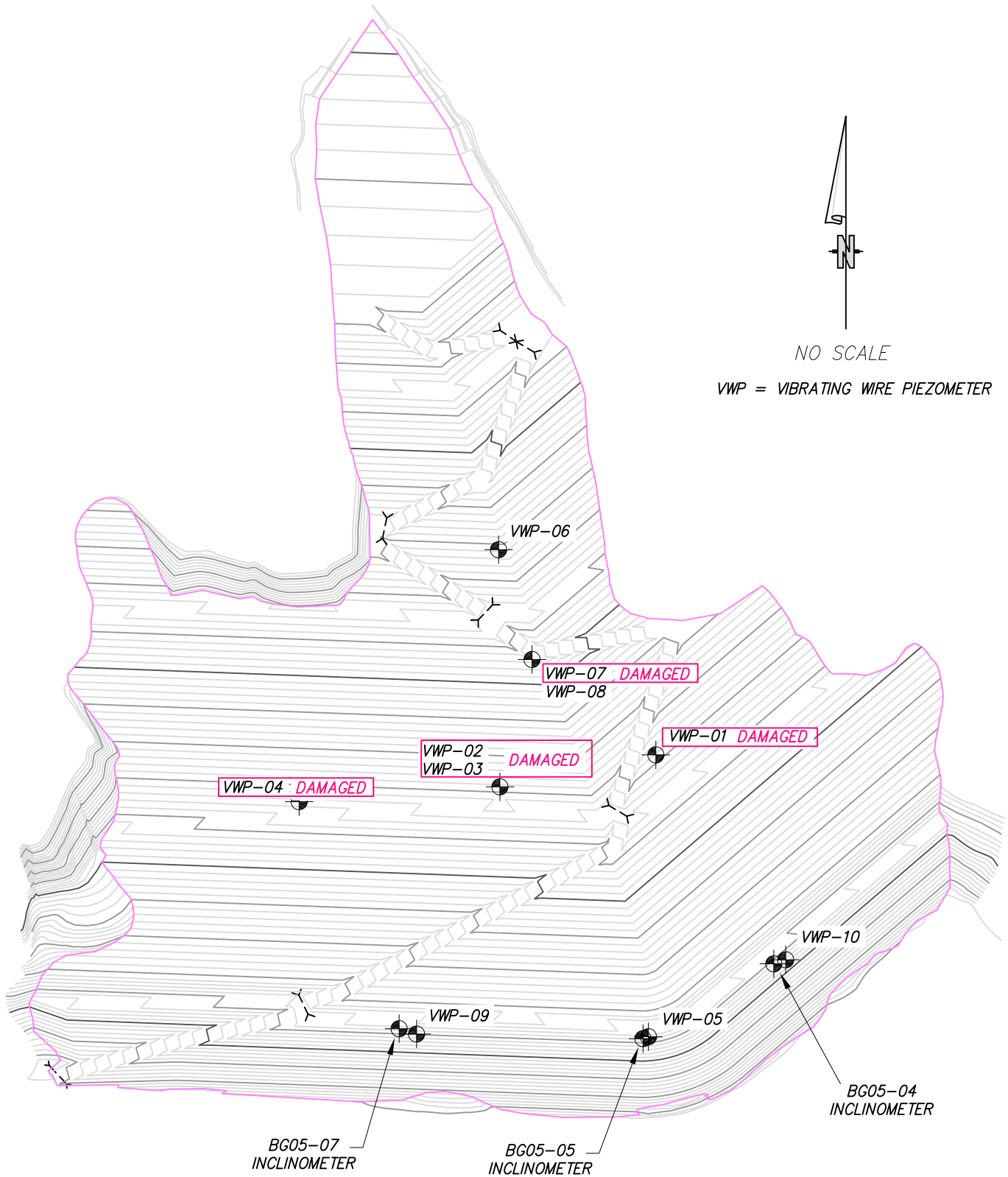
Laurie J. Brandt, CPG
Certified Professional Geologist



Daniel C. Quigley, P.E.
Senior Civil Engineer/Professional Geologist

Attachments: Map 1 – Instrumentation Location Plan
Figure 1 – Active and Damaged Piezometer Data Graph (2005-2014)
Figure 2 – Active Vibrating Wire Piezometer Data Graph (installation to present)
Figure 3 – Inclinometer Displacement Curves

INSTRUMENTATION SITE PLAN



Map

1

OF 1

DATE

2021

JOB NO.

2021-008-GEO

Huddleston-Berry

BOWIE #2 GOB PILE

DELTA COUNTY, COLORADO

BUCKHORN
ENGINEERING

Figure 1 - Bowie Mine #2 - CWDA #2
Active and Damaged Vibrating Wire Piezometer Data

Inception (5/16/05) through 5/21/14

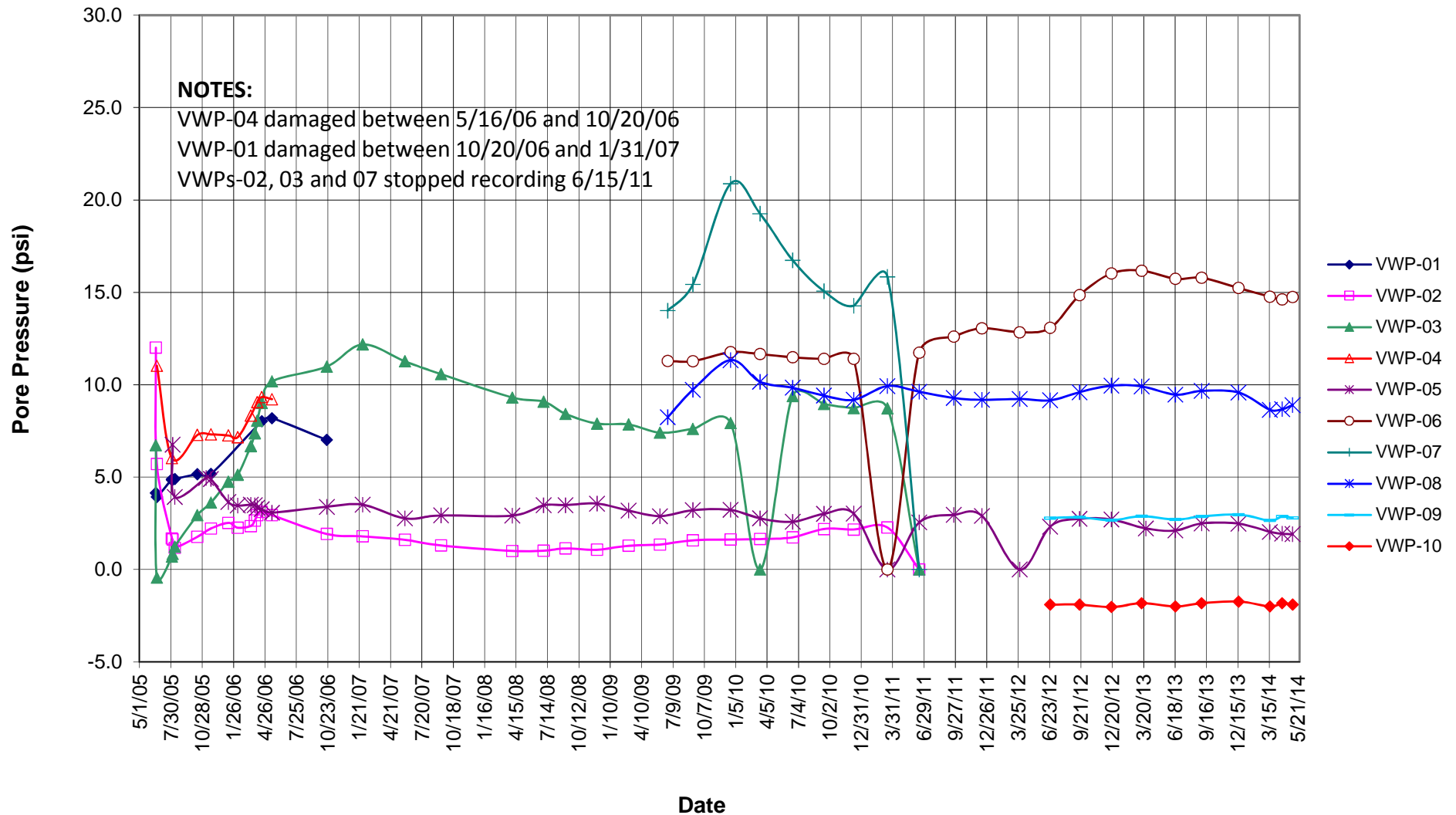
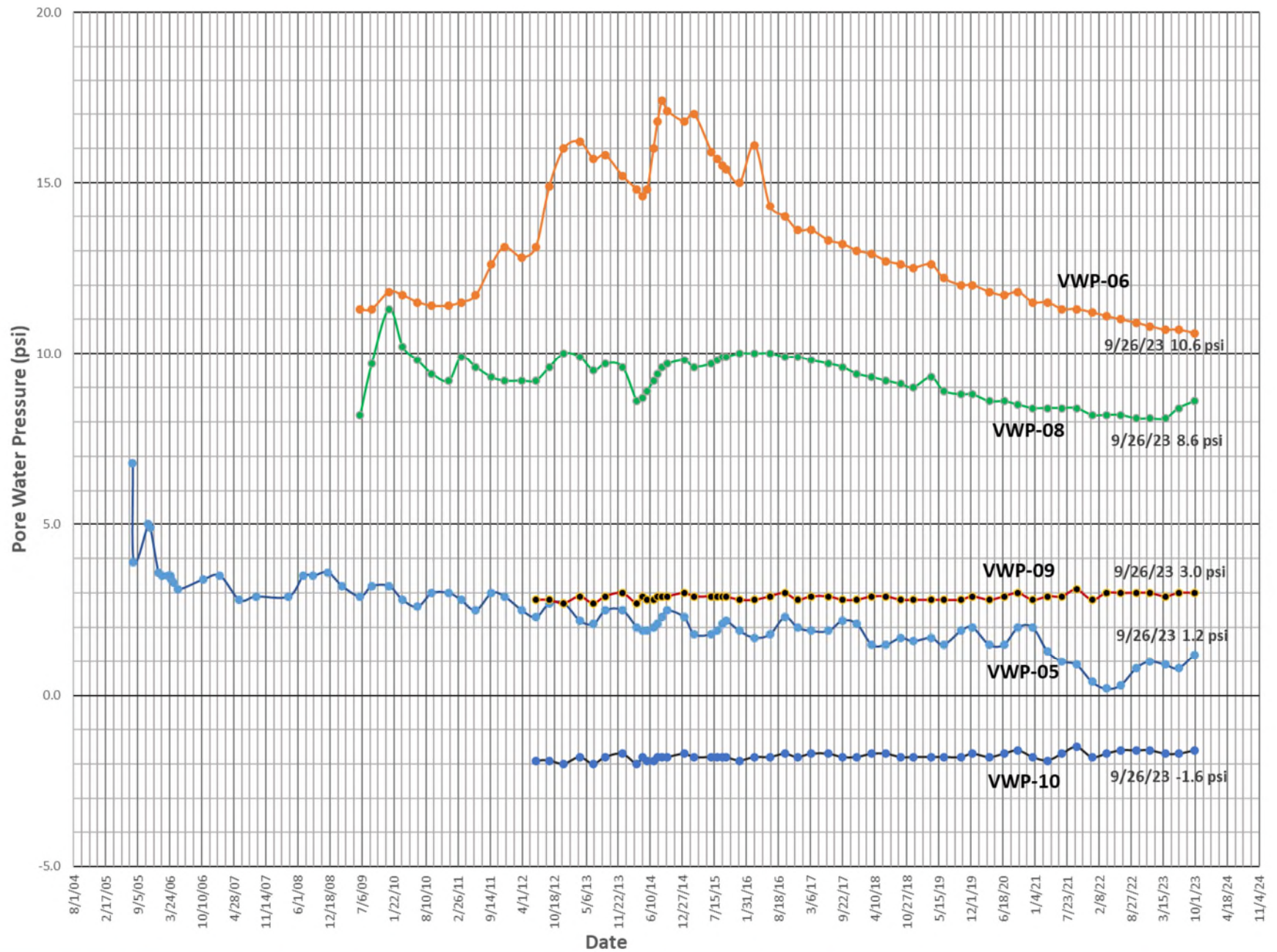
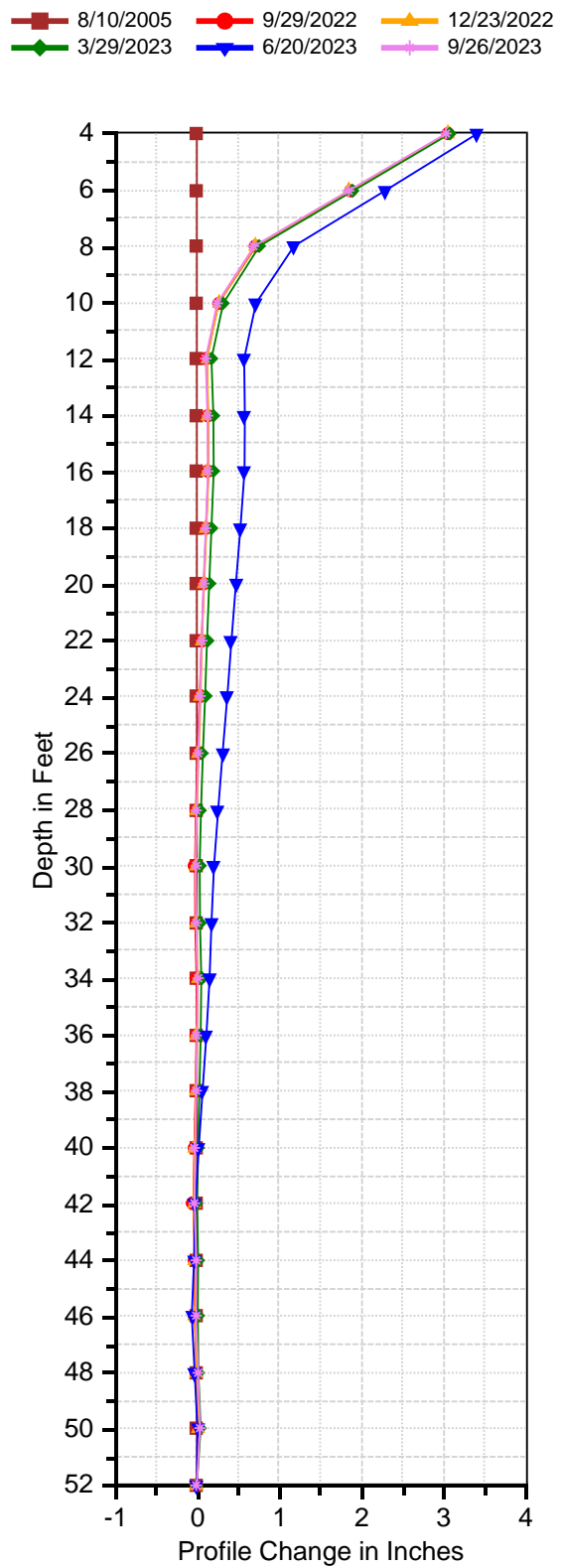


Figure 2 - Bowie Mine #2 - CWDA #2
Active Vibrating Wire Piezometer Data

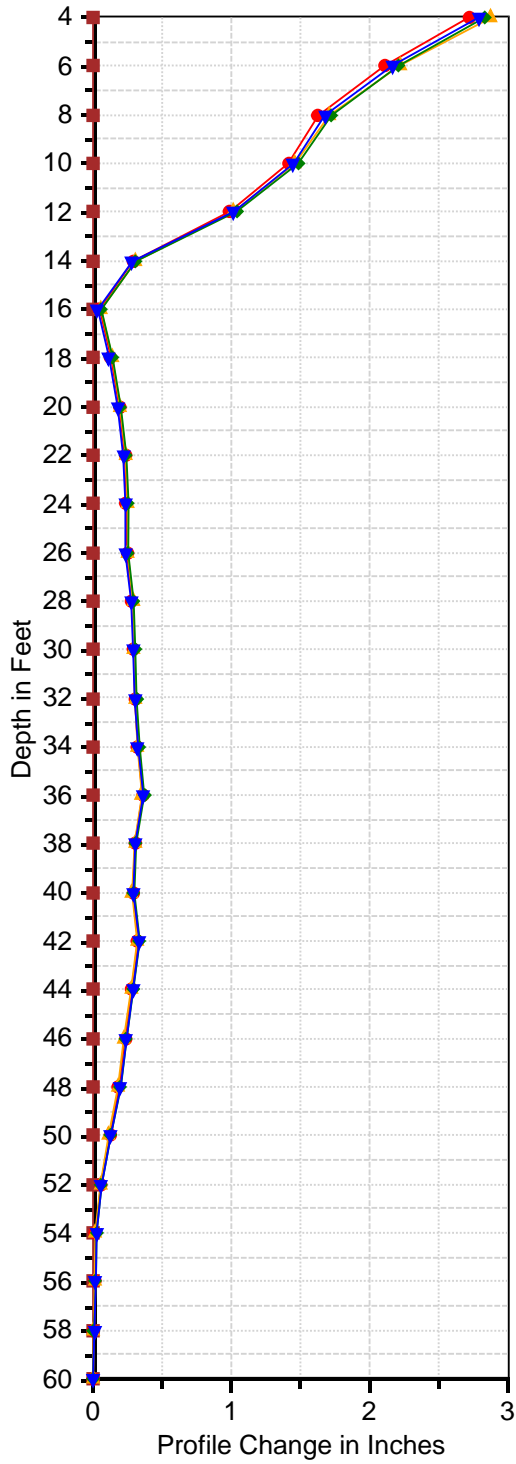


BOWIE BG05_4 A



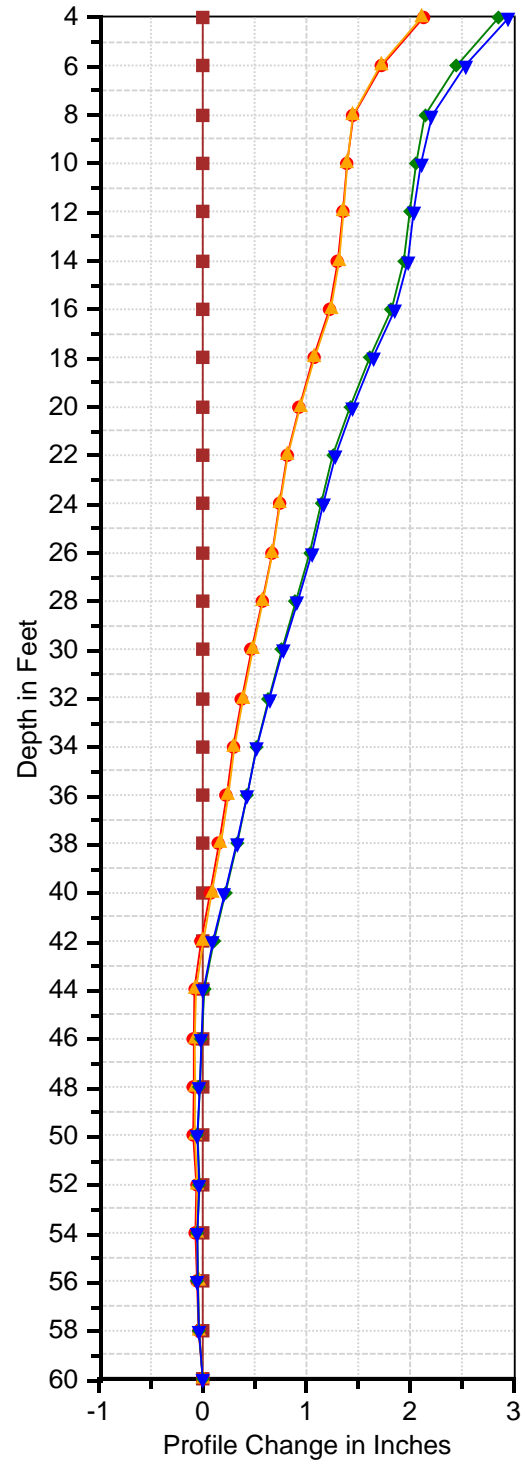
BOWIE BG05_5 A

8/10/2005 12/23/2022 3/29/2023
6/20/2023 9/26/2023



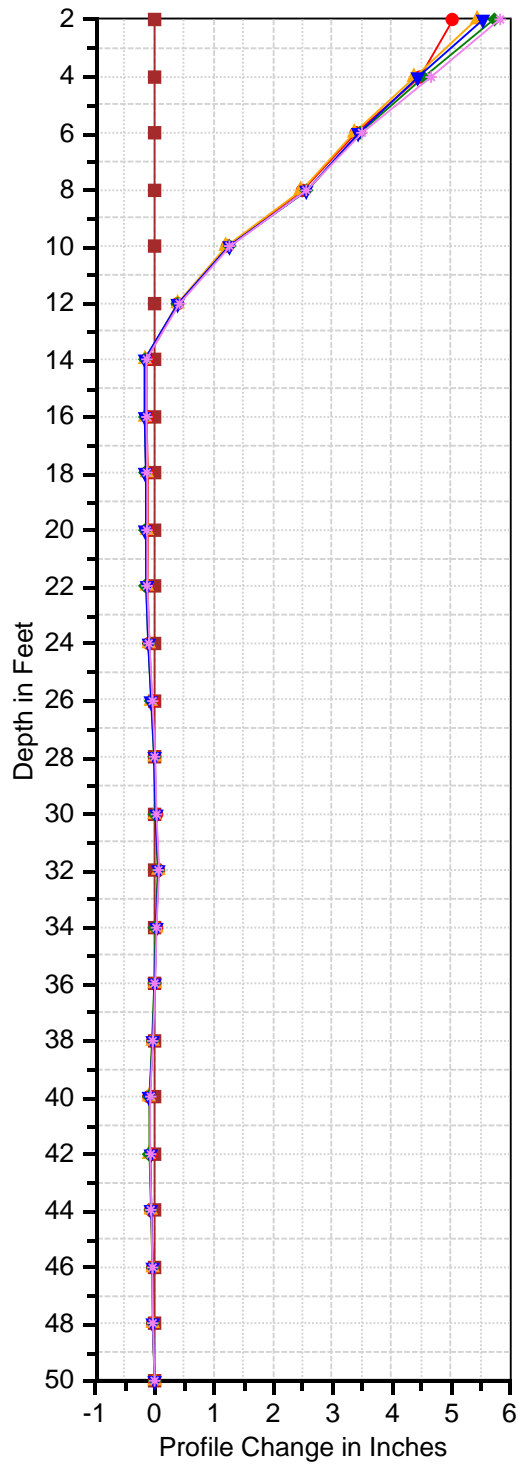
BOWIE BG05_5 B

8/10/2005 12/23/2022 3/29/2023
6/20/2023 9/26/2023



BOWIE BG05_7 A

8/10/2005 9/29/2022 12/23/2022
3/29/2023 6/20/2023 9/26/2023



BOWIE BG05_7 B

8/10/2005 9/29/2022 12/23/2022
3/29/2023 6/20/2023 9/26/2023

