



## Keenesburg Mine Site Inspection Report

3rd Quarter

9/22/2023

Inspected By: Matt Clark

### **Boundary, Fence & Facilities**

**Missing Boundary Markers:** No

**Fence Repairs:** No

**Precipitation Gage Issues:** No

**Other Facilities Issues:** No

### **Weeds & Pests**

**Noxious Weeds:** Yes

Species: Cheatgrass/Downy brome - Bromus tectorum - List C

See report photos for locations and Management strategies.

**Nuisance Weeds (impacting desirable reclamation):** Yes

Species: Russian thistle

See fall 2023 mowing map

**Pests:** No

Species:

### **Vegetation Establishment & Health**

**Low Density Vegetation Areas:** Yes

See photos and recommendations for fall overseeding

**Areas of Poor Health:** No

Ailment(s):

### **Erosion**

**Excessive Erosion:** No

Description:

**New BMPs Required:** No

**BMPs Requiring Maintenance:**

## **Site Management Summary**

Site Management Activities Requiring Follow-up: Yes

Specific Task(s): Noxious Weed Management, Nuisance Weed Management, Supplemental Seeding

### **Photos**



Dense and widely spread Cheatgrass. No mow or reseed fall 2023 to avoid disturbing ground and spreading seed. Manage by mowing prior to seed set 2024 and reseed fall 2024, if appropriate (Photo 1).



Widely spread desirable native grasses with minimal nuisance weed competition. Fall mowing and overseeding not necessary in 2023 (Photo 2).



Dense cheatgrass in Area. Minimal desirable vegetation noticeable. No mow or reseed fall 2023 to avoid disturbing ground and spreading seed. Manage by mowing prior to seed set 2024 and reseed fall 2024, if appropriate (Photo 3).



Mow area in preparation for fall seeding. Noted Russian thistle stunted, check for soil compaction or soil fertility issues prior to overseeding (Photo 4).



No sheet flows observed in areas where erosion was recorded prior to revegetation. Likely a result from deep ripping in a north to south direction during spring 2022 revegetation work (Photo 5).



Weather station appears functional (Photo 6)



Warm season grasses starting to establish and become more predominant in revegetation areas (Photo 7).



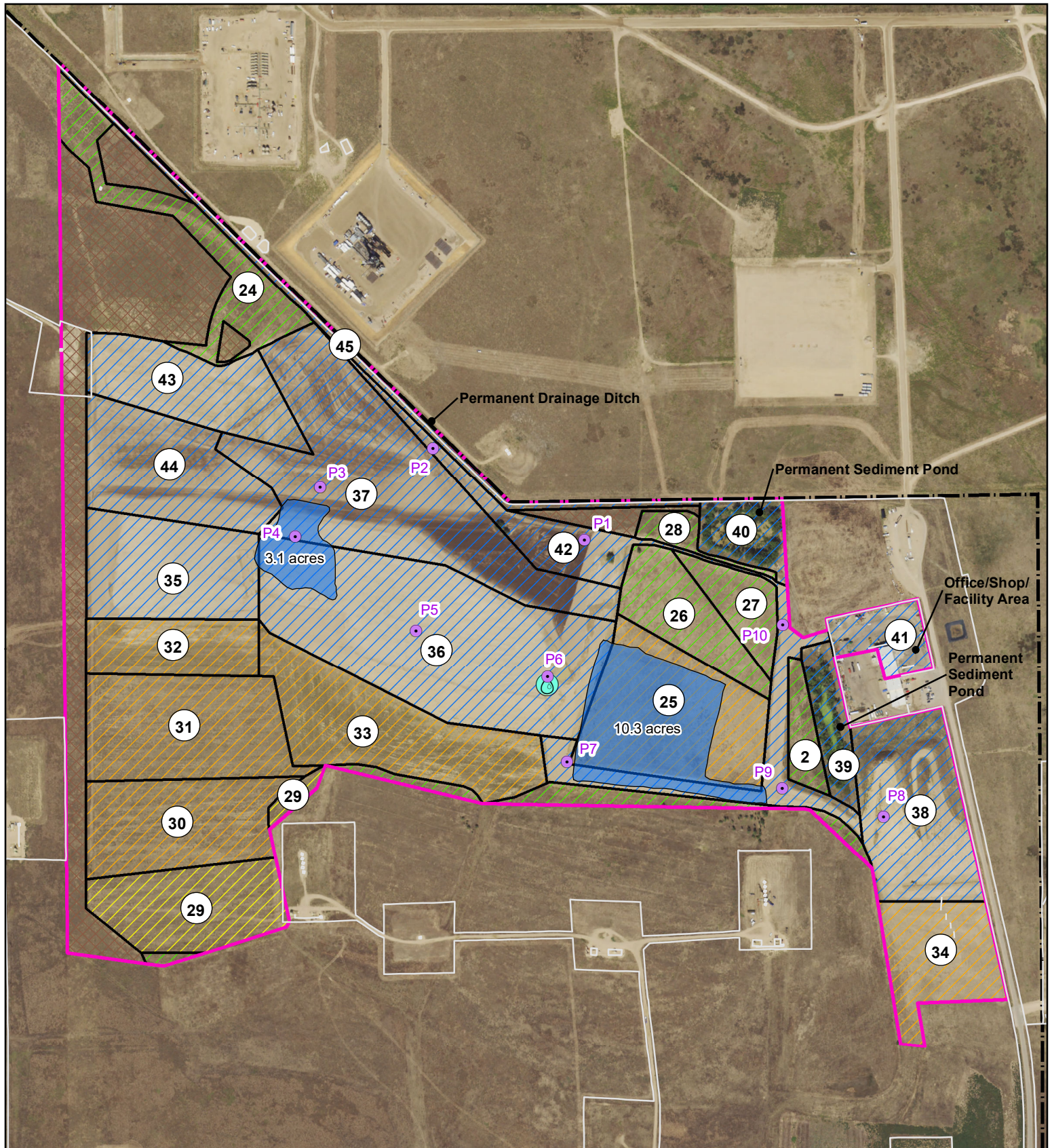
Area marketed for fall reseeding may not be necessary with warm season grasses starting to establish. Continue to monitor spring 2024. No mow fall 2023 to allow warm season grasses to set seed and preserve old vegetation cover to help soil surface from drying out over wintering months (Photo 8).



Dense sandbar grass in area. Though native, avoid dispersal during mowing and other fall revegetation activities (Photo 9).



Dense cheatgrass on old haul road and revegetation area. No mow or reseed fall 2023 to avoid disturbing ground and spreading seed. Manage by mowing prior to seed set 2024 and reseed fall 2024, if appropriate. Buffalograss also dispersed amongst cheatgrass (Photo 10).



- Photo Point (see report)
- Fall Mowing Area
- Phase III Bond Release
- Phase II Bond Release
- Phase I Bond Release
- Pending Phase I
- Undisturbed Area
- Permit Boundary
- Fence
- Precipitation Gage

0 500 1,000 Feet



# COORS ENERGY KEENESBURG MINE

3rd Quarter 2023 Site Inspection



Date: 10/3/2023  
 Drawn by: RB  
 Checked by: MC