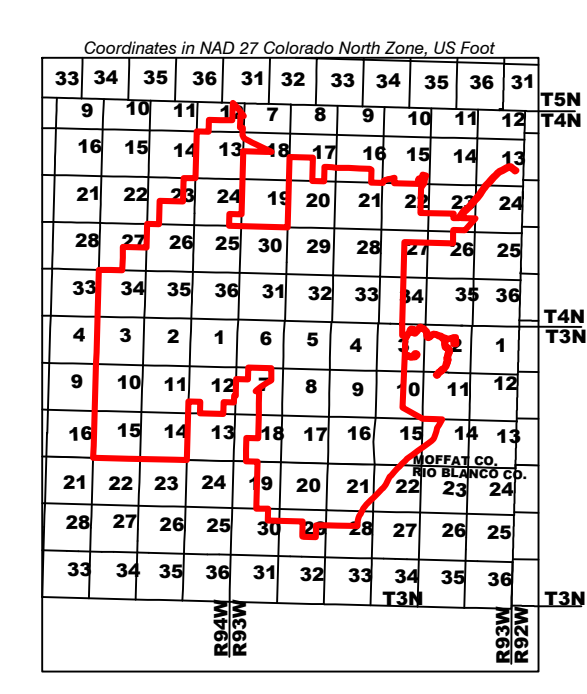
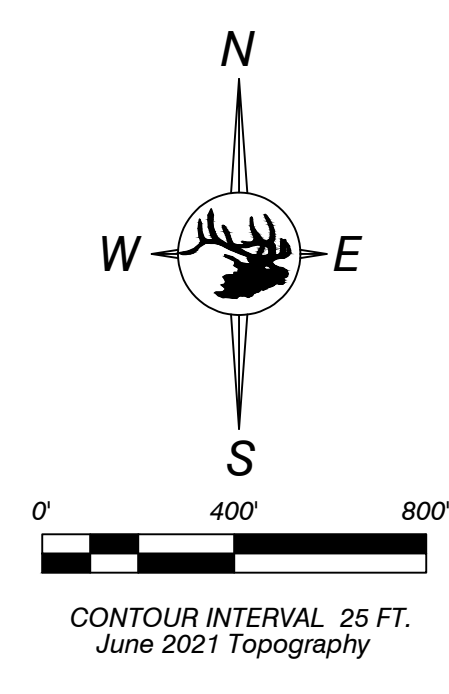


LEGEND

- Permit Boundary
- Section Line
- Roads
- Disturbance Boundary
- Facilities or Buildings
- Previously Mined Areas (Upper Seams Only to Date)
- Current Mining Areas
- Highwall Mining Areas (Completed)
- Current Highwall Mining Areas
- Sediment Pond
- Temporary Channel
- Excess Spoil Pile
- Colom Haul Road Pavement
- Perimeter Area Sediment Control Techniques (See Exhibit 7-23H)
- Little Colom Permanent Valley Fill

Note: Areas within the Colom Pit Disturbance Boundary Not Currently Shown to be Mined, May Be Mined In The Future



ENGINEERS CERTIFICATION
I, LEE E. SAMPSON, hereby certify that this map has been reviewed by me and is true and correct to the best of my knowledge and information, relying on information supplied by experts employed by Colowyo Coal Company or qualified consultants working for Colowyo Coal Company, and that I am a Professional Engineer licensed in Colorado as required by the provisions of C.R.S. 12-25-110. IN WITNESS WHEREOF, I have hereunder set my hand and affixed my seal.

LEE E. SAMPSON
10/23/23
PROFESSIONAL ENGINEER

Mine Plan
Colom Pit



SCALE: 1" = 400'
DATE: 5/19/08
DRAWN BY: TGP-RWF/ESI
APPROVED BY: KB
DRWG NO.

Map 23B

No.	REVISION	DATE	BY	CHK
TR-147	Revised Highwall Mining Blocks/Timing, Updated Topo	4/26/21	TONY	LES
TR-147	Revised Highwall Mining Blocks	5/18/21	TONY	LES
RH-08	Adjust Mining Block Timing For Permit Term	4/14/22	TONY	LES
RH-08	Updated Mine Plan from TR-154 Approval	8/9/22	TONY	LES
TR-160	Updated Mining and Mined Out Blocks, Updated Highwall Mining	10/23/23	TONY	LES