



STATE OF
COLORADO

Ridley - DNR, Hunter <hunter.ridley@state.co.us>

Inspection Report, Foidel Creek Mine, C-1982-056

1 message

Ridley - DNR, Hunter <hunter.ridley@state.co.us>

Mon, Oct 23, 2023 at
10:53 AM

To: "Kawcak, Miranda" <mkawcak@peabodyenergy.com>

Cc: "Mackinnon, Daniel K" <dmackinnon@osmre.gov>, hhampstead@osmre.gov

Miranda,

Please find attached the inspection report for the October 12, 2023 OSM oversight inspection of the Foidel Creek Mine. Please reach out if you have any questions or concerns.

Kind regards,
Hunter Ridley (she/her/hers)
Environmental Protection Specialist



COLORADO
Division of Reclamation,
Mining and Safety
Department of Natural Resources

P 720.868.7757 | F 303.832.8106

Physical: 1313 Sherman Street, Room 215, Denver, CO 80203

Mailing: DRMS Room 215, 1001 E 62nd Ave, Denver, CO 80216

hunter.ridley@state.co.us | <https://drms.colorado.gov>




Oct_CP_Foidel.pdf
9608K



PERMIT INFORMATION

Permit Number: C-1982-056 Mine Name: Foidel Creek Mine Operator: Twentymile Coal, LLC Operator Address: Ms Miranda Kawcak 29515 Routt County Road No. 27 Oak Creek, CO 80467	County: Routt Operation Type: Underground Permit Status: Active Ownership: Private
	Operator Representative Present: Miranda Kawcak
Operator Representative Signature: (Field Issuance Only) 	

INSPECTION INFORMATION

Inspection Start Date: October 12, 2023 Inspection Start Time: 10:30 Inspection End Time: 12:30		Inspection Type: Coal Partial Inspection Inspection Reason: OSM Oversight Inspection Weather: Raining/Snowing	
Joint Inspection Agency: OSMRE		Joint Inspection Contacts: Dan MacKinnon, Haley Hampstead	
Post Inspection Agency: None		Post Inspection Contacts: 	
Inspector(s): Hunter Ridley	Inspector's Signature: 		Signature Date: October 23, 2023

Inspection Topic Summary

NOTE: Y=Inspected N=Not Inspected R=Comments Noted V=Violation Issued NA=Not Applicable

N - Air Resource Protection

N - Availability of Records

N - Backfill & Grading

R - Excess Spoil and Dev. Waste

R - Explosives

Y - Fish & Wildlife

R - Hydrologic Balance

R - Gen. Compliance With Mine Plan

N - Other

N - Processing Waste

Y - Roads

Y - Reclamation Success

Y - Revegetation

N - Subsidence

N - Slides and Other Damage

N - Support Facilities On-site

R - Signs and Markers

N - Support Facilities Not On-site

N - Special Categories Of Mining

Y - Topsoil

COMMENTS

This was a partial inspection of the Foidel Creek Mine; DRMS Permit No. C-1982-056, operated by Twentymile Coal, LLC. (TC). This inspection was conducted by Hunter Ridley with the Colorado Division of Reclamation, Mining, and Safety (Division) and OSMRE representatives Dan MacKinnon and Haley Hampstead. Miranda Kawcak of TC accompanied an initial the inspection. **Please address the Bold items below.**

In an effort to ensure that all reclamation tasks are appropriately bonded for, the Division is currently in the process of collecting field data in an effort to ground truth and update on-site conditions at the Foidel Creek Mine. Data was collected during this inspection and will continue to be collected over a number of inspections during this process. Final data collection and recalculation of the financial warranty will be completed by July of 2024.

SIGNS AND MARKERS—Rule 4.02

Appropriate mine identification signs were observed throughout the site (Photo 1). All information required for compliance was present on signs.

HYDROLOGIC BALANCE - Rule 4.05

Drainage Control 4.05.1, 4.05.2, 4.05.3; Siltation Structures 4.05.5, 4.05.6; Discharge Structures 4.05.7, 4.05.10; Diversions 4.05.4; Effluent Limits 4.05.2; Ground Water Monitoring 4.05.13; Surface Water Monitoring 4.05.13; Drainage – Acid and Toxic Materials 4.05.8; Impoundments 4.05.6, 4.05.9; Stream Buffer Zones 4.05.18:

Main Facilities Area (Photo 4)

Ponds in the Main Facilities areas were checked for discharge and culverts were checked for function (Photos 2, 3, 5-9, 13, 18 - 20). Several culverts were inspected as part of the bond inspection data collection. All culverts except one at Pond E (Photo 9) were found to be free of blockages and functioning properly. All ponds across the main facilities area had been recently cleaned out. Pond T and one culvert,

Number of Partial Inspection this Fiscal Year: 3

Number of Complete Inspections this Fiscal Year: 1

located on the far western side of the main facilities area, were also inspected (Photos 15 and 17). Pond T has not discharged in many years and remains dry year round aside from small amounts of storm water and snowmelt capture.

The stoker coal loadout facility has been sealed with an inner waterproof liner. This was done in an effort to control any potential water leakage from this wash plant facility from travelling offsite and depositing sediment into nearby Foidel Creek. Photo documentation of this was provided to the Division on September 29, 2023. A pipe which run from the back of the facility towards a pump house was also installed to collect any water that pools in the stoker loadout building (Photo 10). As per the Division's request, several BMPs were also installed around the stoker loadout building to control any excess erosion. These improvements include a silt fence, which is in need of repair (Photo 12), and an additional sediment fence located on the western side of the stoker building to protect Foidel Creek from eroding sediment and from coal spills from the loadout (Photo 11). Hay bales have also been maintained at the back of the stoker building to control erosion (Photo 10).

Fish Creek Borehole

The Fish Creek Borehole area, located northwest of the main facilities area, is a water treatment borehole with three retention ponds. The ponds were inspected for stability and found to be free of erosional features (Photo 22). Water from this area is discharged to Foidel Creek infrequently as water quality is low due to high amounts of iron. The Operator stated that an updated treatment system would need to be installed in this area before water is discharged regularly.

USE OF EXPLOSIVES – Rule 4.08:

Three explosives storage bunkers are located on the far southwestern side of the main facilities area (Photo 14). Explosives are kept on site for general blasting, and would be mostly in contexts of maintaining safety underground. The storage bunkers are inventoried monthly. A storage lot for excess equipment and vehicles is also located in this same area (Photo 16).

EXCESS SPOIL AND DEV. WASTE – Rule 4.09 Placement; Drainage Control; Surface Stabilization:

The refuse pile was inspected from below (Photo 20) and from atop the pile (Photo 21). Trucks were actively hauling material at the time of inspection. The pile appeared to be stable and free of any standing water. Construction of lift three is currently underway and will continue throughout the winter season as weather allows. Eventually, this refuse face will be built up to meet the ridge of the adjacent, older refuse pile (Photo 21).

Compaction reports are conducted quarterly. As per the last inspection request (dated September 12, 2023), the Division has received a majority of the missing compaction reports need to complete the public record. The following reports still need to be submitted: 3rd Quarter 2021 and 2nd Quarter 2023. **Please submit all missing compaction reports through e-permitting to the Division and continue to submit these reports on a timely basis.**

Number of Partial Inspection this Fiscal Year: 3

Number of Complete Inspections this Fiscal Year: 1

GENERAL MINE PLAN COMPLIANCE:**Ongoing Maintenance Items:**

- Repair silt fence located behind the stoker loadout building
- Protect topsoil piles along the 6MN road during maintenance and snow plowing activities during the winter months
- Clean out the unnamed culvert at Pond E as shown in Photo 9

ENFORCEMENT ACTIONS/COMPLIANCE

No enforcement actions were initiated as a result of this inspection, nor are any pending.

PHOTOGRAPHS

Photo 1: Mine identification signage located at the site entrance.

Number of Partial Inspection this Fiscal Year: 3

Number of Complete Inspections this Fiscal Year: 1



Photo 2: View north of Pond G.



Photo 3: Unnamed 36" Culvert connected to the northwestern side of Pond F.

Number of Partial Inspection this Fiscal Year: 3

Number of Complete Inspections this Fiscal Year: 1



Figure 4: View north of the Main Facilities Area from xxx



Figure 5: 24" Culvert F-2-B, located near Pond F and connects to Ditch F-2, clean and functioning.

Number of Partial Inspection this Fiscal Year: 3

Number of Complete Inspections this Fiscal Year: 1



Photo 6: View east of Pond F.



Photo 7: View southeast of Pond E, recently cleaned.

Number of Partial Inspection this Fiscal Year: 3

Number of Complete Inspections this Fiscal Year: 1



Photo 8: Culvert E2D at Pond E, clean and functioning.



Photo 9: Unnamed culvert located on the northeastern side of Pond E is in need of cleanout, a rock and vegetation blocks flow.

Number of Partial Inspection this Fiscal Year: 3

Number of Complete Inspections this Fiscal Year: 1



Photo 10: Repaired plumbing behind the stoker loadout building.



Figure 11: Additional BMP located on the south eastern side of the stoker loadout building.

Number of Partial Inspection this Fiscal Year: 3

Number of Complete Inspections this Fiscal Year: 1



Photo 12: Silt fence below the stoker loadout building in need of repair.



Photo 13: Weir located at the discharge point for Pond D.

Number of Partial Inspection this Fiscal Year: 3

Number of Complete Inspections this Fiscal Year: 1



Photo 14: One of three storage bunkers for explosives at the Foidel site.

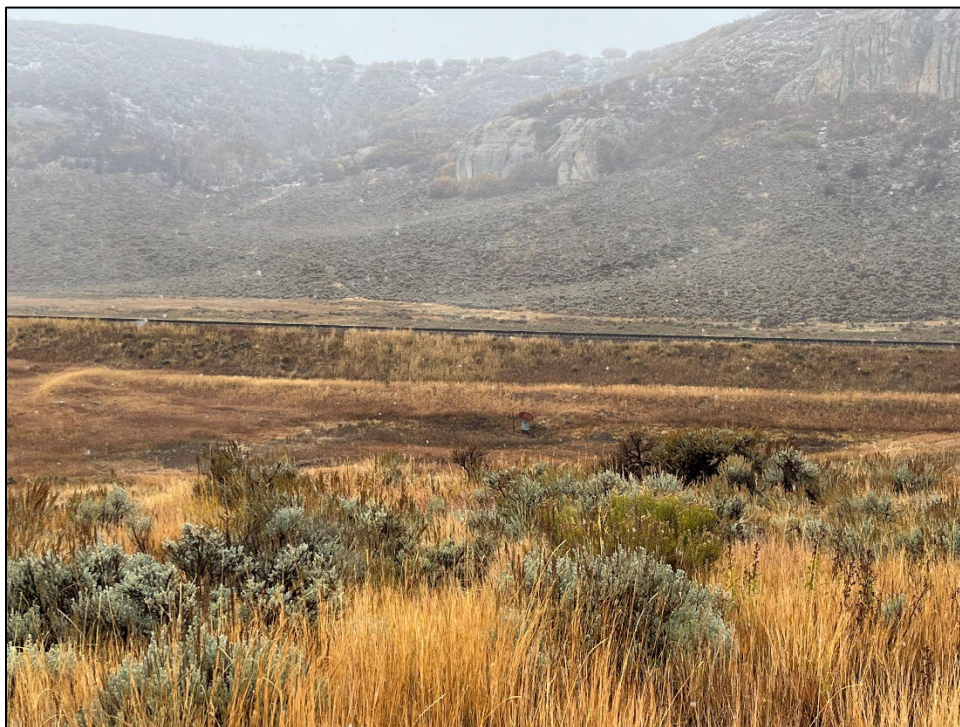


Photo 15: Pond T, has not discharged in many years.

Number of Partial Inspection this Fiscal Year: 3

Number of Complete Inspections this Fiscal Year: 1



Photo 16: View northeast of a vehicle storage area southwest of the main facilities area.



Photo 17: One of two 12" culverts located in the western facility area near the explosives storage bunkers.

Number of Partial Inspection this Fiscal Year: 3

Number of Complete Inspections this Fiscal Year: 1



Photo 18: View north of Pond D, the overland belt conveyor, and the stoker loadout facility.



Photo 19: View southeast of the Pit Pond.

Number of Partial Inspection this Fiscal Year: 3

Number of Complete Inspections this Fiscal Year: 1



Photo 20: View south of the Pit Pond and refuse pile.



Photo 21: View west from atop the refuse pile, looking towards the older refuse pile ridge which the currently active pile will eventually meet with.

Number of Partial Inspection this Fiscal Year: 3

Number of Complete Inspections this Fiscal Year: 1

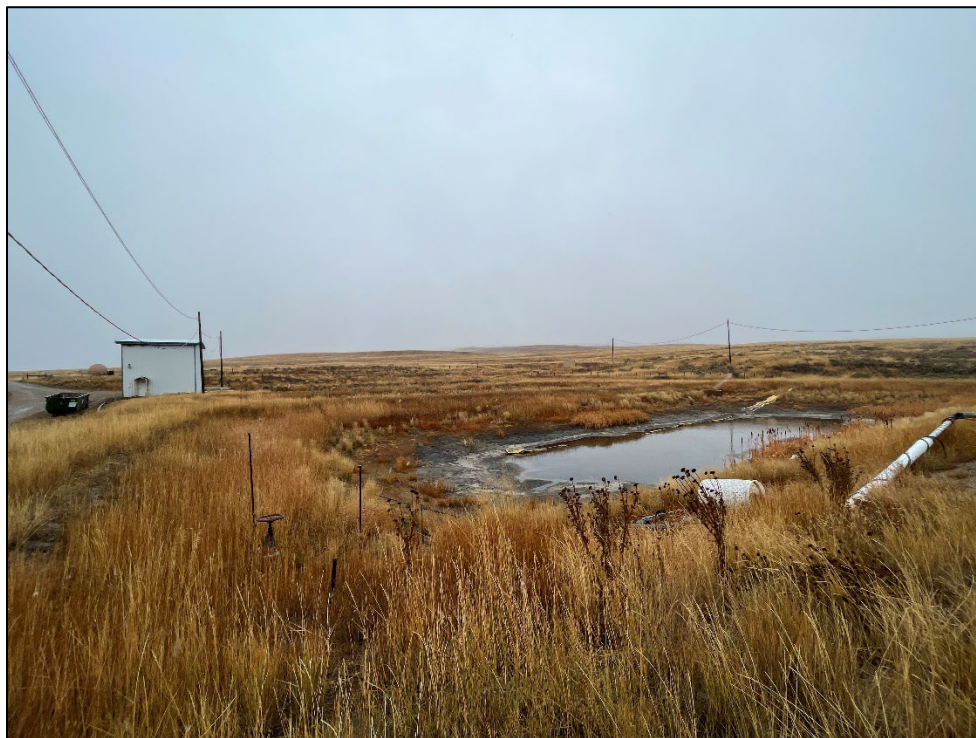


Photo 22: View east of the Fish Creek Borehole, three ponds are used to store and filter water before it is discharged to nearby Foidel Creek.

Number of Partial Inspection this Fiscal Year: 3

Number of Complete Inspections this Fiscal Year: 1