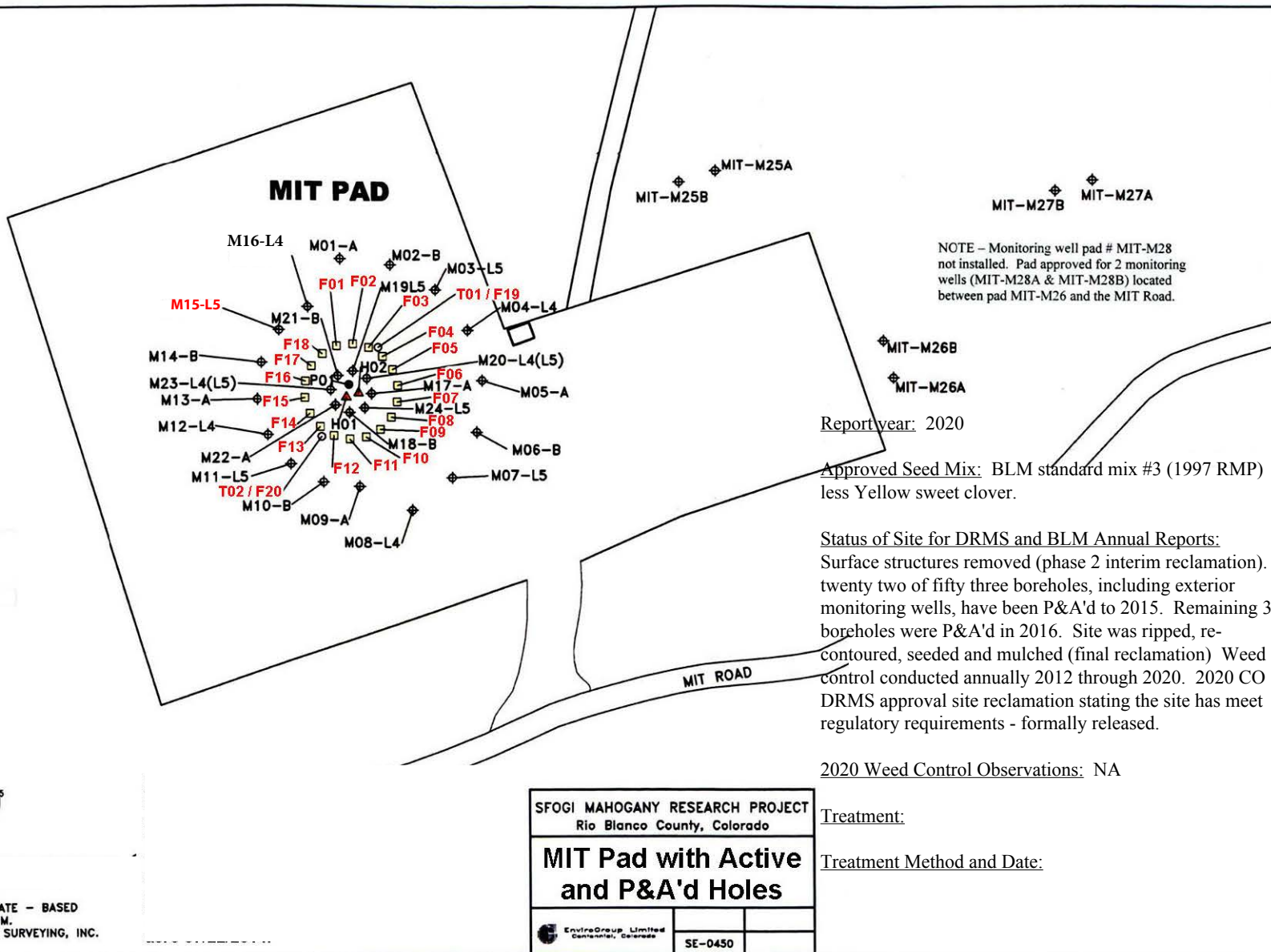


HOLE/WELL LEGEND

- ▲ HEATER
- ◆ MONITOR
- HYDROLOGY/CORE
- OBSERVER
- PRODUCER
- FREEZE



Report year: 2022 - Regulatory Released

Approved Seed Mix: BLM standard mix #3 (1997 RMP)
less Yellow sweet clover.

Status of Site for DRMS and BLM Annual Reports: Pits closed
(phase 2 interim reclamation). These six monitoring boreholes are
P&A'd 10/2016. Site has been ripped, re-contoured, seeded and
mulched 11/2016 (final reclamation). Weed control conducted
annually 2012 through 2022. 2022 CO DRMS approval site
reclamation stating the site has meet regulatory requirements - formally
released.

2022 Weed Control Observations: NA

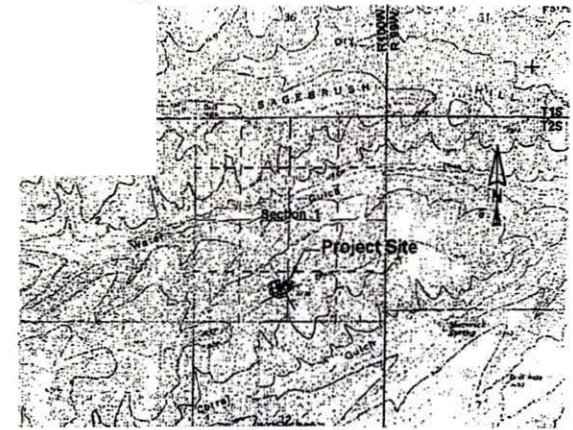
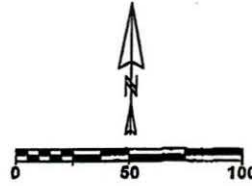
Treatment:

Treatment Method and Date:

SHELL FRONTIER OIL & GAS INC.

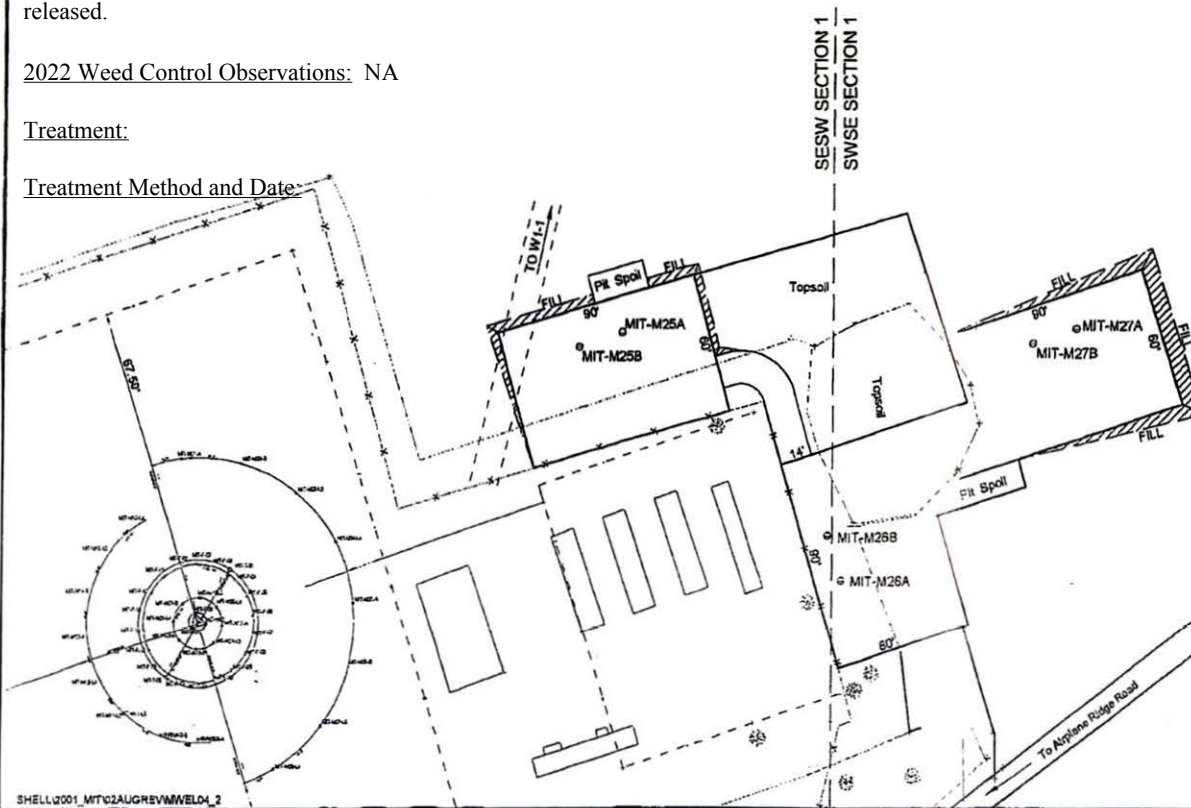
MIT Monitoring Pads MIT-M25 to MIT-M27

Rio Blanco County, Colorado



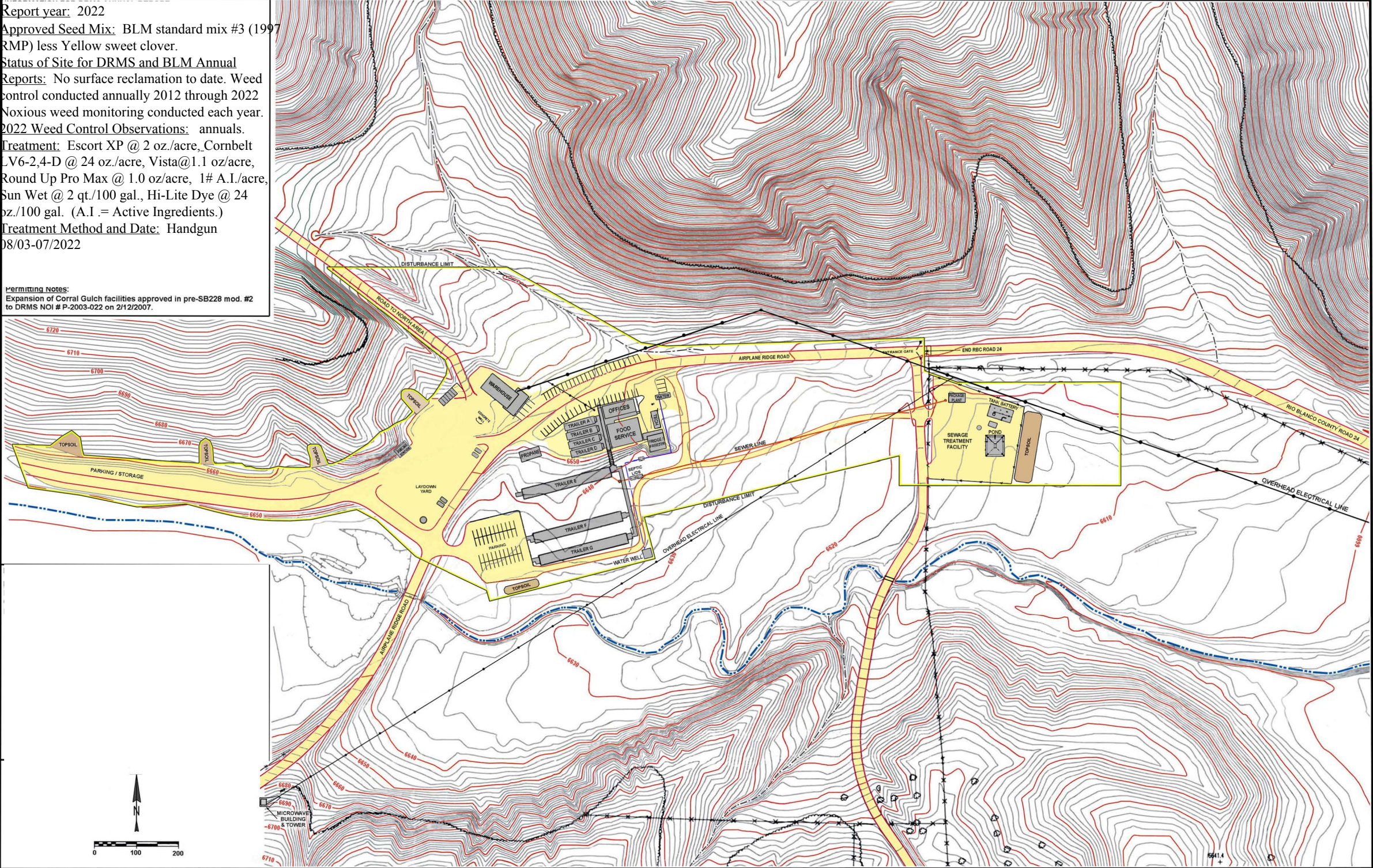
Vicinity Map

1" = 3000'



Report year: 2022
Approved Seed Mix: BLM standard mix #3 (1997 RMP) less Yellow sweet clover.
Status of Site for DRMS and BLM Annual Reports: No surface reclamation to date. Weed control conducted annually 2012 through 2022. Noxious weed monitoring conducted each year.
2022 Weed Control Observations: annuals.
Treatment: Escort XP @ 2 oz./acre, Cornbelt V6-2,4-D @ 24 oz./acre, Vista@1.1 oz/acre, Round Up Pro Max @ 1.0 oz/acre, 1# A.I./acre, Sun Wet @ 2 qt./100 gal., Hi-Lite Dye @ 24 oz./100 gal. (A.I. = Active Ingredients.)
Treatment Method and Date: Handgun 08/03-07/2022

Permitting Notes:
Expansion of Corral Gulch facilities approved in pre-SB228 mod. #2 to DRMS NOI # P-2003-022 on 2/12/2007.



SHELL FRONTIER
OIL & GAS INC.

CORRAL GULCH FACILITY
NE 1/4 Section 34, T1S, R99W, 6th P.M.
Rio Blanco County, Colorado

CONTOUR INTERVAL = 2 FEET
CHUCK WHITEMAN & ASSOCIATES
320 3RD. ST., P.O. BOX 957
MEEKER, COLORADO

ORIG. MAP DATE: 1/10/2007 by Chuck Whiteman & Associates
ANNUAL REPORT UPDATES: 5/29/14 by TDG
MRP-WIDE RECLAMATION PLAN - MAP 036
DRMS NOI # P-2003-022 ANNUAL REPORT - MAP 15

Report year: 2022

Approved Seed Mix: BLM standard mix #3 (1997 RMP) less Yellow sweet clover.

Status of Site for DRMS and BLM Annual Reports:

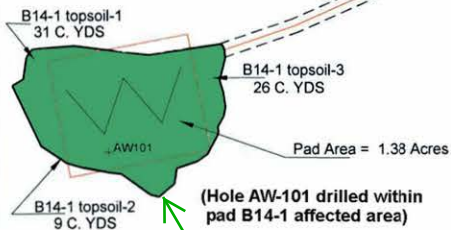
P&A completed on the five B14-1 installed boreholes 11/2002, 10/2010 and the single AW-101 installed borehole Fall 2014. Pad regraded, soil material replaced, and area seeded 03/2004 (phase 2 interim reclamation). Area redisturbed for 2010 P&A work and portions of access road seeded Fall 2004 (final reclamation phase). Weed control conducted annually 2012 through 2022. Noxious weed monitoring conducted each year. CO DRMS approval site reclamation stating the site has meet regulatory requirements - formally released

2022 Weed Control Observations: No weeds observed

Treatment:

Treatment Method and Date:

**PAD AW-101 & B14-1
SECTION 1, T2S
R100W, 6th P.M.**



CO DRMS approval site
reclamation stating the site
has meet regulatory
requirements - formally
released

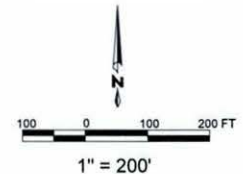
17' ACCESS ROAD
Area = 1.13 Acres

14' Old Road.
Area = 0.09 Acre
(area reclaimed at an earlier date)

Water Gulch Road

HOLE 3-1-L1

**Pad AW-101
and
Pad B14-1
(also 97-1-200)
Site Map**



Report year: 2022

Approved Seed Mix: BLM standard mix #6 (1997 RMP).

Status of Site for DRMS and BLM Annual Reports:

P&A completed on the single 10-6 installed borehole (11/2007) and the single installed AW-102 borehole (11/2010). Pad regraded, soil material replaced, and area seeded 03/2004 (phase 2 interim reclamation). Additional seeding in 2010 after borehole P&A (final reclamation phase). Weed control conducted annually 2012 through 2022. Noxious weed monitoring conducted each year.

2022 Weed Control Observations: annuals.

Treatment:

Treatment Method and Date:

CO DRMS approval site reclamation stating the site has meet regulatory requirements - formally released



PAD 10-6 / PAD AW-102

SECTION 6, T2S
R99W, 6th P.M.

(Hole AW 102 drilled within
existing 10-6 pad affected area)

Access Road Area = 0.96 Acre
On SFOGI Land
(pad and portion of access
road included in P-2003-022)

WATER GULCH ROAD

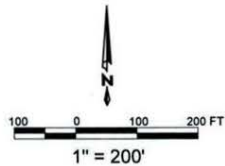
Access Road Area = 0.16 Acre
On Public Land
(portion included in P-2003-018)

CORRAL GULCH ROAD

Fenceline

S6 T2S R99W
S5 T2S R99W

**Pad 10-6
and
Pad AW-102
Site Map**



Report year: 2022

Approved Seed Mix: BLM standard mix #3 (1997 RMP) less Yellow sweet clover.

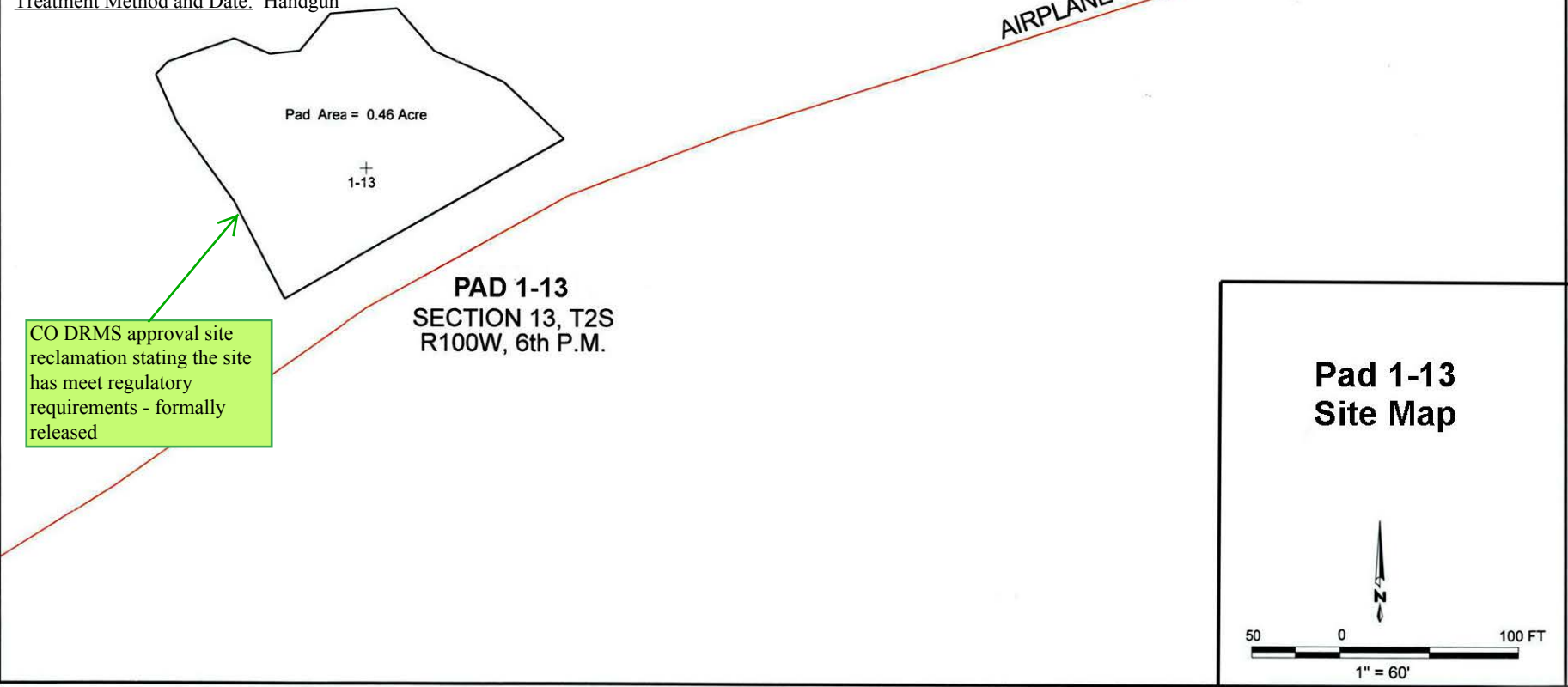
Status of Site for DRMS and BLM Annual Reports:

P&A completed on the single installed borehole (11/2009). Site has been ripped and graded in preparation for seeding. Weed control conducted annually 2012 through 2021. Noxious weed monitoring conducted each year. CO DRMS approval site reclamation stating the site has meet regulatory requirements - formally released

2022 Weed Control Observations: annuals.

Treatment:

Treatment Method and Date: Handgun



Report year: 2022

Approved Seed Mix: BLM standard mix #3 (1997 RMP) less Yellow sweet clover.

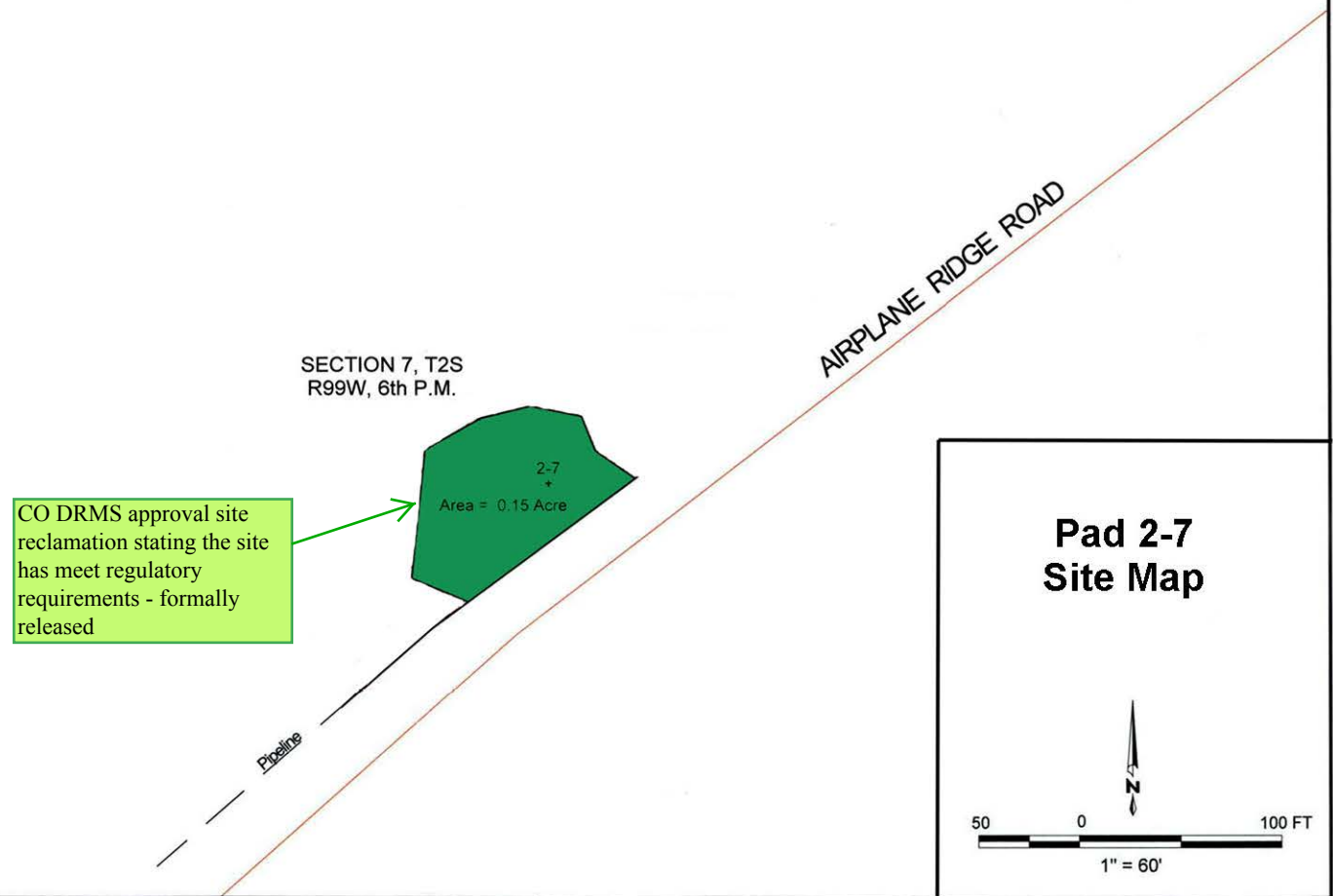
Status of Site for DRMS and BLM Annual Reports:

P&A completed on single installed borehole 11/2009. Site has been ripped and graded in preparation for seeding. Weed control conducted annually 2012 through 2022. Noxious weed monitoring conducted each year. CO DRMS approval site reclamation stating the site has meet regulatory requirements - formally released

2022 Weed Control Observations:

Treatment:

Treatment Method and Date:



Report year: 2022

Approved Seed Mix: BLM standard mix #3 (1997 RMP) less Yellow sweet clover.

Status of Site for DRMS and BLM Annual Reports:

P&A completed on the single installed borehole 10/2010. Site has been ripped and graded in preparation for seeding. Weed control conducted annually 2012 through 2021. Noxious weed monitoring conducted each year. CO DRMS approval site reclamation stating the site has meet regulatory requirements - formally released

2022 Weed Control Observations: annuals.

Treatment:

Treatment Method and Date:

23' Access Road
Area = 2.65 Acres

WATER GULCH ROAD

CO DRMS approval site
reclamation stating the site
has meet regulatory
requirements - formally
released

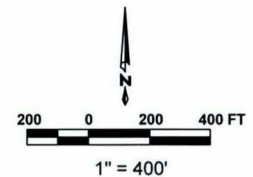
Pad Area = 0.21 Acre

PAD 3-1-L1
SECTION 1, T2S
R100W, 6th P.M.

CO DRMS approval site
reclamation stating the site
has meet regulatory
requirements - formally
released

Pad AW-102 / 10-6
SECTION 8, T2S
R99W, 6th P.M.

**Pad 3-1-L1
Site Map**



Report year: 2022

Approved Seed Mix: BLM standard mix #3 (1997 RMP) less Yellow sweet clover.

Status of Site for DRMS and BLM Annual Reports:

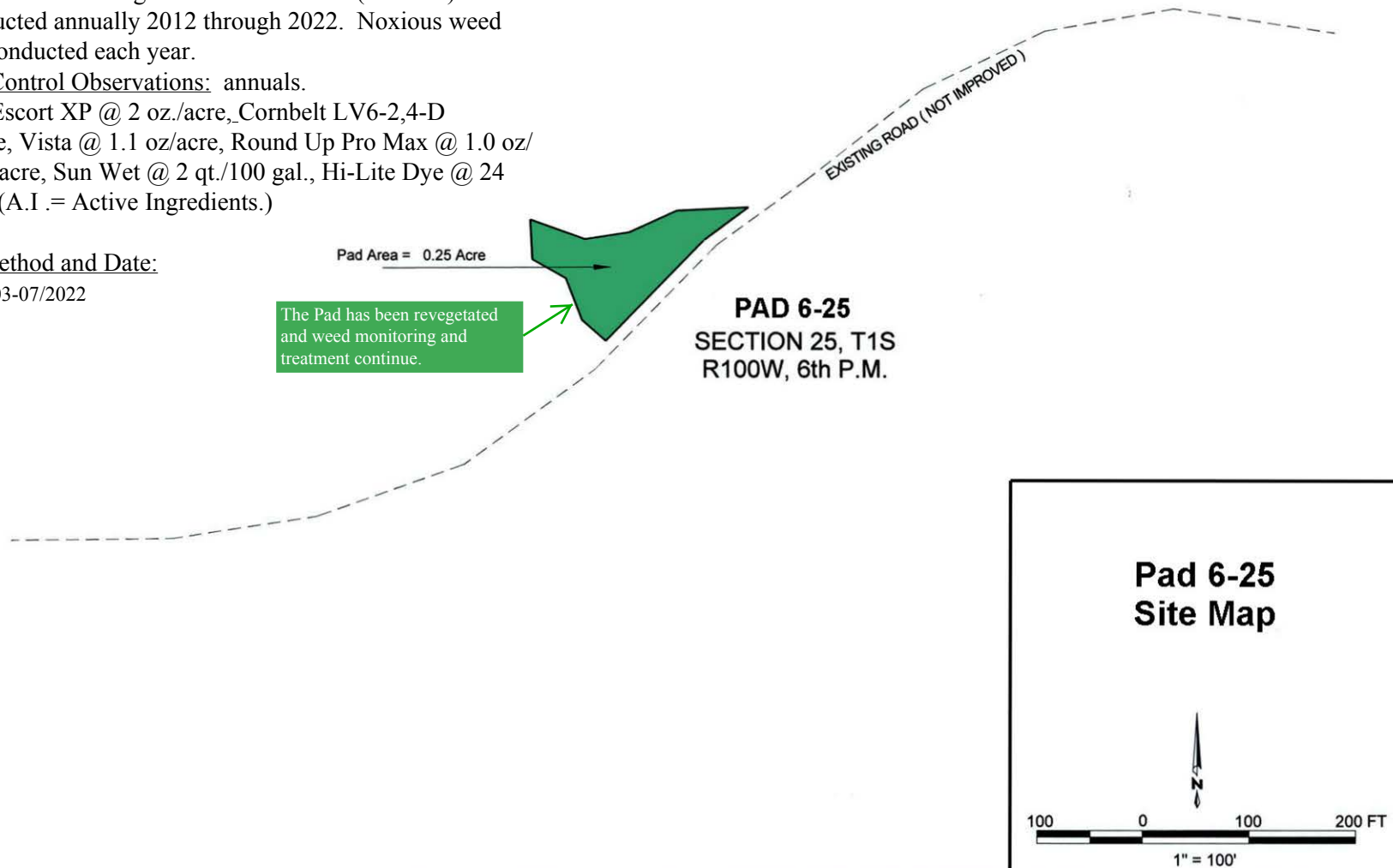
P&A completed on the single installed borehole (11/2007). Weed control conducted annually 2012 through 2022. Noxious weed monitoring conducted each year.

2022 Weed Control Observations: annuals.

Treatment: Escort XP @ 2 oz./acre, Cornbelt LV6-2,4-D @ 24 oz./acre, Vista @ 1.1 oz/acre, Round Up Pro Max @ 1.0 oz/acre, 1# A.I./acre, Sun Wet @ 2 qt./100 gal., Hi-Lite Dye @ 24 oz./100 gal. (A.I. = Active Ingredients.)

Treatment Method and Date:

Handgun 08/03-07/2022



Report year: 2022

Approved Seed Mix: BLM standard mix #6 (1997 RMP).

Status of Site for DRMS and BLM Annual Reports:

PP&A completed on the single 10-6 installed borehole (11/2007) and the single installed AW-102 borehole (11/2010). Pad regraded, soil material replaced, and area seeded 03/2004 (phase 2 interim reclamation). Additional seeding in 2010 (final reclamation phase). Weed control conducted annually 2012 through 2022. Noxious weed monitoring conducted each year.

2022 Weed Control Observations:

Treatment:

Treatment Method and Date:

CO DRMS approval site reclamation stating the site has meet regulatory requirements - formally released



PAD 10-6 / PAD AW-102

SECTION 6, T2S
R99W, 6th P.M.

(Hole AW 102 drilled within
existing 10-6 pad affected area)

Access Road Area = 0.96 Acre
On SFOGI Land
(pad and portion of access
road included in P-2003-022)

WATER GULCH ROAD

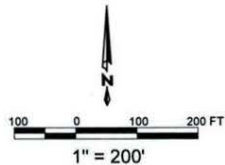
Access Road Area = 0.16 Acre
On Public Land
(portion included in P-2003-018)

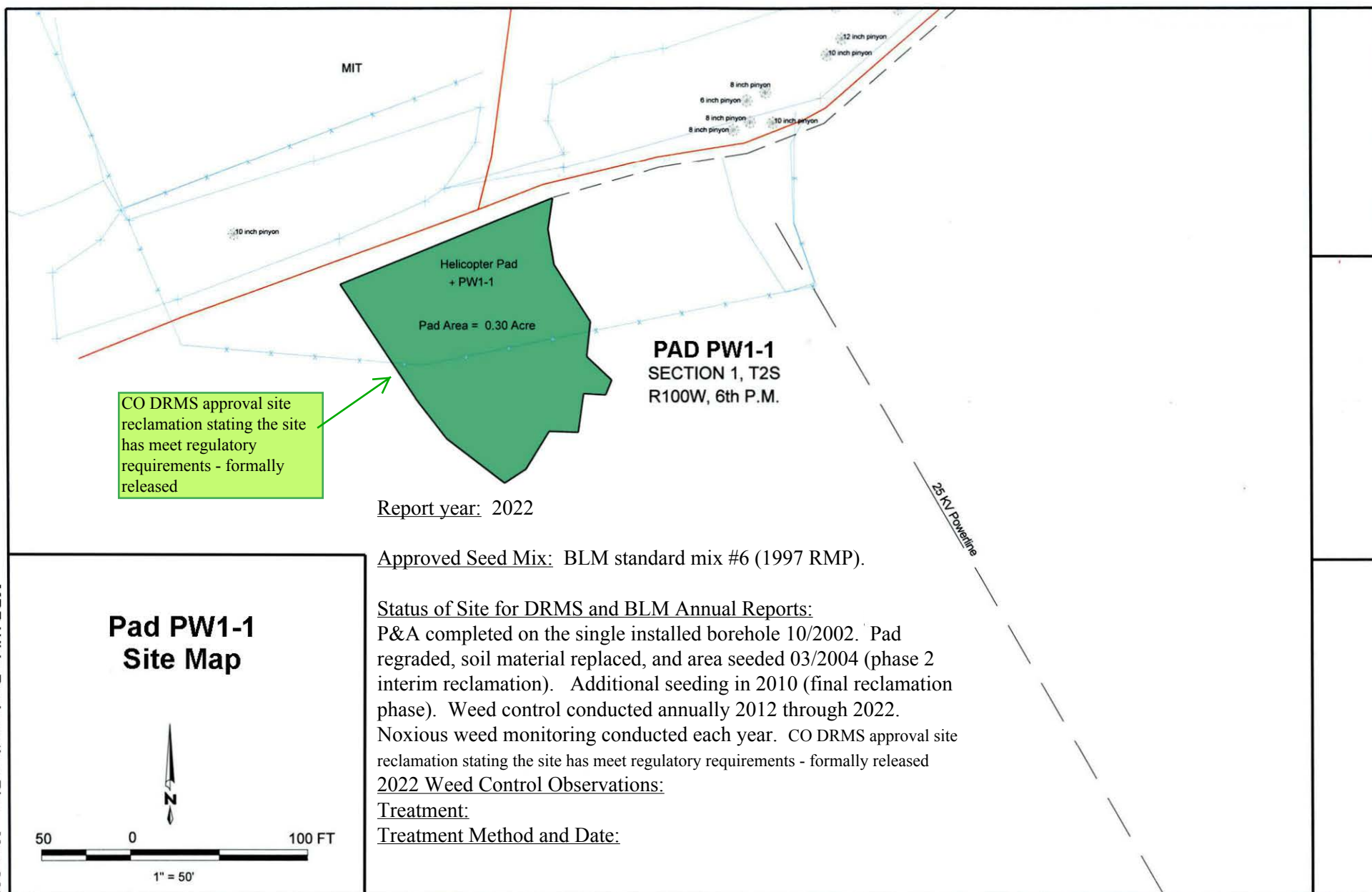
CORRAL GULCH ROAD

Fenceline

S6 T2S R99W
S5 T2S R99W

**Pad 10-6
and
Pad AW-102
Site Map**





Report year: 2022

Approved Seed Mix: BLM standard mix #6 (1997 RMP).

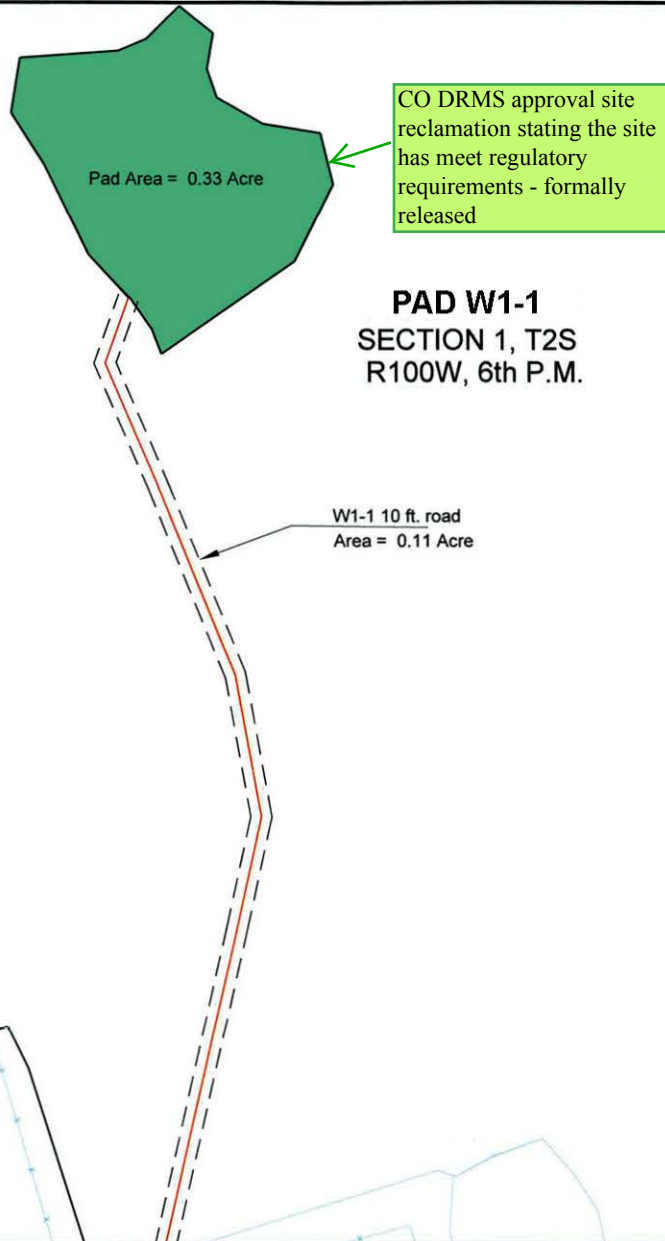
Status of Site for DRMS and BLM Annual Reports:

P&A completed on the single installed borehole 10/2002. Pad regraded, soil material replaced, and area seeded 03/2004 (phase 2 interim reclamation). Additional seeding in 2010 (final reclamation phase). Weed control conducted annually 2012 through 2022. Noxious weed monitoring conducted each year.

2022 Weed Control Observations: annuals.

Treatment:

Treatment Method and Date:



Pad W1-1 Site Map

