



STATE OF
COLORADO

Simmons - DNR, Leigh <leigh.simmons@state.co.us>

C1980007, West Elk Mine, August 30th Inspection Report

Simmons - DNR, Leigh <leigh.simmons@state.co.us>

Thu, Sep 7, 2023 at 11:13 PM

To: "Poulos, Nicki" <npoulos@archrsc.com>, "Wilczek, Jessica" <jwilczek@archrsc.com>, "Norris, Weston" <Wnorris@archrsc.com>

The report of the 8/30/23 inspection is attached.
As stated on page 4, please submit a MR for the concrete barriers.

Please let me know if you have any questions or comments.

Leigh Simmons
Environmental Protection Specialist



COLORADO
Division of Reclamation,
Mining and Safety
Department of Natural Resources

P 303.866.3567 x 8121 | C 720.220.1180 | F 303.832.8106
1313 Sherman Street, Room 215, Denver, CO 80203
leigh.simmons@state.co.us | <https://drms.colorado.gov>



InspectionReportWithAppendices.pdf


14828K



PERMIT INFORMATION

Permit Number: C-1980-007 Mine Name: West Elk Mine Operator: Mountain Coal Company, LLC Operator Address: Ms Nicki Poulos 5174 Highway 133 Somerset, CO 81434	County: Delta, Gunnison Operation Type: Underground Permit Status: Active Ownership: Private
	Operator Representative Present: Nicki Poulos, Jessica Wilczek, Weston Norris
Operator Representative Signature: (Field Issuance Only) 	

INSPECTION INFORMATION

Inspection Start Date: August 30, 2023 Inspection Start Time: 11:00 Inspection End Date: Inspection End Time:	Inspection Type: Coal Partial Inspection Inspection Reason: Normal I&E Program Weather: Clear
Joint Inspection Agency: None	Joint Inspection Contacts:
Post Inspection Agency: None	Post Inspection Contacts:
Inspector(s): Leigh Simmons	Inspector's Signature:  Signature Date: September 6, 2023

Inspection Topic Summary

NOTE: Y=Inspected N=Not Inspected R=Comments Noted V=Violation Issued NA=Not Applicable

N - Air Resource Protection	N - Roads
N - Availability of Records	N - Reclamation Success
N - Backfill & Grading	N - Revegetation
N - Excess Spoil and Dev. Waste	N - Subsidence
N - Explosives	N - Slides and Other Damage
N - Fish & Wildlife	N - Support Facilities On-site
R - Hydrologic Balance	N - Signs and Markers
N - Gen. Compliance With Mine Plan	N - Support Facilities Not On-site
N - Other	N - Special Categories Of Mining
N - Processing Waste	N - Topsoil

COMMENTS

This was a partial inspection by Leigh Simmons of the Division of Reclamation, Mining and Safety (Division). Jessica Wilczek and Weston Norris of Mountain Coal Company (MCC) accompanied the inspection. The weather was clear and dry. The mine was active.

MCC notified the Division at around 2.00 PM on August 28th that an unintended discharge to the North Fork of the Gunnison River had occurred that morning and had been reported to Colorado Department of Public Health and the Environment (CDPHE) via the Environmental Spill Reporting Hotline. The primary focus of this inspection was to investigate the reported discharge.

HYDROLOGIC BALANCE - Rule 4.05

Drainage Control 4.05.1, 4.05.2, 4.05.3; Siltation Structures 4.05.5, 4.05.6; Discharge Structures 4.05.7, 4.05.10; Diversions 4.05.4; Effluent Limits 4.05.2; Ground Water Monitoring 4.05.13; Surface Water Monitoring 4.05.13; Drainage – Acid and Toxic Materials 4.05.8; Impoundments 4.05.6, 4.05.9; Stream Buffer Zones 4.05.18:

Uncontrolled surface runoff from a disturbed area left the West Elk Mine during a storm event in the early hours of August 28th. The storm water runoff, which transported solid material from an area adjacent to the clean coal stockpile, left the site at the historic site entrance, on the south side of Highway 133, just east of Somerset. The water ran over the driveway apron, into the highway ditch, through the three highway culverts, and then to the North Fork of the Gunnison River. The approximate path taken by the storm water is shown with red dots on a Google Earth image from 2019 in Figure 1.

The run-off event was not observed while it was in progress. The offsite impact was first noticed by MCC staff at around 10AM, whereupon it was reported to the spill hotline. Clean-up efforts began immediately. Five-gallon buckets were used for the initial clean-up, and MCC reported that 15 gallons of material were recovered.

By the time of the inspection the rip-rap in the ditches on both sides of the highway up to around 30 feet from the river bank had been removed with an excavator and replaced with clean rip-rap; the final 30 feet had been

Number of Partial Inspection this Fiscal Year: 2

Number of Complete Inspections this Fiscal Year: 1

cleaned of mine-related solids by hand so as not to disturb the riparian vegetation along the bank, (see Figures 2-4).

Surface water and sediment control structures at the West Elk Mine are described in [section 2.05.3\(4\)](#) of the Permit Application Packet (PAP), on pages 2.05-31 through -41. References are made in the text to supporting information in Exhibits 43, 44, 47, 66 and 70, and to Maps 54, 54A and 54B. As stated in paragraph 3 of page 2.05-32, ditches and culverts have been designed to collect runoff from the 10-year, 24-hour (10y24h) storm event and direct it to the runoff ponds. Each ditch and culvert is identified using a naming convention based on its position in the flowpath to the sediment pond it reports to; for example, C5E-1 is the first culvert upstream of the MB-5E pond, and D3-2 is the second ditch segment upstream of the MB-3 pond. Ponds, ditches and culverts in the main facilities area are shown on [Map 54](#), a portion of which is given in Figure 4.

Storm water conveyed on the south side of the silo haul road, including runoff from the clean coal stockpile pad, reports to pond MB-3. The structures from ditch D3-2 downstream to pond MB-3 were inspected and found to be in good order, with no sign of having been breached (see Figures 7-9).

Storm water conveyed on the north side of the silo haul road reports to pond MB-5E. The complete flow network is rather complex, but from just upstream of the area of interest:

- Ditch D5E-1 terminates at a drop inlet which drops into a very long culvert, C5E-3.
- D5E-1A, which is a very short ditch segment covered with a steel grate, immediately in front of the old entrance gate, terminates at a second drop inlet into C5E-3.
- C5E-03 outlets west of pond MB-3 and discharges into C5E-2.
- C5E-2 and C5E-12 (conveying runoff from a different part of the facilities area) both discharge into a large concrete sediment trap, which discharges into C5E-1.
- C5E-1 runs all the way to pond MB5-E.

The designs for all ditches and culverts are based on SEDCAD+ modelling analyses, using the 10y24h, 25y24h, and 100y24h storm events, reported in Exhibit 66. Table 44E in the [Exhibit 66 introduction](#) gives a summary of ditch and culvert specifications.

- D5E-1 (Figure 10) is a v-shaped ditch with a synthetic liner. It was measured at approximately 8 feet wide and 20 inches deep (which exceeds the design specification). There was no sign of any breach of the ditch. Some sediment had been cleaned from around the drop inlet at the end of D5E-1 (Figure 11), but MCC reported that the structure had not been blocked.
- D5E-1A (Figure 16) is a rectangular section concrete trough, about 1 foot deep and 50 feet long, covered with a steel grating. The downstream end of the concrete trough opens into the second drop inlet to C5E-3 (Figure 17). The trough itself and the opening to the drop inlet were clear. The SEDCAD+ modelling for D5E-1A assumes that the structure will receive the runoff from an area of 0.010 acres, and the peak discharge during the 10y24h event will be 0.1 cubic feet per second, which is reasonable since only a very small area of the silo haul road immediately south of the gate would report to the ditch – this is best seen in Figure 6.

Number of Partial Inspection this Fiscal Year: 2

Number of Complete Inspections this Fiscal Year: 1

- C5E-3 (Figure 12) is a 24 inch culvert, as is specified in the approved design. It was clear of sediment.
- C5E-2 is also a 24 inch culvert. It was also clear, however a lot of sediment had accumulated in the sediment trap at the outlet of C5E-2 (Figure 13). Water was still flowing, and the tide line on the concrete wall showed that the trap had not overflowed, but the trap needed to be cleaned. MCC completed the cleaning and sent photographs the following day (Figures 14 and 15).
- C5E-1 is a 48 inch culvert. Besides the sediment around the inlet in the trap, it was clear. Pond MB-5E was in good shape, with ample capacity. The pond had not discharged.

It appeared that storm water had temporarily overwhelmed the drainage capacity of D5E-1A and had flowed over the steel grating and out of the gate as previously described. No other structures had failed or been compromised.

The rainfall depth parameter that informs the design of the entire surface water control system at the West Elk Mine was determined by Greystone consultants in 1993, and adopted by Tetra-Tech in 2010 at the time Exhibit 66 was added to the PAP. The rainfall depths for the 10y24h, 25y24h and 100y24h events were determined to be 1.9 inches, 2.3 inches and 2.8 inches, respectively, using NOAA Atlas 2 Precipitation-Frequency Atlas of the Western United State, Volume III – Colorado. Atlas 2 was superseded by Atlas 14 from 2004, with Volume 8 (which includes Colorado) published in 2013. The data is available online from NOAA's [Precipitation Frequency Data Server](#). A copy of the Precipitation Frequency Data Table for Somerset, CO is given in Figure 18. It shows that the current estimates for the 10y24h, 25y24h and 100y24h events are 1.90, 2.27 and 2.86 inches respectively – relatively unchanged from those used in the West Elk PAP.

MCC maintains a weather station at the mine, located approximately 700 feet due south of the area of interest; the weather station is described on Page 2.05-23 of the PAP, and its location is shown on Map 53. MCC provided the Division with precipitation data from the weather station (see Appendix A), which shows that 1.09 inches of rain fell over a 24 hour period on August 28th, which is considerably less than the estimated 10y24h event. However, 1.01 of the 1.09 inches fell in a 60 minute period between 2AM and 3AM; referring to the NOAA table in Figure 18, this would correspond to the 25y60m event.

MCC also provided the Division with a copy of surface maintenance records from 4/1/23 through 8/20/23, and an invoice from their contractor, D&S Underground, for ditch cleaning and road preparation work (ready for Magnesium chloride treatment), from June 2023. The records show that ditch, culvert and sediment trap maintenance is a regular and ongoing activity – this is borne out by observations made during inspections over several years.

In order to mitigate the risk of a similar occurrence happening again MCC plans to install concrete barriers on the north side of D5E-1A, just inside the gate. This proposal should be made formally with a Minor Revision application.

Number of Partial Inspection this Fiscal Year: 2

Number of Complete Inspections this Fiscal Year: 1

DOCUMENTS RECEIVED

- Photographs of cleaned sediment trap (Figures 14 and 15)
- Weather station data (Appendix A)
- Surface maintenance records (Appendix B)

OTHER (SPECIFY)

N/A

ENFORCEMENT ACTIONS/COMPLIANCE

Although it is a fact that uncontrolled storm water left the West Elk Mine's disturbed area and transported mine-related solids to the North Fork of the Gunnison River on August 28th, 2023, the Division does not find that MCC was in violation of the Rules or the conditions of the approved Permit Application Packet, so no enforcement action is warranted. The following points support this decision:

- The surface water control structures were designed in accordance with the Rules, and installed in accordance with the approved design.
- The surface water control structures were properly maintained.
- The storm event was of short duration, but unusually high intensity – equivalent to the 25y60m event.
- The discharge was reported promptly and correctly by MCC.
- The damage was cleaned up by MCC and their contractors quickly and thoroughly.
- MCC has a plan to mitigate the risk of a similar event happening in the future.

Number of Partial Inspection this Fiscal Year: 2

Number of Complete Inspections this Fiscal Year: 1

PHOTOGRAPHS



Figure 1: Approximate course of offsite discharge

Number of Partial Inspection this Fiscal Year: 2

Number of Complete Inspections this Fiscal Year: 1



Figure 2: Overview of discharge location

Number of Partial Inspection this Fiscal Year: 2

Number of Complete Inspections this Fiscal Year: 1



Figure 3: Drone image from north side of Highway 133 looking south, showing highway culverts with clean riprap and fresh straw bales

Number of Partial Inspection this Fiscal Year: 2

Number of Complete Inspections this Fiscal Year: 1



Figure 4: Drone image from north side of Highway 133 looking north, showing rip-rapped highway ditch leading to North Fork of the Gunnison River

Number of Partial Inspection this Fiscal Year: 2

Number of Complete Inspections this Fiscal Year: 1

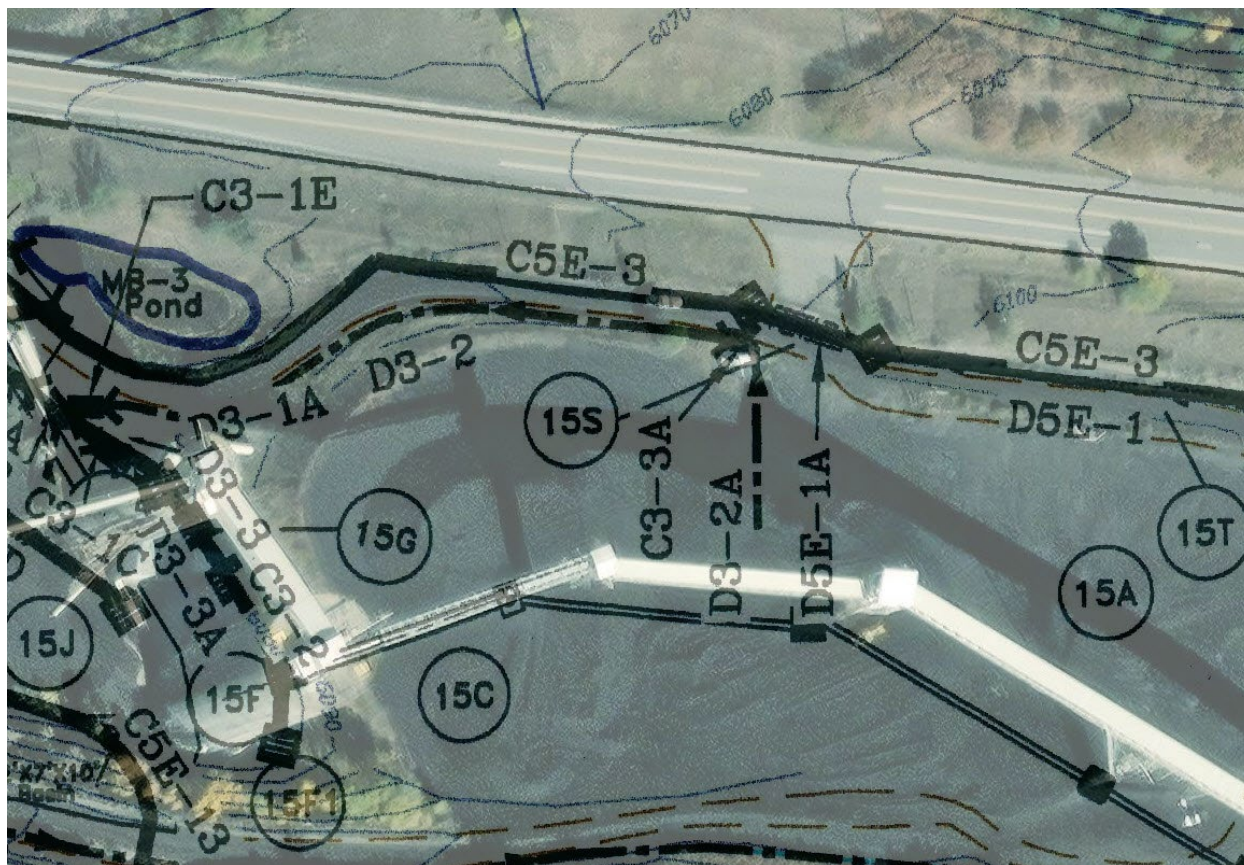


Figure 5: Screenshot of portion of Map 54, overlaid on Esri imagery basemap

Number of Partial Inspection this Fiscal Year: 2

Number of Complete Inspections this Fiscal Year: 1



Figure 6: Annotated drone image showing ditches and culverts around the discharge location

Number of Partial Inspection this Fiscal Year: 2

Number of Complete Inspections this Fiscal Year: 1



Figure 7: D3-2

Number of Partial Inspection this Fiscal Year: 2

Number of Complete Inspections this Fiscal Year: 1



Figure 8: Sediment trap at C3-1A outlet/C3-1 inlet



Figure 9: MB-3 pond

Number of Partial Inspection this Fiscal Year: 2

Number of Complete Inspections this Fiscal Year: 1



Figure 10: D5E-1

Number of Partial Inspection this Fiscal Year: 2

Number of Complete Inspections this Fiscal Year: 1



Figure 11: Drop inlet from D5E-1 into C5E-3

Number of Partial Inspection this Fiscal Year: 2

Number of Complete Inspections this Fiscal Year: 1



Figure 12: C5E-3 at first drop inlet



Figure 13: Sediment trap at outlet of C5E-2 (right), inlet of C5E-1 (left). Needs to be cleaned out.

Number of Partial Inspection this Fiscal Year: 2

Number of Complete Inspections this Fiscal Year: 1



Figure 14: Sediment trap at outlet of C5E-2 following cleaning (1 of 2)

Number of Partial Inspection this Fiscal Year: 2

Number of Complete Inspections this Fiscal Year: 1



Figure 15: Sediment trap at outlet of C5E-2 following cleaning (2 of 2)

Number of Partial Inspection this Fiscal Year: 2

Number of Complete Inspections this Fiscal Year: 1



Figure 16: D5E-1A

Number of Partial Inspection this Fiscal Year: 2

Number of Complete Inspections this Fiscal Year: 1



Figure 17: Grating above drop inlet from D5E-1A into C5E-3

Number of Partial Inspection this Fiscal Year: 2

Number of Complete Inspections this Fiscal Year: 1

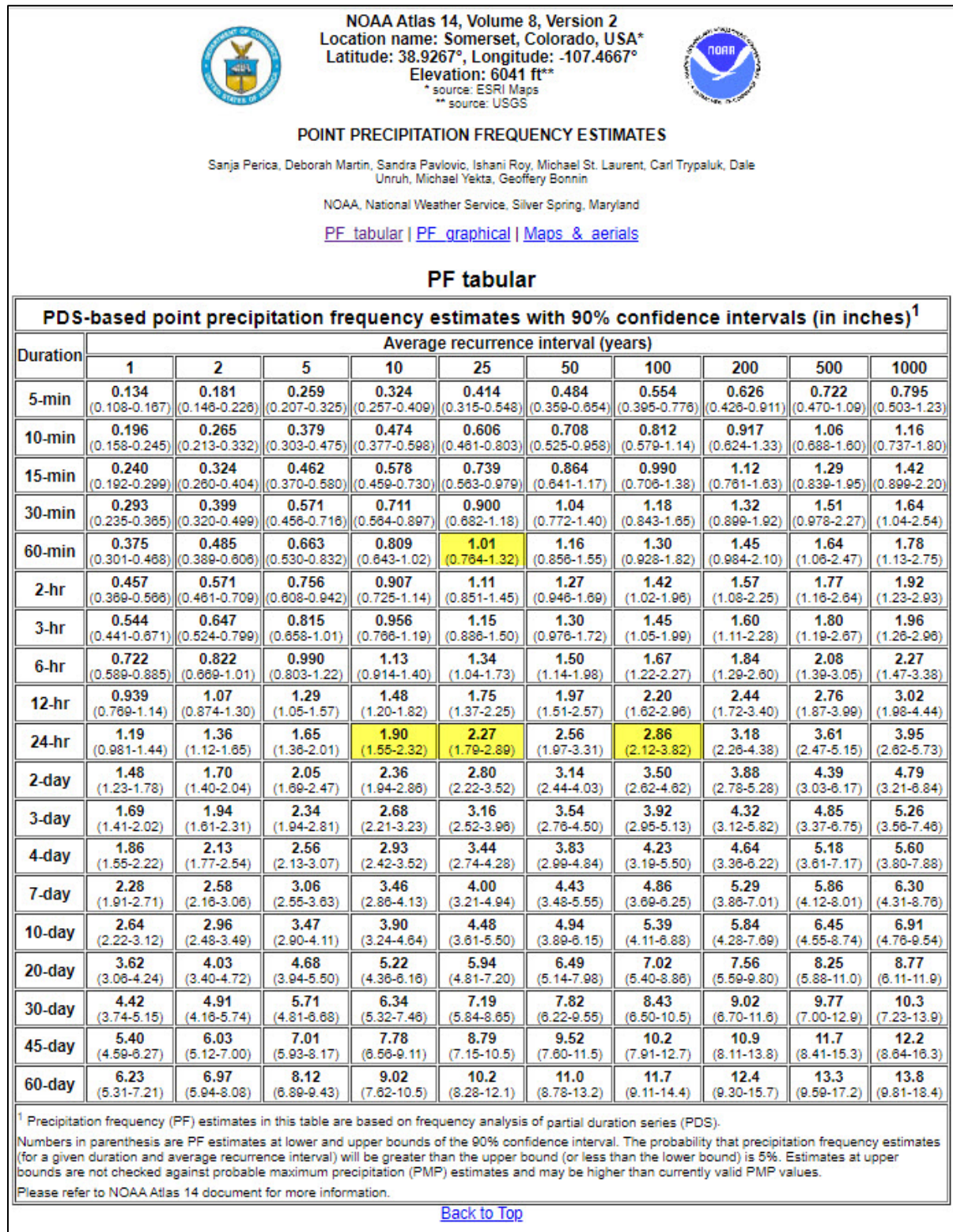


Figure 18: Precipitation Frequency Data Table for Somerset, CO

Number of Partial Inspection this Fiscal Year: 2Number of Complete Inspections this Fiscal Year: 1

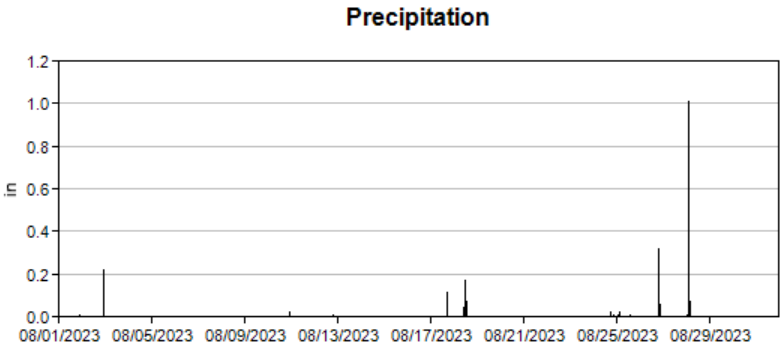
Appendix A: Weather station data

Environmental Data Display

Precipitation

August2023

Change Units



Day	Hr01	Hr02	Hr03	Hr04	Hr05	Hr06	Hr07	Hr08	Hr09	Hr10	Hr11	Hr12	Hr13	Hr14	Hr15	Hr16	Hr17	Hr18	Hr19	Hr20	Hr21	Hr22	Hr23	Hr24	Total	Max
1	0.00	0.00	0.00	0.00	0.00	0.00	0.00	0.00	0.00	0.00	0.00	0.00	0.00	0.00	0.00	0.00	0.00	0.00	0.00	0.00	0.00	0.01	0.00	0.00	0.01	0.01
2	0.00	0.00	0.00	0.00	0.00	0.00	0.00	0.00	0.00	0.00	0.00	0.00	0.00	0.00	0.00	0.00	0.00	0.00	0.00	0.00	0.00	0.10	0.22	0.00	0.32	0.22
3	0.00	0.00	0.00	0.00	0.00	0.00	0.00	0.00	0.00	0.00	0.00	0.00	0.00	0.00	0.00	0.00	0.00	0.00	0.00	0.00	0.00	0.00	0.00	0.00	0.00	0.00
4	0.00	0.00	0.00	0.00	0.00	0.00	0.00	0.00	0.00	0.00	0.00	0.00	0.00	0.00	0.00	0.00	0.00	0.00	0.00	0.00	0.00	0.00	0.00	0.00	0.00	0.00
5	0.00	0.00	0.00	0.00	0.00	0.00	0.00	0.00	0.00	0.00	0.00	0.00	0.00	0.00	0.00	0.00	0.00	0.00	0.00	0.00	0.00	0.00	0.00	0.00	0.00	0.00
6	0.00	0.00	0.00	0.00	0.00	0.00	0.00	0.00	0.00	0.00	0.00	0.00	0.00	0.00	0.00	0.00	0.00	0.00	0.00	0.00	0.00	0.00	0.00	0.00	0.00	0.00
7	0.00	0.00	0.00	0.00	0.00	0.00	0.00	0.00	0.00	0.00	0.00	0.00	0.00	0.00	0.00	0.00	0.00	0.00	0.00	0.00	0.00	0.00	0.00	0.00	0.00	0.00
8	0.00	0.00	0.00	0.00	0.00	0.00	0.00	0.00	0.00	0.00	0.00	0.00	0.00	0.00	0.00	0.00	0.00	0.00	0.00	0.00	0.00	0.00	0.00	0.00	0.00	0.00
9	0.00	0.00	0.00	0.00	0.00	0.00	0.00	0.00	0.00	0.00	0.00	0.00	0.00	0.00	0.00	0.00	0.00	0.00	0.00	0.00	0.00	0.00	0.00	0.00	0.00	0.00
10	0.00	0.00	0.00	0.00	0.00	0.00	0.00	0.00	0.00	0.00	0.00	0.00	0.00	0.00	0.00	0.00	0.00	0.00	0.00	0.00	0.00	0.02	0.00	0.00	0.02	0.02
11	0.00	0.00	0.00	0.00	0.00	0.00	0.00	0.00	0.00	0.00	0.00	0.00	0.00	0.00	0.00	0.00	0.00	0.00	0.00	0.00	0.00	0.00	0.00	0.00	0.00	0.00
12	0.00	0.00	0.00	0.00	0.00	0.00	0.00	0.00	0.00	0.00	0.00	0.00	0.00	0.00	0.00	0.00	0.00	0.00	0.01	0.00	0.00	0.00	0.00	0.00	0.01	0.01
13	0.00	0.00	0.00	0.00	0.00	0.00	0.00	0.00	0.00	0.00	0.00	0.00	0.00	0.00	0.00	0.00	0.00	0.00	0.00	0.00	0.00	0.00	0.00	0.00	0.00	0.00
14	0.00	0.00	0.00	0.00	0.00	0.00	0.00	0.00	0.00	0.00	0.00	0.00	0.00	0.00	0.00	0.00	0.00	0.00	0.00	0.00	0.00	0.00	0.00	0.00	0.00	0.00
15	0.00	0.00	0.00	0.00	0.00	0.00	0.00	0.00	0.00	0.00	0.00	0.00	0.00	0.00	0.00	0.00	0.00	0.00	0.00	0.00	0.00	0.00	0.00	0.00	0.00	0.00
16	0.00	0.00	0.00	0.00	0.00	0.00	0.00	0.00	0.00	0.00	0.00	0.00	0.00	0.00	0.00	0.00	0.00	0.00	0.00	0.00	0.00	0.00	0.00	0.00	0.00	0.00
17	0.00	0.00	0.00	0.00	0.00	0.00	0.00	0.00	0.00	0.00	0.00	0.00	0.00	0.00	0.00	0.00	0.11	0.01	0.00	0.00	0.00	0.00	0.00	0.00	0.12	0.11
18	0.00	0.00	0.00	0.00	0.00	0.00	0.00	0.00	0.00	0.00	0.04	0.17	0.07	0.00	0.00	0.00	0.00	0.00	0.00	0.00	0.00	0.00	0.00	0.00	0.28	0.17
19	0.00	0.00	0.00	0.00	0.00	0.00	0.00	0.00	0.00	0.00	0.00	0.00	0.00	0.00	0.00	0.00	0.00	0.00	0.00	0.00	0.00	0.00	0.00	0.00	0.00	0.00
20	0.00	0.00	0.00	0.00	0.00	0.00	0.00	0.00	0.00	0.00	0.00	0.00	0.00	0.00	0.00	0.00	0.00	0.00	0.00	0.00	0.00	0.00	0.00	0.00	0.00	0.00
21	0.00	0.00	0.00	0.00	0.00	0.00	0.00	0.00	0.00	0.00	0.00	0.00	0.00	0.00	0.00	0.00	0.00	0.00	0.00	0.00	0.00	0.00	0.00	0.00	0.00	0.00
22	0.00	0.00	0.00	0.00	0.00	0.00	0.00	0.00	0.00	0.00	0.00	0.00	0.00	0.00	0.00	0.00	0.00	0.00	0.00	0.00	0.00	0.00	0.00	0.00	0.00	0.00
23	0.00	0.00	0.00	0.00	0.00	0.00	0.00	0.00	0.00	0.00	0.00	0.00	0.00	0.00	0.00	0.00	0.00	0.00	0.00	0.00	0.00	0.00	0.00	0.00	0.00	0.00
24	0.00	0.00	0.00	0.00	0.00	0.00	0.00	0.00	0.00	0.00	0.00	0.00	0.00	0.00	0.00	0.00	0.00	0.00	0.02	0.00	0.00	0.01	0.00	0.00	0.03	0.02
25	0.00	0.01	0.02	0.00	0.00	0.00	0.00	0.00	0.00	0.00	0.00	0.00	0.00	0.01	0.00	0.00	0.00	0.00	0.00	0.00	0.00	0.00	0.00	0.00	0.04	0.02
26	0.00	0.00	0.00	0.00	0.00	0.00	0.00	0.00	0.00	0.00	0.00	0.00	0.00	0.00	0.00	0.00	0.00	0.00	0.32	0.06	0.00	0.00	0.00	0.00	0.38	0.32
27	0.00	0.00	0.00	0.00	0.00	0.00	0.00	0.00	0.00	0.00	0.00	0.00	0.00	0.00	0.00	0.00	0.00	0.00	0.00	0.00	0.00	0.00	0.00	0.00	0.00	0.00
28	0.00	0.01	1.01	0.07	0.00	0.00	0.00	0.00	0.00	0.00	0.00	0.00	0.00	0.00	0.00	0.00	0.00	0.00	0.00	0.00	0.00	0.00	0.00	0.00	1.09	1.01
29	0.00	0.00	0.00	0.00	0.00	0.00	0.00	0.00	0.00	0.00	0.00	0.00	0.00	0.00	0.00	0.00	0.00	0.00	0.00	0.00	0.00	0.00	0.00	0.00	0.00	0.00
30	0.00	0.00	0.00	0.00	0.00	0.00	0.00	0.00	0.00	0.00	0.00	0.00	0.00	0.00	0.00	0.00	0.00	0.00	0.00	0.00	0.00	0.00	0.00	0.00	0.00	0.00
31	0.00	0.00	0.00	0.00	0.00	0.00	0.00	0.00	0.00	0.00	0.00	0.00	0.00	0.00	0.00	0.00	0.00	0.00	0.00	0.00	0.00	0.00	0.00	0.00	0.00	0.00

Monthly Total2.30

Hourly Max1.01

Export To Excel

Date	Hour	Wind Speed (mph)	Wind Gust (mph)	Wind Direction (°)	Sigma Theta (°)	2 Meter Temperature (°C)	10 Meter Temperature (°C)	Delta T (°C)	Relative Humidity (%)	Hourly Precipitation (in)
8/28/2023	115	9.8	17.2	105.1	14.9	15.3	15.2	-0.06	73.98	0
8/28/2023	130	8.9	19.5	122.1	26.9	15.4	15.3	-0.08	72.76	0
8/28/2023	145	6.5	13.7	113.0	29.4	15.3	15.3	-0.05	72.38	0
8/28/2023	200	8.5	13.3	125.7	18.3	15.1	15.1	0.03	74.30	0.01
8/28/2023	215	6.9	14.9	169.8	56.7	14.5	14.9	0.38	77.59	0.14
8/28/2023	230	9.0	20.2	275.2	22.7	13.6	14.3	0.68	84.80	0.61
8/28/2023	245	3.8	9.4	262.3	52.7	13.7	14.4	0.69	89.10	0.22
8/28/2023	300	4.2	9.4	119.5	57.4	13.8	14.6	0.79	90.20	0.04
8/28/2023	315	6.8	15.3	113.4	19.6	13.8	14.3	0.44	90.40	0.03
8/28/2023	330	10.7	21.5	86.2	19.9	13.7	13.8	0.18	90.80	0.03
8/28/2023	345	12.2	24.7	89.2	21.8	13.8	13.9	0.08	91.10	0.01
8/28/2023	400	17.1	28.4	73.0	15.0	14.1	14.4	0.34	90.70	0
8/28/2023	415	13.9	24.3	73.2	14.3	14.6	15.1	0.56	89.60	0
8/28/2023	430	9.8	19.2	94.3	26.7	14.8	15.3	0.44	87.70	0
8/28/2023	445	7.5	14.7	89.4	19.2	14.4	14.6	0.18	86.40	0
8/28/2023	500	5.6	13.1	106.2	26.1	14.2	14.3	0.14	87.20	0

Appendix B: Surface maintenance records

SURFACE OPERATIONS SHIFT REPORT

DATE: 4 / 1 / 23

SHIFT: GRAVE DAY SWING WKND

SUPERVISOR: J Clawson

Operators Present: Rodger, Pete, Ernie, Dan, Justin, Travis

Prep Plant Operator: Mike, Nathan, Dominic

Absent/Reason: _____

TASKS PERFORMED

Coal Handling: Push to Prep Plant, Push away STS
Haul Refuse, Clean North Road Along ROM Pile

Train Loading :

Train ID & Customer	Loaded from	Delays/Concerns

Facilities Cleaning: Shop inspection, Bottom of Silos.
Projects Complete: Trash Run, Fuel Heaters

TURNOVER INFORMATION

Equipment Status: Service LD10 Complete 750 Hrs SU12871 w/o

Train Information :

Train ID & Customer	Current Location	Projected Arrival Time/Other

Projects in Progress: Clean Ditches, Fuel Refuse Equipment
Fuel Pumps Changing Rollers TLO Sampler Cutters

Downtime Projects: Permiss

Other Information: Drain Containment @ TLO

SURFACE OPERATIONS SHIFT REPORT

DATE: 4 / 1 / 23SHIFT: GRAVE ~~DAY~~ SWING WKNDSUPERVISOR: TanOperators Present: Colin, Levy, Lonic, Adam, AJ, ShawnPrep Plant Operator: Alan, TylerAbsent/Reason: Dale (S3)

TASKS PERFORMED

Coal Handling: Push to plant, push away fines

Train Loading :

Train ID & Customer	Loaded from	Delays/Concerns

Facilities Cleaning: Cleaned under plant feedProjects Complete: Sly Gulch Dailies, Filled in pot holes on portal Bench, Reported fire supp. on DZ-9 Fueler Heaters & pumps, CH4 calcs, Cleared Road up to 2308, weekly Degass pumps

TURNOVER INFORMATION

Equipment Status: Fueler Dozer 8,9

Train Information :

Train ID & Customer	Current Location	Projected Arrival Time/Other

Projects in Progress: Sly Gulch weekly's, Clean DitchesDowntime Projects: Other Information:

SURFACE OPERATIONS SHIFT REPORT

DATE: 4 / 2 / 23

SHIFT: GRAVE DAY SWING WKND

SUPERVISOR: J Clawson

Operators Present: Rodger Pete Ernie Dan Justin

Prep Plant Operator: Mike Nathan Travis

Absent/Reason: Dominic

TASKS PERFORMED

Coal Handling: Push to Prep Plant, Push away ST 5
Haul Refuse

Train Loading :

Train ID & Customer	Loaded from	Delays/Concerns

Facilities Cleaning: Shop inspection

Projects Complete: Trash Rm, Fuel Heaters, V-19 Daily, Fuel Pumps

TURNOVER INFORMATION

Equipment Status: Service BC 22, Fueled UT 18,

Train Information :

Train ID & Customer	Current Location	Projected Arrival Time/Other

Projects in Progress: Permiss, Moving Coal East on Rom Pile

Downtime Projects: Ditch Cleaning

Other Information: Monthly on TLO Belt and ^{TLO} Sampler Complete.

SURFACE OPERATIONS SHIFT REPORT

DATE: 4 / 4 / 23

SHIFT: GRAVE DAY SWING WKND

SUPERVISOR: J Clawson

Operators Present: Rodger Pete Ernie Dan Justin Travis
Colin Seth 10 Hrs

Prep Plant Operator: Mike Nathan Dominic

Absent/Reason: _____

TASKS PERFORMED

Coal Handling: Push to Prep Plant Push Coal From West Boundary
Push away ST5 Clean up ST3

Train Loading :

Train ID & Customer	Loaded from	Delays/Concerns

Facilities Cleaning: Ditch along South Side for 200' Refuse Bin
 Projects Complete: Clean Roadway North Side Room Push Snow
Grease R-5 Belt Grease Dozer Feeder and TCI and Plant Feed

TURNOVER INFORMATION

Equipment Status: DZ 8 Service Due

Train Information :

Train ID & Customer	Current Location	Projected Arrival Time/Other

Projects in Progress: Permiss, Monitor Fan Heaters

Downtime Projects: _____

Other Information: Deer Creek Weekly Put Air line Anti Freeze V-19
V-19 New Batterys

SURFACE OPERATIONS SHIFT REPORT

DATE: 4 / 6 / 23

SHIFT: GRAVE DAY SWING WKND

SUPERVISOR: J Clawson

Operators Present: Dan, Pete, Ernie, Justin Travis

Prep Plant Operator: Mike Dominic Nathan

Absent/Reason: Rodger

TASKS PERFORMED

Coal Handling: Push to Prep Plant, Push coal away from West Bundry
Push away STS, Push away ST1

Train Loading :

Train ID & Customer	Loaded from	Delays/Concerns

Facilities Cleaning: Clean up ongoing around Dozer Feeder
Projects Complete: Environmental Dailys Water Roads as needed
Sty Gulch Dailys

TURNOVER INFORMATION

Equipment Status: D27 Lower Pile, D28 D25 D29 ROM Pile

Train Information :

Train ID & Customer	Current Location	Projected Arrival Time/Other

Projects in Progress: Permiss, clean Ditch,

Downtime Projects: Belt Pms, Road maintenance,

Other Information: Fueled Heaters Fueled UT18

SURFACE OPERATIONS SHIFT REPORT

DATE: 4 / 7 / 23

SHIFT: GRAVE DAY SWING WKND

SUPERVISOR: Jim

Operators Present: curt Jim Leno Travis Seth

Prep Plant Operator: camden Josh Mario

Absent/Reason: _____

TASKS PERFORMED

Coal Handling: Rem to st1 / push to plant
push on st5

Train Loading :

Train ID & Customer	Loaded from	Delays/Concerns

Facilities Cleaning: Clean Tc1 Tail area From plug
Projects Complete: done dailys in Sly gulch / weekly on degas

TURNOVER INFORMATION

Equipment Status: replace large wash down pump
trouble shut drivers door P35 / trouble shot brakes on UT21
replaced belt tensioner on DZ7

Train Information :

Train ID & Customer	Current Location	Projected Arrival Time/Other

Projects in Progress: LD9 in Shop working on oil leak in Front end

Downtime Projects: build berm on north side of pile on st3

Other Information: _____

SURFACE OPERATIONS SHIFT REPORT

DATE: 4 / 14 / 23

SHIFT: GRAVE DAY SWING WKND

SUPERVISOR: Jim

Operators Present: Curt Jim Leno Travis Seth

Prep Plant Operator: Camden Masio Josh

Absent/Reason: _____

TASKS PERFORMED

Coal Handling: Rem to STL / push to plant / push STL

Train Loading :

Train ID & Customer	Loaded from	Delays/Concerns

Facilities Cleaning: _____

Projects Complete: hauled trash / Fuel heaters

TURNOVER INFORMATION

Equipment Status: put Bc22 back together engine B/o

clean upper silt traps and rocks out of ditch

Train Information :

Train ID & Customer	Current Location	Projected Arrival Time/Other

Projects in Progress: backwash river and monitor pond

Downtime Projects: _____

Other Information: _____

SURFACE OPERATIONS SHIFT REPORT

DATE: 5 / 2 / 23

SHIFT: GRAVE DAY SWING WKND

SUPERVISOR: J Clawson

Operators Present: Ernie Pete Dan Mathew (Lonnie 8)

Prep Plant Operator: Nathan, Mike Travis

Absent/Reason: Rodger Justin OSD

TASKS PERFORMED

Coal Handling: Push to Prep Plant Push up Fines
push away ST5

Train Loading :

Train ID & Customer	Loaded from	Delays/Concerns

Facilities Cleaning: _____
Projects Complete: _____

TURNOVER INFORMATION

Equipment Status: DZ9 engine installed Fuel tank on P24 leaking

Train Information :

Train ID & Customer	Current Location	Projected Arrival Time/Other

Projects in Progress: Empty Sand truck Permiss

Downtime Projects: _____

Other Information: Water Roads Blade Roads Clean Ditch

SURFACE OPERATIONS SHIFT REPORT

DATE: 5 / 7 / 23

SHIFT: GRAVE DAY SWING WKND

SUPERVISOR: Jim

Operators Present: cust Travis Leno Jim Seth

Prep Plant Operator: camden Mario Josh

Absent/Reason: _____

TASKS PERFORMED

Coal Handling: push to plant / push St 5
Wells hauling Fines / Stack Fines on St 3

Train Loading :

Train ID & Customer	Loaded from	Delays/Concerns

Facilities Cleaning: _____

Projects Complete: done dailys and Finished weeklys in Sly gulch
unload Shipping containers

TURNOVER INFORMATION

Equipment Status: clean shots on TCI and dozer feeder

Train Information :

Train ID & Customer	Current Location	Projected Arrival Time/Other

Projects in Progress: Shuttle people / clean on St 1 drive tower

Downtime Projects: clean south ditch on Rom pad and work on north
side

Other Information: _____

SURFACE OPERATIONS SHIFT REPORT

DATE: 5 / 13 / 23

SHIFT: ~~GRAVE~~ DAY SWING WKND

SUPERVISOR: Jim

Operators Present: Curt Travis Leno Jim Seth

Prep Plant Operator: camden Mario Josh

Absent/Reason: _____

TASKS PERFORMED

Coal Handling: push to plant / push STS
Empty bunker

Train Loading :

Train ID & Customer	Loaded from	Delays/Concerns

Facilities Cleaning: _____

Projects Complete: hauled trash

TURNOVER INFORMATION

Equipment Status: Service DZ7 / Fuel UT7

Train Information :

Train ID & Customer	Current Location	Projected Arrival Time/Other

Projects in Progress: Shuttle people

Downtime Projects: blake north road on Rem

Other Information: _____

SURFACE OPERATIONS SHIFT REPORT

DATE: 5 / 28 / 23

SHIFT: GRAVE DAY SWING WKND

SUPERVISOR: Ja

Operators Present: Colin, Lennie, Levy, Adam, AJ, Shanon

Prep Plant Operator: Allen, Tyler

Absent/Reason: Dale 50

TASKS PERFORMED

Coal Handling: Push to plant, push away from, push to train, push away st-5

Train Loading :

Train ID & Customer	Loaded from	Delays/Concerns
<u>ALSCM 12</u>	<u>St4 - 42 cars St5 9 cars</u>	
<u>ALSMCM 12</u>	<u>St4 - 42 cars St5 - 9 cars</u>	

Facilities Cleaning: Cleaned TWO After train, Cleaned Around Digger Feeder

Projects Complete: Sly Gulch Ditches/weekly, escapeway Drill & Remove and transfer, cleaning Ditches
Repaired fenders on L.D-H, Permiss, watered Roads, Opacity

TURNOVER INFORMATION

Equipment Status: _____

Train Information :

Train ID & Customer	Current Location	Projected Arrival Time/Other

Projects in Progress: Wells hauling Gob

Downtime Projects: _____

Other Information: _____

SURFACE OPERATIONS SHIFT REPORT

DATE: 6 / 1 / 23

SHIFT: ~~GRAVE~~ DAY SWING WKND

SUPERVISOR: SD

Operators Present: Scott Doug Ian Josh

Prep Plant Operator: Clay Wyatt Bobby

Absent/Reason: Leonard (050) Troy (053)

TASKS PERFORMED

Coal Handling: Rom to ST1

Push to Washplant
Push ST5

Train Loading :

Train ID & Customer	Loaded from	Delays/Concerns

Facilities Cleaning: _____

Projects Complete: Haul Trash, shop inspection

TURNOVER INFORMATION

Equipment Status: fueled DZ 8

Train Information :

Train ID & Customer	Current Location	Projected Arrival Time/Other

Projects in Progress: P5 scale speed sensor fell out. (repaired)

Trouble shot P-4

Downtime Projects: cleaned spill on sizing screen deck (screen blinded over)

cleaned out 5th trap at bottom of silos

Other Information: Brought 4 swamp mats up for excavators on ST 2

SURFACE OPERATIONS SHIFT REPORT

DATE: 6 / 5 / 23

SHIFT: GRAVE DAY SWING WKND

SUPERVISOR: Jim

Operators Present: Curt Leno Travis

Prep Plant Operator: camden Mario sath

Absent/Reason: Jim

TASKS PERFORMED

Coal Handling: push to plant / push ST5
Rom to ST1

Train Loading :

Train ID & Customer	Loaded from	Delays/Concerns

Facilities Cleaning:

Projects Complete: done dailys in Sly gulch / pumped sewer tank at plant

TURNOVER INFORMATION

Equipment Status: repair elect. problem on LD2
State Fire done pms on CL, ST1, Plant Feed, THO
Repair Sizing Screen South weights

Train Information :

Train ID & Customer	Current Location	Projected Arrival Time/Other

Projects in Progress: Shuttle peoples / water roads
clean ditch north side of RPE

Downtime Projects:

Other Information:

SURFACE OPERATIONS SHIFT REPORT

DATE: 6 / 6 / 23

SHIFT: GRAVE DAY SWING WKND

SUPERVISOR: R. Polson

Operators Present: Pete, Ernie, Dan, Butch, Travis, Mathevv

Prep Plant Operator: Mike, Nathan

Absent/Reason: John (050), Justin (056)

TASKS PERFORMED

Coal Handling: Push to plant, Push away on ST 5 & ST 4. Push away on ST 1
Hauled Gab.

Train Loading :

Train ID & Customer	Loaded from	Delays/Concerns

Facilities Cleaning: _____

Projects Complete: Fueled the lube truck. Trash run. shop inspection.

TURNOVER INFORMATION

Equipment Status: LD3 - The brake is dragging.

Train Information :

Train ID & Customer	Current Location	Projected Arrival Time/Other

Projects in Progress: shuttle people, water roads, worked on permis.

Downtime Projects: _____

Other Information: Jim S. stayed over to clean ditch on north side of RPE.

SURFACE OPERATIONS SHIFT REPORT

DATE: 6 / 11 / 23

SHIFT: GRAVE DAY SWING WKND

SUPERVISOR: Ed

Operators Present: Leonard, Troy, Scott, Doug, Ian, Josh

Prep Plant Operator: Clay, Wyatt, Bobby

Absent/Reason: _____

TASKS PERFORMED

Coal Handling: ROM Idle Push to Washplant
Push ST4 & ST5

Train Loading:

Train ID & Customer	Loaded from	Delays/Concerns

Facilities Cleaning: Washed R-5, cleaned around dozer Feeder

Projects Complete: 5/4 gulch daily & weeklys

TURNOVER INFORMATION

Equipment Status: fueled DZ 8, DZ 7, fueled UE 10

Train Information:

Train ID & Customer	Current Location	Projected Arrival Time/Other

Projects in Progress: Water roads, cleared Road around South side of ROM Pile
Washed Vans, Shuttle drivers

Downtime Projects: _____

Other Information: _____

SURFACE OPERATIONS SHIFT REPORT

DATE: 6 / 15 / 23

SHIFT: GRAVE DAY SWING WKND

SUPERVISOR: Jim

Operators Present: Curt Travis Jim Leno

Prep Plant Operator: Mario Seth

Absent/Reason: Camden

TASKS PERFORMED

Coal Handling: Rem to ST1 / push to plant
push ST5

Train Loading :

Train ID & Customer	Loaded from	Delays/Concerns

Facilities Cleaning:

Projects Complete: done daily's in Sly gulch

TURNOVER INFORMATION

Equipment Status: Phillips working on DZ9, DZ5

Train Information :

Train ID & Customer	Current Location	Projected Arrival Time/Other

Projects in Progress: Shuttle people / water roads

Downtime Projects: Clean water drainage around north side of RPE

Other Information:

SURFACE OPERATIONS SHIFT REPORT

DATE: 6 / 17 / 23

SHIFT: GRAVE DAY SWING WKND

SUPERVISOR: J Clawson

Operators Present: Pete Rodger Butch Travis Justin

Prep Plant Operator: Mike Nathan Mathew

Absent/Reason: Ernie 050 Dan 053

TASKS PERFORMED

Coal Handling: Push to Prep Plant Push up Fines St3
Push away St4 and St5

Train Loading :

Train ID & Customer	Loaded from	Delays/Concerns

Facilities Cleaning: Clean up St5 Roadway and Ditch South Side
Projects Complete: Sly Dailys Water Roads

TURNOVER INFORMATION

Equipment Status: Engine Work on D25

Train Information :

Train ID & Customer	Current Location	Projected Arrival Time/Other

Projects in Progress: Permiss, Clean up Ground level

Downtime Projects: Grease Feeder + Sizer and TCL, Plant Feed

Other Information: Unload Quick lime New Battery RPE Pump

Air leak AC 14

SURFACE OPERATIONS SHIFT REPORT

DATE: 6 / 18 / 23

SHIFT: GRAVE DAY SWING WKND

SUPERVISOR: J Clawson

Operators Present: Pete Butch Rodger Travis Mathew Justin

Prep Plant Operator: Mike Nathan

Absent/Reason: Ernie 050 Dan 053

TASKS PERFORMED

Coal Handling: Push to Prep Plant Push up Fines St3 and St5
Push away St1

Train Loading :

Train ID & Customer	Loaded from	Delays/Concerns

Facilities Cleaning: Wash all Shuttle Vans Wash Surface Trucks
Projects Complete: Grease TLO Belt Change Crusher Belts TLO
Sly Weeklys Fan Checks

TURNOVER INFORMATION

Equipment Status: D25 engine test Run Back on 6-19 to Finish

Train Information :

Train ID & Customer	Current Location	Projected Arrival Time/Other

Projects in Progress: Water Roads Permiss

Downtime Projects: Haul Spoil from Ditch Cleaning to Back Road

Other Information: New Stop Signs @ Main Shop intersection and Sly intersection

SURFACE OPERATIONS SHIFT REPORT

DATE: 6 / 19 / 23 SHIFT: GRAVE DAY SWING WKND SUPERVISOR: Jim

Operators Present: Jim Travis Leno

Prep Plant Operator: Mario Seth

Absent/Reason: Camden (Voc) Curt (OSS)

TASKS PERFORMED

Coal Handling: push to plant / push st4/5
load train

Train Loading :

Train ID & Customer	Loaded from	Delays/Concerns
<u>calpri 8</u>	<u>516-60 517-30</u>	<u>10523 3:05</u>

Facilities Cleaning: Finish ditch cleaning / haul ditch cleaning
to lower road and spread / hauled trash

TURNOVER INFORMATION

Equipment Status: change R/R tires on UT21

Train Information :

Train ID & Customer	Current Location	Projected Arrival Time/Other*

Projects in Progress: shuttle people / water roads

Downtime Projects: _____

Other Information: _____

SURFACE OPERATIONS SHIFT REPORT

DATE: 6 / 22 / 23

SHIFT: GRAVE DAY SWING WKND

SUPERVISOR: Jim

Operators Present: Curt Jim Travis

Prep Plant Operator: Mario Seth

Absent/Reason: Camden (Vac) Leno (OS3)

TASKS PERFORMED

Coal Handling: Rem to STL / push to plant
push STL

Train Loading :

Train ID & Customer	Loaded from	Delays/Concerns

Facilities Cleaning: _____

Projects Complete: _____

TURNOVER INFORMATION

Equipment Status: Wash UE13

Train Information :

Train ID & Customer	Current Location	Projected Arrival Time/Other

Projects in Progress: Work on per miss

Downtime Projects: Clean on ditch by gab bin and rocks out of backroad
Shut river pump off at 1100 pm

Other Information: _____

SURFACE OPERATIONS SHIFT REPORT

DATE: 06 / 29 / 23

SHIFT: GRAVE DAY SWING WKND

SUPERVISOR: JClawson

Operators Present: Pete Rodger Dan

Prep Plant Operator: Mike Nathan Travis

Absent/Reason: _____

TASKS PERFORMED

Coal Handling: Push Away St5, Push to Prep Plant,
Push Fines St3 Push Coal St2 toward St1
Push to Train

Train Loading :

Train ID & Customer	Loaded from	Delays/Concerns

Facilities Cleaning: _____

Projects Complete: Daily Sly Gulch

TURNOVER INFORMATION

Equipment Status: _____

Train Information :

Train ID & Customer	Current Location	Projected Arrival Time/Other

Projects in Progress: Permiss Water Roads

Downtime Projects: change Rollers CI Belt

Other Information: Need to Clean Ditch South Side St5

SURFACE OPERATIONS SHIFT REPORT

DATE: 6 / 30 / 23

SHIFT: GRAVE DAY SWING WKND

SUPERVISOR: Tan

Operators Present: Colin, Dale, Levy, Adam, Tyler, Shawn, Josh

Prep Plant Operator: Allen, AJ, Bobby

Absent/Reason: _____

TASKS PERFORMED

Coal Handling: Push to plant, Push to train, Push quarry fines, Separation fines & stl coal

Train Loading :

Train ID & Customer	Loaded from	Delays/Concerns
<u>0x62831</u>	<u>ST4 88 cars 9,000 tons</u>	

Facilities Cleaning: Cleaned TLD After train, Cleaning South road

Projects Complete: Repaired AntiFreeze leak on DZ-5, filled tube truck gut-7

Trash run, Shop inspection, Changed top frame and rollers ST-1, P-35 Replaced headlight and inner fender wall, Changed Deck bed on feeder 4 on R1, Watered Roads, Deer Creek weekly

TURNOVER INFORMATION

Equipment Status: ~~2~~ Sueded Dozers

Train Information :

Train ID & Customer	Current Location	Projected Arrival Time/Other

Projects in Progress: Permiss, Ball Joints on P-24

Downtime Projects: _____

Other Information: Ordered part's for BL-22

SURFACE OPERATIONS SHIFT REPORT

DATE: 7 / 4 / 23

SHIFT: GRAVE DAY ~~SWING~~ WKND

SUPERVISOR: Lee

Operators Present: Levy, Dale, Tyler, Adam

Prep Plant Operator: Allan, Shawn

Absent/Reason: Colin S3 AJ-No call No show

TASKS PERFORMED

Coal Handling: Push to plant, push away fines

Train Loading :

Train ID & Customer	Loaded from	Delays/Concerns

Facilities Cleaning:

Projects Complete: Sly Gulch Dailies, Deer Creek weekly, Enviro Dailies
Wetmore's Road 5, Cleaned up South Road STA/5, Cleaned ground Doser Feeder

TURNOVER INFORMATION

Equipment Status:

Train Information :

Train ID & Customer	Current Location	Projected Arrival Time/Other

Projects in Progress: Haul Gab, Permiss

Downtime Projects:

Other Information:

SURFACE OPERATIONS SHIFT REPORT

DATE: 7 / 8 / 23

SHIFT: GRAVE DAY SWING WKND

SUPERVISOR: Ed

Operators Present: Leonard Troy Ian Doug Josh

Prep Plant Operator: Clay Scott Bobby

Absent/Reason: Wyatt Oso

TASKS PERFORMED

Coal Handling: Rdm Idle (emptied bunker) 8:00 AM Push to Washplant
Push ST5

Train Loading :

Train ID & Customer	Loaded from	Delays/Concerns

Facilities Cleaning: Cleared roadway North Side of Rdm pile

Projects Complete: Six gulch daily & weeklys

TURNOVER INFORMATION

Equipment Status: Fueled DZ 8, DZ 7, DZ 9

Train Information :

Train ID & Customer	Current Location	Projected Arrival Time/Other

Projects in Progress: monitor + dug out hot spots on ST.3 fines pile
Brought dumpster from Deepwell Bldg to Washplant for old Belt Press Teardown

Downtime Projects: Cleaned road around ST.5

Other Information: Took plywood from concrete project to 3 sided Bldg.

SURFACE OPERATIONS SHIFT REPORT

DATE: 7 / 10 / 23

SHIFT: GRAVE ~~SAY~~ SWING WKND

SUPERVISOR: Ed

Operators Present: Leonard Scott Troy Doag Jash

Prep Plant Operator: Clay Ian Bobby

Absent/Reason: Wyatt (650)

TASKS PERFORMED

Coal Handling: Rom Idle

Push to separate ST2+ST3
Push to Train

Train Loading :

Train ID & Customer	Loaded from	Delays/Concerns

Facilities Cleaning: _____

Projects Complete: SLY gulch dailys Water duties

TURNOVER INFORMATION

Equipment Status: repairs to BC 22 (done) fueled DZ 8

Train Information :

Train ID & Customer	Current Location	Projected Arrival Time/Other

Projects in Progress: Cutting metal at washplant, cleaned ditch southside of ROM pile, southside of ST-5, Water roads

Downtime Projects: _____

Other Information: _____

SURFACE OPERATIONS SHIFT REPORT

DATE: 7 / 11 / 23

SHIFT: GRAVE DAY SWING WKND

SUPERVISOR: JanOperators Present: Dale, Levy, Tyler, AdamPrep Plant Operator: Allen, AJ, ShawnAbsent/Reason: Cold 50

TASKS PERFORMED

Coal Handling: Push to train, push to plant, separation between 3 and 1

Train Loading :

Train ID & Customer	Loaded from	Delays/Concerns

Facilities Cleaning: _____

Projects Complete: Trash run shop inspection, cleaned road south of 4
Filled lube truck

TURNOVER INFORMATION

Equipment Status: _____

Train Information :

Train ID & Customer	Current Location	Projected Arrival Time/Other

Projects in Progress: Hauling Gub, Electrical permiss, watered roads

Downtime Projects: _____

Other Information: _____

SURFACE OPERATIONS SHIFT REPORT

DATE: 7 / 26 / 23

SHIFT: GRAVE DAY SWING WKND

SUPERVISOR: Ed

Operators Present: Leonard, Scott, Doug, Josh, Ian

Prep Plant Operator: Clay Wyatt Bobby

Absent/Reason: Troy (050)

TASKS PERFORMED

Coal Handling: ROM Idle Pushed road up fines pile on ST5

Train Loading :

Train ID & Customer	Loaded from	Delays/Concerns

Facilities Cleaning: Cleaned around dozer feeder & Back wall
 Projects Complete: haul trash, shop inspection

TURNOVER INFORMATION

Equipment Status: fueled DZ8, UES

Train Information :

Train ID & Customer	Current Location	Projected Arrival Time/Other

Projects in Progress: Cleaning ditch around Southside of ST5
replace Fork bar on LD-2

Downtime Projects: Wash plant projects

Other Information: Battery charger on ut 20 (clone) parked on Lineup

SURFACE OPERATIONS SHIFT REPORT

DATE: 8 / 10 / 23

SHIFT: GRAVE DAY SWING WKND

SUPERVISOR: Jan

Operators Present: Colth, Tyler, Dale, Levy

Prep Plant Operator: Allen, AJ, Shawn

Absent/Reason: Adam 50 / onite 53

TASKS PERFORMED

Coal Handling: Push to plant, Push away st4

Train Loading :

Train ID & Customer	Loaded from	Delays/Concerns

Facilities Cleaning:

Projects Complete: Trash Run, Shop inspection, Change 14 panels on clean coal Screen Bottom deck, Change plant feed Primary scraper, Add scraper on coarse coal Belt

TURNOVER INFORMATION

Equipment Status: _____

Train Information :

Train ID & Customer	Current Location	Projected Arrival Time/Other

Projects in Progress: Worked Hot spots, Boom main Road

Downtime Projects: _____

Other Information: _____

SURFACE OPERATIONS SHIFT REPORT

DATE: 8 / 11 / 23

SHIFT: ~~GRAVE~~ DAY SWING WKND

SUPERVISOR: Ed

Operators Present: Leonard Scott Troy Doug Ian

Prep Plant Operator: Clay Wyatt Bobby

Absent/Reason: Josh (053)

TASKS PERFORMED

Coal Handling: ROM Idle

Push to Washplant
Push to Train

Train Loading :

Train ID & Customer	Loaded from	Delays/Concerns

Facilities Cleaning: Cleaned TLO After train

Projects Complete: Haul trash, shop inspection

TURNOVER INFORMATION

Equipment Status: refilled UT-18, fueled DZ 7, DZ5, DZ9

Train Information :

Train ID & Customer	Current Location	Projected Arrival Time/Other

Projects in Progress: SWEEP sides of Road from gate to parking lot

Downtime Projects: Took Air Compressor cooler to Nigen Bldg (North side by small Generator)

Other Information: _____

SURFACE OPERATIONS SHIFT REPORT

DATE: 8 / 15 / 23

SHIFT: GRAVE DAY SWING WKND

SUPERVISOR: Jim

Operators Present: curt Jim Travis Leno Seth

Prep Plant Operator: camden Mario Craig Brandon

Absent/Reason: _____

TASKS PERFORMED

Coal Handling: push to plant / push ST 4/5
load train

Train Loading :

Train ID & Customer	Loaded from	Delays/Concerns
<u>Calpri 9</u>	<u>516-50 517-46</u>	<u>10768 3:31</u>

Facilities Cleaning: _____

Projects Complete: Fueled lube truck / spray hot spots
hauled trash

TURNOVER INFORMATION

Equipment Status: repair lights on UT21 / repair tank neck on
DZ7 Radiator / Fix light on DZ9

Train Information :

Train ID & Customer	Current Location	Projected Arrival Time/Other

Projects in Progress: water roads

Downtime Projects: bladed road down to RPE pond

Other Information: _____

SURFACE OPERATIONS SHIFT REPORT

DATE: 8 / 17 / 23

SHIFT: GRAVE DAY SWING WKND

SUPERVISOR: Eal

Operators Present: Scott, Troy, Josh, Wyatt, Doug

Prep Plant Operator: Clay, Ian Bobby

Absent/Reason: Leonard (OS3)

TASKS PERFORMED

Coal Handling: ROM to ST1 Push to Washplant
Push ST4, ST5

Train Loading :

Train ID & Customer	Loaded from	Delays/Concerns

Facilities Cleaning: Shoveled up Piles in R-5

Projects Complete: 517 gulch dailys

TURNOVER INFORMATION

Equipment Status: fueled DZ7, DZ5

Train Information :

Train ID & Customer	Current Location	Projected Arrival Time/Other

Projects in Progress: Bladed in front of ug shop; got drainage around
Northside of ST5 open; Water roads

Downtime Projects: repaired guarding on TC-1 head (Southside)

Other Information: dug out hot spots on ST5 + ST3

SURFACE OPERATIONS SHIFT REPORT

DATE: 8 / 20 / 23

SHIFT: GRAVE ~~DAY~~ SWING WKND

SUPERVISOR: Tan

Operators Present: Colem, Dale, Law, Tyler, Adams, Shalwa

Prep Plant Operator: Allen, AJ

Absent/Reason: Lennie GO

TASKS PERFORMED

Coal Handling: Push to plant, Pushaway St 4 & 5, Push up fines St 3

Train Loading :

Train ID & Customer	Loaded from	Delays/Concerns

Facilities Cleaning: ST-1 Head house

Projects Complete: Sly Gulch Dailies 3 weekly, watered Roads, worked on shift 1 transformer present, repaired Trans leak on D2-B

TURNOVER INFORMATION

Equipment Status: _____

Train Information :

Train ID & Customer	Current Location	Projected Arrival Time/Other

Projects in Progress: Electrical Permiss, Started spraying St 1 structure off
setting up for coarse coal Belt changeout, **Package stg**, working on hot spots

Downtime Projects: _____

Other Information: _____

D & S UNDERGROUND, INC
9950 3200 ROAD
HOTCHKISS, CO 81419

Invoice

Date 7/13/2023
Invoice # 829

Bill To

Mountain Coal Company
c/o West Elk Mine
P.O. Box 591
5174 Highway 133
Somerset, CO. 81434

Ship To

P.O. # WEHRHJ
Terms Net 30

Ship Date 7/13/2023
Due Date 8/12/2023
Other

Item	Description	Qty	Price	Amount
WORK	WORK PERFORMED UNDER CONTRACT FOR GOB PILE ASSIST, ROAD PREP FOR MAG CHLORIDE AND CLEANING DITCH 6/26/23 THROUGH 6/27/23		0.00	0.00
290 EXCAVA...	6/26/23 OPERATING	11.5	250.00	2,875.00
OPERATOR	6/26/23 MINE HAUL TRUCK	11.5	65.00	747.50
DUMP TRUCK	6/26/23 HAULING MATERIAL	9.5	135.00	1,282.50
WATER TRU...	6/26/23 WATER TRUCK OPERATING	2	145.00	290.00
EXCAVATOR	6/26/23 OPERATING 160LX	9.5	200.00	1,900.00
BLADE	6/26/23 BLADE OPERATING	2	150.00	300.00
290 EXCAVA...	6/27/23 OPERATING	11.5	250.00	2,875.00
OPERATOR	6/27/23 MINE HAUL TRUCK	11.5	65.00	747.50
DUMP TRUCK	6/27/23 HAULING MATERIAL	1	135.00	135.00
WATER TRU...	6/27/23 WATER TRUCK OPERATING	6	145.00	870.00
OPERATOR	6/27/23 RANDY RUNNING MINE ROLLER	6	65.00	390.00
BLADE	6/27/23 BLADE OPERATING	1	150.00	150.00
Subtotal				\$12,562.50
Sales Tax (0.0%)				\$0.00
Total				\$12,562.50
Payments/Credits				\$0.00
Balance Due				\$12,562.50

D & S UNDERGROUND, INC
Spady@tds.net
970-872-6166
970-872-6160



Randy Spadafora

(970) 872-6166
Cell 209-1924

9950 3200 Rd.
Hotchkiss, CO

SERVICE CALL INFORMATION SHEET

TOTAL LABOR HOURS WORKED BY CONTRACTOR'S EMPLOYEE(S)

Date: 6-26- 6-27-23

Contractor's Name: D & S Underground Inc

P.O./Contract No. WEH/RHS

Description of work performed:

Bob pitz assist + road prep for mag chloride
Ditch cleaning

Actual Man Hours Worked by Contractor's Employees recorded below:

		Worked Hours		Travel Hours	
		Regular/OT		Regular/OT	
Employee Names:					
6/26	Nick 290	11 1/2	1	1	
	Nicolas Operator Haul Truck	11 1/2	1	1	
	Porter Dump Truck	19 1/2	1	1	
	Water Truck	12	1	1	
	Randy 160	19 1/2	1	1	
	Blade	12	1	1	
6/27	Nick 290	11 1/2	1	1	
	Nicolas Operator	11 1/2	1	1	
	Porter Dump Truck	11	1	1	
	Water Truck	16	1	1	
	Randy Operator Roller	16	1	1	
	Blade	17	1	1	
		1	1	1	
Total Hours for Job		183	1	1	

Supervisor's Signature: _____

Date Signed: _____

D & S UNDERGROUND INC.

FREE ESTIMATES

Randy Spadafora

(970) 872-6166
Cell 209-1924

9950 3200 Rd.
Hotchkiss, CO

SERVICE CALL INFORMATION SHEET

TOTAL LABOR HOURS WORKED BY CONTRACTOR'S EMPLOYEE(S)

Date: 6-22 - 6-24

Contractor's Name: D&S Underground

P.O./Contract No. WEHRMS

Description of work performed:

Go to Pit Prep Rd's for Mag, Clean Ditches

Actual Man Hours Worked by Contractor's Employees recorded below:

Worked Hours		Travel Hours	
Regular	OT	Regular	OT

Employee Names:

6/22	Nick 290	11	1	1	1
	Nichols operator on Cat haul Truck	11	1	1	1
	Zack water Truck	11	1	1	1
	Randy Roller "operator"	14 1/2	1	1	1
6/23	Black	16 1/2	1	1	1
	Nick 290	17	1	1	1
	Zack operator haul Truck	17	1	1	1
	Porter Dump Truck	11	1	1	1
6/24	water Truck	16	1	1	1
	Randy Transport 160	15	1	1	1
		1	1	1	1
		1	1	1	1

Total Hours for Job 1 1 1 1

Supervisor's Signature: _____

Date Signed: _____