



STATE OF
COLORADO

Ridley - DNR, Hunter <hunter.ridley@state.co.us>

Inspection Report, Foidel Creek Mine, C-1982-056

1 message

Ridley - DNR, Hunter <hunter.ridley@state.co.us>

Thu, Jul 27, 2023 at 12:47
PM

To: "Kawcak, Miranda" <mkawcak@peabodyenergy.com>

Miranda,

Please find attached the Division's report for the July coal partial inspection of the Foidel Creek Mine. Let me know if you have any questions.

Kind regards,
Hunter Ridley
Environmental Protection Specialist



COLORADO
Division of Reclamation,
Mining and Safety
Department of Natural Resources

P 720.868.7757 | F 303.832.8106

Physical: 1313 Sherman Street, Room 215, Denver, CO 80203

Mailing: DRMS Room 215, 1001 E 62nd Ave, Denver, CO 80216

hunter.ridley@state.co.us | <https://drms.colorado.gov>



Foidel_July_CP.pdf


4516K



PERMIT INFORMATION

Permit Number: C-1982-056 Mine Name: Foidel Creek Mine Operator: Twentymile Coal, LLC Operator Address: Ms Miranda Kawcak 29515 Routt County Road No. 27 Oak Creek, CO 80467	County: Routt Operation Type: Underground Permit Status: Active Ownership: Private
	Operator Representative Present: Miranda Kawcak
Operator Representative Signature: (Field Issuance Only) Miranda Kawcak, Kevin Copeland	

INSPECTION INFORMATION

Inspection Start Date: July 18, 2023 Inspection Start Time: 11:30 Inspection End Date: July 18, 2023 Inspection End Time: 14:00		Inspection Type: Coal Partial Inspection Inspection Reason: Normal I&E Program Weather: Clear	
Joint Inspection Agency:		Joint Inspection Contacts:	
Post Inspection Agency: None		Post Inspection Contacts:	
Inspector(s): Hunter Ridley	Inspector's Signature: 		Signature Date: July 27, 2023

Inspection Topic Summary

NOTE: Y=Inspected N=Not Inspected R=Comments Noted V=Violation Issued NA=Not Applicable

N - Air Resource Protection

N - Availability of Records

Y - Backfill & Grading

R - Excess Spoil and Dev. Waste

N - Explosives

R - Fish & Wildlife

R - Hydrologic Balance

R - Gen. Compliance With Mine Plan

N - Other

N - Processing Waste

R - Roads

R - Reclamation Success

R - Revegetation

N - Subsidence

N - Slides and Other Damage

N - Support Facilities On-site

R - Signs and Markers

N - Support Facilities Not On-site

N - Special Categories Of Mining

R - Topsoil

COMMENTS

This was a partial inspection of the Foidel Creek Mine; DRMS Permit No. C-1982-056, operated by Twentymile Coal, LLC. (TC). This inspection was conducted by Hunter Ridley with the Colorado Division of Reclamation, Mining, and Safety (Division). Kevin Copeland of TC accompanied an initial portion of the inspection and Miranda Kawcak of TC accompanied the rest. **Please address the Bold items below.**

MR322 was issued by the Division on 10/25/2022 and approved the relocation of an internal road. The construction of this new road has begun in the 6MN area (Photo 21). RN-08 is currently in progress with the Division and has been extended to a decision date of **July 28, 2023.**

SIGNS AND MARKERS—Rule 4.02

Mine identification markers were observed throughout the site (Photo 1). All information for compliance was present.

ROADS – Rule 4.03 Construction 4.03.1(3)/4.03.2(3), Drainage 4.03.1(4)/4.03.2(4), Surfacing and Maintenance 4.03.1(5) and (6)/4.03.2(5) and (6), Reclamation 4.03.1(7)/4.03.2(7):

Water trucks were seen running in the main facilities area. Haul roads across the site are well maintained (Photo 13). The Operator noted that the submittal of an MR to create a new internal haul road in this area, as discussed in last month's inspection report, was still a possibility this season. This new road would extend from the foot of Pond D up to the refuse pile, connecting with the refuse pile haul road currently in place and creating a loop.

HYDROLOGIC BALANCE - Rule 4.05

Drainage Control 4.05.1, 4.05.2, 4.05.3; Siltation Structures 4.05.5, 4.05.6; Discharge Structures 4.05.7, 4.05.10; Diversions 4.05.4; Effluent Limits 4.05.2; Ground Water Monitoring 4.05.13; Surface Water Monitoring 4.05.13; Drainage – Acid and Toxic Materials 4.05.8; Impoundments 4.05.6, 4.05.9; Stream Buffer Zones 4.05.18:

Number of Partial Inspection this Fiscal Year: 1

Number of Complete Inspections this Fiscal Year: 0

Main facilities ponds were checked for discharge and culverts were inspected for function. Most culverts appear to be functioning, but some are in need of cleanout (Photos 8 and 17). Continue to clean out culverts when vegetation and sediment hinders function.

Main Facilities Area

The stoker coal loadout facility has not yet been sealed following a note made in a DRMS inspection report last Fall which pointed out that this wash plant facility was leaking water behind the building (Photos 4 and 5). The building was scheduled for sealing in the spring of this year. The Operator stated that a contractor had recently come to view the project. **Please supply the Division with a firm date of construction completion when one becomes available.** In the meantime, the Operator has been using straw bales and three ditches (Photo 6) behind the building to protect Foidel Creek from drainage and sediment from this facility. After sealing the building, water will continue to report to Pond E through a pump system to be installed behind the stoker loadout building and through the existing building pipe (Photo 7). A few small coal spills were noted around the stoker loadout area. Personnel were actively cleaning up these spills at the time of inspection.

All ponds across the site are scheduled for cleanup in July of this year. Several ponds around the main facilities area will need to be included in this annual cleaning to maintain proper function (Photos 2 and 12).

Berms near the train loadout facility main are well maintained to prevent runoff to nearby Foidel Creek. Buffer zone signs are also in place here (Photos 9 and 10).

Fish Creek Borehole

Fish Creek borehole is a water treatment borehole which sits atop one of Foidel's underground reservoirs. Water travels up from the reservoir, through three retention ponds, and through a rock creek (Photo 19) where it is sampled. Water from this sample point eventually discharges to Foidel Creek. It is pumped very infrequently and has not been pumped at all this year as the water quality discharged from this point is of low quality due to high amounts of iron. The Operator stated that an updated system would need to be in place in this area before water is discharged regularly.

Fish Creek Tipple Area

The Fish Creek Tipple Area used to be a train loadout facility. Tracks have been removed and all that remains is the Tipple pond (Photo 22). Water remains in this pond year round. This area is Phase 1 released and has become eligible for Phase 3 release this year after crossing the 10 year period.

TOPSOIL – Rule 4.06

Topsoil piles around the main facilities, Fish Creek borehole, and Tipple area were checked for proper vegetation, stability, and appropriate markers. All piles are properly vegetated and free of disturbance (Photo 3).

EXCESS SPOIL AND DEV. WASTE – Rule 4.09 Placement; Drainage Control; Surface Stabilization:

Compaction of refuse material piled throughout the winter continues throughout the summer season. A drag bar is connected to a dozer and is used as the primary compaction tool for this refuse pile. Drainage is functioning properly in this area with no standing water atop the pit. The third lift is still under construction. The second lift is

Number of Partial Inspection this Fiscal Year: 1

Number of Complete Inspections this Fiscal Year: 0

complete and will be seeded in the current season (Photo 14). Clay overburden material will be taken from the southern portion of the refuse area to cover the pile before adding topsoil from the nearby stockpile to the northeast. Eventually, this refuse face will be built up to meet the ridge of the adjacent, older refuse pile (Photo 15).

Compaction reports are conducted quarterly. As per the last inspection request (dated April 25, 2023), the Division received the most recent compaction report (1st Q 2023) and the compaction report prior to that (4th Q 2022). These were received May 10, 2023. Before this submittal, the last noted compaction report received by the Division was for the 4th Quarter 2016. **In order to complete the public record, please submit all missing compaction reports through e-permitting from 1st Quarter 2017 to 3rd Quarter 2022 to the Division and continue to submit these reports on a timely basis.**

RECLAMATION SUCCESS and REVEGETATION - Rule 4.15, Rule 3:

The 13 Left Outby Gate Road Utility Borehole has been fully prepped for reclamation and is set to be seeded this fall (Photo 20). A two-track road which was present before mining operations will remain in this area after reclamation to provide access to a nearby ditch.

Evidence of weed spraying was seen in the main facilities area and other outlying borehole locations.

Continue to maintain fences and cattle guards during summer months to keep cattle from disturbing topsoil piles and other sensitive areas throughout the site.

PROTECTION OF FISH, WILDLIFE, AND RELATED ENVIRONMENTAL VALUES – Rule 4.18:

Various water fowl were in consistent use of many of the ponds around the main facilities area.

GENERAL MINE PLAN COMPLIANCE:

Ongoing Maintenance Items:

- Protect topsoil piles from cattle
- Spray weeds and Reseed the waste pile topsoil pile
- Seal support building near Wash Plant (2023)

ENFORCEMENT ACTIONS/COMPLIANCE

No enforcement actions were initiated as a result of this inspection, nor are any pending.

Number of Partial Inspection this Fiscal Year: 1

Number of Complete Inspections this Fiscal Year: 0

PHOTOGRAPHS



Photo 1: Mine sign posted at the entrance road.



Photo 2: Pond E, due to be cleaned.

Number of Partial Inspection this Fiscal Year: 1

Number of Complete Inspections this Fiscal Year: 0



Photo 3: Topsoil pile is well vegetated and marked.

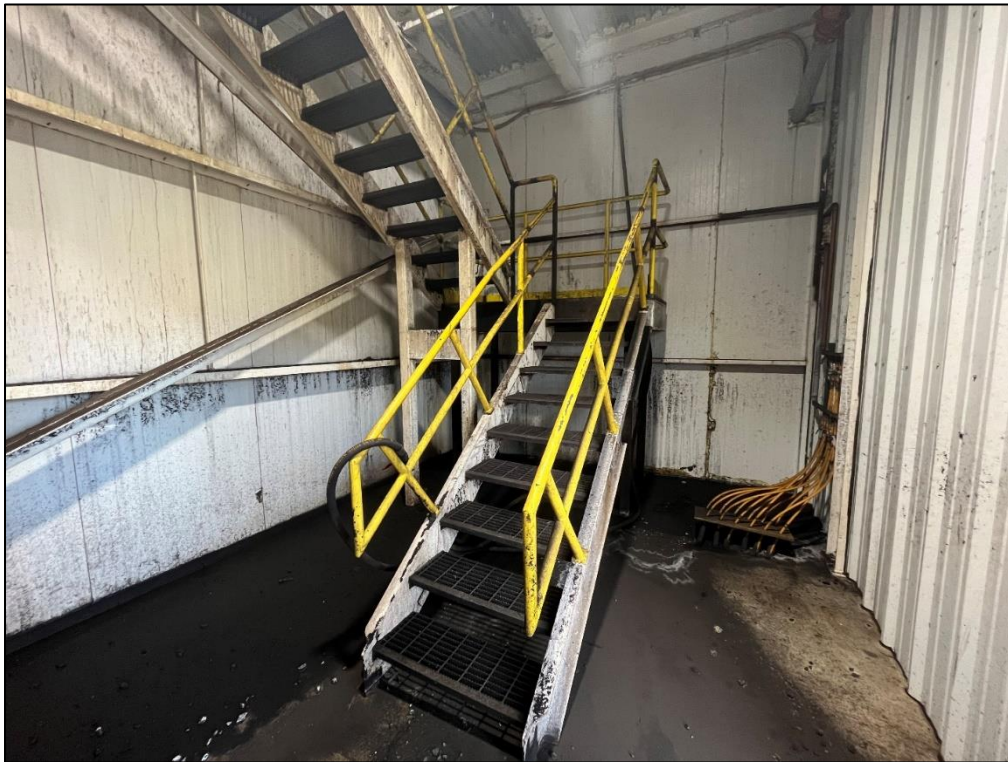


Photo 4: Inside of stocker coal loadout facility, due to be sealed.

Number of Partial Inspection this Fiscal Year: 1

Number of Complete Inspections this Fiscal Year: 0



Photo 5: Another view inside the stoker coal loadout wash plant to be sealed.



Photo 6: View of the back of the stoker coal loadout building, three ditches have been built to maintain water leakage while the building waits to be sealed.

Number of Partial Inspection this Fiscal Year: 1

Number of Complete Inspections this Fiscal Year: 0



Photo 7: The main supply of water from the stoker coal wash plant operation drains through this pipe into a sump building adjacent.



Photo 8: Culvert for Pond C, in need of cleanout.

Number of Partial Inspection this Fiscal Year: 1

Number of Complete Inspections this Fiscal Year: 0



Photo 9: View W of Foidel Creek near the train loadout.



Photo 10: The berm and buffer zone signs are in place at the train loadout facility.

Number of Partial Inspection this Fiscal Year: 1

Number of Complete Inspections this Fiscal Year: 0



Photo 11: East side of Pond D.



Photo 12: West side of Pond D.

Number of Partial Inspection this Fiscal Year: 1

Number of Complete Inspections this Fiscal Year: 0



Photo 13: Roads are well maintained and watered frequently for dust.



Photo 14: View West of the refuse pile, 2nd lift (shown) is compacted and ready to be seeded this season.

Number of Partial Inspection this Fiscal Year: 1

Number of Complete Inspections this Fiscal Year: 0



Photo 15: View South from the top of the refuse pile. Current lifts under construction in Photo 14 will eventually be built up to meet the ridge of the older, vegetated refuse pile pictured here.



Photo 16: Pond G, will likely be completely dry in the next few months.

Number of Partial Inspection this Fiscal Year: 1

Number of Complete Inspections this Fiscal Year: 0



Photo 17: Pond F, culverts to be cleared here.



Photo 18: Power system located at the Fish Creek Borehole treatment facility.

Number of Partial Inspection this Fiscal Year: 1

Number of Complete Inspections this Fiscal Year: 0



Photo 19: Rock creek which to water from the Fish Creek Borehole retention ponds drains. Fish Creek is just below its sampling location. Water from the Fish Creek Borehole is high in Iron.



Photo 20: The 13 Left Outby utility borehole has been completely reclaimed. It will be seeded in the fall.

Number of Partial Inspection this Fiscal Year: 1

Number of Complete Inspections this Fiscal Year: 0



Photo 21: Construction of the haul road approved under MR322 has begun.



Photo 22: The Fish Creek Tipple Area and pond are pictured. The pond holds water year round.

Number of Partial Inspection this Fiscal Year: 1

Number of Complete Inspections this Fiscal Year: 0