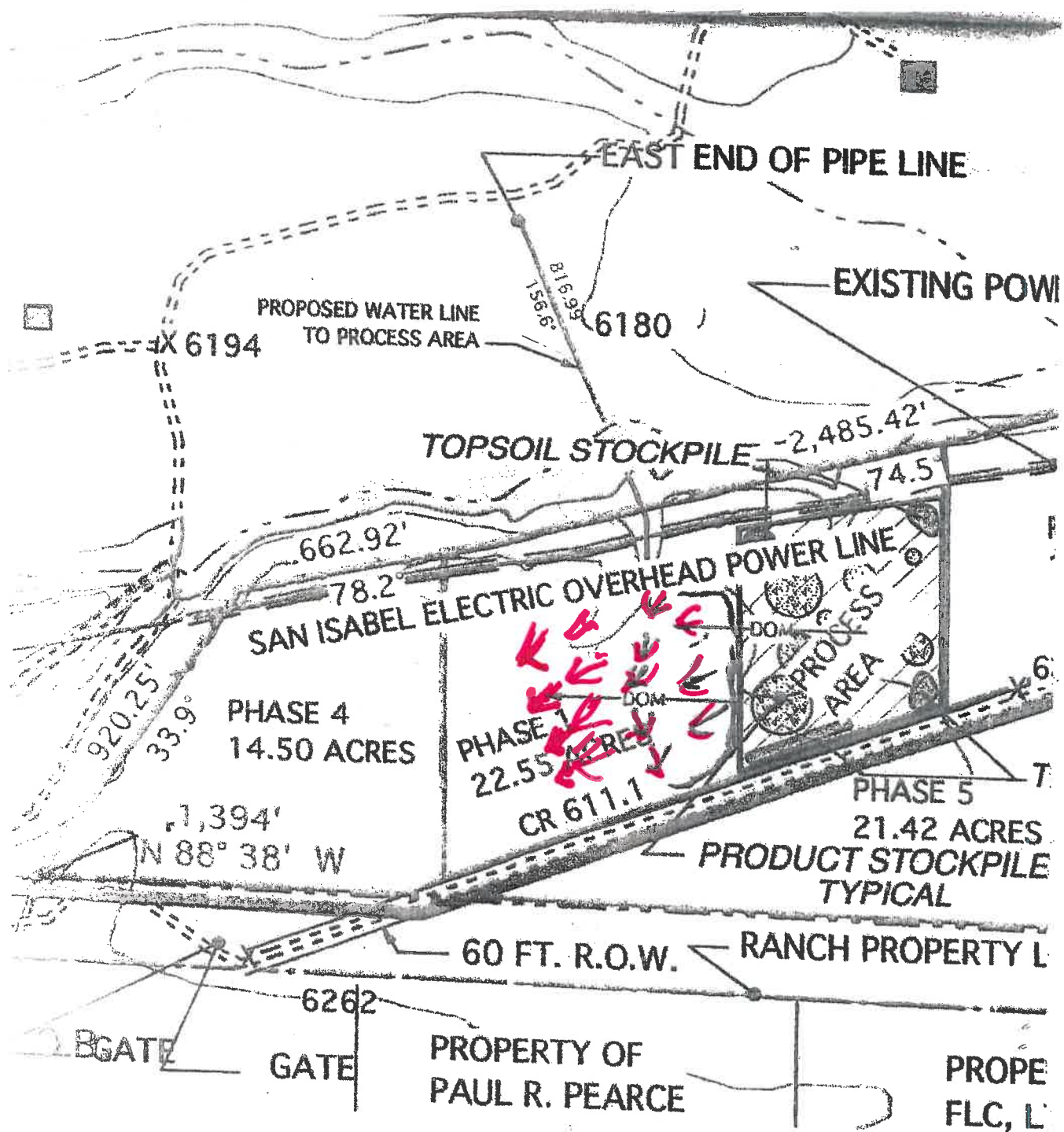


Disturbed Area
As Estimated

19 Acres

19



MAP LEGEND

112c PERMIT BOUNDARY

SAN ISABEL ELECTRIC POWERED LINES

Leone Huerfano Gravel Pit # M-2010-004 has been inspected by Leone Sand & Gravel, Wayne Leone and Frank Leone. It was also inspected by Patrick Lennberg on 6-24-2020 and all has been found to be satisfactory during the inspections.

Frank Leone, Manager

Leone Sand & Gravel LLC