




**MINERALS PROGRAM INSPECTION REPORT**  
**PHONE: (303) 866-3567**

The Division of Reclamation, Mining and Safety has conducted an inspection of the mining operation noted below. This report documents observations concerning compliance with the terms of the permit and applicable rules and regulations of the Mined Land Reclamation Board.

<b>MINE NAME:</b> Hartman Pit	<b>MINE/PROSPECTING ID#:</b> M-1997-087	<b>MINERAL:</b> Gravel	<b>COUNTY:</b> Pueblo
<b>INSPECTION TYPE:</b> Surety Release Inspection	<b>WEATHER:</b> Clear	<b>INSP. DATE:</b> June 29, 2023	<b>INSP. TIME:</b> 08:30
<b>OPERATOR:</b> Arnolds Custom Seeding, LLC	<b>OPERATOR REPRESENTATIVE:</b> Shawn Hesse	<b>TYPE OF OPERATION:</b> 112c - Construction Regular Operation	
<b>REASON FOR INSPECTION:</b> Surety Release Requested	<b>BOND CALCULATION TYPE:</b>	<b>BOND AMOUNT:</b> \$22,707.00	
<b>DATE OF COMPLAINT:</b> NA	<b>POST INSP. CONTACTS:</b> None	<b>JOINT INSP. AGENCY:</b> Colo. Land Board	
<b>INSPECTOR(S):</b> Amber Michels	<b>INSPECTOR'S SIGNATURE:</b> 	<b>SIGNATURE DATE:</b> July 21, 2023	

**GENERAL INSPECTION TOPICS**

This list identifies the environmental and permit parameters inspected and gives a categorical evaluation of each. No problems or possible violations were noted during the inspection. The mine operation was found to be in full compliance with Mineral Rules and Regulations of the Colorado Mined Land Reclamation Board for the Extraction of Construction Materials and/or for Hard Rock, Metal and Designated Mining Operations. Any person engaged in any mining operation shall notify the office of any failure or imminent failure, as soon as reasonably practicable after such person has knowledge of such condition or of any impoundment, embankment, or slope that poses a reasonable potential for danger to any persons or property or to the environment; or any environmental protection facility designed to contain or control chemicals or waste which are acid or toxic-forming, as identified in the permit.

(AR) RECORDS----- <u>N</u>	(FN) FINANCIAL WARRANTY----- <u>Y</u>	(RD) ROADS----- <u>N</u>
(HB) HYDROLOGIC BALANCE----- <u>N</u>	(BG) BACKFILL & GRADING----- <u>N</u>	(EX) EXPLOSIVES----- <u>N</u>
(PW) PROCESSING WASTE/TAILING---- <u>N</u>	(SF) PROCESSING FACILITIES----- <u>N</u>	(TS) TOPSOIL----- <u>N</u>
(MP) GENL MINE PLAN COMPLIANCE- <u>N</u>	(FW) FISH & WILDLIFE----- <u>N</u>	(RV) REVEGETATION---- <u>Y</u>
(SM) SIGNS AND MARKERS----- <u>Y</u>	(SP) STORM WATER MGT PLAN---- <u>N</u>	(RS) RECL PLAN/COMP-- <u>Y</u>
(ES) OVERBURDEN/DEV. WASTE----- <u>N</u>	(SC) EROSION/SEDIMENTATION-- <u>N</u>	(ST) STIPULATIONS----- <u>N</u>
(AT) ACID OR TOXIC MATERIALS----- <u>N</u>	(OD) OFF-SITE DAMAGE----- <u>N</u>	

Y = Inspected / N = Not inspected / NA = Not applicable to this operation / PB = Problem cited / PV = Possible violation cited

## **OBSERVATIONS**

The Hartman Pit was inspected by Amber Michels with the Division of Reclamation, Mining and Safety (Division/DRMS). The inspection was completed as part of a permit release request (SL-4), submitted in accordance with Rule 4.17, received by the Division on June 15, 2023. The site was previously inspected by the Division on November 2, 2021 as part of a permit release request (SL-3). Per Rule 4.17.2(1) the Division sent notice of the release request to the Pueblo County Commissioners, Pueblo Planning Director, the South Pueblo County Soil Conservation District and the landowners; the Colorado State Board of Land Commissioners (State Land Board) and Hartman Land and Cattle.

Accompanying me during the inspection was Shawn Hesse (Arnold's Custom Seeding) and Kelsey Singleton (H2 Enterprises and the soil scientist for Arnold's Custom Seeding) representing the Operator, and Ben Teschner representing the Colorado State Board of Land Commissioners. The weather was clear.

The Hartman Pit is a 112c operation that is permitted for 240 acres with 200 acres owned by the State of Colorado and is managed by the State Land Board, the remaining 40 acres is on private land and 89 acres have been identified as affected land. The site is located approximately 2.8 miles south of Vineland in Pueblo County and the entrance to the site along 36th Lane. The approved post-mining land use is rangeland and the land surrounding the pit is a mix of rangeland and agriculture.

### **Revegetation and Reclamation Success:**

The site entered final reclamation in 2013 when Arnold's Custom Seeding became the Permittee. The previous DRMS Inspection from November, 2021 noted that the Operator had difficulty establishing vegetation within a 19 acre portion of the site (see maps 1 and 2). This 19 acre area was re-seeded via drill-seeding in 2018, 2020, and 2022. During the previous inspection, the Operator had stated that the difficulty getting vegetation to establish is partially due to cattle grazing within the 19-acre area. At the time of the 2021 inspection, the State Land Board felt the areas outside the approximate 19 acre area were in good condition and did not require any further reclamation effort. This inspection focused on the 19 acre area outlined in the previous inspection.

During the 2021 inspection, the State Land Board had decided to allow the Operator to put up a temporary fence to keep cattle out of the area to aid in vegetation establishment. During the 2023 inspection, the Operator was asked if they had done this and they stated that they had not. On-site, both the Operator and Mr. Teschner stated that the site looked markedly better than when they were there for the previous inspection. All parties observed a variety of grasses growing on-site (see Figures 1 and 2), which the Operator and Mr. Teschner stated were not present during the 2021 inspection in this area. The annual weed, Kochia, was also prevalent throughout the site. While Kochia is not a state listed noxious weed, it is a weed common in the Pueblo area. Because this land will be reclaimed to rangeland, and cattle eat Kochia, it was agreed that its presence is acceptable.

Overall, this area still is not as heavily occupied by established vegetation as its surroundings, but it does represent a diverse mixture of vegetation. The south-west portion of the 19-acre area (Photos 14-21) contains a higher density of vegetation than the eastern portion (Photos 2-13), but the area on a whole shows a stark improvement over the past few years. The State Land Board and the Division are in agreement that the site has acceptable reclamation on a whole, and the Division will **approve** the Operator's Surety Release request.

**Signs and Markers:**

A mine sign was posted at the entrance to the site in compliance with Rule 3.1.12 (Photo 1: Map 1).

**Conclusion:**

This concludes the Division's Inspection Report; a few maps and figures displaying topics discussed during the inspection and a subset of corresponding photographs that were taken during the time of the inspection are included below. If you need additional information or have any questions, please contact me by email at [amber.michels@state.co.us](mailto:amber.michels@state.co.us) or by telephone at (720) 836-0967.

**Inspection Contact Address**

Shawn Hesse  
Arnolds Custom Seeding, LLC  
4626 County Rd 65  
Keenesburg, CO 80643

CC: Ben Teschner, Colorado State Board of Land Commissioners  
Kelsey Singleton, H2 Enterprises  
Jared Ebert, DRMS

## PHOTOGRAPHS



**Photo 1:** Looking north-west at the mine sign posted at the entrance to the site.



**Photo 2:** Looking west across the site from the eastern side of the 19-acre area.





**Photo 3:** Looking south-west across the site from the east side of the 19 acre area.



**Photo 4:** Looking west across a portion of the 19 acre area that had been bare during the previous inspection.



**Photo 5:** Looking north across a portion of the 19 acre area that had been bare during the previous inspection.



**Photo 6:** Looking east across a portion of the 19 acre area that had been bare during the previous inspection.





**Photo 7:** Standing on-top of a stockpile approved to remain, looking west across the site.



**Photo 8:** Standing on-top of a stockpile approved to remain, looking south-west across the site.



**Photo 9:** Standing on-top of a stockpile approved to remain, looking east across the site.



**Photo 10:** Standing on-top of a stockpile approved to remain, looking north-east across the site.





**Photo 11:** Standing on-top of a stockpile approved to remain, looking north across the site.



**Photo 12:** Looking north across an area in the north-west portion of the 19 acre site that was barren during the last inspection.





**Photo 13:** Ground level view of the location in Photo 12.



**Photo 14:** Looking west across the site from the south-west portion of the 19 acre area.





**Photo 15:** Looking north across the site from the south-west portion of the 19 acre area.



**Photo 16:** Looking north-east across the site from the south-west portion of the 19 acre area.





**Photo 17:** Looking east across the site from the south-west portion of the 19 acre area.



**Photo 18:** Looking east across the site from the south-west corner of the 19 acre area.



**Photo 19:** Looking north across the site from the south-west corner of the 19 acre area.



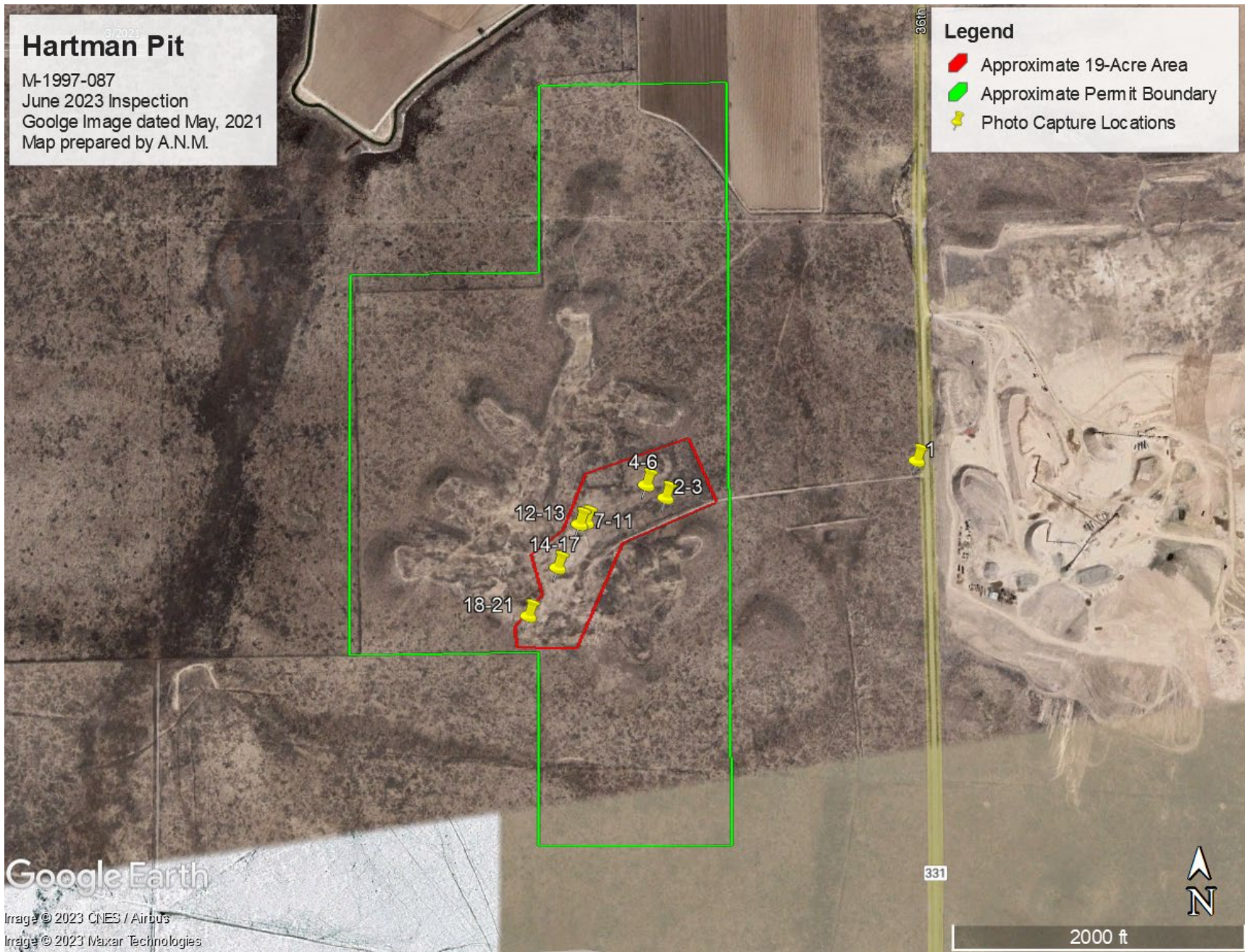
**Photo 20:** Looking north-west across the site from the south-west corner of the 19 acre area.





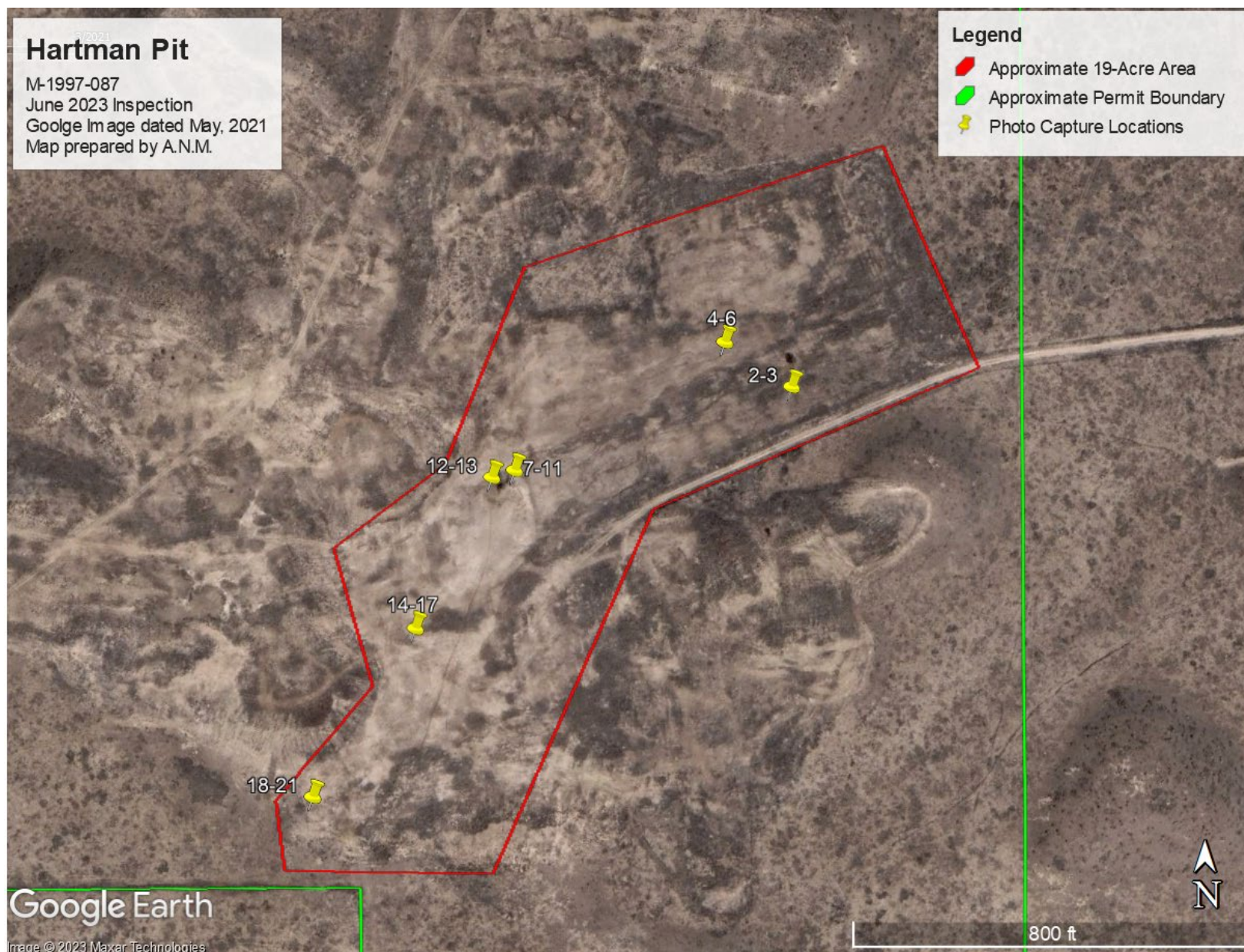
**Photo 21:** Looking west across the site from the south-west corner of the 19 acre area.





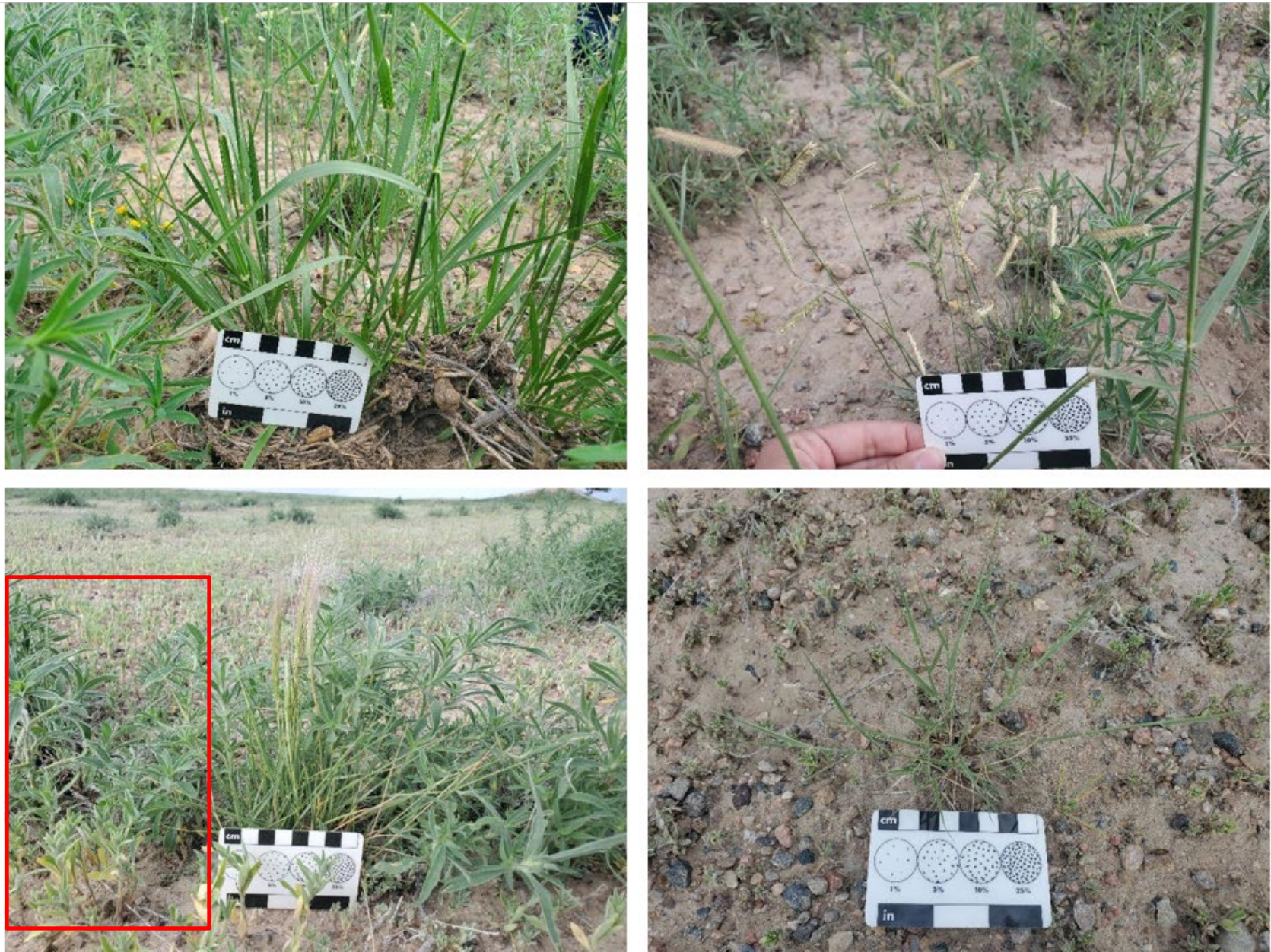
**Map 1:** Map generated in Google Earth Pro to display the entire permitted area. Photos taken during the inspection correlate with the yellow push-pins labeled 1-21.





**Map 2:** Map generated in Google Earth Pro to display a closer look at the 19-acre area that was not in a releasable state during the previous DRMS inspection conducted in 2021.





**Figure 1:** Various grasses observed onsite. Kochia also observed as a dominant species throughout the site (highlighted in red, but also present in the other photos as well).





Figure 2: Additional grasses observed on-site.