



L.G. EVERIST, INC.  
ROCK SOLID SINCE 1876

7321 E. 88TH AVENUE, SUITE 200  
HENDERSON, COLORADO 80640  
PHONE 303-287-9606 • FAX 303-289-1348

July 18, 2023

Mr. Eric Scott  
Environmental Protection Specialist  
Division of Reclamation, Mining and Safety  
1313 Sherman St., Room 215  
Denver, Colorado 80203

*Submitted via online DRMS e-Permitting*

**RE: Technical Revision Request for Reclamation Plan changes at  
Carbon Valley Resource, DRMS Permit M-2001-017**

Dear Eric:

L.G. Everist, Inc. respectfully requests a Technical Revision for minor changes to the Reclamation Plan of Carbon Valley Resource, DRMS Permit # M-2001-017. We have included the DRMS's form, *Request for Technical Revision (TR) Cover Sheet* and paid the \$216.00 fee for Technical Revision online.

For this Technical Revision, we are slightly revising the Reclamation Plan of the Carbon Valley Resource due to the removal of oil and gas structures. (Changes to reclamation plans are always a possibility due to changes with oil and gas facilities.) Note - there are no changes to the reclamation process.

L.G. Everist worked together with PDC Energy, Inc. as they went through the process of abandonment and removal of their oil wells, which were located along the south side of the Carbon Valley Resource. PDC has capped and removed the oil wells, pipelines and any other associated oil and gas structures. After PDC's removal process was complete, L.G. Everist was able to begin mining through the abandoned oil and gas peninsula for additional sand and gravel reserves within the permit area.

Carbon Valley Resource's reclamation plan is revised as shown on **Exhibit F - Reclamation Plan Map (April-2023)**. When PDC's wells and pipelines were operational, they were located on peninsula along the southern side of the area, and were given the required set-back from mining activity. Now, with the PDC structures and peninsula gone, the southern perimeter of the site can be reclaimed in a straighter line along the Last Chance Ditch (of course with the proper required set-backs) as shown on the map.

We have attached the revised (new) **Exhibit F - Reclamation Plan Map (July-2023)**, and a copy of the previous (old) **Exhibit F Reclamation Plan Map (2018)** is attached for reference.

If you have any questions or need anything else to process this Technical Revision, please contact me at [lmshults@lgeverist.com](mailto:lmshults@lgeverist.com), or 303-286-2247 (office) or 303-514-2778 (mobile).

Sincerely,

Lynn Mayer Shults  
Regulatory Manager

cc: files - L.G. Everist, Inc., and Environment, Inc.

attachments:

- **TR Fee** - for \$216.00 (online payment)
- **TR Form** - Request for Technical Revision (TR) Cover Sheet
- **Exhibit F - Reclamation Plan Map (revised Apr-2023)**
- *reference: previous Exhibit F - Reclamation Plan Map (2018)*
- *reference: Abandonment Reports (2) for PDC Energy, Inc. oil wells*



## COLORADO DIVISION OF RECLAMATION, MINING AND SAFETY

1313 Sherman Street, Room 215, Denver, Colorado 80203 ph(303) 866-3567

### REQUEST FOR TECHNICAL REVISION (TR) COVER SHEET

File No.: M- 2001-017 Site Name: Carbon Valley Resource  
County Weld TR# \_\_\_\_\_ (DRMS Use only)  
Permittee: L.G. Everist, Inc.

Operator (If Other than Permittee): same

Permittee Representative: Lynn Mayer Shults (lmshults@lgeverist.com, cell-303-514-2778)

Please provide a brief description of the proposed revision: Minor revision to reclamation plan

This is a minor revision to the reclamation plan due to the abandonment and removal of oil and gas facilities. Please see the attached cover letter, revised Exhibit F - Reclamation Plan Map, and reference files for more details.

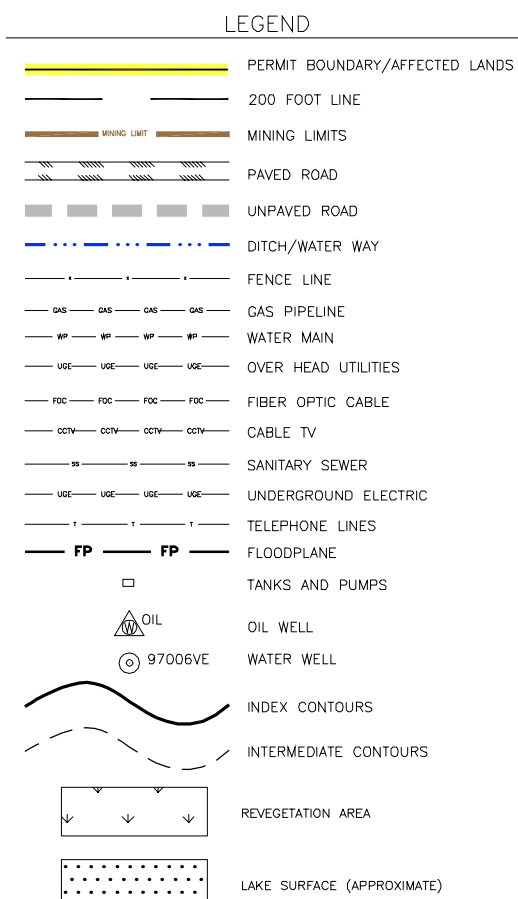
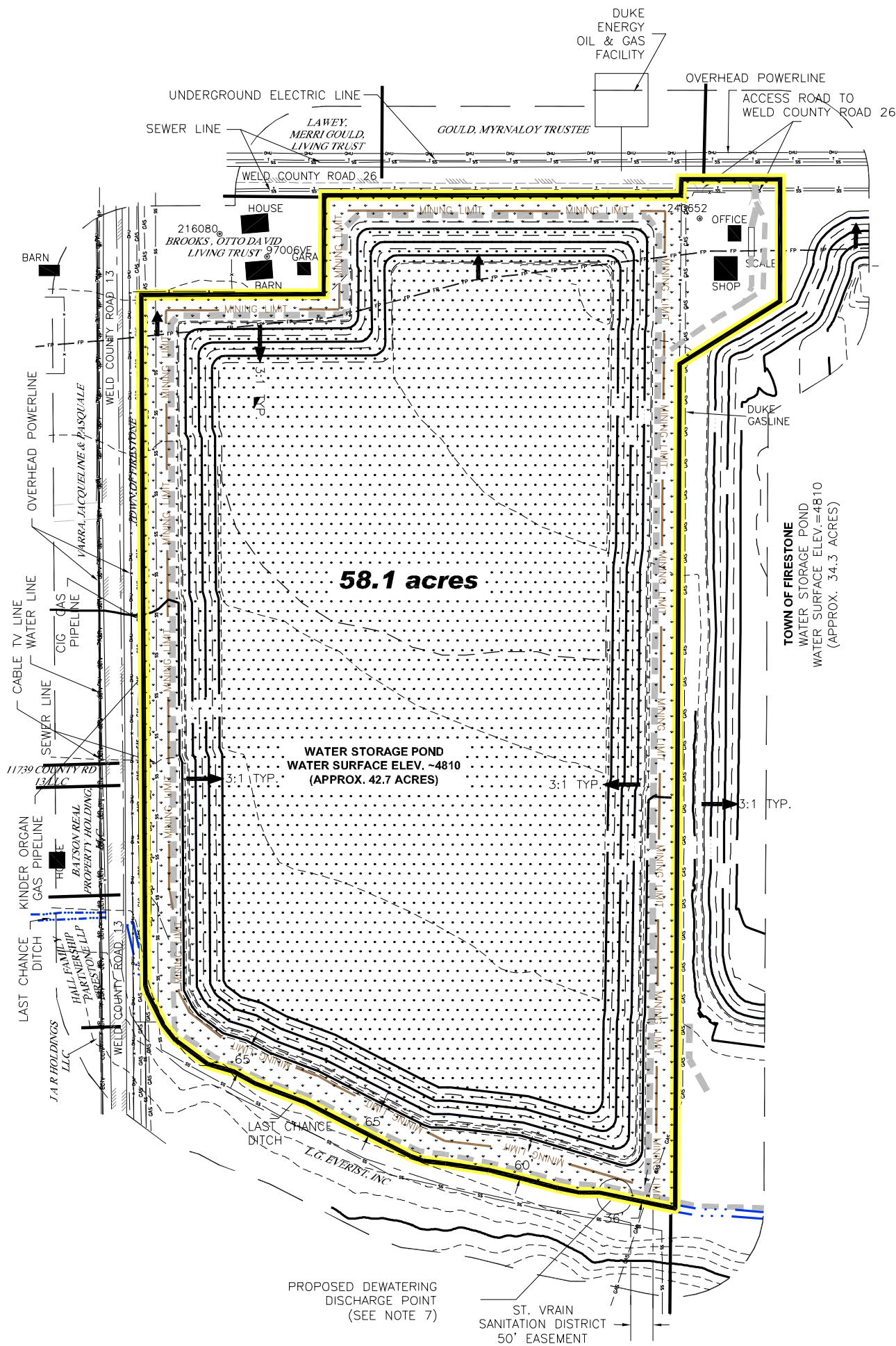
As defined by the Minerals Rules, a Technical Revision (TR) is: "a change in the permit or application which does not have more than a minor effect upon the approved or proposed Reclamation or Environmental Protection Plan." The Division is charged with determining if the revision as submitted meets this definition. If the Division determines that the proposed revision is beyond the scope of a TR, the Division may require the submittal of a permit amendment to make the required or desired changes to the permit.

The request for a TR is not considered "filed for review" until the appropriate fee is received by the Division (as listed below by permit type). Please submit the appropriate fee with your request to expedite the review process. After the TR is submitted with the appropriate fee, the Division will determine if it is approvable within 30 days. If the Division requires additional information to approve a TR, you will be notified of specific deficiencies that will need to be addressed. If at the end of the 30 day review period there are still outstanding deficiencies, the Division must deny the TR unless the permittee requests additional time, in writing, to provide the required information.

There is no pre-defined format for the submittal of a TR; however, it is up to the permittee to provide sufficient information to the Division to approve the TR request, including updated mining and reclamation plan maps that accurately depict the changes proposed in the requested TR.

Required Fees for Technical Revision by Permit Type - Please mark the correct fee and submit it with your request for a Technical Revision.

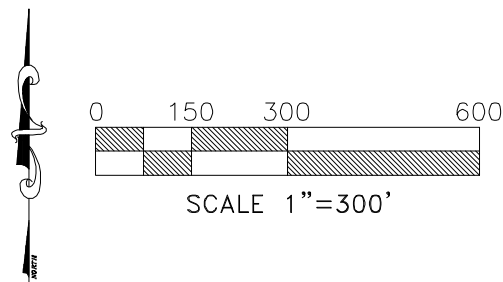
<u>Permit Type</u>	<u>Required TR Fee</u>	<u>Submitted</u> (mark only one)
110c, 111, 112 construction materials, and 112 quarries	\$216	<input checked="" type="checkbox"/>
112 hard rock (not DMO)	\$175	<input type="checkbox"/>
110d, 112d(1, 2 or 3)	\$1006	<input type="checkbox"/>



**LEGAL DESCRIPTION**

**CARBON VALLEY RESOURCE PROPERTY:**

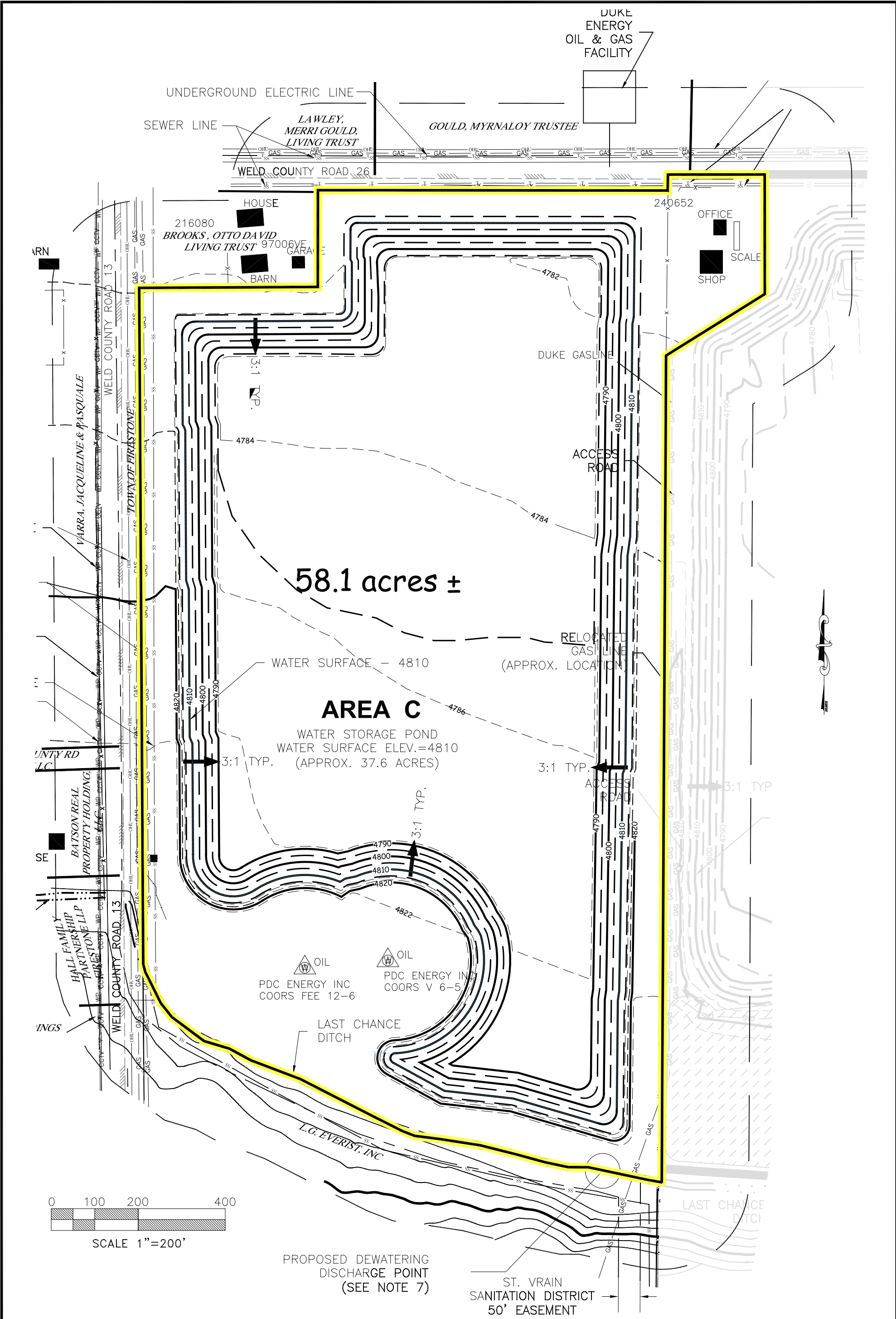
A TRACT OF LAND LOCATED IN PARTS OF THE NE  $\frac{1}{4}$ NW $\frac{1}{4}$ , SW $\frac{1}{4}$ NW $\frac{1}{4}$  AND NW $\frac{1}{4}$ NW $\frac{1}{4}$ , OF SECTION 6, TOWNSHIP 2 NORTH, RANGE 67 WEST OF THE 6th P.M., WELD COUNTY, COLORADO, LYING NORTH OF THE CENTERLINE OF THE LAST CHANCE DITCH AND SOUTH OF WELD COUNTY ROAD 26 CONTAINING 58.1 ACRES  $\pm$



TECHNICAL REVISION - JULY 18, 2023  
MAP EXHIBIT F - RECLAMATION PLAN

DATE	DESCRIPTION	BY	JOB NO	DATE	SCALE	DRAWN BY	DESIGNED BY	APPROVAL	REV SHEET
9/17/2001	ORIGINAL PERMIT ISSUED	LGE/B&G							
6/21/2010	PARTIAL RELEASE - FRENCH PARCEL	LGE							
10/21/2016	AMENDMENT - ADDED BROOKS FARM PARCEL	LGE/ENV							
10/19/2018	PARTIAL RELEASE - LOHMANN PARCEL	LGE/ENV							
7/18/2023	PARTIAL RELEASE - REMOVED O&G FACILITY SOUTH END	LGE/ENV							
PREPARED BY: <b>ENVIRONMENT, INC.</b> 7985 VANCE DR., # 205A ARVADA, CO 80003 (303) 423-7297 Environment-inc@outdra.net			7/18/2023		1"=300'	SLO	SLO		1
L.G. EVERIST INC. 7321 EAST 88TH AVE., SUITE 200 HENDERSON, CO 80640									
CARBON VALLEY RESOURCE MLRB PERMIT # M-2001-017 WELD COUNTY COLORADO									





BROOKS FARM PARCEL (WEST) - AREA C  
A TRACT OF LAND LOCATED IN PARTS OF THE SW<sup>1</sup>/<sub>4</sub>, NW<sup>1</sup>/<sub>4</sub>, AND NW<sup>1</sup>/<sub>4</sub>, OF SECTION 6, TOWNSHIP 2 NORTH, RANGE 67 WEST OF THE 6th P.M., WELD COUNTY, COLORADO, LYING NORTH OF THE CENTERLINE OF THE LAST CHANCE DITCH AND SOUTH OF WELD COUNTY ROAD 26 CONTAINING 56.4 ACRES ±

TOTAL PERMIT AREA = 58.1 acres ±

DATE	DESCRIPTION	BY
2/2002	ORIGINAL UBR APPLICATION	BIGDRF
3/2013	PARTIAL RELEASE - FRENCH	ENVISB.
6/2016	AMENDMENT - ADD BROOK FARM PARCEL	ENVISB.
10/2018	ADDITIONAL CORRECTIONS & CHANGES	ENVISB.
07/2019	TECHNICAL REVISION CONVERT TO OPTION 2	LGE/ENV.
07/2019	PARTIAL RELEASE - OLD MINE AREA	LGE/ENV.

PREPARED BY: **ENVIRONMENT, INC.**  
7985 VANCE DR., # 205A  
ARVADA, CO 80003  
(303) 423-7297  
[Environment-inc@outdoors.net](mailto:Environment-inc@outdoors.net)

JOB NO	DATE	SCALE	DRAWN BY	DESIGNED BY	APPROVAL	REV	SHEET
	7/2018	1"=200'	S. O'BRIAN	D FOX			

**L.G. EVERIST, INC.**  
7321 EAST 88th AVE., SUITE 200  
HENDERSON, CO 80640

**CARBON VALLEY RESOURCE**  
WELD COUNTY, COLORADO

FORM  
6Rev  
02/20

# State of Colorado Oil and Gas Conservation Commission

1120 Lincoln Street, Suite 801, Denver, Colorado 80203 Phone: (303) 894-2100 Fax: (303) 894-2109



DE ET OE ES

Document Number:

402269362

Date Received:

12/20/2019

## WELL ABANDONMENT REPORT

This form is to be submitted as an Intent to Abandon whenever an abandonment is planned on a borehole. After the abandonment is complete, this form shall again be submitted as a Subsequent Report of the actual work completed. The approved intent shall be valid for six months after the approval date, after that period, a new intent will be required. Attachments required with the Intent to Abandon are wellbore diagrams of the current configuration and the proposed configuration with plugs set.

A Subsequent Report of Abandonment shall indicate the actual work completed. Attachments required with a Subsequent Report are a wellbore diagram showing plugs that were set and casing remaining in the hole, the job summaries from all plugging contractors used, including wireline and cementing (third party verification) and any logs that may have been run during abandonment.

OGCC Operator Number: 69175

Contact Name: Valerie Danson

Name of Operator: PDC ENERGY INC

Phone: (970) 506-9272

Address: 1775 SHERMAN STREET - STE 3000

Fax:

City: DENVER State: CO Zip: 80203

Email: valerie.danson@pdce.com

For "Intent" 24 hour notice required,

Name:

Tel:

COGCC contact:

Email:

Type of Well Abandonment Report: ☐ Notice of Intent to Abandon ☒ Subsequent Report of Abandonment

API Number 05-123-19610-00

Well Name: COORS FEE

Well Number: 12-6

Location: QtrQtr: SWNW Section: 6 Township: 2N Range: 67W Meridian: 6

County: WELD

Federal, Indian or State Lease Number:

Field Name: WATTENBERG

Field Number: 90750

### Only Complete the Following Background Information for Intent to Abandon

Latitude: 40.170449 Longitude: -104.940292

GPS Data: GPS Quality Value: 2.9 Type of GPS Quality Value: PDOP Date of Measurement: 07/26/2010

GPS Instrument Operator's Name: Shantell Kling

Reason for Abandonment: ☐ Dry ☐ Production Sub-economic ☐ Mechanical Problems☐ OtherCasing to be pulled: ☐ Yes ☐ No Estimated Depth:Fish in Hole: ☐ Yes ☐ No If yes, explain details belowWellbore has Uncemented Casing leaks: ☐ Yes ☐ No If yes, explain details below

Details:

### Current and Previously Abandoned Zones

Formation	Perf. Top	Perf. Btm	Abandoned Date	Method of Isolation	Plug Depth
J SAND	7750	7772	11/19/2019	B PLUG CEMENT TOP	7700

Total: 1 zone(s)

### Casing History

Casing Type	Size of Hole	Size of Casing	Weight Per Foot	Setting Depth	Sacks Cement	Cement Bot	Cement Top	Status
SURF	12+1/4	8+5/8	24	483	330	483	0	VISU
1ST	7+7/8	4+1/2	11.6	7,886	270	7,886	6,426	CBL

## Plugging Procedure for Intent and Subsequent Report

CIBP #1: Depth 7700 with 2 sacks cmt on top. CIBP #2: Depth 7253 with 2 sacks cmt on top.  
 CIBP #3: Depth 6981 with 2 sacks cmt on top. CIBP #4: Depth 150 with 34 sacks cmt on top.  
 CIBP #5: Depth \_\_\_\_\_ with \_\_\_\_\_ sacks cmt on top.

NOTE: Two(2) sacks cement required on all CIBPs.

Set 4 sks cmt from 4014 ft. to 3883 ft. Plug Type: CASING Plug Tagged: ☐  
 Set 88 sks cmt from 2100 ft. to 1800 ft. Plug Type: STUB PLUG Plug Tagged: ☐  
 Set \_\_\_\_\_ sks cmt from \_\_\_\_\_ ft. to \_\_\_\_\_ ft. Plug Type: \_\_\_\_\_ Plug Tagged: ☐  
 Set \_\_\_\_\_ sks cmt from \_\_\_\_\_ ft. to \_\_\_\_\_ ft. Plug Type: \_\_\_\_\_ Plug Tagged: ☐  
 Set \_\_\_\_\_ sks cmt from \_\_\_\_\_ ft. to \_\_\_\_\_ ft. Plug Type: \_\_\_\_\_ Plug Tagged: ☐

Perforate and squeeze at 4200 ft. with 46 sacks. Leave at least 100 ft. in casing 4015 CICR Depth  
 Perforate and squeeze at \_\_\_\_\_ ft. with \_\_\_\_\_ sacks. Leave at least 100 ft. in casing \_\_\_\_\_ CICR Depth  
 Perforate and squeeze at \_\_\_\_\_ ft. with \_\_\_\_\_ sacks. Leave at least 100 ft. in casing \_\_\_\_\_ CICR Depth

(Cast Iron Cement Retainer Depth)

Set 207 sacks half in. half out surface casing from 708 ft. to 0 ft. Plug Tagged: ☒

Set \_\_\_\_\_ sacks at surface

Cut four feet below ground level, weld on plate Above Ground Dry-Hole Marker: ☐ Yes ☐ No

Set \_\_\_\_\_ sacks in rat hole Set \_\_\_\_\_ sacks in mouse hole

### Additional Plugging Information for Subsequent Report Only

Casing Recovered: 2000 ft. 4+1/2 inch casing Cut and Cap Date: 11/22/2019  
 of \_\_\_\_\_

\*Wireline Contractor: Ranger Energy Services

\*Cementing Contractor: NexTier

Type of Cement and Additives Used: Type III 14.8 PPG & Type III 12.0 PPG Sussex Blend Portland Cement

Flowline/Pipeline has been abandoned per Rule 1105 ☐ Yes ☐ No

#### Technical Detail/Comments:

Coors Fee 12-6 (05-123-19610) Plugging Procedure  
 Producing Formation: J-Sand: 7750'-7772'

Upper Pierre Aquifer: 505'-1535'  
 TD: 7403' PBD: 7875' (8/13/1998)  
 Surface Casing: 8 5/8" 24# @ 483' w/ 330 sxs  
 Production Casing: 4 1/2" 11.6# @ 7886' w/ 270 sxs cmt (TOC @ 6426' - CBL)

#### Procedure:

1. MIRU pulling unit. Pull 2 3/8" tubing.
2. RU wireline company.
3. TIH with CIBP. Set BP at 7700'. Top with 2 sxs 15.8#/gal Cl G cement. (Top of J-sand perms @ 7750')
4. TIH with CIBP. Set BP at 7253'. Top with 2 sxs 15.8#/gal Cl G cement. (Top of Codell @ 7303')
5. TIH with CIBP. Set BP at 6981'. Top with 2 sxs 15.8#/gal Cl G cement. (Top of Niobrara @ 7031')
6. Run CBL 6950' to Surface.
7. TIH with perf gun. Shoot lower squeeze holes at 4200' and upper squeeze holes at 4000'.
8. TIH with CICR. Set at 4015'. RU cementing company. Sting in and pump 50 sxs 12.0#/gal Type III Sussex Blend cement (Sussex coverage from 4118'-4018'). Sting out and pump cement on top of CICR. TOC at 3883'.
9. TIH with casing cutter. Cut 4 1/2" casing at 2000'. Pull cut casing.
10. TIH with tubing to 2100'. RU cementing company. Mix and pump 88 sxs 14.8#/gal Type III cement down tubing. TOC at 1800'.
11. Pick up tubing to 708'. Mix and pump 207 sxs 14.8#/gal Type III cement down tubing. Cement circulate to surface (Pierre coverage from 683'-surface).
12. RU wireline company. TIH with CIBP. Set BP at 150'.
13. RU cementing company. Topped off with 34 sxs 14.8#/gal Type III cement down tubing. Cement circulate to surface
14. Cut surface casing 6' below ground level and weld on cap.

I hereby certify all statements made in this form are, to the best of my knowledge, true, correct, and complete.

Signed: \_\_\_\_\_ Print Name: Valerie Danson  
Title: Reg Tech Date: 12/20/2019 Email: valerie.danson@pdce.com

Based on the information provided herein, this Well Abandonment Report (Form 6) complies with COGCC Rules and applicable orders and is hereby approved.

COGCC Approved: Jacobson, Eric Date: 4/16/2020

**CONDITIONS OF APPROVAL, IF ANY:**

**COA Type Description**

--	--

**Attachment Check List**

**Att Doc Num Name**

402269362	FORM 6 SUBSEQUENT SUBMITTED
402269400	CEMENT BOND LOG
402269401	CEMENT JOB SUMMARY
402269402	OPERATIONS SUMMARY
402269403	WELLBORE DIAGRAM

Total Attach: 5 Files

**General Comments**

**User Group Comment Comment Date**

		Stamp Upon Approval
--	--	---------------------

Total: 0 comment(s)

FORM  
6Rev  
11/20

# State of Colorado Oil and Gas Conservation Commission

1120 Lincoln Street, Suite 801, Denver, Colorado 80203 Phone: (303) 894-2100 Fax: (303) 894-2109



DE ET OE ES

Document Number:

403222098

Date Received:

11/08/2022

## WELL ABANDONMENT REPORT

This form is to be submitted as an Intent to Abandon whenever an abandonment is planned on a borehole. After the abandonment is complete, this form shall again be submitted as a Subsequent Report of the actual work completed. The approved intent shall be valid for six months after the approval date, after that period, a new intent will be required. Attachments required with the Intent to Abandon are wellbore diagrams of the current configuration and the proposed configuration with plugs set.

A Subsequent Report of Abandonment shall indicate the actual work completed. Attachments required with a Subsequent Report are a wellbore diagram showing plugs that were set and casing remaining in the hole, the job summaries from all plugging contractors used, including wireline and cementing (third party verification) and any logs that may have been run during abandonment.

OGCC Operator Number: 69175

Contact Name: Valerie Danson

Name of Operator: PDC ENERGY INC

Phone: (970) 506-9272

Address: 1775 SHERMAN STREET - STE 3000

Fax:

City: DENVER State: CO Zip: 80203

Email: valerie.danson@pdce.com

For "Intent" 24 hour notice required,

Name: Revas, Robbie

Tel: (720) 661-7242

COGCC contact:

Email: robbie.revas@state.co.us

Type of Well Abandonment Report: ☐ Notice of Intent to Abandon ☒ Subsequent Report of Abandonment

API Number 05-123-17251-00

Well Name: COORS V

Well Number: 6-5

Location: QtrQtr: SWNW Section: 6 Township: 2N Range: 67W Meridian: 6

County: WELD

Federal, Indian or State Lease Number:

Field Name: WATTENBERG

Field Number: 90750

### Only Complete the Following Background Information for Intent to Abandon

Latitude: 40.170511

Longitude: -104.939618

GPS Data: GPS Quality Value: 2.9 Type of GPS Quality Value: PDOP Date of Measurement: 07/26/2010

Reason for Abandonment: ☐ Dry ☐ Production Sub-economic ☐ Mechanical Problems☐ OtherCasing to be pulled: ☐ Yes ☐ No Estimated Depth:Fish in Hole: ☐ Yes ☐ No If yes, explain details belowWellbore has Uncemented Casing leaks: ☐ Yes ☐ No If yes, explain details below

Details:

### Current and Previously Abandoned Zones

Formation	Perf. Top	Perf. Btm	Abandoned Date	Method of Isolation	Plug Depth
CODELL	7291	7309	09/14/2022	B PLUG CEMENT TOP	7241

Total: 1 zone(s)

### Casing History

Casing Type	Size of Hole	Size of Casing	Grade	Wt/Ft	Csg/Liner Top	Setting Depth	Sacks Cmt	Cmt Btm	Cmt Top	Status
SURF	12+1/4	8+5/8	J55	24	0	487	230	500	0	VISU
1ST	7+7/8	3+1/2	J55	7.7	0	7441	165	7464	6536	CBL
S.C. 1.1						5014	165	5014	3738	CBL



## Plugging Procedure for Intent and Subsequent Report

CIBP #1: Depth 7241 with 2 sacks cmt on top. CIBP #2: Depth 6988 with 2 sacks cmt on top.  
CIBP #3: Depth 4144 with 2 sacks cmt on top. CIBP #4: Depth \_\_\_\_\_ with \_\_\_\_\_ sacks cmt on top.  
CIBP #5: Depth \_\_\_\_\_ with \_\_\_\_\_ sacks cmt on top.

NOTE: Two(2) sacks cement required on all CIBPs.

Set 100 sks cmt from 2591 ft. to 2300 ft. Plug Type: STUB PLUG Plug Tagged: ☐  
Set 100 sks cmt from 1637 ft. to 1435 ft. Plug Type: OPEN HOLE Plug Tagged: ☐  
Set \_\_\_\_\_ sks cmt from \_\_\_\_\_ ft. to \_\_\_\_\_ ft. Plug Type: \_\_\_\_\_ Plug Tagged: ☐  
Set \_\_\_\_\_ sks cmt from \_\_\_\_\_ ft. to \_\_\_\_\_ ft. Plug Type: \_\_\_\_\_ Plug Tagged: ☐  
Set \_\_\_\_\_ sks cmt from \_\_\_\_\_ ft. to \_\_\_\_\_ ft. Plug Type: \_\_\_\_\_ Plug Tagged: ☐

Perforate and squeeze at \_\_\_\_\_ ft. with \_\_\_\_\_ sacks. Leave at least 100 ft. in casing \_\_\_\_\_ CICR Depth

Perforate and squeeze at \_\_\_\_\_ ft. with \_\_\_\_\_ sacks. Leave at least 100 ft. in casing \_\_\_\_\_ CICR Depth

Perforate and squeeze at \_\_\_\_\_ ft. with \_\_\_\_\_ sacks. Leave at least 100 ft. in casing \_\_\_\_\_ CICR Depth

(Cast Iron Cement Retainer Depth)

Set 205 sacks half in. half out surface casing from 707 ft. to 0 ft. Plug Tagged: ☒

Set \_\_\_\_\_ sacks at surface

Cut four feet below ground level, weld on plate Above Ground Dry-Hole Marker: ☐ Yes ☐ No

Set \_\_\_\_\_ sacks in rat hole Set \_\_\_\_\_ sacks in mouse hole

### Additional Plugging Information for Subsequent Report Only

Casing Recovered: 2500 ft. of 3+1/2 inch casing

Surface Plug Setting Date: 09/15/2022 Cut and Cap Date: 10/17/2022 Number of Days from Setting Surface Plug to Capping or Sealing the Well: 32

\*Wireline Contractor: SureFire Wireline Services

\*Cementing Contractor: DUCO Inc. Cementing Services

Type of Cement and Additives Used: Class G 15.8 PPG Cement

Flowline/Pipeline has been abandoned per Rule 1105 ☒ Yes ☐ No

#### Technical Detail/Comments:

Coors V 6-5 (05-123-17251) / Plugging Procedure  
Producing Formation: Codell: 7291'-7309'  
Upper Pierre Aquifer: 505'-1535'  
Deepest Water Well: 490'  
TD: 7464' PBD: 7437' (11/16/1993)  
Surface Casing: 8 5/8" 24# @ 487' w/ 230 sxs cmt  
Production Casing: 3 1/2" 7.7# @ 7441' w/ 165 sxs (TOC @ 6536' - CBL)  
S.C.1.1. @ 5014' w/ 165 sxs (TOC @ 3738' - CBL)

#### Procedure:

1. MIRU pulling unit. Pull 2 1/16" tubing.
2. RU wireline company.
3. TIH with CIBP. Set BP at 7241'. Top with 2 sxs 15.8#/gal CI G cement. (Top of Codell perms @ 7291')
4. TIH with CIBP. Set BP at 6988'. Top with 2 sxs 15.8#/gal CI G cement. (Top of Niobrara @ 7038')
5. TIH with CIBP. Set BP at 4144'. Top with 2 sxs 15.8#/gal CI G cement. (Coverage of Sussex and Shannon tops @ 4194' and 4648')
6. Ran a CBL from 3000' to Surface.
7. TIH with casing cutter. Cut 3 1/2" casing @ 2500'. Pull cut casing.
8. TIH with tubing to 2591'. RU cementing company. Mix and pump 96 sxs 15.8#/gal CI G cement down tubing. (Stub plug from 2591'-2300') TOC at 2300'.
9. TIH with tubing to 1637'. Mix and pump 100 sxs 15.8#/gal CI G cement down tubing. (Pierre coverage from 1635'-1435') TOC at 1435'.
10. Pick up with tubing to 707'. Mix and pump 244 sxs 15.8#/gal CI G cement down tubing. Cement circulate to surface.
11. Well casing cut and capped per COGCC guidelines at a depth as not to interfere with soil cultivation.

I hereby certify all statements made in this form are, to the best of my knowledge, true, correct, and complete.

Signed: \_\_\_\_\_ Print Name: Valerie Danson  
Title: Reg Analyst Date: 11/8/2022 Email: valerie.danson@pdce.com

Based on the information provided herein, this Well Abandonment Report (Form 6) complies with COGCC Rules and applicable orders and is hereby approved.

COGCC Approved: JENKINS, STEVE Date: 1/27/2023

**CONDITIONS OF APPROVAL, IF ANY:**

COA Type	Description
0 COA	

**Attachment List**

Att Doc Num	Name
403222098	FORM 6 SUBSEQUENT SUBMITTED
403222216	CEMENT BOND LOG
403222222	CEMENT JOB SUMMARY
403222224	OTHER
403222287	OPERATIONS SUMMARY
403222288	WELLBORE DIAGRAM

Total Attach: 6 Files

**General Comments**

User Group	Comment	Comment Date
		Stamp Upon Approval

Total: 0 comment(s)