

Pit sign



Water flow (run off)



Photo 8: View north of sediment pond and break in the dam which is allowing water to flow into the ditch along CR62. See above problem citation.



Pit sign



Water flow  
(damaged berm)



Damage caused  
by run off



The damage to the  
road in and the berm  
holding the water in  
the retention pond.



Repaired berm



Repaired road



Repaired berm and CR 62

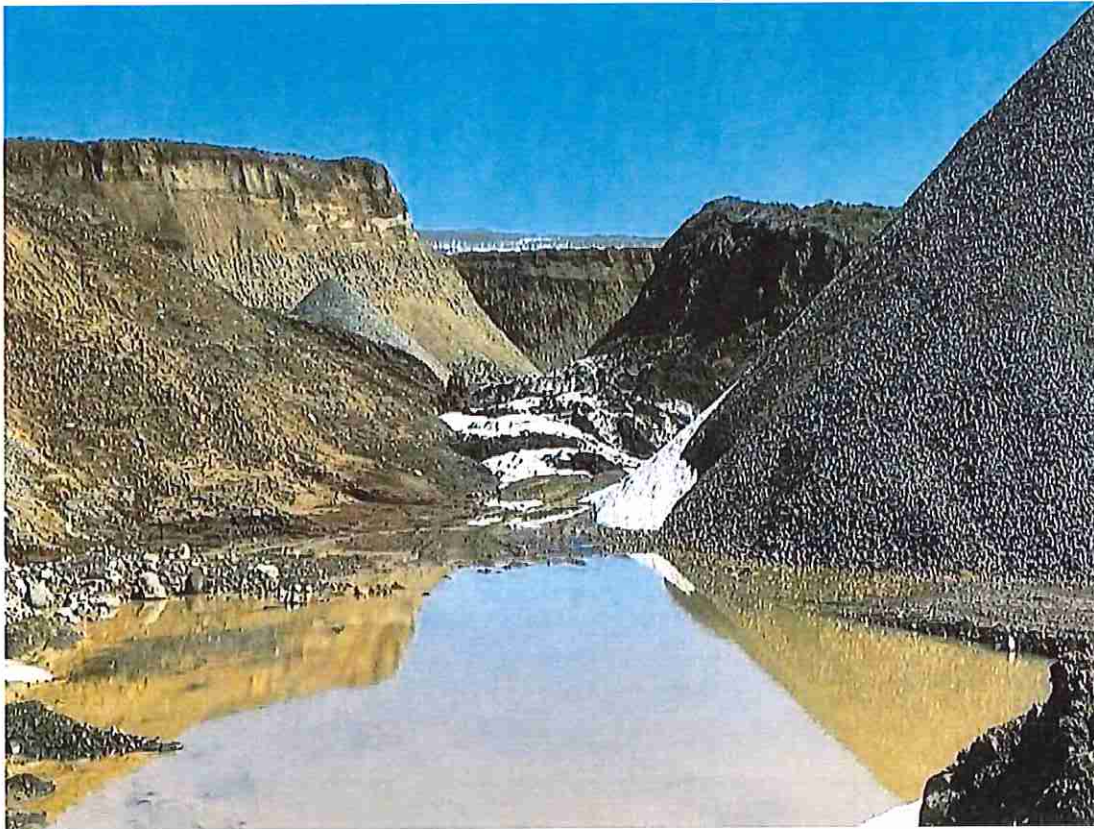




Damage to CR 62



Repair to CR 62



Standing water in Pit



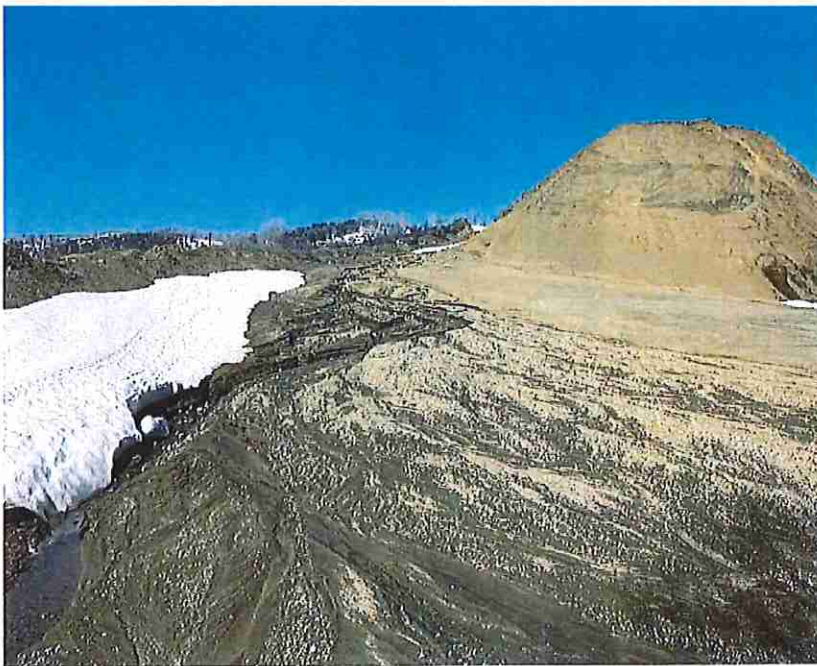


Standing water dissipated



Standing water dissipated  
Both sides of the gravel pile





Extremely heavy run off  
Not enough capacity anywhere  
In the area for oncoming water

**Photo 10: View north of the western pit boundary. Deeply incised erosional features are seen coming from uphill where water drains to the sediment pond. Water is flowing outside of the ditch in which it is designed to collect.**



Run off slowed down  
Left deep ruts in the  
Pit floor



Repairs completed on pit floor. Berm repaired to divert all runoff into the retention pond.





Looking up the hill where the  
snow damage was.