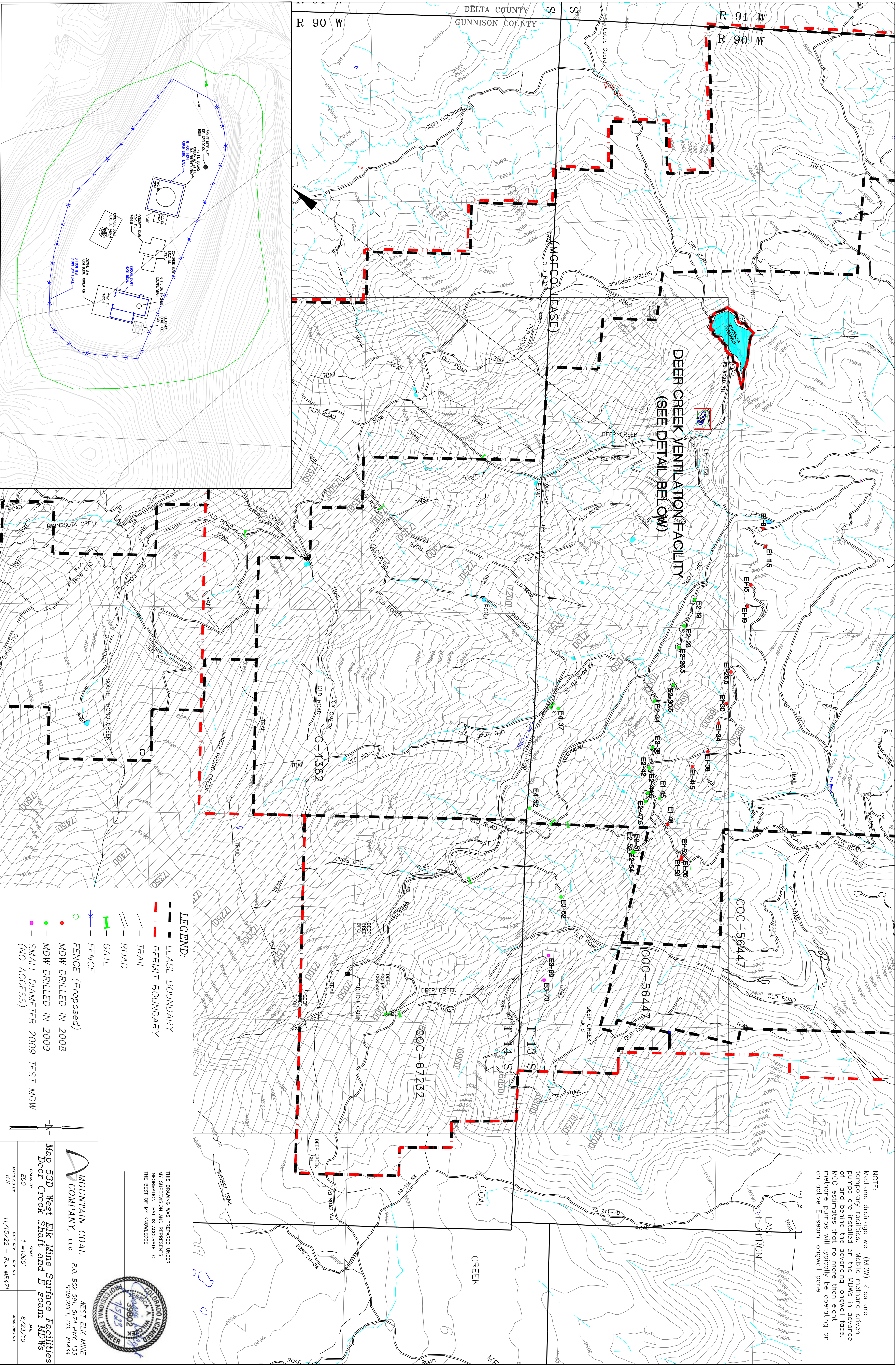


NOTE: Methane drainage well (MDW) sites are temporary facilities. Mobile methane driven pumps are installed on the MDWs in advance of and behind the advancing longwall face. MCC estimates that no more than eight methane pumps will typically be operating on an active E-seam longwall panel.



THIS DRAWING WAS PREPARED UNDER MY SUPERVISION AND REPRESENTS INFORMATION THAT IS ACCURATE TO THE BEST OF MY KNOWLEDGE



**MOUNTAIN COAL  
COMPANY, L.L.C.**

WEST ELK MINE  
P.O. BOX 591, 5174 HWY. 133  
SOMERSET, CO. 81434

Map 53D West Elk Mine Surface Facilities  
Deer Creek Shaft and E-seam MDWs

DRAWN BY EDO APPROVED BY KW	SCALE 1"=1000' DATE REV. - REV. NO 11/15/22 - Rev MR471	DATE 6/23/10 ACAD DWG NO.
--------------------------------------	--	---------------------------------