



*Broken Arrow
Investments, LLC
801 8th Street, Suite 130
Greeley, CO 80631*

June 16, 2023

Mr. Eric Scott
Environmental Protection Specialist
State of Colorado
Division of Reclamation, Mining, & Safety
1313 Sherman Street – Room 215
Denver, CO 80203

RE: Broken Arrow Investments, LLC – File No. M-2008-017 Derr Pit – Summary for June Water Level Reporting

Dear Mr. Scott,

Broken Arrow Investments, LLC is providing this summary letter to discuss and provide information in regard to the June off-site an on-site monitor wells and provide the dewatering volumes pumped for May.

During the month of May a total of 0.0 acre-feet was pumped and discharged into the on-site recharge ponds within the Derr Pit.

AgPro was able to get the normal monthly readings/measurements on all of the off-site wells for the June readings. One trigger level was reached for the Taylor (Now owned by Francis) domestic well but a new submersible pump and motor were installed and lowered to the bottom of the well as part of the improvements to this well in January of 2020 that were performed by Quality Well and Pump. At this time we will continue to monitor as typically well levels in the area come up when fields start irrigating and the runoff comes down the Section 3 ditch on the west side of the Loloff Pit and then turns to the east crossing Balsam Avenue just south of this property. As discussed in our technical revision letter there are some on-site wells that were removed due to the slurry wall construction and those wells are no longer in place. Monitor Well 11 is no longer accessible and neither is Monitor Well 1. The on-site monitor wells saw an increases in the elevation of the water levels. The water level elevations in the monitor wells on the Phase 1-4 portion of the pit went up on the south side by 0.91 feet and up by 0.74 feet on the north side. The water level elevations in the monitor wells on the upper terrace of the permit area increased by 0.75 feet for MW-14, increased by 0.52 feet for MW-15, increased by 0.67 feet for MW-16, increased by 1.46 feet for MW-17, and increased by 0.56 feet for MW-18.

Please give me a call at (970) 566-5090 or send an e-mail to discuss further.

Sincerely,

Kelly Hodge, Broken Arrow Investments, LLC

Derr Pit Monitor Well Readings

Well Designation		MW-1		MW-2		
Top of Well (ft)		4631.38		4630.91		
Ground Elevation (ft)		4629.09		4629.78		
Date	Depth to Groundwater from Top of Well (ft)	Depth to Groundwater from Ground (ft)	Elevation of Groundwater (ft)	Depth to Groundwater from Top of Well (ft)	Depth to Groundwater from Ground (ft)	Elevation of Groundwater (ft)
September 26, 2018	16.73	14.44	4614.65	17.18	16.05	4613.73
October 26, 2018	17.06	14.77	4614.32	17.06	15.93	4613.85
November 20, 2018	17.14	14.85	4614.24	17.03	15.90	4613.88
December 18, 2018	17.38	15.09	4614.00	17.03	15.90	4613.88
January 17, 2019	17.72	15.43	4613.66	17.56	16.43	4613.35
February 12, 2019	18.10	15.81	4613.28	17.95	16.82	4612.96
March 7, 2019	18.30	16.01	4613.08	18.19	17.06	4612.72
April 22, 2019	27.66	25.37	4603.72	19.06	17.93	4611.85
May 14, 2019	22.31	20.02	4609.07	28.70	27.57	4602.21
June 21, 2019	14.60	12.31	4616.78	20.28	19.15	4610.63
July 24, 2019	16.41	14.12	4614.97	20.75	19.62	4610.16
August 21, 2019	17.99	15.70	4613.39	21.11	19.98	4609.80
September 17, 2019	not read	#VALUE!	#VALUE!	22.56	21.43	4608.35
October 17, 2019	18.50	16.21	4612.88	22.18	21.05	4608.73
November 13, 2019	18.46	16.17	4612.92	23.31	22.18	4607.60
December 10, 2019	not read	#VALUE!	#VALUE!	23.30	22.17	4607.61
January 9, 2020	not read	#VALUE!	#VALUE!	23.53	22.40	4607.38
February 12, 2020	not read	#VALUE!	#VALUE!	25.04	23.91	4605.67
March 12, 2020	not read	#VALUE!	#VALUE!	21.48	20.35	4609.43
April 9, 2020	not read	#VALUE!	#VALUE!	19.75	18.62	4611.16
May 14, 2020	not read	#VALUE!	#VALUE!	19.55	18.42	4611.36
June 11, 2020	not read	#VALUE!	#VALUE!	19.81	18.68	4611.10
July 9, 2020	not read	#VALUE!	#VALUE!	19.08	17.95	4611.83
August 13, 2020	not read	#VALUE!	#VALUE!	22.17	21.04	4608.74
September 10, 2020	not read	#VALUE!	#VALUE!	19.86	18.73	4611.05
October 8, 2020	not read	#VALUE!	#VALUE!	19.99	18.86	4610.92
November 12, 2020	not read	#VALUE!	#VALUE!	24.65	23.52	4606.26
December 10, 2020	not read	#VALUE!	#VALUE!	not read	#VALUE!	#VALUE!
January 14, 2021	not read	#VALUE!	#VALUE!	not read	#VALUE!	#VALUE!
February 12, 2021	not read	#VALUE!	#VALUE!	not read	#VALUE!	#VALUE!
March 11, 2021	not read	#VALUE!	#VALUE!	not read	#VALUE!	#VALUE!
April 8, 2021	not read	#VALUE!	#VALUE!	not read	#VALUE!	#VALUE!
May 13, 2021	not read	#VALUE!	#VALUE!	not read	#VALUE!	#VALUE!
June 10, 2021	17.05	14.76	4614.33	not read	#VALUE!	#VALUE!
July 8, 2021	17.70	15.41	4613.68	not read	#VALUE!	#VALUE!
August 12, 2021	19.16	16.87	4612.22	not read	#VALUE!	#VALUE!
September 9, 2021	19.45	17.16	4611.93	not read	#VALUE!	#VALUE!
October 14, 2021	20.50	18.21	4610.88	not read	#VALUE!	#VALUE!
November 12, 2021	20.00	17.71	4611.38	not read	#VALUE!	#VALUE!
December 9, 2021	20.12	17.83	4611.26	not read	#VALUE!	#VALUE!
January 13, 2022	not read	#VALUE!	#VALUE!	not read	#VALUE!	#VALUE!
February 9, 2022	20.11	17.82	4611.27	not read	#VALUE!	#VALUE!
March 11, 2022	not read	#VALUE!	#VALUE!	not read	#VALUE!	#VALUE!
April 14, 2022	not read	#VALUE!	#VALUE!	not read	#VALUE!	#VALUE!
May 17, 2022	not read	#VALUE!	#VALUE!	not read	#VALUE!	#VALUE!
June 9, 2022	not read	#VALUE!	#VALUE!	not read	#VALUE!	#VALUE!
July 14, 2022	not read	#VALUE!	#VALUE!	not read	#VALUE!	#VALUE!
August 11, 2022	not read	#VALUE!	#VALUE!	not read	#VALUE!	#VALUE!
September 8, 2022	not read	#VALUE!	#VALUE!	not read	#VALUE!	#VALUE!
October 11, 2022	not read	#VALUE!	#VALUE!	not read	#VALUE!	#VALUE!
November 10, 2022	not read	#VALUE!	#VALUE!	not read	#VALUE!	#VALUE!
December 8, 2022	not read	#VALUE!	#VALUE!	not read	#VALUE!	#VALUE!
January 12, 2023	not read	#VALUE!	#VALUE!	not read	#VALUE!	#VALUE!
February 9, 2023	not read	#VALUE!	#VALUE!	not read	#VALUE!	#VALUE!
March 9, 2023	not read	#VALUE!	#VALUE!	not read	#VALUE!	#VALUE!
April 25, 2023	not read	#VALUE!	#VALUE!	not read	#VALUE!	#VALUE!
May 11, 2023	not read	#VALUE!	#VALUE!	not read	#VALUE!	#VALUE!
June 8, 2023	not read	#VALUE!	#VALUE!	not read	#VALUE!	#VALUE!

Well Readings with a "not read" indicate the well has been damaged or removed due to its location being in conflict with the slurry wall construction

Derr Pit Monitor Well Readings

Well Designation	MW-3			MW-4			MW-6		
Top of Well (ft)	4631.38			4631.63			4633.36		
Ground Elevation (ft)	4629.04			4629.27			4631.13		
Date	Depth to Groundwater from Top of Well (ft)	Depth to Groundwater from Ground (ft)	Elevation of Groundwater (ft)	Depth to Groundwater from Top of Well (ft)	Depth to Groundwater from Ground (ft)	Elevation of Groundwater (ft)	Depth to Groundwater from Top of Well (ft)	Depth to Groundwater from Ground (ft)	Elevation of Groundwater (ft)
September 26, 2018	17.87	15.53	4613.51	15.73	13.37	4615.90	15.31	13.08	4618.05
October 26, 2018	17.67	15.33	4613.71	15.38	13.02	4616.25	14.89	12.66	4618.47
November 20, 2018	17.63	15.29	4613.75	15.34	12.98	4616.29	14.78	12.55	4618.58
December 18, 2018	17.63	15.29	4613.75	15.34	12.98	4616.29	14.78	12.55	4618.58
January 17, 2019	18.16	15.82	4613.22	15.74	13.38	4615.89	15.13	12.90	4618.23
February 12, 2019	18.58	16.24	4612.80	16.11	13.75	4615.52	15.49	13.26	4617.87
March 7, 2019	18.79	16.45	4612.59	25.46	23.10	4606.17	15.74	13.51	4617.62
April 22, 2019	19.46	17.12	4611.92	17.02	14.66	4614.61	16.34	14.11	4617.02
May 14, 2019	20.22	17.88	4611.16	18.63	16.27	4613.00	17.63	15.40	4615.73
June 21, 2019	20.65	18.31	4610.73	20.40	18.04	4611.23	18.55	16.32	4614.81
July 24, 2019	20.92	18.58	4610.46	20.49	18.13	4611.14	18.61	16.38	4614.75
August 21, 2019	21.28	18.94	4610.10	20.63	18.27	4611.00	18.95	16.72	4614.41
September 17, 2019	22.57	20.23	4608.81	22.74	20.38	4608.89	19.54	17.31	4613.82
October 17, 2019	22.36	20.02	4609.02	22.27	19.91	4609.36	20.00	17.77	4613.36
November 13, 2019	23.28	20.94	4608.10	23.18	20.82	4608.45	20.30	18.07	4613.06
December 10, 2019	23.32	20.98	4608.06	23.07	20.71	4608.56	20.28	18.05	4613.08
January 9, 2020	23.63	21.29	4607.75	23.25	20.89	4608.38	20.48	18.25	4612.88
February 12, 2020	25.82	23.48	4605.56	25.90	23.54	4605.73	21.77	19.54	4611.59
March 12, 2020	22.30	19.96	4609.08	21.05	18.69	4610.58	19.72	17.49	4613.64
April 9, 2020	20.65	18.31	4610.73	19.32	16.96	4612.31	18.00	15.77	4615.36
May 14, 2020	20.40	18.06	4610.98	19.03	16.67	4612.60	17.72	15.49	4615.64
June 11, 2020	20.41	18.07	4610.97	19.28	16.92	4612.35	17.52	15.29	4615.84
July 9, 2020	19.84	17.50	4611.54	not read	#VALUE!	#VALUE!	17.23	15.00	4616.13
August 13, 2020	21.03	18.69	4610.35	not read	#VALUE!	#VALUE!	18.62	16.39	4614.74
September 10, 2020	20.43	18.09	4610.95	not read	#VALUE!	#VALUE!	17.95	15.72	4615.41
October 8, 2020	20.39	18.05	4610.99	not read	#VALUE!	#VALUE!	17.54	15.31	4615.82
November 12, 2020	23.15	20.81	4608.23	not read	#VALUE!	#VALUE!	18.26	16.03	4615.10
December 10, 2020	23.77	21.43	4607.61	not read	#VALUE!	#VALUE!	not read	#VALUE!	#VALUE!
January 14, 2021	23.72	21.38	4607.66	not read	#VALUE!	#VALUE!	not read	#VALUE!	#VALUE!
February 12, 2021	24.02	21.68	4607.36	not read	#VALUE!	#VALUE!	not read	#VALUE!	#VALUE!
March 11, 2021	22.42	20.08	4608.96	not read	#VALUE!	#VALUE!	not read	#VALUE!	#VALUE!
April 8, 2021	22.90	20.56	4608.48	not read	#VALUE!	#VALUE!	not read	#VALUE!	#VALUE!
May 13, 2021	22.00	19.66	4609.38	not read	#VALUE!	#VALUE!	not read	#VALUE!	#VALUE!
June 10, 2021	20.30	17.96	4611.08	not read	#VALUE!	#VALUE!	not read	#VALUE!	#VALUE!
July 8, 2021	21.00	18.66	4610.38	not read	#VALUE!	#VALUE!	not read	#VALUE!	#VALUE!
August 12, 2021	20.68	18.34	4610.70	not read	#VALUE!	#VALUE!	not read	#VALUE!	#VALUE!
September 9, 2021	22.71	20.37	4608.67	not read	#VALUE!	#VALUE!	not read	#VALUE!	#VALUE!
October 14, 2021	23.00	20.66	4608.38	not read	#VALUE!	#VALUE!	not read	#VALUE!	#VALUE!
November 12, 2021	22.85	20.51	4608.53	not read	#VALUE!	#VALUE!	not read	#VALUE!	#VALUE!
December 9, 2021	23.13	20.79	4608.25	not read	#VALUE!	#VALUE!	not read	#VALUE!	#VALUE!
January 13, 2022	23.22	20.88	4608.16	not read	#VALUE!	#VALUE!	not read	#VALUE!	#VALUE!
February 9, 2022	23.59	21.25	4607.79	not read	#VALUE!	#VALUE!	not read	#VALUE!	#VALUE!
March 11, 2022	23.60	21.26	4607.78	not read	#VALUE!	#VALUE!	not read	#VALUE!	#VALUE!
April 14, 2022	23.95	21.61	4607.43	not read	#VALUE!	#VALUE!	not read	#VALUE!	#VALUE!
May 17, 2022	22.28	19.94	4609.10	not read	#VALUE!	#VALUE!	not read	#VALUE!	#VALUE!
June 9, 2022	21.71	19.37	4609.67	not read	#VALUE!	#VALUE!	not read	#VALUE!	#VALUE!
July 14, 2022	22.18	19.84	4609.20	not read	#VALUE!	#VALUE!	not read	#VALUE!	#VALUE!
August 11, 2022	21.71	19.37	4609.67	not read	#VALUE!	#VALUE!	not read	#VALUE!	#VALUE!
September 8, 2022	22.41	20.07	4608.97	not read	#VALUE!	#VALUE!	not read	#VALUE!	#VALUE!
October 11, 2022	22.25	19.91	4609.13	not read	#VALUE!	#VALUE!	not read	#VALUE!	#VALUE!
November 10, 2022	22.65	20.31	4608.73	not read	#VALUE!	#VALUE!	not read	#VALUE!	#VALUE!
December 8, 2022	22.54	20.20	4608.84	not read	#VALUE!	#VALUE!	not read	#VALUE!	#VALUE!
January 12, 2023	23.39	21.05	4607.99	not read	#VALUE!	#VALUE!	not read	#VALUE!	#VALUE!
February 9, 2023	23.75	21.41	4607.63	not read	#VALUE!	#VALUE!	not read	#VALUE!	#VALUE!
March 9, 2023	24.05	21.71	4607.33	not read	#VALUE!	#VALUE!	not read	#VALUE!	#VALUE!
April 25, 2023	24.31	21.97	4607.07	not read	#VALUE!	#VALUE!	not read	#VALUE!	#VALUE!
May 11, 2023	22.61	20.27	4608.77	not read	#VALUE!	#VALUE!	not read	#VALUE!	#VALUE!
June 8, 2023	21.70	19.36	4609.68	not read	#VALUE!	#VALUE!	not read	#VALUE!	#VALUE!

Well Readings with a "not read" indicate the well has been damaged or removed due to its location being in conflict with the slurry wall construction

Derr Pit Monitor Well Readings

Well Designation	MW-7			MW-8			MW-9		
Top of Well (ft)	4635.60			4635.24			4634.02		
Ground Elevation (ft)	4633.04			4632.76			4631.72		
Date	Depth to Groundwater from Top of Well (ft)	Depth to Groundwater from Ground (ft)	Elevation of Groundwater (ft)	Depth to Groundwater from Top of Well (ft)	Depth to Groundwater from Ground (ft)	Elevation of Groundwater (ft)	Depth to Groundwater from Top of Well (ft)	Depth to Groundwater from Ground (ft)	Elevation of Groundwater (ft)
September 26, 2018	not read	#VALUE!	#VALUE!	18.07	15.59	4617.17	15.74	13.44	4618.28
October 26, 2018	16.57	14.01	4619.03	17.79	15.31	4617.45	15.32	13.02	4618.70
November 20, 2018	16.43	13.87	4619.17	17.71	15.23	4617.53	15.21	12.91	4618.81
December 18, 2018	16.43	13.87	4619.17	17.71	15.23	4617.53	15.21	12.91	4618.81
January 17, 2019	16.75	14.19	4618.85	18.09	15.61	4617.15	15.56	13.26	4618.46
February 12, 2019	17.11	14.55	4618.49	18.44	15.96	4616.80	15.92	13.62	4618.10
March 7, 2019	17.34	14.78	4618.26	18.65	16.17	4616.59	16.13	13.83	4617.89
April 22, 2019	17.91	15.35	4617.69	19.27	16.79	4615.97	16.75	14.45	4617.27
May 14, 2019	18.71	16.15	4616.89	19.91	17.43	4615.33	25.56	23.26	4608.46
June 21, 2019	19.42	16.86	4616.18	20.73	18.25	4614.51	18.53	16.23	4615.49
July 24, 2019	19.42	16.86	4616.18	20.90	18.42	4614.34	18.77	16.47	4615.25
August 21, 2019	19.85	17.29	4615.75	21.41	18.93	4613.83	19.16	16.86	4614.86
September 17, 2019	20.38	17.82	4615.22	22.27	19.79	4612.97	19.75	17.45	4614.27
October 17, 2019	20.71	18.15	4614.89	22.51	20.03	4612.73	19.96	17.66	4614.06
November 13, 2019	21.05	18.49	4614.55	23.01	20.53	4612.23	20.28	17.98	4613.74
December 10, 2019	21.01	18.45	4614.59	22.97	20.49	4612.27	20.26	17.96	4613.76
January 9, 2020	21.23	18.67	4614.37	23.21	20.73	4612.03	20.50	18.20	4613.52
February 12, 2020	22.31	19.75	4613.29	24.46	21.98	4610.78	21.70	19.40	4612.32
March 12, 2020	20.67	18.11	4614.93	22.20	19.72	4613.04	19.75	17.45	4614.27
April 9, 2020	19.53	16.97	4616.07	20.78	18.30	4614.46	18.41	16.11	4615.61
May 14, 2020	19.12	16.56	4616.48	20.43	17.95	4614.81	18.02	15.72	4616.00
June 11, 2020	18.82	16.26	4616.78	20.29	17.81	4614.95	17.79	15.49	4616.23
July 9, 2020	18.54	15.98	4617.06	19.88	17.40	4615.36	17.56	15.26	4616.46
August 13, 2020	20.16	17.60	4615.44	21.99	19.51	4613.25	19.16	16.86	4614.86
September 10, 2020	19.30	16.74	4616.30	20.58	18.10	4614.66	18.29	15.99	4615.73
October 8, 2020	18.95	16.39	4616.65	20.30	17.82	4614.94	Broken not read	#VALUE!	#VALUE!
November 12, 2020	19.80	17.24	4615.80	21.52	19.04	4613.72	Broken not read	#VALUE!	#VALUE!
December 10, 2020	19.43	16.87	4616.17	not read	#VALUE!	#VALUE!	Broken not read	#VALUE!	#VALUE!
January 14, 2021	20.47	17.91	4615.13	not read	#VALUE!	#VALUE!	Broken not read	#VALUE!	#VALUE!
February 12, 2021	22.06	19.50	4613.54	not read	#VALUE!	#VALUE!	Broken not read	#VALUE!	#VALUE!
March 11, 2021	23.51	20.95	4612.09	not read	#VALUE!	#VALUE!	Broken not read	#VALUE!	#VALUE!
April 8, 2021	24.06	21.50	4611.54	not read	#VALUE!	#VALUE!	Broken not read	#VALUE!	#VALUE!
May 13, 2021	23.79	21.23	4611.81	not read	#VALUE!	#VALUE!	Broken not read	#VALUE!	#VALUE!
June 10, 2021	23.86	21.30	4611.74	not read	#VALUE!	#VALUE!	Broken not read	#VALUE!	#VALUE!
July 8, 2021	22.85	20.29	4612.75	not read	#VALUE!	#VALUE!	Broken not read	#VALUE!	#VALUE!
August 12, 2021	23.40	20.84	4612.20	not read	#VALUE!	#VALUE!	Broken not read	#VALUE!	#VALUE!
September 9, 2021	16.19	13.63	4619.41	not read	#VALUE!	#VALUE!	Broken not read	#VALUE!	#VALUE!
October 14, 2021	15.10	12.54	4620.50	not read	#VALUE!	#VALUE!	Broken not read	#VALUE!	#VALUE!
November 12, 2021	14.70	12.14	4620.90	not read	#VALUE!	#VALUE!	Broken not read	#VALUE!	#VALUE!
December 9, 2021	14.47	11.91	4621.13	not read	#VALUE!	#VALUE!	Broken not read	#VALUE!	#VALUE!
January 13, 2022	14.47	11.91	4621.13	not read	#VALUE!	#VALUE!	Broken not read	#VALUE!	#VALUE!
February 9, 2022	14.65	12.09	4620.95	not read	#VALUE!	#VALUE!	Broken not read	#VALUE!	#VALUE!
March 11, 2022	14.72	12.16	4620.88	not read	#VALUE!	#VALUE!	Broken not read	#VALUE!	#VALUE!
April 14, 2022	15.00	12.44	4620.60	not read	#VALUE!	#VALUE!	Broken not read	#VALUE!	#VALUE!
May 17, 2022	15.25	12.69	4620.35	not read	#VALUE!	#VALUE!	Broken not read	#VALUE!	#VALUE!
June 9, 2022	14.91	12.35	4620.69	not read	#VALUE!	#VALUE!	Broken not read	#VALUE!	#VALUE!
July 14, 2022	14.85	12.29	4620.75	not read	#VALUE!	#VALUE!	Broken not read	#VALUE!	#VALUE!
August 11, 2022	15.40	12.84	4620.20	not read	#VALUE!	#VALUE!	Broken not read	#VALUE!	#VALUE!
September 8, 2022	15.31	12.75	4620.29	not read	#VALUE!	#VALUE!	Broken not read	#VALUE!	#VALUE!
October 11, 2022	14.59	12.03	4621.01	not read	#VALUE!	#VALUE!	Broken not read	#VALUE!	#VALUE!
November 10, 2022	14.38	11.82	4621.22	not read	#VALUE!	#VALUE!	Broken not read	#VALUE!	#VALUE!
December 8, 2022	14.30	11.74	4621.30	not read	#VALUE!	#VALUE!	Broken not read	#VALUE!	#VALUE!
January 12, 2023	14.67	12.11	4620.93	not read	#VALUE!	#VALUE!	Broken not read	#VALUE!	#VALUE!
February 9, 2023	14.95	12.39	4620.65	not read	#VALUE!	#VALUE!	Broken not read	#VALUE!	#VALUE!
March 9, 2023	15.15	12.59	4620.45	not read	#VALUE!	#VALUE!	Broken not read	#VALUE!	#VALUE!
April 25, 2023	16.60	14.04	4619.00	not read	#VALUE!	#VALUE!	Broken not read	#VALUE!	#VALUE!
May 11, 2023	15.72	13.16	4619.88	not read	#VALUE!	#VALUE!	Broken not read	#VALUE!	#VALUE!
June 8, 2023	14.98	12.42	4620.62	not read	#VALUE!	#VALUE!	Broken not read	#VALUE!	#VALUE!

Well Readings with a "not read" indicate the well has been damaged or removed due to its location being in conflict with the slurry wall construction

Derr Pit Monitor Well Readings

Well Designation	MW-10			MW-11			MW-12		
Top of Well (ft)	4632.11			4630.46			4631.20		
Ground Elevation (ft)	4630.34			4628.05			4629.03		
Date	Depth to Groundwater from Top of Well (ft)	Depth to Groundwater from Ground (ft)	Elevation of Groundwater (ft)	Depth to Groundwater from Top of Well (ft)	Depth to Groundwater from Ground (ft)	Elevation of Groundwater (ft)	Depth to Groundwater from Top of Well (ft)	Depth to Groundwater from Ground (ft)	Elevation of Groundwater (ft)
September 26, 2018	14.75	12.98	4617.36	14.21	11.80	4616.25	16.58	14.41	4614.62
October 26, 2018	13.89	12.12	4618.22	13.89	11.48	4616.57	16.51	14.34	4614.69
November 20, 2018	14.25	12.48	4617.86	13.80	11.39	4616.66	16.49	14.32	4614.71
December 18, 2018	14.25	12.48	4617.86	13.80	11.39	4616.66	16.49	14.32	4614.71
January 17, 2019	14.60	12.83	4617.51	14.22	11.81	4616.24	16.95	14.78	4614.25
February 12, 2019	14.98	13.21	4617.13	14.58	12.17	4615.88	17.33	15.16	4613.87
March 7, 2019	24.30	22.53	4607.81	14.81	12.40	4615.65	17.54	15.37	4613.66
April 22, 2019	15.85	14.08	4616.26	15.55	13.14	4614.91	18.03	15.86	4613.17
May 14, 2019	26.60	24.83	4605.51	16.70	14.29	4613.76	27.43	25.26	4603.77
June 21, 2019	18.67	16.90	4613.44	17.87	15.46	4612.59	19.09	16.92	4612.11
July 24, 2019	18.79	17.02	4613.32	18.04	15.63	4612.42	19.62	17.45	4611.58
August 21, 2019	19.10	17.33	4613.01	18.45	16.04	4612.01	20.23	18.06	4610.97
September 17, 2019	19.87	18.10	4612.24	19.61	17.20	4610.85	21.61	19.44	4609.59
October 17, 2019	20.48	18.71	4611.63	19.79	17.38	4610.67	21.31	19.14	4609.89
November 13, 2019	20.82	19.05	4611.29	20.36	17.95	4610.10	22.43	20.26	4608.77
December 10, 2019	20.78	19.01	4611.33	20.30	17.89	4610.16	22.41	20.24	4608.79
January 9, 2020	20.95	19.18	4611.16	20.52	18.11	4609.94	22.67	20.50	4608.53
February 12, 2020	22.46	20.69	4609.65	22.41	20.00	4608.05	24.09	21.92	4607.11
March 12, 2020	19.95	18.18	4612.16	19.04	16.63	4611.42	20.78	18.61	4610.42
April 9, 2020	17.02	15.25	4615.09	17.22	14.81	4613.24	19.22	17.05	4611.98
May 14, 2020	17.30	15.53	4614.81	not read	#VALUE!	#VALUE!	not read	#VALUE!	#VALUE!
June 11, 2020	17.22	15.45	4614.89	not read	#VALUE!	#VALUE!	not read	#VALUE!	#VALUE!
July 9, 2020	not read	#VALUE!	#VALUE!	not read	#VALUE!	#VALUE!	not read	#VALUE!	#VALUE!
August 13, 2020	not read	#VALUE!	#VALUE!	not read	#VALUE!	#VALUE!	not read	#VALUE!	#VALUE!
September 10, 2020	not read	#VALUE!	#VALUE!	not read	#VALUE!	#VALUE!	not read	#VALUE!	#VALUE!
October 8, 2020	not read	#VALUE!	#VALUE!	not read	#VALUE!	#VALUE!	not read	#VALUE!	#VALUE!
November 12, 2020	not read	#VALUE!	#VALUE!	not read	#VALUE!	#VALUE!	not read	#VALUE!	#VALUE!
December 10, 2020	not read	#VALUE!	#VALUE!	not read	#VALUE!	#VALUE!	not read	#VALUE!	#VALUE!
January 14, 2021	not read	#VALUE!	#VALUE!	not read	#VALUE!	#VALUE!	not read	#VALUE!	#VALUE!
February 12, 2021	not read	#VALUE!	#VALUE!	not read	#VALUE!	#VALUE!	not read	#VALUE!	#VALUE!
March 11, 2021	not read	#VALUE!	#VALUE!	not read	#VALUE!	#VALUE!	not read	#VALUE!	#VALUE!
April 8, 2021	not read	#VALUE!	#VALUE!	not read	#VALUE!	#VALUE!	not read	#VALUE!	#VALUE!
May 13, 2021	not read	#VALUE!	#VALUE!	not read	#VALUE!	#VALUE!	not read	#VALUE!	#VALUE!
June 10, 2021	not read	#VALUE!	#VALUE!	not read	#VALUE!	#VALUE!	not read	#VALUE!	#VALUE!
July 8, 2021	not read	#VALUE!	#VALUE!	not read	#VALUE!	#VALUE!	not read	#VALUE!	#VALUE!
August 12, 2021	not read	#VALUE!	#VALUE!	not read	#VALUE!	#VALUE!	not read	#VALUE!	#VALUE!
September 9, 2021	not read	#VALUE!	#VALUE!	33.82	31.41	4596.64	not read	#VALUE!	#VALUE!
October 14, 2021	not read	#VALUE!	#VALUE!	35.70	33.29	4594.76	not read	#VALUE!	#VALUE!
November 12, 2021	not read	#VALUE!	#VALUE!	35.92	33.51	4594.54	not read	#VALUE!	#VALUE!
December 9, 2021	not read	#VALUE!	#VALUE!	35.80	33.39	4594.66	not read	#VALUE!	#VALUE!
January 13, 2022	not read	#VALUE!	#VALUE!	35.80	33.39	4594.66	not read	#VALUE!	#VALUE!
February 9, 2022	not read	#VALUE!	#VALUE!	35.61	33.20	4594.85	not read	#VALUE!	#VALUE!
March 11, 2022	not read	#VALUE!	#VALUE!	not read	#VALUE!	#VALUE!	not read	#VALUE!	#VALUE!
April 14, 2022	not read	#VALUE!	#VALUE!	not read	#VALUE!	#VALUE!	not read	#VALUE!	#VALUE!
May 17, 2022	not read	#VALUE!	#VALUE!	not read	#VALUE!	#VALUE!	not read	#VALUE!	#VALUE!
June 9, 2022	not read	#VALUE!	#VALUE!	not read	#VALUE!	#VALUE!	not read	#VALUE!	#VALUE!
July 14, 2022	not read	#VALUE!	#VALUE!	not read	#VALUE!	#VALUE!	not read	#VALUE!	#VALUE!
August 11, 2022	not read	#VALUE!	#VALUE!	not read	#VALUE!	#VALUE!	not read	#VALUE!	#VALUE!
September 8, 2022	not read	#VALUE!	#VALUE!	not read	#VALUE!	#VALUE!	not read	#VALUE!	#VALUE!
October 11, 2022	not read	#VALUE!	#VALUE!	not read	#VALUE!	#VALUE!	not read	#VALUE!	#VALUE!
November 10, 2022	not read	#VALUE!	#VALUE!	not read	#VALUE!	#VALUE!	not read	#VALUE!	#VALUE!
December 8, 2022	not read	#VALUE!	#VALUE!	not read	#VALUE!	#VALUE!	not read	#VALUE!	#VALUE!
January 12, 2023	not read	#VALUE!	#VALUE!	not read	#VALUE!	#VALUE!	not read	#VALUE!	#VALUE!
February 9, 2023	not read	#VALUE!	#VALUE!	not read	#VALUE!	#VALUE!	not read	#VALUE!	#VALUE!
March 9, 2023	not read	#VALUE!	#VALUE!	not read	#VALUE!	#VALUE!	not read	#VALUE!	#VALUE!
April 25, 2023	not read	#VALUE!	#VALUE!	not read	#VALUE!	#VALUE!	not read	#VALUE!	#VALUE!
May 11, 2023	not read	#VALUE!	#VALUE!	not read	#VALUE!	#VALUE!	not read	#VALUE!	#VALUE!
June 8, 2023	not read	#VALUE!	#VALUE!	not read	#VALUE!	#VALUE!	not read	#VALUE!	#VALUE!

Well Readings with a "not read" indicate the well has been damaged or removed due to its location being in conflict with the slurry wall construction

Derr Pit Monitor Well Readings

Well Designation	MW-13			MW-14			MW-15		
Top of Well (ft)	4631.38			4660.59			4660.36		
Ground Elevation (ft)	4628.59			4659.55			4657.92		
Date	Depth to Groundwater from Top of Well (ft)	Depth to Groundwater from Ground (ft)	Elevation of Groundwater (ft)	Depth to Groundwater from Top of Well (ft)	Depth to Groundwater from Ground (ft)	Elevation of Groundwater (ft)	Depth to Groundwater from Top of Well (ft)	Depth to Groundwater from Ground (ft)	Elevation of Groundwater (ft)
September 26, 2018	17.42	14.63	4613.96	49.19	48.15	4611.40	41.59	39.15	4618.77
October 26, 2018	17.21	14.42	4614.17	45.97	44.93	4614.62	41.11	38.67	4619.25
November 20, 2018	17.18	14.39	4614.20	45.90	44.86	4614.69	43.01	40.57	4617.35
December 18, 2018	26.48	23.69	4604.90	45.90	44.86	4614.69	43.01	40.57	4617.35
January 17, 2019	17.70	14.91	4613.68	46.37	45.33	4614.22	41.37	38.93	4618.99
February 12, 2019	18.08	15.29	4613.30	46.75	45.71	4613.84	41.71	39.27	4618.65
March 7, 2019	18.32	15.53	4613.06	46.99	45.95	4613.60	51.07	48.63	4609.29
April 22, 2019	19.18	16.39	4612.20	47.61	46.57	4612.98	42.55	40.11	4617.81
May 14, 2019	29.09	26.30	4602.29	48.44	47.40	4612.15	43.49	41.05	4616.87
June 21, 2019	20.87	18.08	4610.51	49.02	47.98	4611.57	43.61	41.17	4616.75
July 24, 2019	21.17	18.38	4610.21	50.15	49.11	4610.44	44.31	41.87	4616.05
August 21, 2019	21.39	18.60	4609.99	49.56	48.52	4611.03	44.71	42.27	4615.65
September 17, 2019	22.97	20.18	4608.41	50.66	49.62	4609.93	45.08	42.64	4615.28
October 17, 2019	22.55	19.76	4608.83	50.65	49.61	4609.94	45.40	42.96	4614.96
November 13, 2019	23.62	20.83	4607.76	50.65	49.61	4609.94	45.64	43.20	4614.72
December 10, 2019	23.62	20.83	4607.76	51.25	50.21	4609.34	45.57	43.13	4614.79
January 9, 2020	23.87	21.08	4607.51	51.59	50.55	4609.00	45.63	43.19	4614.73
February 12, 2020	25.89	23.10	4605.49	53.60	52.56	4606.99	46.98	44.54	4613.38
March 12, 2020	21.90	19.11	4609.48	50.60	49.56	4609.99	45.42	42.98	4614.94
April 9, 2020	20.12	17.33	4611.26	49.21	48.17	4611.38	44.25	41.81	4616.11
May 14, 2020	not read	#VALUE!	#VALUE!	48.82	47.78	4611.77	43.85	41.41	4616.51
June 11, 2020	not read	#VALUE!	#VALUE!	48.69	47.65	4611.90	43.53	41.09	4616.83
July 9, 2020	not read	#VALUE!	#VALUE!	48.25	47.21	4612.34	43.38	40.94	4616.98
August 13, 2020	not read	#VALUE!	#VALUE!	49.29	48.25	4611.30	44.61	42.17	4615.75
September 10, 2020	not read	#VALUE!	#VALUE!	48.91	47.87	4611.68	44.10	41.66	4616.26
October 8, 2020	not read	#VALUE!	#VALUE!	48.68	47.64	4611.91	43.53	41.09	4616.83
November 12, 2020	not read	#VALUE!	#VALUE!	49.63	48.59	4610.96	43.72	41.28	4616.64
December 10, 2020	not read	#VALUE!	#VALUE!	49.74	48.70	4610.85	43.13	40.69	4617.23
January 14, 2021	not read	#VALUE!	#VALUE!	49.26	48.22	4611.33	42.31	39.87	4618.05
February 12, 2021	not read	#VALUE!	#VALUE!	49.45	48.41	4611.14	42.69	40.25	4617.67
March 11, 2021	not read	#VALUE!	#VALUE!	48.89	47.85	4611.70	43.10	40.66	4617.26
April 8, 2021	not read	#VALUE!	#VALUE!	49.25	48.21	4611.34	43.44	41.00	4616.92
May 13, 2021	not read	#VALUE!	#VALUE!	49.11	48.07	4611.48	43.70	41.26	4616.66
June 10, 2021	not read	#VALUE!	#VALUE!	48.09	47.05	4612.50	43.29	40.85	4617.07
July 8, 2021	not read	#VALUE!	#VALUE!	47.53	46.49	4613.06	42.70	40.26	4617.66
August 12, 2021	not read	#VALUE!	#VALUE!	48.25	47.21	4612.34	43.50	41.06	4616.86
September 9, 2021	not read	#VALUE!	#VALUE!	49.09	48.05	4611.50	42.33	39.89	4618.03
October 14, 2021	not read	#VALUE!	#VALUE!	48.60	47.56	4611.99	42.10	39.66	4618.26
November 12, 2021	not read	#VALUE!	#VALUE!	48.56	47.52	4612.03	41.46	39.02	4618.90
December 9, 2021	not read	#VALUE!	#VALUE!	48.28	47.24	4612.31	40.28	37.84	4620.08
January 13, 2022	not read	#VALUE!	#VALUE!	48.52	47.48	4612.07	40.47	38.03	4619.89
February 9, 2022	not read	#VALUE!	#VALUE!	48.69	47.65	4611.90	40.50	38.06	4619.86
March 11, 2022	not read	#VALUE!	#VALUE!	48.77	47.73	4611.82	40.63	38.19	4619.73
April 14, 2022	not read	#VALUE!	#VALUE!	48.02	46.98	4612.57	39.97	37.53	4620.39
May 17, 2022	not read	#VALUE!	#VALUE!	47.27	46.23	4613.32	40.05	37.61	4620.31
June 9, 2022	not read	#VALUE!	#VALUE!	47.81	46.77	4612.78	40.77	38.33	4619.59
July 14, 2022	not read	#VALUE!	#VALUE!	47.13	46.09	4613.46	40.75	38.31	4619.61
August 11, 2022	not read	#VALUE!	#VALUE!	48.77	47.73	4611.82	41.51	39.07	4618.85
September 8, 2022	not read	#VALUE!	#VALUE!	48.62	47.58	4611.97	41.52	39.08	4618.84
October 11, 2022	not read	#VALUE!	#VALUE!	48.00	46.96	4612.59	40.47	38.03	4619.89
November 10, 2022	not read	#VALUE!	#VALUE!	47.97	46.93	4612.62	41.10	38.66	4619.26
December 8, 2022	not read	#VALUE!	#VALUE!	47.90	46.86	4612.69	40.11	37.67	4620.25
January 12, 2023	not read	#VALUE!	#VALUE!	48.34	47.30	4612.25	40.39	37.95	4619.97
February 9, 2023	not read	#VALUE!	#VALUE!	48.25	47.21	4612.34	40.39	37.95	4619.97
March 9, 2023	not read	#VALUE!	#VALUE!	49.00	47.96	4611.59	39.90	37.46	4620.46
April 25, 2023	not read	#VALUE!	#VALUE!	49.41	48.37	4611.18	40.40	37.96	4619.96
May 11, 2023	not read	#VALUE!	#VALUE!	48.65	47.61	4611.94	41.54	39.10	4618.82
June 8, 2023	not read	#VALUE!	#VALUE!	47.90	46.86	4612.69	41.02	38.58	4619.34

Well Readings with a "not read" indicate the well has been damaged or removed due to its location being in conflict with the slurry wall construction

Derr Pit Monitor Well Readings

Well Designation	MW-16			MW-17			MW-18		
Top of Well (ft)	4656.19			4663.63			4667.49		
Ground Elevation (ft)	4653.45			4660.53			4664.55		
Date	Depth to Groundwater from Top of Well (ft)	Depth to Groundwater from Ground (ft)	Elevation of Groundwater (ft)	Depth to Groundwater from Top of Well (ft)	Depth to Groundwater from Ground (ft)	Elevation of Groundwater (ft)	Depth to Groundwater from Top of Well (ft)	Depth to Groundwater from Ground (ft)	Elevation of Groundwater (ft)
September 26, 2018									
October 26, 2018									
November 20, 2018									
December 18, 2018									
January 17, 2019									
February 12, 2019									
March 7, 2019									
April 22, 2019									
May 14, 2019									
June 21, 2019									
July 24, 2019									
August 21, 2019	43.63	40.89	4612.56	47.00	43.90	4616.63	46.38	43.44	4621.11
September 17, 2019	44.44	41.70	4611.75	46.95	43.85	4616.68	46.52	43.58	4620.97
October 17, 2019	44.52	41.78	4611.67	46.59	43.49	4617.04	46.61	43.67	4620.88
November 13, 2019	44.87	42.13	4611.32	46.75	43.65	4616.88	46.74	43.80	4620.75
December 10, 2019	44.91	42.17	4611.28	46.80	43.70	4616.83	46.73	43.79	4620.76
January 9, 2020	45.30	42.56	4610.89	47.16	44.06	4616.47	46.95	44.01	4620.54
February 12, 2020	46.53	43.79	4609.66	47.87	44.77	4615.76	47.54	44.60	4619.95
March 12, 2020	45.22	42.48	4610.97	47.68	44.58	4615.95	47.32	44.38	4620.17
April 9, 2020	44.38	41.64	4611.81	47.31	44.21	4616.32	46.97	44.03	4620.52
May 14, 2020	43.90	41.16	4612.29	47.00	43.90	4616.63	46.63	43.69	4620.86
June 11, 2020	43.50	40.76	4612.69	46.52	43.42	4617.11	46.15	43.21	4621.34
July 9, 2020	43.33	40.59	4612.86	48.89	45.79	4614.74	46.14	43.20	4621.35
August 13, 2020	44.61	41.87	4611.58	48.41	45.31	4615.22	47.21	44.27	4620.28
September 10, 2020	44.25	41.51	4611.94	47.56	44.46	4616.07	46.85	43.91	4620.64
October 8, 2020	43.56	40.82	4612.63	46.27	43.17	4617.36	46.05	43.11	4621.44
November 12, 2020	43.85	41.11	4612.34	46.19	43.09	4617.44	46.06	43.12	4621.43
December 10, 2020	44.03	41.29	4612.16	46.22	43.12	4617.41	45.91	42.97	4621.58
January 14, 2021	43.68	40.94	4612.51	46.09	42.99	4617.54	45.67	42.73	4621.82
February 12, 2021	43.84	41.10	4612.35	46.23	43.13	4617.40	45.95	43.01	4621.54
March 11, 2021	43.65	40.91	4612.54	46.43	43.33	4617.20	46.33	43.39	4621.16
April 8, 2021	43.96	41.22	4612.23	46.69	43.59	4616.94	46.65	43.71	4620.84
May 13, 2021	43.49	40.75	4612.70	47.01	43.91	4616.62	46.87	43.93	4620.62
June 10, 2021	43.16	40.42	4613.03	46.50	43.40	4617.13	46.56	43.62	4620.93
July 8, 2021	42.71	39.97	4613.48	46.10	43.00	4617.53	46.00	43.06	4621.49
August 12, 2021	43.45	40.71	4612.74	47.70	44.60	4615.93	46.95	44.01	4620.54
September 9, 2021	43.94	41.20	4612.25	47.70	44.60	4615.93	46.28	43.34	4621.21
October 14, 2021	43.02	40.28	4613.17	45.65	42.55	4617.98	46.05	43.11	4621.44
November 12, 2021	42.59	39.85	4613.60	45.14	42.04	4618.49	45.44	42.50	4622.05
December 9, 2021	42.57	39.83	4613.62	45.00	41.90	4618.63	44.21	41.27	4623.28
January 13, 2022	42.21	39.47	4613.98	45.31	42.21	4618.32	44.46	41.52	4623.03
February 9, 2022	43.02	40.28	4613.17	45.36	42.26	4618.27	44.48	41.54	4623.01
March 11, 2022	43.15	40.41	4613.04	45.51	42.41	4618.12	44.55	41.61	4622.94
April 14, 2022	43.10	40.36	4613.09	45.76	42.66	4617.87	44.91	41.97	4622.58
May 17, 2022	42.93	40.19	4613.26	45.91	42.81	4617.72	45.19	42.25	4622.30
June 9, 2022	42.43	39.69	4613.76	45.50	42.40	4618.13	44.90	41.96	4622.59
July 14, 2022	43.24	40.50	4612.95	No Reading	#VALUE!	#VALUE!	45.18	42.24	4622.31
August 11, 2022	43.11	40.37	4613.08	No Reading	#VALUE!	#VALUE!	45.70	42.76	4621.79
September 8, 2022	43.46	40.72	4612.73	49.63	44.47	4614.00	45.49	42.55	4622.00
October 11, 2022	42.46	39.72	4613.73	47.36	42.20	4616.27	44.43	41.49	4623.06
November 10, 2022	42.28	39.54	4613.91	46.93	41.77	4616.70	44.10	41.16	4623.39
December 8, 2022	42.27	39.53	4613.92	47.03	41.87	4616.60	44.12	41.18	4623.37
January 12, 2023	42.65	39.91	4613.54	47.33	42.17	4616.30	44.40	41.46	4623.09
February 9, 2023	42.65	39.91	4613.54	47.33	42.17	4616.30	44.40	41.46	4623.09
March 9, 2023	43.30	40.56	4612.89	47.89	42.73	4615.74	44.91	41.97	4622.58
April 25, 2023	43.80	41.06	4612.39	49.41	44.25	4614.22	46.50	43.56	4620.99
May 11, 2023	43.37	40.63	4612.82	49.52	44.36	4614.11	45.73	42.79	4621.76
June 8, 2023	42.70	39.96	4613.49	48.06	42.90	4615.57	45.17	42.23	4622.32

9/8/22 MW-17 Repaired and Top of Well is at Elevation 4670.5

June 14, 2023

Mr. Dave Bliss
40738 Poudre Canyon
Bellvue, CO 80512

Dear Mr. Bliss:

AGPROfessionals' staff have been monitoring groundwater elevations on behalf of IHC Scott at your property. We perform this monitoring on the second Thursday of each month. Attached is the elevation we recorded on June 8, 2023.

Identifier	Depth to Water from Ground Surface
Bliss Irr	47.87

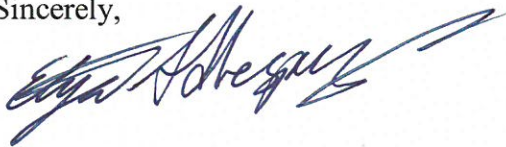
Has the 2-foot trigger point for two consecutive months been met?

☐ Yes

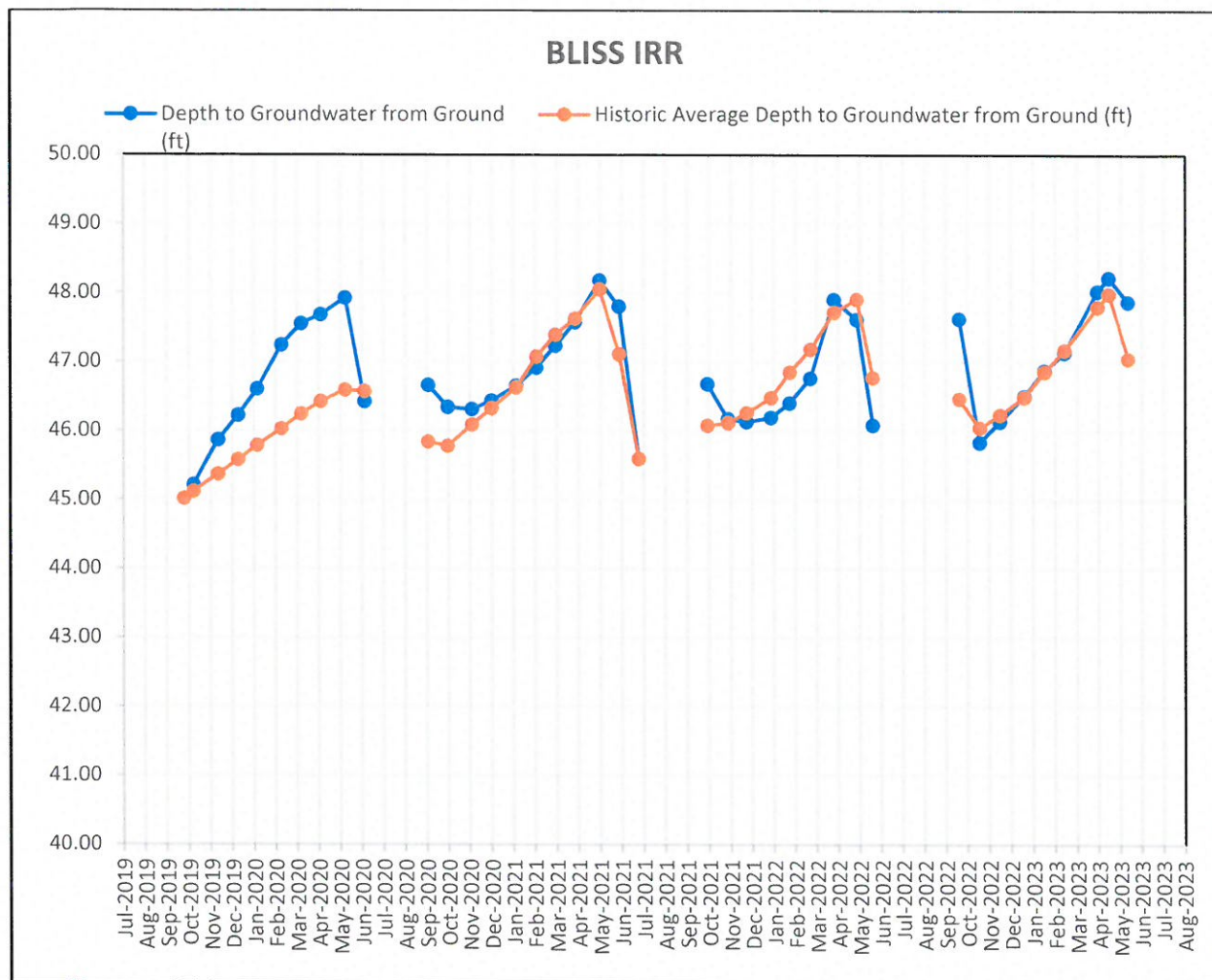
☒ No

Please find the attached table and graph representing the data collected to this date. Please do not hesitate to contact me regarding these activities.

Sincerely,



Elijah Adlesperger
Field Technician
970-571-9038



Notes:

- 1) Graph displays Depth to Groundwater (lower depth to groundwater reading means higher water table elevation).
- 2) Trigger point is described in Settlement Agreement.
- 3) Since Historical Data was not established until September 2020, a year-to-date running average was used to compute historical average. As of September 2020, the historical average is computed as described in Settlement Agreement.

Derr Pit Off-Site Well Readings

Well Designation	Bliss Irr	
	Depth to Groundwater from Ground (ft)	Trigger Level of 2 feet below Historic Average Level Met (Yes or No) Start in May 2020
Date		
April 9, 2020	47.68	
May 14, 2020	47.92	No
June 11, 2020	46.42	No
July 9, 2020		No
August 13, 2020		No
September 10, 2020	46.66	No
October 8, 2020	46.34	No
November 12, 2020	46.31	No
December 10, 2020	46.43	No
January 14, 2021	46.65	No
February 12, 2021	46.91	No
March 11, 2021	47.23	No
April 8, 2021	47.57	No
May 13, 2021	48.18	No
June 10, 2021	47.80	No
July 8, 2021	45.59	No
August 12, 2021		No
September 9, 2021		No
October 14, 2021	46.68	No
November 12, 2021	46.17	No
December 9, 2021	46.13	No
January 13, 2022	46.19	No
February 9, 2022	46.40	No
March 11, 2022	46.76	No
April 14, 2022	47.90	No
May 17, 2022	47.61	No
June 9, 2022	46.08	No
July 14, 2022		No
August 11, 2022		No
September 8, 2022		No
October 11, 2022	47.62	No
November 10, 2022	45.83	No
December 8, 2022	46.13	No
January 12, 2023	46.50	No
February 9, 2023	46.87	No
March 9, 2023	47.13	No
April 25, 2023	48.02	No
May 11, 2023	48.22	No
June 8, 2023	47.87	No

June 14, 2023

Mr. Rocky Francis
PO Box 843
Greeley, CO 80632

Dear Mr. Francis:

AGPROfessionals' staff have been monitoring groundwater elevations on behalf of IHC Scott at your property. We perform this monitoring on the second Thursday of each month. Attached is the elevation we recorded on June 8, 2023.


Identifier	Depth to Water from Ground Surface
Francis #1 Stock	12.54
Francis #2 Irr	10.84
Francis #3 Dom	13.00

Has the 2-foot trigger point for two consecutive months been met?

- ☐ Yes
☒ No

Please find the attached tables and graphs representing the data collected to this date. Please do not hesitate to contact me regarding these activities.

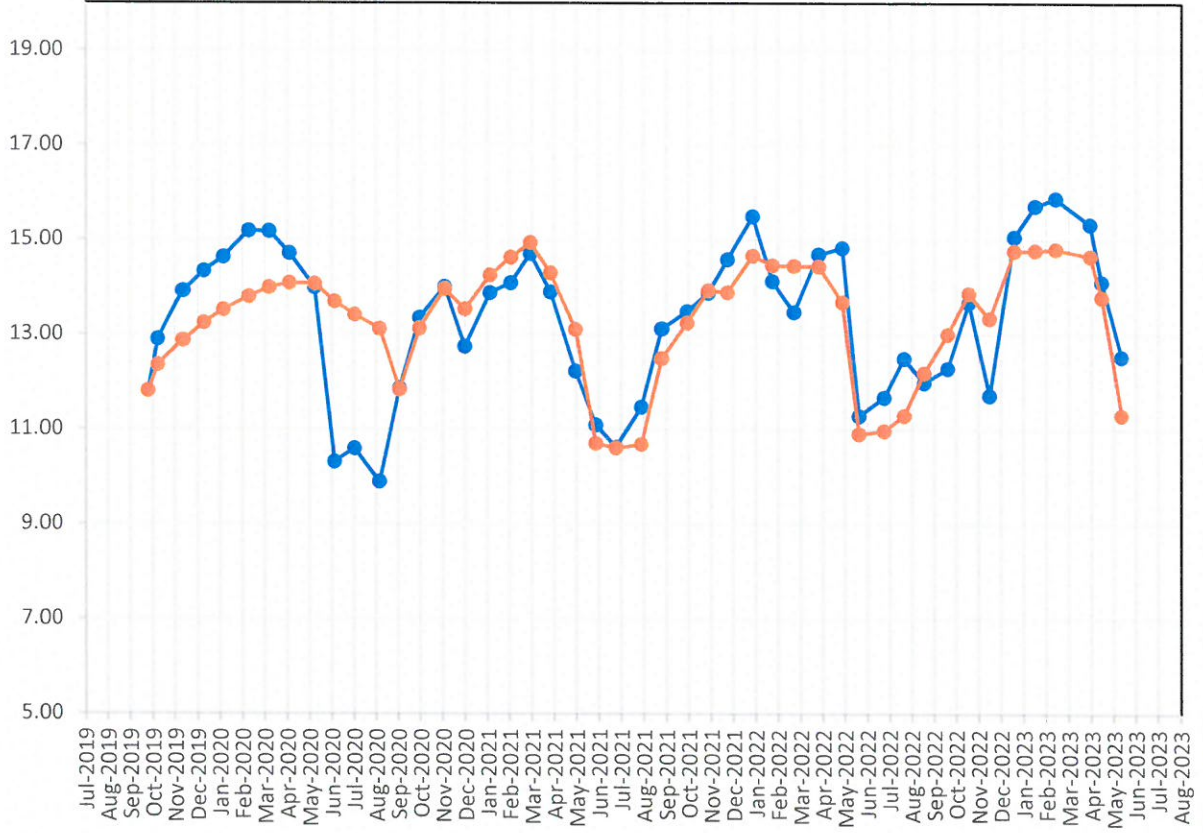
Sincerely,

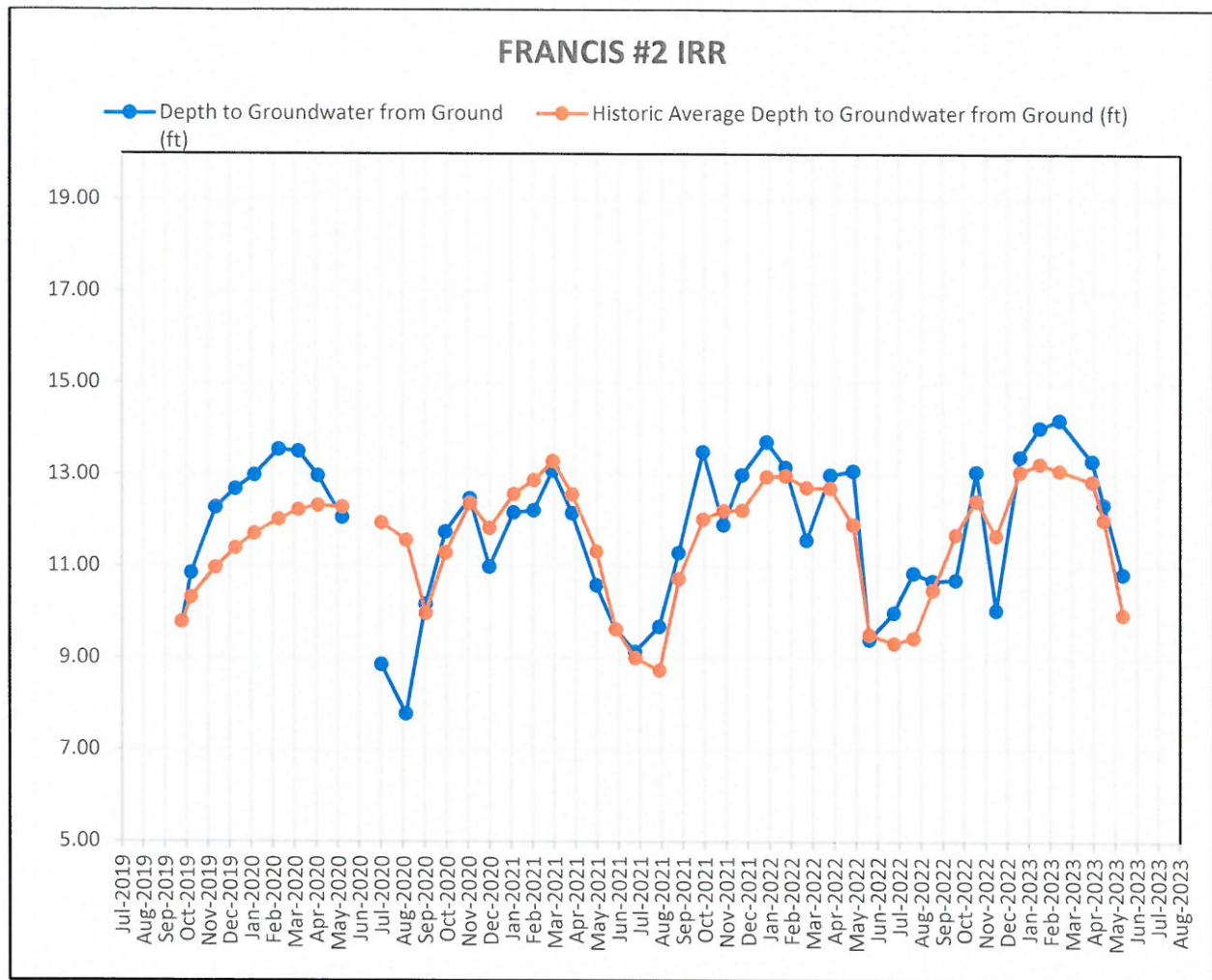


Elijah Adlesperger
Field Technician
970-571-9038

FRANCIS #1 STOCK

—●— Depth to Groundwater from Ground (ft) —●— Historic Average Depth to Groundwater from Ground (ft)



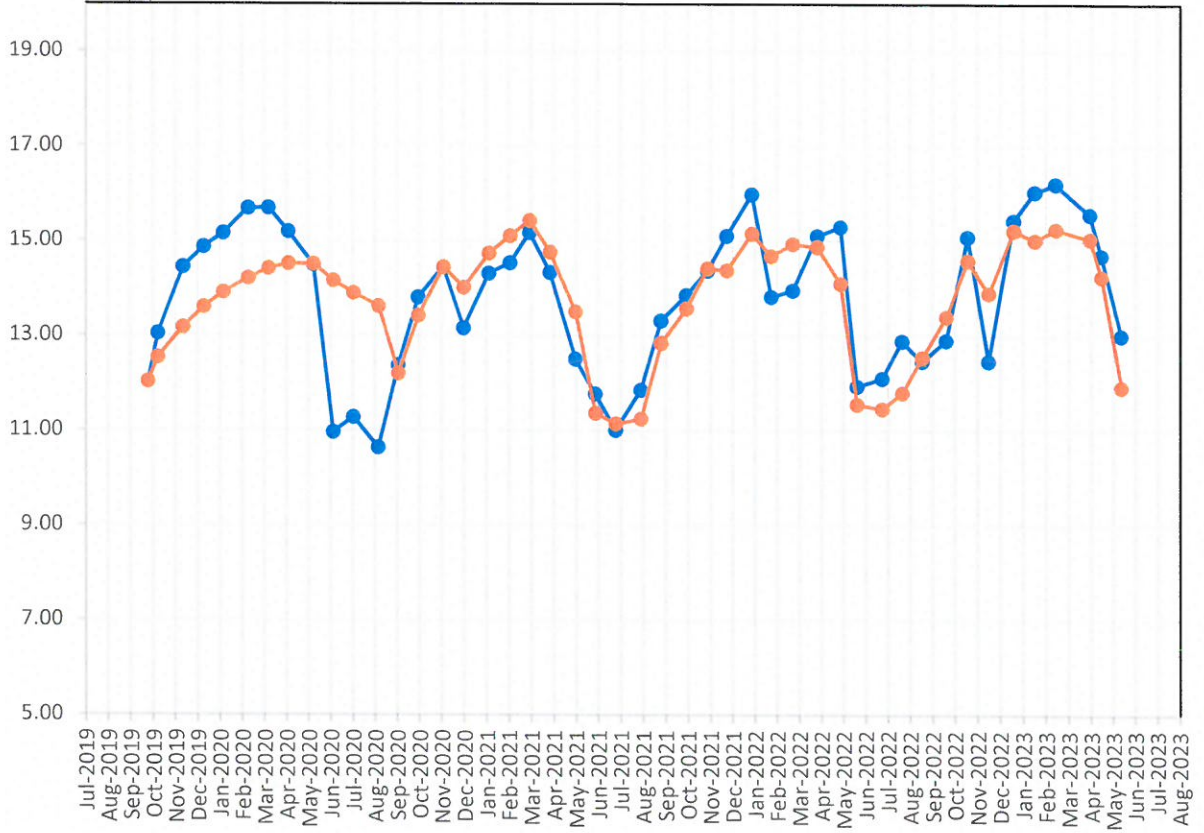


Notes:

- 1) Graph displays Depth to Groundwater (lower depth to groundwater reading means higher water table elevation).
- 2) Trigger point is described in Settlement Agreement.
- 3) Since Historical Data was not established until September 2020, a year-to-date running average was used to compute historical average. As of September 2020, the historical average is computed as described in Settlement Agreement.

FRANCIS #3 DOM

—●— Depth to Groundwater from Ground (ft) —●— Historic Average Depth to Groundwater from Ground (ft)



Derr Pit Off-Site Well Readings

Well Designation	Francis #1 Stock		Francis #2 Irr		Francis #3 Dom	
Date	Depth to Groundwater from Ground (ft)	Trigger Level of 2 feet below Historic Average Level Met (Yes or No) Start in May 2020	Depth to Groundwater from Ground (ft)	Trigger Level of 2 feet below Historic Average Level Met (Yes or No) Start in May 2020	Depth to Groundwater from Ground (ft)	Trigger Level of 2 feet below Historic Average Level Met (Yes or No) Start in May 2020
May 14, 2020	14.00	No	12.07	No	14.50	No
June 11, 2020	10.32	No		No	10.96	No
July 9, 2020	10.60	No	8.86	No	11.28	No
August 13, 2020	9.90	No	7.78	No	10.64	No
September 10, 2020	11.87	No	10.17	No	12.37	No
October 8, 2020	13.36	No	11.75	No	13.80	No
November 12, 2020	14.01	No	12.48	No	14.44	No
December 10, 2020	12.75	No	10.99	No	13.16	No
January 14, 2021	13.88	No	12.17	No	14.31	No
February 12, 2021	14.09	No	12.22	No	14.53	No
March 11, 2021	14.71	No	13.09	No	15.17	No
April 8, 2021	13.90	No	12.16	No	14.33	No
May 13, 2021	12.23	No	10.59	No	12.50	No
June 10, 2021	11.10	No	9.63	No	11.77	No
July 8, 2021	10.63	No	9.14	No	11.00	No
August 12, 2021	11.48	No	9.69	No	11.85	No
September 9, 2021	13.13	No	11.30	No	13.31	No
October 14, 2021	13.49	No	13.50	No	13.85	No
November 12, 2021	13.88	No	11.91	No	14.37	No
December 9, 2021	14.59	No	13.00	No	15.10	No
January 13, 2022	15.50	No	13.72	No	15.98	No
February 9, 2022	14.13	No	13.17	No	13.82	No
March 11, 2022	13.48	No	11.58	No	13.95	No
April 14, 2022	14.70	No	13.00	No	15.10	No
May 17, 2022	14.83	No	13.09	No	15.29	No
June 9, 2022	11.29	No	9.41	No	11.93	No
July 14, 2022	11.68	No	10.00	No	12.10	No
August 11, 2022	12.50	No	10.86	No	12.89	No
September 8, 2022	11.99	No	10.69	No	12.46	No
October 11, 2022	12.29	No	10.71	No	12.90	No
November 10, 2022	13.68	No	13.07	No	15.08	No
December 8, 2022	11.72	No	10.05	No	12.46	No
January 12, 2023	15.07	No	13.40	No	15.43	No
February 9, 2023	15.72	No	14.03	No	16.03	No
March 9, 2023	15.88	No	14.20	No	16.20	No
April 25, 2023	15.34	No	13.31	No	15.56	No
May 11, 2023	14.12	No	12.36	No	14.69	No
June 8, 2023	12.54	No	10.84	No	13.00	No

June 14, 2023

Mr. Rocky Francis
665 Balsam Ave
Greeley, CO 80631

Dear Mr. Francis:

AGPROfessionals' staff have been monitoring groundwater elevations on behalf of IHC Scott at your property. We perform this monitoring on the second Thursday of each month. Attached is the elevation we recorded on June 8, 2023.

Identifier	Depth to Water from Ground Surface
Taylor Dom	19.50

Has the 2-foot trigger point for two consecutive months been met?

☒ Yes

☐ No

A trigger level was reached for your domestic well, but a new submersible pump and motor were installed and lowered to the bottom of the well as part of the improvements to your well in January of 2020. The improvements were performed by Quality Well and Pump. Typically, well levels in the area come up when fields start irrigating and the runoff comes down the Section 3 ditch on the west side of the Loloff Pit and then turns to the east crossing Balsam Avenue just south of your property. IHC Scott/Mill Iron Mining is not dewatering and the slurry wall at the Derr Pit passed the State Engineer's requirements for the leak tests. AGPROfessionals' staff will continue to monitor your well on the second Thursday of each month.

Sincerely,



Elijah Adlesperger
Field Technician
970-571-9038

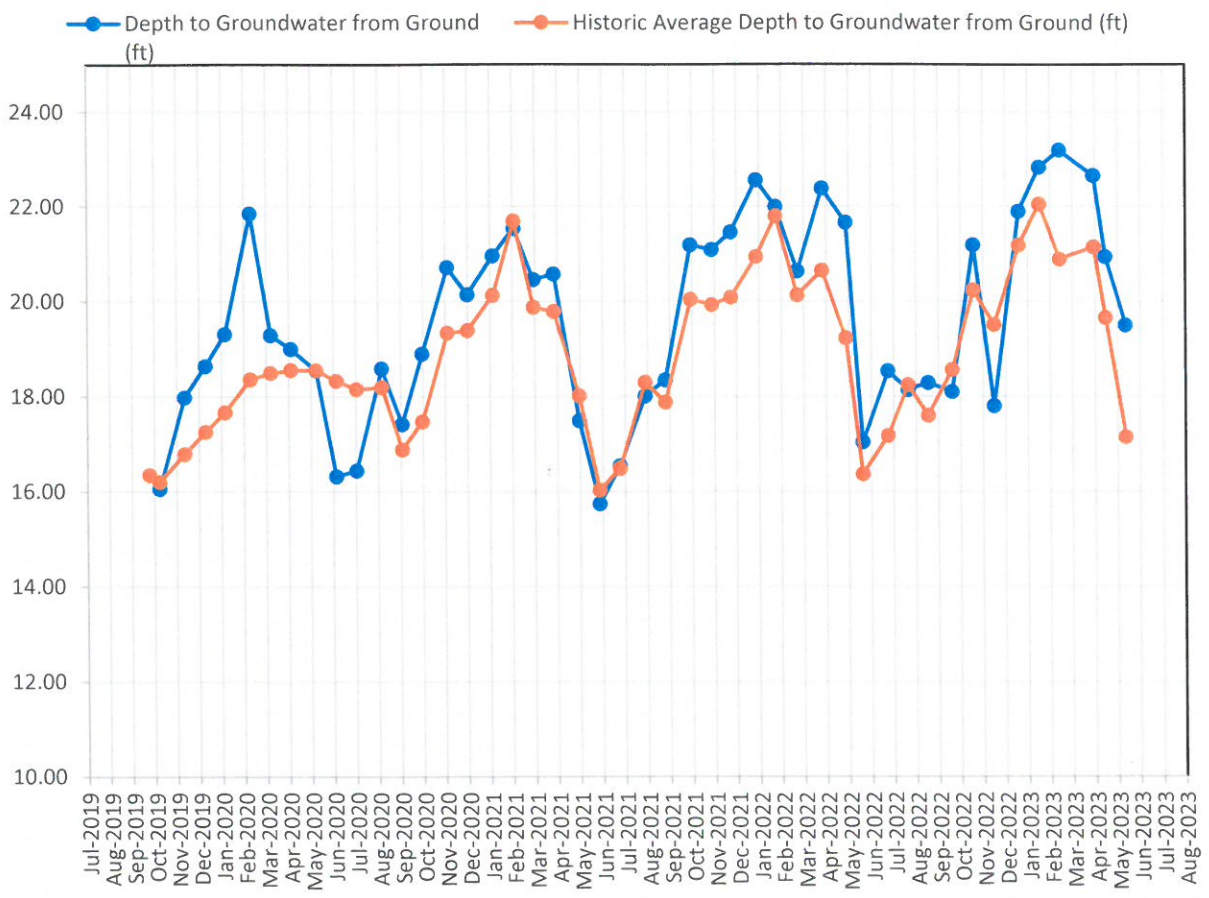
ENGINEERING, PLANNING, CONSULTING & REAL ESTATE

HQ & Mailing: 3050 67th Avenue, Suite 200, Greeley, CO 80634 | 970.535.9318 office | 970.535.9854 fax

Idaho: 213 Canyon Crest Drive, Suite 100, Twin Falls, ID 83301 | 208.595.5301

www.agpros.com

TAYLOR DOM



Derr Pit Off-Site Well Readings

Well Designation	Taylor Dom	
Date	Depth to Groundwater from Ground (ft)	Trigger Level of 2 feet below Historic Average Level Met (Yes or No) Start in May 2020
May 14, 2020	18.55	No
June 11, 2020	16.32	No
July 9, 2020	16.44	No
August 13, 2020	18.59	No
September 10, 2020	17.42	No
October 8, 2020	18.90	No
November 12, 2020	20.72	No
December 10, 2020	20.15	No
January 14, 2021	20.96	No
February 12, 2021	21.54	No
March 11, 2021	20.46	No
April 8, 2021	20.58	No
May 13, 2021	17.49	No
June 10, 2021	15.74	No
July 8, 2021	16.54	No
August 12, 2021	18.01	No
September 9, 2021	18.35	No
October 14, 2021	21.19	No
November 12, 2021	21.09	No
December 9, 2021	21.46	No
January 13, 2022	22.56	No
February 9, 2022	22.00	No
March 11, 2022	20.64	No
April 14, 2022	22.38	No
May 17, 2022	21.66	Yes
June 9, 2022	17.04	No
July 14, 2022	18.54	No
August 11, 2022	18.14	No
September 8, 2022	18.29	No
October 11, 2022	18.10	No
November 10, 2022	21.19	No
December 8, 2022	17.80	No
January 12, 2023	21.90	No
February 9, 2023	22.83	No
March 9, 2023	23.19	Yes
April 25, 2023	22.65	No
May 11, 2023	20.94	No
June 8, 2023	19.50	Yes

June 14, 2023

Mr. Brian Harrell
288 1st Ave
Greeley, CO 80631

Dear Mr. Harrell:

AGPROfessionals' staff have been monitoring groundwater elevations on behalf of IHC Scott at your property. We perform this monitoring on the second Thursday of each month. Attached is the elevation we recorded on June 8, 2023.

Identifier	Depth to Water from Ground Surface
Harrell #1 Dom	10.41
Harrell #2 Irr	9.22

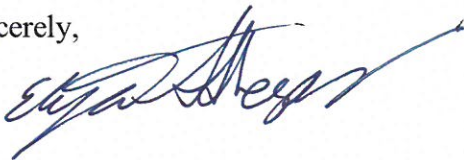
Has the 2-foot trigger point for two consecutive months been met?

☐ Yes

☒ No

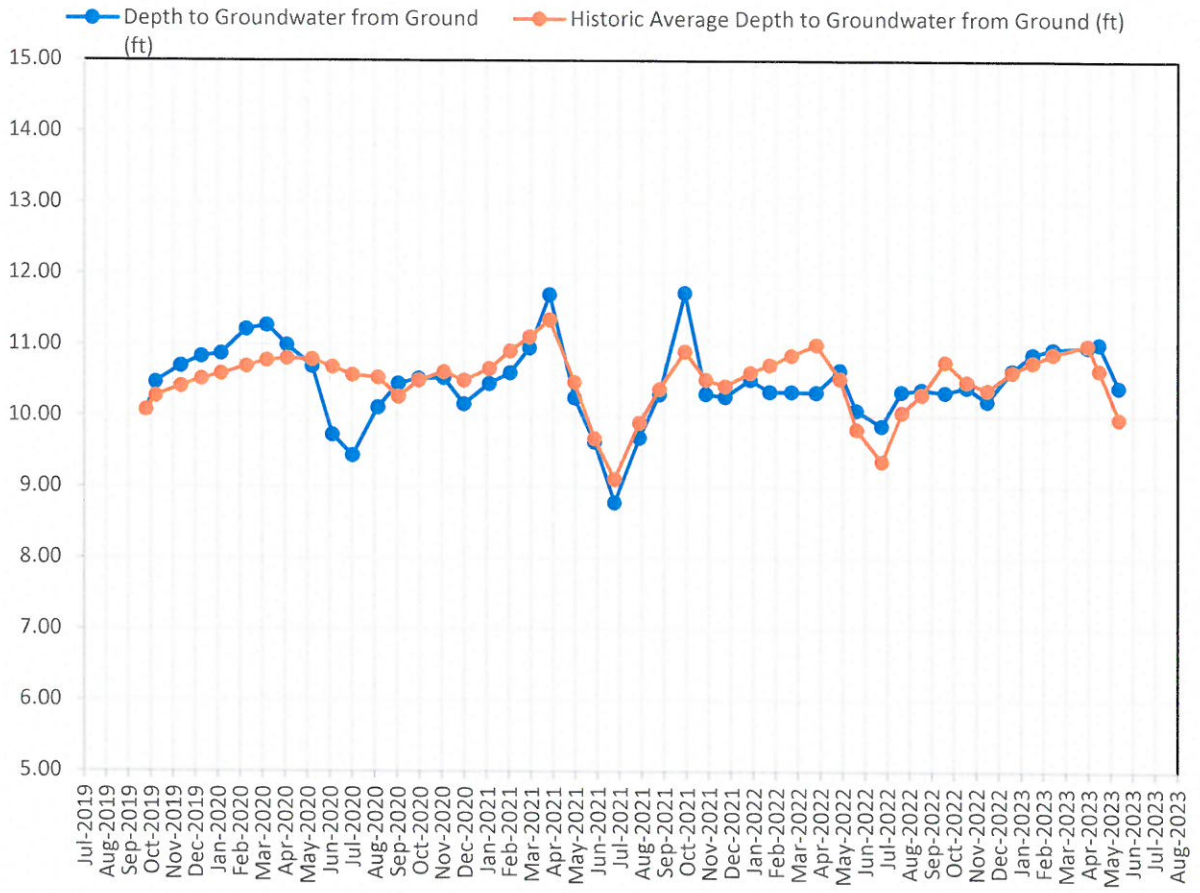
Please find the attached tables and graphs representing the data collected to this date. Please do not hesitate to contact me regarding these activities.

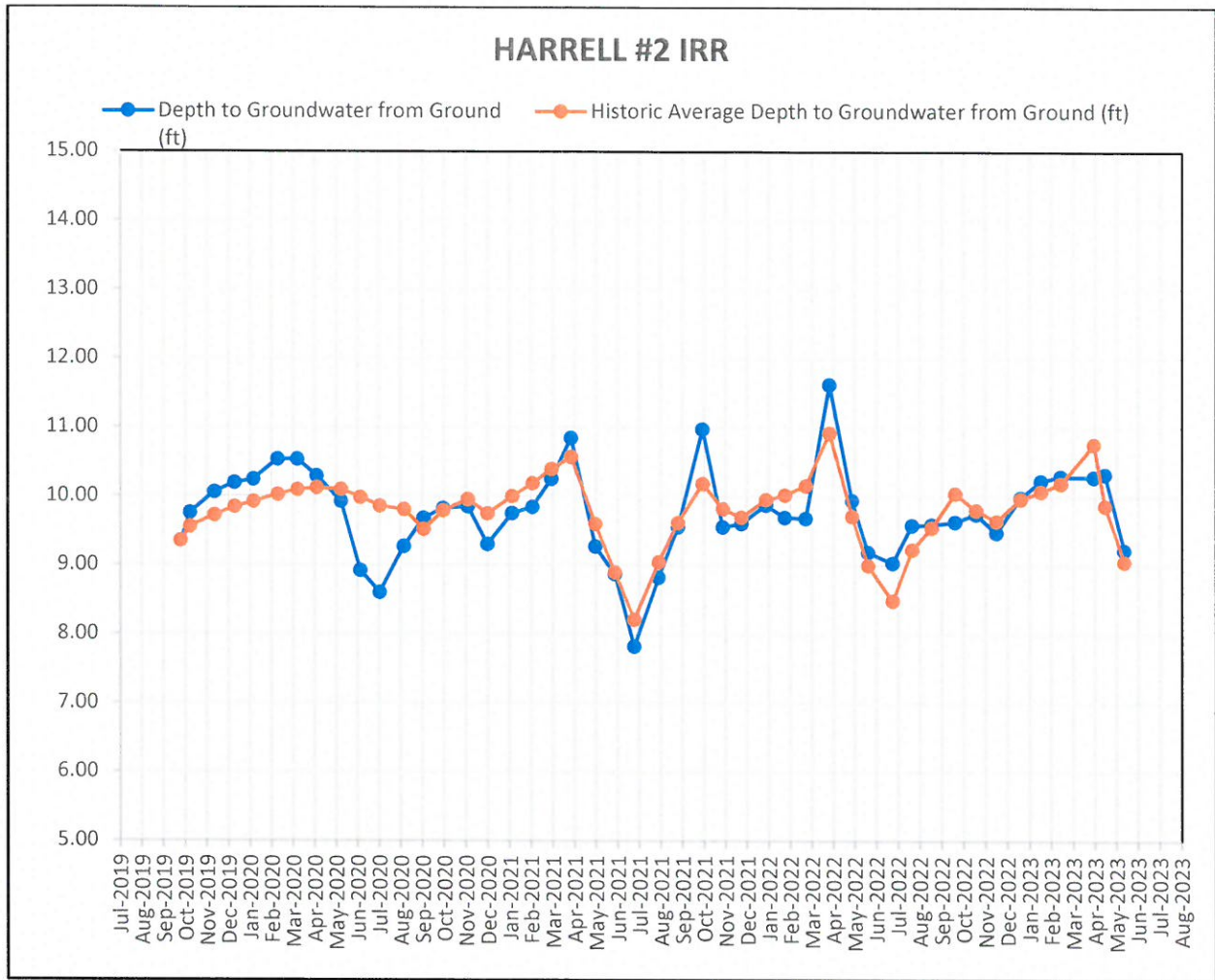
Sincerely,



Elijah Adlesperger
Field Technician
970-571-9038

HARRELL #1 DOM





Notes:

- 1) Graph displays Depth to Groundwater (lower depth to groundwater reading means higher water table elevation).
- 2) Trigger point is described in Settlement Agreement.
- 3) Since Historical Data was not established until September 2020, a year-to-date running average was used to compute historical average. As of September 2020, the historical average is computed as described in Settlement Agreement.

Derr Pit Off-Site Well Readings

Well Designation	Harrell #1 Dom		Harrell #2 Irr	
Date	Depth to Groundwater from Ground (ft)	Trigger Level of 2 feet below Historic Average Level Met (Yes or No) Start in May 2020	Depth to Groundwater from Ground (ft)	Trigger Level of 2 feet below Historic Average Level Met (Yes or No) Start in May 2020
May 14, 2020	10.69	No	9.92	No
June 11, 2020	9.73	No	8.92	No
July 9, 2020	9.44	No	8.60	No
August 13, 2020	10.11	No	9.27	No
September 10, 2020	10.45	No	9.68	No
October 8, 2020	10.52	No	9.82	No
November 12, 2020	10.53	No	9.85	No
December 10, 2020	10.16	No	9.30	No
January 14, 2021	10.45	No	9.75	No
February 12, 2021	10.60	No	9.84	No
March 11, 2021	10.95	No	10.25	No
April 8, 2021	11.70	No	10.84	No
May 13, 2021	10.25	No	9.27	No
June 10, 2021	9.63	No	8.87	No
July 8, 2021	8.78	No	7.82	No
August 12, 2021	9.69	No	8.82	No
September 9, 2021	10.30	No	9.55	No
October 14, 2021	11.73	No	10.97	No
November 12, 2021	10.31	No	9.55	No
December 9, 2021	10.27	No	9.60	No
January 13, 2022	10.51	No	9.87	No
February 9, 2022	10.34	No	9.69	No
March 11, 2022	10.34	No	9.68	No
April 14, 2022	10.33	No	11.62	No
May 17, 2022	10.64	No	9.94	No
June 9, 2022	10.08	No	9.19	No
July 14, 2022	9.86	No	9.03	No
August 11, 2022	10.34	No	9.58	No
September 8, 2022	10.37	No	9.59	No
October 11, 2022	10.33	No	9.63	No
November 10, 2022	10.41	No	9.74	No
December 8, 2022	10.21	No	9.47	No
January 12, 2023	10.64	No	9.98	No
February 9, 2023	10.87	No	10.22	No
March 9, 2023	10.94	No	10.29	No
April 25, 2023	10.98	No	10.28	No
May 11, 2023	11.02	No	10.32	No
June 8, 2023	10.41	No	9.22	No

June 14, 2023

Ms. Dixie Hoffner
30300 WCR 57
Gill, CO 80624

Dear Ms. Hoffner:

AGPROfessionals' staff have been monitoring groundwater elevations on behalf of IHC Scott at your property. We perform this monitoring on the second Thursday of each month. Attached is the elevation we recorded on June 8, 2023.

Identifier	Depth to Water from Ground Surface
Hoffner #1 Dom	43.96
Hoffner #2 Irr	48.80

Has the 2-foot trigger point for two consecutive months been met?

☐ Yes

☒ No

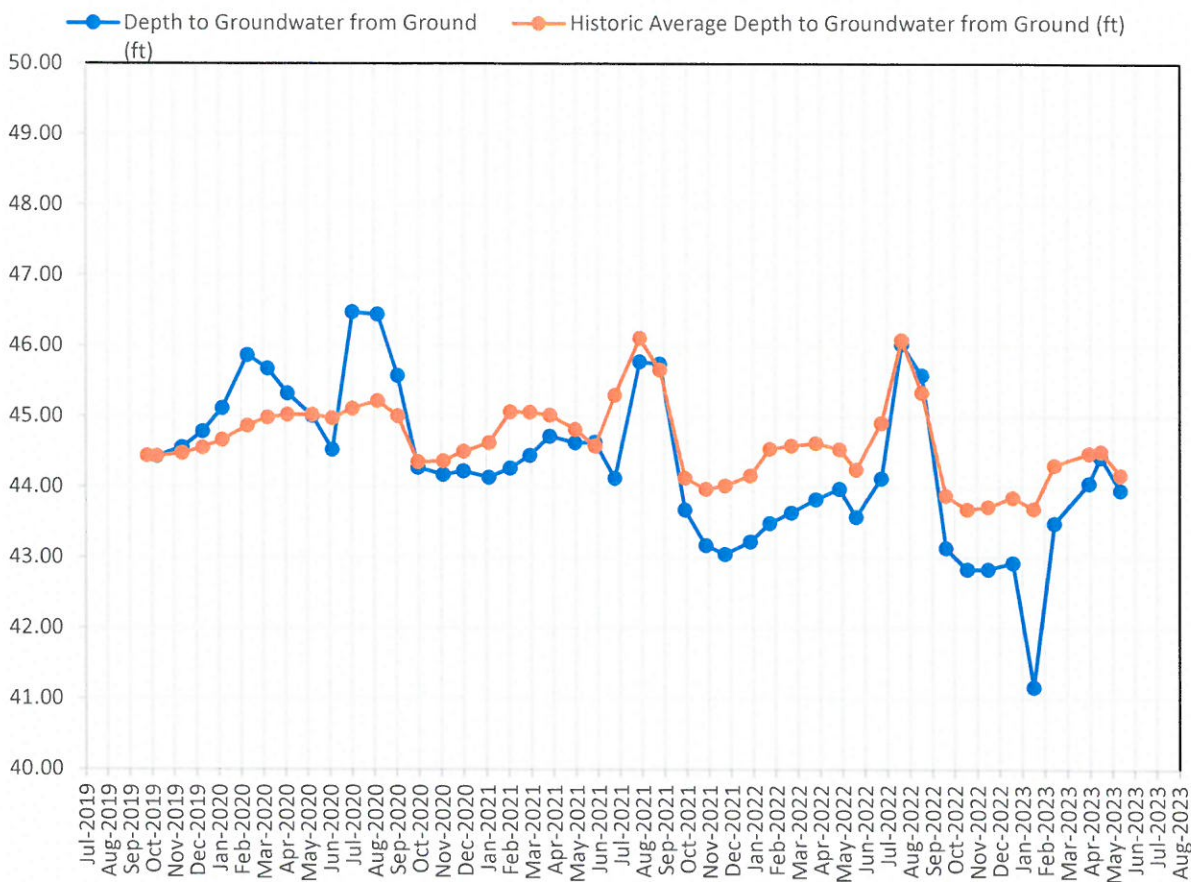
Please find the attached tables and graphs representing the data collected to this date. Please do not hesitate to contact me regarding these activities.

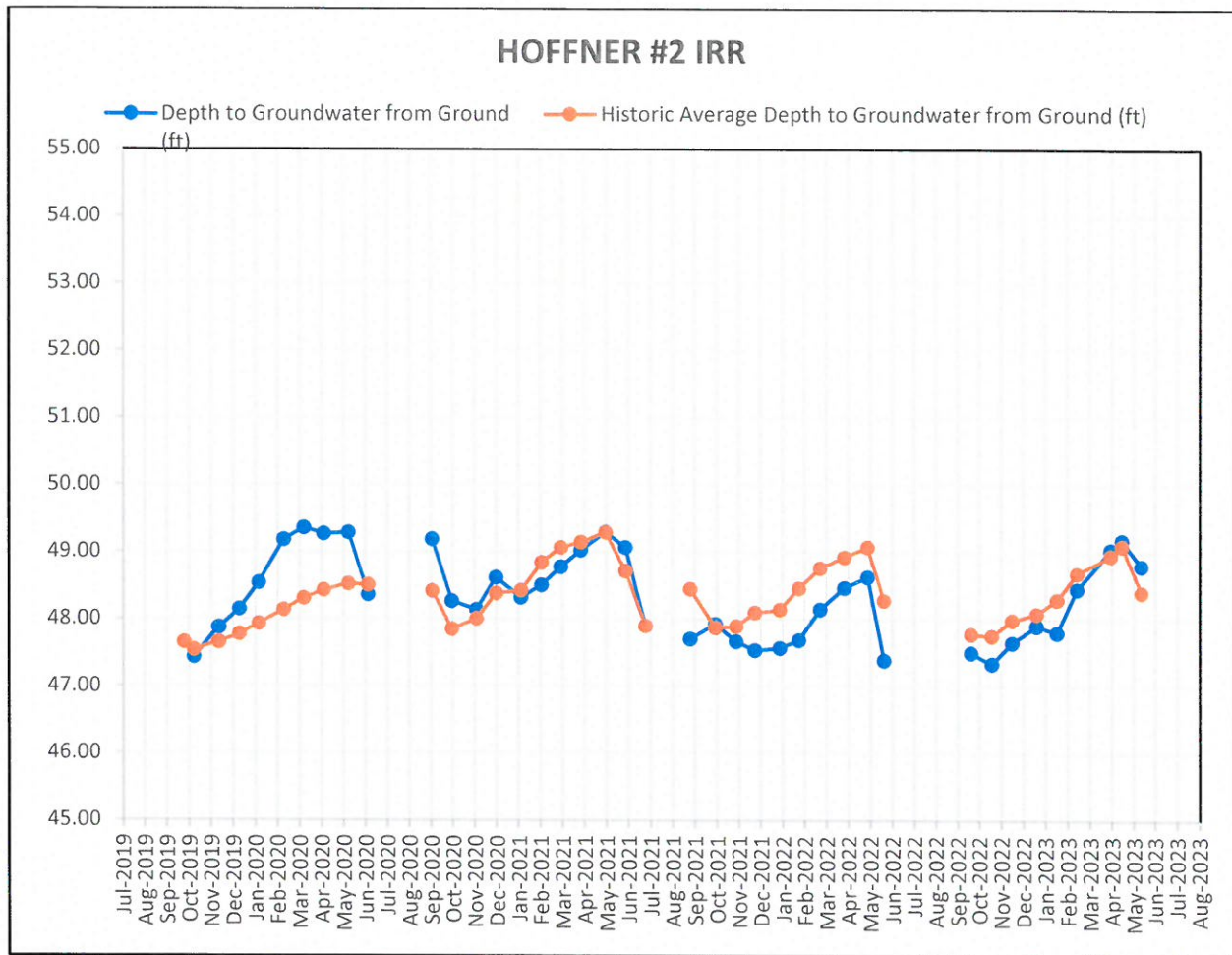
Sincerely,



Elijah Adlesperger
Field Technician
970-571-9038

HOFFNER #1 DOM





Notes:

- 1) Graph displays Depth to Groundwater (lower depth to groundwater reading means higher water table elevation).
- 2) Trigger point is described in Settlement Agreement.
- 3) Since Historical Data was not established until September 2020, a year-to-date running average was used to compute historical average. As of September 2020, the historical average is computed as described in Settlement Agreement.

Derr Pit Off-Site Well Readings

Well Designation	Hoffner #1 Dom		Hoffner #2 Irr	
	Depth to Groundwater from Ground (ft)	Trigger Level of 2 feet below Historic Average Level Met (Yes or No) Start in May 2020	Depth to Groundwater from Ground (ft)	Trigger Level of 2 feet below Historic Average Level Met (Yes or No) Start in May 2020
Date				
April 9, 2020	45.33		49.27	
May 14, 2020	45.01	No	49.29	No
June 11, 2020	44.53	No	48.37	No
July 9, 2020	46.48	No		No
August 13, 2020	46.45	No		No
September 10, 2020	45.58	No	49.19	No
October 8, 2020	44.28	No	48.27	No
November 12, 2020	44.18	No	48.14	No
December 10, 2020	44.23	No	48.62	No
January 14, 2021	44.14	No	48.32	No
February 12, 2021	44.27	No	48.51	No
March 11, 2021	44.45	No	48.78	No
April 8, 2021	44.72	No	49.03	No
May 13, 2021	44.63	No	49.30	No
June 10, 2021	44.64	No	49.07	No
July 8, 2021	44.13	No	47.90	No
August 12, 2021	45.78	No		No
September 9, 2021	45.75	No	47.71	No
October 14, 2021	43.68	No	47.93	No
November 12, 2021	43.18	No	47.67	No
December 9, 2021	43.05	No	47.54	No
January 13, 2022	43.23	No	47.57	No
February 9, 2022	43.49	No	47.69	No
March 11, 2022	43.64	No	48.15	No
April 14, 2022	43.83	No	48.47	No
May 17, 2022	43.98	No	48.63	No
June 9, 2022	43.58	No	47.39	No
July 14, 2022	44.13	No		No
August 11, 2022	46.03	No		No
September 8, 2022	45.59	No		No
October 11, 2022	43.14	No	47.50	No
November 10, 2022	42.84	No	47.34	No
December 8, 2022	42.84	No	47.65	No
January 12, 2023	42.93	No	47.90	No
February 9, 2023	41.17	No	47.80	No
March 9, 2023	43.49	No	48.45	No
April 25, 2023	44.06	No	49.04	No
May 11, 2023	44.43	No	49.18	No
June 8, 2023	43.96	No	48.80	No

June 14, 2023

Jerry Winters
49 Willowcroft Dr.
Littleton, CO 80123

Dear Mr. Winters:

AGPROfessionals' staff have been monitoring groundwater elevations on behalf of IHC Scott at your property. We perform this monitoring on the second Thursday of each month. Attached is the elevation we recorded on June 8, 2023.

Identifier	Depth to Water from Ground Surface
Hoffner #1 Dom	43.96
Hoffner #2 Irr	48.80

Has the 2-foot trigger point for two consecutive months been met?

☐ Yes

☒ No

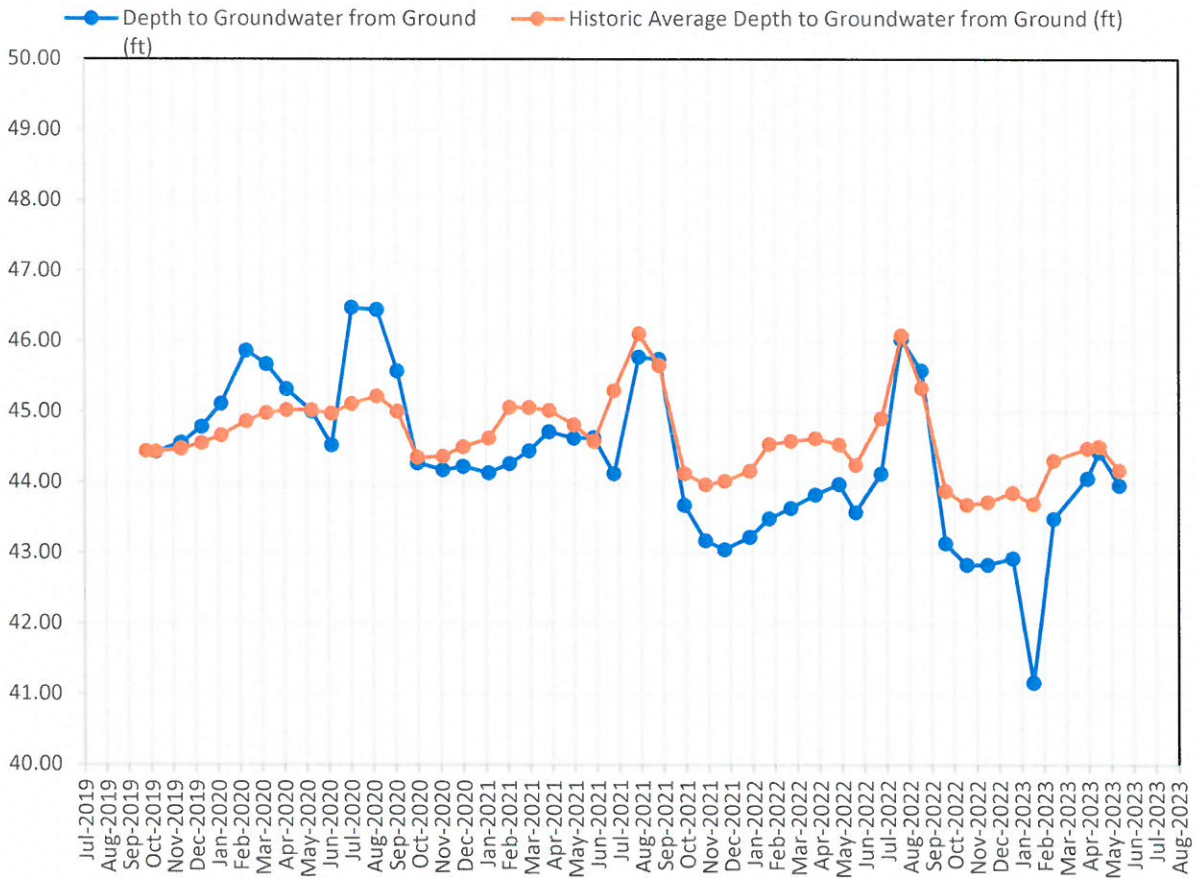
Please find the attached tables and graphs representing the data collected to this date. Please do not hesitate to contact me regarding these activities.

Sincerely,

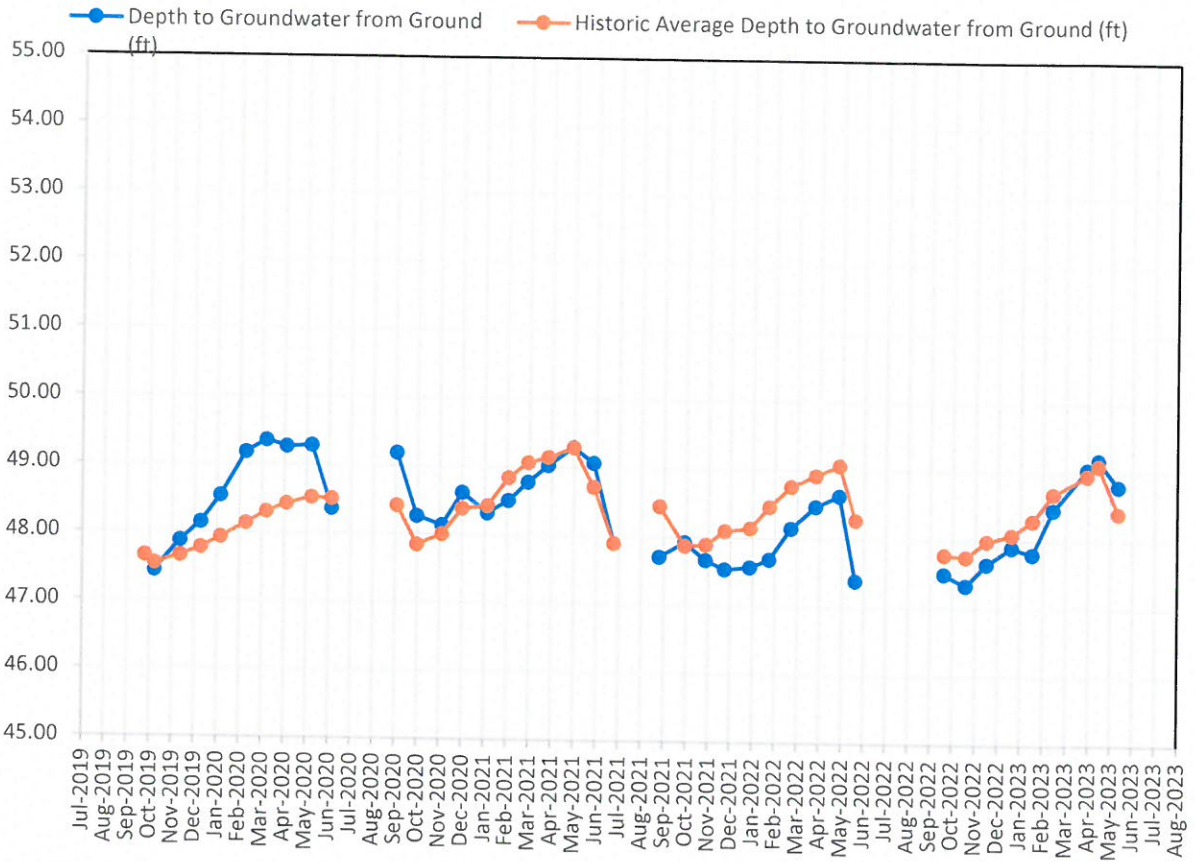


Elijah Adlesperger
Field Technician
970-571-9038

HOFFNER #1 DOM



HOFFNER #2 IRR



Notes:

- 1) Graph displays Depth to Groundwater (lower depth to groundwater reading means higher water table elevation).
- 2) Trigger point is described in Settlement Agreement.
- 3) Since Historical Data was not established until September 2020, a year-to-date running average was used to compute historical average. As of September 2020, the historical average is computed as described in Settlement Agreement.

Derr Pit Off-Site Well Readings

Well Designation	Hoffner #1 Dom		Hoffner #2 Irr	
Date	Depth to Groundwater from Ground (ft)	Trigger Level of 2 feet below Historic Average Level Met (Yes or No) Start in May 2020	Depth to Groundwater from Ground (ft)	Trigger Level of 2 feet below Historic Average Level Met (Yes or No) Start in May 2020
April 9, 2020	45.33		49.27	
May 14, 2020	45.01	No	49.29	No
June 11, 2020	44.53	No	48.37	No
July 9, 2020	46.48	No		No
August 13, 2020	46.45	No		No
September 10, 2020	45.58	No	49.19	No
October 8, 2020	44.28	No	48.27	No
November 12, 2020	44.18	No	48.14	No
December 10, 2020	44.23	No	48.62	No
January 14, 2021	44.14	No	48.32	No
February 12, 2021	44.27	No	48.51	No
March 11, 2021	44.45	No	48.78	No
April 8, 2021	44.72	No	49.03	No
May 13, 2021	44.63	No	49.30	No
June 10, 2021	44.64	No	49.07	No
July 8, 2021	44.13	No	47.90	No
August 12, 2021	45.78	No		No
September 9, 2021	45.75	No	47.71	No
October 14, 2021	43.68	No	47.93	No
November 12, 2021	43.18	No	47.67	No
December 9, 2021	43.05	No	47.54	No
January 13, 2022	43.23	No	47.57	No
February 9, 2022	43.49	No	47.69	No
March 11, 2022	43.64	No	48.15	No
April 14, 2022	43.83	No	48.47	No
May 17, 2022	43.98	No	48.63	No
June 9, 2022	43.58	No	47.39	No
July 14, 2022	44.13	No		No
August 11, 2022	46.03	No		No
September 8, 2022	45.59	No		No
October 11, 2022	43.14	No	47.50	No
November 10, 2022	42.84	No	47.34	No
December 8, 2022	42.84	No	47.65	No
January 12, 2023	42.93	No	47.90	No
February 9, 2023	41.17	No	47.80	No
March 9, 2023	43.49	No	48.45	No
April 25, 2023	44.06	No	49.04	No
May 11, 2023	44.43	No	49.18	No
June 8, 2023	43.96	No	48.80	No

June 14, 2023

Janet Brown
443 N Brisbane Ave
Greeley, CO 80634

Dear Ms. Brown:

AGPROfessionals' staff have been monitoring groundwater elevations on behalf of IHC Scott at your property. We perform this monitoring on the second Thursday of each month. Attached is the elevation we recorded on June 8, 2023.

Identifier	Depth to Water from Ground Surface
Koehler #1 Dom (Vault)	47.67
Koehler #2 Stock (Vault)	46.51
Koehler #3 Irr	50.07

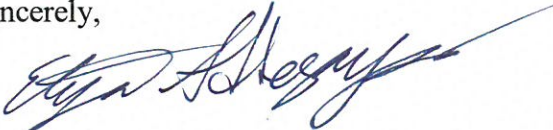
Has the 2-foot trigger point for two consecutive months been met?

☐ Yes

☒ No

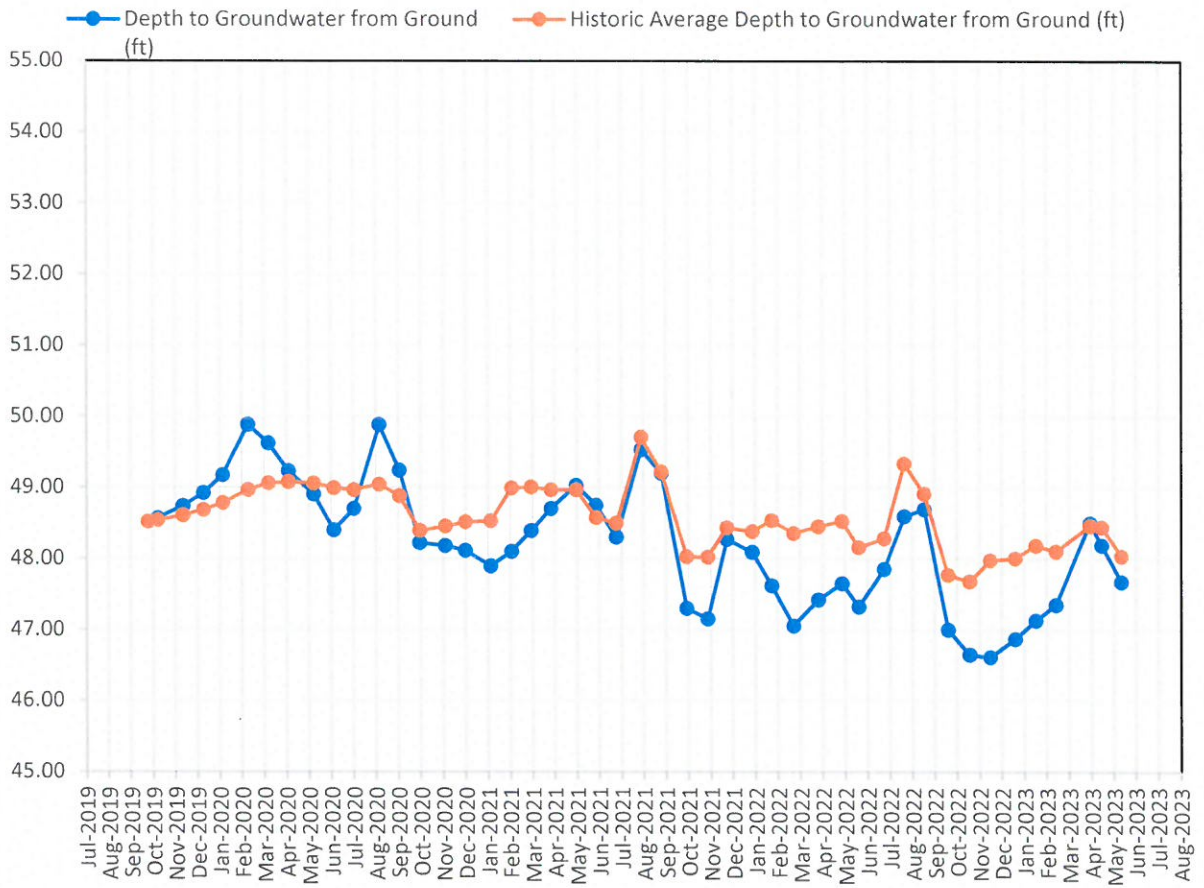
Please find the attached tables and graphs representing the data collected to this date. Please do not hesitate to contact me regarding these activities.

Sincerely,



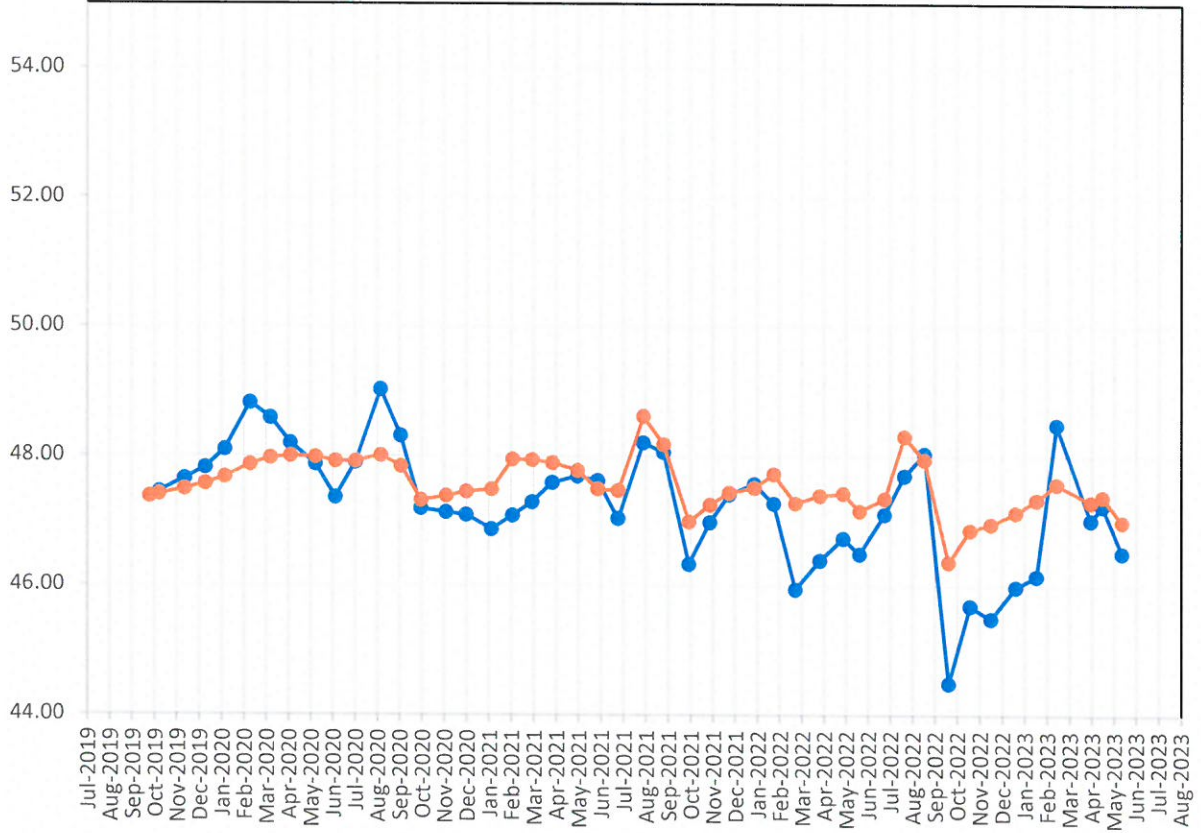
Elijah Adlesperger
Field Technician
970-571-9038

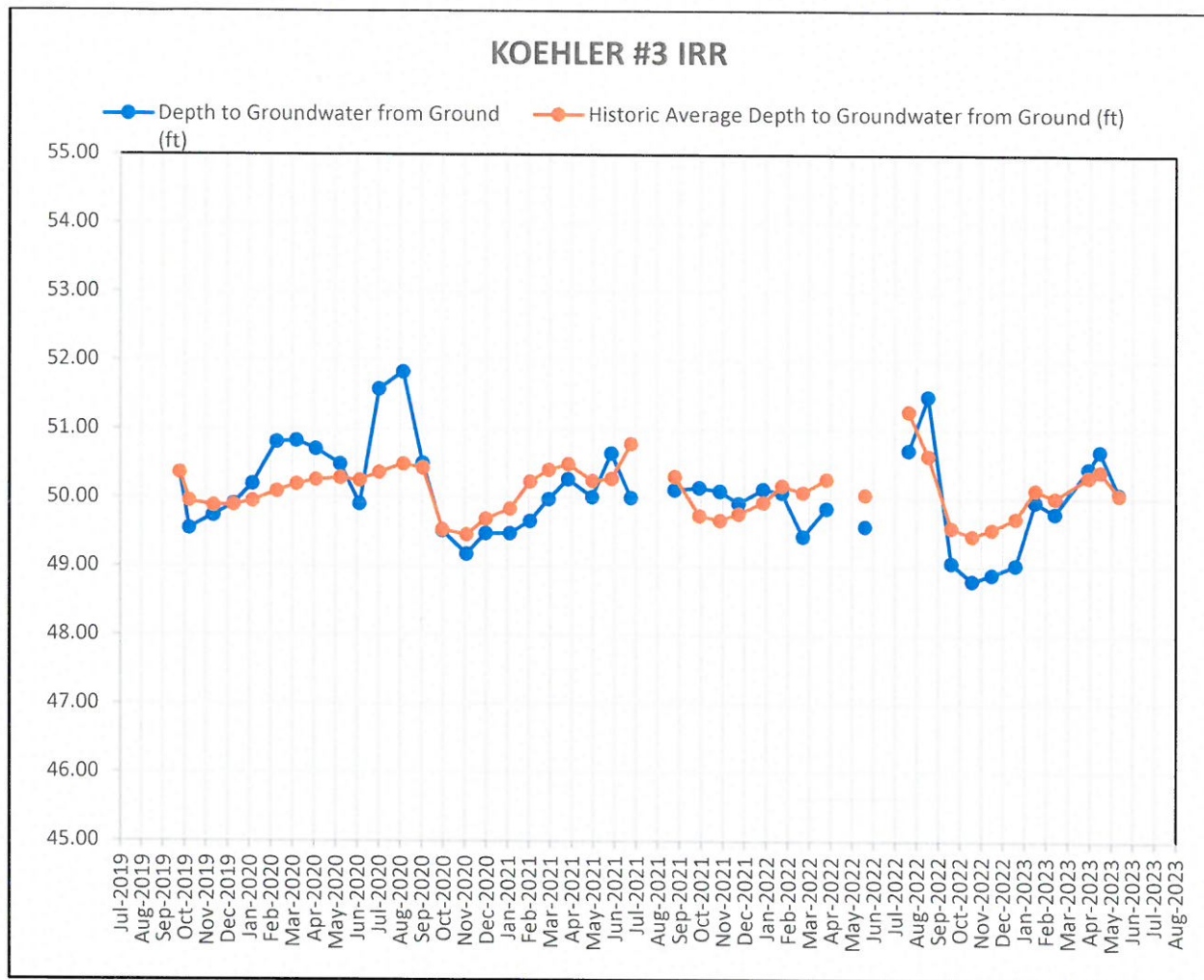
KOEHLER #1 DOM (VAULT)



KOEHLER #2 STOCK (VAULT)

● Depth to Groundwater from Ground (ft) ● Historic Average Depth to Groundwater from Ground (ft)





Notes:

- 1) Graph displays Depth to Groundwater (lower depth to groundwater reading means higher water table elevation).
- 2) Trigger point is described in Settlement Agreement.
- 3) Since Historical Data was not established until September 2020, a year-to-date running average was used to compute historical average. As of September 2020, the historical average is computed as described in Settlement Agreement.

Derr Pit Off-Site Well Readings

Well Designation	Koehler #1 Dom (Vault)		Koehler #2 Stock (Vault)		Koehler #3 Irr	
Date	Depth to Groundwater from Ground (ft)	Trigger Level of 2 feet below Historic Average Level Met (Yes or No) Start in May 2020	Depth to Groundwater from Ground (ft)	Trigger Level of 2 feet below Historic Average Level Met (Yes or No) Start in May 2020	Depth to Groundwater from Ground (ft)	Trigger Level of 2 feet below Historic Average Level Met (Yes or No) Start in May 2020
August 13, 2020	49.88	No	49.03	No	51.83	No
September 10, 2020	49.24	No	48.31	No	50.50	No
October 8, 2020	48.22	No	47.19	No	49.52	No
November 12, 2020	48.18	No	47.13	No	49.18	No
December 10, 2020	48.11	No	47.09	No	49.48	No
January 14, 2021	47.89	No	46.87	No	49.48	No
February 12, 2021	48.10	No	47.08	No	49.66	No
March 11, 2021	48.39	No	47.29	No	49.98	No
April 8, 2021	48.70	No	47.59	No	50.27	No
May 13, 2021	49.03	No	47.69	No	50.01	No
June 10, 2021	48.75	No	47.62	No	50.65	No
July 8, 2021	48.30	No	47.04	No	50.00	No
August 12, 2021	49.53	No	48.21	No		No
September 9, 2021	49.20	No	48.06	No	50.12	No
October 14, 2021	47.30	No	46.33	No	50.15	No
November 12, 2021	47.15	No	46.98	No	50.10	No
December 9, 2021	48.27	No	47.41	No	49.92	No
January 13, 2022	48.09	No	47.57	No	50.13	No
February 9, 2022	47.62	No	47.27	No	50.08	No
March 11, 2022	47.05	No	45.94	No	49.44	No
April 14, 2022	47.42	No	46.39	No	49.85	No
May 17, 2022	47.65	No	46.73	No		No
June 9, 2022	47.32	No	46.49	No	49.59	No
July 14, 2022	47.85	No	47.10	No		No
August 11, 2022	48.59	No	47.70	No	50.70	No
September 8, 2022	48.69	No	48.04	No	51.48	No
October 11, 2022	47.00	No	44.49	No	49.06	No
November 10, 2022	46.65	No	45.69	No	48.80	No
December 8, 2022	46.61	No	45.49	No	48.89	No
January 12, 2023	46.87	No	45.98	No	49.03	No
February 9, 2023	47.13	No	46.15	No	49.95	No
March 9, 2023	47.35	No	48.49	No	49.78	No
April 25, 2023	48.50	No	47.02	No	50.44	No
May 11, 2023	48.19	No	47.24	No	50.69	No
June 8, 2023	47.67	No	46.51	No	50.07	No

June 14, 2023

Mr. Brian Murata
29485 WCR 43
Greeley, CO 80631

Dear Mr. Murata:

AGPROfessionals' staff have been monitoring groundwater elevations on behalf of IHC Scott at your property. We perform this monitoring on the second Thursday of each month. Attached is the elevation we recorded on June 8, 2023.

Identifier	Depth to Water from Ground Surface
Murata #1 Irr	45.87

Has the 2-foot trigger point for two consecutive months been met?

☐ Yes

☒ No

Please find the attached table and graph representing the data collected to this date. Please do not hesitate to contact me regarding these activities.

Sincerely,



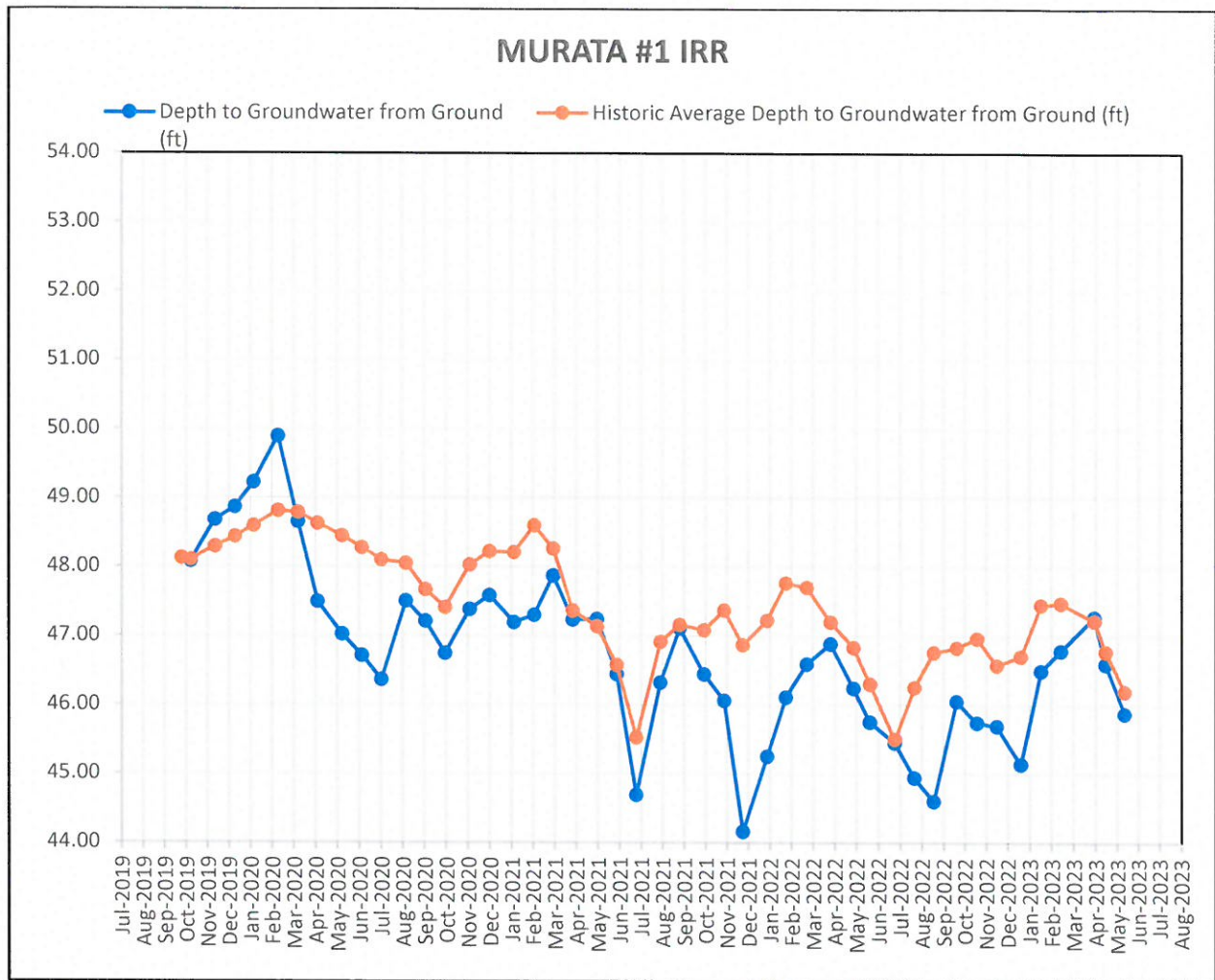
Elijah Adlesperger
Field Technician
970-571-9038

ENGINEERING, PLANNING, CONSULTING & REAL ESTATE

HQ & Mailing: 3050 67th Avenue, Suite 200, Greeley, CO 80634 | 970.535.9318 office | 970.535.9854 fax

Idaho: 213 Canyon Crest Drive, Suite 100, Twin Falls, ID 83301 | 208.595.5301

www.agpros.com



Notes:

- 1) Graph displays Depth to Groundwater (lower depth to groundwater reading means higher water table elevation).
- 2) Trigger point is described in Settlement Agreement.
- 3) Since Historical Data was not established until September 2020, a year-to-date running average was used to compute historical average. As of September 2020, the historical average is computed as described in Settlement Agreement.

Derr Pit Off-Site Well Readings

Well Designation	Murata #1 Irr	
Date	Depth to Groundwater from Ground (ft)	Trigger Level of 2 feet below Historic Average Level Met (Yes or No) Start in May 2020
May 14, 2020	47.02	No
June 11, 2020	46.71	No
July 9, 2020	46.36	No
August 13, 2020	47.50	No
September 10, 2020	47.21	No
October 8, 2020	46.74	No
November 12, 2020	47.38	No
December 10, 2020	47.58	No
January 14, 2021	47.19	No
February 12, 2021	47.30	No
March 11, 2021	47.87	No
April 8, 2021	47.23	No
May 13, 2021	47.24	No
June 10, 2021	46.44	No
July 8, 2021	44.69	No
August 12, 2021	46.32	No
September 9, 2021	47.11	No
October 14, 2021	46.44	No
November 12, 2021	46.06	No
December 9, 2021	44.16	No
January 13, 2022	45.25	No
February 9, 2022	46.11	No
March 11, 2022	46.59	No
April 14, 2022	46.88	No
May 17, 2022	46.24	No
June 9, 2022	45.75	No
July 14, 2022	45.45	No
August 11, 2022	44.94	No
September 8, 2022	44.60	No
October 11, 2022	46.05	No
November 10, 2022	45.74	No
December 8, 2022	45.69	No
January 12, 2023	45.14	No
February 9, 2023	46.49	No
March 9, 2023	46.78	No
April 25, 2023	47.27	No
May 11, 2023	46.59	No
June 8, 2023	45.87	No

June 14, 2023

Ms. Silvia Parker
211 Balsam Avenue
Greeley, CO 80631

Dear Ms. Parker:

AGPROfessionals' staff have been monitoring groundwater elevations on behalf of IHC Scott at your property. We perform this monitoring on the second Thursday of each month. Attached is the elevation we recorded on June 8, 2023.

Identifier	Depth to Water from Ground Surface
Parker Dom (Vault)	39.38

Has the 2-foot trigger point for two consecutive months been met?

☐ Yes

☒ No

Please find the attached table and graph representing the data collected to this date. Please do not hesitate to contact me regarding these activities.

Sincerely,



Elijah Adlesperger,
Field Technician
970-571-9038

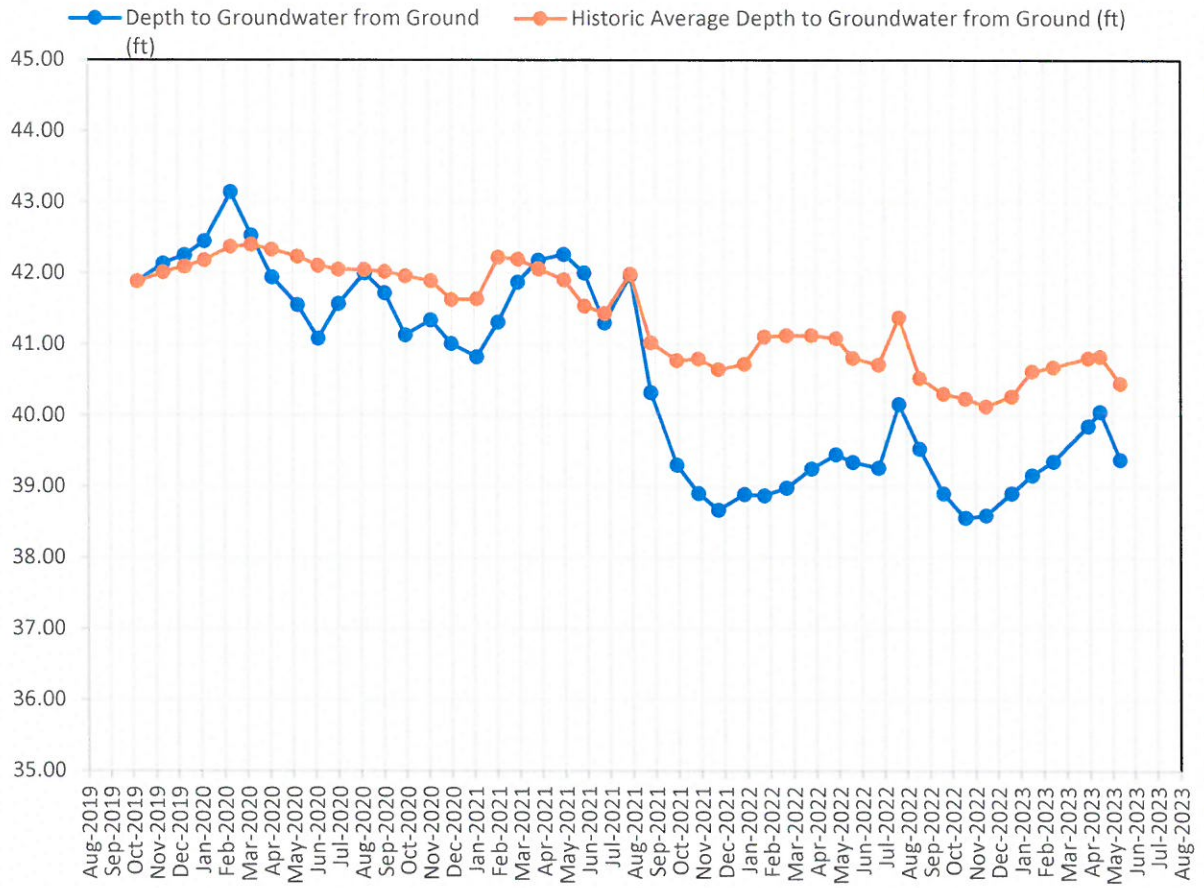
ENGINEERING, PLANNING, CONSULTING & REAL ESTATE

HQ & Mailing: 3050 67th Avenue, Suite 200, Greeley, CO 80634 | 970.535.9318 office | 970.535.9854 fax

Idaho: 213 Canyon Crest Drive, Suite 100, Twin Falls, ID 83301 | 208.595.5301

www.agpros.com

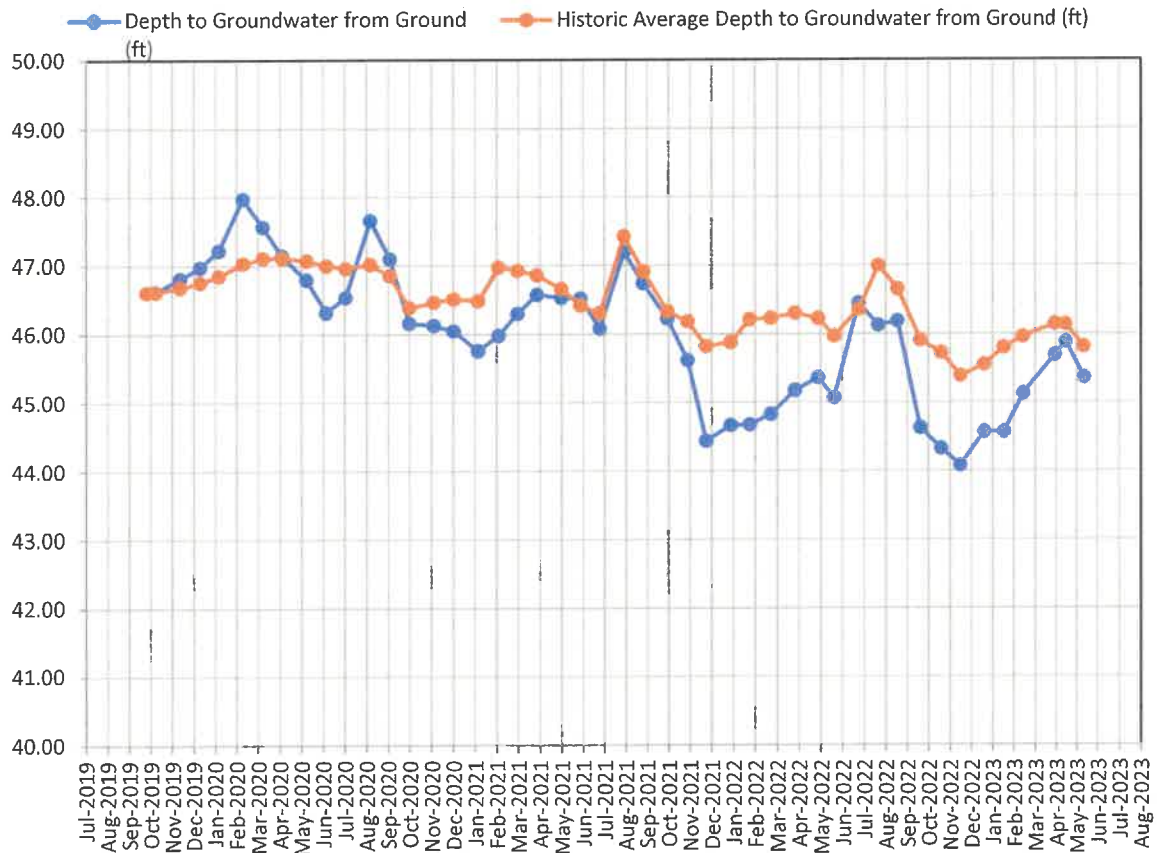
PARKER DOM



Derr Pit Off-Site Well Readings

Well Designation	Parker Dom	
Date	Depth to Groundwater from Ground (ft)	Trigger Level of 2 feet below Historic Average Level Met (Yes or No) Start in May 2020
May 14, 2020	41.55	No
June 11, 2020	41.08	No
July 9, 2020	41.57	No
August 13, 2020	42.00	No
September 10, 2020	41.72	No
October 8, 2020	41.13	No
November 12, 2020	41.34	No
December 10, 2020	41.01	No
January 14, 2021	40.82	No
February 12, 2021	41.31	No
March 11, 2021	41.87	No
April 8, 2021	42.18	No
May 13, 2021	42.26	No
June 10, 2021	42.00	No
July 8, 2021	41.30	No
August 12, 2021	41.97	No
September 9, 2021	40.32	No
October 14, 2021	39.30	No
November 12, 2021	38.90	No
December 9, 2021	38.67	No
January 13, 2022	38.89	No
February 9, 2022	38.87	No
March 11, 2022	38.98	No
April 14, 2022	39.25	No
May 17, 2022	39.45	No
June 9, 2022	39.34	No
July 14, 2022	39.26	No
August 11, 2022	40.16	No
September 8, 2022	39.53	No
October 11, 2022	38.90	No
November 10, 2022	38.56	No
December 8, 2022	38.59	No
January 12, 2023	38.90	No
February 9, 2023	39.16	No
March 9, 2023	39.35	No
April 25, 2023	39.85	No
May 11, 2023	40.05	No
June 8, 2023	39.38	No

GLOBAL ASSET RECOVERY DAVIS IRR



Notes:

- 1) Graph displays Depth to Groundwater (lower depth to groundwater reading means higher water table elevation).
- 2) Trigger point is described in Settlement Agreement.
- 3) Since Historical Data was not established until September 2020, a year-to-date running average was used to compute historical average. As of September 2020, the historical average is computed as described in Settlement Agreement.

Derr Pit Off-Site Well Readings

Well Designation	Global Assets Davis Irr	
	Depth to Groundwater from Ground (ft)	Trigger Level of 2 feet below Historic Average Level Met (Yes or No) Start in May 2020
Date		
June 11, 2020	10.32	No
July 9, 2020	10.60	No
August 13, 2020	9.90	No
September 10, 2020	11.87	No
October 8, 2020	13.36	No
November 12, 2020	14.01	No
December 10, 2020	12.75	No
January 14, 2021	13.88	No
February 12, 2021	14.09	No
March 11, 2021	14.71	No
April 8, 2021	13.90	No
May 13, 2021	12.23	No
June 10, 2021	11.10	No
July 8, 2021	10.63	No
August 12, 2021	11.48	No
September 9, 2021	13.13	No
October 14, 2021	13.49	No
November 12, 2021	13.88	No
December 9, 2021	14.59	No
January 13, 2022	15.50	No
February 9, 2022	14.13	No
March 11, 2022	13.48	No
April 14, 2022	14.70	No
May 17, 2022	14.83	No
June 9, 2022	11.29	No
July 14, 2022	11.68	No
August 11, 2022	12.50	No
September 8, 2022	11.99	No
October 11, 2022	12.29	No
November 10, 2022	13.68	No
December 8, 2022	11.72	No
January 12, 2023	15.07	No
February 9, 2023	15.72	No
March 9, 2023	15.88	No
April 25, 2023	15.34	No
May 11, 2023	14.12	No
June 8, 2023	12.54	No