



STATE OF
COLORADO

Wein - DNR, Clayton <clayton.wein@state.co.us>

Bowie No. 2 Mine May 31, 2023 Inspection Report

1 message

Wein - DNR, Clayton <clayton.wein@state.co.us>

Mon, Jun 12, 2023 at 2:42 PM

To: basilbear@wolverinefuels.com, tammekb@gmail.com, "Zuber - DNR, Rob" <rob.zuber@state.co.us>

Good afternoon Everyone,

Attached is the Division's inspection report for the partial inspection of the Bowie No. 2 Mine conducted on May 31, 2023. Please note the maintenance item outlined in the report by Bold text. Please feel free to contact me if you have any questions.

Sincerely,
Clayton Wein
Environmental Protection Specialist



COLORADO
Division of Reclamation,
Mining and Safety
Department of Natural Resources

P 303.866.3567 x 8185 | F 303.832.8106
1313 Sherman Street, Room 215, Denver, CO 80203
clayton.wein@state.co.us | <https://www.drms.colorado.gov>



Bowie No. 2 Mine, C-1996-083, May 31, 2023 Inspection Report_CCW.pdf
1350K



PERMIT INFORMATION

Permit Number: C-1996-083 Mine Name: Bowie No. 2 Mine Operator: Bowie Resources, LLC Operator Address: Mr. Basil Bear P.O. Box 1488 Paonia, CO 81428	County: Delta Operation Type: Underground Permit Status: Active Ownership: Private
	Operator Representative Present: NA
Operator Representative Signature: (Field Issuance Only) 	

INSPECTION INFORMATION

Inspection Start Date: May 31, 2023 Inspection Start Time: 11:00 Inspection End Date: May 31, 2023 Inspection End Time: 12:40		Inspection Type: Coal Partial Inspection Inspection Reason: Normal I&E Program Weather: Clear	
Joint Inspection Agency: None		Joint Inspection Contacts: None	
Post Inspection Agency: None		Post Inspection Contacts: None	
Inspector(s): Clayton Wein	Inspector's Signature: <i>Clayton Wein</i>		Signature Date: 6/12/2023

Inspection Topic Summary

NOTE: Y=Inspected N=Not Inspected R=Comments Noted V=Violation Issued NA=Not Applicable

N - Air Resource Protection

N - Availability of Records

Y - Backfill & Grading

Y - Excess Spoil and Dev. Waste

N - Explosives

N - Fish & Wildlife

R - Hydrologic Balance

Y - Gen. Compliance With Mine Plan

N - Other

R - Processing Waste

R - Roads

N - Reclamation Success

N - Revegetation

N - Subsidence

N - Slides and Other Damage

R - Support Facilities On-site

Y - Signs and Markers

N - Support Facilities Not On-site

N - Special Categories Of Mining

R - Topsoil

COMMENTS

This inspection report documents the observations made by the Division during a partial inspection of the Bowie No. 2 Mine on May 31, 2023. The inspection was conducted by Clayton Wein of the Division. No company representative accompanied the inspection. The weather was clear with a temperature of 71 degrees F. The ground conditions were mostly dry.

EXCESS SPOIL and DEVELOPMENT WASTE – Rule 4.09**Placement; Drainage Control; Surface Stabilization:**

During the inspection, work was continuing on Gob Pile #3 (Photo 1). The placement of subsoil on the slopes and a portion of the top of the pile had progressed. The pile was stable and there were no indications of erosion.

Gob Pile #4 has been vegetated for several years. With the exception of a slough observed on the pile, the rest of the pile was stable with vegetative cover. There were no additional erosional features identified during the inspection. The slough on the pile had not enlarged since the Division's May 9, 2023 inspection. There was no evidence of any recent seepage of water out of the slough (Photo 2). If the area impacted by the slough continues to remain dry, repairs to Gob Pile #4 should be conducted.

Gob Pile #2 remains half reclaimed. The remaining placement of subsoil and topsoil on the pile will be conducted once reclamation work at Gob Pile #3 is complete. The lower portion of the face of Gob Pile #2 has been vegetated for a number of years. The lower portion of the pile was stable with vegetative cover. There were no indications of erosion. There is a small seep located at the base of the pile next to the haul road. The seep remained similar in size as previous inspections. There was no flow coming out of the seep during the inspection. The upper face and top of Gob Pile #2 remains exposed. The face of the pile was stable with minor erosional rills (Photo 3). The rills were not significant enough in size or depth to have affected the stability of the pile. The top of the pile was stable with no erosional concerns. All surface flow on the top of the pile is directed to a riprap lined channel on the eastern end at the top of the pile. There was no surface runoff observed during the inspection.

Number of Partial Inspection this Fiscal Year: 7Number of Complete Inspections this Fiscal Year: 3

The riprap channel was stable with no erosional features identified.

HYDROLOGIC BALANCE - Rule 4.05

Drainage Control 4.05.1, 4.05.2, 4.05.3; Siltation Structures 4.05.5, 4.05.6; Discharge Structures 4.05.7, 4.05.10; Diversions 4.05.4; Effluent Limits 4.05.2; Ground Water Monitoring 4.05.13; Surface Water Monitoring 4.05.13; Drainage – Acid and Toxic Materials 4.05.8; Impoundments 4.05.6, 4.05.9; Stream Buffer Zones 4.05.18:

Ponds B, C and D were visited during the inspection. Pond B was holding a small amount of water in it. No discharge was occurring from the pond. The outlet for the pond was unobstructed. Pond B's embankments were stable with vegetative cover. There were no erosional features identified. Pond C was also holding a small amount of water in it (Photo 4). The level of water in the pond was well below the primary spillway. The embankment was vegetated and stable. No erosional concerns were observed. Pond D was dry during the inspection (Photo 5). The spillway was clear of debris. The pond's embankment was stable and covered with vegetation. There were no indications of erosion.

Ditches along the main haul road were in good condition and functioning as designed. There is a slide above Curve 10 that has crushed the concrete ditch (Photo 6). Flow on the north side of the haul road was temporarily being diverted across the haul road and into the ditch on the south side of the road (Photo 7). The operator is currently working on a permanent solution to the impacted ditch and will submit a revision to the Division in the near future. All water flowing across the haul road was observed to be captured in the temporary diversion ditch which connected to the existing ditch leading to pond B. The Slide had moved since the Division's May 9, 2023 inspection. It is likely that the impacted area on Curve 10 will continue to move as long as there is still moisture in the soils above Curve 10. Access to the road above the slide was still available.

ROADS – Rule 4.03

Construction 4.03.1(3)/4.03.2(3), Drainage 4.03.1(4)/4.03.2(4), Surfacing and Maintenance 4.03.1(5) and (6)/4.03.2(5) and (6), Reclamation 4.03.1(7)/4.03.2(7):

The main haul road was observed to be stable during the inspection. Please refer to the Hydrology section of this report for details regarding the slide on Curve 10. With exception to the slide above Curve 10, the remaining ditches and culverts along the main haul road were clear of debris and functioning as designed to transport runoff to Ponds B and C. A Minor slide above Curve 11 has been noted in previous Division Inspection Reports (Photo 8). The slide appeared to be dry and had not moved since the Division's previous inspection.

The lower portion of the haul road extends from the base of the paved haul road to the east to Gob Pile #2. This portion of the road is unpaved. The road was stable with no indications of erosion. The ditches for the road were dry during the inspection. No obstructions were observed.

SUPPORT FACILITIES - Rule 4.04:

The upper portals bench (Bowie II portals) was well kept and stable. Roll-off dumpsters were located on

Number of Partial Inspection this Fiscal Year: 7

Number of Complete Inspections this Fiscal Year: 3

the pad for non-coal waste. Fuel storage is also located on this bench. The fuels were located in areas with secondary containment. There were no off-site impacts observed. Equipment was parked on this bench during the inspection. **The loader was observed to have a small leak dripping from underneath it (Photo 9). Please remove the contaminated soil and dispose of in accordance with the approved Spill Prevention Control and Countermeasures plan. Please also place an oil drip pan underneath the loader to prevent future contamination of soils.** The lower portals bench (Bowie III portals) was stable. The slide observed on the western slope had not moved since the Division's previous inspection. There was no seepage observed coming from the slide. The small slide on the north slope was also in the same condition as observed during the May 9, 2023 inspection. No further impacts were observed. The coal stockpile pad located at the base of the paved haul road and the conveyor was stable with no indications of erosion. No off-site impacts were observed.

TOPSOIL – Rule 4.06

Removal 4.06.2; Substitute Materials 4.06.4(4); Storage and Protection 4.06.3; Redistribution 4.06.4:

The main topsoil pile located north of the coal stockpile pad and adjacent to the paved haul road, was stable with sufficient vegetative cover (Photo 10). There were no indications of erosional features observed. The topsoil pile marker was in place. The perimeter ditch for the pile was dry during the inspection. There were no indications of erosion. The ditch was vegetated and stable.

DOCUMENTS RECEIVED: None

OTHER (SPECIFY): None

Number of Partial Inspection this Fiscal Year: 7

Number of Complete Inspections this Fiscal Year: 3

ENFORCEMENT ACTIONS/COMPLIANCE

No enforcement actions were initiated as a result of this inspection, nor are any pending.

Number of Partial Inspection this Fiscal Year: 7

Number of Complete Inspections this Fiscal Year: 3

PHOTOGRAPHS

Photo 1: Work being conducted on Gob Pile #3.



Photo 2: The slough on the reclaimed face of Gob Pile #4.



Number of Partial Inspection this Fiscal Year: 7

Number of Complete Inspections this Fiscal Year: 3

Photo 3: The minor rills on the upper face of Gob Pile #2.

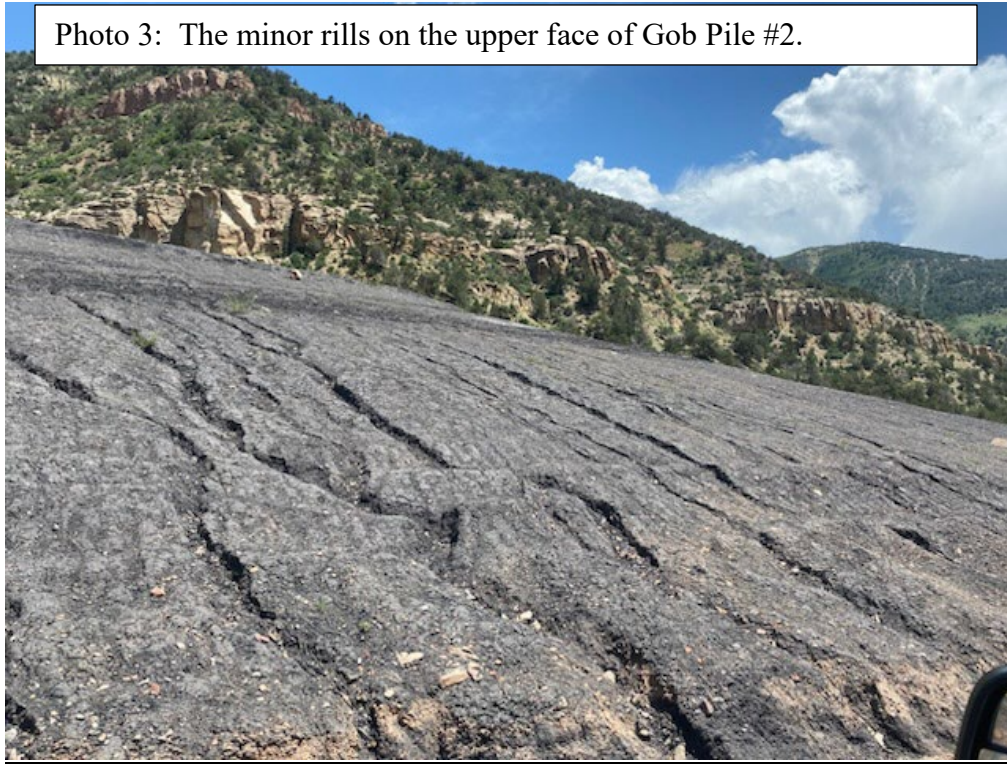
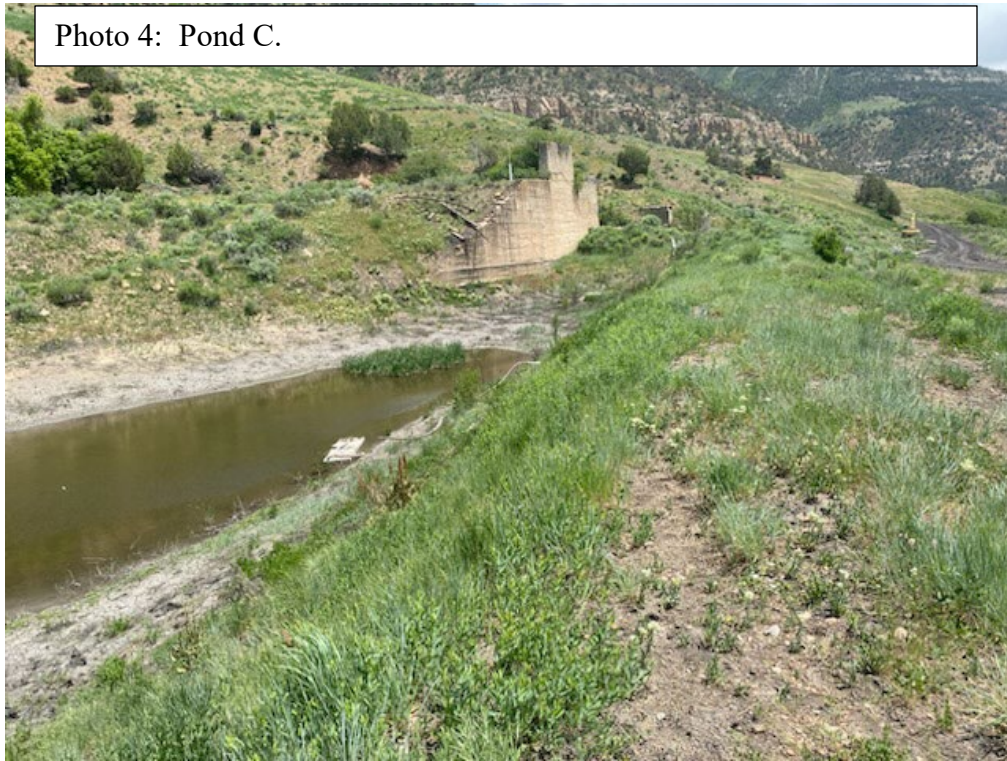


Photo 4: Pond C.



Number of Partial Inspection this Fiscal Year: 7

Number of Complete Inspections this Fiscal Year: 3

Photo 5: Pond D.

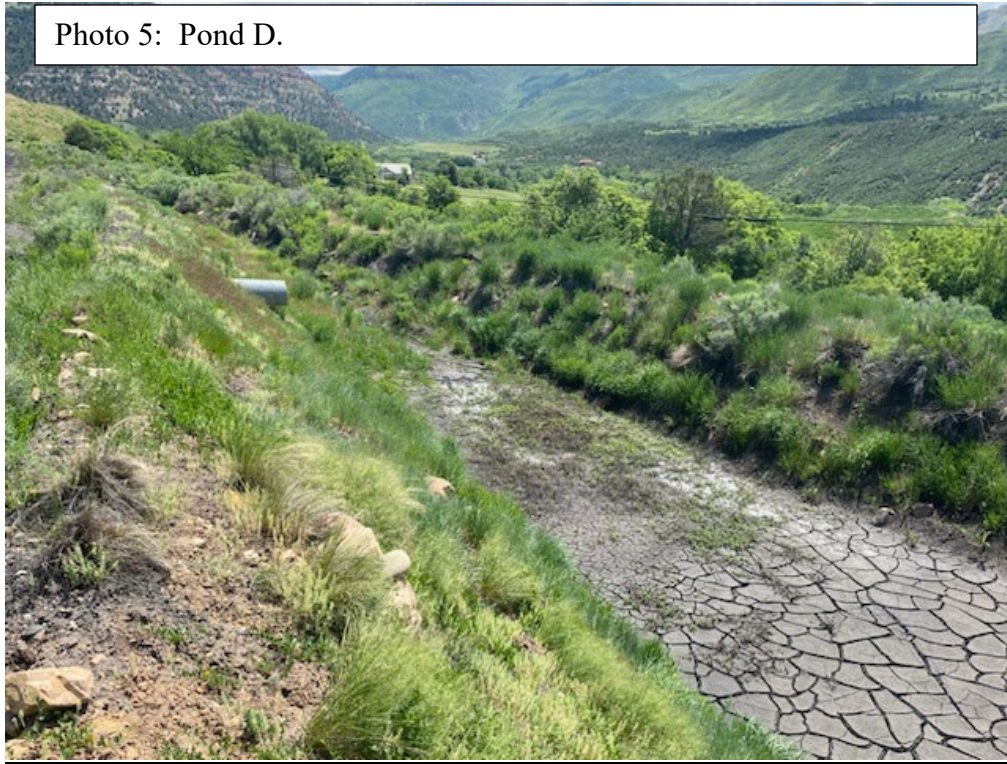
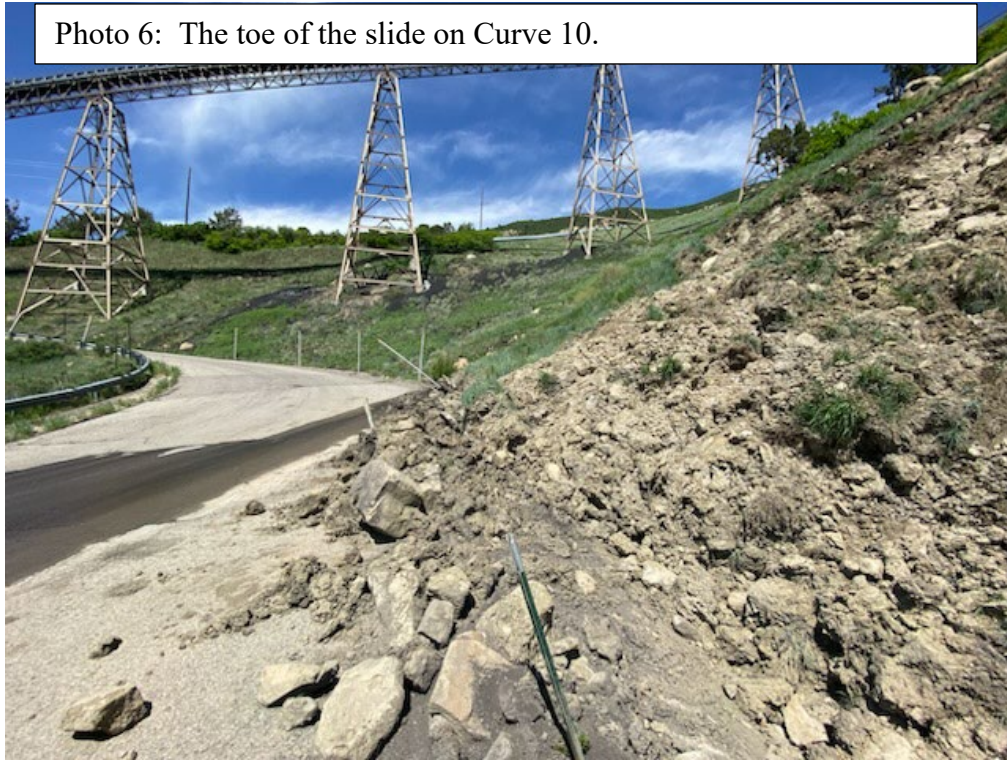


Photo 6: The toe of the slide on Curve 10.



Number of Partial Inspection this Fiscal Year: 7

Number of Complete Inspections this Fiscal Year: 3

Photo 7: The water being diverted across the paved haul road below the slide on Curve 10.

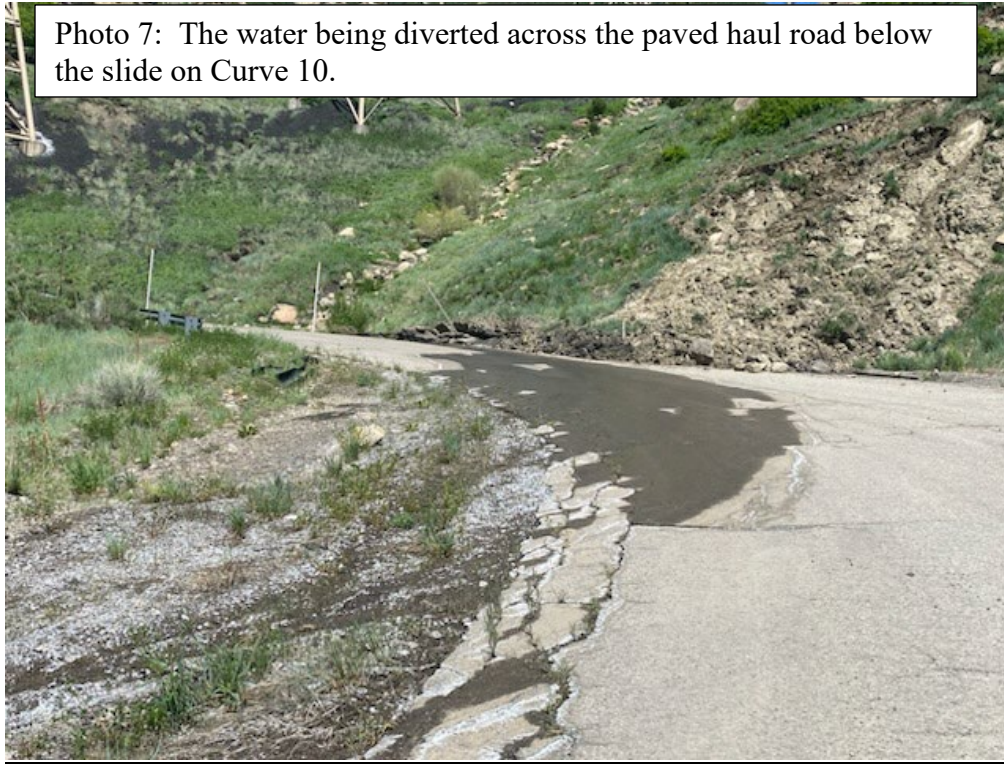


Photo 8: The small slide above Curve 11.



Number of Partial Inspection this Fiscal Year: 7

Number of Complete Inspections this Fiscal Year: 3

Photo 9: The oil leak found under the loader at the Bowie II Portals Bench.

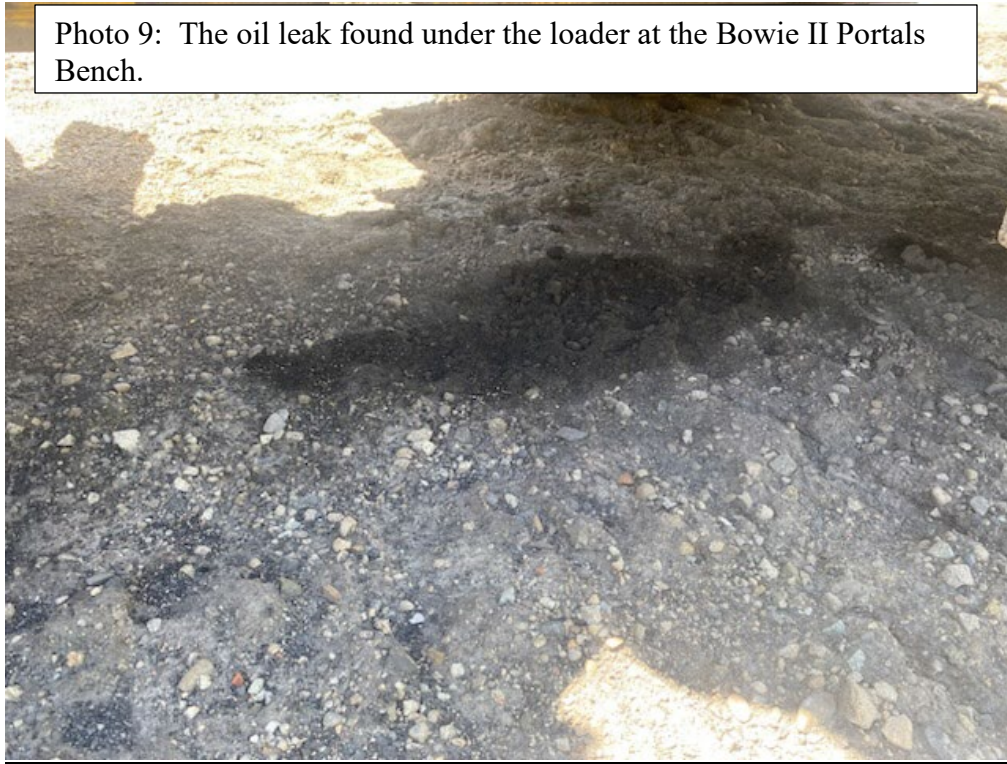
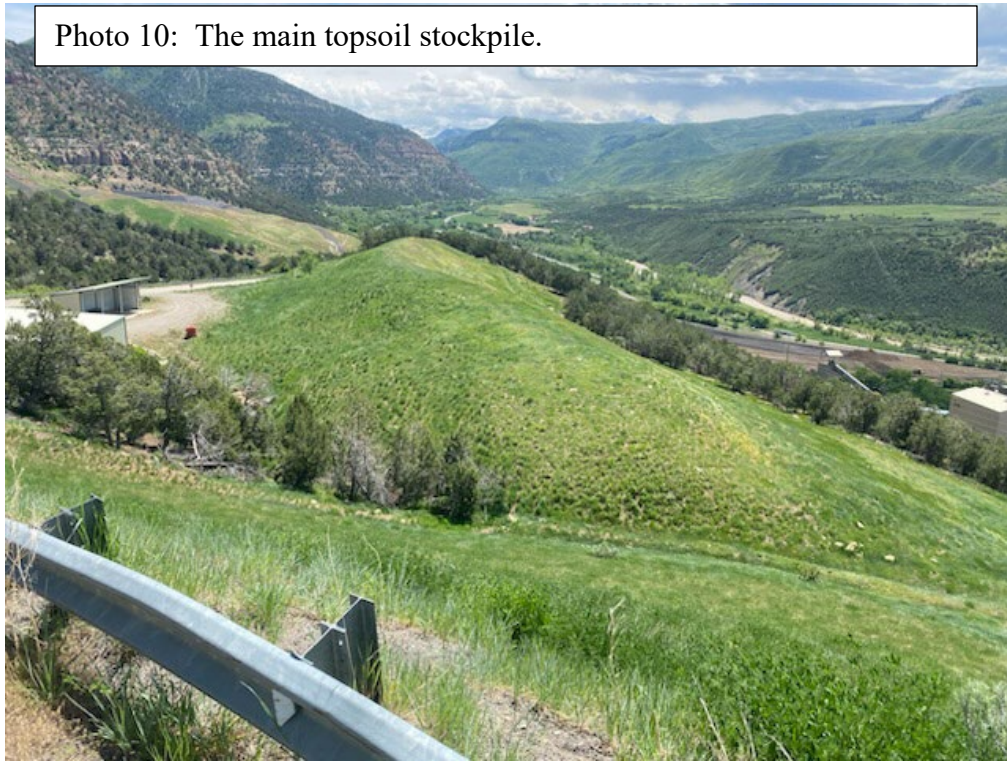


Photo 10: The main topsoil stockpile.



Number of Partial Inspection this Fiscal Year: 7

Number of Complete Inspections this Fiscal Year: 3