



---

## Goldpark King No. 2 Revised Trenching Program 5/31/23 CDRMS File P-2023-004

---

**CHARLES GWYN SPIELMAN** <COGSPIEL@msn.com>

Thu, Jun 1, 2023 at 1:24 PM

To: "elliott.russell@state.co.us" <elliott.russell@state.co.us>, "rogle@blm.gov" <rogle@blm.gov>

June 1, 2023

To: Elliott Russell CDRMS

Ray Ogle USBLMFO

From: Charles Spielman Claimant/Owner, Goldpark King No. 2

Good Morning, Gentlemen,

Elliott has asked that I prepare a Trenching Program with all the revisions and supplements reflecting the guidelines and instructions from both CDRM and USBLMFO. I've done that, in the Final Trenching Plan document, attached. I have also e-mailed each of you a draft copy of the revised trenching plan which includes a map of Goldpark King No. 2 and a detailed plan of a typical trenching site; the map of Goldpark King No. 2 reflects the reduction from three down to two trenching sites, and the removal of the 2,900-foot access road. I expect the affected ground at each site will remain the same as originally planned.

In his e-mail of May 30<sup>th</sup> Elliott asked for an estimate of the offsite water to be provided by the gold panners. I have enlisted a volunteer crew of some 22 panners; the weighted average of panners scheduled to be working each day is just over 8. I have asked the panners to furnish, from their respective houses or lodging, a water cooler of household water each day, about 15 gallons. Over the 11 days now scheduled for trenching and panning, that would amount, potentially, to about 1,300 gallons of offsite water supplied. I believe we will use far less than that for the panning operation.

In the revised plan I have provided a new seed mixture that eliminates Canada bluegrass seed and adjusts for that by slight increases in the other seed percentages. The elimination of Canada bluegrass is based on my phone conversation with an Arkansas Valley Seed representative, who said that Canada bluegrass was the only introduced (non-native?) species in the proposed seed mix. Settling on a seed mix approved by all parties shouldn't be an obstacle to approval now of the revised plan, as we will have ample time to agree on a seed mixture before planting the seed mix in October.

Elliott has also requested that the USBLMFO acknowledge approval, or approval with conditions, of all of the revisions and supplements incorporated in the revised plan attached herewith. And he has asked that the USBLMFO provide formal recognition of our claimant/owners' right to occupy the surface on Goldpark King No. 2. I believe that right has been established by the location of, and the maintenance, and development of, the claim in conformance with appropriate provisions the Mining Law of 1872; but I am agreeable to a formal recognition of that right by the USBLMFO.

I leave for Fairplay today, and will meet with the wetland delineator onsite tomorrow, June 2<sup>nd</sup>. The results of the day's work will determine whether the SW-NE trenches at each site will cross, or stay clear of, the drainage trace in the bottom of Park Gulch on our claim.

The hydraulic excavator, configured to dig trenches up to 30 feet in depth in the alluvial gravels on Goldpark King No. 2, will be supplied by Wagner Caterpillar. Several weeks ago, Jacob Wendel, our excavation contractor, and I agreed that June 2<sup>nd</sup> is the latest date by which should notify Cat to transport the excavator to the site, in order start digging on or about June 5<sup>th</sup>.

That date is now upon us, and I believe we have responded adequately to the guidelines and requests of both the CDRMS and USBLMFO. I believe it is both reasonable and logical to ask both agencies for timely approval, or approval with conditions, of our revised and supplemented trenching program.

Thank you both for your assistance in moving toward our Claimant/Owners' ultimate goal: to develop and begin a commercial placer mining and gold recovery operation on Goldpark King No. 2.

Regards,

Charlie Spielman

Sent from [Mail](#) for Windows



**Goldpark King No. 2 - Revised & Supplemented Evaluation Trenching Program, June, 2023 - May 31, 2023.docx**  
36K

**EVALUATION TRENCHING PROGRAM**  
**GOLDPARK KING NO. 2 PLACER CLAIM**

**JUNE 5 - 15, 2023**

**Revised & Supplemented**

**In Accordance With CDRMS & USBLMFO**

**Requests & Guidelines To Date**

**Final Plan: May 31, 2023**

*(Note: all information contained in this document, including the attached map & trenching site plan, should be considered as **CONFIDENTIAL**. Revisions from, and supplemental to, the original Evaluation Trenching Program, submitted March 20, 2023, are shown in **boldface** type.)*

Previous hand-dug pits and geophysical surveys on the Goldpark King No. 2 Placer Claim have indicated the presence of substantial alluvial gravels, overlain by 10-20 feet of topsoil in and along the bottom of Park Gulch on the claim.

The objective of the subject trenching program is to further evaluate the economic potential of ~~these~~ alluvial gravels, specifically, are they extensive enough and do they contain sufficient placer gold to warrant a mining and recovery operation.

The trenching program will consist of digging trenches at **two** sites on the claim: No.1- near the middle of the claim and near the middle of Park Gulch on the claim; and No. 2- near the Northwest corner of the claim.

A Cat 326 hydraulic excavator, or equivalent machine, configured to dig up to 30 feet below its track level, will be used for the trenching. Cutting Edge Excavation, of Shawnee, CO, has agreed to act as excavation contractor to provide and operate the equipment required for digging and backfilling the trenches. **No fuel or lubricant will be stored onsite during the trenching program, but the contractor will carry a spill kit , consisting of two bags of cat litter, on the excavator, in case of minor spills.**

At each site, a trench about 50-60 feet long will be dug in the placer gravels, at an angle of N 45 degrees E across the trend of the gravels and Park Gulch. A second trench will be dug from the middle of the first trench and extending 30-35 feet parallel to the gravel trend, about S 45 degrees E.

Unknown when the trenching program was planned, the USFWS has indicated a possible wetland located in a narrow band in the drainage trace along the bottom of Park Gulch on Goldpark King No. 2. A wetland delineator has been engaged to determine (on June 2, 2023) whether or not the USFWS is, in fact, an actual wetland at the location, for 100 feet on either side of the proposed NW-SE trench at each site. If the wetland delineator confirms the USFWS indication, the trenches at each site will be located on one side or the other of the delineated wetland. If there is no confirmation of The USFWS indication, the SW-NE trenches at each site will cross the drainage trace.

In order to access the gravels and maximize the digging reach of the excavator, the topsoil will be removed first and set aside, **stockpiled in accordance with the CDRMS guidelines regarding side slopes not steeper than 3H:1V where permitted by the topography.** To accomplish this, the excavator will dig a two-bucket width trench in topsoil and dig out enough topsoil at each excavator set to allow room for 360-degree rotation of the excavator.

The surface disturbance resulting from the excavation at each site and the approximate locations of the **two** trenching sites are shown on the following map and typical site plan.

Bulk samples of the gravels will be collected and placed in piles for each five-foot depth increment of gravel. Representative splits of each sample pile will be panned to estimate the amount of placer gold present. Small prospecting sluices (called highbankers) may be used to extract the gold in the samples. This will speed up the gold recovery and analysis process. **Whether we use gold panning or highbankers, we will use only water brought to the site to separate gold from gravel. We will not use groundwater, if the groundwater table is intersected by a trench. Digging**

**below the groundwater table is acceptable to the DWR, in excavations done for purposes like prospecting.**

**After the gravel samples have been analyzed, they will be backfilled into the trenches, usually within 2-4 days, not more than 6 days, using either a skid-steer front-end loader or the contracted hydraulic excavator. During the time the trenches are open, we will construct temporary T-post and clothesline rope fences to keep antelope or people from falling into them.**

**Following guidelines of the CDPHE, we have determined that, because the trenches have limited surface footprint, and will be open only a few days before backfilling and replacement of topsoil, no stormwater discharge permit is required**

**We expect about 25 per cent swell of the gravel to occur as it is dug. We also anticipate that the trenches will be about 30 feet deep in the gravels (Trenching will be in gravel only, and will not continue into the underlying basement rocks.) As a result, we expect that, if we replace about 1-2 feet of topsoil, there will likely to remain a pile of excess topsoil at each trenching site. If so, this will be flattened to a pile with gentle side slopes. (3h:1v. wherever feasible, depending on the topography.)**

**The attached typical site plan shows, for each trenching site, the estimated surface disturbance directly caused by excavation, and the surface area affected by light grading, movement of personnel and equipment, and placement of gravel and topsoil piles. The general location of piles of excess topsoil and 6-12 inches of topsoil and surface vegetation are shown on the attached site plan. All together, the surface area affected by trenching and related activities is estimated to be as listed below.**

**We plan to have both personnel carriers and the hydraulic excavator access the trenching sites by traveling "overland," not requiring construction of an access road. This will limit the impact of site access to only flattening of vegetation and, possibly, compacting the topsoil. As a result, the total surface area requiring reclamation in the two trenching sites is likely to be less than 0.3 acre. The**

affected area involved in the **two trench sites** will be regraded to contours approximating the original ground surface – **but allowing for estimated settling - by June 15, 2023**, as an essential part of the trenching program. No further earthwork should be necessary on these sites. To limit erosion, the area affected by the trenching operation will be seeded in the fall of 2023, likely in October, **to optimize regrowth of vegetative cover, in the spring of 2024.**

A seed mixture recommended by **the USBLMFO, but revised to exclude non-native Canada Bluegrass, will be used. It will consist of:**

<b>Annual Ryegrass</b>	<b>24%</b>	<b>Slender Wheatgrass</b>	<b>18%</b>	<b>Crested Wheatgrass</b>	<b>14%</b>
<b>Mountain Brome</b>	<b>10%</b>	<b>Hard Fescue</b>	<b>10%</b>	<b>Prairie Sandreed</b>	<b>8%</b>
<b>Indiangrass</b>	<b>6%</b>	<b>Blue Grama</b>	<b>6%</b>	<b>Switchgrass</b>	<b>4%</b>

**This Mixture will be applied at a rate of 25 lb per acre.**

In addition to the equipment and workers required on the claim, we will have placed along or near the **Park Gulch drainage trace**, somewhere between trenching sites1 and 2, a self-contained portapotty; and we **will** place a small self-contained camp trailer on the flat higher ground on the claim northeast of Park Gulch. This trailer will be used for the temporary housing of personnel. Neither facility should cause any appreciable surface impact.

#### **Two final notes:**

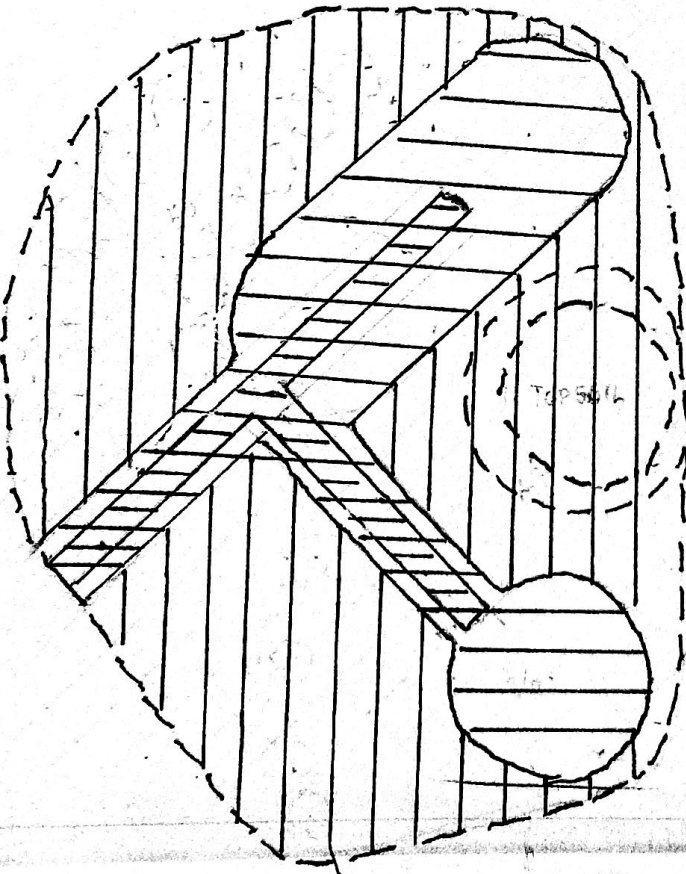
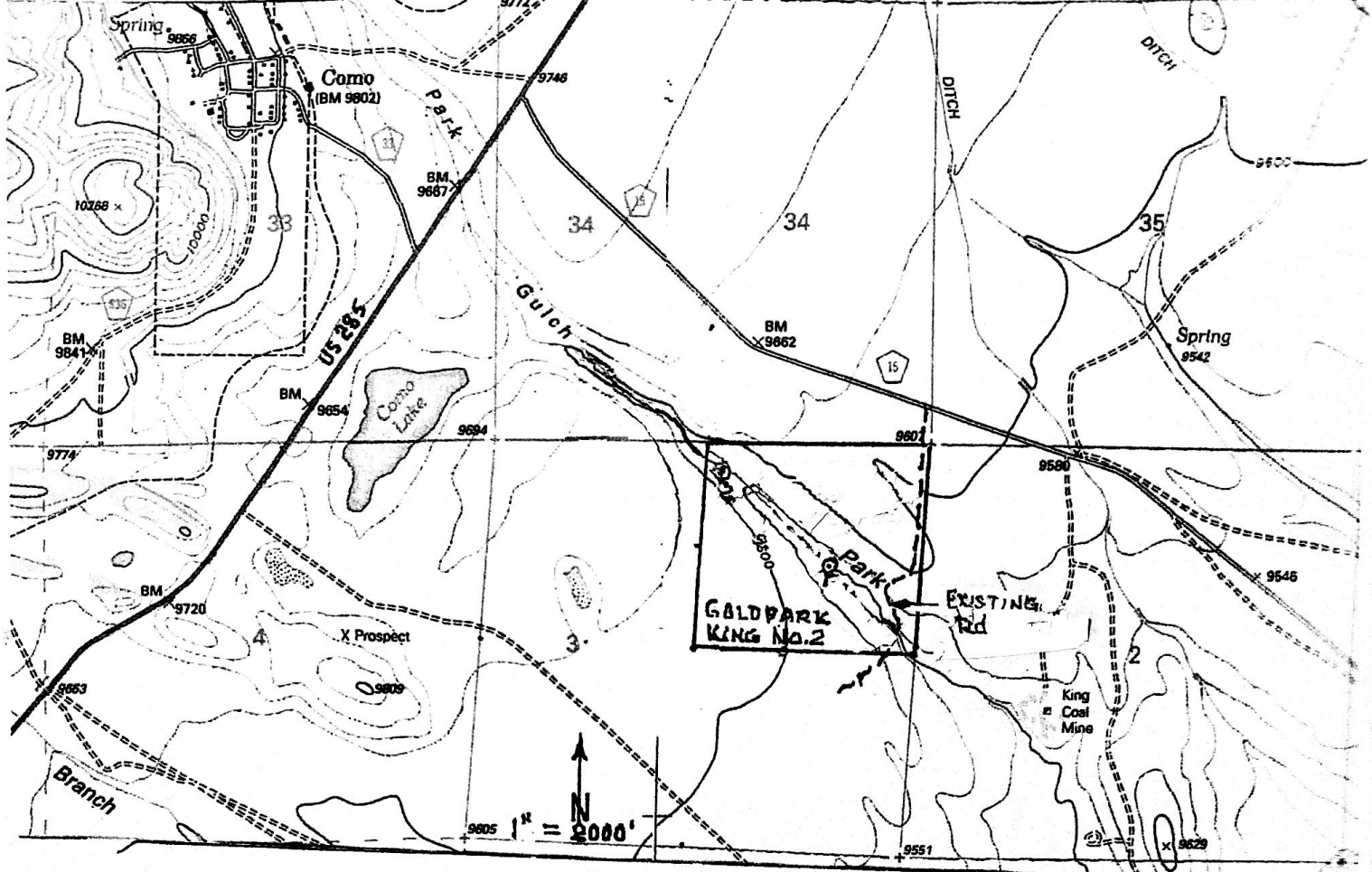
- 1. We have observed cattle grazing on the claim in July, but don't know if the grazing lessee usually has his herd in the area in June. it would be appreciated if the USBLMFO would ask the grazing lessee to hold off putting cattle on the claim until after June 20th. This should be desirable for both our program and the lessee's land use as well.**
- 2. This revised and supplemented Trenching program was prepared by Charles Spielman, one of eight claimant/owners of Goldpark King No. 2. He is authorized by the other seven claimant/owners for the preparation and**

**revision of this Evaluation Trenching Program document, in accordance with the requirements of the CDRMS and USBLMFO.**

Attachments: (1). Portion of USGS topographic maps showing Goldpark King No. 2 placer claim, surrounding area data, and the **two** trenching sites.

(2) Detailed trenching site plan.

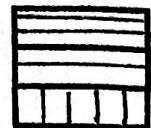




#### TYPICAL TRENCHING SITE PLAN

Showing planned excavation surface  
impact & related surface effect caused by  
movement of eqpt and personnel, stockpiling,  
sample testing, and minor grading.

Trenching in Gravel  
Excavation of Topsoil  
Related Surface Effect



North ↑  
Scale: 1" = 20'