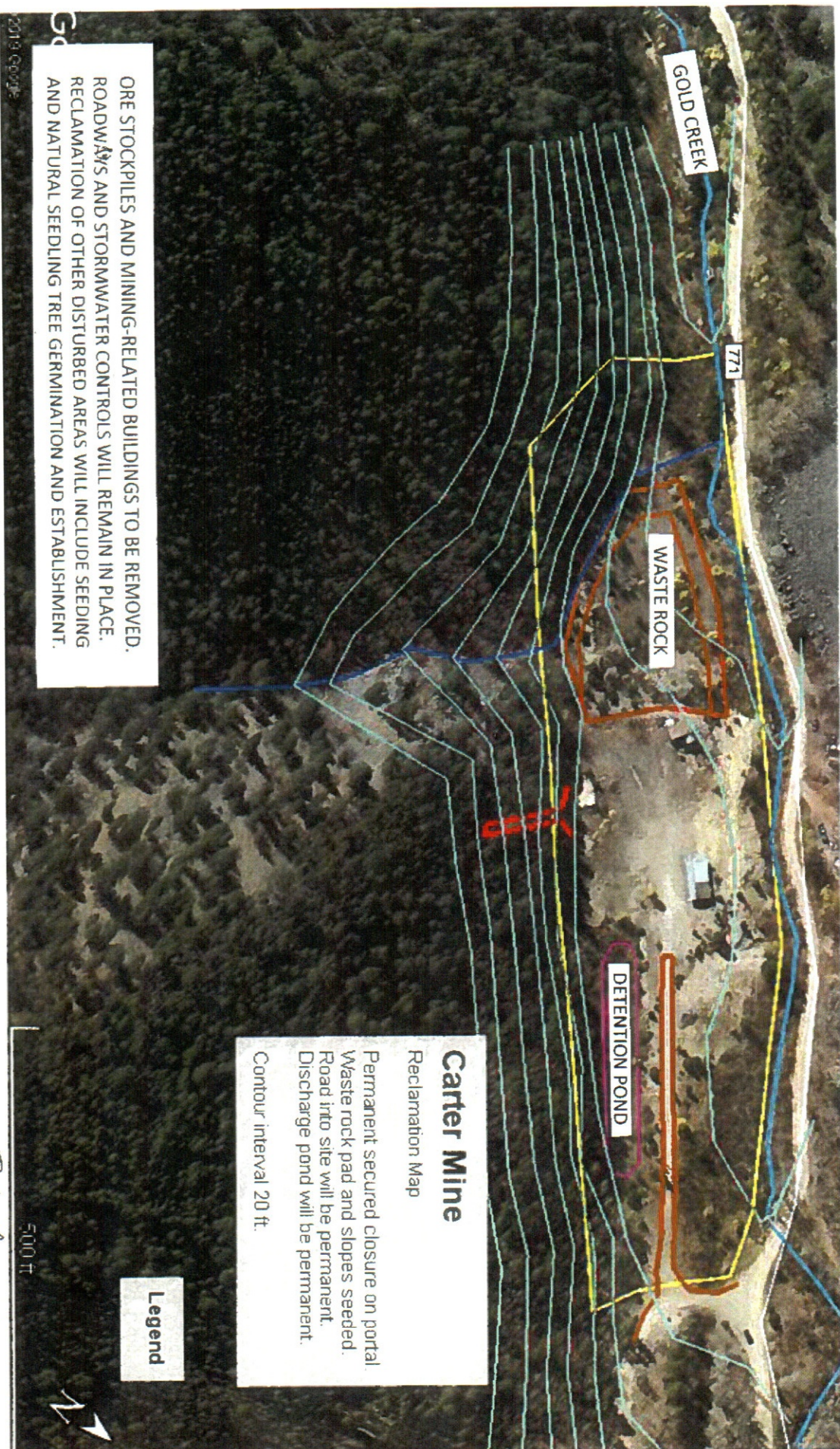


M-2020-014 2022 map

BY Jacobs Wilkinson
x Sarah Hill
6-6-2023



CARTER MINE RECLAMATION MAP

EXHIBIT E.6

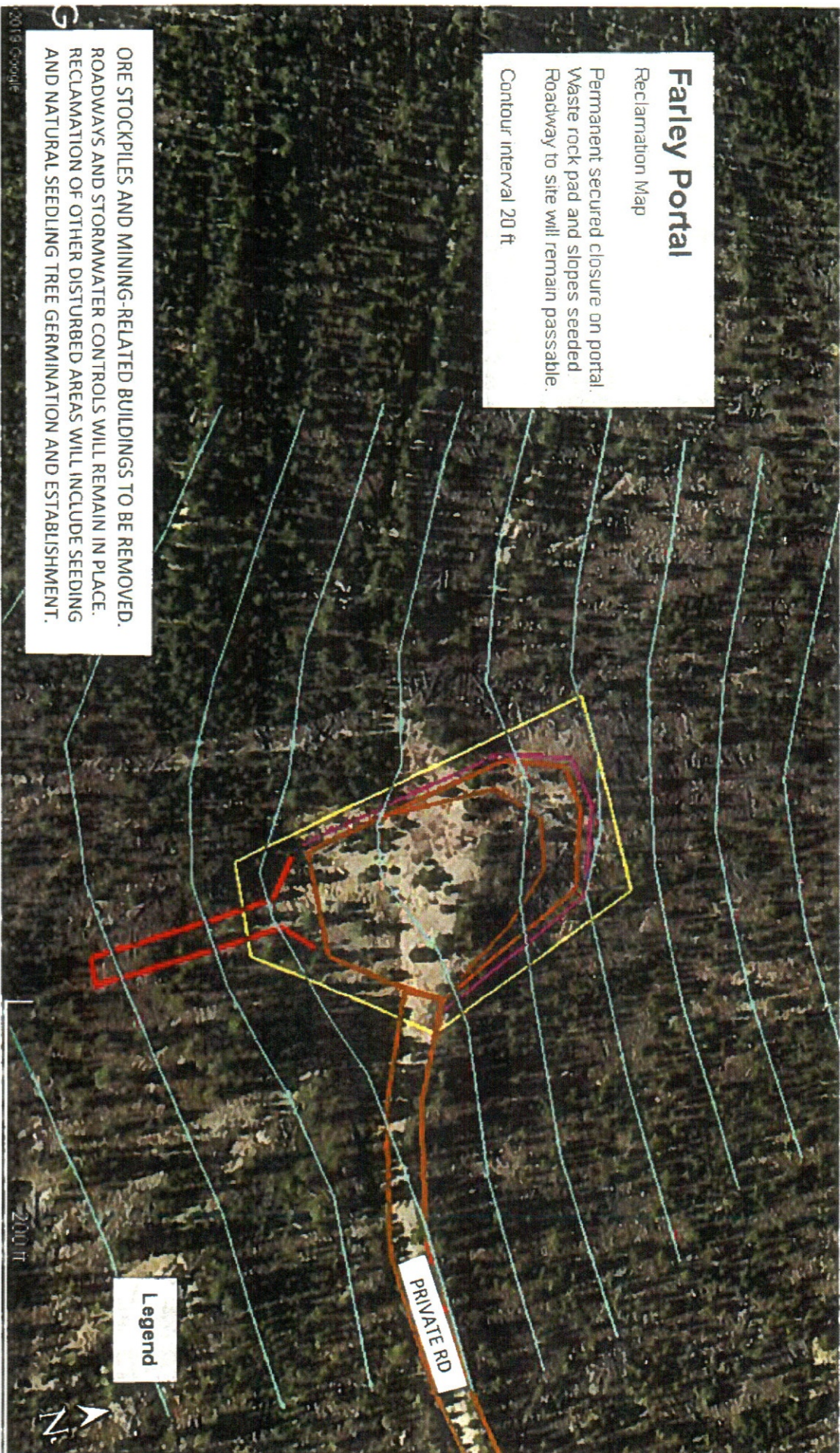
Map prepared by Bob Oswald, High Country Consulting Services LLC

Bob Oswald
on 1/29/20 (date)

M-2020-014 2022 MAP

BY SA COR with (in San) x SWS Hill

6-6-2023



FARLEY PORTAL RECLAMATION MAP

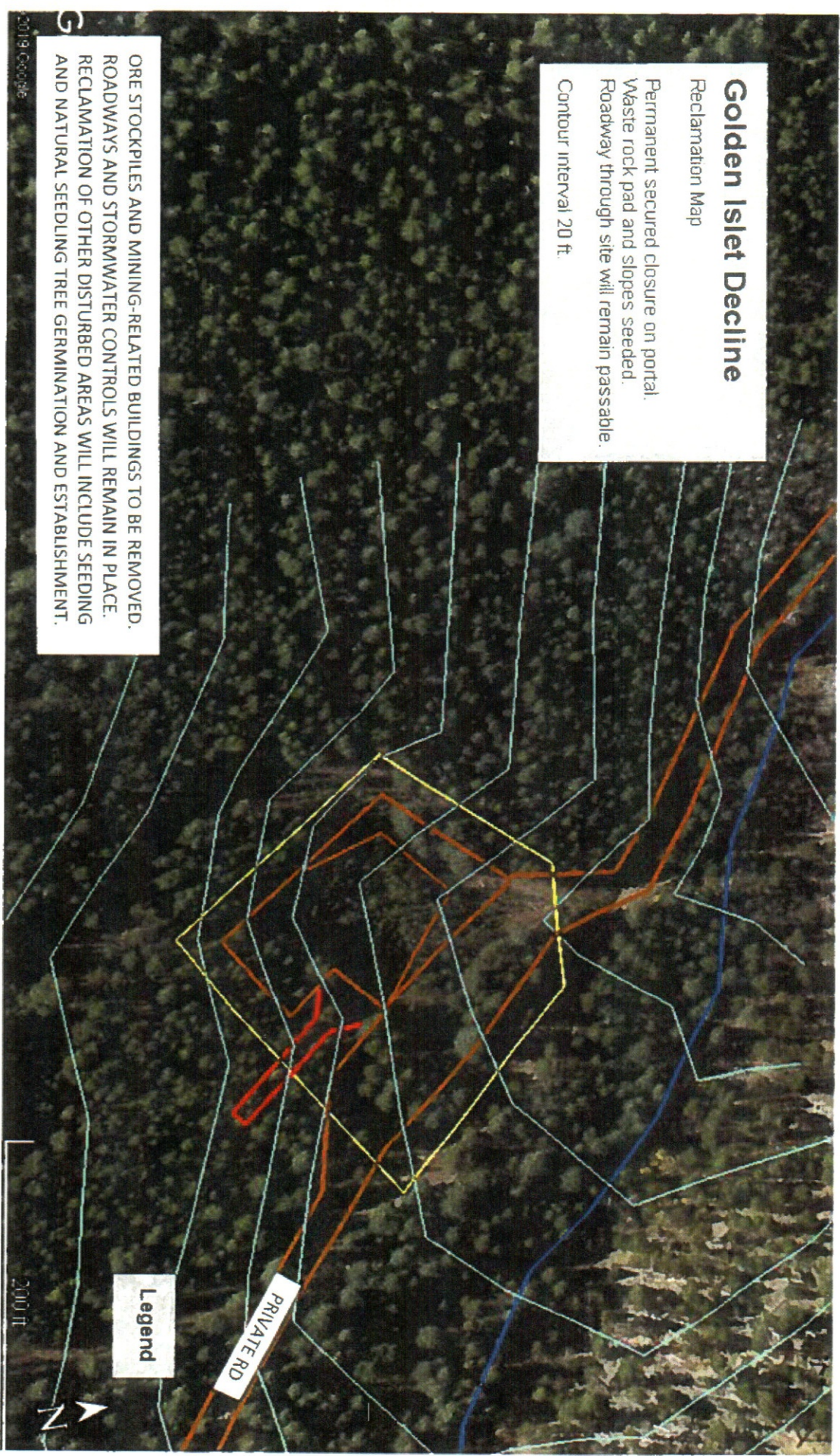
EXHIBIT E.7

Map prepared by Bob Oswald, High Country Consulting Services LLC

on 1/29/20 (date)

M-2020-014 2022 MAP

BY Saccos Wilkinson
X Saccos Wilkinson
6-6-2023



Golden Islet Decline

Reclamation Map

Permanent secured closure on portal.
Waste rock pad and slopes seeded.
Roadway through site will remain passable.
Contour interval 20 ft.

ORE STOCKPILES AND MINING-RELATED BUILDINGS TO BE REMOVED.
ROADWAYS AND STORMWATER CONTROLS WILL REMAIN IN PLACE.
RECLAMATION OF OTHER DISTURBED AREAS WILL INCLUDE SEEDLING
AND NATURAL SEEDLING TREE GERMINATION AND ESTABLISHMENT.

Legend

PRIVATE RD

200 ft

© 2019 Google

GOLDEN ISLET DECLINE RECLAMATION MAP

Map prepared by Bob Oswald, High Country Consulting Services LLC

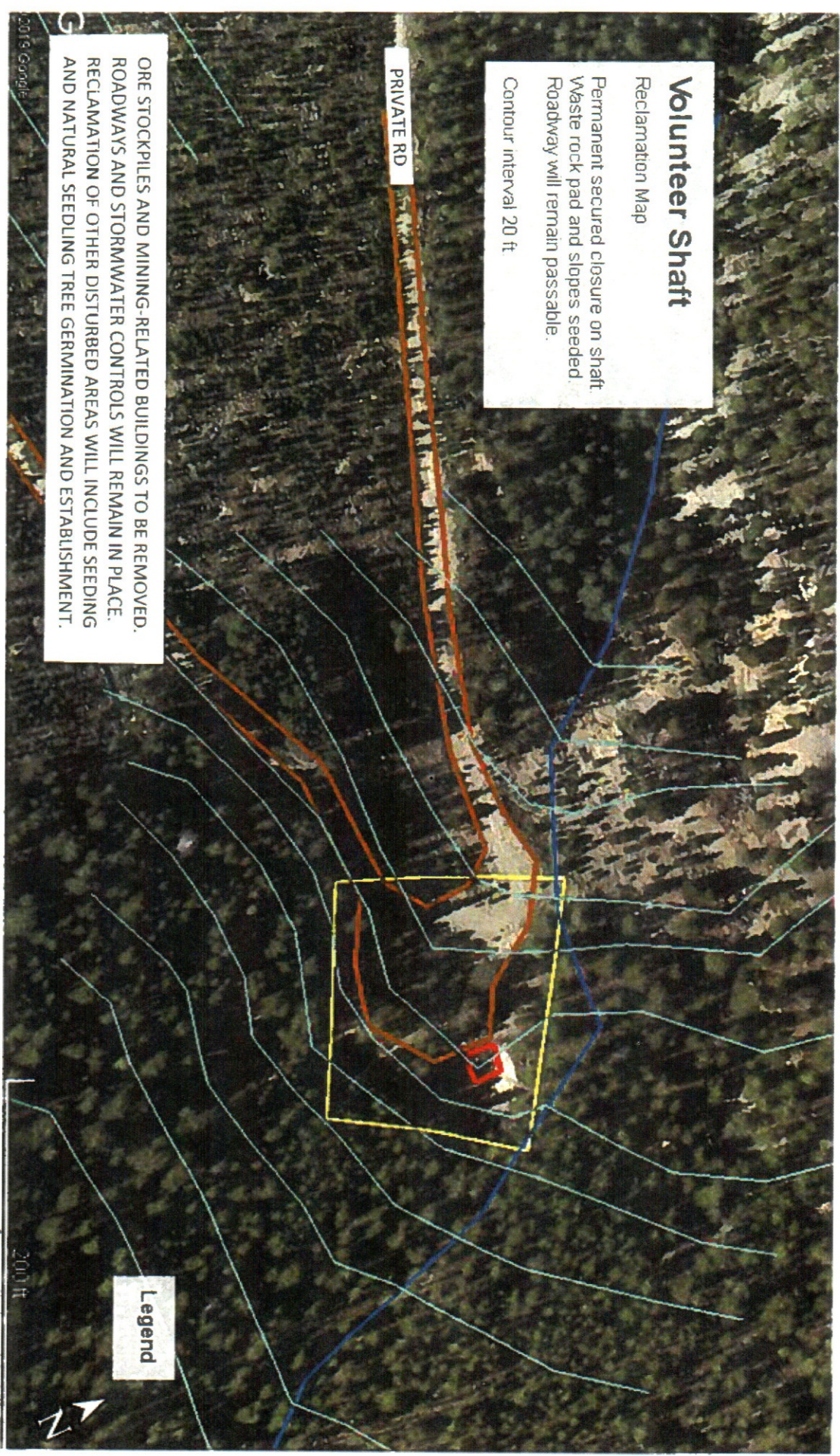
Bob Oswald

EXHIBIT E.8

, on 1/29/20 (date)

M-2020-014 2022 map

BY SACS Wilkinson
x Smith Hill
6-6-2023



VOLUNTEER SHAFT RECLAMATION MAP

Map prepared by Bob Oswald, High Country Consulting Services LLC

Bob Oswald

on 1/29/20 (date)

M-2020-014 2022 map

BY SACS Wilkinson
x Smithell
6-6-2023

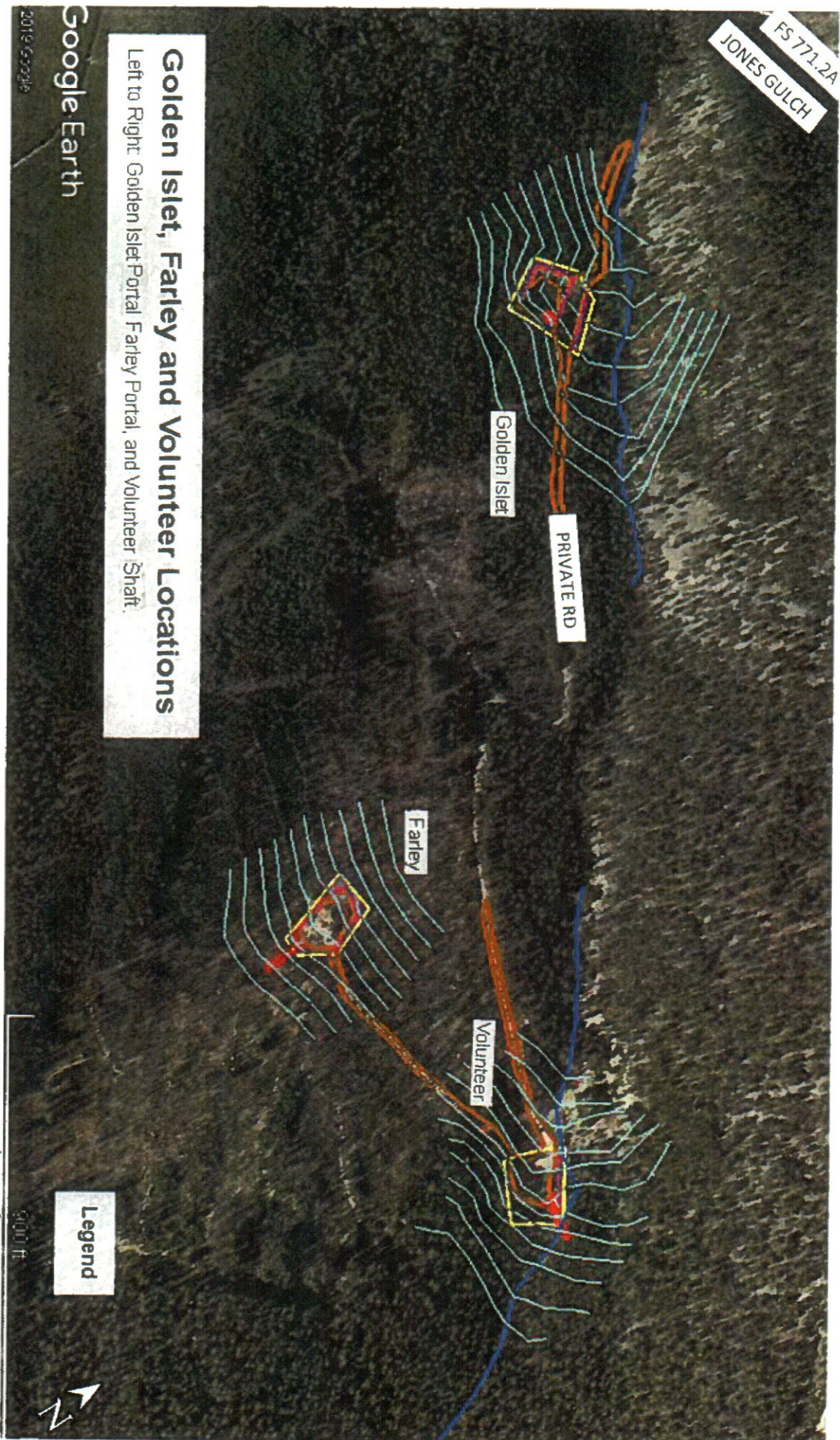


EXHIBIT E.10

Map prepared by Bob Oswald, High Country Consulting Services LLC

Bob Oswald
on 1/29/20 (date)