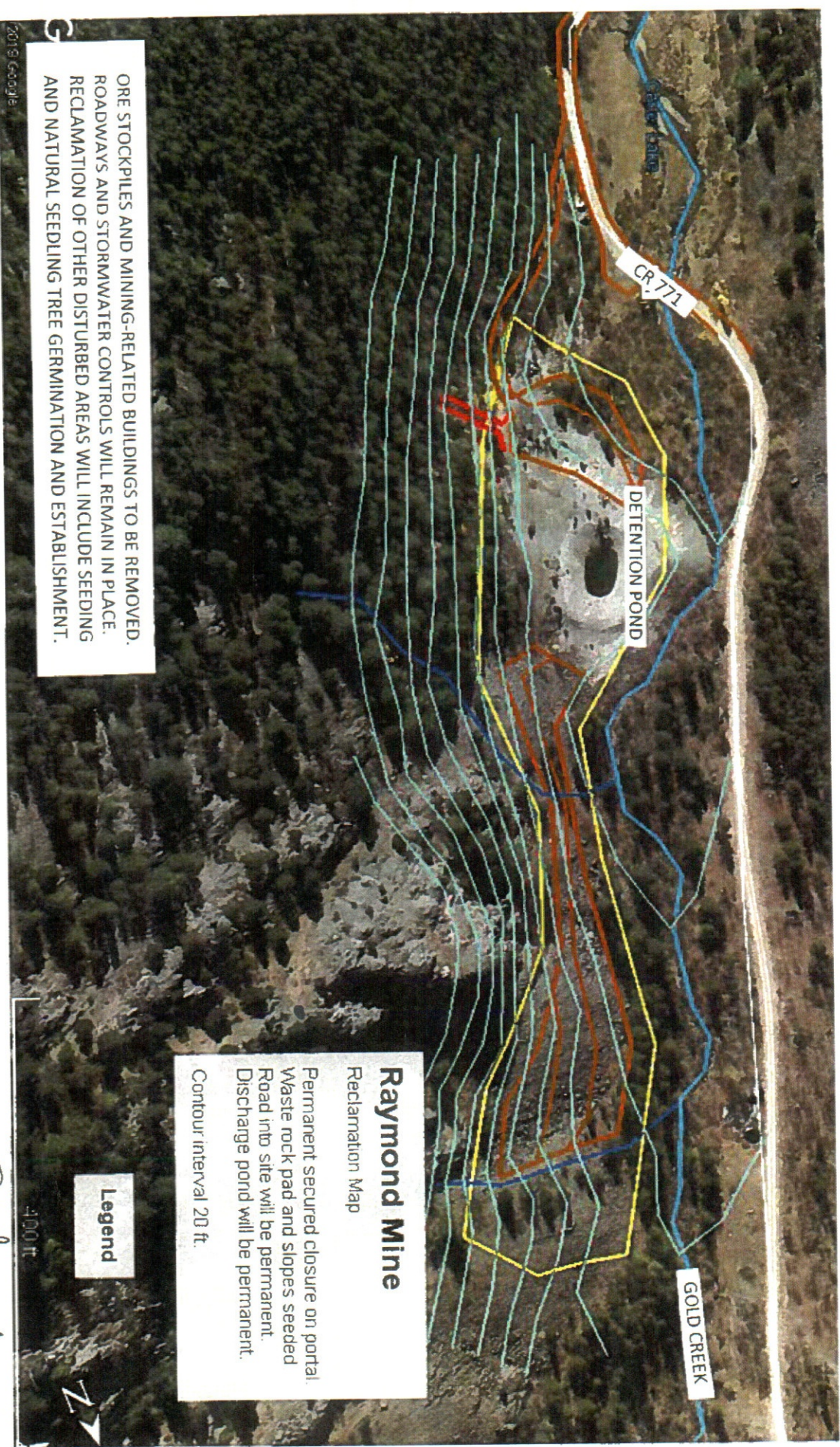


M-2020-013 2022 MAP BY Jacobs Wilkinson

X *[Signature]*

6-6-2023



ORE STOCKPILES AND MINING-RELATED BUILDINGS TO BE REMOVED. ROADWAYS AND STORMWATER CONTROLS WILL REMAIN IN PLACE. RECLAMATION OF OTHER DISTURBED AREAS WILL INCLUDE SEEDING AND NATURAL SEEDLING TREE GERMINATION AND ESTABLISHMENT.

Raymond Mine
Reclamation Map
Permanent secured closure on portal.
Waste rock pad and slopes seeded.
Road into site will be permanent.
Discharge pond will be permanent.
Contour interval 20 ft.

Legend

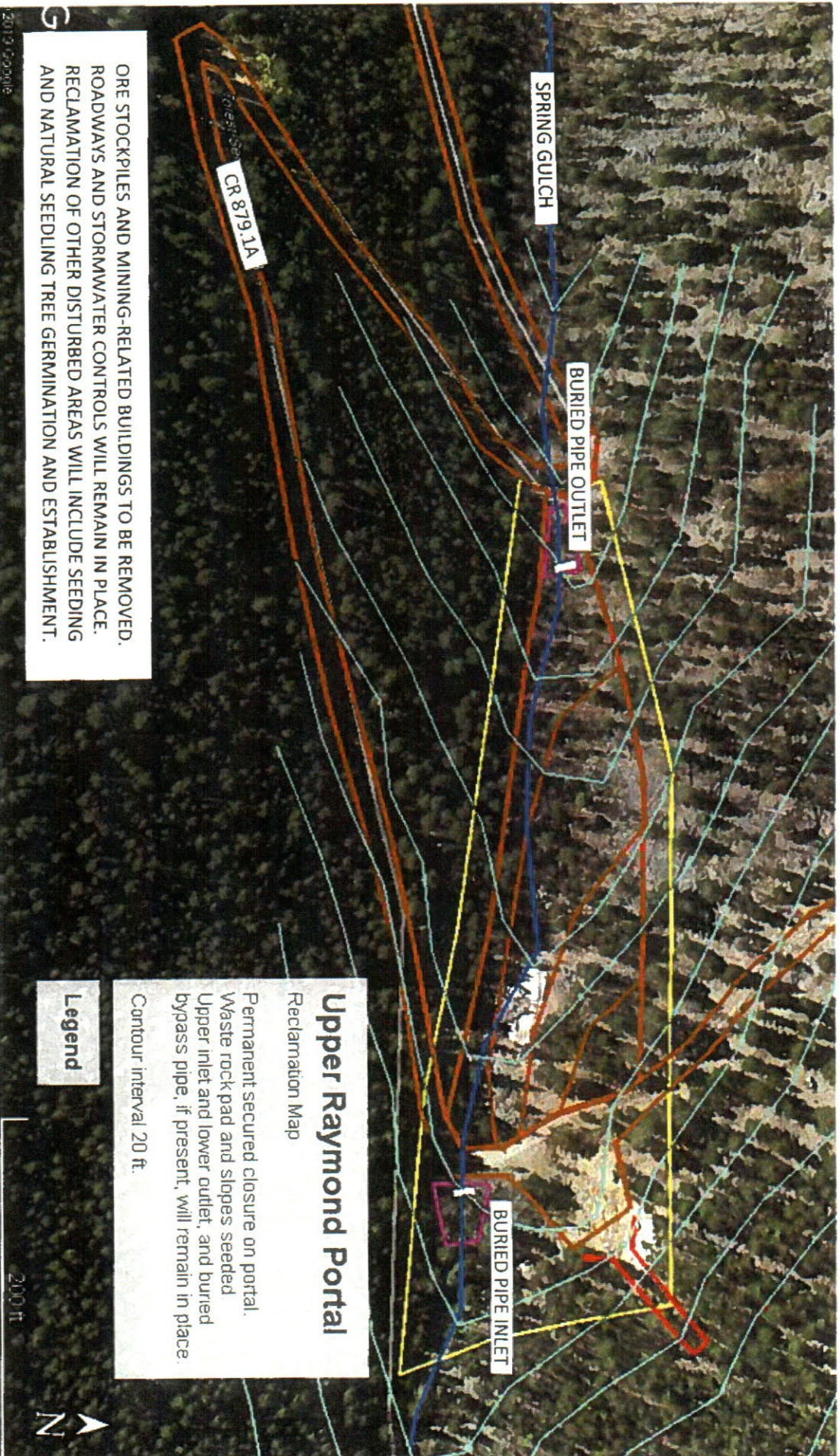
RAYMOND MINE RECLAMATION MAP
EXHIBIT E.6

Map prepared by Bob Oswald, High Country Consulting Services LLC
Bob Oswald
on 1/29/20 (date)

M-2020-13 2022 map

BY SAVERS WILKINSON
X Saver Wilkinson

6-6-2023



ORE STOCKPILES AND MINING-RELATED BUILDINGS TO BE REMOVED. ROADWAYS AND STORMWATER CONTROLS WILL REMAIN IN PLACE. RECLAMATION OF OTHER DISTURBED AREAS WILL INCLUDE SEEDING AND NATURAL SEEDLING TREE GERMINATION AND ESTABLISHMENT.

UPPER RAYMOND PORTAL RECLAMATION MAP

EXHIBIT E.7

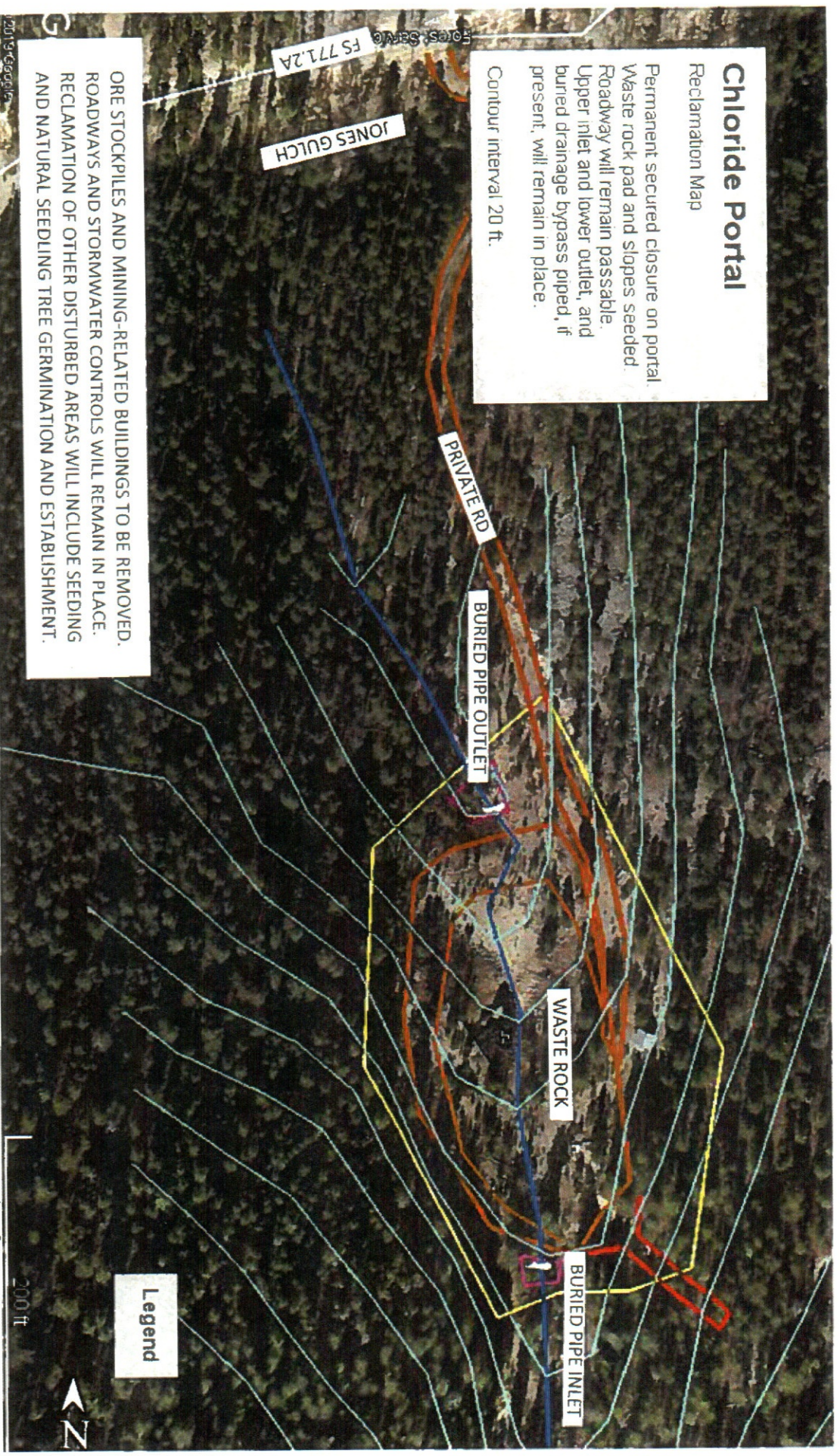
Map prepared by Bob Oswald, High Country Consulting Services LLC

on 1/29/20 (date)
Bob Oswald

M-2020-013 2022 map

BY Jacobs Wilkins & Sons
x Small

6-6-2023



CHLORIDE PORTAL RECLAMATION MAP

Map prepared by Bob Oswald, High Country Consulting Services LLC

EXHIBIT E.8

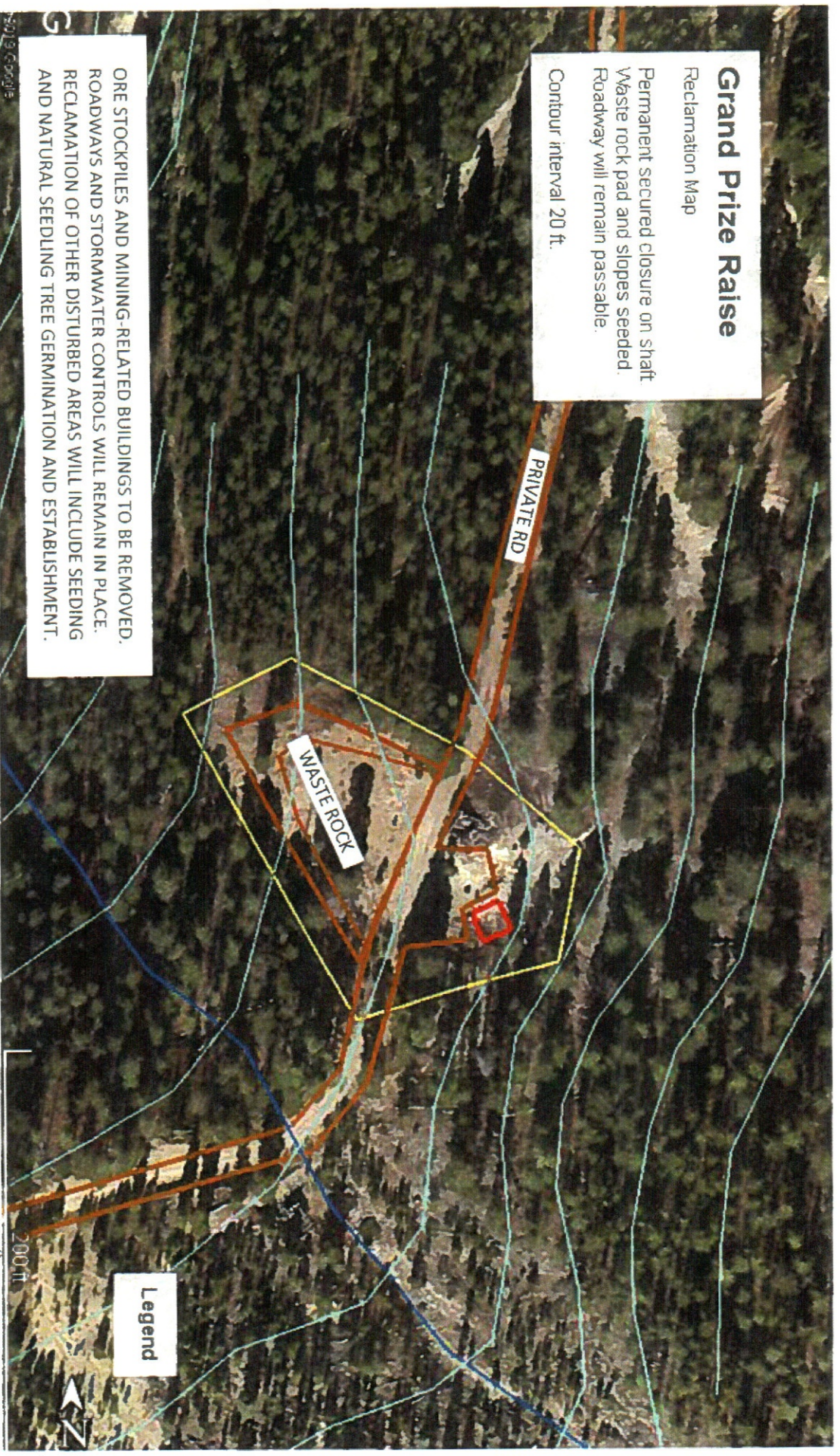
on 1/29/20 (date)
Bob Oswald

M-2020-013

2020 MAP

By Jacob Wilkinson
x Smithell

6-6-2023



Grand Prize Raise

Reclamation Map

Permanent secured closure on shaft
Waste rock pad and slopes seeded.
Roadway will remain passable.
Contour interval 20 ft.

ORE STOCKPILES AND MINING-RELATED BUILDINGS TO BE REMOVED.
ROADWAYS AND STORMWATER CONTROLS WILL REMAIN IN PLACE.
RECLAMATION OF OTHER DISTURBED AREAS WILL INCLUDE SEEDING
AND NATURAL SEEDLING TREE GERMINATION AND ESTABLISHMENT.

Legend

GRAND PRIZE RAISE RECLAMATION MAP

Map prepared by Bob Oswald, High Country Consulting Services LLC

Bob Oswald

EXHIBIT E.9

on 1/29/20 (date)

M-2020-013 2020 map

By SACOB Wilkinson
x Smithell L. 6-6-2023

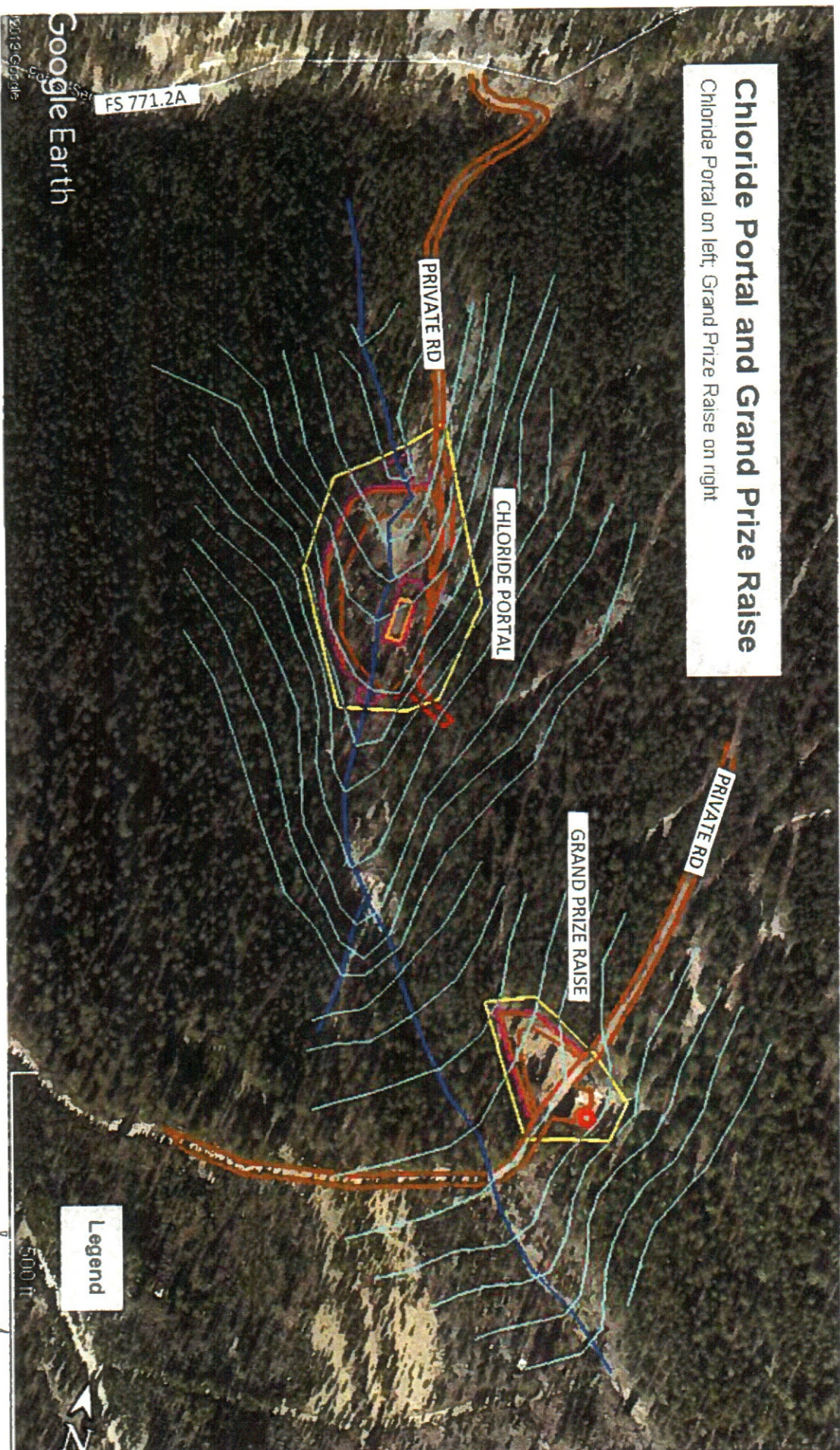


EXHIBIT E.10

Map prepared by Bob Oswald, High Country Consulting Services LLC

on 1/29/20 (date)
Bob Oswald