

ANNUAL REPORT MAP

Tucker Aggregate Pit

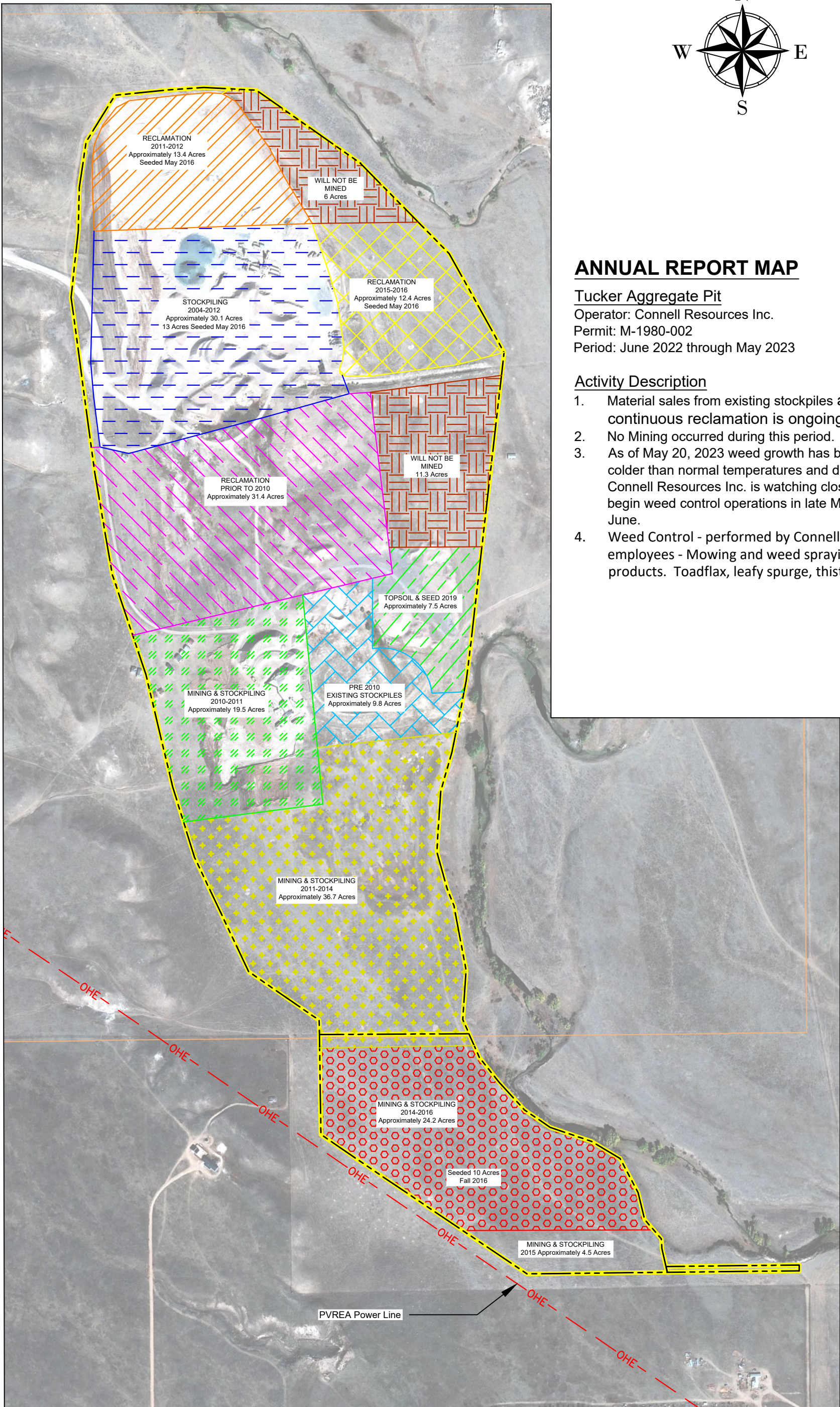
Operator: Connell Resources Inc.

Permit: M-1980-002

Period: June 2022 through May 2023

Activity Description

1. Material sales from existing stockpiles and continuous reclamation is ongoing.
2. No Mining occurred during this period.
3. As of May 20, 2023 weed growth has been slow due to colder than normal temperatures and dry conditions. Connell Resources Inc. is watching closely and will begin weed control operations in late May and early June.
4. Weed Control - performed by Connell Resources employees - Mowing and weed spraying 2-4-D products. Toadflax, leafy spurge, thistle.



*Carr (Tucker Aggregate)
M-1980-002 Annual Report
Connell Resources, Inc.
June 1, 2023*

0 50 150 250 500
SCALE IN FEET