



April 26, 2023

RE: Holcim – WCR, Inc.
Tucson South Groundwater Data

Ms. Gagnon,

After review of the Colorado Division of Water Resources - Current Conditions and Historical Data for Brighton Ditch, located immediately west of the Tucson South Project, the drop in groundwater levels for Monitoring Wells (MW) 14, 15, and 16 for the months of February and March of 2023 can be associated with the lack of discharge measured in the adjacent Brighton Ditch (flow data attached). The same fluctuations are also observed in February – March of 2022, and November 2020 – March 2021.

The sudden rise in Monitoring Well 16 in March 2023, and the drop in Monitoring Well 14 in May 2022 could be due to user error in operating the Keck Water Level Meter. The data reverts back to groundwater level norms the following month.

If you have any questions, please feel free to contact me at 702-379-4623.

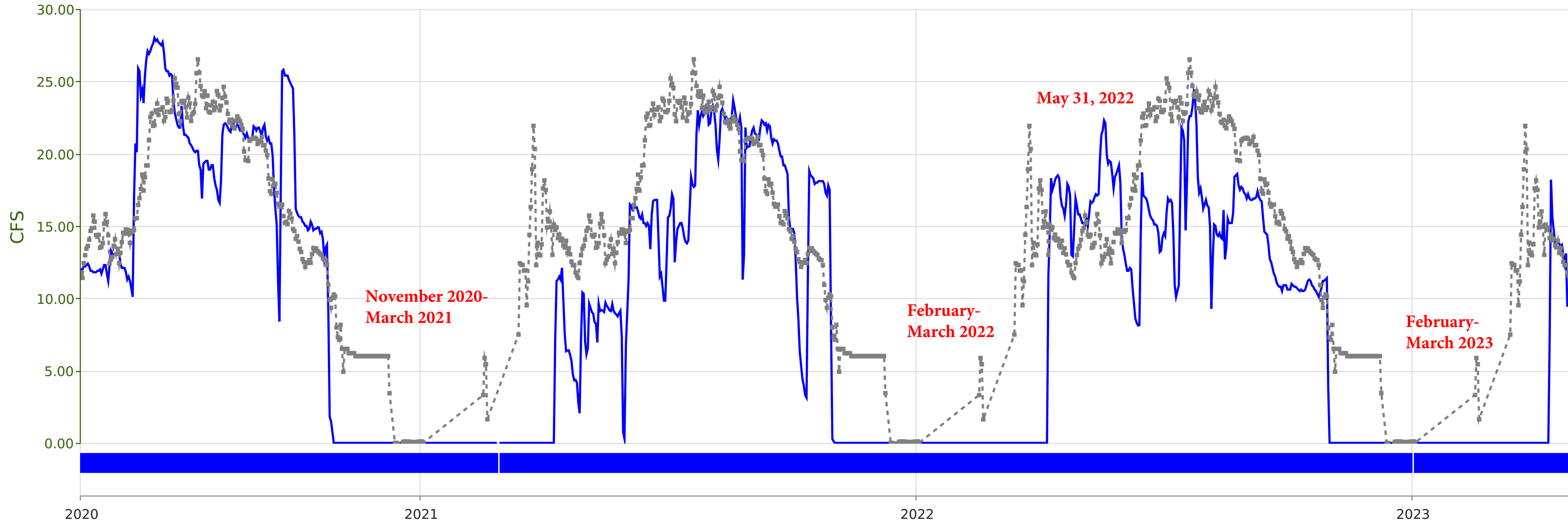
Sincerely,

A handwritten signature in black ink, appearing to read 'Wyatt R. Webster', with a long horizontal stroke extending to the right.

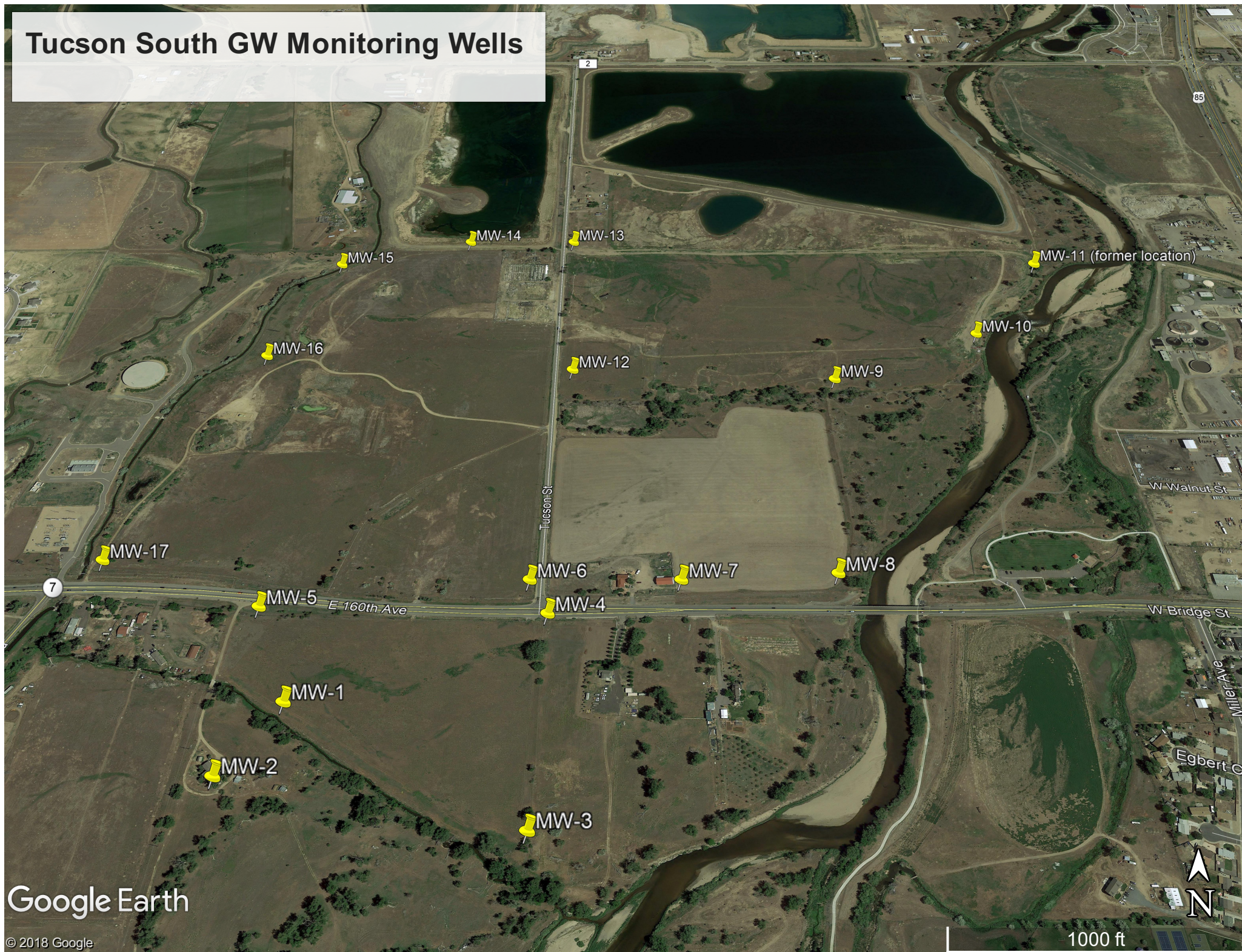
Wyatt R. Webster
Environmental & Land Manager
Holcim – WCR, Inc.

Enclosures

BRGDITCO - BRIGHTON DITCH



Tucson South GW Monitoring Wells



Google Earth

© 2018 Google