

d:\d2\projects by client\loveland ready mix\bokelman_walters\annual report\2023\2023.dwg,4/4/23

NOTES:

- WEED CONTROL -- MOWING WEEDS AS NEEDED ON AREAS SEEDED WITH GRASS AND SPOT SPRAYING FOR THISTLE AND OTHER NOXIOUS WEEDS THROUGHOUT THE MINING BOUNDARY.
- DISTURBED AREAS INSIDE SLURRY WALL REPLANTED WITH GRASS SEED. WEEDS CONTROLLED WITH MOWING AND SPOT SPRAYING FOR THISTLE AND OTHER NOXIOUS WEEDS. AREAS OUTSIDE SLURRY WALL ARE FARMED.

REFERENCE:

BACKGROUND MAPPING DATA TAKEN FROM EXHIBIT C-2, REVISION 1, DATED 4/16/15 BY WEILAND, INC. AND REVISED TO CURRENT CONDITIONS.

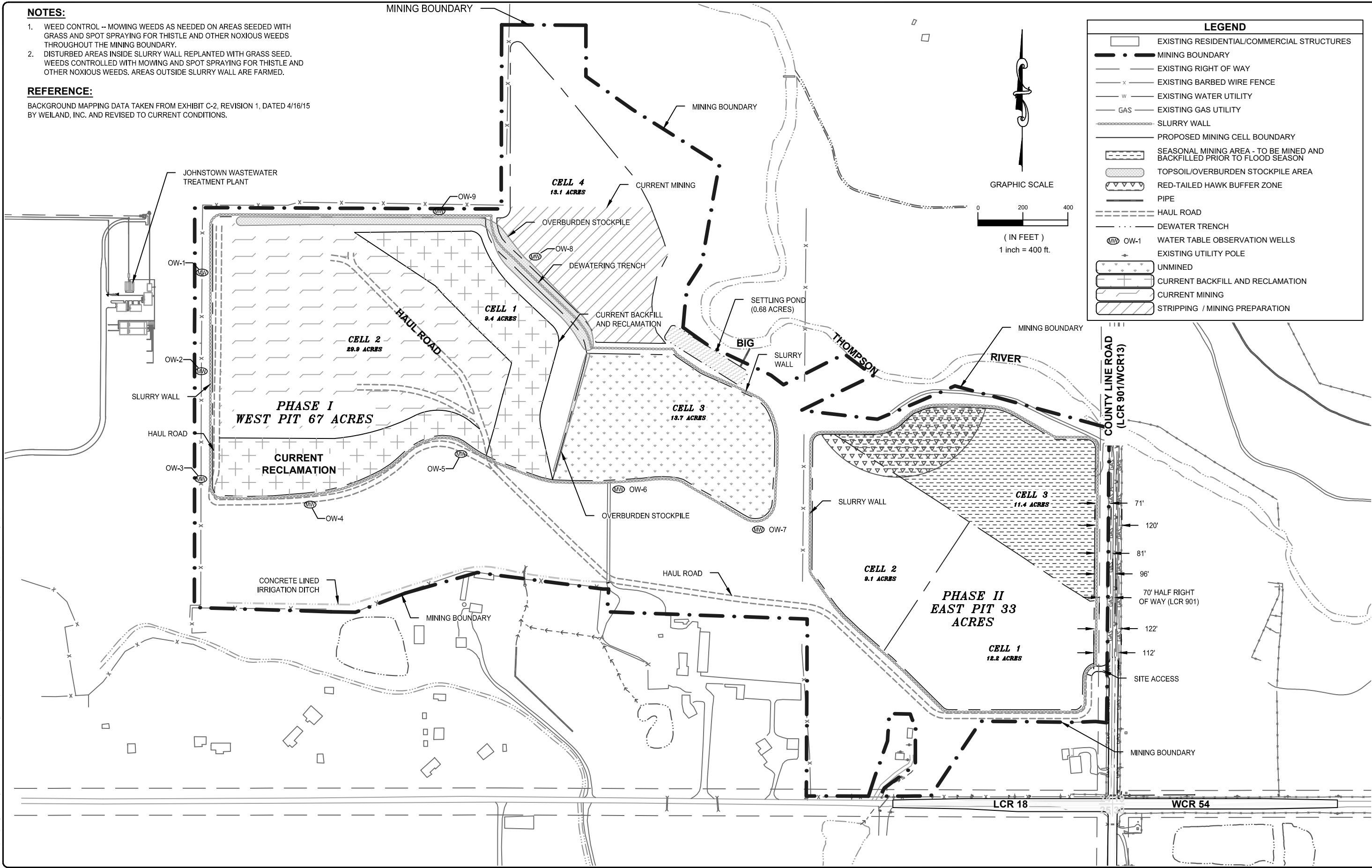


FIGURE 1

DESIGNED:	CHECKED BY:	DATE:	FILE NAME:
	SF	4/4/23	2023
	SCALE:	1" = 400'	
	SHEET NO.	1 of 1	

WALTERS / BOKELMAN PIT
2023 ANNUAL REPORT MAP

M-2006-080

LOVELAND READY MIX CONCRETE, INC.
LARIMER COUNTY, COLORADO

DATE	REVISIONS
3/29/19	UPDATED TO CURRENT CONDITIONS