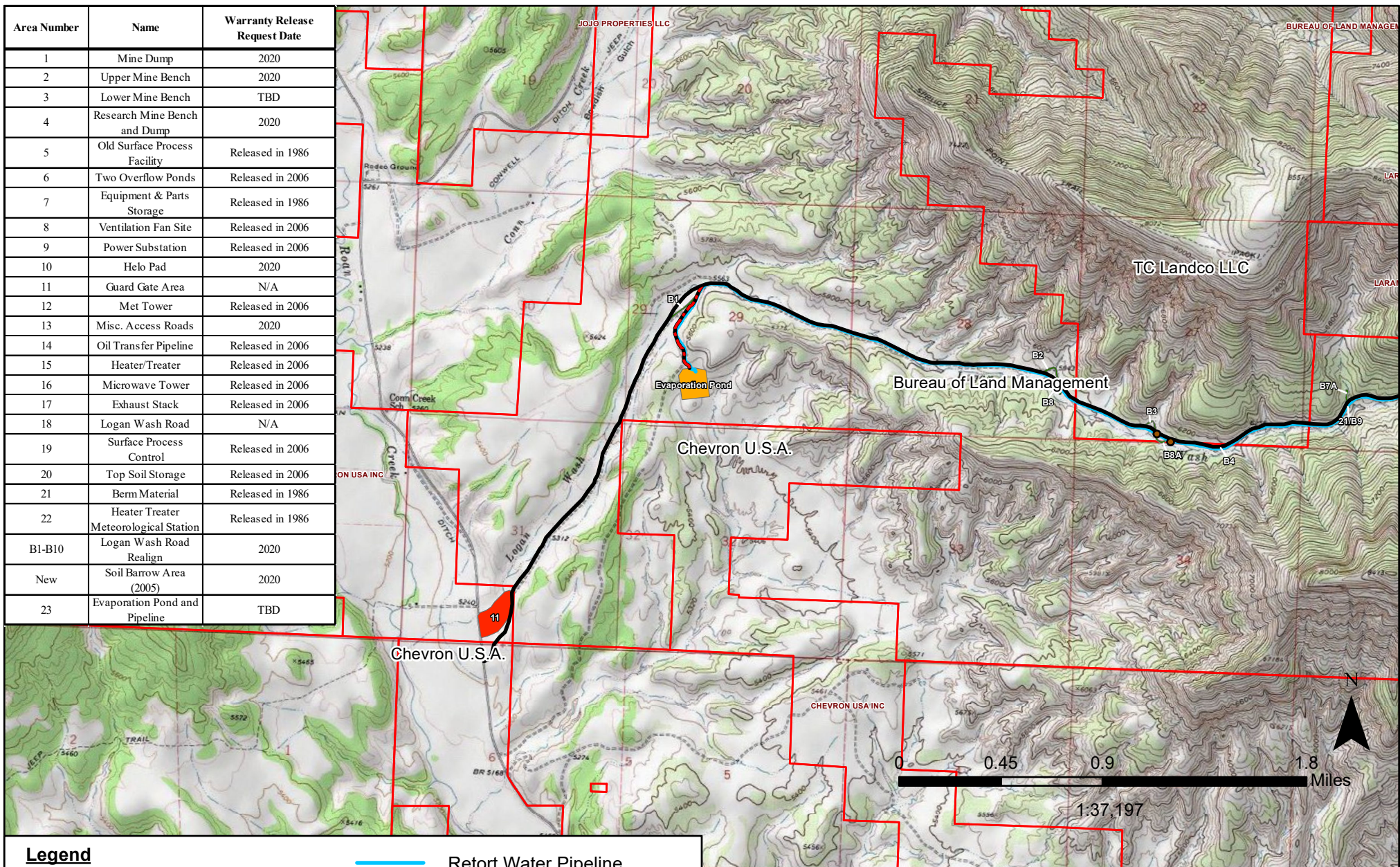


Area Number	Name	Warranty Release Request Date
1	Mine Dump	2020
2	Upper Mine Bench	2020
3	Lower Mine Bench	TBD
4	Research Mine Bench and Dump	2020
5	Old Surface Process Facility	Released in 1986
6	Two Overflow Ponds	Released in 2006
7	Equipment & Parts Storage	Released in 1986
8	Ventilation Fan Site	Released in 2006
9	Power Substation	Released in 2006
10	Helo Pad	2020
11	Guard Gate Area	N/A
12	Met Tower	Released in 2006
13	Misc. Access Roads	2020
14	Oil Transfer Pipeline	Released in 2006
15	Heater/Treater	Released in 2006
16	Microwave Tower	Released in 2006
17	Exhaust Stack	Released in 2006
18	Logan Wash Road	N/A
19	Surface Process Control	Released in 2006
20	Top Soil Storage	Released in 2006
21	Berm Material	Released in 1986
22	Heater Treater Meteorological Station	Released in 1986
B1-B10	Logan Wash Road Realign	2020
New	Soil Barrow Area (2005)	2020
23	Evaporation Pond and Pipeline	TBD



Legend



Parcel boundaries



Retort Water Pipeline
Monitoring Well

Permit Reclamation Areas

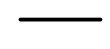


In use; not under reclamation

Roads



Reclaimed and released



Not to be reclaimed



Removed from Reclamation Plan



Reclaimed



In use; not under reclamation

Figure 4B. Logan Wash Mine Reclamation Status West Area

Garfield County, Colorado



Western Water & Land, Inc.