

STATE OF
COLORADO

Reilley - DNR, Robin <robin.reilley@state.co.us>

Williams Fork ARR Adequacy and Update

1 message

Kawcak, Miranda <MKawcak@peabodyenergy.com>
To: "Reilley - DNR, Robin" <robin.reilley@state.co.us>

Wed, May 11, 2022 at 3:38 PM

Hi Robin,

As I expressed earlier there are some issues with the acreage totals at Williams Fork. SL1 was a PH I, II, & III release on the old loadout that was located in Craig for 20 acres in 1990. These 20 acres were not accounted for on the recent technical revision that established the disturbance areas for the site. The 20 acres have been accounted for on the ARR's for many years but now they are going to pose a problem and the acreages are not going to mesh up. I have attached the updated ARR form with how I was thinking to present it but not sure if that is going to mess with your reporting. Here is a summary of the changes and my interpretations:

- **Acreage in active mining:** This number is a large jump and not a good representation of what happened in 2021 but the overall number is now correct for the number of acres that still need to be reclaimed.
- **B & G:** The totals for these are now correct with the current reclamation
- **Acreage in Long Term:** Under TR38 we made majority of the roads permanent features as well as the multi-purpose building at the 5A portal. These acreages are now up to data to reflect the acreages that are accounted for with the permanent roads and facilities. The Non permanent facilities acreage is for the ponds and drainages that can not be reclaimed until after phase II.
- **Seeding:** Totals are now current and accounts for seeding done in 1980's at the strip pit and Utah track and then in 2006-2009 reclamation. Seeding less than 10 years reflects seeding done in 2019-2021.
- **Bond Release:** the 20 acres for the Craig loadout were removed from the total since they are not accounted for in the newly established total disturbance.

I have also attached a map and a table that identifies the parcels and acreages so you can understand where I got my numbers from. Let me know if this works for you or if we need further edits!

Thanks

Miranda Kawcak, PE

Manager, Environmental

Peabody

Twentymile Coal, LLC | 29515 Routt County Rd #27 | Oak Creek, CO 80467

Office Phone: (970) 870-2718 | Cell: (970) 439-8273

mkawcak@peabodyenergy.com

3 attachments



2021 ARR MAP.pdf
9025K



ARR Form2021 revised 051122.pdf
55K



Acreage Summary 051122.pdf
38K

Colorado Division of Reclamation, Mining and Safety

Annual Reclamation Report for Calendar Year – **Revised**

Mine Name	Permit Number	Permittee
-----------	---------------	-----------

Address

This report, required by Rule 2.04.13, is due by February 15 of each year, or other date, as agreed upon by the Division. It should include text, discussion, and maps, at a minimum, in addition to any other reclamation monitoring data as required by the approved permit. The location of the acreage reported under each land status category and year of seeding (if applicable) should be clearly identified on a map included with the report.

Land Category	Last Year's Cumulative Total (from last year's ARR)	This Calendar Year			Cumulative Total
		Acres Added (+)	Acres Subtracted (-)		
Acreage in Active Mining Areas ¹				=	

Land Category	Last Year's Cumulative Total (from last year's ARR)	This Calendar Year			Cumulative Total
		Acres Added (+)	Acres Subtracted (-)		
Acres Disturbed ²				=	
Acres Backfilled and Graded				=	
Acres Topsoiled				=	

Acreage in Long-term Facilities ³	Last Year's Cumulative Total (from last year's ARR)	This Calendar Year			Cumulative Total
		Acres Added (+)	Acres Subtracted (-)		
Non-Permanent Facilities				=	
Permanent Facilities (permitted)				=	
Totals				=	

Acres Seeded (permanent)	Last Year's Cumulative Total (from last year's ARR)	This Calendar Year			Cumulative Total
		Acres Added (+)	Acres Subtracted (-)		
9 Years and Less				=	
10 Years and Greater				=	
Totals				=	

Bond Release	Last Year's Cumulative Total (from last year's ARR)	This Calendar Year			Cumulative Total
		Acres Added (+)	Acres Subtracted (-)		
Phase I Released				=	
Phase II Released				=	
Phase III Released				=	

¹Includes pits, topsoil stripped areas in advance of pits, and spoil not backfilled and graded

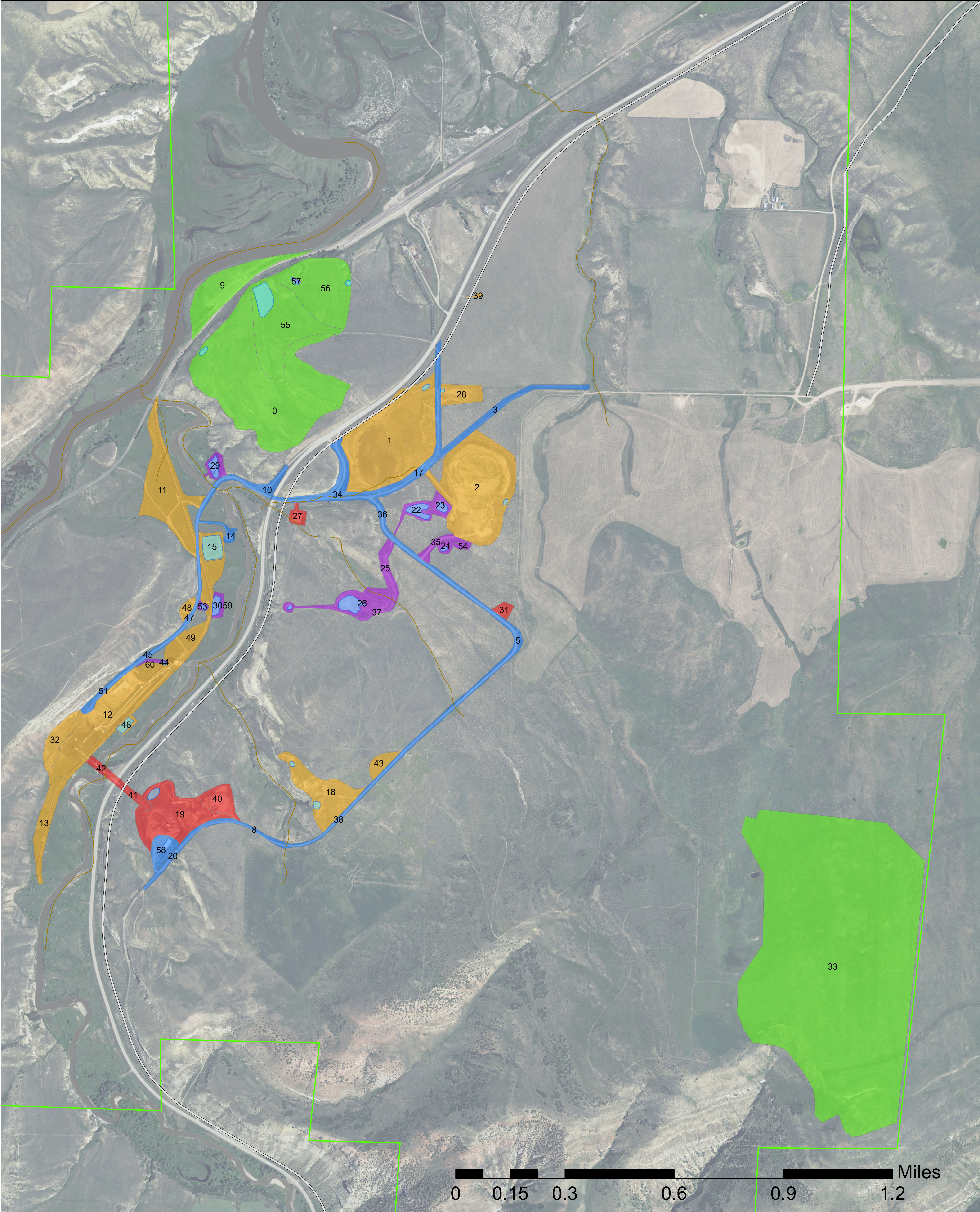
²Surface Mine Acres Disturbed = B&G + Long-Term Facilities + Active Mining Areas; Underground Mine Acres Disturbed = B&G + Long-Term Facilities; Separately-permitted Loadouts = B&G + Long-Term Facilities

³Includes haul, access and light-use roads, temporary dams and impoundments; permanent dams and impoundments; diversion and collector ditches, water and air monitoring sites; topsoil stockpiles; overburden stockpiles; repair, storage and construction areas; office area, repair shops, and parking; coal stockpiles, loading, and processing areas; railroads; coal conveyors; refuse piles and coal mine waste impoundments; head-of-hollow fills; valley fills; ventilation shafts and entryways; and non-coal waste disposal area (garbage dumps and coal combustion by-products disposal areas).

RECLAMATION PARCELS

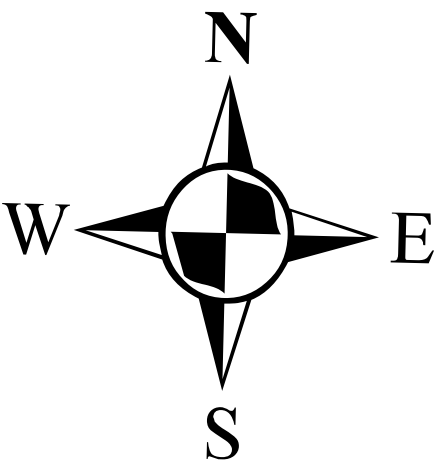
	ID	Acres
ACTIVE		
	19	5A Portal Facilities Area
	27	Main Substation
	31	7N Angle Pump Station
	40	Rock Crusher Site NA
	41	Upper Overland Conveyor
	42	Lower Overland Conveyor
Sum Acres	24.6	
PERMANENT		
	3	Road
	5	Road
	8	Road
	10	Road
	14	Dewatering Station
	17	Road
	20	Road
	34	Road
	36	Road
	38	Road
	45	Road
	47	Permanent Road
	51	Permanent Road and Turnaround
	58	Multi-Purpose Building
Sum Acres	49	
RECLAIMED		
	1	Refuse Pile
	2	#9 Mine/ Refuse Pit
	11	North Railroad Field and Scale
	12	Main Facilities Area South
	13	South Railroad Field
	15	Treatment Ponds
	18	Reclamation Barn/ Old Shop Area
	28	Brazel Simms Building
	32	#5 Portal Area
	39	HWY 13 Rock Dust

	ID	Acres
	Tank Pad	
43	Reclaim	2
46	Wastewater Pond	1.2
48	Powder Mag Area	1
49	Main Facilities Area North	9.3
Sum Acres	148.9	
RELEASED		
0	WF Strip Pit Mine	57
9	WF Strip Pit Pre-Law	12.5
33	Utah Tract	216.1
55	WF Strip Pit Pre-Law	20.5
56	WF Strip Pit Mine	17.6
Sum Acres	323.8	
TEMP		
22	9-P1 Pond	2.6
23	9-P6 Pond	1.7
24	9-P5 Pond	1.1
25	Drainage	2.7
26	9-P2 and 9-P3 Ponds	7.4
29	HR-P1 Pond	2
30	5-P1 Pond	1.5
35	Road	1.6
37	Road	0.8
44	Pond 5-P3	0.1
53	Pond 5-P2	0.4
54	Topsoil pile for 9-P5	0.5
57	Pond 9A-P2 Removed from SL4	0.2
59	5-P1 Pond	1.4
Sum Acres	23.9	
Sum Acres	570.3	



Legend

- Permit_Boundary
- Ponds
- DISTURBANCE**
- Active Disturbance
- Permanent Disturbance
- Active Reclamation
- Release Reclamation
- Long Term /Temp Disturbance



Williams Fork Mine



29515 RCR #27
OAK CREEK, CO 80467

2021 ANNUAL RECLAMATION MAP

DESIGNED BY: MLK
DRAWN BY: MLK

COUNTRY: USA
STATE/PROVINCE: COLORADO
GSC: 5N 91W, 5N 92W, 6N 91W, 5N 92W

DATE: 2020-10-20
SCALE:

DRAWING/SHEET: 1 of 1
C.I.: 0'