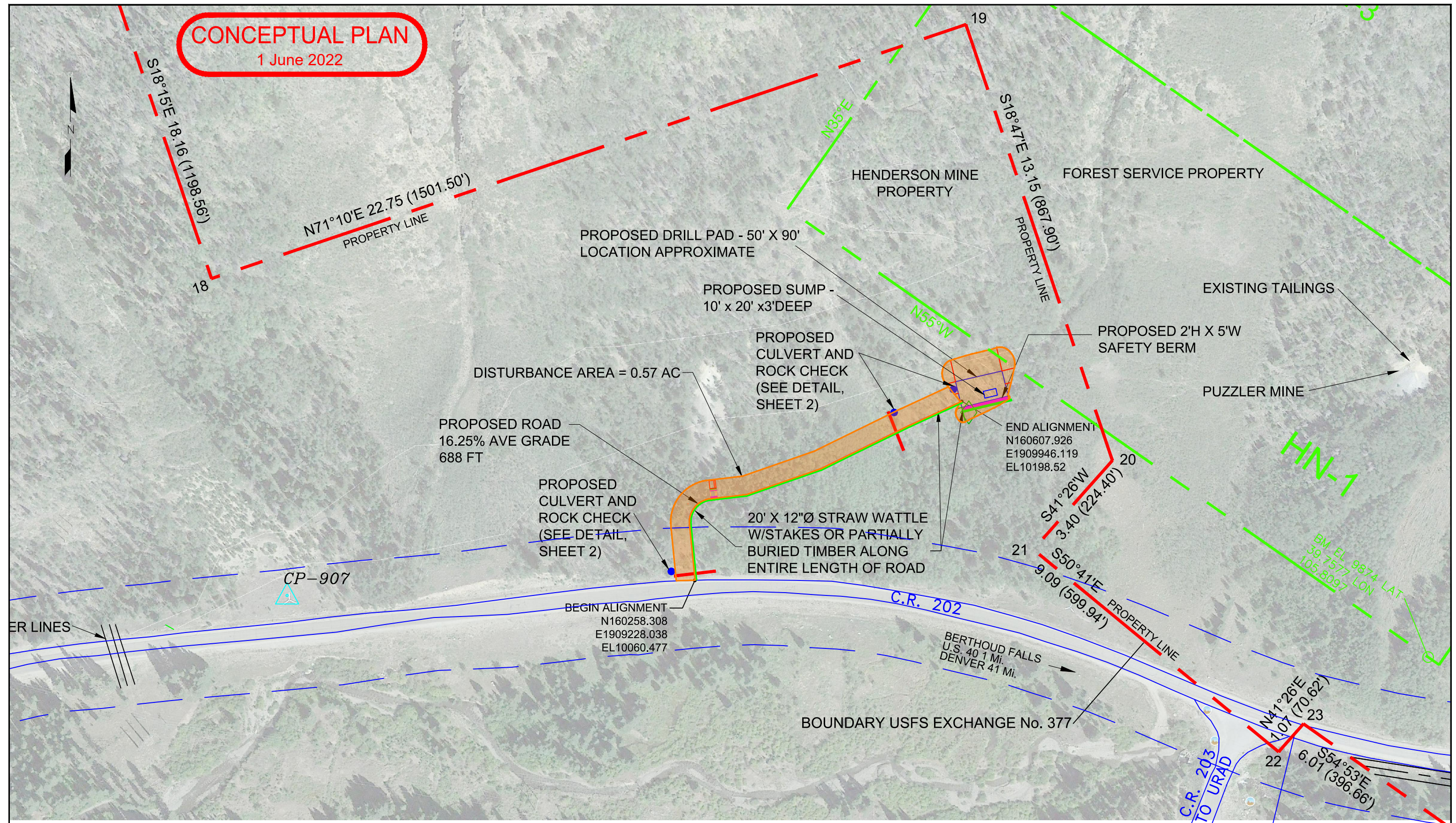



CONCEPTUAL PLAN
1 June 2022



DWG. #	REFERENCE DRAWINGS	DESCRIPTION OF REVISION	DATE	BY	APPR	DEPARTMENT APPROVALS	ENGR:	JLF	1/13/22	<div><div><div>HENDERSON OPERATIONS</div><div><div><div>Climax Molybdenum</div><div>A Freeport-McMoRan Company</div><div>EMPIRE / PARSHALL, COLORADO 303-569-3221</div></div></div></div></div> <th colspan="3">MINE SITE SURFACE</th>	MINE SITE SURFACE		
		<div><div>Δ</div>CONCEPTUAL PLAN APPROVED</div>	5/5/22	JS	JLF		DRAWN BY:	JS	1/13/22		PUZZLER MINE		
		<div><div>Δ</div>REVISE ROAD LOCATION</div>	6/1/22	JS			CHECKED BY:	BDR	5/5/22		PROPOSED DRILL ROAD		
		<div><div>Δ</div></div>					APPROVED BY:	JLF	5/5/22		PLAN VIEW		
		<div><div>Δ</div></div>					APPROVED BY:				2-2-9020		
		<div><div>Δ</div></div>				SCALE: 1' = 170' APPROXIMATE	SAFETY APP BY:			SHT 1 OF 2			
										REV. <div><div>Δ</div></div>			