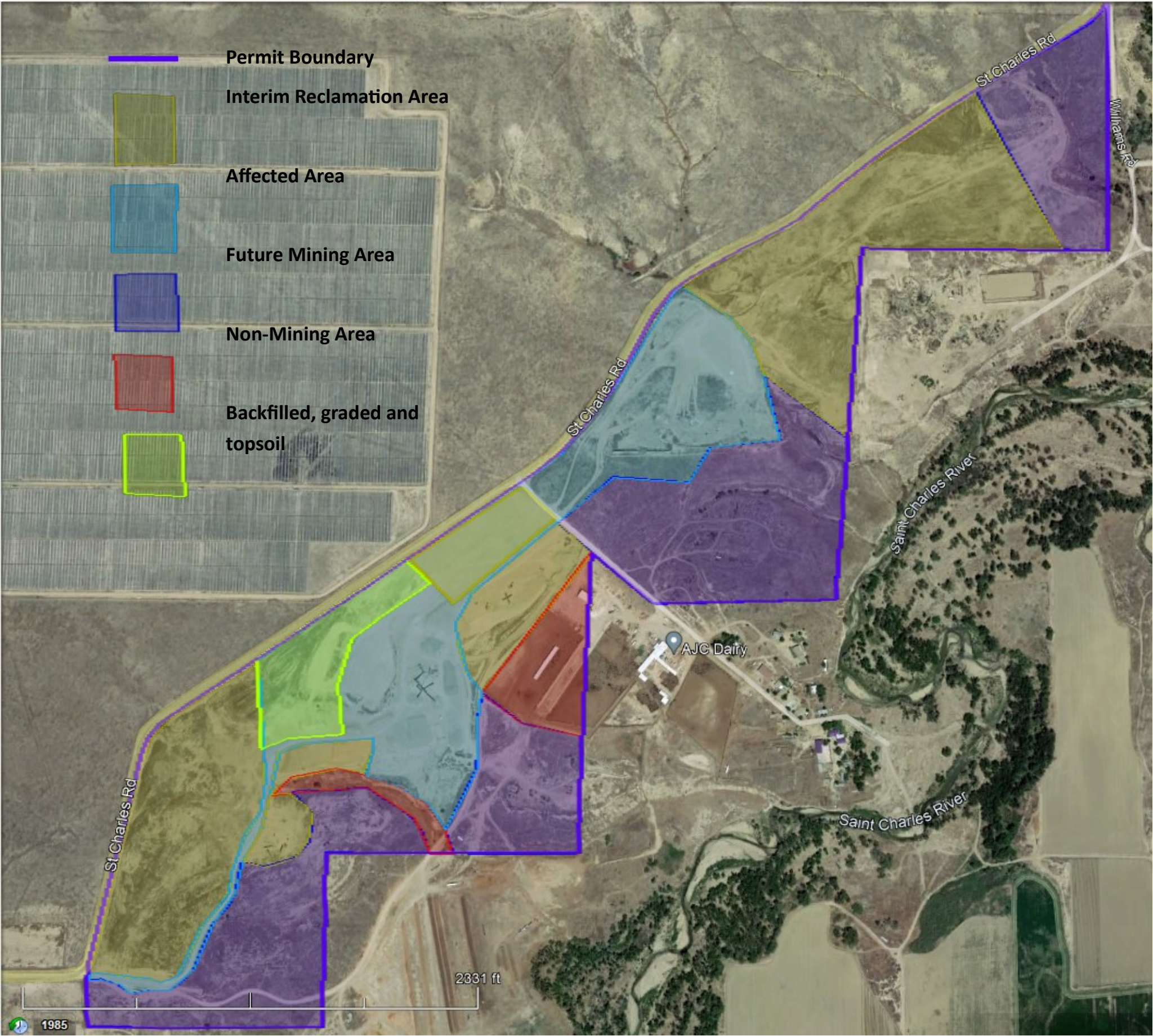


# Annual Mining Plan Map for M-1998-101 Cesar Pit



**Mining Plan Narrative:**

Areas to be mined will have overburden/topsoil stripped by dozer or scraper and stockpiled for use in reclamation. Materials will be extracted by wheel loader or excavator for processing. Highwalls are anticipated along permit boundaries varying in heights up to approximately 20 feet.

Wheeled travel will be restricted in areas of interim reclamation. Physical barriers will delineate areas of travel.

Areas marked affected are in use for mining, materials stockpiling and processing. Approximately 32 acres.

Areas marked for backfill, grading and topsoil are anticipated to be seeded spring 2023. Approximately 7.8 acres.

Areas marked Interim Reclamation have been graded topsoiled and seeded. Approximately 64.58 acres.

Future mining areas to be backfilled, sloped and seeded. Approximately 66 acres.

Non-Mining areas are the southwest drainage area and corrals. Approximately 9 acres.

Tony J Beltramo & Sons, Inc

03/07/2023