

Surface Water Hydrology  
(Surface Water Features and Controls)



New Horizon Mine  
Permit No. C-1981-008  
P.O. Box 628, Nuclea, CO. 81424

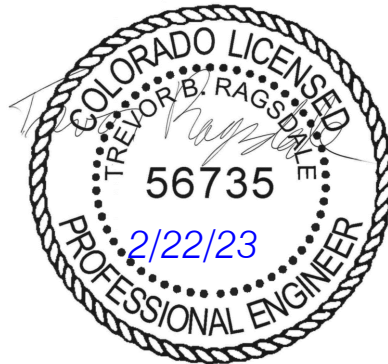
SCALE: 1" = 400'  
ORIGINAL DATE: 5/15/2015  
DWG. BY: ES/TCP  
APPROVED BY: FKF

DWG NO.  
Map 2.05.3(3)-1

NO.	REVISION	DATE	BY	CHK
TR-102	Reduced permit boundary and removed culverts 140 and 141. Removed Pond 009 watershed.	2/22/21	Tony	FF
TR-102	Fixed PMT Topography & Permit Boundary	4/13/21	Tony	FF
TR-105	Revised Permit Boundary	5/19/22	Tony	TR
TR-106	Revised Permit Boundary	2/22/23	Tony	TR

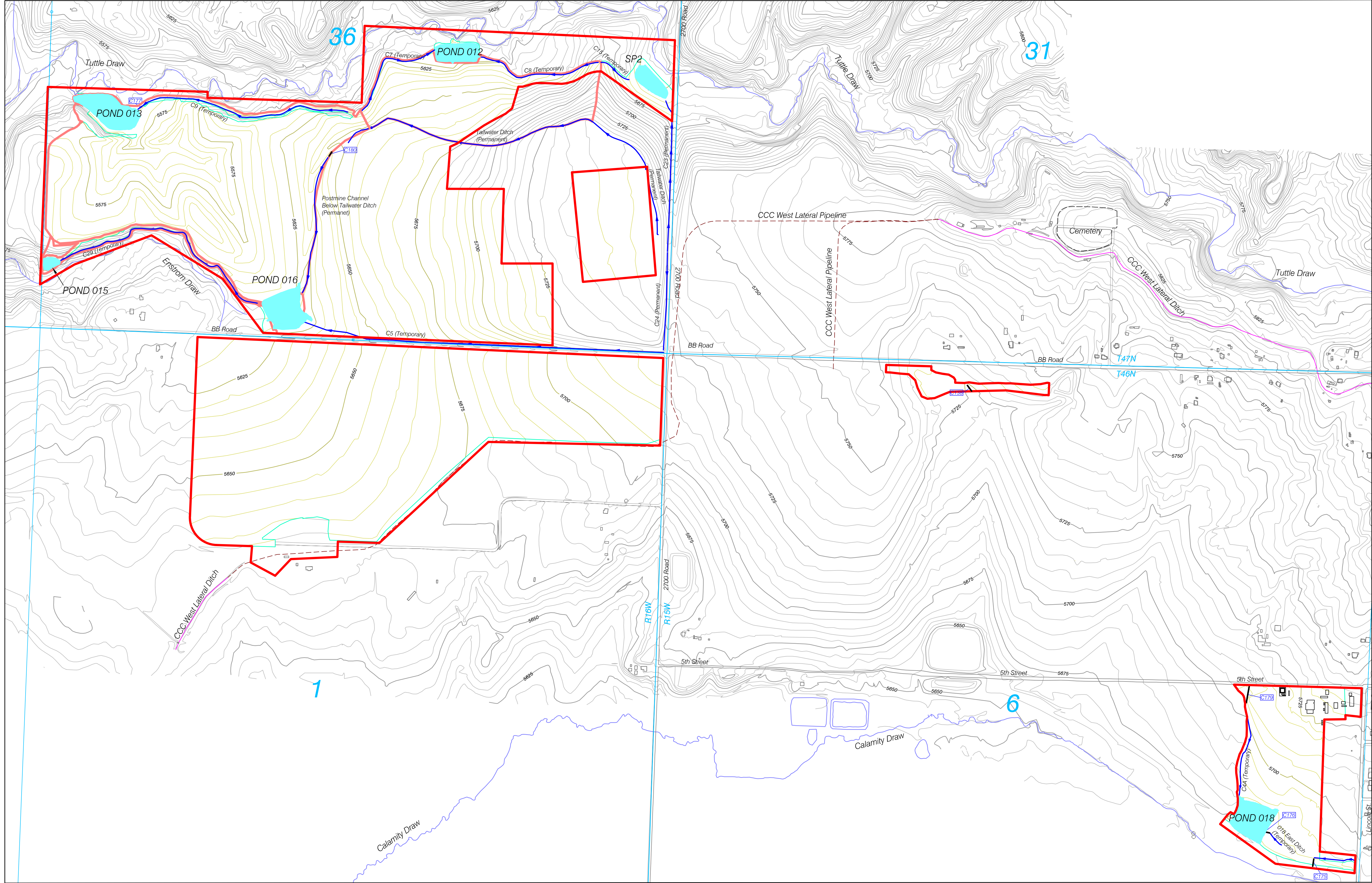
ENGINEERS CERTIFICATION

I, Trevor B. Ragsdale, hereby certify that this map has been reviewed by me and is true and correct to the best of my knowledge and information, relying on information supplied by experts employed by Colowyo Coal Company or qualified consultants working for Colowyo Coal Company, and that I am a Professional Engineer licensed in Colorado as required by the provisions of C.R.S. 12-25-101 through C.R.S. 12-25-119. IN WITNESS WHEREOF, I have hereunder set my hand and affixed my seal.



List Of Culverts

Item	Dia. X Length	Type	Designation
C138	18" X 60'	HDPE	Temporary
C175	24" X 60'	CMP	Temporary
C176	18" X 90'	CMP	Temporary
C177	18" X 20'	HDPE	Temporary
C179	18" X 140'	CMP	Temporary
C180	18" X 40'	CMP	Temporary



Legend

- Permit Boundary
- Streams
- CCC West Lateral Ditch
- CCC West Lateral Pipeline
- Roads
- Disturbance Boundary
- Watershed Boundary
- Township & Range
- Culverts
- Buildings
- Ditches
- Sediment Pond or Stock Pond

