



## Keenesburg Mine Site Inspection Report

4th Quarter

12/2/2022

Inspected By: Matt Clark

### **Boundary, Fence & Facilities**

**Missing Boundary Markers:** No

**Fence Repairs:** No

Sand and weed debris buildup in southeast corner. Fence not fully functional.

**Precipitation Gage Issues:** No

**Other Facilities Issues:** No

### **Weeds & Pests**

**Noxious Weeds:** Yes

Species: Cheatgrass/Downy brome - Bromus tectorum - List C

**Nuisance Weeds (impacting desirable reclamation):** Yes

Species: Salsola (see photo locations for reference points)

**Pests:** No

Species:

### **Vegetation Establishment & Health**

**Low Density Vegetation Areas:** Yes

Continue to monitor throughout 2023 growing season and overseed fall 2023 if necessary.

**Areas of Poor Health:** Yes

Ailment(s): Drought Stress

See photo reference points

### **Erosion**

**Excessive Erosion:** No

Description:

**New BMPs Required:** No

**BMPs Requiring Maintenance:** No

## **Site Management Summary**

Site Management Activities Requiring Follow-up: Yes

Specific Task(s): Nuisance Weed Management, Supplemental Seeding, Mowing

## **Photos**



Area mowed during summer 2022 to control nuisance weeds. Minimal desirable vegetation establishment noted. Possible overseeding required 2023. (Photo 1)



Area not mowed during summer due to nuisance weeds setting seed. Monitor in spring and mow in summer prior to seed set. (Photo 2)



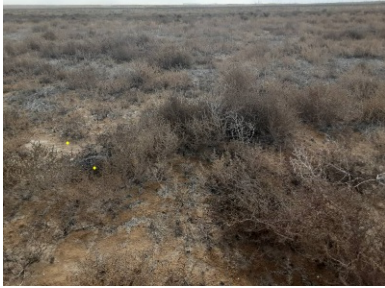
Observed grasses likely germinated following March seeding and now are desiccated. However, select species are showing signs of survival. (Photo 3)



Weather station appears to be operational. (Photo 4)



No sheet flowing or erosion observed following 2022 reseeding. (Photo 5)



Area not mowed in 2022 due to nuisance weeds setting seed. Monitor area and mow in summer 2023 prior to flowering. (Photo 6)



Rows of grass species germinated from March seeding have desiccated and will likely not recover next year. (Photo 7)



Area mowed in summer 2022 to control nuisance weeds. Monitor in 2023 for future mowing and reseeding. (Photo 8)

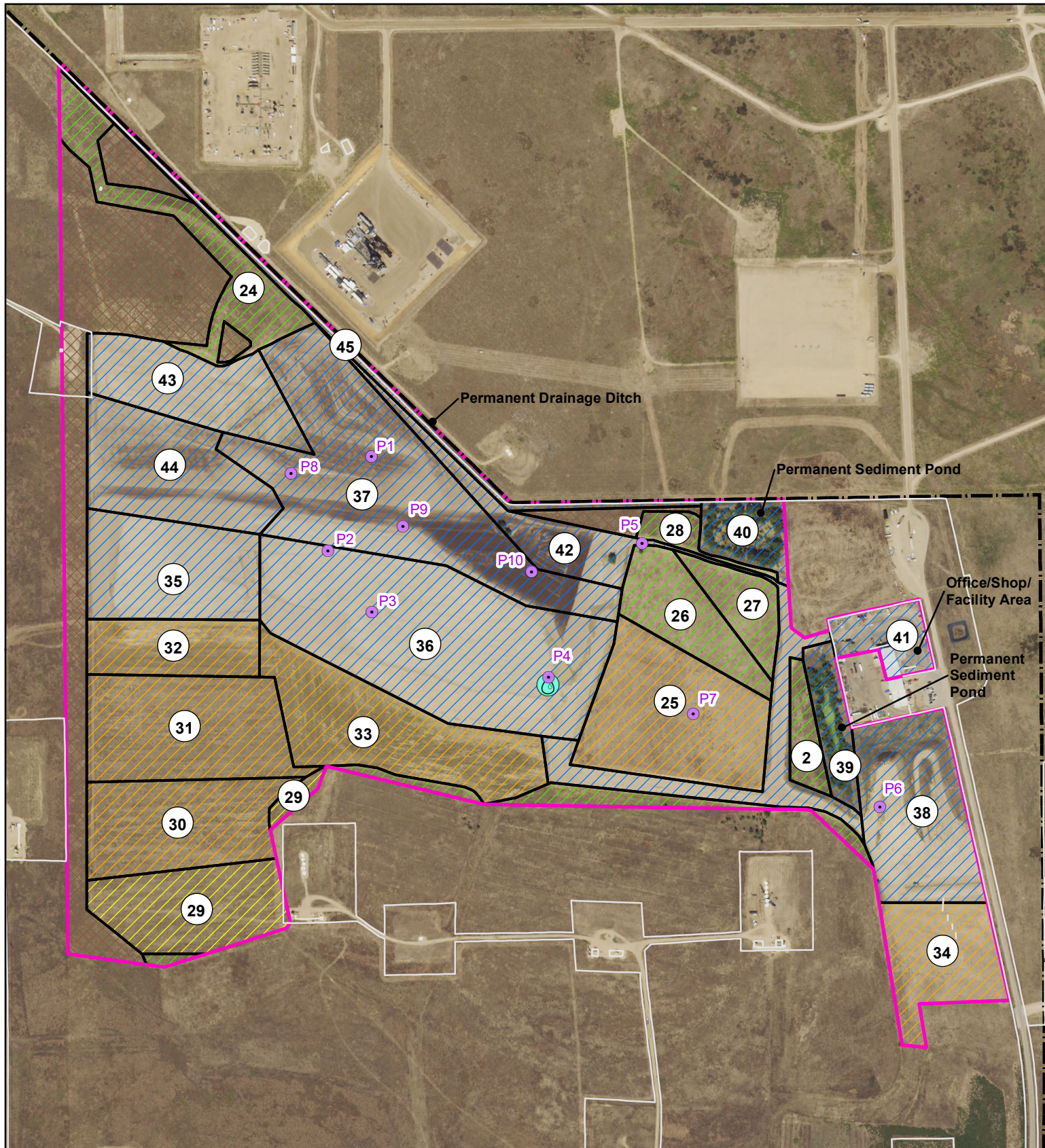


Desirable cool season grasses (Western wheat) are establishing in revegetation areas. Continue to monitor success of establishment in spring 2023. (Photo 9)



Minimal nuisance weeds establishment on northern haul road reclaimed area. Cheatgrass noted in area during previous inspections and prior to reseeding. Currently, minimal cheatgrass observed. Continue to monitor in 2023. (Photo 10)





- Photo Point (see report)
- Phase III Bond Release
- Phase II Bond Release
- Phase I Bond Release
- Pending Phase I
- Undisturbed Area
- Permit Boundary
- Fence
- Precipitation Gage



0 500 1,000 Feet

# COORS ENERGY KEENESBURG MINE

4th Quarter 2022 Site Inspection



Date: 12/2/2022

Drawn by: RB

Checked by: MC