

MINERAL MATERIALS INSPECTION REPORT

Forest Service
United States
Department of
Agriculture

Pike and San Isabel National Forest
Pikes Peak Ranger District Forest
Phone: 719-636-1602



MINERAL MATERIAL OPERATING PLAN					
MINE NAME:		CLAIM NUMBER(S):		INSPECTOR(S):	
Pikeview Quarry		CMC256219		Amy Titterington	
TOWNSHIP:	RANGE:	SECTION(S):	COUNTY:	TYPE OF OPERATION:	
13 S	67 W	9	El Paso	Negotiated Sale Contract	
OPERATOR(S):		OPERATOR(S) PRESENT:		INSP. DATE:	INSP. TIME:
Riverbend Industries		Yes		December 14, 2022	13:00
REASON FOR INSPECTION:		DATE OF LAST INSPECTION:		JOINT INSP. AGENCY:	
New Operation		28-Nov-22		DRMS	
STATUS:	PLAN EXPIRATION DATE:	MINERAL:		BOND AMOUNT:	
Authorized	12/31/2023	Placer		DRMS: \$13,389,784 (2020)	
USFS PLAN NUMBER:		COUNTY SUP (Y/N):		DRMS PERMIT NUMBER:	
2850-021209-RP-2022-001		Yes		M-1977-211	
VOLUME PERMITTED:	VOLUME DISTURBED:	NEPA DATE:		CONTACT:	
197,500 LCY	80046 LCY	CE: 07/28/22		Jerry Schnabel	
FOLLOW UP REQUIRED:	INSPECTOR'S SIGNATURE:			SIGNATURE DATE:	
Yes					

GENERAL INSPECTION FOCUS

The following chart outlines the focus of the inspection and evaluates each area based on their status.

ROADS/ACCESS	Y	BACKFILL & GRADING	Y	FOLLOWING PLAN	Y
SIGNS AND MARKERS	NA	REVEGETATION	NA	ON SITE WASTE	NA
MACHINERY ON SITE	Y	RECLAMATION ADEQUATE	NA	ON SITE FACILITIES	NA
PROCESSING WASTE/TAILING	Y	BOND ADEQUATE	Y	OLD DIG SITES	NA

Y = Inspected and is satisfactory / NA = Not applicable / PC = Problem Cited

BACKGROUND

The Pikeview Quarry is a large pit visible from I-25 and much of the northern Colorado Springs vicinity. Specifically, it is located approximately 5 miles northwest of Colorado Springs at the southern edge of the United States Air Force Academy (see Figure 1.1). The quarry was first mined in the early 1900s for limestone aggregate and mining continued under the current owner, Riverbend Industries Inc. (Castle Concrete Corporation), for limestone aggregate from 1970 until operations ceased in 2008. Riverbend

MINERAL MATERIALS INSPECTION REPORT

Forest Service
United States
Department of
Agriculture

Pike and San Isabel National Forest
Pikes Peak Ranger District Forest
Phone: 719-636-1602



Industries currently has a Construction Material (112) Reclamation Permit with the State of Colorado (DRMS), which covers an area of 240 permitted acres for reclamation purposes, including up to 26 acres on National Forest System (NFS) lands. The quarry produced limestone aggregate until 2008 when a landslide occurred within the quarry on private lands and shut down all mining-related operations. No mining – related operations have occurred since 2008.

In 2001, the Forest Service approved a Special Use Permit for an enhanced reclamation project, which also included a permitted operating plan and a contract for the sale of 200,000 yd³ of material from NFS lands bounding the Pikeview Quarry. The intent of the contract was to allow the proponent to utilize the requested NFS material as part of the larger reclamation of the quarry on the adjacent private lands. The operator has not exploited material from the Pikeview Quarry since 2001 and 197,500 yd³ remain on the original contract for disposal.

PSICC Forest and Grassland Supervisor signed the Supplementary Information Report (SIR) on July 28, 2022, and the contract was re-authorized by the Deputy Regional Forester on November 4, 2022. According to site usage report, the first use of material from NFS lands started on November 28, 2022. To date, 35,190 cubic yards have been removed from the North Borrow Area and 44,856 cubic yards have been removed from the South Borrow Area (cumulative 80,046).

OBSERVATIONS

I visited the site in coordination with DRMS to conduct a monthly compliance inspection of the Pikeview Negotiated Sale contract. To date, Riverbend Industries has removed approximately 80,046 loose cubic yards of NFS fill material for use in the backfill of the main pit area.

Backfill was being actively excavated from the north borrow area (Photo 1) and placed in lifts to build up the 2H:1V outslope portion of the backfill (Photo 2). The east side of the north borrow area (off NFS lands) had been graded, topsoiled, and seeded (Photo 3) and will serve as a test plot for reclamation. Site representatives indicated this area consisted of 4.6 acres. Two acres on the west side had been covered with a coconut fiber mat, and the 2.6 acres on the east side had been hydro mulched.

Material continues to be removed from the south borrow areas (Photos 4 and 5).

USFS silviculture specialists Matt Williams and Christian Larson were present during the inspection to view the site and provide native planting guidance that will be implemented during the reclamation phase of the project.

RECOMMENDATIONS

No problems were cited during this inspection. Continue to monitor.

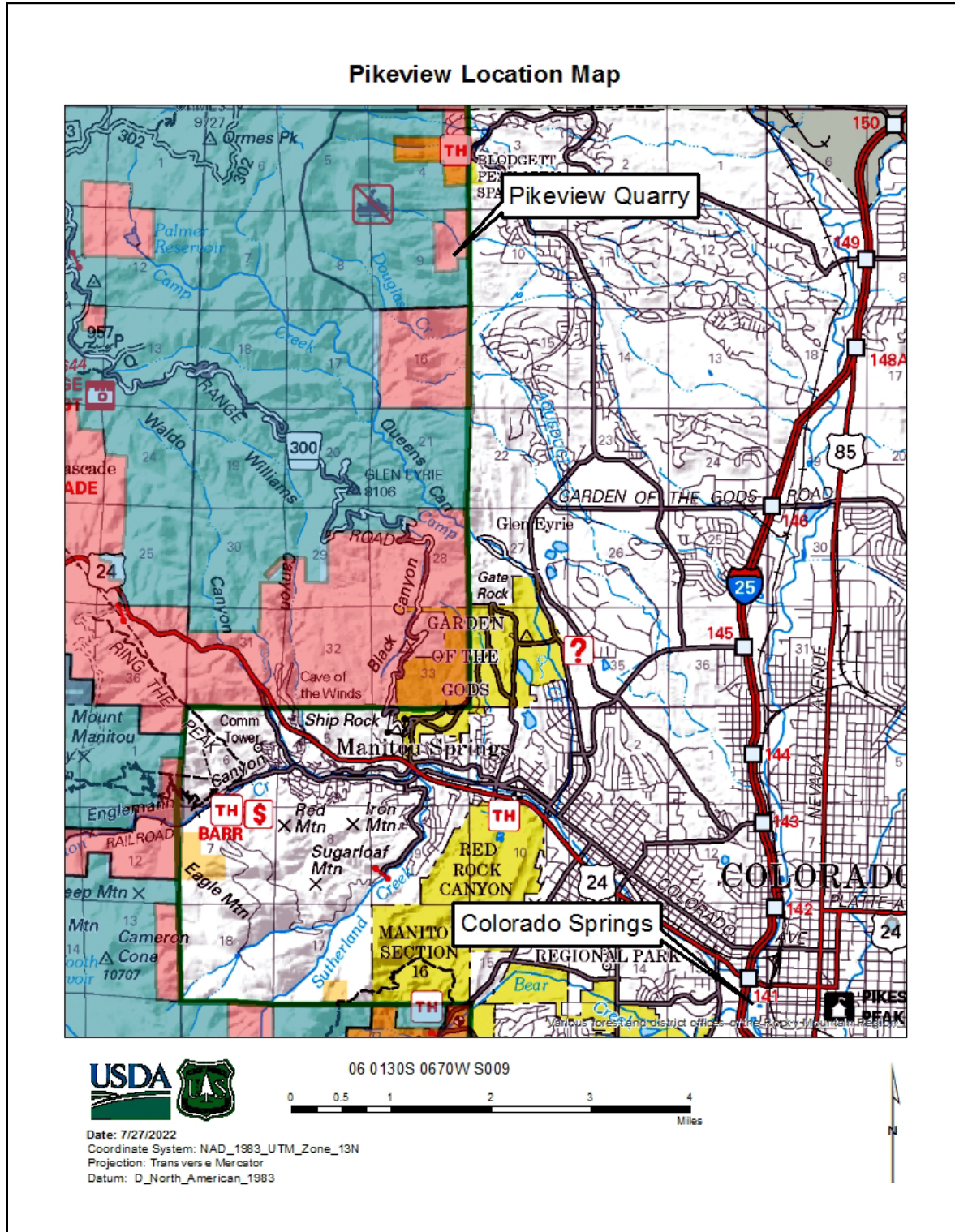
MINERAL MATERIALS INSPECTION REPORT

Forest Service
United States
Department of
Agriculture

Pike and San Isabel National Forest
Pikes Peak Ranger District Forest
Phone: 719-636-1602



Figure 1 – Location Map of the Pikeview Quarry



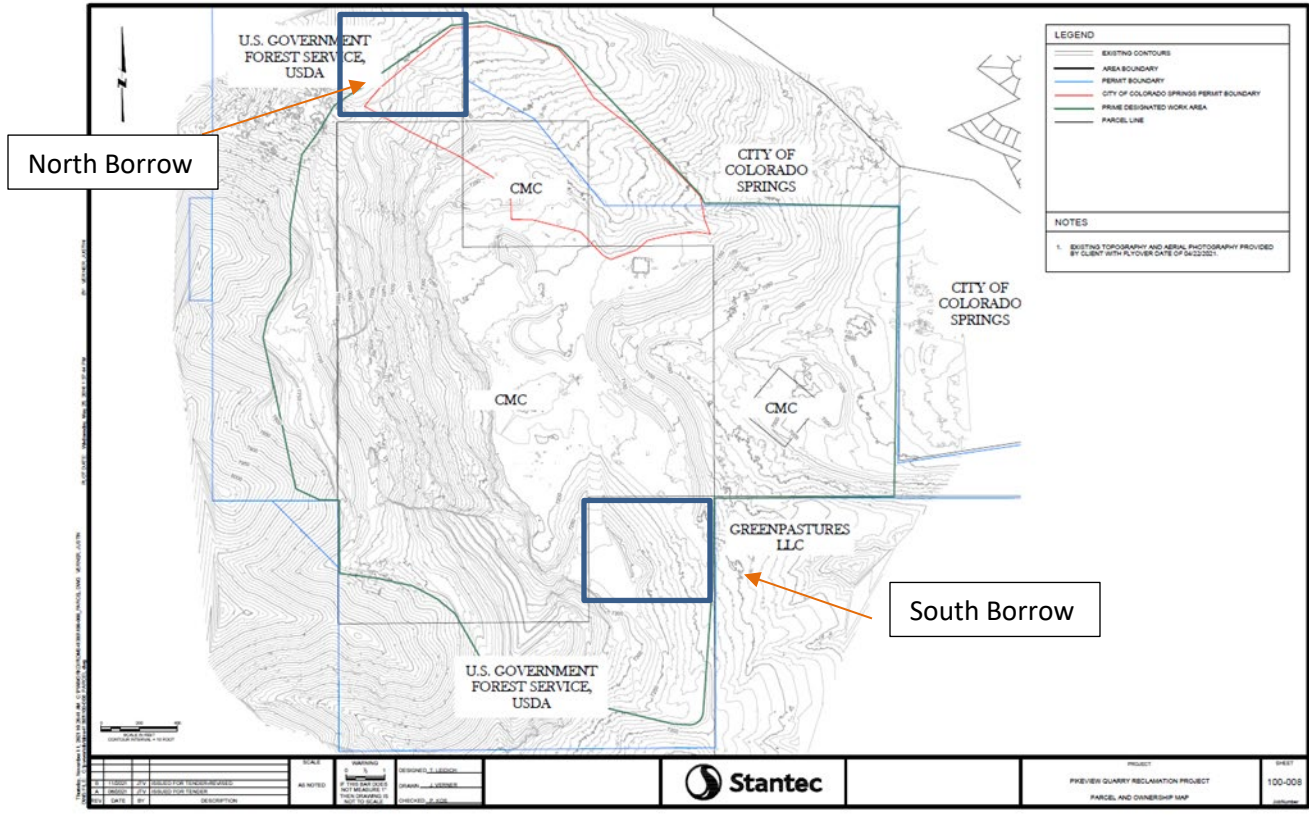
MINERAL MATERIALS INSPECTION REPORT

Forest Service
United States
Department of
Agriculture

Pike and San Isabel National Forest
Pikes Peak Ranger District Forest
Phone: 719-636-1602



Figure 2 – Ownership Map of Pikeview Quarry area



MINERAL MATERIALS INSPECTION REPORT

Forest Service
United States
Department of
Agriculture

Pike and San Isabel National Forest
Pikes Peak Ranger District Forest
Phone: 719-636-1602



PHOTOS



Photo 1 – Material is being actively removed from North Borrow Area.



Photo 2 – Fill material is being actively placed in main backfill area.

MINERAL MATERIALS INSPECTION REPORT

Forest Service
United States
Department of
Agriculture

Pike and San Isabel National Forest
Pikes Peak Ranger District Forest
Phone: 719-636-1602



Photo 3 – Test reclamation plots on City of COS property.



Photo 4 – Fill material being actively removed from USFS South Borrow Area.

MINERAL MATERIALS INSPECTION REPORT

Forest Service
United States
Department of
Agriculture

Pike and San Isabel National Forest
Pikes Peak Ranger District Forest
Phone: 719-636-1602



Photo 5 – Another photo of material being actively removed from USFS South Borrow Area.