

MINERAL MATERIALS INSPECTION REPORT

Forest Service
United States
Department of
Agriculture

Pike and San Isabel National Forest
Pikes Peak Ranger District Forest
Phone: 719-636-1602



MINERAL MATERIAL OPERATING PLAN					
MINE NAME: Pikeview Quarry		CLAIM NUMBER(S): CMC256219		INSPECTOR(S): Amy Titterington	
TOWNSHIP: 13 S	RANGE: 67 W	SECTION(S): 9	COUNTY: El Paso	TYPE OF OPERATION: Negotiated Sale Contract	
OPERATOR(S): Riverbend Industries		OPERATOR(S) PRESENT: Yes		INSP. DATE: November 28, 2022	INSP. TIME: 13:00
REASON FOR INSPECTION: New Operation		DATE OF LAST INSPECTION: 1-Apr-22		JOINT INSP. AGENCY: DRMS	
STATUS: Authorized	PLAN EXPIRATION DATE: 12/31/2023	MINERAL: Placer		BOND AMOUNT: DRMS: \$13,389,784 (2020)	
USFS PLAN NUMBER: 2850-021209-RP-2022-001		COUNTY SUP (Y/N): Yes		DRMS PERMIT NUMBER: M-1977-211	
VOLUME PERMITTED: 197,500 LCY	VOLUME DISTURBED: 0 LCY	NEPA DATE: CE: 07/28/22		CONTACT: Jerry Schnabel	
FOLLOW UP REQUIRED: Yes	INSPECTOR'S SIGNATURE:			SIGNATURE DATE:	

GENERAL INSPECTION FOCUS

The following chart outlines the focus of the inspection and evaluates each area based on their status.

ROADS/ACCESS	Y	BACKFILL & GRADING	Y	FOLLOWING PLAN	Y
SIGNS AND MARKERS	NA	REVEGETATION	NA	ON SITE WASTE	NA
MACHINERY ON SITE	Y	RECLAMATION ADEQUATE	NA	ON SITE FACILITIES	NA
PROCESSING WASTE/TAILING	Y	BOND ADEQUATE	Y	OLD DIG SITES	NA

Y = Inspected and is satisfactory / NA = Not applicable / PC = Problem Cited

BACKGROUND

The Pikeview Quarry is a large pit visible from I-25 and much of the northern Colorado Springs vicinity. Specifically, it is located approximately 5 miles northwest of Colorado Springs at the southern edge of the United States Air Force Academy (see Figure 1.1). The quarry was first mined in the early 1900s for limestone aggregate and mining continued under the current owner, Riverbend Industries Inc. (Castle Concrete Corporation), for limestone aggregate from 1970 until operations ceased in 2008. Riverbend

MINERAL MATERIALS INSPECTION REPORT

Forest Service
United States
Department of
Agriculture

Pike and San Isabel National Forest
Pikes Peak Ranger District Forest
Phone: 719-636-1602



Industries currently has a Construction Material (112) Reclamation Permit with the State of Colorado (DRMS), which covers an area of 240 permitted acres for reclamation purposes, including up to 26 acres on National Forest System (NFS) lands. The quarry produced limestone aggregate until 2008 when a landslide occurred within the quarry on private lands and shut down all mining-related operations. No mining – related operations have occurred since 2008.

In 2001, the Forest Service approved a Special Use Permit for an enhanced reclamation project, which also included a permitted operating plan and a contract for the sale of 200,000 yd³ of material from NFS lands bounding the Pikeview Quarry. The intent of the contract was to allow the proponent to utilize the requested NFS material as part of the larger reclamation of the quarry on the adjacent private lands. The operator has not exploited material from the Pikeview Quarry since 2001 and 197,500 yd³ remain on the original contract for disposal.

Forest and Grassland Supervisor Diana Trujillo signed the Supplementary Information Report (SIR) on July 28, 2022, and the contract was re-authorized by the Deputy Regional Forester on November 4, 2022. According to site usage report, the first use of material from NFS lands started today.

OBSERVATIONS

I visited the site with USFS Minerals Staff (Cullen LaPointe and Kofo Fadeyi-Lawson) to conduct a pre-contract inspection. We visited the main backfill area, and SUP routes that access the upper (western) areas of the quarry. According to Riverbend Industries, today is the first day that they will remove NFS fill material from the South Borrow for use in the backfill of the main pit area. No material has been removed from the North Borrow.

A herd of big horn sheep were spotted in the Western Buttruss area of the site.

RECOMMENDATIONS

No problems were cited during this inspection. Continue to monitor.

MINERAL MATERIALS INSPECTION REPORT

Forest Service
United States
Department of
Agriculture

Pike and San Isabel National Forest
Pikes Peak Ranger District Forest
Phone: 719-636-1602



FIGURES

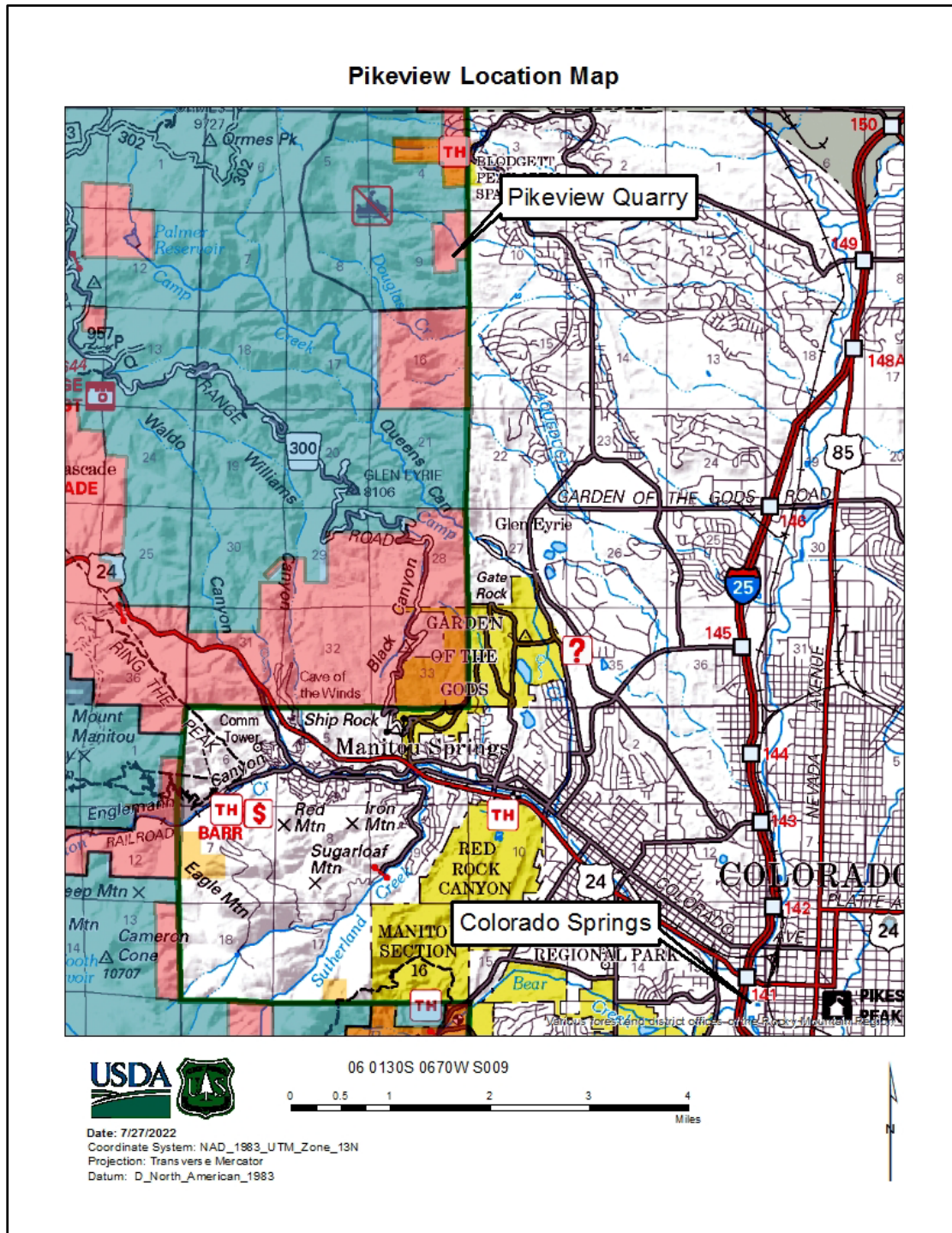


Figure 1 – Location Map of the Pikeview Quarry

MINERAL MATERIALS INSPECTION REPORT

Forest Service
United States
Department of
Agriculture

Pike and San Isabel National Forest
Pikes Peak Ranger District Forest
Phone: 719-636-1602

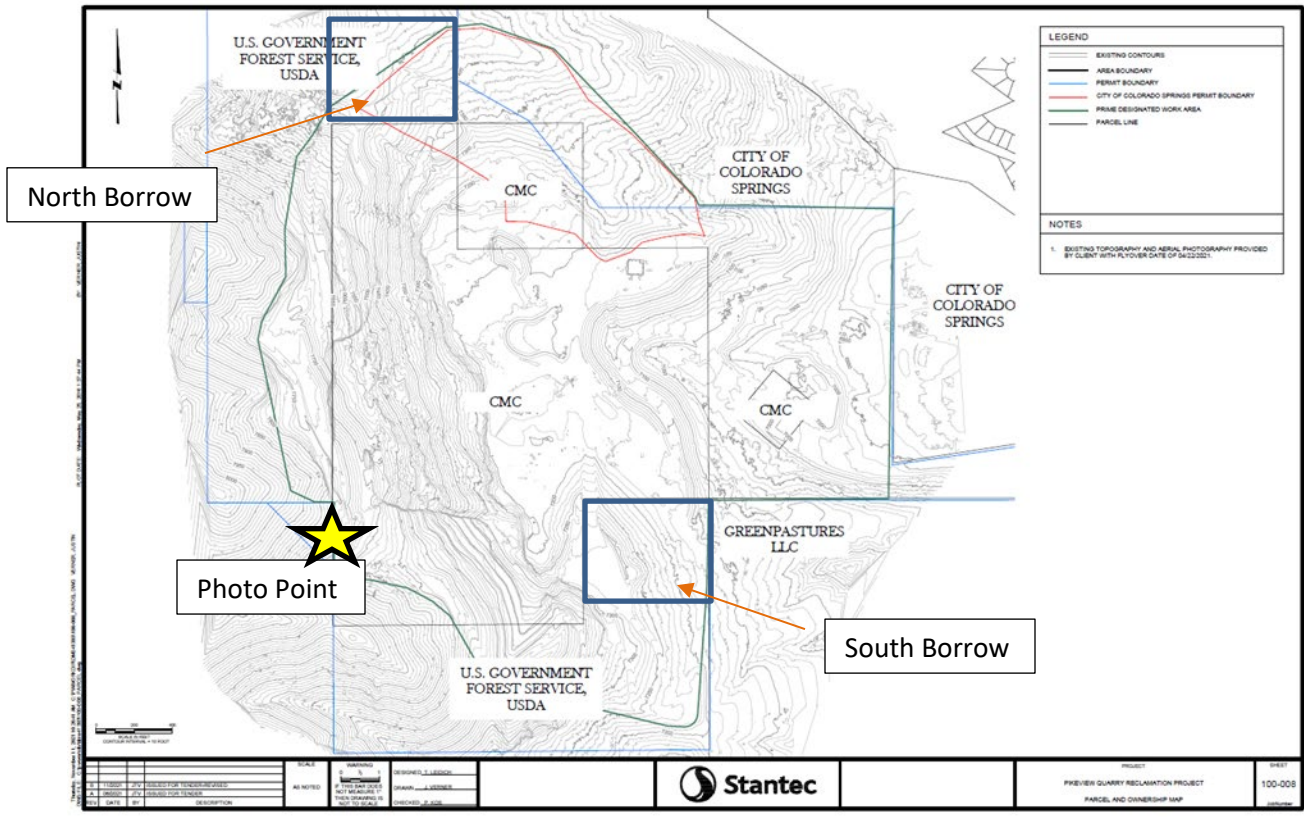


Figure 2 – Ownership Map of Pikeview Quarry showing North and South Borrow areas.

MINERAL MATERIALS INSPECTION REPORT

Forest Service
United States
Department of
Agriculture

Pike and San Isabel National Forest
Pikes Peak Ranger District Forest
Phone: 719-636-1602



PHOTOS



Photo 1 – Overview of the Pikeview Quarry looking north. Revegetation test plots are being installed on the private/ City land at the north end of the project area.

MINERAL MATERIALS INSPECTION REPORT

Forest Service
United States
Department of
Agriculture

Pike and San Isabel National Forest
Pikes Peak Ranger District Forest
Phone: 719-636-1602



Photo 2 – Heavy equipment has been mobilized to the South Borrow area on NFS lands.

MINERAL MATERIALS INSPECTION REPORT

Forest Service
United States
Department of
Agriculture

Pike and San Isabel National Forest
Pikes Peak Ranger District Forest
Phone: 719-636-1602



Photo 3 – Looking northeast. Primary backfilling/ excavation activities have been occurring on the private land in the north and eastern portions of the site.