



Attachment D

2022-01-19

Created	2022-01-19 12:59:23 MST by Environmental Department
Updated	2022-01-19 13:02:15 MST by Environmental Department
Location	37.9740309, -107.7510053

SPCC C-1 Diesel and Gas Storage & Filling Station

Date of Inspection	2022-01-19
Inspection Frequency	Monthly

Gas Tank & Containment (smaller tank)

Do gas tank surfaces show signs of leakage?	No
Is gas tank damaged, rusted or otherwise deteriorating?	No
Are gas tank supports damaged, rusted or otherwise deteriorating?	No
Are gas tank foundations eroded or settled?	No
Gas tank fill level gauge functional?	Yes
Note gas fill level (inches)	5
Are gas vents free of obstruction?	Yes
Is gas secondary containment damaged?	No
Is any maintenance required for gas tank?	No
Note corrective action needed for gas tank	NA

Gas Piping & Transfer Connections

Are gas pipelines or supports damaged, rusted or otherwise deteriorating?	No
Do gas joints, valves, valve seals, gaskets or other appurtenances show signs of leakage?	No
Loading/unloading gas connections are capped or blank flanged?	Yes
Is any maintenance required on gas connections?	No
Note corrective action needed for gas transfer and connections	NA

Diesel Tank & Containment (larger tank)

Do diesel tank surfaces show signs of leakage?	No
Is diesel tank damaged, rusted or otherwise deteriorating?	No
Are diesel tank supports damaged, rusted or otherwise deteriorating?	No
Are diesel tank foundations eroded or settled?	No
Diesel fill level gauge functional?	Yes
Note diesel fill level (inches)	37
Are diesel tank vents free of obstruction?	Yes
Is diesel secondary containment damaged?	No
Is any maintenance required for diesel tank?	No
Note corrective action needed for diesel tank	NA

Diesel Piping & Transfer Connections

Are diesel pipelines or supports damaged, rusted or otherwise deteriorating?	No
Do diesel joints, valves, valve seals, gaskets or other appurtenances show signs of leakage?	No
Loading/unloading deisel connections are capped or blank flanged?	Yes
Is any maintenance required on diesel connections?	No
Note corrective action needed for diesel transfer and connections	NA

Security

Are fencing, gates or lighting functional?	Yes
Are pumps & valves locked when not in use?	Yes
Is any maintenance required for security?	No
Note corrective action needed for security	NA

Response Equipment

Is a spill kit present?	Yes
Is equipment inventory complete?	Yes
Is any maintenance required for response equipment?	No
Note corrective action needed for response equipment	NA

Tank photos (both tanks)



Inspector's name Todd Jesse

Signature

A handwritten signature in black ink, appearing to be 'T. Adh' or similar, written in a cursive style.

Signed 2022-01-19 13:02:12 MST

2022-02-15

Created	2022-02-15 09:57:03 MST by Environmental Department
Updated	2022-02-15 10:01:31 MST by Environmental Department
Location	37.9741697, -107.750947

SPCC C-1 Diesel and Gas Storage & Filling Station

Date of Inspection	2022-02-15
Inspection Frequency	Monthly

Gas Tank & Containment (smaller tank)

Do gas tank surfaces show signs of leakage?	No
Is gas tank damaged, rusted or otherwise deteriorating?	No
Are gas tank supports damaged, rusted or otherwise deteriorating?	No
Are gas tank foundations eroded or settled?	No
Gas tank fill level gauge functional?	Yes
Note gas fill level (inches)	10
Are gas vents free of obstruction?	Yes
Is gas secondary containment damaged?	No
Is any maintenance required for gas tank?	No
Note corrective action needed for gas tank	NA

Gas Piping & Transfer Connections

Are gas pipelines or supports damaged, rusted or otherwise deteriorating?	No
Do gas joints, valves, valve seals, gaskets or other appurtenances show signs of leakage?	No
Loading/unloading gas connections are capped or blank flanged?	Yes
Is any maintenance required on gas connections?	No
Note corrective action needed for gas transfer and connections	NA

Diesel Tank & Containment (larger tank)

Do diesel tank surfaces show signs of leakage?	No
Is diesel tank damaged, rusted or otherwise deteriorating?	No
Are diesel tank supports damaged, rusted or otherwise deteriorating?	No
Are diesel tank foundations eroded or settled?	No
Diesel fill level gauge functional?	Yes
Note diesel fill level (inches)	24
Are diesel tank vents free of obstruction?	Yes
Is diesel secondary containment damaged?	No
Is any maintenance required for diesel tank?	No
Note corrective action needed for diesel tank	NA

Diesel Piping & Transfer Connections

Are diesel pipelines or supports damaged, rusted or otherwise deteriorating?	No
Do diesel joints, valves, valve seals, gaskets or other appurtenances show signs of leakage?	No
Loading/unloading deisel connections are capped or blank flanged?	Yes
Is any maintenance required on diesel connections?	No
Note corrective action needed for diesel transfer and connections	NA

Security

Are fencing, gates or lighting functional?	Yes
Are pumps & valves locked when not in use?	Yes
Is any maintenance required for security?	No
Note corrective action needed for security	NA

Response Equipment

Is a spill kit present?	Yes
Is equipment inventory complete?	Yes
Is any maintenance required for response equipment?	No
Note corrective action needed for response equipment	NA

Tank photos (both tanks)



Inspector's name Todd Jesse

Signature

Signed 2022-02-15 10:01:22 MST

2022-03-29

Created	2022-03-29 08:46:31 MDT by Environmental Department
Updated	2022-03-29 08:51:20 MDT by Environmental Department
Location	37.9742114, -107.7507934

SPCC C-1 Diesel and Gas Storage & Filling Station

Date of Inspection	2022-03-29
Inspection Frequency	Monthly

Gas Tank & Containment (smaller tank)

Do gas tank surfaces show signs of leakage?	No
Is gas tank damaged, rusted or otherwise deteriorating?	No
Are gas tank supports damaged, rusted or otherwise deteriorating?	No
Are gas tank foundations eroded or settled?	No
Gas tank fill level gauge functional?	Yes
Note gas fill level (inches)	15
Are gas vents free of obstruction?	No
Is gas secondary containment damaged?	No
Is any maintenance required for gas tank?	No
Note corrective action needed for gas tank	Tank buried in snow. Vents need to be cleared

Gas Piping & Transfer Connections

Are gas pipelines or supports damaged, rusted or otherwise deteriorating?	No
Do gas joints, valves, valve seals, gaskets or other appurtenances show signs of leakage?	No
Loading/unloading gas connections are capped or blank flanged?	Yes
Is any maintenance required on gas connections?	No
Note corrective action needed for gas transfer and connections	NA

Diesel Tank & Containment (larger tank)

Do diesel tank surfaces show signs of leakage?	No
Is diesel tank damaged, rusted or otherwise deteriorating?	No
Are diesel tank supports damaged, rusted or otherwise deteriorating?	No
Are diesel tank foundations eroded or settled?	No
Diesel fill level gauge functional?	Yes
Note diesel fill level (inches)	35
Are diesel tank vents free of obstruction?	Yes
Is diesel secondary containment damaged?	No
Is any maintenance required for diesel tank?	No
Note corrective action needed for diesel tank	NA

Diesel Piping & Transfer Connections

Are diesel pipelines or supports damaged, rusted or otherwise deteriorating?	No
Do diesel joints, valves, valve seals, gaskets or other appurtenances show signs of leakage?	No
Loading/unloading deisel connections are capped or blank flanged?	Yes
Is any maintenance required on diesel connections?	No
Note corrective action needed for diesel transfer and connections	NA

Security

Are fencing, gates or lighting functional?	NA
Are pumps & valves locked when not in use?	Yes
Is any maintenance required for security?	No
Note corrective action needed for security	NA

Response Equipment

Is a spill kit present?	Yes
Is equipment inventory complete?	Yes
Is any maintenance required for response equipment?	No
Note corrective action needed for response equipment	NA

Tank photos (both tanks)



Inspector's name Todd Jesse

Signature



Signed 2022-03-29 08:50:51 MDT

2022-04-28

Created	2022-04-28 09:40:47 MDT by Environmental Department
Updated	2022-04-28 09:45:48 MDT by Environmental Department
Location	37.9741435, -107.7509806

SPCC C-1 Diesel and Gas Storage & Filling Station

Date of Inspection	2022-04-28
Inspection Frequency	Monthly

Gas Tank & Containment (smaller tank)

Do gas tank surfaces show signs of leakage?	No
Is gas tank damaged, rusted or otherwise deteriorating?	No
Are gas tank supports damaged, rusted or otherwise deteriorating?	No
Are gas tank foundations eroded or settled?	No
Gas tank fill level gauge functional?	No
Note gas fill level (inches)	8
Are gas vents free of obstruction?	Yes
Is gas secondary containment damaged?	No
Is any maintenance required for gas tank?	No
Note corrective action needed for gas tank	Gauge was broken during snow removal. Needs to be replaced. Level of fuel in tank estimated.

Gas Piping & Transfer Connections

Are gas pipelines or supports damaged, rusted or otherwise deteriorating?	No
Do gas joints, valves, valve seals, gaskets or other appurtenances show signs of leakage?	No
Loading/unloading gas connections are capped or blank flanged?	Yes
Is any maintenance required on gas connections?	No
Note corrective action needed for gas transfer and connections	None

Diesel Tank & Containment (larger tank)

Do diesel tank surfaces show signs of leakage?	No
Is diesel tank damaged, rusted or otherwise deteriorating?	No
Are diesel tank supports damaged, rusted or otherwise deteriorating?	No
Are diesel tank foundations eroded or settled?	No
Diesel fill level gauge functional?	Yes
Note diesel fill level (inches)	21
Are diesel tank vents free of obstruction?	Yes
Is diesel secondary containment damaged?	No
Is any maintenance required for diesel tank?	No
Note corrective action needed for diesel tank	None

Diesel Piping & Transfer Connections

Are diesel pipelines or supports damaged, rusted or otherwise deteriorating?	No
Do diesel joints, valves, valve seals, gaskets or other appurtenances show signs of leakage?	No
Loading/unloading deisel connections are capped or blank flanged?	Yes
Is any maintenance required on diesel connections?	No
Note corrective action needed for diesel transfer and connections	NA

Security

Are fencing, gates or lighting functional?	NA
Are pumps & valves locked when not in use?	Yes
Is any maintenance required for security?	No
Note corrective action needed for security	NA

Response Equipment

Is a spill kit present?	Yes
Is equipment inventory complete?	Yes
Is any maintenance required for response equipment?	Yes
Note corrective action needed for response equipment	Snowmelt entered container. Inventory was complete but items were replaced due to water damage

Tank photos (both tanks)



Inspector's name

Todd Jesse

Signature

A handwritten signature in black ink, consisting of stylized, overlapping loops and lines.

Signed 2022-04-28 09:45:44 MDT

2022-05-30

Created	2023-02-03 11:19:06 MST by Environmental Department
Updated	2023-02-03 11:21:10 MST by Environmental Department
Location	38.0382063, -107.6792305

SPCC C-1 Diesel and Gas Storage & Filling Station

Date of Inspection	2022-05-30
Inspection Frequency	Monthly

Gas Tank & Containment (smaller tank)

Do gas tank surfaces show signs of leakage?	No
Is gas tank damaged, rusted or otherwise deteriorating?	No
Are gas tank supports damaged, rusted or otherwise deteriorating?	No
Are gas tank foundations eroded or settled?	No
Gas tank fill level gauge functional?	No
Note gas fill level (inches)	-99
Are gas vents free of obstruction?	Yes
Is gas secondary containment damaged?	No
Is any maintenance required for gas tank?	Yes
Note corrective action needed for gas tank	Gauge needs to be fixed. Kelly says there is 2 feet of gas there

Gas Piping & Transfer Connections

Are gas pipelines or supports damaged, rusted or otherwise deteriorating?	No
Do gas joints, valves, valve seals, gaskets or other appurtenances show signs of leakage?	No
Loading/unloading gas connections are capped or blank flanged?	Yes
Is any maintenance required on gas connections?	No
Note corrective action needed for gas transfer and connections	NA

Diesel Tank & Containment (larger tank)

Do diesel tank surfaces show signs of leakage?	No
Is diesel tank damaged, rusted or otherwise deteriorating?	No
Are diesel tank supports damaged, rusted or otherwise deteriorating?	No
Are diesel tank foundations eroded or settled?	No
Diesel fill level gauge functional?	Yes
Note diesel fill level (inches)	15
Are diesel tank vents free of obstruction?	Yes
Is diesel secondary containment damaged?	No
Is any maintenance required for diesel tank?	No
Note corrective action needed for diesel tank	NA

Diesel Piping & Transfer Connections

Are diesel pipelines or supports damaged, rusted or otherwise deteriorating?	No
Do diesel joints, valves, valve seals, gaskets or other appurtenances show signs of leakage?	No
Loading/unloading deisel connections are capped or blank flanged?	No
Is any maintenance required on diesel connections?	No
Note corrective action needed for diesel transfer and connections	NA

Security

Are fencing, gates or lighting functional?	Yes
Are pumps & valves locked when not in use?	Yes
Is any maintenance required for security?	No
Note corrective action needed for security	NA

Response Equipment

Is a spill kit present?	Yes
Is equipment inventory complete?	Yes
Is any maintenance required for response equipment?	No
Note corrective action needed for response equipment	NA

Tank photos (both tanks)



Inspector's name

Todd Jesse

Signature

A handwritten signature in black ink, appearing to be 'TJesse', written over a white background.

Signed 2023-02-03 11:21:07 MST

2022-06-28

Created	2022-06-28 13:35:17 MDT by Environmental Department
Updated	2022-06-28 13:39:11 MDT by Environmental Department
Location	37.9738897, -107.7506884

SPCC C-1 Diesel and Gas Storage & Filling Station

Date of Inspection	2022-06-28
Inspection Frequency	Monthly

Gas Tank & Containment (smaller tank)

Do gas tank surfaces show signs of leakage?	No
Is gas tank damaged, rusted or otherwise deteriorating?	No
Are gas tank supports damaged, rusted or otherwise deteriorating?	No
Are gas tank foundations eroded or settled?	No
Gas tank fill level gauge functional?	No
Note gas fill level (inches)	24
Are gas vents free of obstruction?	Yes
Is gas secondary containment damaged?	No
Is any maintenance required for gas tank?	Yes
Note corrective action needed for gas tank	Level of tank is approximate. Gauge/bis broken.

Gas Piping & Transfer Connections

Are gas pipelines or supports damaged, rusted or otherwise deteriorating?	No
Do gas joints, valves, valve seals, gaskets or other appurtenances show signs of leakage?	No
Loading/unloading gas connections are capped or blank flanged?	Yes
Is any maintenance required on gas connections?	No
Note corrective action needed for gas transfer and connections	NA

Diesel Tank & Containment (larger tank)

Do diesel tank surfaces show signs of leakage?	No
Is diesel tank damaged, rusted or otherwise deteriorating?	No
Are diesel tank supports damaged, rusted or otherwise deteriorating?	No
Are diesel tank foundations eroded or settled?	No
Diesel fill level gauge functional?	Yes
Note diesel fill level (inches)	12
Are diesel tank vents free of obstruction?	Yes
Is diesel secondary containment damaged?	No
Is any maintenance required for diesel tank?	No
Note corrective action needed for diesel tank	NA

Diesel Piping & Transfer Connections

Are diesel pipelines or supports damaged, rusted or otherwise deteriorating?	No
Do diesel joints, valves, valve seals, gaskets or other appurtenances show signs of leakage?	No
Loading/unloading deisel connections are capped or blank flanged?	Yes
Is any maintenance required on diesel connections?	No
Note corrective action needed for diesel transfer and connections	NA

Security

Are fencing, gates or lighting functional?	Yes
Are pumps & valves locked when not in use?	Yes
Is any maintenance required for security?	No
Note corrective action needed for security	NA

Response Equipment

Is a spill kit present?	Yes
Is equipment inventory complete?	Yes
Is any maintenance required for response equipment?	No
Note corrective action needed for response equipment	NA

Tank photos (both tanks)



Inspector's name

Todd Jesse

Signature

A handwritten signature in black ink, appearing to read 'TJesse', is written over a white background.

Signed 2022-06-28 13:39:08 MDT

2022-07-25

Created	2022-07-25 12:35:40 MDT by Environmental Department
Updated	2022-07-25 12:49:22 MDT by Environmental Department
Location	37.9744954, -107.7508739

SPCC C-1 Diesel and Gas Storage & Filling Station

Date of Inspection	2022-07-25
Inspection Frequency	Monthly

Gas Tank & Containment (smaller tank)

Do gas tank surfaces show signs of leakage?	No
Is gas tank damaged, rusted or otherwise deteriorating?	No
Are gas tank supports damaged, rusted or otherwise deteriorating?	No
Are gas tank foundations eroded or settled?	No
Gas tank fill level gauge functional?	No
Note gas fill level (inches)	3
Are gas vents free of obstruction?	Yes
Is gas secondary containment damaged?	No
Is any maintenance required for gas tank?	No
Note corrective action needed for gas tank	Gauge needs to be fixed

Gas Piping & Transfer Connections

Are gas pipelines or supports damaged, rusted or otherwise deteriorating?	Yes
Do gas joints, valves, valve seals, gaskets or other appurtenances show signs of leakage?	No
Loading/unloading gas connections are capped or blank flanged?	Yes
Is any maintenance required on gas connections?	No
Note corrective action needed for gas transfer and connections	NA

Diesel Tank & Containment (larger tank)

Do diesel tank surfaces show signs of leakage?	No
Is diesel tank damaged, rusted or otherwise deteriorating?	No
Are diesel tank supports damaged, rusted or otherwise deteriorating?	No
Are diesel tank foundations eroded or settled?	No
Diesel fill level gauge functional?	Yes
Note diesel fill level (inches)	11
Are diesel tank vents free of obstruction?	Yes
Is diesel secondary containment damaged?	No
Is any maintenance required for diesel tank?	No
Note corrective action needed for diesel tank	NA

Diesel Piping & Transfer Connections

Are diesel pipelines or supports damaged, rusted or otherwise deteriorating?	No
Do diesel joints, valves, valve seals, gaskets or other appurtenances show signs of leakage?	No
Loading/unloading deisel connections are capped or blank flanged?	Yes
Is any maintenance required on diesel connections?	No
Note corrective action needed for diesel transfer and connections	NA

Security

Are fencing, gates or lighting functional?	Yes
Are pumps & valves locked when not in use?	Yes
Is any maintenance required for security?	No
Note corrective action needed for security	NA

Response Equipment

Is a spill kit present?	Yes
Is equipment inventory complete?	Yes
Is any maintenance required for response equipment?	No
Note corrective action needed for response equipment	NA

Tank photos (both tanks)



Inspector's name

Todd Jesse

Signature

A handwritten signature in black ink, appearing to read "TJ", is written over a white background.

Signed 2022-07-25 12:49:20 MDT

2022-08-24

Created	2022-08-24 12:08:44 MDT by Environmental Department
Updated	2022-08-24 12:13:08 MDT by Environmental Department
Location	37.9742631, -107.7508303

SPCC C-1 Diesel and Gas Storage & Filling Station

Date of Inspection	2022-08-24
Inspection Frequency	Monthly

Gas Tank & Containment (smaller tank)

Do gas tank surfaces show signs of leakage?	No
Is gas tank damaged, rusted or otherwise deteriorating?	No
Are gas tank supports damaged, rusted or otherwise deteriorating?	No
Are gas tank foundations eroded or settled?	No
Gas tank fill level gauge functional?	Yes
Note gas fill level (inches)	24
Are gas vents free of obstruction?	Yes
Is gas secondary containment damaged?	No
Is any maintenance required for gas tank?	No
Note corrective action needed for gas tank	NA

Gas Piping & Transfer Connections

Are gas pipelines or supports damaged, rusted or otherwise deteriorating?	No
Do gas joints, valves, valve seals, gaskets or other appurtenances show signs of leakage?	No
Loading/unloading gas connections are capped or blank flanged?	Yes
Is any maintenance required on gas connections?	No
Note corrective action needed for gas transfer and connections	NA

Diesel Tank & Containment (larger tank)

Do diesel tank surfaces show signs of leakage?	No
Is diesel tank damaged, rusted or otherwise deteriorating?	No
Are diesel tank supports damaged, rusted or otherwise deteriorating?	No
Are diesel tank foundations eroded or settled?	No
Diesel fill level gauge functional?	Yes
Note diesel fill level (inches)	20
Are diesel tank vents free of obstruction?	Yes
Is diesel secondary containment damaged?	No
Is any maintenance required for diesel tank?	No
Note corrective action needed for diesel tank	NA

Diesel Piping & Transfer Connections

Are diesel pipelines or supports damaged, rusted or otherwise deteriorating?	No
Do diesel joints, valves, valve seals, gaskets or other appurtenances show signs of leakage?	No
Loading/unloading deisel connections are capped or blank flanged?	Yes
Is any maintenance required on diesel connections?	No
Note corrective action needed for diesel transfer and connections	NA

Security

Are fencing, gates or lighting functional?	Yes
Are pumps & valves locked when not in use?	Yes
Is any maintenance required for security?	No
Note corrective action needed for security	NA

Response Equipment

Is a spill kit present?	Yes
Is equipment inventory complete?	Yes
Is any maintenance required for response equipment?	No
Note corrective action needed for response equipment	NA

Tank photos (both tanks)



Inspector's name

Todd Jesse

Signature

A handwritten signature in black ink, appearing to read 'Todd Jesse', is written over a white background.

Signed 2022-08-24 12:12:27 MDT

2022-09-27

Created	2022-09-27 11:54:39 MDT by Environmental Department
Updated	2022-09-27 12:00:11 MDT by Environmental Department
Location	37.9752235, -107.7486946

SPCC C-1 Diesel and Gas Storage & Filling Station

Date of Inspection	2022-09-27
Inspection Frequency	Monthly

Gas Tank & Containment (smaller tank)

Do gas tank surfaces show signs of leakage?	No
Is gas tank damaged, rusted or otherwise deteriorating?	No
Are gas tank supports damaged, rusted or otherwise deteriorating?	No
Are gas tank foundations eroded or settled?	No
Gas tank fill level gauge functional?	Yes
Note gas fill level (inches)	24
Are gas vents free of obstruction?	Yes
Is gas secondary containment damaged?	No
Is any maintenance required for gas tank?	No
Note corrective action needed for gas tank	NA

Gas Piping & Transfer Connections

Are gas pipelines or supports damaged, rusted or otherwise deteriorating?	No
Do gas joints, valves, valve seals, gaskets or other appurtenances show signs of leakage?	No
Loading/unloading gas connections are capped or blank flanged?	Yes
Is any maintenance required on gas connections?	No
Note corrective action needed for gas transfer and connections	NA

Diesel Tank & Containment (larger tank)

Do diesel tank surfaces show signs of leakage?	No
Is diesel tank damaged, rusted or otherwise deteriorating?	No
Are diesel tank supports damaged, rusted or otherwise deteriorating?	No
Are diesel tank foundations eroded or settled?	No
Diesel fill level gauge functional?	Yes
Note diesel fill level (inches)	30
Are diesel tank vents free of obstruction?	Yes
Is diesel secondary containment damaged?	No
Is any maintenance required for diesel tank?	No
Note corrective action needed for diesel tank	NA

Diesel Piping & Transfer Connections

Are diesel pipelines or supports damaged, rusted or otherwise deteriorating?	No
Do diesel joints, valves, valve seals, gaskets or other appurtenances show signs of leakage?	No
Loading/unloading deisel connections are capped or blank flanged?	Yes
Is any maintenance required on diesel connections?	No
Note corrective action needed for diesel transfer and connections	NA

Security

Are fencing, gates or lighting functional?	Yes
Are pumps & valves locked when not in use?	Yes
Is any maintenance required for security?	No
Note corrective action needed for security	NA

Response Equipment

Is a spill kit present?	Yes
Is equipment inventory complete?	Yes
Is any maintenance required for response equipment?	No
Note corrective action needed for response equipment	NA

Tank photos (both tanks)



Inspector's name

Todd Jesse

Signature

Signed 2022-09-27 11:59:39 MDT

2022-10-31

Created	2022-10-31 10:36:59 MDT by Environmental Department
Updated	2022-10-31 10:40:04 MDT by Environmental Department
Location	37.9753017, -107.7487814

SPCC C-1 Diesel and Gas Storage & Filling Station

Date of Inspection	2022-10-31
Inspection Frequency	Monthly

Gas Tank & Containment (smaller tank)

Do gas tank surfaces show signs of leakage?	No
Is gas tank damaged, rusted or otherwise deteriorating?	No
Are gas tank supports damaged, rusted or otherwise deteriorating?	No
Are gas tank foundations eroded or settled?	No
Gas tank fill level gauge functional?	Yes
Note gas fill level (inches)	30
Are gas vents free of obstruction?	Yes
Is gas secondary containment damaged?	No
Is any maintenance required for gas tank?	No
Note corrective action needed for gas tank	NA

Gas Piping & Transfer Connections

Are gas pipelines or supports damaged, rusted or otherwise deteriorating?	No
Do gas joints, valves, valve seals, gaskets or other appurtenances show signs of leakage?	No
Loading/unloading gas connections are capped or blank flanged?	Yes
Is any maintenance required on gas connections?	No
Note corrective action needed for gas transfer and connections	NA

Diesel Tank & Containment (larger tank)

Do diesel tank surfaces show signs of leakage?	No
Is diesel tank damaged, rusted or otherwise deteriorating?	No
Are diesel tank supports damaged, rusted or otherwise deteriorating?	No
Are diesel tank foundations eroded or settled?	No
Diesel fill level gauge functional?	Yes
Note diesel fill level (inches)	48
Are diesel tank vents free of obstruction?	Yes
Is diesel secondary containment damaged?	No
Is any maintenance required for diesel tank?	No
Note corrective action needed for diesel tank	NA

Diesel Piping & Transfer Connections

Are diesel pipelines or supports damaged, rusted or otherwise deteriorating?	No
Do diesel joints, valves, valve seals, gaskets or other appurtenances show signs of leakage?	No
Loading/unloading deisel connections are capped or blank flanged?	Yes
Is any maintenance required on diesel connections?	No
Note corrective action needed for diesel transfer and connections	NA

Security

Are fencing, gates or lighting functional?	Yes
Are pumps & valves locked when not in use?	Yes
Is any maintenance required for security?	No
Note corrective action needed for security	NA

Response Equipment

Is a spill kit present?	Yes
Is equipment inventory complete?	Yes
Is any maintenance required for response equipment?	No
Note corrective action needed for response equipment	NA

Tank photos (both tanks)



Inspector's name

Todd Jesse

Signature

A handwritten signature in black ink, appearing to read "TJesse", is written on a white background.

Signed 2022-10-31 10:39:50 MDT

2022-11-30

Created	2023-02-01 15:18:08 MST by Environmental Department
Updated	2023-02-01 15:21:56 MST by Environmental Department
Location	37.973914, -107.7507255

SPCC C-1 Diesel and Gas Storage & Filling Station

Date of Inspection	2022-11-30
Inspection Frequency	Monthly

Gas Tank & Containment (smaller tank)

Do gas tank surfaces show signs of leakage?	No
Is gas tank damaged, rusted or otherwise deteriorating?	No
Are gas tank supports damaged, rusted or otherwise deteriorating?	No
Are gas tank foundations eroded or settled?	No
Gas tank fill level gauge functional?	Yes
Note gas fill level (inches)	15
Are gas vents free of obstruction?	Yes
Is gas secondary containment damaged?	No
Is any maintenance required for gas tank?	No
Note corrective action needed for gas tank	NA

Gas Piping & Transfer Connections

Are gas pipelines or supports damaged, rusted or otherwise deteriorating?	No
Do gas joints, valves, valve seals, gaskets or other appurtenances show signs of leakage?	No
Loading/unloading gas connections are capped or blank flanged?	Yes
Is any maintenance required on gas connections?	No
Note corrective action needed for gas transfer and connections	NA

Diesel Tank & Containment (larger tank)

Do diesel tank surfaces show signs of leakage?	No
Is diesel tank damaged, rusted or otherwise deteriorating?	No
Are diesel tank supports damaged, rusted or otherwise deteriorating?	No
Are diesel tank foundations eroded or settled?	No
Diesel fill level gauge functional?	Yes
Note diesel fill level (inches)	20
Are diesel tank vents free of obstruction?	Yes
Is diesel secondary containment damaged?	No
Is any maintenance required for diesel tank?	No
Note corrective action needed for diesel tank	NA

Diesel Piping & Transfer Connections

Are diesel pipelines or supports damaged, rusted or otherwise deteriorating?	No
Do diesel joints, valves, valve seals, gaskets or other appurtenances show signs of leakage?	No
Loading/unloading deisel connections are capped or blank flanged?	Yes
Is any maintenance required on diesel connections?	No
Note corrective action needed for diesel transfer and connections	NA

Security

Are fencing, gates or lighting functional?	Yes
Are pumps & valves locked when not in use?	Yes
Is any maintenance required for security?	No
Note corrective action needed for security	NA

Response Equipment

Is a spill kit present?	Yes
Is equipment inventory complete?	Yes
Is any maintenance required for response equipment?	No
Note corrective action needed for response equipment	NA

Tank photos (both tanks)





Inspector's name

Todd Jesse

Signature

A handwritten signature in black ink, appearing to read 'Todd Jesse', with a long horizontal line extending to the right.

Signed 2023-02-01 15:21:51 MST

2022-12-22

Created	2022-12-22 10:18:00 MST by Environmental Department
Updated	2022-12-22 10:32:11 MST by Environmental Department
Location	37.9755023, -107.748663

SPCC C-1 Diesel and Gas Storage & Filling Station

Date of Inspection	2022-12-22
Inspection Frequency	Monthly

Gas Tank & Containment (smaller tank)

Do gas tank surfaces show signs of leakage?	No
Is gas tank damaged, rusted or otherwise deteriorating?	No
Are gas tank supports damaged, rusted or otherwise deteriorating?	No
Are gas tank foundations eroded or settled?	No
Gas tank fill level gauge functional?	Yes
Note gas fill level (inches)	24
Are gas vents free of obstruction?	Yes
Is gas secondary containment damaged?	No
Is any maintenance required for gas tank?	No
Note corrective action needed for gas tank	NA

Gas Piping & Transfer Connections

Are gas pipelines or supports damaged, rusted or otherwise deteriorating?	No
Do gas joints, valves, valve seals, gaskets or other appurtenances show signs of leakage?	No
Loading/unloading gas connections are capped or blank flanged?	Yes
Is any maintenance required on gas connections?	No
Note corrective action needed for gas transfer and connections	NA

Diesel Tank & Containment (larger tank)

Do diesel tank surfaces show signs of leakage?	No
Is diesel tank damaged, rusted or otherwise deteriorating?	No
Are diesel tank supports damaged, rusted or otherwise deteriorating?	No
Are diesel tank foundations eroded or settled?	No
Diesel fill level gauge functional?	Yes
Note diesel fill level (inches)	19
Are diesel tank vents free of obstruction?	Yes
Is diesel secondary containment damaged?	No
Is any maintenance required for diesel tank?	No
Note corrective action needed for diesel tank	NA

Diesel Piping & Transfer Connections

Are diesel pipelines or supports damaged, rusted or otherwise deteriorating?	No
Do diesel joints, valves, valve seals, gaskets or other appurtenances show signs of leakage?	No
Loading/unloading deisel connections are capped or blank flanged?	Yes
Is any maintenance required on diesel connections?	No
Note corrective action needed for diesel transfer and connections	NA

Security

Are fencing, gates or lighting functional?	Yes
Are pumps & valves locked when not in use?	Yes
Is any maintenance required for security?	No
Note corrective action needed for security	NA

Response Equipment

Is a spill kit present?	Yes
Is equipment inventory complete?	Yes
Is any maintenance required for response equipment?	No
Note corrective action needed for response equipment	NA

Tank photos (both tanks)



Inspector's name

Todd Jesse

Signature

A handwritten signature in black ink, appearing to read 'TJesse', is written on a white background.

Signed 2022-12-22 10:20:40 MST

2022-04-28

Created	2022-04-28 10:07:19 MDT by Environmental Department
Updated	2022-04-28 10:10:28 MDT by Environmental Department
Location	37.9743485, -107.7495443

SPCC C-3 Materials Storage Warehouse

Date of Inspection	2022-04-28
Inspection Frequency	Monthly

Containers & Containment

Are containers located within the designated storage area?	Yes
Is debris, spills or other fire hazards present in secondary containment?	No
Is water present in secondary containment?	No
Are drain valves functional?	Yes
Are drain valves in closed position?	Yes
Are gates/doors functional?	Yes
Is isle space adequate?	Yes
Are containers in good condition?	Yes
Are containers closed at time of inspection?	Yes
Are containers labeled correctly?	Yes
Are there any indications of leakage around containers or storage area?	No
Is any maintenance required?	Yes
Note corrective action needed	NA

Response Equipment

Is a spill kit present?	Yes
Is equipment inventory complete?	No
Is any maintenance for response equipment required?	Yes
Note corrective action needed for response equipment	Need addition pads and floor dry

Oil storage photo



Inspector's name Todd Jesse

Signature

A handwritten signature in black ink, consisting of several overlapping loops and a long horizontal stroke extending to the right.

Signed 2022-04-28 10:08:33 MDT

2022-05-30

Created	2022-08-01 15:44:06 MDT by Environmental Department
Updated	2022-08-01 15:45:10 MDT by Environmental Department
Location	38.0386413, -107.6792839

SPCC C-3 Materials Storage Warehouse

Date of Inspection	2022-05-30
Inspection Frequency	Monthly

Containers & Containment

Are containers located within the designated storage area?	Yes
Is debris, spills or other fire hazards present in secondary containment?	No
Is water present in secondary containment?	No
Are drain valves functional?	Yes
Are drain valves in closed position?	Yes
Are gates/doors functional?	Yes
Is isle space adequate?	Yes
Are containers in good condition?	Yes
Are containers closed at time of inspection?	Yes
Are containers labeled correctly?	Yes
Are there any indications of leakage around containers or storage area?	No
Is any maintenance required?	No
Note corrective action needed	NA

Response Equipment

Is a spill kit present?	Yes
Is equipment inventory complete?	Yes
Is any maintenance for response equipment required?	No
Note corrective action needed for response equipment	NA

Oil storage photo



Inspector's name Todd Jesse

Signature

A handwritten signature in black ink, consisting of stylized, overlapping loops and a long horizontal stroke extending to the right.

Signed 2022-08-01 15:45:08 MDT

2022-06-28

Created	2022-06-28 13:11:03 MDT by Environmental Department
Updated	2022-06-28 13:13:53 MDT by Environmental Department
Location	37.9746318, -107.748838

SPCC C-3 Materials Storage Warehouse

Date of Inspection	2022-06-28
Inspection Frequency	Monthly

Containers & Containment

Are containers located within the designated storage area?	Yes
Is debris, spills or other fire hazards present in secondary containment?	No
Is water present in secondary containment?	No
Are drain valves functional?	Yes
Are drain valves in closed position?	Yes
Are gates/doors functional?	Yes
Is isle space adequate?	Yes
Are containers in good condition?	Yes
Are containers closed at time of inspection?	Yes
Are containers labeled correctly?	Yes
Are there any indications of leakage around containers or storage area?	No
Is any maintenance required?	No
Note corrective action needed	NA

Response Equipment

Is a spill kit present?	Yes
Is equipment inventory complete?	No
Is any maintenance for response equipment required?	Yes
Note corrective action needed for response equipment	Needs floor dry and pads.

Oil storage photo



Inspector's name

Todd Jesse

Signature

Signed 2022-06-28 13:13:51 MDT

2022-07-28

Created	2022-08-01 15:17:24 MDT by Environmental Department
Updated	2022-08-01 15:18:33 MDT by Environmental Department
Location	38.038638, -107.6792882

SPCC C-3 Materials Storage Warehouse

Date of Inspection	2022-07-28
Inspection Frequency	Monthly

Containers & Containment

Are containers located within the designated storage area?	Yes
Is debris, spills or other fire hazards present in secondary containment?	No
Is water present in secondary containment?	No
Are drain valves functional?	Yes
Are drain valves in closed position?	Yes
Are gates/doors functional?	Yes
Is isle space adequate?	Yes
Are containers in good condition?	Yes
Are containers closed at time of inspection?	Yes
Are containers labeled correctly?	Yes
Are there any indications of leakage around containers or storage area?	No
Is any maintenance required?	No

Response Equipment

Is a spill kit present?	Yes
Is equipment inventory complete?	Yes
Is any maintenance for response equipment required?	No
Note corrective action needed for response equipment	NA

Oil storage photo



Inspector's name Todd Jesse

Signature

A handwritten signature in black ink, consisting of stylized, overlapping letters that appear to be 'TJR'.

Signed 2022-08-01 15:18:14 MDT

2022-08-24

Created	2022-08-24 12:03:18 MDT by Environmental Department
Updated	2022-08-24 12:04:27 MDT by Environmental Department
Location	,

SPCC C-3 Materials Storage Warehouse

Date of Inspection	2022-08-24
Inspection Frequency	Monthly

Containers & Containment

Are containers located within the designated storage area?	Yes
Is debris, spills or other fire hazards present in secondary containment?	No
Is water present in secondary containment?	No
Are drain valves functional?	Yes
Are drain valves in closed position?	Yes
Are gates/doors functional?	Yes
Is isle space adequate?	Yes
Are containers in good condition?	Yes
Are containers closed at time of inspection?	Yes
Are containers labeled correctly?	Yes
Are there any indications of leakage around containers or storage area?	No
Is any maintenance required?	No
Note corrective action needed	NA

Response Equipment

Is a spill kit present?	Yes
Is equipment inventory complete?	Yes
Is any maintenance for response equipment required?	No
Note corrective action needed for response equipment	NA

Oil storage photo



Inspector's name	Todd Jesse
------------------	------------

Signature

A handwritten signature in black ink, consisting of stylized, overlapping loops and a long horizontal stroke extending to the right.

Signed 2022-08-24 12:04:02 MDT

2022-09-27

Created	2022-09-27 12:11:08 MDT by Environmental Department
Updated	2022-09-27 12:12:44 MDT by Environmental Department
Location	37.9743645, -107.7490708

SPCC C-3 Materials Storage Warehouse

Date of Inspection	2022-09-27
Inspection Frequency	Monthly

Containers & Containment

Are containers located within the designated storage area?	Yes
Is debris, spills or other fire hazards present in secondary containment?	Yes
Is water present in secondary containment?	No
Are drain valves functional?	Yes
Are drain valves in closed position?	Yes
Are gates/doors functional?	Yes
Is isle space adequate?	Yes
Are containers in good condition?	Yes
Are containers closed at time of inspection?	Yes
Are containers labeled correctly?	Yes
Are there any indications of leakage around containers or storage area?	No
Is any maintenance required?	No
Note corrective action needed	NA

Response Equipment

Is a spill kit present?	Yes
Is equipment inventory complete?	Yes
Is any maintenance for response equipment required?	No
Note corrective action needed for response equipment	NA

Oil storage photo



Inspector's name	Todd Jesse
------------------	------------

Signature

A handwritten signature in black ink, consisting of stylized, overlapping loops and a long horizontal stroke extending to the right.

Signed 2022-09-27 12:12:41 MDT

2022-10-31

Created	2022-10-31 11:02:58 MDT by Environmental Department
Updated	2022-10-31 11:04:10 MDT by Environmental Department
Location	37.97451, -107.7487642

SPCC C-3 Materials Storage Warehouse

Date of Inspection	2022-10-31
Inspection Frequency	Monthly

Containers & Containment

Are containers located within the designated storage area?	Yes
Is debris, spills or other fire hazards present in secondary containment?	No
Is water present in secondary containment?	No
Are drain valves functional?	Yes
Are drain valves in closed position?	Yes
Are gates/doors functional?	Yes
Is isle space adequate?	Yes
Are containers in good condition?	Yes
Are containers closed at time of inspection?	Yes
Are containers labeled correctly?	Yes
Are there any indications of leakage around containers or storage area?	No
Is any maintenance required?	No
Note corrective action needed	NA

Response Equipment

Is a spill kit present?	Yes
Is equipment inventory complete?	Yes
Is any maintenance for response equipment required?	No
Note corrective action needed for response equipment	NA

Oil storage photo



Inspector's name	Todd Jesse
------------------	------------

Signature

A handwritten signature in black ink, appearing to be 'T. H. H.', written in a cursive style.

Signed 2022-10-31 11:03:59 MDT

2022-11-30

Created	2023-02-03 11:01:29 MST by Environmental Department
Updated	2023-02-03 11:02:37 MST by Environmental Department
Location	38.0382063, -107.6792231

SPCC C-3 Materials Storage Warehouse

Date of Inspection	2022-11-30
Inspection Frequency	Monthly

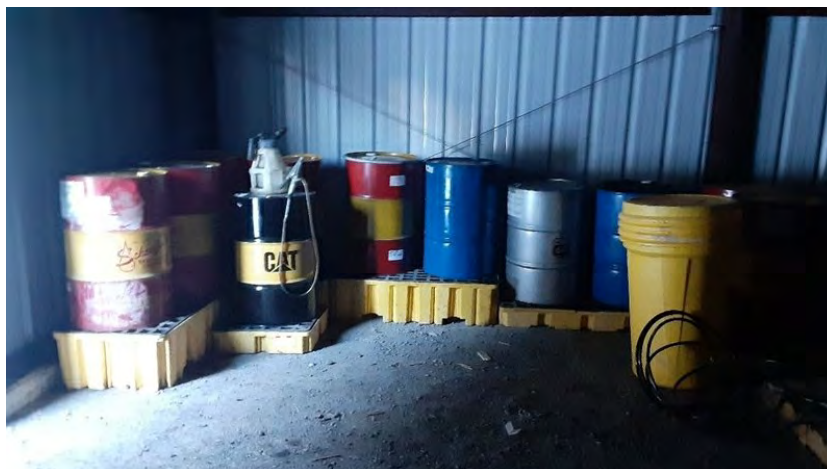
Containers & Containment

Are containers located within the designated storage area?	Yes
Is debris, spills or other fire hazards present in secondary containment?	No
Is water present in secondary containment?	No
Are drain valves functional?	Yes
Are drain valves in closed position?	Yes
Are gates/doors functional?	Yes
Is isle space adequate?	Yes
Are containers in good condition?	Yes
Are containers closed at time of inspection?	Yes
Are containers labeled correctly?	Yes
Are there any indications of leakage around containers or storage area?	No
Is any maintenance required?	No
Note corrective action needed	NA

Response Equipment

Is a spill kit present?	Yes
Is equipment inventory complete?	Yes
Is any maintenance for response equipment required?	No
Note corrective action needed for response equipment	NA

Oil storage photo



Inspector's name Todd Jesse

Signature

A handwritten signature in black ink, appearing to be 'T. H. L.', written in a cursive style.

Signed 2023-02-03 11:02:32 MST

2022-12-22

Created	2022-12-22 11:05:26 MST by Environmental Department
Updated	2022-12-22 11:43:38 MST by Environmental Department
Location	37.9739364, -107.7508281

SPCC C-3 Materials Storage Warehouse

Date of Inspection	2022-12-22
Inspection Frequency	Monthly

Containers & Containment

Are containers located within the designated storage area?	Yes
Is debris, spills or other fire hazards present in secondary containment?	Yes
Is water present in secondary containment?	No
Are drain valves functional?	Yes
Are drain valves in closed position?	Yes
Are gates/doors functional?	Yes
Is isle space adequate?	Yes
Are containers in good condition?	Yes
Are containers closed at time of inspection?	Yes
Are containers labeled correctly?	Yes
Are there any indications of leakage around containers or storage area?	No
Is any maintenance required?	No
Note corrective action needed	NA

Response Equipment

Is a spill kit present?	Yes
Is equipment inventory complete?	Yes
Is any maintenance for response equipment required?	No
Note corrective action needed for response equipment	NA

Oil storage photo



Inspector's name Todd Jesse

Signature

A handwritten signature in black ink, appearing to be 'T. H. A.', written in a cursive style.

Signed 2022-12-22 11:07:02 MST

2022-01-19

Created	2022-01-19 13:27:26 MST by Environmental Department
Updated	2022-01-19 13:30:34 MST by Environmental Department
Location	37.9742046, -107.7492961

SPCC C-4 Waste Storage Pad

Date of inspection	2022-01-19
Inspection Frequency	Monthly

Containers & Containment

Are containers located within the designated storage area?	Yes
Is debris, spills or other fire hazards present in secondary containment?	Yes
Is water present in secondary containment?	Yes
Are drain valves functional?	Yes
Are drain valves in closed position?	Yes
Are gates/doors functional?	Yes
Is isle space adequate?	No
Are containers in good condition?	Yes
Are containers closed at time of inspection?	Yes
Are containers labeled correctly?	Yes
Are there any indications of leakage around containers or storage area?	No
Is any maintenance required?	Yes
Note corrective action needed	Temporary tarp over door. Will repair door once springs comes. Not enough aisle space. Need to move new product to new warehouse.

Response Equipment

Is a spill kit present?	Yes
Is equipment inventory complete?	Yes
Is any maintenance required for response equipment?	No
Note corrective action needed for response equipment	NA

Waste storage photo



Inspector's name

Todd Jesse

Signature

Signed 2022-01-19 13:30:32 MST

2022-02-15

Created	2022-02-15 11:53:02 MST by Environmental Department
Updated	2022-02-15 11:58:30 MST by Environmental Department
Location	37.9739251, -107.7503433

SPCC C-4 Waste Storage Pad

Date of inspection	2022-02-15
Inspection Frequency	Monthly

Containers & Containment

Are containers located within the designated storage area?	Yes
Is debris, spills or other fire hazards present in secondary containment?	No
Is water present in secondary containment?	No
Are drain valves functional?	Yes
Are drain valves in closed position?	Yes
Are gates/doors functional?	Yes
Is isle space adequate?	No
Are containers in good condition?	Yes
Are containers closed at time of inspection?	Yes
Are containers labeled correctly?	Yes
Are there any indications of leakage around containers or storage area?	Yes
Is any maintenance required?	Yes
Note corrective action needed	Empty barrels needs to be organized to make more aisle space. Door fixed since last inspection

Response Equipment

Is a spill kit present?	Yes
Is equipment inventory complete?	Yes
Is any maintenance required for response equipment?	No
Note corrective action needed for response equipment	NA

Waste storage photo



Inspector's name

Todd Jesse

Signature

A handwritten signature in black ink, appearing to be "TJesse".

Signed 2022-02-15 11:55:04 MST

2022-03-29

Created	2022-03-29 09:14:13 MDT by Environmental Department
Updated	2022-03-29 09:16:36 MDT by Environmental Department
Location	37.9743929, -107.7489365

SPCC C-4 Waste Storage Pad

Date of inspection	2022-03-29
Inspection Frequency	Monthly

Containers & Containment

Are containers located within the designated storage area?	Yes
Is debris, spills or other fire hazards present in secondary containment?	Yes
Is water present in secondary containment?	No
Are drain valves functional?	Yes
Are drain valves in closed position?	Yes
Are gates/doors functional?	Yes
Is isle space adequate?	Yes
Are containers in good condition?	Yes
Are containers closed at time of inspection?	Yes
Are containers labeled correctly?	Yes
Are there any indications of leakage around containers or storage area?	No
Is any maintenance required?	No
Note corrective action needed	Small amount of spilt oil in containment. Barrels off spill pallets are empty and being saved for oil change in mill

Response Equipment

Is a spill kit present?	Yes
Is equipment inventory complete?	Yes
Is any maintenance required for response equipment?	No
Note corrective action needed for response equipment	NA

Waste storage photo



Inspector's name

Todd Jesse

Signature

A handwritten signature in black ink, appearing to be 'TJ', written over a horizontal line.

Signed 2022-03-29 09:15:21 MDT

2022-04-28

Created	2022-04-28 10:10:46 MDT by Environmental Department
Updated	2022-04-28 10:17:23 MDT by Environmental Department
Location	37.9744722, -107.7488141

SPCC C-4 Waste Storage Pad

Date of inspection	2022-04-28
Inspection Frequency	Monthly

Containers & Containment

Are containers located within the designated storage area?	Yes
Is debris, spills or other fire hazards present in secondary containment?	No
Is water present in secondary containment?	No
Are drain valves functional?	Yes
Are drain valves in closed position?	Yes
Are gates/doors functional?	Yes
Is aisle space adequate?	No
Are containers in good condition?	Yes
Are containers closed at time of inspection?	Yes
Are containers labeled correctly?	Yes
Are there any indications of leakage around containers or storage area?	No
Is any maintenance required?	Yes
Note corrective action needed	Empty barrels outside of containment were for oil change in mill. That might not happen with shut down. Barrels take up aisle space and need to be disposed of

Response Equipment

Is a spill kit present?	Yes
Is equipment inventory complete?	Yes
Is any maintenance required for response equipment?	No
Note corrective action needed for response equipment	NA

Waste storage photo



Inspector's name

Todd Jesse

Signature

Signed 2022-04-28 10:12:08 MDT

2022-05-30

Created	2022-08-01 15:41:07 MDT by Environmental Department
Updated	2022-08-01 15:42:46 MDT by Environmental Department
Location	38.0386412, -107.6792839

SPCC C-4 Waste Storage Pad

Date of inspection	2022-05-30
Inspection Frequency	Monthly

Containers & Containment

Are containers located within the designated storage area?	Yes
Is debris, spills or other fire hazards present in secondary containment?	Yes
Is water present in secondary containment?	No
Are drain valves functional?	Yes
Are drain valves in closed position?	Yes
Are gates/doors functional?	Yes
Is isle space adequate?	No
Are containers in good condition?	Yes
Are containers closed at time of inspection?	Yes
Are containers labeled correctly?	Yes
Are there any indications of leakage around containers or storage area?	No
Is any maintenance required?	Yes
Note corrective action needed	Empty barrels need to be moved

Response Equipment

Is a spill kit present?	Yes
Is equipment inventory complete?	No
Is any maintenance required for response equipment?	Yes
Note corrective action needed for response equipment	Need more pads

Waste storage photo



Inspector's name

Todd Jesse

Signature

A handwritten signature in black ink, appearing to be "TJ", written over a white background.

Signed 2022-08-01 15:42:12 MDT

2022-06-28

Created	2022-06-28 13:14:21 MDT by Environmental Department
Updated	2022-06-28 13:18:09 MDT by Environmental Department
Location	37.9746398, -107.7488693

SPCC C-4 Waste Storage Pad

Date of inspection	2022-06-28
Inspection Frequency	Monthly

Containers & Containment

Are containers located within the designated storage area?	Yes
Is debris, spills or other fire hazards present in secondary containment?	Yes
Is water present in secondary containment?	No
Are drain valves functional?	Yes
Are drain valves in closed position?	Yes
Are gates/doors functional?	Yes
Is isle space adequate?	No
Are containers in good condition?	Yes
Are containers closed at time of inspection?	Yes
Are containers labeled correctly?	Yes
Are there any indications of leakage around containers or storage area?	No
Is any maintenance required?	Yes
Note corrective action needed	Small amount of oil in spill pallets needs to be removed. Spare barrels for oil change I mill are taking up isle space

Response Equipment

Is a spill kit present?	Yes
Is equipment inventory complete?	Yes
Is any maintenance required for response equipment?	Yes
Note corrective action needed for response equipment	Need more sobent pads.

Waste storage photo



Inspector's name

Todd Jesse

Signature

A handwritten signature in black ink, appearing to read 'TJesse', written over a horizontal line.

Signed 2022-06-28 13:18:07 MDT

2022-07-28

Created	2022-08-01 15:08:02 MDT by Environmental Department
Updated	2022-08-01 15:09:49 MDT by Environmental Department
Location	38.038639, -107.6792911

SPCC C-4 Waste Storage Pad

Date of inspection	2022-07-28
Inspection Frequency	Monthly

Containers & Containment

Are containers located within the designated storage area?	Yes
Is debris, spills or other fire hazards present in secondary containment?	Yes
Is water present in secondary containment?	No
Are drain valves functional?	Yes
Are drain valves in closed position?	Yes
Are gates/doors functional?	Yes
Is isle space adequate?	Yes
Are containers in good condition?	Yes
Are containers closed at time of inspection?	Yes
Are containers labeled correctly?	Yes
Are there any indications of leakage around containers or storage area?	Yes
Is any maintenance required?	Yes
Note corrective action needed	Small amount of grease came out of barrel and needs to be picked up.

Response Equipment

Is a spill kit present?	Yes
Is equipment inventory complete?	Yes
Is any maintenance required for response equipment?	No
Note corrective action needed for response equipment	NA

Waste storage photo



Inspector's name	Todd Jesse
------------------	------------

Signature

A handwritten signature in black ink, consisting of several overlapping, stylized loops and lines.

Signed 2022-08-01 15:09:45 MDT

2022-08-24

Created	2022-08-24 09:58:04 MDT by Environmental Department
Updated	2022-08-24 10:07:25 MDT by Environmental Department
Location	37.974161, -107.7506692

SPCC C-4 Waste Storage Pad

Date of inspection	2022-08-24
Inspection Frequency	Monthly

Containers & Containment

Are containers located within the designated storage area?	Yes
Is debris, spills or other fire hazards present in secondary containment?	No
Is water present in secondary containment?	No
Are drain valves functional?	Yes
Are drain valves in closed position?	Yes
Are gates/doors functional?	Yes
Is isle space adequate?	Yes
Are containers in good condition?	Yes
Are containers closed at time of inspection?	Yes
Are containers labeled correctly?	No
Are there any indications of leakage around containers or storage area?	No
Is any maintenance required?	No
Note corrective action needed	Some barrels appear to have leaks, but it is spillage from pumping out of barrels. Grease barrels broke and we used a solvent to clean it. Looks like a spill, but has been cleaned.

Response Equipment

Is a spill kit present?	Yes
Is equipment inventory complete?	Yes
Is any maintenance required for response equipment?	No
Note corrective action needed for response equipment	NA

Waste storage photo



Inspector's name

Todd Jesse

Signature

Signed 2022-08-24 10:06:58 MDT

2022-09-27

Created	2022-09-27 12:08:32 MDT by Environmental Department
Updated	2022-09-27 12:10:02 MDT by Environmental Department
Location	37.9743974, -107.7493314

SPCC C-4 Waste Storage Pad

Date of inspection	2022-09-27
Inspection Frequency	Monthly

Containers & Containment

Are containers located within the designated storage area?	Yes
Is debris, spills or other fire hazards present in secondary containment?	Yes
Is water present in secondary containment?	No
Are drain valves functional?	Yes
Are drain valves in closed position?	Yes
Are gates/doors functional?	Yes
Is isle space adequate?	Yes
Are containers in good condition?	Yes
Are containers closed at time of inspection?	Yes
Are containers labeled correctly?	Yes
Are there any indications of leakage around containers or storage area?	No
Is any maintenance required?	Yes
Note corrective action needed	Small amount of oil in spill pallets

Response Equipment

Is a spill kit present?	Yes
Is equipment inventory complete?	Yes
Is any maintenance required for response equipment?	No
Note corrective action needed for response equipment	NA

Waste storage photo



Inspector's name	Todd Jesse
------------------	------------

Signature

A handwritten signature in black ink, consisting of stylized, overlapping loops and lines.

Signed 2022-09-27 12:10:00 MDT

2022-10-31

Created	2022-10-31 10:56:23 MDT by Environmental Department
Updated	2022-10-31 10:57:42 MDT by Environmental Department
Location	37.9743488, -107.7490432

SPCC C-4 Waste Storage Pad

Date of inspection	2022-10-31
Inspection Frequency	Monthly

Containers & Containment

Are containers located within the designated storage area?	Yes
Is debris, spills or other fire hazards present in secondary containment?	Yes
Is water present in secondary containment?	No
Are drain valves functional?	Yes
Are drain valves in closed position?	Yes
Are gates/doors functional?	Yes
Is isle space adequate?	Yes
Are containers in good condition?	Yes
Are containers closed at time of inspection?	Yes
Are containers labeled correctly?	Yes
Are there any indications of leakage around containers or storage area?	No
Is any maintenance required?	Yes
Note corrective action needed	Small amount of oil in spill pallets needs to be cleaned

Response Equipment

Is a spill kit present?	Yes
Is equipment inventory complete?	Yes
Is any maintenance required for response equipment?	No
Note corrective action needed for response equipment	NA

Waste storage photo



Inspector's name	Todd Jesse
------------------	------------

Signature

A handwritten signature in black ink, consisting of stylized, overlapping letters that appear to be 'TRZ' or similar.

Signed 2022-10-31 10:57:41 MDT

2022-11-30

Created	2023-02-01 15:10:56 MST by Environmental Department
Updated	2023-02-01 15:12:52 MST by Environmental Department
Location	37.9739584, -107.7506939

SPCC C-4 Waste Storage Pad

Date of inspection	2022-11-30
Inspection Frequency	Monthly

Containers & Containment

Are containers located within the designated storage area?	Yes
Is debris, spills or other fire hazards present in secondary containment?	Yes
Is water present in secondary containment?	No
Are drain valves functional?	Yes
Are drain valves in closed position?	Yes
Are gates/doors functional?	Yes
Is isle space adequate?	No
Are containers in good condition?	Yes
Are containers closed at time of inspection?	Yes
Are containers labeled correctly?	Yes
Are there any indications of leakage around containers or storage area?	No
Is any maintenance required?	Yes
Note corrective action needed	Small amount of oil in spill pallets

Response Equipment

Is a spill kit present?	Yes
Is equipment inventory complete?	Yes
Is any maintenance required for response equipment?	No
Note corrective action needed for response equipment	NA

Waste storage photo



Inspector's name

Todd Jesse

Signature

A handwritten signature in black ink, appearing to read 'Todd Jesse', with a long horizontal stroke extending to the right.

Signed 2023-02-01 15:12:00 MST

2022-12-22

Created	2022-12-22 10:53:23 MST by Environmental Department
Updated	2022-12-22 11:41:09 MST by Environmental Department
Location	37.9739343, -107.7508394

SPCC C-4 Waste Storage Pad

Date of inspection	2022-12-22
Inspection Frequency	Monthly

Containers & Containment

Are containers located within the designated storage area?	Yes
Is debris, spills or other fire hazards present in secondary containment?	No
Is water present in secondary containment?	No
Are drain valves functional?	Yes
Are drain valves in closed position?	Yes
Are gates/doors functional?	Yes
Is isle space adequate?	Yes
Are containers in good condition?	Yes
Are containers closed at time of inspection?	Yes
Are containers labeled correctly?	Yes
Are there any indications of leakage around containers or storage area?	No
Is any maintenance required?	No
Note corrective action needed	Small amount of water

Response Equipment

Is a spill kit present?	Yes
Is equipment inventory complete?	Yes
Is any maintenance required for response equipment?	No
Note corrective action needed for response equipment	NA

Waste storage photo



Inspector's name	Todd Jesse
------------------	------------

Signature

A handwritten signature in black ink, consisting of stylized, overlapping loops and strokes.

Signed 2022-12-22 10:56:27 MST

2022-03-29

Created	2022-03-29 08:40:33 MDT by Environmental Department
Updated	2022-03-29 09:19:50 MDT by Environmental Department
Location	37.9747213, -107.7416354

SPCC C-5 Backup Generator 480V

Date of Inspection	2022-03-29
Inspection Frequency	Monthly

Tank & Containment

Do tank surfaces show signs of leakage?	No
Is tank damaged, rusted or otherwise deteriorating?	No
Are tank supports damaged, rusted or otherwise deteriorating?	No
Are vents free of obstruction?	Yes
Is any maintenance required for tank?	No
Note corrective action needed for tank	Generator no longer in use. Need to be removed from spcc

Piping & Transfer Connections

Are pipelines or supports damaged, rusted or otherwise deteriorating?	No
Do joints, valves, valve seals, gaskets or other appurtenances show signs of leakage?	No
Loading/unloading connections are capped or blank flanged?	Yes
Is any maintenance required?	No
Note corrective action needed	Generator no longer in use

Security

Are fencing, gates or lighting functional?	NA
Are pumps & valves locked when not in use?	NA
Is any maintenance required for security?	No
Note corrective action needed for security	Generator no longer in use

Response Equipment

Is a spill kit present?	No
Is equipment inventory complete?	Yes
Is any maintenance required for response equipment?	No
Note corrective action needed for response equipment	Generator no longer in use

Tank photo



Inspector's name

Todd Jesse

Signature

A handwritten signature in black ink, consisting of stylized, overlapping loops and lines.

Signed 2022-03-29 08:42:44 MDT

2022-10-31

Created	2022-10-31 10:53:31 MDT by Environmental Department
Updated	2022-10-31 10:56:16 MDT by Environmental Department
Location	37.9739181, -107.7499607

SPCC C-5 Backup Generator 480V

Date of Inspection	2022-10-31
Inspection Frequency	Monthly

Tank & Containment

Do tank surfaces show signs of leakage?	No
Is tank damaged, rusted or otherwise deteriorating?	No
Are tank supports damaged, rusted or otherwise deteriorating?	No
Are vents free of obstruction?	No
Is any maintenance required for tank?	No
Note corrective action needed for tank	NA site inactive

Piping & Transfer Connections

Are pipelines or supports damaged, rusted or otherwise deteriorating?	No
Do joints, valves, valve seals, gaskets or other appurtenances show signs of leakage?	No
Loading/unloading connections are capped or blank flanged?	No
Is any maintenance required?	No
Note corrective action needed	NA site inactive

Security

Are fencing, gates or lighting functional?	NA
Are pumps & valves locked when not in use?	NA
Is any maintenance required for security?	No
Note corrective action needed for security	NA site inactive

Response Equipment

Is a spill kit present?	No
Is equipment inventory complete?	No
Is any maintenance required for response equipment?	No
Note corrective action needed for response equipment	NA site inactive

Tank photo



Inspector's name

Todd Jesse

Signature

Signed 2022-10-31 10:54:32 MDT

2022-11-30

Created	2023-02-03 11:04:09 MST by Environmental Department
Updated	2023-02-03 11:05:54 MST by Environmental Department
Location	38.0381963, -107.6792182

SPCC C-5 Backup Generator 480V

Date of Inspection	2022-11-30
Inspection Frequency	Monthly

Tank & Containment

Do tank surfaces show signs of leakage?	No
Is tank damaged, rusted or otherwise deteriorating?	No
Are tank supports damaged, rusted or otherwise deteriorating?	No
Are vents free of obstruction?	Yes
Is any maintenance required for tank?	No
Note corrective action needed for tank	NA no generator

Piping & Transfer Connections

Are pipelines or supports damaged, rusted or otherwise deteriorating?	No
Do joints, valves, valve seals, gaskets or other appurtenances show signs of leakage?	No
Loading/unloading connections are capped or blank flanged?	Yes
Is any maintenance required?	No
Note corrective action needed	NA no generator

Security

Are fencing, gates or lighting functional?	NA
Are pumps & valves locked when not in use?	NA
Is any maintenance required for security?	No
Note corrective action needed for security	NA no generator

Response Equipment

Is a spill kit present?	No
Is equipment inventory complete?	No
Is any maintenance required for response equipment?	No
Note corrective action needed for response equipment	NA no generator

Tank photo



Inspector's name

Todd Jesse

Signature

A handwritten signature in black ink, appearing to read 'TJesse'.

Signed 2023-02-03 11:05:51 MST

2022-12-22

Created	2022-12-22 11:08:41 MST by Environmental Department
Updated	2022-12-22 11:42:53 MST by Environmental Department
Location	37.9739324, -107.7508457

SPCC C-5 Backup Generator 480V

Date of Inspection	2022-12-22
Inspection Frequency	Monthly

Tank & Containment

Do tank surfaces show signs of leakage?	No
Is tank damaged, rusted or otherwise deteriorating?	No
Are tank supports damaged, rusted or otherwise deteriorating?	No
Are vents free of obstruction?	Yes
Is any maintenance required for tank?	No
Note corrective action needed for tank	NA

Piping & Transfer Connections

Are pipelines or supports damaged, rusted or otherwise deteriorating?	No
Do joints, valves, valve seals, gaskets or other appurtenances show signs of leakage?	No
Loading/unloading connections are capped or blank flanged?	Yes
Is any maintenance required?	No
Note corrective action needed	NA. Site inactive. No generator

Security

Are fencing, gates or lighting functional?	NA
Are pumps & valves locked when not in use?	NA
Is any maintenance required for security?	No
Note corrective action needed for security	NA. Site inactive.

Response Equipment

Is a spill kit present?	No
Is equipment inventory complete?	No
Is any maintenance required for response equipment?	No
Note corrective action needed for response equipment	NA

Tank photo



Inspector's name

Todd Jesse

Signature

Signed 2022-12-22 11:16:23 MST

2022-01-19

Created	2022-01-19 12:37:29 MST by Environmental Department
Updated	2022-01-19 12:39:32 MST by Environmental Department
Location	37.9739356, -107.7508129

SPCC C-6 Loci Barn Underground

Date of inspection	2022-01-19
Inspection Frequency	Monthly

Containers & Containment

Are containers located within the designated storage area?	Yes
Is debris, spills or other fire hazards present in secondary containment?	Yes
Is water present in secondary containment?	No
Are drain valves functional?	N/A
Are drain valves in closed position?	N/A
Are gates/doors functional?	Yes
Is isle space adequate?	Yes
Are containers in good condition?	Yes
Are containers closed at time of inspection?	Yes
Are containers labeled correctly?	Yes
Are there any indications of leakage around containers or storage area?	No
Is any maintenance required?	Yes
Note corrective action needed	Empty barrel needs to be removed.

Response Equipment

Is a spill kit present?	Yes
Is equipment inventory complete?	Yes
Is any maintenance required for response equipment?	No
Note corrective action needed for response equipment	NA

Location photo



Inspector's name

Todd Jesse

Signature

A handwritten signature in black ink, appearing to be 'TJ' or similar, written over a white background.

Signed 2022-01-19 12:39:29 MST

2022-02-15

Created	2022-02-15 10:46:00 MST by Environmental Department
Updated	2022-02-15 10:49:19 MST by Environmental Department
Location	,

SPCC C-6 Loci Barn Underground

Date of inspection	2022-02-15
Inspection Frequency	Monthly

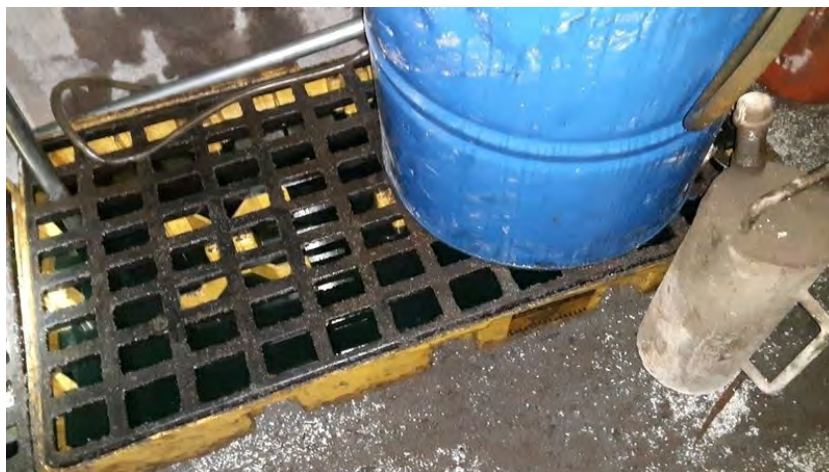
Containers & Containment

Are containers located within the designated storage area?	Yes
Is debris, spills or other fire hazards present in secondary containment?	Yes
Is water present in secondary containment?	No
Are drain valves functional?	N/A
Are drain valves in closed position?	N/A
Are gates/doors functional?	Yes
Is isle space adequate?	Yes
Are containers in good condition?	Yes
Are containers closed at time of inspection?	Yes
Are containers labeled correctly?	Yes
Are there any indications of leakage around containers or storage area?	No
Is any maintenance required?	Yes
Note corrective action needed	Oil from small spill while transferring rickbdrill oil needs to be removed from spill pallets

Response Equipment

Is a spill kit present?	Yes
Is equipment inventory complete?	Yes
Is any maintenance required for response equipment?	No
Note corrective action needed for response equipment	NA

Location photo



Inspector's name

Todd Jesse

Signature

A handwritten signature in black ink, consisting of several overlapping, sweeping strokes.

Signed 2022-02-15 10:49:18 MST

2022-03-29

Created	2022-03-29 08:43:09 MDT by Environmental Department
Updated	2022-03-29 08:52:16 MDT by Environmental Department
Location	37.9742808, -107.7508001

SPCC C-6 Loci Barn Underground

Date of inspection	2022-03-29
Inspection Frequency	Monthly

Containers & Containment

Are containers located within the designated storage area?	Yes
Is debris, spills or other fire hazards present in secondary containment?	No
Is water present in secondary containment?	No
Are drain valves functional?	N/A
Are drain valves in closed position?	N/A
Are gates/doors functional?	No
Is isle space adequate?	Yes
Are containers in good condition?	Yes
Are containers closed at time of inspection?	Yes
Are containers labeled correctly?	Yes
Are there any indications of leakage around containers or storage area?	No
Is any maintenance required?	No
Note corrective action needed	Could not perform inspection. Station located down inactive heading. Portal to mine buried in snow

Response Equipment

Is a spill kit present?	Yes
Is equipment inventory complete?	Yes
Is any maintenance required for response equipment?	No
Note corrective action needed for response equipment	Could not perform inspection. Station located down inactive heading and portal is snowed in

Location photo



Inspector's name

Todd Jesse

Signature

A handwritten signature in black ink, appearing to read 'AJH', with a long horizontal stroke extending to the right.

Signed 2022-03-29 08:45:17 MDT

2022-04-28

Created	2022-04-28 09:50:43 MDT by Environmental Department
Updated	2022-08-01 15:19:12 MDT by Environmental Department
Location	38.038639, -107.6792911

SPCC C-6 Loci Barn Underground

Date of inspection	2022-04-28
Inspection Frequency	Monthly

Containers & Containment

Are containers located within the designated storage area?	Yes
Is debris, spills or other fire hazards present in secondary containment?	No
Is water present in secondary containment?	No
Are drain valves functional?	N/A
Are drain valves in closed position?	N/A
Are gates/doors functional?	No
Is isle space adequate?	Yes
Are containers in good condition?	Yes
Are containers closed at time of inspection?	Yes
Are containers labeled correctly?	Yes
Are there any indications of leakage around containers or storage area?	No
Is any maintenance required?	No
Note corrective action needed	Site down inactive heading. Could not be accessed. Inspection was not completed. Field were filled because they are required to save the form

Response Equipment

Is a spill kit present?	Yes
Is equipment inventory complete?	Yes
Is any maintenance required for response equipment?	No
Note corrective action needed for response equipment	Site down inactive heading. Could not complete inspection

Location photo



Inspector's name

Todd Jesse

Signature

A handwritten signature in black ink, consisting of several overlapping loops and strokes, appearing to read 'Todd Jesse'.

Signed 2022-04-28 09:53:22 MDT

2022-09-27

Created	2022-09-27 12:26:53 MDT by Environmental Department
Updated	2022-09-27 12:27:54 MDT by Environmental Department
Location	37.9741358, -107.7506273

SPCC C-6 Loci Barn Underground

Date of inspection	2022-09-27
Inspection Frequency	Monthly

Containers & Containment

Are containers located within the designated storage area?	No
Is debris, spills or other fire hazards present in secondary containment?	No
Is water present in secondary containment?	No
Are drain valves functional?	N/A
Are drain valves in closed position?	N/A
Are gates/doors functional?	No
Is isle space adequate?	No
Are containers in good condition?	No
Are containers closed at time of inspection?	No
Are containers labeled correctly?	No
Are there any indications of leakage around containers or storage area?	No
Is any maintenance required?	No
Note corrective action needed	Inactive station down inactive heading

Response Equipment

Is a spill kit present?	No
Is equipment inventory complete?	No
Is any maintenance required for response equipment?	No
Note corrective action needed for response equipment	NA inactive station down inactive heading

Location photo



Inspector's name	Todd Jesse
------------------	------------

Signature

A handwritten signature in black ink, consisting of several fluid, overlapping strokes that form an abstract, cursive shape.

Signed 2022-09-27 12:27:53 MDT

2022-10-31

Created	2022-10-31 10:45:24 MDT by Environmental Department
Updated	2022-10-31 10:46:51 MDT by Environmental Department
Location	37.9738414, -107.7503164

SPCC C-6 Loci Barn Underground

Date of inspection	2022-10-31
Inspection Frequency	Monthly

Containers & Containment

Are containers located within the designated storage area?	Yes
Is debris, spills or other fire hazards present in secondary containment?	No
Is water present in secondary containment?	No
Are drain valves functional?	N/A
Are drain valves in closed position?	N/A
Are gates/doors functional?	Yes
Is isle space adequate?	Yes
Are containers in good condition?	Yes
Are containers closed at time of inspection?	Yes
Are containers labeled correctly?	Yes
Are there any indications of leakage around containers or storage area?	No
Is any maintenance required?	No
Note corrective action needed	NA. Inactive. Not being used

Response Equipment

Is a spill kit present?	No
Is equipment inventory complete?	No
Is any maintenance required for response equipment?	No
Note corrective action needed for response equipment	NA. Station is inactive

Location photo



Inspector's name

Todd Jesse

Signature

Signed 2022-10-31 10:46:49 MDT

2022-11-30

Created	2023-02-01 15:51:11 MST by Environmental Department
Updated	2023-02-01 16:05:24 MST by Environmental Department
Location	37.9739277, -107.7507126

SPCC C-6 Loci Barn Underground

Date of inspection	2022-11-30
Inspection Frequency	Monthly

Containers & Containment

Are containers located within the designated storage area?	Yes
Is debris, spills or other fire hazards present in secondary containment?	No
Is water present in secondary containment?	No
Are drain valves functional?	N/A
Are drain valves in closed position?	N/A
Are gates/doors functional?	Yes
Is isle space adequate?	Yes
Are containers in good condition?	Yes
Are containers closed at time of inspection?	Yes
Are containers labeled correctly?	Yes
Are there any indications of leakage around containers or storage area?	No
Is any maintenance required?	No
Note corrective action needed	NA site inactive and down inactive heading.

Response Equipment

Is a spill kit present?	No
Is equipment inventory complete?	No
Is any maintenance required for response equipment?	No
Note corrective action needed for response equipment	NA site is inactive. Located down inactive heading

Location photo



Inspector's name	Todd Jesse
------------------	------------

Signature

A handwritten signature in black ink, appearing to be 'T. H. R.', written in a cursive style.

Signed 2023-02-01 15:52:51 MST

2022-12-22

Created	2022-12-22 11:17:03 MST by Environmental Department
Updated	2022-12-22 11:36:38 MST by Environmental Department
Location	37.9739369, -107.7508272

SPCC C-6 Loci Barn Underground

Date of inspection	2022-12-22
Inspection Frequency	Monthly

Containers & Containment

Are containers located within the designated storage area?	Yes
Is debris, spills or other fire hazards present in secondary containment?	No
Is water present in secondary containment?	No
Are drain valves functional?	N/A
Are drain valves in closed position?	N/A
Are gates/doors functional?	No
Is isle space adequate?	No
Are containers in good condition?	No
Are containers closed at time of inspection?	No
Are containers labeled correctly?	No
Are there any indications of leakage around containers or storage area?	No
Is any maintenance required?	No
Note corrective action needed	Inactive heading. Not an active location

Response Equipment

Is a spill kit present?	Yes
Is equipment inventory complete?	Yes
Is any maintenance required for response equipment?	No
Note corrective action needed for response equipment	Inactive heading

Location photo



Inspector's name

Todd Jesse

Signature

A handwritten signature in black ink, appearing to read 'TJesse'.

Signed 2022-12-22 11:18:02 MST

2022-01-19

Created	2022-01-19 13:05:32 MST by Environmental Department
Updated	2022-01-19 13:07:19 MST by Environmental Department
Location	37.9740852, -107.7496534

SPCC C-7 Underground Shop

Date of inspection	2022-01-19
Inspection Frequency	Monthly

Containers & Containment

Are containers located within the designated storage area?	Yes
Is debris, spills or other fire hazards present in secondary containment?	Yes
Is water present in secondary containment?	No
Are drain valves functional?	Yes
Are drain valves in closed position?	Yes
Are gates/doors functional?	Yes
Is isle space adequate?	Yes
Are containers in good condition?	Yes
Are containers closed at time of inspection?	Yes
Are containers labeled correctly?	Yes
Are there any indications of leakage around containers or storage area?	No
Is any maintenance required?	Yes
Note corrective action needed	Small amount of oil in spill pallet needs to be pumped out.

Response Equipment

Is a spill kit present?	Yes
Is equipment inventory complete?	Yes
Is any maintenance required for response equipment?	No
Note corrective action needed for response equipment	NA

Location photo



Inspector's name

Todd Jesse

Signature

A handwritten signature in black ink, appearing to read 'Todd Jesse', written over a white background.

Signed 2022-01-19 13:06:16 MST

2022-02-15

Created	2022-02-15 11:49:10 MST by Environmental Department
Updated	2022-02-15 11:51:20 MST by Environmental Department
Location	37.9739251, -107.7503433

SPCC C-7 Underground Shop

Date of inspection	2022-02-15
Inspection Frequency	Monthly

Containers & Containment

Are containers located within the designated storage area?	Yes
Is debris, spills or other fire hazards present in secondary containment?	No
Is water present in secondary containment?	No
Are drain valves functional?	Yes
Are drain valves in closed position?	Yes
Are gates/doors functional?	Yes
Is isle space adequate?	Yes
Are containers in good condition?	Yes
Are containers closed at time of inspection?	Yes
Are containers labeled correctly?	Yes
Are there any indications of leakage around containers or storage area?	No
Is any maintenance required?	No
Note corrective action needed	NA

Response Equipment

Is a spill kit present?	Yes
Is equipment inventory complete?	Yes
Is any maintenance required for response equipment?	No
Note corrective action needed for response equipment	Mechanics say they would like more floor dry

Location photo



Inspector's name	Todd Jesse
------------------	------------

Signature

A handwritten signature in black ink, consisting of stylized, overlapping loops and strokes.

Signed 2022-02-15 11:51:17 MST

2022-03-29

Created	2022-03-29 09:09:41 MDT by Environmental Department
Updated	2022-03-29 09:11:49 MDT by Environmental Department
Location	37.9744706, -107.7500995

SPCC C-7 Underground Shop

Date of inspection	2022-03-29
Inspection Frequency	Monthly

Containers & Containment

Are containers located within the designated storage area?	Yes
Is debris, spills or other fire hazards present in secondary containment?	No
Is water present in secondary containment?	No
Are drain valves functional?	Yes
Are drain valves in closed position?	Yes
Are gates/doors functional?	Yes
Is isle space adequate?	Yes
Are containers in good condition?	Yes
Are containers closed at time of inspection?	Yes
Are containers labeled correctly?	Yes
Are there any indications of leakage around containers or storage area?	No
Is any maintenance required?	No
Note corrective action needed	NA

Response Equipment

Is a spill kit present?	Yes
Is equipment inventory complete?	No
Is any maintenance required for response equipment?	Yes
Note corrective action needed for response equipment	Need floor dry

Location photo



Inspector's name

Todd Jesse

Signature

Signed 2022-03-29 09:11:03 MDT

2022-04-28

Created	2022-04-28 09:53:44 MDT by Environmental Department
Updated	2022-04-28 09:55:40 MDT by Environmental Department
Location	,

SPCC C-7 Underground Shop

Date of inspection	2022-04-28
Inspection Frequency	Monthly

Containers & Containment

Are containers located within the designated storage area?	Yes
Is debris, spills or other fire hazards present in secondary containment?	No
Is water present in secondary containment?	No
Are drain valves functional?	Yes
Are drain valves in closed position?	Yes
Are gates/doors functional?	Yes
Is isle space adequate?	Yes
Are containers in good condition?	Yes
Are containers closed at time of inspection?	Yes
Are containers labeled correctly?	Yes
Are there any indications of leakage around containers or storage area?	No
Is any maintenance required?	No
Note corrective action needed	General housekeeping is needed

Response Equipment

Is a spill kit present?	Yes
Is equipment inventory complete?	Yes
Is any maintenance required for response equipment?	No
Note corrective action needed for response equipment	Resupply floor dry

Location photo



Inspector's name	Todd Jesse
------------------	------------

Signature

A handwritten signature in black ink, consisting of several overlapping loops and a long horizontal stroke at the end.

Signed 2022-04-28 09:55:38 MDT

2022-05-30

Created	2022-08-01 15:19:28 MDT by Environmental Department
Updated	2023-02-03 11:45:23 MST by Environmental Department
Location	38.0386384, -107.6792891

SPCC C-7 Underground Shop

Date of inspection	2022-05-30
Inspection Frequency	Monthly

Containers & Containment

Are containers located within the designated storage area?	Yes
Is debris, spills or other fire hazards present in secondary containment?	No
Is water present in secondary containment?	No
Are drain valves functional?	Yes
Are drain valves in closed position?	Yes
Are gates/doors functional?	Yes
Is isle space adequate?	Yes
Are containers in good condition?	Yes
Are containers closed at time of inspection?	Yes
Are containers labeled correctly?	Yes
Are there any indications of leakage around containers or storage area?	No
Is any maintenance required?	No
Note corrective action needed	NA

Response Equipment

Is a spill kit present?	Yes
Is equipment inventory complete?	Yes
Is any maintenance required for response equipment?	No
Note corrective action needed for response equipment	NA

Location photo



Inspector's name	Todd Jesse
------------------	------------

Signature

A handwritten signature in black ink, appearing to be 'T. R.', with a long horizontal line extending to the right.

Signed 2022-08-01 15:20:19 MDT

2022-06-28

Created	2022-06-28 13:26:55 MDT by Environmental Department
Updated	2022-06-28 13:29:29 MDT by Environmental Department
Location	,

SPCC C-7 Underground Shop

Date of inspection	2022-06-28
Inspection Frequency	Monthly

Containers & Containment

Are containers located within the designated storage area?	Yes
Is debris, spills or other fire hazards present in secondary containment?	No
Is water present in secondary containment?	Yes
Are drain valves functional?	Yes
Are drain valves in closed position?	Yes
Are gates/doors functional?	Yes
Is isle space adequate?	Yes
Are containers in good condition?	Yes
Are containers closed at time of inspection?	Yes
Are containers labeled correctly?	Yes
Are there any indications of leakage around containers or storage area?	Yes
Is any maintenance required?	Yes
Note corrective action needed	Runoff caused it to rain in the underground shop. Old oil on the ground was mobilized bit captured by the socks and wattles.

Response Equipment

Is a spill kit present?	Yes
Is equipment inventory complete?	Yes
Is any maintenance required for response equipment?	No
Note corrective action needed for response equipment	NA

Location photo



Inspector's name

Todd Jesse

Signature

A handwritten signature in black ink, appearing to be 'TJ', written over a horizontal line.

Signed 2022-06-28 13:27:41 MDT

2022-08-24

Created	2022-08-24 11:57:03 MDT by Environmental Department
Updated	2022-08-24 12:03:01 MDT by Environmental Department
Location	,

SPCC C-7 Underground Shop

Date of inspection	2022-08-24
Inspection Frequency	Monthly

Containers & Containment

Are containers located within the designated storage area?	Yes
Is debris, spills or other fire hazards present in secondary containment?	Yes
Is water present in secondary containment?	Yes
Are drain valves functional?	Yes
Are drain valves in closed position?	Yes
Are gates/doors functional?	Yes
Is isle space adequate?	Yes
Are containers in good condition?	Yes
Are containers closed at time of inspection?	Yes
Are containers labeled correctly?	Yes
Are there any indications of leakage around containers or storage area?	No
Is any maintenance required?	Yes
Note corrective action needed	Secondary containment pallet has water from leaks on roofs and need to be cleaned.

Response Equipment

Is a spill kit present?	Yes
Is equipment inventory complete?	Yes
Is any maintenance required for response equipment?	No
Note corrective action needed for response equipment	NA

Location photo



Inspector's name

Todd Jesse

Signature

A handwritten signature in black ink, appearing to read 'Todd Jesse', written over a white background.

Signed 2022-08-24 11:59:01 MDT

2022-09-27

Created	2022-09-27 12:20:05 MDT by Environmental Department
Updated	2022-09-27 12:22:37 MDT by Environmental Department
Location	37.9741407, -107.7506053

SPCC C-7 Underground Shop

Date of inspection	2022-09-27
Inspection Frequency	Monthly

Containers & Containment

Are containers located within the designated storage area?	Yes
Is debris, spills or other fire hazards present in secondary containment?	Yes
Is water present in secondary containment?	Yes
Are drain valves functional?	Yes
Are drain valves in closed position?	Yes
Are gates/doors functional?	Yes
Is isle space adequate?	Yes
Are containers in good condition?	Yes
Are containers closed at time of inspection?	Yes
Are containers labeled correctly?	Yes
Are there any indications of leakage around containers or storage area?	Yes
Is any maintenance required?	Yes
Note corrective action needed	Spill pallets needs to be emptied. Floor around the station needs to be cleaned. Sump in shop needs to be mucked out.

Response Equipment

Is a spill kit present?	Yes
Is equipment inventory complete?	Yes
Is any maintenance required for response equipment?	No
Note corrective action needed for response equipment	NA

Location photo



Inspector's name

Todd Jesse

Signature

A handwritten signature in black ink, appearing to read 'TJesse', written over a horizontal line.

Signed 2022-09-27 12:22:35 MDT

2022-10-31

Created	2022-10-31 10:47:56 MDT by Environmental Department
Updated	2022-10-31 10:49:54 MDT by Environmental Department
Location	37.9739181, -107.7499607

SPCC C-7 Underground Shop

Date of inspection	2022-10-31
Inspection Frequency	Monthly

Containers & Containment

Are containers located within the designated storage area?	Yes
Is debris, spills or other fire hazards present in secondary containment?	Yes
Is water present in secondary containment?	Yes
Are drain valves functional?	Yes
Are drain valves in closed position?	Yes
Are gates/doors functional?	Yes
Is isle space adequate?	Yes
Are containers in good condition?	Yes
Are containers closed at time of inspection?	Yes
Are containers labeled correctly?	Yes
Are there any indications of leakage around containers or storage area?	Yes
Is any maintenance required?	Yes
Note corrective action needed	Spill pallets need to be emptied and floor needs to be cleaned before spring runoff

Response Equipment

Is a spill kit present?	Yes
Is equipment inventory complete?	Yes
Is any maintenance required for response equipment?	No
Note corrective action needed for response equipment	NA

Location photo



Inspector's name

Todd Jesse

Signature

Signed 2022-10-31 10:48:35 MDT

2022-11-30

Created	2023-02-03 10:57:06 MST by Environmental Department
Updated	2023-02-03 10:58:20 MST by Environmental Department
Location	38.038201, -107.6792176

SPCC C-7 Underground Shop

Date of inspection	2022-11-30
Inspection Frequency	Monthly

Containers & Containment

Are containers located within the designated storage area?	Yes
Is debris, spills or other fire hazards present in secondary containment?	Yes
Is water present in secondary containment?	No
Are drain valves functional?	Yes
Are drain valves in closed position?	Yes
Are gates/doors functional?	Yes
Is isle space adequate?	Yes
Are containers in good condition?	Yes
Are containers closed at time of inspection?	Yes
Are containers labeled correctly?	Yes
Are there any indications of leakage around containers or storage area?	No
Is any maintenance required?	Yes
Note corrective action needed	Oil needs to be cleaned in secondary containment

Response Equipment

Is a spill kit present?	Yes
Is equipment inventory complete?	Yes
Is any maintenance required for response equipment?	No
Note corrective action needed for response equipment	NA

Location photo



Inspector's name

Todd Jesse

Signature

A handwritten signature in black ink, appearing to be 'T. R. G.', written in a cursive style.

Signed 2023-02-03 10:58:17 MST

2022-12-22

Created	2022-12-22 11:19:03 MST by Environmental Department
Updated	2022-12-22 11:38:24 MST by Environmental Department
Location	37.9739345, -107.750838

SPCC C-7 Underground Shop

Date of inspection	2022-12-22
Inspection Frequency	Monthly

Containers & Containment

Are containers located within the designated storage area?	Yes
Is debris, spills or other fire hazards present in secondary containment?	Yes
Is water present in secondary containment?	Yes
Are drain valves functional?	Yes
Are drain valves in closed position?	Yes
Are gates/doors functional?	Yes
Is isle space adequate?	Yes
Are containers in good condition?	Yes
Are containers closed at time of inspection?	Yes
Are containers labeled correctly?	Yes
Are there any indications of leakage around containers or storage area?	No
Is any maintenance required?	Yes
Note corrective action needed	Secondary containment needs to be emptied

Response Equipment

Is a spill kit present?	Yes
Is equipment inventory complete?	Yes
Is any maintenance required for response equipment?	No
Note corrective action needed for response equipment	NA
Location photo	



Inspector's name

Todd Jesse

Signature

A handwritten signature in black ink, consisting of stylized, cursive letters that appear to be 'T. H. K.' followed by a long horizontal stroke.

Signed 2022-12-22 11:20:35 MST

2022-09-27

Created	2022-09-27 12:15:38 MDT by Environmental Department
Updated	2022-09-27 12:17:20 MDT by Environmental Department
Location	37.9745221, -107.7489057

SPCC C-8 Reagent Room

Date of Inspection	2022-09-27
Inspection Frequency	Monthly

Containers & Containment

Are containers located within the designated storage area?	Yes
Is debris, spills or other fire hazards present in secondary containment?	No
Is water present in secondary containment?	Yes
Are drain valves functional?	Yes
Are drain valves in closed position?	Yes
Are gates/doors functional?	No
Is isle space adequate?	Yes
Are containers in good condition?	Yes
Are containers closed at time of inspection?	Yes
Are containers labeled correctly?	Yes
Are there any indications of leakage around containers or storage area?	No
Is any maintenance required?	No
Note corrective action needed	Inactive. No reagents or hydrocarbons.

Response Equipment

Is a spill kit present?	No
Is equipment inventory complete?	Yes
Is any maintenance for response equipment required?	No
Note corrective action needed for response equipment	No reagents or oil present. Inactive.

Oil storage photo



Inspector's name Todd Jesse

Signature

A handwritten signature in black ink, consisting of several fluid, overlapping strokes that form a stylized, cursive-like shape.

Signed 2022-09-27 12:16:29 MDT

2022-10-31

Created	2022-10-31 10:59:03 MDT by Environmental Department
Updated	2022-10-31 11:00:05 MDT by Environmental Department
Location	37.9743778, -107.7491302

SPCC C-8 Reagent Room

Date of Inspection	2022-10-31
Inspection Frequency	Monthly

Containers & Containment

Are containers located within the designated storage area?	No
Is debris, spills or other fire hazards present in secondary containment?	No
Is water present in secondary containment?	No
Are drain valves functional?	No
Are drain valves in closed position?	No
Are gates/doors functional?	No
Is isle space adequate?	No
Are containers in good condition?	No
Are containers closed at time of inspection?	No
Are containers labeled correctly?	No
Are there any indications of leakage around containers or storage area?	No
Is any maintenance required?	No
Note corrective action needed	NA site inactive

Response Equipment

Is a spill kit present?	No
Is equipment inventory complete?	No
Is any maintenance for response equipment required?	No
Note corrective action needed for response equipment	NA site inactive

Oil storage photo



Inspector's name Todd Jesse

Signature

A handwritten signature in black ink, consisting of stylized, overlapping loops and lines, likely representing the initials 'FLL'.

Signed 2022-10-31 11:00:01 MDT

2022-11-30

Created	2023-02-03 10:58:36 MST by Environmental Department
Updated	2023-02-03 10:59:58 MST by Environmental Department
Location	38.0382009, -107.6792181

SPCC C-8 Reagent Room

Date of Inspection	2022-11-30
Inspection Frequency	Monthly

Containers & Containment

Are containers located within the designated storage area?	Yes
Is debris, spills or other fire hazards present in secondary containment?	No
Is water present in secondary containment?	No
Are drain valves functional?	Yes
Are drain valves in closed position?	Yes
Are gates/doors functional?	Yes
Is isle space adequate?	Yes
Are containers in good condition?	Yes
Are containers closed at time of inspection?	Yes
Are containers labeled correctly?	Yes
Are there any indications of leakage around containers or storage area?	No
Is any maintenance required?	No
Note corrective action needed	NA site not active

Response Equipment

Is a spill kit present?	No
Is equipment inventory complete?	No
Is any maintenance for response equipment required?	No
Note corrective action needed for response equipment	NA no storage of oil or chemicals. Site inactive

Oil storage photo



Inspector's name	Todd Jesse
------------------	------------

Signature

A handwritten signature in black ink, appearing to be 'TMR' or similar, with a stylized, cursive-like flourish.

Signed 2023-02-03 10:59:53 MST

2022-12-22

Created	2022-12-22 11:22:03 MST by Environmental Department
Updated	2022-12-22 11:40:41 MST by Environmental Department
Location	37.9739394, -107.7508197

SPCC C-8 Reagent Room

Date of Inspection	2022-12-22
Inspection Frequency	Monthly

Containers & Containment

Are containers located within the designated storage area?	Yes
Is debris, spills or other fire hazards present in secondary containment?	No
Is water present in secondary containment?	Yes
Are drain valves functional?	Yes
Are drain valves in closed position?	Yes
Are gates/doors functional?	Yes
Is isle space adequate?	Yes
Are containers in good condition?	Yes
Are containers closed at time of inspection?	Yes
Are containers labeled correctly?	Yes
Are there any indications of leakage around containers or storage area?	No
Is any maintenance required?	No
Note corrective action needed	Inactive. No reagents present.

Response Equipment

Is a spill kit present?	Yes
Is equipment inventory complete?	Yes
Is any maintenance for response equipment required?	No
Note corrective action needed for response equipment	Site inactive

Oil storage photo



Inspector's name	Todd Jesse
------------------	------------

Signature

A handwritten signature in black ink, appearing to be 'THL' or similar, with a stylized, cursive-like flourish.

Signed 2022-12-22 11:24:02 MST

2022-09-27

Created	2022-09-27 12:13:19 MDT by Environmental Department
Updated	2022-09-27 12:15:23 MDT by Environmental Department
Location	37.9741388, -107.750609

SPCC C-9 Fuel Storage

Date of Inspection	2022-09-27
Inspection Frequency	Monthly

Diesel Tank & Containment (larger tank)

Do diesel tank surfaces show signs of leakage?	No
Is diesel tank damaged, rusted or otherwise deteriorating?	No
Are diesel tank supports damaged, rusted or otherwise deteriorating?	No
Are diesel tank foundations eroded or settled?	No
Diesel fill level gauge functional?	Yes
Note diesel fill level (inches)	0
Are diesel tank vents free of obstruction?	Yes
Is diesel secondary containment damaged?	No
Is any maintenance required for diesel tank?	No
Note corrective action needed for diesel tank	NA

Diesel Piping & Transfer Connections

Are diesel pipelines or supports damaged, rusted or otherwise deteriorating?	No
Do diesel joints, valves, valve seals, gaskets or other appurtenances show signs of leakage?	No
Loading/unloading diesel connections are capped or blank flanged?	Yes
Is any maintenance required on diesel connections?	No
Note corrective action needed for diesel transfer and connections	NA tank is empty

Security

Are fencing, gates or lighting functional?	Yes
Are pumps & valves locked when not in use?	Yes
Is any maintenance required for security?	No
Note corrective action needed for security	Tank empty. Station not active

Response Equipment

Is a spill kit present?	No
Is equipment inventory complete?	No
Is any maintenance required for response equipment?	No
Note corrective action needed for response equipment	No spill kit needed. Not active

Tank photos (both tanks)



Inspector's name

Todd Jesse

Signature

A handwritten signature in black ink, appearing to read "Todd Jesse", is written on a white background.

Signed 2022-09-27 12:15:20 MDT

2022-10-31

Created	2022-10-31 11:00:24 MDT by Environmental Department
Updated	2022-10-31 11:02:17 MDT by Environmental Department
Location	37.9745541, -107.7488733

SPCC C-9 Fuel Storage

Date of Inspection	2022-10-31
Inspection Frequency	Monthly

Diesel Tank & Containment (larger tank)

Do diesel tank surfaces show signs of leakage?	No
Is diesel tank damaged, rusted or otherwise deteriorating?	No
Are diesel tank supports damaged, rusted or otherwise deteriorating?	No
Are diesel tank foundations eroded or settled?	No
Diesel fill level gauge functional?	No
Note diesel fill level (inches)	0
Are diesel tank vents free of obstruction?	No
Is diesel secondary containment damaged?	No
Is any maintenance required for diesel tank?	No
Note corrective action needed for diesel tank	NA site inactive no fuel present

Diesel Piping & Transfer Connections

Are diesel pipelines or supports damaged, rusted or otherwise deteriorating?	No
Do diesel joints, valves, valve seals, gaskets or other appurtenances show signs of leakage?	No
Loading/unloading diesel connections are capped or blank flanged?	No
Is any maintenance required on diesel connections?	No
Note corrective action needed for diesel transfer and connections	NA site inactive no fuel present

Security

Are fencing, gates or lighting functional?	NA
Are pumps & valves locked when not in use?	NA
Is any maintenance required for security?	No
Note corrective action needed for security	NA site inactive no fuel present

Response Equipment

Is a spill kit present?	No
Is equipment inventory complete?	No
Is any maintenance required for response equipment?	No
Note corrective action needed for response equipment	NA site inactive no fuel present

Tank photos (both tanks)



Inspector's name

Todd Jesse

Signature

A handwritten signature in black ink, appearing to be 'TJesse', written in a stylized, cursive-like font.

Signed 2022-10-31 11:02:11 MDT

2022-11-30

Created	2023-02-03 11:07:24 MST by Environmental Department
Updated	2023-02-03 11:09:01 MST by Environmental Department
Location	38.0382068, -107.6792325

SPCC C-9 Fuel Storage

Date of Inspection	2022-11-30
Inspection Frequency	Monthly

Diesel Tank & Containment (larger tank)

Do diesel tank surfaces show signs of leakage?	No
Is diesel tank damaged, rusted or otherwise deteriorating?	No
Are diesel tank supports damaged, rusted or otherwise deteriorating?	No
Are diesel tank foundations eroded or settled?	No
Diesel fill level gauge functional?	Yes
Note diesel fill level (inches)	0
Are diesel tank vents free of obstruction?	Yes
Is diesel secondary containment damaged?	Yes
Is any maintenance required for diesel tank?	No
Note corrective action needed for diesel tank	NA no fuel In tank

Diesel Piping & Transfer Connections

Are diesel pipelines or supports damaged, rusted or otherwise deteriorating?	No
Do diesel joints, valves, valve seals, gaskets or other appurtenances show signs of leakage?	No
Loading/unloading diesel connections are capped or blank flanged?	Yes
Is any maintenance required on diesel connections?	No
Note corrective action needed for diesel transfer and connections	NA no fuel in tank

Security

Are fencing, gates or lighting functional?	NA
Are pumps & valves locked when not in use?	NA
Is any maintenance required for security?	No
Note corrective action needed for security	No fuel in tank

Response Equipment

Is a spill kit present?	No
Is equipment inventory complete?	No
Is any maintenance required for response equipment?	No
Note corrective action needed for response equipment	NA no fuel

Tank photos (both tanks)



Inspector's name

Todd Jesse

Signature

Signed 2023-02-03 11:08:26 MST

2022-12-22

Created	2022-12-22 11:24:23 MST by Environmental Department
Updated	2022-12-22 11:41:58 MST by Environmental Department
Location	37.9739336, -107.7508391

SPCC C-9 Fuel Storage

Date of Inspection	2022-12-22
Inspection Frequency	Monthly

Diesel Tank & Containment (larger tank)

Do diesel tank surfaces show signs of leakage?	No
Is diesel tank damaged, rusted or otherwise deteriorating?	No
Are diesel tank supports damaged, rusted or otherwise deteriorating?	No
Are diesel tank foundations eroded or settled?	No
Diesel fill level gauge functional?	No
Note diesel fill level (inches)	0
Are diesel tank vents free of obstruction?	Yes
Is diesel secondary containment damaged?	Yes
Is any maintenance required for diesel tank?	Yes
Note corrective action needed for diesel tank	NA

Diesel Piping & Transfer Connections

Are diesel pipelines or supports damaged, rusted or otherwise deteriorating?	No
Do diesel joints, valves, valve seals, gaskets or other appurtenances show signs of leakage?	No
Loading/unloading diesel connections are capped or blank flanged?	No
Is any maintenance required on diesel connections?	No
Note corrective action needed for diesel transfer and connections	NA site inactive

Security

Are fencing, gates or lighting functional?	NA
Are pumps & valves locked when not in use?	NA
Is any maintenance required for security?	No
Note corrective action needed for security	NA

Response Equipment

Is a spill kit present?	No
Is equipment inventory complete?	No
Is any maintenance required for response equipment?	No
Note corrective action needed for response equipment	NA site inactive

Tank photos (both tanks)



Inspector's name

Todd Jesse

Signature

Signed 2022-12-22 11:25:34 MST

2022-09-27

Created	2022-09-27 12:25:02 MDT by Environmental Department
Updated	2022-09-27 12:26:33 MDT by Environmental Department
Location	37.9743246, -107.7494151

SPCC C-10 1800 Level

Date of inspection	2022-09-27
Inspection Frequency	Monthly

Containers & Containment

Are containers located within the designated storage area?	No
Is debris, spills or other fire hazards present in secondary containment?	No
Is water present in secondary containment?	No
Are drain valves functional?	N/A
Are drain valves in closed position?	N/A
Are gates/doors functional?	No
Is isle space adequate?	No
Are containers in good condition?	No
Are containers closed at time of inspection?	No
Are containers labeled correctly?	No
Are there any indications of leakage around containers or storage area?	No
Is any maintenance required?	No
Note corrective action needed	Inactive station. Down inactive heading.

Response Equipment

Is a spill kit present?	No
Is equipment inventory complete?	No
Is any maintenance required for response equipment?	No
Note corrective action needed for response equipment	Inactive station down inactive heading

Location photo



Inspector's name	Todd Jesse
------------------	------------

Signature

A handwritten signature in black ink, consisting of several overlapping, fluid strokes that form an abstract, cursive shape.

Signed 2022-09-27 12:26:29 MDT

2022-10-31

Created	2022-10-31 10:43:09 MDT by Environmental Department
Updated	2022-10-31 10:45:10 MDT by Environmental Department
Location	37.9741338, -107.7507026

SPCC C-10 1800 Level

Date of inspection	2022-10-31
Inspection Frequency	Monthly

Containers & Containment

Are containers located within the designated storage area?	No
Is debris, spills or other fire hazards present in secondary containment?	No
Is water present in secondary containment?	No
Are drain valves functional?	N/A
Are drain valves in closed position?	N/A
Are gates/doors functional?	No
Is isle space adequate?	Yes
Are containers in good condition?	Yes
Are containers closed at time of inspection?	Yes
Are containers labeled correctly?	Yes
Are there any indications of leakage around containers or storage area?	No
Is any maintenance required?	No
Note corrective action needed	NA inactive

Response Equipment

Is a spill kit present?	No
Is equipment inventory complete?	No
Is any maintenance required for response equipment?	No
Note corrective action needed for response equipment	NA inactive.

Location photo



Inspector's name

Todd Jesse

Signature

Signed 2022-10-31 10:44:32 MDT

2022-11-30

Created	2023-02-01 15:27:01 MST by Environmental Department
Updated	2023-02-01 15:28:54 MST by Environmental Department
Location	37.9739286, -107.7507228

SPCC C-10 1800 Level

Date of inspection	2022-11-30
Inspection Frequency	Monthly

Containers & Containment

Are containers located within the designated storage area?	Yes
Is debris, spills or other fire hazards present in secondary containment?	No
Is water present in secondary containment?	No
Are drain valves functional?	N/A
Are drain valves in closed position?	N/A
Are gates/doors functional?	Yes
Is isle space adequate?	Yes
Are containers in good condition?	Yes
Are containers closed at time of inspection?	Yes
Are containers labeled correctly?	Yes
Are there any indications of leakage around containers or storage area?	No
Is any maintenance required?	No
Note corrective action needed	Inactive storage location. Down inactive heading

Response Equipment

Is a spill kit present?	No
Is equipment inventory complete?	No
Is any maintenance required for response equipment?	No
Note corrective action needed for response equipment	Inactive storage location down inactive heading

Location photo



Inspector's name	Todd Jesse
------------------	------------

Signature

A handwritten signature in black ink, consisting of stylized, cursive letters that appear to be 'T' and 'D' followed by a long horizontal stroke.

Signed 2023-02-01 15:28:50 MST

2022-12-22

Created	2022-12-22 10:48:14 MST by Environmental Department
Updated	2022-12-22 11:36:06 MST by Environmental Department
Location	37.9739345, -107.750838

SPCC C-10 1800 Level

Date of inspection	2022-12-22
Inspection Frequency	Monthly

Containers & Containment

Are containers located within the designated storage area?	No
Is debris, spills or other fire hazards present in secondary containment?	No
Is water present in secondary containment?	No
Are drain valves functional?	N/A
Are drain valves in closed position?	N/A
Are gates/doors functional?	No
Is isle space adequate?	No
Are containers in good condition?	No
Are containers closed at time of inspection?	No
Are containers labeled correctly?	No
Are there any indications of leakage around containers or storage area?	No
Is any maintenance required?	No
Note corrective action needed	Station inactive. Down inactive heading.

Response Equipment

Is a spill kit present?	No
Is equipment inventory complete?	No
Is any maintenance required for response equipment?	No
Note corrective action needed for response equipment	Station inactive. Down inactive heading.

Location photo



Inspector's name

Todd Jesse

Signature

A handwritten signature in black ink, appearing to read 'Todd Jesse', written in a cursive, stylized font.

Signed 2022-12-22 10:51:38 MST

2022-09-27

Created	2022-09-27 12:18:08 MDT by Environmental Department
Updated	2022-09-27 12:19:25 MDT by Environmental Department
Location	37.9743065, -107.7494589

SPCC C-11 Mill Tunnel

Date of inspection	2022-09-27
Inspection Frequency	Monthly

Containers & Containment

Are containers located within the designated storage area?	Yes
Is debris, spills or other fire hazards present in secondary containment?	No
Is water present in secondary containment?	No
Are drain valves functional?	N/A
Are drain valves in closed position?	N/A
Are gates/doors functional?	Yes
Is isle space adequate?	Yes
Are containers in good condition?	Yes
Are containers closed at time of inspection?	Yes
Are containers labeled correctly?	Yes
Are there any indications of leakage around containers or storage area?	No
Is any maintenance required?	No
Note corrective action needed	NA

Response Equipment

Is a spill kit present?	Yes
Is equipment inventory complete?	Yes
Is any maintenance required for response equipment?	No
Note corrective action needed for response equipment	NA

Location photo



Inspector's name	Todd Jesse
------------------	------------

Signature

A handwritten signature in black ink, appearing to be 'T. J. L.', written in a cursive style.

Signed 2022-09-27 12:19:22 MDT

2022-10-31

Created	2022-10-31 10:50:59 MDT by Environmental Department
Updated	2022-10-31 10:52:06 MDT by Environmental Department
Location	,

SPCC C-11 Mill Tunnel

Date of inspection	2022-10-31
Inspection Frequency	Monthly

Containers & Containment

Are containers located within the designated storage area?	Yes
Is debris, spills or other fire hazards present in secondary containment?	No
Is water present in secondary containment?	No
Are drain valves functional?	N/A
Are drain valves in closed position?	N/A
Are gates/doors functional?	Yes
Is isle space adequate?	Yes
Are containers in good condition?	Yes
Are containers closed at time of inspection?	Yes
Are containers labeled correctly?	Yes
Are there any indications of leakage around containers or storage area?	No
Is any maintenance required?	No
Note corrective action needed	NA

Response Equipment

Is a spill kit present?	Yes
Is equipment inventory complete?	Yes
Is any maintenance required for response equipment?	No
Note corrective action needed for response equipment	NA

Location photo



Inspector's name

Todd Jesse

Signature



Signed 2022-10-31 10:52:02 MDT

2022-11-30

Created	2023-02-01 15:36:37 MST by Environmental Department
Updated	2023-02-01 15:39:21 MST by Environmental Department
Location	37.973899, -107.7507345

SPCC C-11 Mill Tunnel

Date of inspection	2022-11-30
Inspection Frequency	Monthly

Containers & Containment

Are containers located within the designated storage area?	Yes
Is debris, spills or other fire hazards present in secondary containment?	No
Is water present in secondary containment?	No
Are drain valves functional?	N/A
Are drain valves in closed position?	N/A
Are gates/doors functional?	Yes
Is isle space adequate?	Yes
Are containers in good condition?	Yes
Are containers closed at time of inspection?	Yes
Are containers labeled correctly?	Yes
Are there any indications of leakage around containers or storage area?	No
Is any maintenance required?	No
Note corrective action needed	NA

Response Equipment

Is a spill kit present?	Yes
Is equipment inventory complete?	Yes
Is any maintenance required for response equipment?	No
Note corrective action needed for response equipment	NA

Location photo



Inspector's name

Todd Jesse

Signature

A handwritten signature in black ink, appearing to read 'Todd Jesse', written in a cursive style.

Signed 2023-02-01 15:39:19 MST

2022-12-22

Created	2022-12-22 10:59:23 MST by Environmental Department
Updated	2022-12-22 11:45:55 MST by Environmental Department
Location	37.9739315, -107.7508455

SPCC C-11 Mill Tunnel

Date of inspection	2022-12-22
Inspection Frequency	Monthly

Containers & Containment

Are containers located within the designated storage area?	Yes
Is debris, spills or other fire hazards present in secondary containment?	No
Is water present in secondary containment?	No
Are drain valves functional?	N/A
Are drain valves in closed position?	N/A
Are gates/doors functional?	Yes
Is isle space adequate?	Yes
Are containers in good condition?	Yes
Are containers closed at time of inspection?	Yes
Are containers labeled correctly?	Yes
Are there any indications of leakage around containers or storage area?	No
Is any maintenance required?	No
Note corrective action needed	NA

Response Equipment

Is a spill kit present?	Yes
Is equipment inventory complete?	Yes
Is any maintenance required for response equipment?	No
Note corrective action needed for response equipment	NA

Location photo



Inspector's name

Todd Jesse

Signature

A handwritten signature in black ink, appearing to read "T. Jesse". The signature is stylized with a large, sweeping "T" and a long, horizontal stroke at the end.

Signed 2022-12-22 11:01:24 MST

2022-01-19

Created	2022-01-19 14:17:50 MST by Environmental Department
Updated	2022-01-19 14:29:28 MST by Environmental Department
Location	37.9739417, -107.7507733
Date	2022-01-19
Time	14:17
Weather Conditions	Cloudy. Ground snow covered
Water Present?	No
Notes	Ground snow covered.
Photos	



Inspector	Todd Jesse
-----------	------------

Signature

A handwritten signature in black ink, appearing to read "Todd Jones". The signature is fluid and cursive, with the first name "Todd" and last name "Jones" clearly distinguishable.

Signed 2022-01-19 14:18:53 MST

2022-02-15

Created	2022-02-15 12:08:14 MST by Environmental Department
Updated	2022-02-15 12:31:35 MST by Environmental Department
Location	37.9747268, -107.7508179
Date	2022-02-15
Time	12:08
Weather Conditions	Sunny and snow covered ground
Water Present?	No

Photos



Inspector	Todd Jesse
-----------	------------

Signature

A handwritten signature in black ink, consisting of several overlapping loops and strokes, positioned above a horizontal line.

Signed 2022-02-15 12:11:38 MST

2022-03-29

Created	2022-03-29 09:20:16 MDT by Environmental Department
Updated	2022-03-29 10:27:16 MDT by Environmental Department
Location	37.9742177, -107.749309
Date	2022-03-29
Time	09:20
Weather Conditions	Snowing
Water Present?	No
Notes	Area snow covered. No indication of leak
Photos	



Inspector	Todd Jesse
Signature	

A handwritten signature in black ink, appearing to be 'TJ' or similar, written over a white background.

Signed 2022-03-29 10:27:15 MDT

2022-05-30

Created	2022-08-01 15:39:41 MDT by Environmental Department
Updated	2022-08-01 15:40:42 MDT by Environmental Department
Location	38.0386389, -107.6792827
Date	2022-05-30
Time	15:39
Weather Conditions	Clear
Water Present?	No

Photos



Inspector

Todd Jesse

Signature

A handwritten signature in black ink, consisting of several overlapping, stylized loops and lines.

Signed 2022-08-01 15:40:37 MDT

2022-06-28

Created	2022-06-28 12:52:03 MDT by Environmental Department
Updated	2022-06-28 12:52:57 MDT by Environmental Department
Location	37.9761293, -107.7490522
Date	2022-06-28
Time	12:52
Weather Conditions	Sunny
Water Present?	No
Photos	



Inspector	Todd Jesse
-----------	------------

Signature	
-----------	--

Signed 2022-06-28 12:52:52 MDT

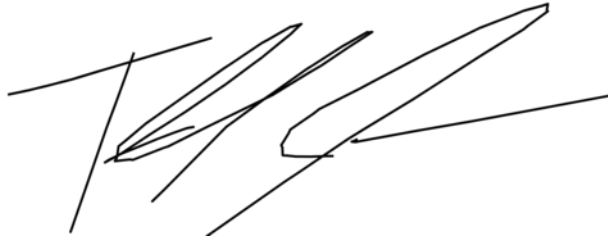
2022-07-25

Created	2022-07-25 12:52:50 MDT by Environmental Department
Updated	2022-07-25 13:52:16 MDT by Environmental Department
Location	37.9743183, -107.750533
Date	2022-07-25
Time	12:52
Weather Conditions	Rainy
Water Present?	Yes
Notes	Wet ground from precipitation
Photos	



Inspector	Todd Jesse
-----------	------------

Signature

A handwritten signature in black ink, consisting of several overlapping, slanted strokes that form a stylized, abstract shape.

Signed 2022-07-25 12:54:41 MDT

2022-09-27

Created	2022-09-27 11:52:30 MDT by Environmental Department
Updated	2022-09-27 11:53:15 MDT by Environmental Department
Location	37.9753604, -107.7484376
Date	2022-09-27
Time	11:52
Weather Conditions	Cloudy
Water Present?	No

Photos



Inspector	Todd Jesse
Signature	

A handwritten signature in black ink, appearing to be 'TJesse'.

Signed 2022-09-27 11:53:12 MDT

2022-10-31

Created	2022-10-31 10:33:32 MDT by Environmental Department
Updated	2022-10-31 10:36:48 MDT by Environmental Department
Location	37.9754454, -107.7482805
Date	2022-10-31
Time	10:33
Weather Conditions	Sunny, ground snow covered.
Water Present?	No
Notes	Area snow covered. Recent storms.
Photos	



Inspector	Todd Jesse
-----------	------------

Signature	
-----------	--

Signed 2022-10-31 10:34:53 MDT

2022-11-30

Created	2023-02-01 15:46:18 MST by Environmental Department
Updated	2023-02-01 15:48:23 MST by Environmental Department
Location	37.9739338, -107.7507078
Date	2022-11-30
Time	15:46
Weather Conditions	Sunny
Water Present?	No

Photos



Inspector

Todd Jesse

Signature

A handwritten signature in black ink, appearing to be 'T. H. Sh.', written in a cursive style.

Signed 2023-02-01 15:46:53 MST

2022-12-22

Created	2022-12-22 10:13:38 MST by Environmental Department
Updated	2022-12-22 10:15:35 MST by Environmental Department
Location	37.9756351, -107.748062
Date	2022-12-22
Time	10:13
Weather Conditions	Snowing
Water Present?	No
Notes	Banks covered in snow. No signs of leaks.
Photos	



Inspector	Todd Jesse
Signature	

A handwritten signature in black ink, appearing to read 'TJesse'.

Signed 2022-12-22 10:14:16 MST

2022-01-19

Created	2022-01-19 13:08:18 MST by Environmental Department
Updated	2022-01-19 13:09:30 MST by Environmental Department
Location	37.9740832, -107.7496535

SPCC - Hazardous Waste SAA

Date of Inspection	2022-01-19
Inspection Frequency	Monthly
Is the satellite area at or near point of waste generation?	Yes
Is the satellite area under the control of the operator?	Yes
Is signage present?	Yes

Aerosolv Unit

Is the unit in good condition?	Yes
Is the unit compatible with the waste being stored?	Yes
Is the unit closed at the time of inspection?	Yes
Is unit labeled correctly?	Yes
Is the unit more than 70% full?	No
Is the secondary containment in good condition?	Yes
Is maintenance required for the aerosolv unit?	No
Note corrective action needed for the aerosolv unit	NA

Rag Bin

Is the container in good condition?	Yes
Is the container compatible with the waste being stored?	Yes
Is the container closed at the time of inspection?	Yes
Is container labeled correctly?	Yes
Is maintenance required for the rag bin?	No
Note corrective action needed for the rag bin	NA

Response Equipment

Is a spill kit present?	Yes
Is equipment inventory complete?	Yes
Is maintenance for response equipment required?	No
Note corrective action needed for response equipment	NA
Inspector's name	Todd Jesse

Signature

A handwritten signature in black ink, consisting of stylized, overlapping loops and a long horizontal stroke extending to the right.

Signed 2022-01-19 13:09:28 MST

2022-02-15

Created	2022-02-15 11:58:39 MST by Environmental Department
Updated	2022-02-15 12:00:04 MST by Environmental Department
Location	37.9750615, -107.7484243

SPCC - Hazardous Waste SAA

Date of Inspection	2022-02-15
Inspection Frequency	Monthly
Is the satellite area at or near point of waste generation?	Yes
Is the satellite area under the control of the operator?	Yes
Is signage present?	Yes

Aerosolv Unit

Is the unit in good condition?	Yes
Is the unit compatible with the waste being stored?	Yes
Is the unit closed at the time of inspection?	Yes
Is unit labeled correctly?	Yes
Is the unit more than 70% full?	No
Is the secondary containment in good condition?	Yes
Is maintenance required for the aerosolv unit?	No
Note corrective action needed for the aerosolv unit	NA

Rag Bin

Is the container in good condition?	Yes
Is the container compatible with the waste being stored?	Yes
Is the container closed at the time of inspection?	Yes
Is container labeled correctly?	Yes
Is maintenance required for the rag bin?	No
Note corrective action needed for the rag bin	NA

Response Equipment

Is a spill kit present?	Yes
Is equipment inventory complete?	Yes
Is maintenance for response equipment required?	No
Note corrective action needed for response equipment	NA
Inspector's name	Todd Jesse

Signature

A handwritten signature in black ink, consisting of stylized, cursive letters that appear to be 'M' and 'B' followed by a long horizontal stroke.

Signed 2022-02-15 12:00:01 MST

2022-03-29

Created	2022-03-29 09:16:48 MDT by Environmental Department
Updated	2022-03-29 09:17:37 MDT by Environmental Department
Location	37.9745593, -107.7490137

SPCC - Hazardous Waste SAA

Date of Inspection	2022-03-29
Inspection Frequency	Monthly
Is the satellite area at or near point of waste generation?	Yes
Is the satellite area under the control of the operator?	Yes
Is signage present?	Yes

Aerosolv Unit

Is the unit in good condition?	Yes
Is the unit compatible with the waste being stored?	Yes
Is the unit closed at the time of inspection?	Yes
Is unit labeled correctly?	Yes
Is the unit more than 70% full?	No
Is the secondary containment in good condition?	Yes
Is maintenance required for the aerosolv unit?	No
Note corrective action needed for the aerosolv unit	NA

Rag Bin

Is the container in good condition?	Yes
Is the container compatible with the waste being stored?	Yes
Is the container closed at the time of inspection?	Yes
Is container labeled correctly?	Yes
Is maintenance required for the rag bin?	No
Note corrective action needed for the rag bin	NA

Response Equipment

Is a spill kit present?	Yes
Is equipment inventory complete?	Yes
Is maintenance for response equipment required?	No
Note corrective action needed for response equipment	NA
Inspector's name	Todd Jesse

Signature

A handwritten signature in black ink, consisting of several overlapping, fluid strokes that form an abstract, cursive shape.

Signed 2022-03-29 09:17:36 MDT

2022-04-28

Created	2022-04-28 10:20:05 MDT by Environmental Department
Updated	2022-04-28 10:22:07 MDT by Environmental Department
Location	37.9745546, -107.7490689

SPCC - Hazardous Waste SAA

Date of Inspection	2022-04-28
Inspection Frequency	Monthly
Is the satellite area at or near point of waste generation?	Yes
Is the satellite area under the control of the operator?	Yes
Is signage present?	Yes

Aerosolv Unit

Is the unit in good condition?	Yes
Is the unit compatible with the waste being stored?	Yes
Is the unit closed at the time of inspection?	Yes
Is unit labeled correctly?	Yes
Is the unit more than 70% full?	No
Is the secondary containment in good condition?	Yes
Is maintenance required for the aerosolv unit?	No
Note corrective action needed for the aerosolv unit	NA

Rag Bin

Is the container in good condition?	Yes
Is the container compatible with the waste being stored?	Yes
Is the container closed at the time of inspection?	Yes
Is container labeled correctly?	Yes
Is maintenance required for the rag bin?	No
Note corrective action needed for the rag bin	NA

Response Equipment

Is a spill kit present?	Yes
Is equipment inventory complete?	No
Is maintenance for response equipment required?	No
Note corrective action needed for response equipment	NA
Inspector's name	Todd Jesse

Signature

A handwritten signature in black ink, consisting of several overlapping loops and a long horizontal stroke extending to the right.

Signed 2022-04-28 10:21:59 MDT

2022-05-30

Created	2022-08-01 15:43:04 MDT by Environmental Department
Updated	2022-08-01 15:43:56 MDT by Environmental Department
Location	38.0386414, -107.6792838

SPCC - Hazardous Waste SAA

Date of Inspection	2022-05-30
Inspection Frequency	Monthly
Is the satellite area at or near point of waste generation?	Yes
Is the satellite area under the control of the operator?	Yes
Is signage present?	Yes

Aerosolv Unit

Is the unit in good condition?	Yes
Is the unit compatible with the waste being stored?	Yes
Is the unit closed at the time of inspection?	Yes
Is unit labeled correctly?	Yes
Is the unit more than 70% full?	No
Is the secondary containment in good condition?	Yes
Is maintenance required for the aerosolv unit?	Yes
Note corrective action needed for the aerosolv unit	NA

Rag Bin

Is the container in good condition?	Yes
Is the container compatible with the waste being stored?	Yes
Is the container closed at the time of inspection?	Yes
Is container labeled correctly?	Yes
Is maintenance required for the rag bin?	No
Note corrective action needed for the rag bin	NA

Response Equipment

Is a spill kit present?	Yes
Is equipment inventory complete?	Yes
Is maintenance for response equipment required?	No
Note corrective action needed for response equipment	NA
Inspector's name	Todd Jesse

Signature

A handwritten signature in black ink, consisting of stylized, overlapping loops and a long horizontal stroke extending to the right.

Signed 2022-08-01 15:43:51 MDT

2022-06-28

Created	2022-06-28 13:18:20 MDT by Environmental Department
Updated	2022-06-28 13:19:58 MDT by Environmental Department
Location	37.974403, -107.748937

SPCC - Hazardous Waste SAA

Date of Inspection	2022-06-28
Inspection Frequency	Monthly
Is the satellite area at or near point of waste generation?	Yes
Is the satellite area under the control of the operator?	Yes
Is signage present?	Yes

Aerosolv Unit

Is the unit in good condition?	Yes
Is the unit compatible with the waste being stored?	Yes
Is the unit closed at the time of inspection?	Yes
Is unit labeled correctly?	Yes
Is the unit more than 70% full?	No
Is the secondary containment in good condition?	Yes
Is maintenance required for the aerosolv unit?	No

Rag Bin

Is the container in good condition?	Yes
Is the container compatible with the waste being stored?	Yes
Is the container closed at the time of inspection?	Yes
Is container labeled correctly?	Yes
Is maintenance required for the rag bin?	No
Note corrective action needed for the rag bin	NA

Response Equipment

Is a spill kit present?	Yes
Is equipment inventory complete?	Yes
Is maintenance for response equipment required?	Yes
Note corrective action needed for response equipment	Need more sorbent pads
Inspector's name	Todd Jesse

Signature

A handwritten signature in black ink, consisting of stylized, overlapping loops and strokes.

Signed 2022-06-28 13:19:43 MDT

2022-07-28

Created	2022-08-01 15:11:01 MDT by Environmental Department
Updated	2022-08-01 15:11:49 MDT by Environmental Department
Location	38.0386379, -107.6792836

SPCC - Hazardous Waste SAA

Date of Inspection	2022-07-28
Inspection Frequency	Monthly
Is the satellite area at or near point of waste generation?	Yes
Is the satellite area under the control of the operator?	Yes
Is signage present?	Yes

Aerosolv Unit

Is the unit in good condition?	Yes
Is the unit compatible with the waste being stored?	Yes
Is the unit closed at the time of inspection?	Yes
Is unit labeled correctly?	Yes
Is the unit more than 70% full?	No
Is the secondary containment in good condition?	Yes
Is maintenance required for the aerosolv unit?	No

Rag Bin

Is the container in good condition?	Yes
Is the container compatible with the waste being stored?	Yes
Is the container closed at the time of inspection?	Yes
Is container labeled correctly?	Yes
Is maintenance required for the rag bin?	No
Note corrective action needed for the rag bin	NA

Response Equipment

Is a spill kit present?	Yes
Is equipment inventory complete?	Yes
Is maintenance for response equipment required?	No
Note corrective action needed for response equipment	NA
Inspector's name	Todd Jesse

Signature

A handwritten signature in black ink, consisting of several overlapping, stylized strokes that form an abstract, cursive shape.

Signed 2022-08-01 15:11:48 MDT

2022-08-24

Created	2022-08-24 10:07:37 MDT by Environmental Department
Updated	2022-08-24 10:08:49 MDT by Environmental Department
Location	37.9741569, -107.7506847

SPCC - Hazardous Waste SAA

Date of Inspection	2022-08-24
Inspection Frequency	Monthly
Is the satellite area at or near point of waste generation?	Yes
Is the satellite area under the control of the operator?	Yes
Is signage present?	Yes

Aerosolv Unit

Is the unit in good condition?	Yes
Is the unit compatible with the waste being stored?	Yes
Is the unit closed at the time of inspection?	Yes
Is unit labeled correctly?	Yes
Is the unit more than 70% full?	No
Is the secondary containment in good condition?	Yes
Is maintenance required for the aerosolv unit?	No
Note corrective action needed for the aerosolv unit	NA

Rag Bin

Is the container in good condition?	Yes
Is the container compatible with the waste being stored?	Yes
Is the container closed at the time of inspection?	Yes
Is container labeled correctly?	Yes
Is maintenance required for the rag bin?	No
Note corrective action needed for the rag bin	NA

Response Equipment

Is a spill kit present?	Yes
Is equipment inventory complete?	Yes
Is maintenance for response equipment required?	No
Note corrective action needed for response equipment	NA
Inspector's name	Todd Jesse

Signature

A handwritten signature in black ink, consisting of stylized, overlapping loops and a long horizontal stroke at the end.

Signed 2022-08-24 10:08:42 MDT

2022-09-27

Created	2022-09-27 12:10:09 MDT by Environmental Department
Updated	2022-09-27 12:10:55 MDT by Environmental Department
Location	37.9743046, -107.7491798

SPCC - Hazardous Waste SAA

Date of Inspection	2022-09-27
Inspection Frequency	Monthly
Is the satellite area at or near point of waste generation?	Yes
Is the satellite area under the control of the operator?	Yes
Is signage present?	Yes

Aerosolv Unit

Is the unit in good condition?	Yes
Is the unit compatible with the waste being stored?	Yes
Is the unit closed at the time of inspection?	Yes
Is unit labeled correctly?	Yes
Is the unit more than 70% full?	No
Is the secondary containment in good condition?	Yes
Is maintenance required for the aerosolv unit?	No
Note corrective action needed for the aerosolv unit	NA

Rag Bin

Is the container in good condition?	Yes
Is the container compatible with the waste being stored?	Yes
Is the container closed at the time of inspection?	Yes
Is container labeled correctly?	Yes
Is maintenance required for the rag bin?	No
Note corrective action needed for the rag bin	NA

Response Equipment

Is a spill kit present?	Yes
Is equipment inventory complete?	Yes
Is maintenance for response equipment required?	No
Note corrective action needed for response equipment	NA
Inspector's name	Todd Jesse

Signature

A handwritten signature in black ink, consisting of a series of loops and a long horizontal stroke extending to the right.

Signed 2022-09-27 12:10:52 MDT

2022-10-31

Created	2022-10-31 10:57:55 MDT by Environmental Department
Updated	2022-10-31 10:58:42 MDT by Environmental Department
Location	37.9744328, -107.7491483

SPCC - Hazardous Waste SAA

Date of Inspection	2022-10-31
Inspection Frequency	Monthly
Is the satellite area at or near point of waste generation?	Yes
Is the satellite area under the control of the operator?	Yes
Is signage present?	Yes

Aerosolv Unit

Is the unit in good condition?	Yes
Is the unit compatible with the waste being stored?	Yes
Is the unit closed at the time of inspection?	Yes
Is unit labeled correctly?	Yes
Is the unit more than 70% full?	No
Is the secondary containment in good condition?	Yes
Is maintenance required for the aerosolv unit?	No
Note corrective action needed for the aerosolv unit	NA

Rag Bin

Is the container in good condition?	Yes
Is the container compatible with the waste being stored?	Yes
Is the container closed at the time of inspection?	Yes
Is container labeled correctly?	Yes
Is maintenance required for the rag bin?	No
Note corrective action needed for the rag bin	NA

Response Equipment

Is a spill kit present?	Yes
Is equipment inventory complete?	Yes
Is maintenance for response equipment required?	No
Note corrective action needed for response equipment	NA
Inspector's name	Todd Jesse

Signature

A handwritten signature in black ink, appearing to be 'T. J. M.', written in a cursive style.

Signed 2022-10-31 10:58:39 MDT

2022-11-30

Created	2023-02-01 15:15:13 MST by Environmental Department
Updated	2023-02-01 15:16:12 MST by Environmental Department
Location	37.9739111, -107.7507285

SPCC - Hazardous Waste SAA

Date of Inspection	2022-11-30
Inspection Frequency	Monthly
Is the satellite area at or near point of waste generation?	Yes
Is the satellite area under the control of the operator?	Yes
Is signage present?	Yes

Aerosolv Unit

Is the unit in good condition?	Yes
Is the unit compatible with the waste being stored?	Yes
Is the unit closed at the time of inspection?	Yes
Is unit labeled correctly?	Yes
Is the unit more than 70% full?	No
Is the secondary containment in good condition?	Yes
Is maintenance required for the aerosolv unit?	No
Note corrective action needed for the aerosolv unit	NA

Rag Bin

Is the container in good condition?	Yes
Is the container compatible with the waste being stored?	Yes
Is the container closed at the time of inspection?	Yes
Is container labeled correctly?	Yes
Is maintenance required for the rag bin?	No
Note corrective action needed for the rag bin	NA

Response Equipment

Is a spill kit present?	Yes
Is equipment inventory complete?	Yes
Is maintenance for response equipment required?	No
Note corrective action needed for response equipment	NA
Inspector's name	Todd Jesse

Signature

A handwritten signature in black ink, appearing to be 'T. H. L.' followed by a long horizontal stroke.

Signed 2023-02-01 15:16:07 MST

2022-12-22

Created	2022-12-22 10:41:48 MST by Environmental Department
Updated	2022-12-22 10:47:51 MST by Environmental Department
Location	37.9739345, -107.750841

SPCC - Hazardous Waste SAA

Date of Inspection	2022-12-22
Inspection Frequency	Monthly
Is the satellite area at or near point of waste generation?	Yes
Is the satellite area under the control of the operator?	Yes
Is signage present?	Yes

Aerosolv Unit

Is the unit in good condition?	Yes
Is the unit compatible with the waste being stored?	Yes
Is the unit closed at the time of inspection?	Yes
Is unit labeled correctly?	Yes
Is the unit more than 70% full?	No
Is the secondary containment in good condition?	Yes
Is maintenance required for the aerosolv unit?	No
Note corrective action needed for the aerosolv unit	NA

Rag Bin

Is the container in good condition?	Yes
Is the container compatible with the waste being stored?	Yes
Is the container closed at the time of inspection?	Yes
Is container labeled correctly?	Yes
Is maintenance required for the rag bin?	No
Note corrective action needed for the rag bin	NA

Response Equipment

Is a spill kit present?	Yes
Is equipment inventory complete?	Yes
Is maintenance for response equipment required?	No
Note corrective action needed for response equipment	NA
Inspector's name	Todd Jesse

Signature

A handwritten signature in black ink, appearing to be 'TKK' with a long horizontal stroke extending to the right.

Signed 2022-12-22 10:47:26 MST

2022-02-15

Created	2022-02-15 12:00:25 MST by Environmental Department
Updated	2022-02-15 12:41:51 MST by Environmental Department
Location	37.974628, -107.7508118

SWMP Site Inspection

Date of Inspection	2022-02-15
Type of Inspection	quarterly

Diversion Ditch #1

Diversion Ditch #1: Is maintenance required?	No
Diversion Ditch #1: note corrective action needed	Snow covered

Collection Ditch #2

Collection Ditch #2: Is maintenance required?	No
Collection Ditch #2: note corrective action needed	Snow covered

Pond #1

Pond #1 Berm: Is maintenance required?	No
Pond #1 Berm: note corrective action needed	Snow covered
Pond #1 Wattles: Is maintenance required?	No
Pond #1 Wattles: note corrective action needed	Snow covered
Pond #1: Is maintenance required?	No
Pond #1 emergency spillway: Is maintenance required?	No
Pond #1 emergency spillway: note corrective action needed	Snow covered

Pond #2

Pond #2 Berm: Is maintenance required?	No
Pond #2 Berm: note corrective action needed	Snow covered
Pond #2 Wattles: Is maintenance required?	No
Pond #2 Wattles: note corrective action needed	Snow covered
Pond #2: Is maintenance required?	No
Pond #2: note corrective action needed	Snow covered
Pond #2 emergency spillway: Is maintenance required?	No
Pond #2 emergency spillway: note corrective action needed	Snow covered

Revenue Seep Wetlands Wattles

Revenue Wetlands Wattles: Is maintenance required?	No
Revenue Wetlands Wattles: note corrective action needed	Snow covered

Pond #3

Pond #3 Berm: Is maintenance required?	No
--	----

Pond #3 Berm: note corrective action needed	Snow covered
Pond #3 Wattles: Is maintenance required?	No
Pond #3 Wattles: note corrective action needed	Snow covered
Pond #3: Is maintenance required?	No
Pond #3: note corrective action needed	Snow covered
Pond #3 emergency spillway: Is maintenance required?	No
Pond #3 emergency spillway: note corrective action needed	Snow covered
Hay bales: Is maintenance required?	No
Hay bales: note corrective action needed	Snow covered

Sneffels Wetlands Wattles

Sneffels Wetlands Wattles: Is maintenance required?	No
Sneffels Wetlands Wattles: note corrective action needed	Snow covered

Roadway Berms

Roadway Berms: Is maintenance required?	No
Roadway Berms: note corrective action needed	Partially snow covered

Chemical and hydrocarbon storage

Are there chemicals or hydrocarbons stored outside designated facilities?	No
Chemicals and hydrocarbons: note locationcorrective action needed	See SPCC for locations and corrective actions
Are spill kits present at designated locations?	Yes

Amendments

Do control measures in field match those on map?	Yes
Has there been a change in facility design, construction, operation or maintenance?	No
Note changes in facility design, construction, operation or maintenance.	NA
Effective date of SWMP	November 2021
Is current operator's certificate on file?	Yes

Photos





Inspector's name

Todd Jesse

Signature

A handwritten signature in black ink. The signature is stylized and appears to be 'Todd Jesse'. It consists of several loops and sharp angles, typical of a cursive or semi-cursive signature.

Signed 2022-02-15 12:06:05 MST

2022-06-28

Created	2022-06-28 12:12:21 MDT by Environmental Department
Updated	2022-07-11 08:55:39 MDT by Environmental Department
Location	,

SWMP Site Inspection

Date of Inspection	2022-06-28
Type of Inspection	Comprehensive

Diversion Ditch #1

Diversion Ditch #1: Is maintenance required?	Yes
Diversion Ditch #1: note corrective action needed	Muck out avalanche debris (downed trees, trash)

Collection Ditch #2

Collection Ditch #2: Is maintenance required?	Yes
Collection Ditch #2: note corrective action needed	Clear out vegetation and debris. Check grade of channel near culvert. Clean out culvert.

Pond #1

Pond #1 Berm: Is maintenance required?	No
Pond #1 Berm: note corrective action needed	None
Pond #1 Wattles: Is maintenance required?	Yes
Pond #1 Wattles: note corrective action needed	Add wattles to section of pond 1 until vegetation establishes.
Pond #1: Is maintenance required?	No
Pond #1 emergency spillway: Is maintenance required?	No
Pond #1 emergency spillway: note corrective action needed	None

Pond #2

Pond #2 Berm: Is maintenance required?	No
Pond #2 Berm: note corrective action needed	None
Pond #2 Wattles: Is maintenance required?	Yes
Pond #2 Wattles: note corrective action needed	Replaced ripped wattles before winter
Pond #2: Is maintenance required?	No
Pond #2: note corrective action needed	None
Pond #2 emergency spillway: Is maintenance required?	No
Pond #2 emergency spillway: note corrective action needed	None

Revenue Seep Wetlands Wattles

Revenue Wetlands Wattles: Is maintenance required?	Yes
Revenue Wetlands Wattles: note corrective action needed	Replace ripped wattles. Remove rocks and debris around wattles.

Pond #3

Pond #3 Berm: Is maintenance required?	No
--	----

Pond #3 Berm: note corrective action needed	None
Pond #3 Wattles: Is maintenance required?	Yes
Pond #3 Wattles: note corrective action needed	Replace ripped wattles by pond 3
Pond #3: Is maintenance required?	No
Pond #3: note corrective action needed	None
Pond #3 emergency spillway: Is maintenance required?	Yes
Pond #3 emergency spillway: note corrective action needed	Needs to be cleared if extra rock
Hay bales: Is maintenance required?	Yes
Hay bales: note corrective action needed	Need to be replaced

Sneffels Wetlands Wattles

Sneffels Wetlands Wattles: Is maintenance required?	No
Sneffels Wetlands Wattles: note corrective action needed	None

Roadway Berms

Roadway Berms: Is maintenance required?	No
Roadway Berms: note corrective action needed	None

Chemical and hydrocarbon storage

Are there chemicals or hydrocarbons stored outside designated facilities?	No
Chemicals and hydrocarbons: note locationcorrective action needed	None
Are spill kits present at designated locations?	Yes

Amendments

Do control measures in field match those on map?	Yes
Has there been a change in facility design, construction, operation or maintenance?	No
Effective date of SWMP	May 2022
Is current operator's certificate on file?	Yes
Inspector's name	Todd Jesse

Signature

A handwritten signature in black ink, consisting of stylized, overlapping loops and a long, sweeping tail stroke.

Signed 2022-06-28 13:12:11 MDT

2022-07-28

Created	2023-02-03 12:12:47 MST by Environmental Department
Updated	2023-02-03 12:18:30 MST by Environmental Department
Location	38.038205, -107.6792269

SWMP Site Inspection

Date of Inspection	2022-07-28
Type of Inspection	quarterly

Diversion Ditch #1

Diversion Ditch #1: Is maintenance required?	Yes
Diversion Ditch #1: note corrective action needed	Muck out debris

Collection Ditch #2

Collection Ditch #2: Is maintenance required?	Yes
Collection Ditch #2: note corrective action needed	Muck vegetation and debris

Pond #1

Pond #1 Berm: Is maintenance required?	No
Pond #1 Berm: note corrective action needed	None
Pond #1 Wattles: Is maintenance required?	Yes
Pond #1 Wattles: note corrective action needed	Need wattles
Pond #1: Is maintenance required?	No
Pond #1 emergency spillway: Is maintenance required?	No
Pond #1 emergency spillway: note corrective action needed	None

Pond #2

Pond #2 Berm: Is maintenance required?	No
Pond #2 Berm: note corrective action needed	None
Pond #2 Wattles: Is maintenance required?	No
Pond #2 Wattles: note corrective action needed	None
Pond #2: Is maintenance required?	No
Pond #2: note corrective action needed	None
Pond #2 emergency spillway: Is maintenance required?	No
Pond #2 emergency spillway: note corrective action needed	None

Revenue Seep Wetlands Wattles

Revenue Wetlands Wattles: Is maintenance required?	Yes
Revenue Wetlands Wattles: note corrective action needed	Replace wattle

Pond #3

Pond #3 Berm: Is maintenance required?	No
--	----

Pond #3 Berm: note corrective action needed	None
Pond #3 Wattles: Is maintenance required?	Yes
Pond #3 Wattles: note corrective action needed	Replace wattle
Pond #3: Is maintenance required?	No
Pond #3: note corrective action needed	None
Pond #3 emergency spillway: Is maintenance required?	No
Pond #3 emergency spillway: note corrective action needed	None
Hay bales: Is maintenance required?	Yes
Hay bales: note corrective action needed	Old. Need to be replaced

Sneffels Wetlands Wattles

Sneffels Wetlands Wattles: Is maintenance required?	No
Sneffels Wetlands Wattles: note corrective action needed	None

Roadway Berms

Roadway Berms: Is maintenance required?	No
Roadway Berms: note corrective action needed	None

Atlas TSF

Atlas TSF Berm: Is maintenance required?	No
Atlas TSF Berm: note corrective action needed	None
Atlas TSF Wattles: Is maintenance required?	No
Atlas TSF Wattles: note corrective action needed	None
Sed Pond #1: Is maintenance required?	No
Sed Pond #1: note corrective action needed	None
stormwater diversion ditch #2: Is maintenance required?	No
stormwater diversion ditch #2: note corrective action needed	None
Access road/spillway: Is maintenance required?	No
Access road/spillway: note corrective action needed	None

Chemical and hydrocarbon storage

Are there chemicals or hydrocarbons stored outside designated facilities?	No
Chemicals and hydrocarbons: note locationcorrective action needed	None
Are spill kits present at designated locations?	Yes

Amendments

Do control measures in field match those on map?	Yes
Has there been a change in facility design, construction, operation or maintenance?	No

Note changes in facility design, construction, operation or maintenance.

None

Effective date of SWMP

May2022

Is current operator's certificate on file?

Yes

Photos





Inspector's name

Todd Jesse

Signature

Signed 2023-02-03 12:18:25 MST

2022-12-22

Created	2022-12-22 11:28:39 MST by Environmental Department
Updated	2022-12-22 11:39:50 MST by Environmental Department
Location	37.9739318, -107.7508463

SWMP Site Inspection

Date of Inspection	2022-12-22
Type of Inspection	quarterly

Diversion Ditch #1

Diversion Ditch #1: Is maintenance required?	No
Diversion Ditch #1: note corrective action needed	Snow covered

Collection Ditch #2

Collection Ditch #2: Is maintenance required?	No
Collection Ditch #2: note corrective action needed	Snow covered

Pond #1

Pond #1 Berm: Is maintenance required?	No
Pond #1 Berm: note corrective action needed	Snow covered
Pond #1 Wattles: Is maintenance required?	No
Pond #1 Wattles: note corrective action needed	Snow covered
Pond #1: Is maintenance required?	No
Pond #1 emergency spillway: Is maintenance required?	No
Pond #1 emergency spillway: note corrective action needed	Snow covered

Pond #2

Pond #2 Berm: Is maintenance required?	No
Pond #2 Berm: note corrective action needed	Snow covered
Pond #2 Wattles: Is maintenance required?	No
Pond #2 Wattles: note corrective action needed	Snow covered
Pond #2: Is maintenance required?	No
Pond #2: note corrective action needed	Snow covered
Pond #2 emergency spillway: Is maintenance required?	No
Pond #2 emergency spillway: note corrective action needed	Snow covered

Revenue Seep Wetlands Wattles

Revenue Wetlands Wattles: Is maintenance required?	No
Revenue Wetlands Wattles: note corrective action needed	Covered

Pond #3

Pond #3 Berm: Is maintenance required?	No
--	----

Pond #3 Berm: note corrective action needed	NA
Pond #3 Wattles: Is maintenance required?	No
Pond #3 Wattles: note corrective action needed	NA
Pond #3: Is maintenance required?	No
Pond #3: note corrective action needed	NA
Pond #3 emergency spillway: Is maintenance required?	No
Pond #3 emergency spillway: note corrective action needed	Snow covered
Hay bales: Is maintenance required?	No
Hay bales: note corrective action needed	Snow covered

Sneffels Wetlands Wattles

Sneffels Wetlands Wattles: Is maintenance required?	No
Sneffels Wetlands Wattles: note corrective action needed	Snow covered

Roadway Berms

Roadway Berms: Is maintenance required?	No
Roadway Berms: note corrective action needed	Snow covered

Atlas TSF

Atlas TSF Berm: Is maintenance required?	No
Atlas TSF Berm: note corrective action needed	Snow covered
Atlas TSF Wattles: Is maintenance required?	No
Atlas TSF Wattles: note corrective action needed	Snow covered
Sed Pond #1: Is maintenance required?	No
Sed Pond #1: note corrective action needed	Snow covered
stormwater diversion ditch #2: Is maintenance required?	No
stormwater diversion ditch #2: note corrective action needed	Snow covered
Access road/spillway: Is maintenance required?	No
Access road/spillway: note corrective action needed	Snow covered

Chemical and hydrocarbon storage

Are there chemicals or hydrocarbons stored outside designated facilities?	No
Chemicals and hydrocarbons: note locationcorrective action needed	NQ
Are spill kits present at designated locations?	Yes

Amendments

Do control measures in field match those on map?	Yes
Has there been a change in facility design, construction, operation or maintenance?	No

Note changes in facility design, construction, operation or maintenance.	NA
Effective date of SWMP	2022
Is current operator's certificate on file?	Yes

Photos



Inspector's name	Todd Jesse
------------------	------------

Signature

A handwritten signature in black ink, consisting of stylized, overlapping letters that appear to be 'Z' and 'A'.

Signed 2022-12-22 11:35:16 MST
