

December 30, 2022

Ms. Sarah Brucker
Division of Water Resources
1313 Sherman Street, Suite 818
Denver, Colorado 80203

RE: Aggregate Industries-WCR, Inc. 2023 CoSSP

Dear Sarah:

On behalf of Aggregate Industries-WCR, Inc. (AI), please find enclosed AI's combined substitute supply plan (CoSSP) renewal request for 2023.

If you have any questions or need further information, please contact me at (303) 452-6611 or email at jareddains@applegategroup.com.

Sincerely,
Applegate Group, Inc.



Jared Dains, P.E.
Water Resources Engineer

JMD/ta

cc: Neil Whitmer, Aggregate Industries
AG File #06-103

N:\06103 Aggregate Industries WRPM\CoSSP\2023\2023 CoSSP transmittal.docx

2023 Combined SWSP Renewal

2023 COMBINED SUBSTITUTE WATER SUPPLY PLAN RENEWAL

South Platte River Basin



December 30, 2022

AG File No. 06-103

Prepared for:



Aggregate Industries — WCR, Inc.
1707 Cole Boulevard, Suite 100
Golden, CO 80401

Prepared by:



Water Resource Advisors for the West
1490 W. 121st Ave., Suite 100
Denver, CO 80234
Phone: 303-452-6611
Fax: 303-452-2759
www.applegategroup.com

TABLE OF CONTENTS

Introduction.....	1
Updated Consumptive Uses and Projected Stream Depletions.....	2
Upper Poudre River	2
Lower Poudre River.....	2
St. Vrain River.....	3
South Platte Mainstem.....	3
Summary of Replacement Sources.....	5
Upper Poudre River	5
Lower Poudre River.....	5
St. Vrain River.....	8
Plum Creek	10
South Platte Mainstem.....	10
Operation of the Plan	14
Dewatering Operations	14
Long-Term Augmentation Responsibilities.....	15
Summary.....	16

FIGURES

Figure 1 - General Location Map for Aggregate's Pits included in the CoSSP

APPENDICES

Appendix A – Combined Water Accounting Summary (Consumptive Use and Replacement)
Individual River Basin Replacement Summaries
Individual Pit Consumptive Use/ Depletions Summaries

Appendix B – Bucklen Lease of Excess Augmentation Credits
Centennial W&S District Lease Confirmation Letter

Appendix C - Consumptive Use Analysis for the CAMAS Fulton Ditch Shares

INTRODUCTION

On behalf of Aggregate Industries – WCR, Inc. (Aggregate), Applegate Group, Inc. (Applegate) is submitting this comprehensive combined substitute supply plan (CoSSP) to account for out-of-priority depletions from its sand & gravel mining operations located throughout the South Platte River Basin, including the St. Vrain River, the Poudre River, and the mainstem of the South Platte River. Aggregate is submitting this request pursuant to Colo. Rev. Stat. §37-90-137(11) and §37-80-120(5), which allows the State Engineer to approve substitute supply plans for out-of-priority depletions caused in connection with sand & gravel mining operations. This CoSSP was last approved by letter on March 28, 2022, which approved the plan through December 31, 2022. The purpose of this request is to renew the CoSSP for calendar year 2023. Applegate intends to electronically pay the \$3,084 SWSP renewal fee for the 12 sites included in this CoSSP.

Of the 12 sites included in this CoSSP, Aggregate expects to actively mine four sites in 2023: WW Farms, Tull, Irwin-Thomas, and Tucson South. One site, Platte Valley, will process imported material mined at Tucson South. The remaining seven sites are inactive: F-Street, Distel, Fredstrom, Jeronimus, Hazeltine, Brighton, and Wattenberg.

The location of each of the sites included in the 2023 CoSSP are shown in Figure 1. Tables outlining the depletions and replacements covered by this CoSSP are contained in Appendix A. This report is organized into three main sections: (1) site updates and depletions, (2) replacement sources, and (3) accounting and operation of the CoSSP. Depletions and replacements are organized into four sub-reaches: Upper Poudre River, Lower Poudre River, St. Vrain River, and the South Platte Mainstem. The projected monthly consumptive uses and stream depletions for all sites are included in Appendix A. To keep the dataset more current, this report only includes data back to 2021. A complete set of data can be provided upon request.

UPDATED CONSUMPTIVE USES AND PROJECTED STREAM DEPLETIONS

This section lists the updated consumptive use and projected stream depletions for each site included in the CoSSP, grouped by sub-basin. Projected consumptive use was based on a review of recent aerial photography and consultation with Aggregate Industries regarding anticipated water use in 2023. The resulting stream depletions were determined by lagging past and projected consumptive use utilizing unit response curves, which were generated using either the Glover or Stream Depletion Factor lagging methodology. The lagging parameter of distance from depletion to stream for all of the pits was established from the centroid of the exposed water surface for pits with only one exposed surface, or from the centroid of the pit at those sites where multiple exposed surfaces exist. These lagging parameters were adjusted and documented in the 2012 CoSSP renewal request or in the original standalone SWSP request in the case of Irwin-Thomas and Fredstrom.

UPPER POUUDRE RIVER

<u>Site</u>	<u>2023 CU</u>	<u>2023 Depletions</u>	<u>Comment</u>
None	0	0	No active sites
Total	0	0	

Aggregate currently does not have any active sites in the Upper Poudre River sub-reach.

LOWER POUUDRE RIVER

<u>Site</u>	<u>2023 CU</u>	<u>2023 Depletions</u>	<u>Comment</u>
WW Farms Pit	205.07	203.65	Actively mining in 2023
F-Street Pit	71.79	71.79	Mining complete, reclamation in progress
Total	276.86	275.44	

Mining operations are anticipated to continue at the WW Farms Pit in 2023. Water use at this site will include dewatering, evaporation from exposed groundwater, dust control, concrete batching, and aggregate production. Evaporative loss will be assessed on the estimated groundwater exposure of 64.0 acres. Dust control use is estimated to equal 0.99 ac-ft per year. Concrete batching is anticipated to use 8.10 ac-ft per year. Aggregate production is expected to equal 592,000 tons per year. WW Farms Pit is the subject of a decreed plan for augmentation in Case No. 90CW23; however, since, final reclamation of the site has not yet occurred, all depletions from the pit will continue to be replaced under this CoSSP.

Mining is complete at the F-Street Pit and reclamation is in progress. Water use at the F-Street Pit in 2023 will consist of evaporation from exposed groundwater. The exposed surface area is estimated to equal 26.2 acres. All post-pumping depletions from prior dewatering of the site have been replaced.

ST. VRAIN RIVER

<u>Site</u>	<u>2023 CU</u>	<u>2023 Depletions</u>	<u>Comment</u>
Distel Pit	1.54	1.54	Mining complete; reclamation in progress
Tull Pit	31.44	27.39	Actively mining in 2023
Irwin-Thomas Pit	47.29	28.40	Actively mining in 2023
Fredstrom Pit	0.00	0.00	Site inactive in 2023
Total	80.27	57.33	

Mining operations at the Distel Pit were completed in 2011. Reclamation is in progress and will continue in 2023. Water use at the Distel Pit in 2023 covered by this CoSSP will consist of dust control. The City of Longmont became responsible for evaporation from the site starting November 1, 2011, and Longmont now has a decreed augmentation plan under Case No. 09CW271 to replace these depletions. For the 2023 CoSSP, Aggregate will be responsible for replacing lagged depletions from dust control, past concrete batching, past aggregate production, and post-pumping depletions from prior dewatering, while during the same period the City of Longmont will be responsible for replacing depletions from evaporation and wetlands consumptive use in their separate augmentation plan. The site was dewatered from 1991 to 2013. Aggregate currently has no plans to reactivate dewatering. Post-pumping depletions from past dewatering are accounted for in this CoSSP. Dust control use is estimated at 1.54 ac-ft per year.

Mining operations are anticipated to continue at the Tull Pit in 2023. Water use at this site will consist of dewatering, evaporation from exposed groundwater, aggregate production, and dust control. The anticipated exposed surface area is estimated to be 4.0 acres. Aggregate extraction is expected to equal 684,000 tons per year. Dust control use is estimated to equal 0.99 acre-ft per year.

Mining operations are anticipated to begin at the Irwin-Thomas Pit in 2023. Water use at this site will consist of dewatering, evaporation from exposed groundwater, aggregate production, slurry wall construction, and dust control. The anticipated exposed surface area is estimated to be 1.0 acre. Aggregate extraction is expected to equal 500,000 tons per year. Dust control and slurry wall construction use is estimated to equal 30.00 acre-ft per year.

Mining operations are anticipated to be on hold at the Fredstrom Pit in 2023. There is no anticipated water use at this site in 2023, and no depletions to be replaced.

SOUTH PLATTE MAINSTEM

<u>Site</u>	<u>2023 CU</u>	<u>2023 Depletions</u>	<u>Comment</u>
Jeronimus Pit	15.00	15.57	Backfilling with inert fill ongoing
Hazeltine Pit	0.00	390.05	Reclamation in progress
Brighton Pit	2.73	7.01	Reclamation in progress
Tucson South Pit	32.34	29.25	Actively mining in 2023
Wattenberg Pit	108.38	107.81	Reclamation in progress
Platte Valley Pit	220.05	218.47	Processing imported material in 2023
Total	378.50	768.16	

The Jeronimus Pit is being backfilled with inert fill from various sources as it becomes available. Water use in 2023 will consist solely of evaporation. The current exposed surface area continues to be estimated at approximately 20.3 acres; 14.7 of these acres were exposed prior to 1981, thereby leaving a net exposed area requiring augmentation of 5.6 acres.

Mining at the Hazeltine Pit is complete. A slurry wall liner has been installed around the pit and the liner leak test was approved by the Division of Water Resources on May 25, 2016. Dewatering of the site has ceased; therefore, post-pumping depletions from past dewatering are being assessed. There is no anticipated groundwater use at this site in 2023. A total of 12,382 acre-feet of groundwater was consumed or pumped for dewatering at the site while it was active; of that amount, a total of 12,018 acre-feet of lagged depletions (or 97% of all lagged depletions) will have accrued to the South Platte River by the end of December 2022. Aggregate proposes to replace all remaining depletions during this CoSSP renewal period; the remaining groundwater depletions (approximately 364 acre-feet) have been distributed uniformly throughout the year. The Orr Drain currently delivers surface water into the lined pit, which is subsequently pumped out to the Bull Seep and discharged to the South Platte River; the monthly difference between what is measured entering the pit and what is measured being pumped out is considered a surface water depletion on which augmentation is required. For the purposes of this CoSSP, it was assumed that similar amounts of surface water inflow would occur this year as occurred last year 90% of that would be pumped out, resulting in annual surface depletions of 25.75 ac-ft. For the 2023 CoSSP, Aggregate will be responsible for replacing all remaining lagged depletions from past dust control, past aggregate production, evaporation from the previously existing exposed groundwater surface, all remaining post-pumping depletions from prior dewatering, and surface water depletions due to Orr Drain inflows that are not pumped out in the same month.

Mining of the Brighton Pit is complete, and reclamation is in progress. Water use at this site in 2023 will consist solely of evaporation from exposed groundwater. Continuous dewatering operations at this pit began in 2006. The rate of dewatering was estimated to be approximately 200 gpm. The SEO approved the liner at the south and central reservoirs of the Brighton Pit on August 19, 2010, and June 9, 2011, respectively. Dewatering at the site ceased in August 2011. Because the dewatered area was lined, there was no post-dewatering fill; however, post-pumping depletions resulting from the cessation of dewatering are included in the total depletions for the site. The total amount of remaining exposed surface area is estimated to be 1.0 acre.

Aggregate intends to actively mine the Tucson South Pit in 2023. Water use at this site in 2023 will consist of evaporation from exposed groundwater, aggregate production, dust control, slurry wall construction, and landscape irrigation. Exposed groundwater is estimated to equal 3 acres. Aggregate estimates that 1,400,000 tons of material will be extracted per year. Dust control, slurry wall, and irrigation use is estimated to equal 3.53 ac-ft per year.

Aggregate Industries has completed mining at the Wattenberg Pit and has entered the reclamation phase. Water use in 2023 will consist of dewatering and evaporation from exposed groundwater. The current exposed area is estimated to equal 37.0 acres. In 2023, Aggregate plans to dewater the mined areas to multiple locations. Some water will be pumped to the Stillwater Ski Lake located south of the pit to mitigate lower levels in the pond due to the suppressed water table resulting from dewatering. Some water may be pumped to a new recharge pond on the west side of the site to mitigate low water table levels at domestic wells in the area. Some water may also be discharged to the Huett Seep, a surface drainage adjacent to the site. The rest of the dewatering discharge will be pumped across the

South Platte River to the Broda Pond located within the Platte Valley Pit; once water enters the Broda Pond, some is pumped to the river to ensure the pond does not spill.

Aggregate intends to import material mined at the Tucson South Pit to the Platte Valley Pit for processing in 2023. Backfilling of portions of the site with inert fill material is ongoing. Water use in 2023 will consist of evaporation from exposed groundwater, aggregate processing, dust control and water pumped for concrete batching. The exposed surface area is estimated at 63.8 acres, and dust control use is estimated to equal 21.00 ac-ft per year. Approximately 1,400,000 tons of material is anticipated to be processed at Platte Valley Pit in 2023 from that is imported from Tucson South. Water for concrete batching will be pumped from a well identified as Permit No. 13410-F-R; 9.30 ac-ft of water use for concrete batching per year is anticipated.

SUMMARY OF REPLACEMENT SOURCES

This section lists the replacement sources included in the CoSSP. The diversion amounts from all the replacement sources will be forwarded on to the Water Commissioner as he/she so desires reporting from this source. The following is a summary of each of the sources included in the CoSSP by sub-basin.

UPPER POUDRE RIVER

<u>Replacement Sources</u>	<u>Projected 2023 Yields</u>	<u>Comment</u>
City of Fort Collins	0	May utilize as a supplemental source
Total	0	

The CoSSP has no active sites in the Upper Poudre River sub-reach, so no replacements are needed. In the past the CoSSP has utilized leases from Tri-Districts and the City of Fort Collins and may do so again in the future should a site in the Upper Poudre River sub-reach become active or a supplemental lease is required.

LOWER POUDRE RIVER

<u>Replacement Sources</u>	<u>Projected 2023 Yields*</u>	<u>Comment</u>
Whitney Ditch	163.84	13.5 shares used
Boyd & Freeman Ditch	0	240 Shares Total
Platte River Power Auth.	0	Annual Lease, if necessary
City of Greeley Lease	0	Annual Lease, if necessary
Star Reservoir Lease	0	Annual Lease, if necessary
Bucklen Pit SWSP	70.97	Annual Lease of excess augmentation credit
Greeley Irrigation Co.	32.96	Rented shares
Total	267.78	

*2023 Projected yields may vary from previous estimates of net yields due to the computed return flow obligations based on the previous year's actual water deliveries.

- Whitney Ditch

Aggregate owns a total of 13.5 shares in the Whitney Ditch Company. These shares were changed in Case No. 90CW23, which determined an annual consumptive use credit of 14.47 ac-ft per share. All 13.5 shares are therefore expected to yield approximately 195 ac-ft of credit in an average year. Use of the shares for augmentation under this CoSSP will conform to the requirements of Case No. 90CW23.

For 2023, Aggregate will dedicate all 13.5 shares to the plan. The expected credit in 2023 for the 13.5 shares has been estimated from a dry-year farm headgate delivery (which includes a 15% ditch loss) of 24.75 ac-ft per share or approximately 334 ac-ft for all 13.5 shares. The total consumptive use credit in 2023 is projected to equal 163.84 ac-ft based on the dry-year delivery projection.

Beginning in 2011, Aggregate has returned its Whitney water to the river via a return structure owned by the Whitney Irrigation Company located in the Southeast $\frac{1}{4}$ of Section 30, Township 6 North, Range 66 West. Aggregate anticipates that this return structure will be utilized again in 2023. Return flow obligations associated with the historical use of the shares will be computed based on actual monthly deliveries using the factors shown in Appendix A.

- Boyd & Freeman Ditch

In the past, Aggregate has utilized 240 shares in the Boyd & Freeman Ditch for augmentation purposes. The 240 shares were first quantified in the SSP for the F-Street Pit submitted to the SEO on October 15, 2002. The 240 shares provide 99.28 ac-ft of consumptive use credit per year based on dry-year yields.

This quantification was based on a parcel-specific analysis using a representative study period and reasonable estimates of crop demand, transportation and application efficiencies, and return flow pattern. A table summarizing the quantification was provided with the 2016 CoSSP renewal application. We request the SEO continue to accept it as the basis for administration of the shares in this plan.

The City of Greeley is the current owner of the shares. Aggregate is currently in discussions with Greeley on the continued use of these shares in the plan. Until approval for their use is given by Greeley, no credit from the Boyd & Freeman Ditch shares will be claimed in this CoSSP.

- City of Greeley

In the past, Aggregate has leased fully consumable effluent from the City of Greeley to provide additional replacement water on the Poudre River. This water is discharged from the City of Greeley's wastewater treatment plant. For 2023, Aggregate may lease water from the City of Greeley as needed to supplement its primary supplies.

- Platte River Power Authority

In the past, the SEO has approved the use of leased water from the Platte River Power Authority (PRPA) for use in Aggregate's CoSSP. For 2023, Aggregate may lease water from the PRPA as needed to supplement its primary supplies.

- Star Reservoir Lease

In the past, the SEO has approved the use of leased water that is stored in Star Reservoir (WDID 0303325). The Star Reservoir is a lined former gravel pit primarily located in the SE $\frac{1}{4}$ of the SW $\frac{1}{4}$ and the SW $\frac{1}{4}$ of the SE $\frac{1}{4}$ of Section 26, Township 6 North, Range 66 West. For 2023, Aggregate may lease water stored in Star Reservoir as needed to supplement its primary supplies.

- Bucklen Pit SWSP

The Bucklen Equipment Company operates a substitute water supply plan (SWSP) for the Bucklen Pit (WDID 0302538) located in Section 36, Township 6 North, Range 66 West and Section 31, Township 6 North, Range 65 West. The 2023 SWSP request for the Bucklen Pit, dated October 12, 2022, notes that this plan is projected to have excess replacement credit during the 2023 irrigation season. Aggregate has executed an agreement to lease the excess replacement credit, which at this time is projected to be at least 70.97 acre-feet during the 2023 irrigation season. A copy of the executed lease is attached in Appendix B.

- Greeley Irrigation Company

Aggregate is seeking to execute a lease of 3 shares in the Greeley Irrigation Company (GIC) in 2023 from Pat Arnold; a copy of the lease agreement will be provided once signed. During the irrigation season, this water is returned to the Poudre River to generate augmentation credit.

The amount of augmentation credit available from these shares will be determined pursuant to the terms & conditions of the Poudre Prairie Decree (Case No. 96CW658), which was based on a ditch-wide analysis. This case decreed a certain methodology to determine surface and subsurface return flow obligations, and that methodology will be adopted by Aggregate in this CoSSP. The specific shares being rented were historically associated with Farms E-73a and E-73B, which are listed on Table A attached to the decree for Case No. 96CW658; this means the farms were actively being irrigated at the time the ditch-wide study was completed. The farms are no longer irrigated, resulting in sufficient dry-up for these shares.

A share of GIC provides the shareholder with two types of water: GIC direct flow water and Fossil Creek Reservoir water. For the purposes of this CoSSP, Aggregate is conservatively assuming that the GIC shares will not yield Fossil Creek Reservoir water in 2023. The decree for Case No. 03CW348 states that the projected deliveries of GIC direct flow water in year one of the projection in that case is 20.31 ac-ft per share. Based on this projected delivery and after accounting for return flow obligations, Aggregate estimates that 3 rented GIC shares will yield 32.96 ac-ft of consumptive use in 2023.

ST. VRAIN RIVER

<u>Replacement Sources</u>	<u>Projected 2023 Yields*</u>	<u>Comment</u>
Smith & Emmons Ditch	0	1.5 Shares total; not used in 2023
Leggett Reservoir	0	19.5 Shares total; not used in 2023
City of Longmont Lease	38.10	Annual Lease, if necessary
Godding, Dailey & Plumb Ditch	0	3 shares total; not used in 2023
Left Hand Ditch Company	0	4 shares total; not used in 2023
Martin Marietta's Heaton Res	0	Annual Lease, if necessary
Zweck & Turner Ditch	0	5/12ths of ditch; not used in 2023
<i>Total</i>	<i>38.10</i>	

*2023 Projected yields may vary from previous estimates of net yields due to the computed return flow obligations based on the previous year's actual water deliveries.

- **Smith & Emmons Ditch**

Aggregate owns 1.5 of 8 total outstanding shares in the Smith & Emmons Ditch Company. The SEO originally approved the use of the shares in the substitute supply plan for the Tull Pit. The consumptive use value of the 1.5 shares was quantified in the letters submitted to the SEO on February 23 and March 28, 2001. The 1.5 shares provide 91.65 ac-ft of consumptive use credit per year based on dry-year yields.

This quantification was based on a parcel-specific analysis using a representative study period and reasonable estimates of crop demand, transportation and application efficiencies, and return flow pattern. A table summarizing the quantification was provided in the 2016 CoSSP renewal application. We request the SEO continue to accept it as the basis for administration of the shares in this plan.

Before claiming use of this source, Aggregate will install a return structure to measure Smith & Emmons Ditch deliveries associated with these shares back to the stream.

- **Leggett-Owens Reservoir**

Donald J. Sherwood historically owned 19.6 shares of the Leggett-Owens Ditch and Reservoir Company, which Aggregate was allowed to use for augmentation pursuant to the mining lease agreement between the two. In January 2011, the City of Longmont completed its acquisition of these shares. During an average year, the 19.6 shares represent 60 ac-ft of water and can be released when needed. The total average annual amount of water for consumptive use available from the 19.6 shares is estimated at 33 ac-ft and was determined by applying an efficiency of 55 percent to the released water. If necessary, Aggregate will coordinate with the City of Longmont for use of this water.

- City of Longmont

In the past, the SEO has approved the use of leased water from the City of Longmont in the substitute supply plans associated with Aggregate's sites on the St. Vrain River. Additionally, pursuant to the Second Amended & Restated Mineral Lease agreement between Aggregate and the City of Longmont for a portion of the Distel Pit, the City of Longmont is obligated to provide up to 20 ac-ft of augmentation water for the Distel Pit. Finally, pursuant to the October 1, 2021, Temporary Mining Water Supply Agreement between Aggregate, Golden Farm, LLLP, and Aggregate, the City of Longmont is obligated to provide up to 375 acre-feet of augmentation water annually and a one-time allotment of 1,260 acre-feet to offset out-of-priority depletions associated with the Irwin-Thomas Pit.

For 2023, Aggregate is seeking to lease a total of 38.10 acre-feet from the City of Longmont for use during the irrigation season. A copy of the lease approval will be provided once executed.

- Godding, Dailey & Plumb Ditch

Aggregate Industries acquired three shares in the Godding, Dailey & Plumb Ditch when it exercised an option and closed on a purchase of land from William L. Distel on September 30, 2004. The consumptive use of this water right was quantified by Applegate Group in an SWSP request for the Distel Pit dated November 14, 2000. That request found that the net annual consumptive use for two Godding, Dailey & Plumb Ditch shares averaged 56.20 ac-ft based on a 10% ditch loss and a 55% farm efficiency; the SEO approved of this consumptive use value in the Distel Pit SWSP approval dated January 10, 2001. Therefore, for the three shares dedicated to this plan, the expected average annual consumptive use yield is 84.30 ac-ft. Credit from this source will not be claimed in the CoSSP until a measuring structure is installed to deliver the shares back to the river. Aggregate will notify and coordinate the releases with the water commissioner if and when it begins to augment with this source.

- Left Hand Ditch Company

Aggregate Industries acquired four shares in the Left Hand Ditch Company from its predecessor, C&M Aggregates; the shares are currently held under Certificate No. 1824. According to the decree for Case No. 87CW127, during the period 1977 to 1988 the average delivery per share was 1.2867 ac-ft per year and the average historic consumptive use per share was 0.6370 ac-ft per year. Based on this decreed historic consumptive use, Aggregate's four shares would be expected to yield approximately 2.55 ac-ft of consumptive use annually. Credit from this source is not being claimed in the CoSSP at this time but may be utilized in the future.

- Martin Marietta's Heaton Reservoir

In the past Aggregate has leased fully consumable water stored in Martin Marietta's Heaton Reservoir (WDID 0504089). The Heaton Reservoir is a lined former gravel pit located in the N ½ of the NE ¼ of Section 9, Township 2 North, Range 68 West. A lease for this water may be executed if necessary.

- Zweck & Turner Ditch

As part of the mining agreement for the Fredstrom Pit, Aggregate may utilize the 5/12ths of the Zweck & Turner Ditch historically associated with the Fredstrom property for augmentation purposes. As determine in a historical consumptive use evaluation provided with the 2020 CoSSP renewal request, these water rights had an average annual consumptive use of 197.4 acre-feet. The dry-year farm headgate delivery of these water rights is estimated to be 691 acre-feet. Aggregate is in the process of developing an augmentation station for the Zweck & Turner Ditch. No credit will be claimed from this source until an approved augmentation station is in place.

PLUM CREEK

- Silver Heights Lease

This replacement source has not been utilized in past SSPs, but Aggregate would like to keep the flexibility to use this source when they may need it.

SOUTH PLATTE MAINSTEM

<u>Replacement Sources</u>	<u>Projected 2023 Yields*</u>	<u>Comment</u>
Centennial	30.00	Available throughout the year
Westminster 1998	265.24	Available throughout the year- perpetual lease
Thornton Effluent	10.53	November - March only
Fulton Ditch	112.00	96 shares total; only 84 shares used
Brighton Ditch	-30.49	Paying delayed return flow obligations
Bergen Reservoirs 4, 5, & 6	0	191 shares total; not used in 2023
Last Chance Ditch Company No. 2	0	0.3154 shares total; not used in 2023
Lupton Bottom Seep Ditches No. 1 and No. 2	0	100% ownership; not used in 2023
Huett Seepage Ditch	0	100% ownership; not used in 2023
Aurora and SACWSD Lease	668.00	Leased water
Total	1,055.28	

*2023 Projected yields may vary from previous estimates of net yields due to the computed return flow obligations based on the previous year's actual water deliveries.

- Centennial Lease

Aggregate conveyed water rights in exchange for a perpetual lease of augmentation in an agreement with Centennial Water and Sanitation District (Centennial) in 1996. The agreement requires Centennial to provide Aggregate 30 ac-ft of fully consumable water each year. The rate of delivery for the 30 ac-ft cannot exceed 0.5 cfs but can be taken at any time throughout the year. Aggregate intends to utilize this source during the months of January and February as shown in the lease confirmation letter attached in Appendix B. Aggregate will not claim credit from Centennial releases on the days that the Burlington Ditch is placing a call and intercepting the water.

- Westminster 1998 Lease

The 1998 Westminster Lease has been used as a replacement source for individual SSPs that have been approved in the past, as well as part of the South Platte Combined Replacement Plan. This is a perpetual lease that provides 0.28 cfs of fully consumable water every day of each year and an additional 0.17 cfs of fully consumable water every day from October 1st to June 30th during each year at the outfall of the Metro Wastewater Treatment Plant. The lease provides 294.79 ac-ft annually, of which 29.55 ac-ft are reserved for augmentation of the Teti Pit and Palazzi Pond in Case No. 07CW198. The remaining 265.24 ac-ft will continue to be used in this renewal of the CoSSP. A copy of the lease document has been previously provided to the Division of Water Resources (DWR).

- City of Thornton Lease

In exchange for three shares in the Colorado Agricultural Ditch Company, the City of Thornton has provided Aggregate a perpetual lease of fully consumable water from the Metro Wastewater Treatment Plant to be delivered at a rate of 0.035 cfs daily from November 1st through March 31st. This totals 10.53 ac-ft for the calendar year, which will continue to be used in this renewal of the CoSSP. A copy of the water lease document has been previously provided to the DWR.

- Fulton Ditch

Aggregate owns 96 shares in the Fulton Ditch Company. These shares were acquired by Aggregate or its predecessors in four distinct blocks, as outlined below:

# of Shares	Prior Owner	Prior Certificate No.	Current Certificate No.
62	Cooley Gravel	3113	3653
22	CAMAS	3535	
6	C&M Aggregates	3188	
6	Hill & Peterson	2725	3805

For 2023, the 6 C&M Aggregates shares and the 6 Hill & Peterson shares will be leased to others for irrigation purposes. Aggregate intends to utilize the remaining 62 Cooley Gravel shares and 22 CAMAS shares for augmentation purposes in 2023. An updated consumptive use analysis has been conducted on the 62 Cooley Gravel shares and was updated in 2021 with a 50% application efficiency; this analysis determined an average annual consumptive use of 1.50 acre-feet per share and provided return flow factors for administration. A consumptive use analysis was recently conducted on the 22 CAMAS shares and is attached in Appendix C; this analysis also determined an average annual consumptive use of 1.50 acre-feet per share. For ease of administration, Aggregate proposes to administer the additional 22 CAMAS shares using the same return flow factors as was previously determined for the Cooley Gravel shares.

Starting in 2010, Aggregate arranged to have its pro-rata ownership delivered through the augmentation station owned by the South Adams Water & Sanitation District and located just downstream of the ditch headgate. Aggregate anticipates that the 84 shares will be delivered to this augmentation station for 2023. Return flow obligations associated with the historic use of the shares will be computed based on actual monthly deliveries.

The expected credit in 2023 for the 84 shares has been estimated from a dry-year farm headgate delivery of 2.66 ac-ft per share or approximately 222 ac-ft for all 84 shares. After accounting for return flow obligations, the total consumptive use credit in 2023 is projected to equal 112.00 ac-ft.

- Brighton Ditch

Aggregate has in the past leased 1.038 shares in the Brighton Ditch Company from the City of Westminster. These shares were changed to allow additional uses (including augmentation) in Case No. 16CW3186. Pursuant to Paragraph 7, Aggregate's use of the shares shall be governed by the terms and conditions of that decree, including the decreed return flow factors and volumetric limits. The lease with Westminster has ended; this year Aggregate will not receive credit from this source but will pay delayed return flow obligations from past water use.

- Bergen Reservoirs 4, 5, and 6

Aggregate Industries acquired shares in the Bergen Ditch and Reservoir Company from its predecessor, Cooley Gravel Company. Aggregate's current ownership is estimated to be 191 shares out of the 403.5 shares in the company, which gives Aggregate an interest in the storage rights of the Bergen Reservoirs 4, 5, and 6. An appraisal performed by KKBNA, Inc. consulting engineers in December 1986 concluded that the average annual volume of water available under these storage rights was 132 ac-ft and, after accounting for transit losses, the net annual yield was determined to be 85 ac-ft. Beginning around 1988, the Bergen Reservoir water rights were identified as a replacement source in substitute water supply plans (SWSP).¹ Specifically, the water rights have been identified as a replacement source in the Thornton Pit and East Thornton Pit SWSP. This source continued to be used through at least 1994. The amount of water quantified for use in the Thornton Pit and East Thornton Pit SWSP was 15.8 ac-ft, corresponding to the estimated average annual consumptive use for the water rights. Credit from this source is not being claimed in the CoSSP at this time but may be utilized in the future.

- Last Chance Ditch Company No. 2

Aggregate Industries acquired 0.3154 shares in the Last Chance Ditch Company No. 2 from its predecessor, Cooley Gravel Company; the shares are currently held under Certificate Nos. 248 and 251. A ditch-wide analysis of the Last Chance Ditch system was performed by W.W. Wheeler and Associates (Wheeler) and summarized in a letter report dated April 16, 1990.

¹ William Warmack (Applegate Group, Inc.), letter to Timothy Flanagan (Fowler Schimberg & Flanagan, P.C.) Re: Bergen Reservoirs 4, 5, and 6, dated September 4, 2001.

In that report, Wheeler concluded that each share had an average consumptive use value of 9.62 ac-ft per year and a dry-year yield of 10.97 ac-ft per year; the dry-year yield was higher than the average due to the higher consumptive use demand during a dry-year and the relative seniority of the water rights. Using the average year consumptive use estimate, Aggregate's 0.3154 shares would be expected to yield approximately 3.03 ac-ft of consumptive use annually. Credit from this source is not being claimed in the CoSSP at this time but may be utilized in the future.

- Lupton Bottom Seep Ditches No. 1 and No. 2

Aggregate Industries acquired 100% ownership of the Lupton Bottom Seep Ditches No. 1 and No. 2 in a special warranty deed dated June 28, 2011, between the Lupton Bottom Ditch Company and Aggregate. These two water rights were decreed in Case No. 97CW296 for 5 cfs each to be used for irrigation purposes. The sources for the ditches are seep and waste waters. To our knowledge a historical consumptive use analysis has not been performed on these water rights. Credit from this source is not being claimed in the CoSSP at this time but may be utilized in the future.

- Huett Seepage Ditch

As indicated in a special warranty deed with the City of Westminster dated December 21, 1999, Aggregate Industries' predecessor CAMAS Colorado, Inc. retained 100% ownership of the Huett Seepage Ditch when land through which the ditch runs at the Wattenberg Pit site was sold to Westminster. This water right was decreed in Case No. W-7336 for 2.5 cfs to be used for domestic and irrigation purposes. The source of the water is the South Platte River. To our knowledge a historical consumptive use analysis has not been performed on this water right. Credit from this source is not being claimed in the CoSSP at this time but may be utilized in the future.

- South Adams County Water and Sanitation District

Aggregate is seeking to execute an agreement with South Adams County Water and Sanitation District (SACWSD) for fully consumable augmentation water delivered to the South Platte River. The source of this water will be any fully consumable water available to SACWSD, including consumptive use credit generated from water rights changed by the decrees in Case Nos. 01CW258 and 10CW304. For 2023, Aggregate anticipates leasing a total of 653 acre-feet of fully consumable water between the City of Aurora and SACWSD. A copy of the lease confirmation will be provided once it is complete.

- City of Aurora

Aggregate executed an agreement with the City of Aurora for reusable raw water on January 10, 2022 through which Aggregate can lease fully consumable augmentation water for use in this CoSSP. The source of this water will be any fully consumable water available to the City of Aurora. Releases of this water will be made from the Metro Waste Reclamation Facility. For 2023, Aggregate anticipates leasing a total of 653 acre-feet of fully consumable water between the City of Aurora and SACWSD. A copy of the lease confirmation will be provided once it is complete.

OPERATION OF THE PLAN

Appendix A of this report outlines the monthly operation of the CoSSP. The tables display the projected depletions from each site using the anticipated consumptive use over the requested plan period, as well as previous years' on-site consumptive use. The tables also display the replacements for the ditch rights and leases described in the previous section.

The projections in Appendix A are based on anticipated operations; actual operations may vary from these projections. Supplemental leases will be obtained in the event there are insufficient replacements being made to offset actual operations. Aggregate requests that the DWR allow supplemental leases to be obtained from any authorized augmentation source, including excess replacement credit contained in other gravel pit SWSPs approved pursuant to C.R.S. §37-90-137(11), that is capable of making replacements to the most upstream calling right impacted by Aggregate's depletions. Additionally, Aggregate requests that the DWR allow it to lease out any of its excess replacement credit to other gravel pit SWSPs approved pursuant to C.R.S. §37-90-137(11) or temporary SWSPs approved pursuant to C.R.S. §37-92-308(5), to the extent such excess replacement credit exists.

DEWATERING OPERATIONS

Following is a list of each of the sites that has been or is currently being dewatered; Appendix A explicitly tracks dewatering discharges and corresponding lagged depletions from pumping.

- Hazeltine Pit- has ceased dewatering
- Brighton Pit- has ceased dewatering
- Platte Valley Pit- has ceased dewatering
- F-Street Pit – has ceased dewatering
- Distel Pit – has ceased dewatering
- WW Farms Pit- actively dewatering
- Wattenberg Pit – actively dewatering
- Tull Pit – actively dewatering
- Tucson South Pit – actively dewatering
- Irwin-Thomas Pit – dewatering anticipated to begin in 2023
- Fredstrom Pit – dewatering has not yet begun

All sites that are currently dewatering have been equipped with totalizing flow meters to measure the dewatering discharge. For sites that are actively dewatering, Aggregate requests that they be allowed to rely on the assumption that the dewatering discharge returning to the stream system is adequate to offset the depletions caused by dewatering. Post-dewatering depletions will be assessed when dewatering ceases. Aggregate anticipates that all the sites that are currently being dewatered will dewater continuously throughout 2023.

LONG-TERM AUGMENTATION RESPONSIBILITIES

In an April 30, 2010, letter regarding mining operations that exposed groundwater, the Division of Reclamation, Mining, and Safety (DRMS) required all sand and gravel mining operators to identify one of four approaches that would be taken to mitigate long-term injurious stream depletions from exposed groundwater. Aggregate responded to the DRMS for various sites via letters dated April 22, 2011. For some sites, Aggregate has bonded to backfill or line the site in accordance with DRMS Approach Nos. 1 and 3. For other sites, Aggregate is actively seeking a decreed plan for augmentation in accordance with DRMS Approach No. 2. For the remaining sites, Aggregate has previously provided a Water Right Dedication affidavit (dated January 25, 2011) to meet the requirements of DRMS Approach No. 4. In some cases, a combination of the various approaches is being taken. The following table outlines Aggregate's approach for each of the sites included in the CoSSP.

Site Name	DRMS Permit #	Final Reclamation	Current Bond Amount	DRMS Approach No.	Comments
W.W. Farms Pit	M-99-098	Reservoir/Lakes	\$270,000	2	Augmentation plan approved under Case No. 1990CW23
F-Street Pit	M-92-069	Open Lake	\$10,237,994	1 or 3	Aggregate has posted a bond to backfill the site.
Distel Pit	M-89-029	Open Lake	\$1,216,716	1, 2	Aggregate has posted a bond to backfill the site. Additionally, Longmont obtained an augmentation plan under Case No. 2009CW271 to replace evaporative losses at the site
Tull Pit	M-94-027	Reservoir	\$2,947,600	3	Aggregate has posted a bond to line the site.
Irwin-Thomas Pit	M-16-054	TBD	\$2,747,911	3	Aggregate has posted a bond to line the site.
Fredstrom Pit	M-01-016	TBD	\$1,000	4	Water rights have been dedicated to the site via a Water Right Dedication Affidavit dated April 23, 2019
Jeronimus Pit	M-99-034	Backfilled	\$1,510,800	1, 4	Aggregate is in the process of backfilling the remaining exposed groundwater that does not qualify as pre-1981. Additionally, Aggregate has dedicated water rights via a Water Right Dedication affidavit dated January 25, 2011
Hazeltine Pit	M-04-031	Reservoir	\$670,602	3	Aggregate has posted a bond to line the site. The liner was approved by the DWR May 25, 2016. The bond remains in place to address other reclamation activities.
Brighton Pit	M-77-436	Reservoir/Lakes	\$150,000	1, 3	Aggregate has posted a bond to line the site. With approvals by DWR of the liners, a bond reduction was approved by the DRMS
Tucson South Pit	M-04-044	Reservoir	\$3,505,000	3	Aggregate has posted a bond to backfill the existing 3-acre pond and line the remainder of the site.
Wattenberg Pit	M-04-051	Reservoirs	\$520,000	3	Aggregate has posted a bond to line the site. The pit was lined in 2013 and the liner approved by the DWR December 18, 2019.
Platte Valley Pit	M-89-120	Open Lake	\$754,732	1, 4	Aggregate has posted a bond to backfill the site. Additionally, Aggregate has dedicated water rights via a Water Right Dedication affidavit dated January 25, 2011

SUMMARY

This combined substitute supply plan incorporates the pre-existing substitute supply plans for 12 sites operated by Aggregate Industries and provides for projected operations in calendar year 2023. Total consumptive use from all 12 sites in 2023 are estimated to equal 736 ac-ft, with resulting stream depletions equal to 1,102 ac-ft. Based on dry-year yields, the total available replacement water contained in the plan is approximately 1,361 ac-ft.

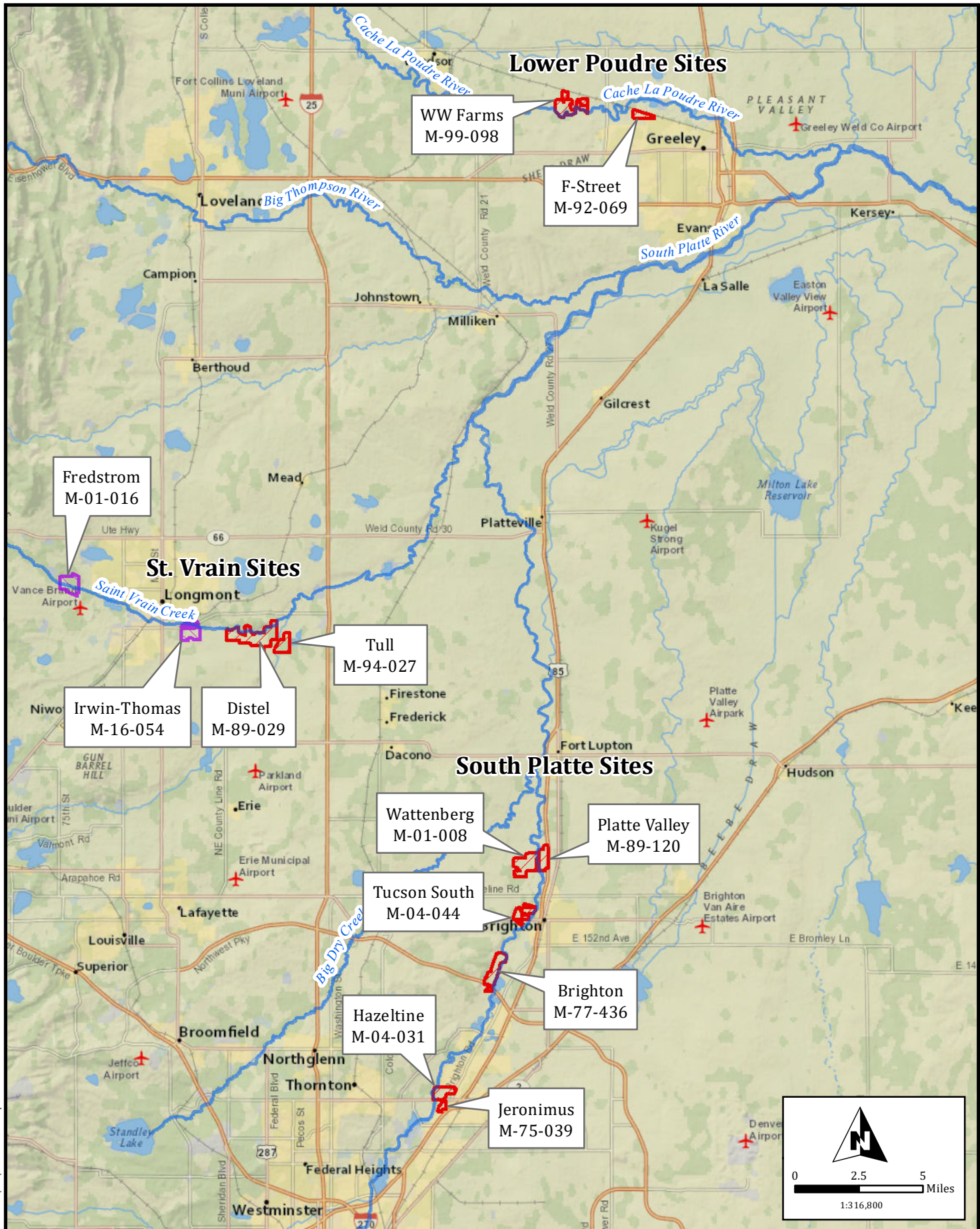
The SEO has either already issued a well permit or a well permit is pending for each of the 12 sites as shown in the following table. If water use at any site exceeds the current permit limits we will apply for a new permit. At this time, we assess that all sites are operating within their permitted limitations.

Aggregate Site Summaries for 2023

	Site Name	DRMS Permit #	Mining Status	Well permit No.	New Well Permit Needed?	Net Exposed Surface Area (Acres)	Evaporative Losses (af)	Production (tons)	Water Lost in Product (af)	Dust Cntrl / Other (af)	Concrete Batching (af)	Total CU (af)
Upper Poudre	None	-	-	-	-	-	-	-	-	-	-	-
Lower Poudre	W.W. Farms Pit	M-99-098	Mining	76207-F	No	64.0	178.6	592,000	17.4	1.0	8.1	205.1
	F-Street Pit	M-92-069	Reclam	67989-F	No	26.2	71.8	0	0.0	0.0	n/a	71.8
	Lower Poudre Subtotal					90.2	250.4	592,000	17.4	1.0	8.1	276.9
St Vrain	Distel Pit	M-89-029	Reclam	67433-F 76960-F	No	0.0	0.0	0	0.0	1.5	n/a	1.5
	Tull Pit	M-94-027	Mining	74831-F	No	4.0	10.3	684,000	20.1	1.0	n/a	31.4
	Irwin-Thomas Pit	M-16-054	Mining	82900-F	No	1.0	2.6	500,000	14.7	30.0	n/a	47.3
	Fredstrom Pit	M-01-016	Inactive	86019-F	No	0.0	0.0	0	0.0	0.0	n/a	0.0
	St Vrain Subtotal					5.0	12.9	1,184,000	34.8	32.5	0.0	80.3
South Platte	Jeronimus Pit	M-99-034	Reclam	63281-F	No	5.6	15.0	0	0.0	0.0	n/a	15.0
	Hazeltine Pit	M-04-031	Reclam	63224-F	No	0.0	0.0	0	0.0	0.0	n/a	0.0
	Brighton Pit	M-77-436	Reclam	56993-F	No	1.0	2.7	0	0.0	0.0	n/a	2.7
	Tucson South Pit	M-04-044	Mining	81342-F	No	3.0	8.2	1,400,000	20.6	3.5	n/a	32.3
	Wattenberg Pit	M-04-051	Reclam	78627-F	No	37.0	108.4	0	0	0.0	n/a	108.4
	Platte Valley Pit	M-89-120	Active	13410-F-R 78626-F	No	63.8	169.2	0	20.6	21.0	9.3	220.1
	South Platte Subtotal					110.4	303.5	1,400,000	41.2	24.5	9.3	378.5
	2023 TOTALS					205.6	566.8	3,176,000	93.4	58.0	17.4	735.6

The following table shows the projected net water balance on the St. Vrain, Poudre, and South Platte Rivers (see Appendix A for a detailed water balance). As shown, more than enough replacement water is available to offset the depletions that are expected to occur from Aggregate's mining operations in 2023.

Basin Summary (ac-ft)													
Location	Jan-23	Feb-23	Mar-23	Apr-23	May-23	Jun-23	Jul-23	Aug-23	Sep-23	Oct-23	Nov-23	Dec-23	Total
St. Vrain at Confluence	-3.08	-5.24	-6.09	0.05	0.03	0.05	0.04	0.09	0.04	0.04	-4.72	-4.66	-23.46
Upper Poudre	0.00	0.00	0.00	0.00	0.00	0.00	0.00	0.00	0.00	0.00	0.00	0.00	0.00
Poudre At Confluence	-16.20	-15.89	-16.91	-8.14	18.54	24.65	36.23	25.67	7.81	-20.33	-25.54	-20.13	-10.22
South Platte River	-	-	-	-	-	-	-	-	-	-	-	-	-
Above St. Vrain Confluence	22.23	24.11	26.10	10.44	3.62	4.23	4.57	4.90	1.42	24.09	34.51	28.03	188.23
Below St. Vrain Confluence	19.15	18.86	20.00	10.49	3.65	4.28	4.61	4.98	1.46	24.13	29.79	23.36	164.76
Above Poudre Confluence	17.25	16.99	18.02	9.45	3.29	3.86	4.15	4.49	1.31	21.73	26.83	21.04	148.41
Net Balance	1.05	1.10	1.11	1.31	21.83	28.51	40.39	30.16	9.12	1.41	1.29	0.92	138.19



**Applegate
Group, Inc.**

Water Resource Advisors for the West
1490 West 121st Ave., Ste 100 Phone: (303) 452-6611
Denver, CO 80234-2728 Fax: (303) 452-2759
www.ApplegateGroup.com e-mail: info@applegategroup.com

AGGREGATE INDUSTRIES COMBINED SSP Vicinity Map

Date: 30 Dec 2019

Job #: 06-103

Drawn By: JMD

Figure:

1

Of:

1

Appendix A

Aggregate Industries Water Accounting

- Combined Water Accounting Summary
- Individual River Basin Replacement Summaries
- Individual Pit Consumptive Use/ Depletions Summaries

Aggregate Industries - WCR, Inc.
 South Platte Combined Substitute Supply Plan Accounting
 2023

TOTAL ON-SITE CONSUMPTIVE USE (ac-ft)

	Site	Jan-23	Feb-23	Mar-23	Apr-23	May-23	Jun-23	Jul-23	Aug-23	Sep-23	Oct-23	Nov-23	Dec-23	Total	Comments
District 2	Jeronimus Pit (WDID 0203029)	0.47	0.56	0.74	1.14	1.60	2.28	2.37	2.16	1.64	1.09	0.51	0.44	15.00	
	Hazeltine Pit (WDID 0203030)	0.00	0.00	0.00	0.00	0.00	0.00	0.00	0.00	0.00	0.00	0.00	0.00	0.00	
	Brighton Pit (WDID 0203031)	0.08	0.10	0.12	0.23	0.28	0.41	0.45	0.39	0.30	0.20	0.09	0.08	2.73	
	Tucson South Pit (WDID 0203032)	1.55	1.54	2.23	2.69	2.75	3.32	3.28	3.56	3.04	2.84	1.45	4.08	32.34	
	Wattenberg Pit (WDID 0203034)	3.15	4.04	5.03	8.88	11.84	16.50	17.33	15.26	11.53	7.86	3.73	3.24	108.38	
	Platte Valley Pit (WDID 0203035)	6.81	7.90	10.36	19.10	22.94	31.58	33.92	29.99	23.77	17.14	7.45	9.09	220.05	
District 5/6	Distel Pit (WDID 0503000)	0.03	0.05	0.08	0.08	0.15	0.23	0.23	0.23	0.23	0.15	0.05	0.03	1.54	
	Tull Pit (WDID 0603001)	1.44	1.76	2.88	3.02	3.10	3.17	3.46	3.75	3.13	2.61	1.55	1.56	31.44	
	Irwin-Thomas Pit (WDID 0505626)	10.52	11.41	2.45	2.52	2.57	2.70	2.76	2.70	2.58	2.50	2.42	2.11	47.29	
	Fredstrom Pit (WDID 0505629)	0.00	0.00	0.00	0.00	0.00	0.00	0.00	0.00	0.00	0.00	0.00	0.00	0.00	
Dist 3	W.W. Farms Pit (WDID 0303014)	6.29	8.23	10.99	17.26	21.31	28.90	31.45	29.29	21.16	15.45	8.37	6.39	205.07	
	F-Street Pit (WDID 0303015)	2.10	2.62	3.41	5.76	7.34	10.74	11.79	11.00	7.60	4.98	2.36	2.10	71.79	

Total Consumptive Uses	Jan-23	Feb-23	Mar-23	Apr-23	May-23	Jun-23	Jul-23	Aug-23	Sep-23	Oct-23	Nov-23	Dec-23	Total
District 2	12.06	14.14	18.48	32.04	39.41	54.09	57.35	51.37	40.28	29.14	13.23	16.92	378.50
Districts 5/6	12.00	13.23	5.42	5.62	5.82	6.10	6.46	6.69	5.94	5.26	4.03	3.70	80.27
District 3	8.39	10.85	14.40	23.02	28.65	39.64	43.24	40.29	28.76	20.43	10.72	8.49	276.86
Total	32.44	38.22	38.29	60.69	73.88	99.83	107.05	98.34	74.98	54.83	27.98	29.11	735.63

Stream Depletions (ac-ft) (+) accretions / (-) depletions

	Site	Jan-23	Feb-23	Mar-23	Apr-23	May-23	Jun-23	Jul-23	Aug-23	Sep-23	Oct-23	Nov-23	Dec-23	Total	Comments
District 2	Jeronimus Pit (WDID 0203029)	-0.87	-0.84	-0.87	-1.00	-1.22	-1.54	-1.82	-1.90	-1.79	-1.54	-1.22	-0.98	-15.57	
	Hazeltine Pit (WDID 0203030)	-34.48	-34.54	-34.47	-31.90	-32.58	-32.32	-31.98	-32.10	-31.88	-31.09	-31.36	-31.36	-390.05	
	Brighton Pit (WDID 0203031)	-0.48	-0.48	-0.49	-0.55	-0.60	-0.68	-0.73	-0.73	-0.67	-0.60	-0.52	-0.48	-7.01	
	Tucson South Pit (WDID 0203032)	-2.31	-1.84	-1.85	-2.07	-2.26	-2.47	-2.68	-2.84	-2.90	-2.83	-2.54	-2.64	-29.25	
	Wattenberg Pit (WDID 0203034)	-5.51	-5.39	-5.66	-6.97	-8.89	-11.41	-13.35	-13.60	-12.38	-10.39	-7.96	-6.30	-107.81	
	Platte Valley Pit (WDID 0203035)	-11.08	-10.59	-11.29	-14.88	-18.58	-23.37	-27.15	-27.36	-24.84	-20.99	-15.44	-12.89	-218.47	
District 5/6	Distel Pit (WDID 0503000)	-0.06	-0.06	-0.08	-0.09	-0.12	-0.17	-0.19	-0.20	-0.21	-0.17	-0.11	-0.08	-1.54	
	Tull Pit (WDID 0603001)	-2.29	-2.25	-2.21	-2.19	-2.19	-2.21	-2.24	-2.28	-2.33	-2.38	-2.41	-2.42	-27.39	
	Irwin-Thomas Pit (WDID 0505626)	-0.73	-2.93	-3.80	-2.92	-2.46	-2.28	-2.23	-2.23	-2.23	-2.21	-2.20	-2.17	-28.40	
	Fredstrom Pit (WDID 0505629)	0.00	0.00	0.00	0.00	0.00	0.00	0.00	0.00	0.00	0.00	0.00	0.00	0.00	
Dist 3	W.W. Farms Pit (WDID 0303014)	-8.83	-9.33	-10.89	-14.59	-18.18	-23.30	-26.80	-27.01	-22.98	-18.42	-13.22	-10.11	-203.65	
	F-Street Pit (WDID 0303015)	-4.85	-4.31	-4.05	-4.19	-4.80	-5.78	-7.12	-8.12	-8.37	-7.78	-6.76	-5.65	-71.79	

Total Stream Depletions	Jan-23	Feb-23	Mar-23	Apr-23	May-23	Jun-23	Jul-23	Aug-23	Sep-23	Oct-23	Nov-23	Dec-23	Total
District 2	-54.73	-53.68	-54.64	-57.36	-64.13	-71.79	-77.71	-78.53	-74.47	-67.45	-59.03	-54.65	-768.16
Districts 5/6	-3.08	-5.24	-6.09	-5.19	-4.77	-4.66	-4.67	-4.71	-4.76	-4.76	-4.72	-4.66	-57.33
District 3	-13.68	-13.64	-14.94	-18.78	-22.98	-29.08	-33.92	-35.13	-31.35	-26.19	-19.99	-15.76	-275.44
Total	-71.49	-72.57	-75.67	-81.34	-91.88	-105.53	-116.29	-118.37	-110.58	-98.41	-83.74	-75.07	-1100.94

Aggregate Industries - WCR, Inc.
South Platte Combined Substitute Supply Plan Accounting
2023

REPLACEMENT SOURCES (ac-ft)

	Source	Jan-23	Feb-23	Mar-23	Apr-23	May-23	Jun-23	Jul-23	Aug-23	Sep-23	Oct-23	Nov-23	Dec-23	Total	Comments
District 2	Silver Heights													0.00	
	Last Chance Ditch No. 2													0.00	
	Centennial	14.00	16.00	0.00	0.00	0.00	0.00	0.00	0.00	0.00	0.00	0.00	0.00	30.00	
	Westminster 1998	26.42	23.74	26.25	24.77	25.02	23.15	13.17	13.24	13.22	25.00	24.96	26.28	265.24	294.79 of total; 29.55 of reserved for 07CW198
	Thornton Effluent	2.15	2.01	2.15	0.00	0.00	0.00	0.00	0.00	0.00	0.00	2.08	2.15	10.53	
	Fulton Ditch	0.00	0.00	0.00	12.47	40.71	41.22	33.71	36.86	27.86	29.33	0.00	0.00	222.16	
	Old Brantner Ditch													0.00	Removed from Plan
	Brighton Ditch													0.00	Removed from Plan
District 5/6	Westminster / Aurora / SACWSD	52.00	53.00	68.00	45.00	22.00	33.00	57.00	57.00	56.00	64.00	88.00	73.00	668.00	
	New Brantner Ditch													0.00	Removed from Plan
	Leggett Reservoir	0.00	0.00	0.00	0.00	0.00	0.00	0.00	0.00	0.00	0.00	0.00	0.00	0.00	
	Smith & Emmons Ditch	0.00	0.00	0.00	0.00	0.00	0.00	0.00	0.00	0.00	0.00	0.00	0.00	0.00	
	Hall N&S Ditches													0.00	
	South Flat Ditch													0.00	
	Mason Meadows Ditch													0.00	
	Longmont WWTP	0.00	0.00	0.00	5.90	5.40	5.30	5.30	5.40	5.40	5.40	0.00	0.00	38.10	Lease from City of Longmont
District 3	Heaton Reservoir (Martin Marietta)	0.00	0.00	0.00	0.00	0.00	0.00	0.00	0.00	0.00	0.00	0.00	0.00	0.00	Lease from Martin Marietta
	Coffin & Davis Ditch													0.00	Removed from Plan
	Rural Ditch													0.00	Removed from Plan
	Bonus Ditch													0.00	
	P & D Ditch													0.00	
	C-BT													0.00	Removed from Plan
	Little Cache													0.00	Removed from Plan
	Lindenmeier	0.00	0.00	0.00	0.00	0.00	0.00	0.00	0.00	0.00	0.00	0.00	0.00	0.00	
District 3	Fort Collins / PRPA	0.00	0.00	0.00	0.00	0.00	0.00	0.00	0.00	0.00	0.00	0.00	0.00	0.00	
	Whitney Ditch	0.00	0.00	0.00	9.44	48.90	62.42	85.39	75.81	49.82	2.29	0.00	0.00	334.07	13.5 shares used
	Boyd & Freeman Ditch													0.00	Removed from Plan
	Star Reservoir	0.00	0.00	0.00	0.00	0.00	0.00	0.00	0.00	0.00	0.00	0.00	0.00	0.00	Lease from L.G. Everist
	City of Greeley / Bucklen Pit	0.00	0.00	0.00	5.12	12.89	11.61	12.08	12.09	10.37	6.80	0.00	0.00	70.97	Lease from Bucklen Pit SWSP
	GIC	0.00	0.00	0.00	5.07	10.14	9.87	9.99	9.24	9.27	7.35	0.00	0.00	60.93	Leased shares

Return Flow Obligations (ac-ft)

	Source	Jan-23	Feb-23	Mar-23	Apr-23	May-23	Jun-23	Jul-23	Aug-23	Sep-23	Oct-23	Nov-23	Dec-23	Total	Comments
District 2	Fulton Ditch	-4.93	-4.26	-4.43	-7.21	-14.39	-14.18	-12.64	-13.80	-11.69	-12.47	-5.03	-5.13	-110.16	
	Old Brantner Ditch													0.00	Removed from Plan
	Brighton Ditch	-2.18	-1.72	-1.33	-1.09	-1.33	-1.95	-2.73	-3.51	-4.06	-4.06	-3.67	-2.89	-30.49	
	New Brantner Ditch													0.00	Removed from Plan
Dist. 3	Whitney Ditch	-1.51	-1.29	-1.07	-6.95	-26.69	-26.09	-32.67	-32.18	-26.66	-7.54	-4.34	-3.22	-170.23	
	Boyd & Freeman Ditch													0.00	Removed from Plan
	GIC	-1.01	-0.95	-0.90	-2.04	-3.41	-3.52	-3.66	-3.54	-3.54	-3.03	-1.21	-1.15	-27.97	
Dist.5/6	Smith & Emmons Ditch	0.00	0.00	0.00	0.00	0.00	0.00	0.00	0.00	0.00	0.00	0.00	0.00	0.00	

Transit Loss Summary (ac-ft)

	Jan-23	Feb-23	Mar-23	Apr-23	May-23	Jun-23	Jul-23	Aug-23	Sep-23	Oct-23	Nov-23	Dec-23	Total	Comments
St. Vrain at Confluence	0.00	0.00	0.00	-0.65	-0.60	-0.59	-0.59	-0.60	-0.60	-0.60	0.00	0.00	-4.23	
Poudre At Confluence	0.00	0.00	0.00	0.00	-0.30	-0.56	-0.98	-0.62	-0.09	0.00	0.00	0.00	-2.56	
South Platte To St. Vrain River	-10.50	-10.99	-9.91	-6.14	-4.28	-5.23	-6.23	-6.37	-5.46	-10.27	-12.80	-10.73	-98.89	
St. Vrain To Poudre River	-1.90	-1.87	-1.99	-1.04	-0.36	-0.43	-0.46	-0.49	-0.14	-2.39	-2.96	-2.32	-16.35	

Basin Summary (ac-ft)

	Location	Jan-23	Feb-23	Mar-23	Apr-23	May-23	Jun-23	Jul-23	Aug-23	Sep-23	Oct-23	Nov-23	Dec-23	Total	Comments
	St. Vrain at Confluence	-3.08	-5.24	-6.09	0.05	0.03	0.05	0.04	0.09	0.04	0.04	-4.72	-4.66	-23.46	Net deficits allowed during non-irrigation season
	Upper Poudre	0.00	0.00	0.00	0.00	0.00	0.00	0.00	0.00	0.00	0.00	0.00	0.00	0.00	No net deficits allowed in any month
	Poudre At Confluence	-16.20	-15.89	-16.91	-8.14	18.54	24.65	36.23	25.67	7.81	-20.33	-25.54	-20.13	-10.22	Net deficits allowed during non-irrigation season
	South Platte River	-	-	-	-	-	-	-	-	-	-	-	-	-	
	Above St. Vrain Confluence	22.23	24.11	26.10	10.44	3.62	4.23	4.57	4.90	1.42	24.09	34.51	28.03	188.23	Net deficits allowed during non-irrigation season
	Below St. Vrain Confluence	19.15	18.86	20.00	10.49	3.65	4.28	4.61	4.98	1.46	24.13	29.79	23.36	164.76	Net deficits allowed during non-irrigation season
	Above Poudre Confluence	17.25	16.99	18.02	9.45	3.29	3.86	4.15	4.49	1.31	21.73	26.83	21.04	148.41	Net deficits allowed during non-irrigation season
	Net Balance	1.05	1.10	1.11	1.31	21.83	28.51	40.39	30.16	9.12	1.41	1.29	0.92	138.19	

Aggregate Industries - WCR, Inc.
Summary of Replacement Sources
South Platte Mainstem

						0.371 shares				0.667 shares							
(all values in ac-ft)						Fulton Ditch Dry-year delivery = 336.13				Brighton Ditch - Haake Farm Haake Farm 2003 delivery = 44.16				Brighton Ditch - Wattenberg Farm Wattenberg Farm 2003 delivery = 79.35			
	Month	1998 Westminster Lease	Westminster / Aurora / SACWSD Lease	Thornton Effluent	Centennial	Deliveries	Surface RF Factors	Subsurface RF Factors	RF Obligations	Deliveries	Haake Farm Surface RF Factors	Haake Farm Subsurface RF Factors	Haake Farm RF Obligations	Deliveries	Wattenberg Farm RF Factors	Wattenberg Farm Surface Subsurface RF Factors	Wattenberg Farm RF Obligations
2021	Jan-21	26.42	27.00	2.15	5.00	0.00	0.00%	-2.31%	-2.31	0.00	0.00%	-2.800%	-1.80	0.00	0.00%	-2.80%	-3.23
	Feb-21	23.74	29.00	2.01		0.00	0.00%	-2.00%	-2.00	0.00	0.00%	-2.200%	-1.41	0.00	0.00%	-2.20%	-2.54
	Mar-21	26.25	29.00	2.15		0.00	-24.99%	-2.08%	-2.08	0.00	0.00%	-1.700%	-1.09	0.00	0.00%	-1.70%	-1.96
	Apr-21	24.77		0.00		6.00	-25.26%	-1.91%	-3.42	7.81	-23.30%	-1.400%	-2.72	14.05	-23.30%	-1.40%	-4.89
	May-21	25.02		0.00		0.87	-25.48%	-1.88%	-2.10	0.70	-21.00%	-1.700%	-1.24	1.25	-21.00%	-1.70%	-2.23
	Jun-21	23.15		0.00		7.00	-25.10%	-1.80%	-3.55	4.93	-18.50%	-2.500%	-2.52	8.86	-18.50%	-2.50%	-4.53
	Jul-21	13.17		0.00	25.00	22.00	-25.32%	-1.93%	-7.50	16.82	-18.60%	-3.500%	-5.38	30.25	-18.60%	-3.50%	-9.67
	Aug-21	13.24		0.00		25.00	-25.42%	-2.08%	-8.43	17.46	-18.90%	-4.500%	-6.19	31.39	-18.90%	-4.50%	-11.13
	Sep-21	13.22		0.00		21.00	-25.33%	-2.17%	-7.49	17.53	-18.60%	-5.200%	-6.60	31.51	-18.60%	-5.20%	-11.86
	Oct-21	25.00		0.00		16.84	-25.21%	-2.38%	-6.62	9.93	-20.10%	-5.200%	-5.33	17.85	-20.10%	-5.20%	-9.59
	Nov-21	24.96	58.00	2.08		0.00	-25.01%	-2.36%	-2.36	0.00	0.00%	-4.700%	-3.02	0.00	0.00%	-4.70%	-5.43
	Dec-21	26.28	41.00	2.15		0.00	-24.79%	-2.41%	-2.41	0.00	0.00%	-3.700%	-2.38	0.00	0.00%	-3.70%	-4.27
Totals		265.24	184	10.53	30.00	98.71			-50.26	75.18			-39.67	135.15			-71.32
2022	Jan-22	26.42	38.00	2.15		0.00	0.00%	-2.31%	-2.28	0.00	0.00%	-2.800%	-2.10	0.00	0.00%	-2.80%	-3.78
	Feb-22	23.74	36.00	2.01		0.00	0.00%	-2.00%	-1.97	0.00	0.00%	-2.200%	-1.65	0.00	0.00%	-2.20%	-2.97
	Mar-22	26.25	33.00	2.15		0.00	-24.99%	-2.08%	-2.05	0.00	0.00%	-1.700%	-1.28	0.00	0.00%	-1.70%	-2.30
	Apr-22	24.77		0.00		8.00	-25.26%	-1.91%	-3.90	6.34	-23.30%	-1.400%	-2.53	11.39	-23.30%	-1.40%	-4.55
	May-22	25.02		0.00		11.00	-25.48%	-1.88%	-4.66	7.98	-21.00%	-1.700%	-2.95	14.35	-21.00%	-1.70%	-5.31
	Jun-22	23.15		0.00		15.00	-25.10%	-1.80%	-5.54	13.56	-18.50%	-2.500%	-4.39	24.38	-18.50%	-2.50%	-7.89
	Jul-22	13.17		0.00	4.00	41.70	-25.32%	-1.93%	-12.46	0.00	-18.60%	-3.500%	-2.63	0.00	-18.60%	-3.50%	-4.73
	Aug-22	13.24		0.00		44.44	-25.42%	-2.08%	-13.35	0.00	-18.90%	-4.500%	-3.38	0.00	-18.90%	-4.50%	-6.08
	Sep-22	13.22		0.00		61.00	-25.33%	-2.17%	-17.59	0.00	-18.60%	-5.200%	-3.91	0.00	-18.60%	-5.20%	-7.03
	Oct-22	25.00		0.00		32.00	-25.21%	-2.38%	-10.42	0.00	-20.10%	-5.200%	-3.91	0.00	-20.10%	-5.20%	-7.03
	Nov-22	24.96		2.08		0.00	-25.01%	-2.36%	-2.33	0.00	0.00%	-4.700%	-3.53	0.00	0.00%	-4.70%	-6.35
	Dec-22	26.28		2.15		0.00	-24.79%	-2.41%	-2.38	0.00	0.00%	-3.700%	-2.78	0.00	0.00%	-3.70%	-5.00
Totals		265.24	107	10.53	30.00	213.14			-78.94	27.88			-35.05	50.12			-63.02
2023	Jan-23	26.42	52.00	2.15	14.00	0.00	0.00%	-2.31%	-4.93	0.00	0.00%	-2.800%	-0.78	0.00	0.00%	-2.80%	-1.40
	Feb-23	23.74	53.00	2.01		0.00	0.00%	-2.00%	-4.26	0.00	0.00%	-2.200%	-0.61	0.00	0.00%	-2.20%	-1.10
	Mar-23	26.25	68.00	2.15		0.00	-24.99%	-2.08%	-4.43	0.00	0.00%	-1.700%	-0.47	0.00	0.00%	-1.70%	-0.85
	Apr-23	24.77	45.00	0.00		12.47	-25.26%	-1.91%	-7.21	0.00	-23.30%	-1.400%	-0.39	0.00	-23.30%	-1.40%	-0.70
	May-23	25.02	22.00	0.00		40.71	-25.48%	-1.88%	-14.39	0.00	-21.00%	-1.700%	-0.47	0.00	-21.00%	-1.70%	-0.85
	Jun-23	23.15	33.00	0.00		41.22	-25.10%	-1.80%	-14.18	0.00	-18.50%	-2.500%	-0.70	0.00	-18.50%	-2.50%	-1.25
	Jul-23	13.17	57.00	0.00		33.71	-25.32%	-1.93%	-12.64	0.00	-18.60%	-3.500%	-0.98	0.00	-18.60%	-3.50%	-1.75
	Aug-23	13.24	57.00	0.00		36.86	-25.42%	-2.08%	-13.80	0.00	-18.90%	-4.500%	-1.25	0.00	-18.90%	-4.50%	-2.26
	Sep-23	13.22	56.00	0.00		27.86	-25.33%	-2.17%	-11.69	0.00	-18.60%	-5.200%	-1.45	0.00	-18.60%	-5.20%	-2.61
	Oct-23	25.00	64.00	0.00		29.33	-25.21%	-2.38%	-12.47	0.00	-20.10%	-5.200%	-1.45	0.00	-20.10%	-5.20%	-2.61
	Nov-23	24.96	88.00	2.08		0.00	-25.01%	-2.36%	-5.03	0.00	0.00%	-4.700%	-1.31	0.00	0.00%	-4.70%	-2.36
	Dec-23	26.28	73.00	2.15		0.00	-24.79%	-2.41%	-5.13	0.00	0.00%	-3.700%	-1.03	0.00	0.00%	-3.70%	-1.85
Totals		265.24	668	10.53	30.00	222.16			-110.16	0.00			-10.90	0.00			-19.60

Aggregate Industries - WCR, Inc.

Summary of Replacement Sources

St. Vrain Creek

		Smith & Emmons Ditch					Longmont WWTP (ac-ft)	Godding, Dailey & Plumb Ditch (ac-ft)	Heaton Reservoir (ac-ft)
	Month	Leggett-Owens (ac-ft)	Deliveries (ac-ft)	Surface RF Factor	Subsurface RF Factor	Total Return Flow Obligations [ac-ft]			
2021	Jan-21		0.00	0%	-0.71%	0.00			
	Feb-21		0.00	0%	-0.61%	0.00			
	Mar-21		0.00	-50.00%	-0.56%	0.00			
	Apr-21		0.00	-22.50%	-0.63%	0.00	2.5		
	May-21		0.00	-36.15%	-2.70%	0.00	2.6		
	Jun-21		0.00	-30.32%	-4.73%	0.00	2.8		
	Jul-21		0.00	-30.98%	-6.99%	0.00	3		
	Aug-21		0.00	-22.50%	-5.64%	0.00	3.1		
	Sep-21		0.00	-22.50%	-3.19%	0.00	3.2		
	Oct-21		0.00	-22.50%	-1.79%	0.00	3.2		
	Nov-21		0.00	0%	-1.14%	0.00			
	Dec-21		0.00	0%	-0.87%	0.00			
Totals		0.00	0.00			0.00	20.40	0.00	0.00
2022	Jan-22		0.00	0%	-0.71%	0.00			
	Feb-22		0.00	0%	-0.61%	0.00			
	Mar-22		0.00	-50.00%	-0.56%	0.00			
	Apr-22		0.00	-22.50%	-0.63%	0.00	3.9		
	May-22		0.00	-36.15%	-2.70%	0.00	4.2		
	Jun-22		0.00	-30.32%	-4.73%	0.00	4.5		
	Jul-22		0.00	-30.98%	-6.99%	0.00	4.7		
	Aug-22		0.00	-22.50%	-5.64%	0.00	4.9		
	Sep-22		0.00	-22.50%	-3.19%	0.00	5.1		
	Oct-22		0.00	-22.50%	-1.79%	0.00	5.2		
	Nov-22		0.00	0%	-1.14%	0.00			
	Dec-22		0.00	0%	-0.87%	0.00			
Totals		0.00	0.00			0.00	32.50	0.00	0.00
2023	Jan-23		0.00	0%	-0.71%	0.00			
	Feb-23		0.00	0%	-0.61%	0.00			
	Mar-23		0.00	-50.00%	-0.56%	0.00			
	Apr-23		0.00	-22.50%	-0.63%	0.00	5.9		
	May-23		0.00	-36.15%	-2.70%	0.00	5.4		
	Jun-23		0.00	-30.32%	-4.73%	0.00	5.3		
	Jul-23		0.00	-30.98%	-6.99%	0.00	5.3		
	Aug-23		0.00	-22.50%	-5.64%	0.00	5.4		
	Sep-23		0.00	-22.50%	-3.19%	0.00	5.4		
	Oct-23		0.00	-22.50%	-1.79%	0.00	5.4		
	Nov-23		0.00	0%	-1.14%	0.00			
	Dec-23		0.00	0%	-0.87%	0.00			
Totals		0.00	0.00			0.00	38.10	0.00	0.00

Aggregate Industries - WCR, Inc.
Summary of Replacement Sources
Poudre River

	Month	Fort Collins / PRPA	GDC / Star Reservoir	City of Greeley/Bucklen Pit	Whitney Ditch - WW Farm - 5 shares Zone 2-A (74% of WW Farm, or 3.7 shares)				Whitney Ditch - Orr Farm #1 - 6 shares Zone 3 (6 + 26% of WW Farm, or 7.3 shares)				Whitney Ditch - Orr Farm #2 - 2.5 shares Zone 2-B (2.5 shares)				GIC			
					Deliveries	Surface RF	Subsurface RF	RF Obligations	Deliveries	Surface RF	Subsurface RF	RF Obligations	Deliveries	Surface RF	Subsurface RF	RF Obligations	Deliveries	Surface RF	Subsurface RF	RF Obligations
						Factors	Factors			Factors	Factors			Factors	Factors			Factors	Factors	
2021	Jan-21				0.00		-0.50%	-0.34	0.00		-0.80%	-0.84	0.00		-1.40%	-0.46	0.00	0.00%	-1.80%	-0.74
	Feb-21				0.00		-0.40%	-0.27	0.00		-0.70%	-0.73	0.00		-1.20%	-0.39	0.00	0.00%	-1.70%	-0.70
	Mar-21				0.00		-0.30%	-0.20	0.00		-0.60%	-0.63	0.00		-1.00%	-0.33	0.00	0.00%	-1.60%	-0.66
	Apr-21			4.06	2.96	-65.80%	-1.95	4.58	4.58	-73.70%	-3.38	1.44	1.44	-89.40%	-1.29	3.21	3.21	-23.70%	-1.50%	-1.38
	May-21			10.63	0.83	-54.60%	-0.45	1.28	1.28	-54.20%	-0.70	0.40	0.40	-55.80%	-0.22	0.95	0.95	-23.70%	-1.80%	-0.97
	Jun-21			9.44	4.63	-43.80%	-2.03	7.16	7.16	-41.10%	-2.94	2.25	2.25	-39.90%	-0.90	4.72	4.72	-23.70%	-2.10%	-1.99
	Jul-21			9.76	10.87	-41.20%	-4.48	16.80	16.80	-37.50%	-6.30	5.27	5.27	-34.60%	-1.82	8.89	8.89	-23.70%	-2.30%	-3.06
	Aug-21			9.76	12.87	-45.50%	-5.86	19.89	19.89	-42.10%	-8.37	6.24	6.24	-37.30%	-2.33	9.22	9.22	-23.70%	-2.40%	-3.18
	Sep-21			8.34	10.02	-55.40%	-5.55	15.48	15.48	-54.00%	-8.36	4.86	4.86	-48.10%	-2.34	9.52	9.52	-23.70%	-2.40%	-3.25
	Oct-21			5.36	1.11	-47.80%	-1.60%	-1.22	1.72	-47.80%	-2.10%	-2.23	0.54	-47.80%	-2.00%	-0.68	7.38	-23.70%	-2.30%	-2.70
	Nov-21				0.00		-0.90%	-0.39	0.00		-1.40%	-0.94	0.00		-1.80%	-0.38	0.00	0.00%	-2.10%	-0.88
	Dec-21				0.00		-0.60%	-0.26	0.00		-1.00%	-0.67	0.00		-1.60%	-0.34	0.00	0.00%	-2.00%	-0.84
Totals		0.00	0.00	57.34	43.29			-23.00	66.91			-36.08	20.99			-11.47	43.89			-20.33
2022	Jan-22				0.00		-0.50%	-0.22	0.00		-0.80%	-0.54	0.00		-1.40%	-0.29	0.00	0.00%	-1.80%	-0.75
	Feb-22				0.00		-0.40%	-0.17	0.00		-0.70%	-0.47	0.00		-1.20%	-0.25	0.00	0.00%	-1.70%	-0.71
	Mar-22				0.00		-0.30%	-0.13	0.00		-0.60%	-0.40	0.00		-1.00%	-0.21	0.00	0.00%	-1.60%	-0.67
	Apr-22			3.94	3.36	-65.80%	-2.21	5.20	5.20	-73.70%	-3.83	1.63	1.63	-89.40%	-1.46	16.48	16.48	-23.70%	-1.50%	-4.53
	May-22			10.46	9.71	-54.60%	-5.30	15.01	15.01	-54.20%	-8.14	4.71	4.71	-55.80%	-2.63	9.84	9.84	-23.70%	-1.80%	-3.08
	Jun-22			9.20	10.80	-43.80%	-4.73	16.69	16.69	-41.10%	-6.86	5.24	5.24	-39.90%	-2.09	10.12	10.12	-23.70%	-2.10%	-3.28
	Jul-22			9.46	14.94	-41.20%	-6.16	23.09	23.09	-37.50%	-8.66	7.25	7.25	-34.60%	-2.51	9.80	9.80	-23.70%	-2.30%	-3.28
	Aug-22			9.45	11.72	-45.50%	-5.33	18.12	18.12	-42.10%	-7.63	5.68	5.68	-37.30%	-2.12	9.22	9.22	-23.70%	-2.40%	-3.19
	Sep-22			8.06	10.67	-55.40%	-5.91	16.49	16.49	-54.00%	-8.91	5.17	5.17	-48.10%	-2.49	9.52	9.52	-23.70%	-2.40%	-3.26
	Oct-22			5.11	1.39	-47.80%	-1.60%	-1.66	2.15	-47.80%	-2.10%	-3.05	0.68	-47.80%	-2.00%	-0.93	6.66	-23.70%	-2.30%	-2.54
	Nov-22				0.00		-0.90%	-0.56	0.00		-1.40%	-1.35	0.00		-1.80%	-0.55	0.00	0.00%	-2.10%	-1.18
	Dec-22				0.00		-0.60%	-0.38	0.00		-1.00%	-0.97	0.00		-1.60%	-0.49	0.00	0.00%	-2.00%	-1.12
Totals		0.00	0.00	55.68	62.61			-32.77	96.76			-50.80	30.36			-16.01	71.64			-27.60
2023	Jan-23				0.00		-0.50%	-0.31	0.00		-0.80%	-0.77	0.00		-1.40%	-0.42	0.00	0.00%	-1.80%	-1.01
	Feb-23				0.00		-0.40%	-0.25	0.00		-0.70%	-0.68	0.00		-1.20%	-0.36	0.00	0.00%	-1.70%	-0.95
	Mar-23				0.00		-0.30%	-0.19	0.00		-0.60%	-0.58	0.00		-1.00%	-0.30	0.00	0.00%	-1.60%	-0.90
	Apr-23			5.12	3.12	-65.80%	-2.05	4.82	4.82	-73.70%	-3.55	1.51	1.51	-89.40%	-1.35	5.07	5.07	-23.70%	-1.50%	-2.04
	May-23			12.89	16.14	-54.60%	-8.81	24.94	24.94	-54.20%	-13.52	7.82	7.82	-55.80%	-4.37	10.14	10.14	-23.70%	-1.80%	-3.41
	Jun-23			11.61	20.60	-43.80%	-9.02	31.84	31.84	-41.10%	-13.08	9.99	9.99	-39.90%	-3.99	9.87	9.87	-23.70%	-2.10%	-3.52
	Jul-23			12.08	28.18	-41.20%	-11.61	43.55	43.55	-37.50%	-16.33	13.66	13.66	-34.60%	-4.73	9.99	9.99	-23.70%	-2.30%	-3.66
	Aug-23			12.09	25.02	-45.50%	-11.38	38.66	38.66	-42.10%	-16.28	12.13	12.13	-37.30%	-4.52	9.24	9.24	-23.70%	-2.40%	-3.54
	Sep-23			10.37	16.44	-55.40%	-9.11	25.41	25.41	-54.00%	-13.72	7.97	7.97	-48.10%	-3.83	9.27	9.27	-23.70%	-2.40%	-3.54
	Oct-23			6.80	0.76	-47.80%	-1.60%	-2.14	1.17	-47.80%	-2.10%	-4.16	0.37	-47.80%	-2.00%	-1.25	7.35	-23.70%	-2.30%	-3.03
	Nov-23				0.00		-0.90%	-0.99	0.00		-1.40%	-2.39	0.00		-1.80%	-0.96	0.00	0.00%	-2.10%	-1.21
	Dec-23				0.00		-0.60%	-0.66	0.00		-1.00%	-1.70	0.00		-1.60%	-0.86	0.00	0.00%	-2.00%	-1.15
Totals		0.00	0.00	70.97	110.24			-56.52	170.38			-86.76	53.45			-26.95	60.93			-27.97

Aggregate Industries, Inc.
Site: WW Farms Pit (WDID 0303014)
(aka Greeley West)

Cache La Poudre River Basin Accounting

Year	Month	Average Dewatering Rate (gpm)	Pumped for Dewatering (ac-ft)	Does Dewatering impact the River (Yes/No)	Monthly Net Evap (ft)	Exposed Surface Area (ac)	Evaporative Loss (ac-ft)	On-site Aggregate Production (tons)	Water Retained in Product (ac-ft)	Dust Control (ac-ft)	Concrete Batching (ac-ft)	Total On-Site Consumptive Use (ac-ft)	Total Lagged Depletions (ac-ft)	Lagged Dewatering Depletions (ac-ft)	Net Depletion (+) or Accretion (-) (ac-ft)
2021	Jan-21	1011	136.22	No	0.08	64.0	5.12	27,737	0.82	0.04	0.00	5.97	-7.85	-106.89	-7.85
	Feb-21	807	99.87	No	0.11	64.0	7.04	15,184	0.45	0.05	0.00	7.54	-8.29	-92.35	-8.29
	Mar-21	920	126.03	No	0.14	64.0	8.96	53,006	1.56	0.07	0.00	10.59	-9.97	-100.28	-9.97
	Apr-21	925	122.67	No	0.23	64.0	14.72	58,721	1.73	0.10	0.00	16.55	-13.61	-105.14	-13.61
	May-21	1138	155.87	No	0.29	64.0	18.56	60,007	1.77	0.12	0.00	20.44	-17.09	-123.17	-17.09
	Jun-21	1132	150.13	No	0.41	64.0	26.24	54,268	1.60	0.12	0.00	27.95	-22.15	-129.63	-22.15
	Jul-21	1116	152.93	No	0.45	64.0	28.80	48,421	1.43	0.12	0.14	30.48	-25.63	-132.87	-25.63
	Aug-21	1194	163.52	No	0.41	64.0	26.24	51,645	1.52	0.12	0.32	28.20	-25.78	-140.60	-25.78
	Sep-21	1060	140.58	No	0.29	64.0	18.56	42,618	1.25	0.12	0.50	20.43	-21.92	-133.33	-21.92
	Oct-21	1220	167.09	No	0.20	64.0	12.80	35,645	1.05	0.07	0.64	14.56	-17.36	-143.07	-17.36
	Nov-21	930	123.32	No	0.10	64.0	6.40	0	0.00	0.07	0.63	7.09	-11.97	-127.71	-11.97
	Dec-21	901	123.46	No	0.08	64.0	5.12	0	0.00	0.04	0.48	5.63	-9.03	-119.49	-9.03
Totals			1661.69		2.79		178.56	447,252	13.16	0.99	2.71	195.43	-190.66	-1454.53	-190.66
2022	Jan-22	838	112.92	No	0.08	64.0	5.12	0	0.00	0.04	0.32	5.47	-7.96	-113.14	-7.96
	Feb-22	697	86.25	No	0.11	64.0	7.04	0	0.00	0.05	0.33	7.42	-8.46	-97.19	-8.46
	Mar-22	946	129.66	No	0.14	64.0	8.96	42,083	1.24	0.07	0.65	10.92	-10.39	-111.99	-10.39
	Apr-22	1053	139.66	No	0.23	64.0	14.72	58,137	1.71	0.10	0.69	17.22	-14.29	-125.60	-14.29
	May-22	1477	202.31	No	0.29	64.0	18.56	58,973	1.74	0.12	0.87	21.28	-17.94	-161.01	-17.94
	Jun-22	1209	160.32	No	0.41	64.0	26.24	65,452	1.93	0.12	0.60	28.88	-23.10	-156.56	-23.10
	Jul-22	1218	166.86	No	0.45	64.0	28.80	58,055	1.71	0.12	0.73	31.35	-26.57	-154.56	-26.57
	Aug-22	1138	155.97	No	0.41	64.0	26.24	68,429	2.01	0.12	0.82	29.19	-26.78	-150.88	-26.78
	Sep-22	1492	197.78	No	0.29	64.0	18.56	63,328	1.86	0.12	0.51	21.05	-22.76	-170.04	-22.76
	Oct-22	1396	191.31	No	0.20	64.0	12.80	63,377	1.87	0.07	0.69	15.42	-18.24	-176.91	-18.24
	Nov-22	1723	228.44	No	0.10	64.0	6.40	33,773	0.99	0.07	0.82	8.28	-13.05	-196.70	-13.05
	Dec-22	0	0.00	No	0.08	64.0	5.12	25,000	0.74	0.04	0.44	6.34	-9.94	-93.11	-9.94
Totals			1771.49		2.79		178.56	536,607	15.79	0.99	7.48	202.82	-199.48	-1707.69	-199.48
2023	Jan-23	0	0.00	No	0.08	64.0	5.12	25,000	0.74	0.04	0.40	6.29	-8.83	-42.07	-8.83
	Feb-23	0	0.00	No	0.11	64.0	7.04	25,000	0.74	0.05	0.40	8.23	-9.33	-30.48	-9.33
	Mar-23	0	0.00	No	0.14	64.0	8.96	43,000	1.27	0.07	0.70	10.99	-10.89	-24.80	-10.89
	Apr-23	0	0.00	No	0.23	64.0	14.72	59,000	1.74	0.10	0.70	17.26	-14.59	-21.36	-14.59
	May-23	0	0.00	No	0.29	64.0	18.56	59,000	1.74	0.12	0.90	21.31	-18.18	-18.99	-18.18
	Jun-23	0	0.00	No	0.41	64.0	26.24	66,000	1.94	0.12	0.60	28.90	-23.30	-17.20	-23.30
	Jul-23	0	0.00	No	0.45	64.0	28.80	59,000	1.74	0.12	0.80	31.45	-26.80	-15.72	-26.80
	Aug-23	0	0.00	No	0.41	64.0	26.24	69,000	2.03	0.12	0.90	29.29	-27.01	-14.43	-27.01
	Sep-23	0	0.00	No	0.29	64.0	18.56	64,000	1.88	0.12	0.60	21.16	-22.98	-13.28	-22.98
	Oct-23	0	0.00	No	0.20	64.0	12.80	64,000	1.88	0.07	0.70	15.45	-18.42	-12.23	-18.42
	Nov-23	0	0.00	No	0.10	64.0	6.40	34,000	1.00	0.07	0.90	8.37	-13.22	-11.31	-13.22
	Dec-23	0	0.00	No	0.08	64.0	5.12	25,000	0.74	0.04	0.50	6.39	-10.11	-10.45	-10.11
Totals			0.00		2.79		178.56	592,000	17.42	0.99	8.10	205.07	-203.65	-232.32	-203.65

Aggregate Industries, Inc.

Site: F-Street Pit (WDID 0303015)

Cache La Poudre River Basin Accounting

Year	Month	Average Dewatering Rate (gpm)	Change in Rate (Yes/No)	Does Dewatering impact the River (Yes/No)	Monthly Net Evap (ft)	Exposed Surface Area (ac)	Evaporative Loss (ac-ft)	On-site Aggregate Production (tons)	Water Retained in Product (ft)	Water for Dust control (ac-ft)	Total On-Site Consumptive Use (ac-ft)	Total Lagged Depletions (ac-ft)	Lagged Dewatering Depletions (ac-ft)	Net Depletion (+) or Accretion (-) (ac-ft)
2021	Jan-21	0	No	Yes	0.08	26.2	2.10	0	0.00	0.00	2.10	-4.85	0.00	-4.85
	Feb-21	0	No	Yes	0.10	26.2	2.62	0	0.00	0.00	2.62	-4.31	0.00	-4.31
	Mar-21	0	No	Yes	0.13	26.2	3.41	0	0.00	0.00	3.41	-4.05	0.00	-4.05
	Apr-21	0	No	Yes	0.22	26.2	5.76	0	0.00	0.00	5.76	-4.19	0.00	-4.19
	May-21	0	No	Yes	0.28	26.2	7.34	0	0.00	0.00	7.34	-4.80	0.00	-4.80
	Jun-21	0	No	Yes	0.41	26.2	10.74	0	0.00	0.00	10.74	-5.78	0.00	-5.78
	Jul-21	0	No	Yes	0.45	26.2	11.79	0	0.00	0.00	11.79	-7.12	0.00	-7.12
	Aug-21	0	No	Yes	0.42	26.2	11.00	0	0.00	0.00	11.00	-8.12	0.00	-8.12
	Sep-21	0	No	Yes	0.29	26.2	7.60	0	0.00	0.00	7.60	-8.37	0.00	-8.37
	Oct-21	0	No	Yes	0.19	26.2	4.98	0	0.00	0.00	4.98	-7.78	0.00	-7.78
	Nov-21	0	No	Yes	0.09	26.2	2.36	0	0.00	0.00	2.36	-6.76	0.00	-6.76
	Dec-21	0	No	Yes	0.08	26.2	2.10	0	0.00	0.00	2.10	-5.65	0.00	-5.65
Totals							71.79	0	0.00	0.00	71.79	-71.79	0.00	-71.79
2022	Jan-22	0	No	Yes	0.08	26.2	2.10	0	0.00	0.00	2.10	-4.85	0.00	-4.85
	Feb-22	0	No	Yes	0.10	26.2	2.62	0	0.00	0.00	2.62	-4.31	0.00	-4.31
	Mar-22	0	No	Yes	0.13	26.2	3.41	0	0.00	0.00	3.41	-4.05	0.00	-4.05
	Apr-22	0	No	Yes	0.22	26.2	5.76	0	0.00	0.00	5.76	-4.19	0.00	-4.19
	May-22	0	No	Yes	0.28	26.2	7.34	0	0.00	0.00	7.34	-4.80	0.00	-4.80
	Jun-22	0	No	Yes	0.41	26.2	10.74	0	0.00	0.00	10.74	-5.78	0.00	-5.78
	Jul-22	0	No	Yes	0.45	26.2	11.79	0	0.00	0.00	11.79	-7.12	0.00	-7.12
	Aug-22	0	No	Yes	0.42	26.2	11.00	0	0.00	0.00	11.00	-8.12	0.00	-8.12
	Sep-22	0	No	Yes	0.29	26.2	7.60	0	0.00	0.00	7.60	-8.37	0.00	-8.37
	Oct-22	0	No	Yes	0.19	26.2	4.98	0	0.00	0.00	4.98	-7.78	0.00	-7.78
	Nov-22	0	No	Yes	0.09	26.2	2.36	0	0.00	0.00	2.36	-6.76	0.00	-6.76
	Dec-22	0	No	Yes	0.08	26.2	2.10	0	0.00	0.00	2.10	-5.65	0.00	-5.65
Totals							71.79	0	0.00	0.00	71.79	-71.79	0.00	-71.79
2023	Jan-23	0	No	Yes	0.08	26.2	2.10	0	0.00	0.00	2.10	-4.85	0.00	-4.85
	Feb-23	0	No	Yes	0.10	26.2	2.62	0	0.00	0.00	2.62	-4.31	0.00	-4.31
	Mar-23	0	No	Yes	0.13	26.2	3.41	0	0.00	0.00	3.41	-4.05	0.00	-4.05
	Apr-23	0	No	Yes	0.22	26.2	5.76	0	0.00	0.00	5.76	-4.19	0.00	-4.19
	May-23	0	No	Yes	0.28	26.2	7.34	0	0.00	0.00	7.34	-4.80	0.00	-4.80
	Jun-23	0	No	Yes	0.41	26.2	10.74	0	0.00	0.00	10.74	-5.78	0.00	-5.78
	Jul-23	0	No	Yes	0.45	26.2	11.79	0	0.00	0.00	11.79	-7.12	0.00	-7.12
	Aug-23	0	No	Yes	0.42	26.2	11.00	0	0.00	0.00	11.00	-8.12	0.00	-8.12
	Sep-23	0	No	Yes	0.29	26.2	7.60	0	0.00	0.00	7.60	-8.37	0.00	-8.37
	Oct-23	0	No	Yes	0.19	26.2	4.98	0	0.00	0.00	4.98	-7.78	0.00	-7.78
	Nov-23	0	No	Yes	0.09	26.2	2.36	0	0.00	0.00	2.36	-6.76	0.00	-6.76
	Dec-23	0	No	Yes	0.08	26.2	2.10	0	0.00	0.00	2.10	-5.65	0.00	-5.65
Totals							71.79	0	0.00	0.00	71.79	-71.79	0.00	-71.79

Aggregate Industries, Inc.
Site: **Distel Pit (WDID 0503000)**
(aka Longmont East)

Saint Vrain Creek Basin Accounting

Year	Month	Average Dewatering Rate (gpm)	Pumped for Dewatering (ac-ft)	Does Dewatering impact the River	Monthly Net Evaporation (feet)	Exposed Water Surface Area (acres)	Evaporative Losses (acre-feet)	On-site Aggregate Production (tons)	Water Retained in Product (acre-feet)	Water Used For Dust Control (acre-feet)	Water Used for Concrete Batching (acre-feet)	Total On-Site Consumptive Use (acre-feet)	Lagged Depletion (acre-feet)	Lagged Dewatering Depletions (ac-ft)	Net Depletion (+) or Accretion (-) (ac-ft)
2021	Jan-21	0	0.00	Yes	0.08	0.0	0.00	0	0.00	0.03	0.00	0.03	-0.06	0.00	-0.06
	Feb-21	0	0.00	Yes	0.09	0.0	0.00	0	0.00	0.05	0.00	0.05	-0.06	0.00	-0.07
	Mar-21	0	0.00	Yes	0.13	0.0	0.00	0	0.00	0.08	0.00	0.08	-0.08	0.00	-0.08
	Apr-21	0	0.00	Yes	0.20	0.0	0.00	0	0.00	0.08	0.00	0.08	-0.09	0.00	-0.09
	May-21	0	0.00	Yes	0.25	0.0	0.00	0	0.00	0.15	0.00	0.15	-0.12	0.00	-0.12
	Jun-21	0	0.00	Yes	0.38	0.0	0.00	0	0.00	0.23	0.00	0.23	-0.17	0.00	-0.17
	Jul-21	0	0.00	Yes	0.44	0.0	0.00	0	0.00	0.23	0.00	0.23	-0.19	0.00	-0.19
	Aug-21	0	0.00	Yes	0.38	0.0	0.00	0	0.00	0.23	0.00	0.23	-0.20	0.00	-0.20
	Sep-21	0	0.00	Yes	0.26	0.0	0.00	0	0.00	0.23	0.00	0.23	-0.21	0.00	-0.21
	Oct-21	0	0.00	Yes	0.18	0.0	0.00	0	0.00	0.15	0.00	0.15	-0.17	0.00	-0.18
	Nov-21	0	0.00	Yes	0.10	0.0	0.00	0	0.00	0.05	0.00	0.05	-0.11	0.00	-0.11
	Dec-21	0	0.00	Yes	0.08	0.0	0.00	0	0.00	0.03	0.00	0.03	-0.08	0.00	-0.08
Totals			0.00				0.00	0	0.00	1.54	0.00	1.54	-1.54	-0.01	-1.55
2022	Jan-22	0	0.00	Yes	0.08	0.0	0.00	0	0.00	0.03	0.00	0.03	-0.06	0.00	-0.06
	Feb-22	0	0.00	Yes	0.09	0.0	0.00	0	0.00	0.05	0.00	0.05	-0.06	0.00	-0.07
	Mar-22	0	0.00	Yes	0.13	0.0	0.00	0	0.00	0.08	0.00	0.08	-0.08	0.00	-0.08
	Apr-22	0	0.00	Yes	0.20	0.0	0.00	0	0.00	0.08	0.00	0.08	-0.09	0.00	-0.09
	May-22	0	0.00	Yes	0.25	0.0	0.00	0	0.00	0.15	0.00	0.15	-0.12	0.00	-0.12
	Jun-22	0	0.00	Yes	0.38	0.0	0.00	0	0.00	0.23	0.00	0.23	-0.17	0.00	-0.17
	Jul-22	0	0.00	Yes	0.44	0.0	0.00	0	0.00	0.23	0.00	0.23	-0.19	0.00	-0.19
	Aug-22	0	0.00	Yes	0.38	0.0	0.00	0	0.00	0.23	0.00	0.23	-0.20	0.00	-0.20
	Sep-22	0	0.00	Yes	0.26	0.0	0.00	0	0.00	0.23	0.00	0.23	-0.21	0.00	-0.21
	Oct-22	0	0.00	Yes	0.18	0.0	0.00	0	0.00	0.15	0.00	0.15	-0.17	0.00	-0.18
	Nov-22	0	0.00	Yes	0.10	0.0	0.00	0	0.00	0.05	0.00	0.05	-0.11	0.00	-0.11
	Dec-22	0	0.00	Yes	0.08	0.0	0.00	0	0.00	0.03	0.00	0.03	-0.08	0.00	-0.08
Totals			0.00				0.00	0	0.00	1.54	0.00	1.54	-1.54	-0.01	-1.55
2023	Jan-23	0	0.00	Yes	0.08	0.0	0.00	0	0.00	0.03	0.00	0.03	-0.06	0.00	-0.06
	Feb-23	0	0.00	Yes	0.09	0.0	0.00	0	0.00	0.05	0.00	0.05	-0.06	0.00	-0.06
	Mar-23	0	0.00	Yes	0.13	0.0	0.00	0	0.00	0.08	0.00	0.08	-0.08	0.00	-0.08
	Apr-23	0	0.00	Yes	0.20	0.0	0.00	0	0.00	0.08	0.00	0.08	-0.09	0.00	-0.09
	May-23	0	0.00	Yes	0.25	0.0	0.00	0	0.00	0.15	0.00	0.15	-0.12	0.00	-0.12
	Jun-23	0	0.00	Yes	0.38	0.0	0.00	0	0.00	0.23	0.00	0.23	-0.17	0.00	-0.17
	Jul-23	0	0.00	Yes	0.44	0.0	0.00	0	0.00	0.23	0.00	0.23	-0.19	0.00	-0.19
	Aug-23	0	0.00	Yes	0.38	0.0	0.00	0	0.00	0.23	0.00	0.23	-0.20	0.00	-0.20
	Sep-23	0	0.00	Yes	0.26	0.0	0.00	0	0.00	0.23	0.00	0.23	-0.21	0.00	-0.21
	Oct-23	0	0.00	Yes	0.18	0.0	0.00	0	0.00	0.15	0.00	0.15	-0.17	0.00	-0.17
	Nov-23	0	0.00	Yes	0.10	0.0	0.00	0	0.00	0.05	0.00	0.05	-0.11	0.00	-0.11
	Dec-23	0	0.00	Yes	0.08	0.0	0.00	0	0.00	0.03	0.00	0.03	-0.08	0.00	-0.08
Totals			0.00				0.00	0	0.00	1.54	0.00	1.54	-1.54	0.00	-1.54

Aggregate Industries, Inc.
Site: Tull Pit (WDID 0603001)

Saint Vrain Creek Basin Accounting ek Basin Accounting

Year	Month	Average Dewatering Rate (gpm)	Pumped for Dewatering (ac-ft)	Does Dewatering impact the River (Yes/No)	Monthly Net Evaporation (feet)	Exposed Water Surface Area (acres)	Evaporative Losses (acre-feet)	On-site Aggregate Production (tons)	Water Retained in Product (acre-feet)	Water Used For Dust Control (acre-feet)	Total On-Site Consumptive Use (acre-feet)	Lagged Depletion (acre-feet)	Lagged Dewatering Depletions (ac-ft)	Net Depletion (+) or Accretion (-) (ac-ft)
2021	Jan-21	0	0.01	No	0.08	4.0	0.32	38,811	1.14	0.04	1.50	-1.84	-4.50	-1.84
	Feb-21	0	0.00	No	0.09	4.0	0.36	27,904	0.82	0.05	1.23	-1.83	-4.37	-1.83
	Mar-21	1	0.10	No	0.13	4.0	0.52	49,788	1.47	0.07	2.05	-1.82	-4.25	-1.82
	Apr-21	1	0.07	No	0.20	4.0	0.80	50,513	1.49	0.10	2.39	-1.79	-4.12	-1.79
	May-21	1	0.14	No	0.26	4.0	1.04	46,397	1.37	0.12	2.52	-1.78	-4.01	-1.78
	Jun-21	1	0.08	No	0.38	4.0	1.52	65,889	1.94	0.12	3.57	-1.79	-3.90	-1.79
	Jul-21	1	0.09	No	0.44	4.0	1.76	58,902	1.73	0.12	3.61	-1.82	-3.79	-1.82
	Aug-21	0	0.06	No	0.38	4.0	1.52	97,465	2.87	0.12	4.50	-1.87	-3.68	-1.87
	Sep-21	1	0.07	No	0.26	4.0	1.04	30,759	0.91	0.12	2.06	-1.94	-3.58	-1.94
	Oct-21	20	2.72	No	0.18	4.0	0.72	48,573	1.43	0.07	2.21	-2.02	-3.48	-2.02
	Nov-21	4	0.53	No	0.10	4.0	0.40	72,363	2.13	0.07	2.59	-2.05	-3.39	-2.05
	Dec-21	0	0.00	No	0.08	4.0	0.32	86,549	2.55	0.04	2.90	-2.07	-3.35	-2.07
Totals							10.32	673,913	19.83	0.99	31.14	-22.63	-46.43	-22.63
2022	Jan-22	7	1.00	No	0.08	4.0	0.32	36,823	1.08	0.04	1.44	-2.08	-3.30	-2.08
	Feb-22	26	3.25	No	0.09	4.0	0.36	45,839	1.35	0.05	1.76	-2.09	-3.23	-2.09
	Mar-22	8	1.03	No	0.13	4.0	0.52	77,350	2.28	0.07	2.86	-2.07	-3.17	-2.07
	Apr-22	8	1.00	No	0.20	4.0	0.80	71,004	2.09	0.10	2.99	-2.06	-3.16	-2.06
	May-22	130	17.79	No	0.26	4.0	1.04	65,428	1.93	0.12	3.08	-2.07	-3.13	-2.07
	Jun-22	42	5.57	No	0.38	4.0	1.52	51,159	1.51	0.12	3.14	-2.09	-3.18	-2.09
	Jul-22	41	5.57	No	0.44	4.0	1.76	53,484	1.57	0.12	3.45	-2.12	-3.46	-2.12
	Aug-22	108	14.80	No	0.38	4.0	1.52	71,098	2.09	0.12	3.73	-2.16	-3.72	-2.16
	Sep-22	54	7.10	No	0.26	4.0	1.04	66,924	1.97	0.12	3.12	-2.21	-3.93	-2.21
	Oct-22	35	4.85	No	0.18	4.0	0.72	61,505	1.81	0.07	2.60	-2.25	-4.21	-2.25
	Nov-22	0	0.00	No	0.10	4.0	0.40	36,778	1.08	0.07	1.55	-2.29	-4.41	-2.29
	Dec-22	0	0.00	No	0.08	4.0	0.32	40,588	1.19	0.04	1.55	-2.30	-4.47	-2.30
Totals							10.32	677,980	19.95	0.99	31.26	-25.79	-43.37	-25.79
2023	Jan-23	0	0.00	No	0.08	4.0	0.32	37,000	1.09	0.04	1.44	-2.29	-4.37	-2.29
	Feb-23	0	0.00	No	0.09	4.0	0.36	46,000	1.35	0.05	1.76	-2.25	-4.18	-2.25
	Mar-23	0	0.00	No	0.13	4.0	0.52	78,000	2.30	0.07	2.88	-2.21	-3.98	-2.21
	Apr-23	0	0.00	No	0.20	4.0	0.80	72,000	2.12	0.10	3.02	-2.19	-3.79	-2.19
	May-23	0	0.00	No	0.26	4.0	1.04	66,000	1.94	0.12	3.10	-2.19	-3.61	-2.19
	Jun-23	0	0.00	No	0.38	4.0	1.52	52,000	1.53	0.12	3.17	-2.21	-3.44	-2.21
	Jul-23	0	0.00	No	0.44	4.0	1.76	54,000	1.59	0.12	3.46	-2.24	-3.30	-2.24
	Aug-23	0	0.00	No	0.38	4.0	1.52	72,000	2.12	0.12	3.75	-2.28	-3.17	-2.28
	Sep-23	0	0.00	No	0.26	4.0	1.04	67,000	1.97	0.12	3.13	-2.33	-3.05	-2.33
	Oct-23	0	0.00	No	0.18	4.0	0.72	62,000	1.82	0.07	2.61	-2.38	-2.94	-2.38
	Nov-23	0	0.00	No	0.10	4.0	0.40	37,000	1.09	0.07	1.55	-2.41	-2.84	-2.41
	Dec-23	0	0.00	No	0.08	4.0	0.32	41,000	1.21	0.04	1.56	-2.42	-2.75	-2.42
Totals							10.32	684,000	20.13	0.99	31.44	-27.39	-41.43	-27.39

Aggregate Industries, Inc.

Site: Irwin-Thomas Pit (WDID 0505626)

Saint Vrain Creek Basin Accounting ek Basin Accounting

Year	Month	Average Dewatering Rate (gpm)	Pumped for Dewatering (ac-ft)	Does Dewatering impact the River (Yes/No)	Monthly Net Evaporation (feet)	Exposed Water Surface Area (acres)	Evaporative Losses (acre-feet)	On-site Aggregate Production (tons)	Water Retained in Product (acre-feet)	Water Used For Dust Control and Slurry Wall (acre-feet)	Total On-Site Consumptive Use (acre-feet)	Lagged Depletion (acre-feet)	Lagged Dewatering Depletions (ac-ft)	Net Depletion (+) or Accretion (-) (ac-ft)
2021	Jan-21	0	0.00	No	0.08	0.0	0.00	0	0.00	0.00	0.00	0.00	0.00	0.00
	Feb-21	0	0.00	No	0.09	0.0	0.00	0	0.00	0.00	0.00	0.00	0.00	0.00
	Mar-21	0	0.00	No	0.13	0.0	0.00	0	0.00	0.00	0.00	0.00	0.00	0.00
	Apr-21	0	0.00	No	0.20	0.0	0.00	0	0.00	0.00	0.00	0.00	0.00	0.00
	May-21	0	0.00	No	0.25	0.0	0.00	0	0.00	0.00	0.00	0.00	0.00	0.00
	Jun-21	0	0.00	No	0.38	0.0	0.00	0	0.00	0.00	0.00	0.00	0.00	0.00
	Jul-21	0	0.00	No	0.44	0.0	0.00	0	0.00	0.00	0.00	0.00	0.00	0.00
	Aug-21	0	0.00	No	0.38	0.0	0.00	0	0.00	0.00	0.00	0.00	0.00	0.00
	Sep-21	0	0.00	No	0.26	0.0	0.00	0	0.00	0.00	0.00	0.00	0.00	0.00
	Oct-21	0	0.00	No	0.18	0.0	0.00	0	0.00	0.00	0.00	0.00	0.00	0.00
	Nov-21	0	0.00	No	0.10	0.0	0.00	0	0.00	0.00	0.00	0.00	0.00	0.00
	Dec-21	0	0.00	No	0.08	0.0	0.00	0	0.00	0.00	0.00	0.00	0.00	0.00
Totals							0.00	0	0.00	0.00	0.00	0.00	0.00	0.00
2022	Jan-22	0	0.00	No	0.08	0.0	0.00	0	0.00	0.00	0.00	0.00	0.00	0.00
	Feb-22	0	0.00	No	0.09	0.0	0.00	0	0.00	0.00	0.00	0.00	0.00	0.00
	Mar-22	0	0.00	No	0.13	0.0	0.00	0	0.00	0.00	0.00	0.00	0.00	0.00
	Apr-22	0	0.00	No	0.20	0.0	0.00	0	0.00	0.00	0.00	0.00	0.00	0.00
	May-22	0	0.00	No	0.25	0.0	0.00	0	0.00	0.00	0.00	0.00	0.00	0.00
	Jun-22	0	0.00	No	0.38	0.0	0.00	0	0.00	0.00	0.00	0.00	0.00	0.00
	Jul-22	0	0.00	No	0.44	0.0	0.00	0	0.00	0.00	0.00	0.00	0.00	0.00
	Aug-22	0	0.00	No	0.38	0.0	0.00	0	0.00	0.00	0.00	0.00	0.00	0.00
	Sep-22	0	0.00	No	0.26	0.0	0.00	0	0.00	0.00	0.00	0.00	0.00	0.00
	Oct-22	0	0.00	No	0.18	0.0	0.00	0	0.00	0.00	0.00	0.00	0.00	0.00
	Nov-22	0	0.00	No	0.10	0.0	0.00	0	0.00	0.00	0.00	0.00	0.00	0.00
	Dec-22	0	0.00	No	0.08	0.0	0.00	0	0.00	0.00	0.00	0.00	0.00	0.00
Totals							0.00	0	0.00	0.00	0.00	0.00	0.00	0.00
2023	Jan-23	0	0.00	No	0.08	1.0	0.08	15,000	0.44	10.00	10.52	-0.73	0.00	-0.73
	Feb-23	0	0.00	No	0.09	1.0	0.09	45,000	1.32	10.00	11.41	-2.93	0.00	-2.93
	Mar-23	0	0.00	No	0.13	1.0	0.13	45,000	1.32	1.00	2.45	-3.80	0.00	-3.80
	Apr-23	0	0.00	No	0.20	1.0	0.20	45,000	1.32	1.00	2.52	-2.92	0.00	-2.92
	May-23	0	0.00	No	0.25	1.0	0.25	45,000	1.32	1.00	2.57	-2.46	0.00	-2.46
	Jun-23	0	0.00	No	0.38	1.0	0.38	45,000	1.32	1.00	2.70	-2.28	0.00	-2.28
	Jul-23	0	0.00	No	0.44	1.0	0.44	45,000	1.32	1.00	2.76	-2.23	0.00	-2.23
	Aug-23	0	0.00	No	0.38	1.0	0.38	45,000	1.32	1.00	2.70	-2.23	0.00	-2.23
	Sep-23	0	0.00	No	0.26	1.0	0.26	45,000	1.32	1.00	2.58	-2.23	0.00	-2.23
	Oct-23	0	0.00	No	0.18	1.0	0.18	45,000	1.32	1.00	2.50	-2.21	0.00	-2.21
	Nov-23	0	0.00	No	0.10	1.0	0.10	45,000	1.32	1.00	2.42	-2.20	0.00	-2.20
	Dec-23	0	0.00	No	0.08	1.0	0.08	35,000	1.03	1.00	2.11	-2.17	0.00	-2.17
Totals							2.57	500,000	14.72	30.00	47.29	-28.40	0.00	-28.40

Aggregate Industries, Inc.
Site: Fredstrom Pit (WDID 0505629)

Saint Vrain Creek Basin Accounting ek Basin Accounting

		Average Dewatering Rate (gpm)	Pumped for Dewatering (ac-ft)	Does Dewatering impact the River (Yes/No)	Monthly Net Evaporation (feet)	Exposed Water Surface Area (acres)	Evaporative Losses (acre-feet)	On-site Aggregate Production (tons)	Water Retained in Product (acre-feet)	Water Used For Dust Control (acre-feet)	Total On-Site Consumptive Use (acre-feet)	Lagged Depletion (acre-feet)	Lagged Dewatering Depletions (ac-ft)	Net Depletion (+) or Accretion (-) (ac-ft)
Year	Month													
2021	Jan-21	0	0.00	No	0.08	0.0	0.00	0	0.00	0.00	0.00	0.00	0.00	0.00
	Feb-21	0	0.00	No	0.09	0.0	0.00	0	0.00	0.00	0.00	0.00	0.00	0.00
	Mar-21	0	0.00	No	0.13	0.0	0.00	0	0.00	0.00	0.00	0.00	0.00	0.00
	Apr-21	0	0.00	No	0.20	0.0	0.00	0	0.00	0.00	0.00	0.00	0.00	0.00
	May-21	0	0.00	No	0.25	0.0	0.00	0	0.00	0.00	0.00	0.00	0.00	0.00
	Jun-21	0	0.00	No	0.38	0.0	0.00	0	0.00	0.00	0.00	0.00	0.00	0.00
	Jul-21	0	0.00	No	0.44	0.0	0.00	0	0.00	0.00	0.00	0.00	0.00	0.00
	Aug-21	0	0.00	No	0.38	0.0	0.00	0	0.00	0.00	0.00	0.00	0.00	0.00
	Sep-21	0	0.00	No	0.26	0.0	0.00	0	0.00	0.00	0.00	0.00	0.00	0.00
	Oct-21	0	0.00	No	0.18	0.0	0.00	0	0.00	0.00	0.00	0.00	0.00	0.00
	Nov-21	0	0.00	No	0.10	0.0	0.00	0	0.00	0.00	0.00	0.00	0.00	0.00
	Dec-21	0	0.00	No	0.08	0.0	0.00	0	0.00	0.00	0.00	0.00	0.00	0.00
Totals						0.00	0	0.00	0.00	0.00	0.00	0.00	0.00	
2022	Jan-22	0	0.00	No	0.08	0.0	0.00	0	0.00	0.00	0.00	0.00	0.00	0.00
	Feb-22	0	0.00	No	0.09	0.0	0.00	0	0.00	0.00	0.00	0.00	0.00	0.00
	Mar-22	0	0.00	No	0.13	0.0	0.00	0	0.00	0.00	0.00	0.00	0.00	0.00
	Apr-22	0	0.00	No	0.20	0.0	0.00	0	0.00	0.00	0.00	0.00	0.00	0.00
	May-22	0	0.00	No	0.25	0.0	0.00	0	0.00	0.00	0.00	0.00	0.00	0.00
	Jun-22	0	0.00	No	0.38	0.0	0.00	0	0.00	0.00	0.00	0.00	0.00	0.00
	Jul-22	0	0.00	No	0.44	0.0	0.00	0	0.00	0.00	0.00	0.00	0.00	0.00
	Aug-22	0	0.00	No	0.38	0.0	0.00	0	0.00	0.00	0.00	0.00	0.00	0.00
	Sep-22	0	0.00	No	0.26	0.0	0.00	0	0.00	0.00	0.00	0.00	0.00	0.00
	Oct-22	0	0.00	No	0.18	0.0	0.00	0	0.00	0.00	0.00	0.00	0.00	0.00
	Nov-22	0	0.00	No	0.10	0.0	0.00	0	0.00	0.00	0.00	0.00	0.00	0.00
	Dec-22	0	0.00	No	0.08	0.0	0.00	0	0.00	0.00	0.00	0.00	0.00	0.00
Totals						0.00	0	0.00	0.00	0.00	0.00	0.00	0.00	
2023	Jan-23	0	0.00	No	0.08	0.0	0.00	0	0.00	0.00	0.00	0.00	0.00	0.00
	Feb-23	0	0.00	No	0.09	0.0	0.00	0	0.00	0.00	0.00	0.00	0.00	0.00
	Mar-23	0	0.00	No	0.13	0.0	0.00	0	0.00	0.00	0.00	0.00	0.00	0.00
	Apr-23	0	0.00	No	0.20	0.0	0.00	0	0.00	0.00	0.00	0.00	0.00	0.00
	May-23	0	0.00	No	0.25	0.0	0.00	0	0.00	0.00	0.00	0.00	0.00	0.00
	Jun-23	0	0.00	No	0.38	0.0	0.00	0	0.00	0.00	0.00	0.00	0.00	0.00
	Jul-23	0	0.00	No	0.44	0.0	0.00	0	0.00	0.00	0.00	0.00	0.00	0.00
	Aug-23	0	0.00	No	0.38	0.0	0.00	0	0.00	0.00	0.00	0.00	0.00	0.00
	Sep-23	0	0.00	No	0.26	0.0	0.00	0	0.00	0.00	0.00	0.00	0.00	0.00
	Oct-23	0	0.00	No	0.18	0.0	0.00	0	0.00	0.00	0.00	0.00	0.00	0.00
	Nov-23	0	0.00	No	0.10	0.0	0.00	0	0.00	0.00	0.00	0.00	0.00	0.00
	Dec-23	0	0.00	No	0.08	0.0	0.00	0	0.00	0.00	0.00	0.00	0.00	0.00
Totals						0.00	0	0.00	0.00	0.00	0.00	0.00	0.00	

Aggregate Industries, Inc.

Site: Jeronimus Pit (WDID 0203029)

South Platte River Basin Accounting

Year	Month	Monthly Net Evaporation (feet)	Exposed Water Surface Area (acres)	Evaporative Losses (acre-feet)	On-site Aggregate Production (tons)	Water Retained in Product (acre-feet)	Dust Control (acre-feet)	Total On-Site Consumptive Use (acre-feet)	Lagged Depletion (acre-feet)
2021	Jan-21	0.08	5.6	0.47	0	0.00	0.00	0.47	-0.88
	Feb-21	0.10	5.6	0.56	0	0.00	0.00	0.56	-0.85
	Mar-21	0.13	5.6	0.74	0	0.00	0.00	0.74	-0.88
	Apr-21	0.20	5.6	1.14	0	0.00	0.00	1.14	-1.00
	May-21	0.29	5.6	1.60	0	0.00	0.00	1.60	-1.22
	Jun-21	0.41	5.6	2.28	0	0.00	0.00	2.28	-1.55
	Jul-21	0.42	5.6	2.37	0	0.00	0.00	2.37	-1.82
	Aug-21	0.39	5.6	2.16	0	0.00	0.00	2.16	-1.91
	Sep-21	0.29	5.6	1.64	0	0.00	0.00	1.64	-1.80
	Oct-21	0.19	5.6	1.09	0	0.00	0.00	1.09	-1.55
	Nov-21	0.09	5.6	0.51	0	0.00	0.00	0.51	-1.23
	Dec-21	0.08	5.6	0.44	0	0.00	0.00	0.44	-0.98
Totals				15.00	0	0.00	0.00	15.00	-15.66
2022	Jan-22	0.08	5.6	0.47	0	0.00	0.00	0.47	-0.88
	Feb-22	0.10	5.6	0.56	0	0.00	0.00	0.56	-0.84
	Mar-22	0.13	5.6	0.74	0	0.00	0.00	0.74	-0.87
	Apr-22	0.20	5.6	1.14	0	0.00	0.00	1.14	-1.00
	May-22	0.29	5.6	1.60	0	0.00	0.00	1.60	-1.22
	Jun-22	0.41	5.6	2.28	0	0.00	0.00	2.28	-1.54
	Jul-22	0.42	5.6	2.37	0	0.00	0.00	2.37	-1.82
	Aug-22	0.39	5.6	2.16	0	0.00	0.00	2.16	-1.90
	Sep-22	0.29	5.6	1.64	0	0.00	0.00	1.64	-1.79
	Oct-22	0.19	5.6	1.09	0	0.00	0.00	1.09	-1.54
	Nov-22	0.09	5.6	0.51	0	0.00	0.00	0.51	-1.22
	Dec-22	0.08	5.6	0.44	0	0.00	0.00	0.44	-0.98
Totals				15.00	0	0.00	0.00	15.00	-15.61
2023	Jan-23	0.08	5.6	0.47	0	0.00	0.00	0.47	-0.87
	Feb-23	0.10	5.6	0.56	0	0.00	0.00	0.56	-0.84
	Mar-23	0.13	5.6	0.74	0	0.00	0.00	0.74	-0.87
	Apr-23	0.20	5.6	1.14	0	0.00	0.00	1.14	-1.00
	May-23	0.29	5.6	1.60	0	0.00	0.00	1.60	-1.22
	Jun-23	0.41	5.6	2.28	0	0.00	0.00	2.28	-1.54
	Jul-23	0.42	5.6	2.37	0	0.00	0.00	2.37	-1.82
	Aug-23	0.39	5.6	2.16	0	0.00	0.00	2.16	-1.90
	Sep-23	0.29	5.6	1.64	0	0.00	0.00	1.64	-1.79
	Oct-23	0.19	5.6	1.09	0	0.00	0.00	1.09	-1.54
	Nov-23	0.09	5.6	0.51	0	0.00	0.00	0.51	-1.22
	Dec-23	0.08	5.6	0.44	0	0.00	0.00	0.44	-0.98
Totals				15.00	0.00	0.00	0.00	15.00	-15.57

Aggregate Industries, Inc.

Site: Hazeltine Pit (WDID 0203030)
(aka Thornton)

South Platte River Basin Accounting

Year	Month	Average Dewatering Rate (gpm)	Pumped for Dewatering (ac-ft)	Does Dewatering impact the River (Yes/No)	Monthly Net Evap (ft)	Exposed Surface Area (ac)	Evaporative Losses (ac-ft)	On-site Aggregate Production (tons)	Water Retained in Product (ac-ft)	Water Used for Dust Control (ac-ft)	Total On-Site Consumptive Use (ac-ft)	Lagged Depletion (ac-ft)	Lagged Dewatering Depletions (ac-ft)	Orr Drain Inflow (ac-ft)	Pump Outflow (ac-ft)	Surface Water Depletion (ac-ft)	Net Depletion (+) or Accretion (-) (ac-ft)
2021	Jan-21	0	0.00	Yes	0.08	0.0	0.00	0	0.00	0.00	0.00	-0.15	-4.17	-	-		-4.32
	Feb-21	0	0.00	Yes	0.10	0.0	0.00	0	0.00	0.00	0.00	-0.15	-4.12	-	-		-4.27
	Mar-21	0	0.00	Yes	0.13	0.0	0.00	0	0.00	0.00	0.00	-0.15	-4.07	-	-		-4.22
	Apr-21	0	0.00	Yes	0.20	0.0	0.00	0	0.00	0.00	0.00	-0.15	-4.03	-	-		-4.18
	May-21	0	0.00	Yes	0.29	0.0	0.00	0	0.00	0.00	0.00	-0.14	-4.00	15.35	15.09	-0.26	-4.41
	Jun-21	0	0.00	Yes	0.41	0.0	0.00	0	0.00	0.00	0.00	-0.14	-3.96	23.31	22.09	-1.22	-5.32
	Jul-21	0	0.00	Yes	0.42	0.0	0.00	0	0.00	0.00	0.00	-0.14	-3.91	16.04	12.19	-3.85	-7.91
	Aug-21	0	0.00	Yes	0.39	0.0	0.00	0	0.00	0.00	0.00	-0.14	-3.88	16.48	14.68	-1.79	-5.81
	Sep-21	0	0.00	Yes	0.29	0.0	0.00	0	0.00	0.00	0.00	-0.14	-3.85	16.17	7.60	-8.57	-12.55
	Oct-21	0	0.00	Yes	0.19	0.0	0.00	0	0.00	0.00	0.00	-0.14	-3.81	13.55	13.83	0.28	-3.67
	Nov-21	0	0.00	Yes	0.09	0.0	0.00	0	0.00	0.00	0.00	-0.13	-3.77	45.11	49.94	4.83	0.92
	Dec-21	0	0.00	Yes	0.08	0.0	0.00	0	0.00	0.00	0.00	-0.13	-3.73	39.26	37.43	-1.84	-5.70
Totals							0.00	0	0.00	0.00	0.00	-1.69	-47.33	185.28	172.85	-12.43	-61.44
2022	Jan-22	0	0.00	Yes	0.08	0.0	0.00	0	0.00	0.00	0.00	-0.13	-3.70	41.19	42.84	1.65	-2.19
	Feb-22	0	0.00	Yes	0.10	0.0	0.00	0	0.00	0.00	0.00	-0.13	-3.67	41.81	46.34	4.53	0.73
	Mar-22	0	0.00	Yes	0.13	0.0	0.00	0	0.00	0.00	0.00	-0.13	-3.64	41.15	52.48	11.33	7.56
	Apr-22	0	0.00	Yes	0.20	0.0	0.00	0	0.00	0.00	0.00	-0.13	-3.61	15.38	14.04	-1.34	-5.08
	May-22	0	0.00	Yes	0.29	0.0	0.00	0	0.00	0.00	0.00	-0.13	-3.58	22.20	14.78	-7.43	-11.14
	Jun-22	0	0.00	Yes	0.41	0.0	0.00	0	0.00	0.00	0.00	-0.13	-3.55	19.58	8.25	-11.33	-15.00
	Jul-22	0	0.00	Yes	0.42	0.0	0.00	0	0.00	0.00	0.00	-0.13	-3.51	16.21	20.55	4.34	0.71
	Aug-22	0	0.00	Yes	0.39	0.0	0.00	0	0.00	0.00	0.00	-0.12	-3.47	17.42	14.38	-3.04	-6.63
	Sep-22	0	0.00	Yes	0.29	0.0	0.00	0	0.00	0.00	0.00	-0.12	-3.44	15.25	14.03	-1.21	-4.77
	Oct-22	0	0.00	Yes	0.19	0.0	0.00	0	0.00	0.00	0.00	-0.12	-3.41	7.34	8.43	1.09	-2.44
	Nov-22	0	0.00	Yes	0.09	0.0	0.00	0	0.00	0.00	0.00	-0.12	-3.38	10.00	9.54	-0.46	-3.96
	Dec-22	0	0.00	Yes	0.08	0.0	0.00	0	0.00	0.00	0.00	-0.12	-3.35	10.00	9.00	-1.00	-4.46
Totals							0.00	0	0.00	0.00	0.00	-1.50	-42.30	257.53	254.66	-2.87	-46.68
2023	Jan-23	0	0.00	Yes	0.08	0.0	0.00	0	0.00	0.00	0.00	-1.03	-29.32	41.19	37.07	-4.12	-34.48
	Feb-23	0	0.00	Yes	0.10	0.0	0.00	0	0.00	0.00	0.00	-1.03	-29.32	41.81	37.63	-4.18	-34.54
	Mar-23	0	0.00	Yes	0.13	0.0	0.00	0	0.00	0.00	0.00	-1.03	-29.32	41.15	37.04	-4.12	-34.47
	Apr-23	0	0.00	Yes	0.20	0.0	0.00	0	0.00	0.00	0.00	-1.03	-29.32	15.38	13.84	-1.54	-31.90
	May-23	0	0.00	Yes	0.29	0.0	0.00	0	0.00	0.00	0.00	-1.03	-29.32	22.20	19.98	-2.22	-32.58
	Jun-23	0	0.00	Yes	0.41	0.0	0.00	0	0.00	0.00	0.00	-1.03	-29.32	19.58	17.62	-1.96	-32.32
	Jul-23	0	0.00	Yes	0.42	0.0	0.00	0	0.00	0.00	0.00	-1.03	-29.32	16.21	14.59	-1.62	-31.98
	Aug-23	0	0.00	Yes	0.39	0.0	0.00	0	0.00	0.00	0.00	-1.03	-29.32	17.42	15.68	-1.74	-32.10
	Sep-23	0	0.00	Yes	0.29	0.0	0.00	0	0.00	0.00	0.00	-1.03	-29.32	15.25	13.72	-1.52	-31.88
	Oct-23	0	0.00	Yes	0.19	0.0	0.00	0	0.00	0.00	0.00	-1.03	-29.32	7.34	6.60	-0.73	-31.09
	Nov-23	0	0.00	Yes	0.09	0.0	0.00	0	0.00	0.00	0.00	-1.03	-29.32	10.00	9.00	-1.00	-31.36
	Dec-23	0	0.00	Yes	0.08	0.0	0.00	0	0.00	0.00	0.00	-1.03	-29.32	10.00	9.00	-1.00	-31.36
Totals							0.00	0	0.00	0.00	0.00	-12.41	-351.89	257.53	231.77	-25.75	-390.05

Aggregate Industries, Inc.
 Site: Brighton Pit (WDID 0203031)

South Platte River Basin Accounting

Year	Month	Average Dewatering Rate (gpm)	Change in Rate (Yes/No)	Does Dewatering impact the River (Yes/No)	Monthly Net Evaporation (feet)	Exposed Water Surface Area (acres)	Evaporative Losses (acre-feet)	On-site Aggregate Production (tons)	Water Retained in Product (acre-feet)	Water Used For Dust Control (acre-feet)	Total On-Site Consumptive Use (acre-feet)	Lagged Depletion (acre-feet)	Lagged Dewatering Depletions (ac-ft)	Net Depletion (+) or Accretion (-) (ac-ft)
2021	Jan-21	0	No	Yes	0.08	1.0	0.08	0	0.00	0.00	0.08	-0.43	-0.18	-0.61
	Feb-21	0	No	Yes	0.10	1.0	0.10	0	0.00	0.00	0.10	-0.39	-0.18	-0.57
	Mar-21	0	No	Yes	0.12	1.0	0.12	0	0.00	0.00	0.12	-0.38	-0.18	-0.56
	Apr-21	0	No	Yes	0.23	1.0	0.23	0	0.00	0.00	0.23	-0.43	-0.18	-0.61
	May-21	0	No	Yes	0.28	1.0	0.28	0	0.00	0.00	0.28	-0.47	-0.18	-0.65
	Jun-21	0	No	Yes	0.41	1.0	0.41	0	0.00	0.00	0.41	-0.54	-0.18	-0.73
	Jul-21	0	No	Yes	0.45	1.0	0.45	0	0.00	0.00	0.45	-0.59	-0.18	-0.77
	Aug-21	0	No	Yes	0.39	1.0	0.39	0	0.00	0.00	0.39	-0.58	-0.18	-0.76
	Sep-21	0	No	Yes	0.30	1.0	0.30	0	0.00	0.00	0.30	-0.53	-0.18	-0.71
	Oct-21	0	No	Yes	0.20	1.0	0.20	0	0.00	0.00	0.20	-0.45	-0.18	-0.63
	Nov-21	0	No	Yes	0.09	1.0	0.09	0	0.00	0.00	0.09	-0.37	-0.18	-0.55
	Dec-21	0	No	Yes	0.08	1.0	0.08	0	0.00	0.00	0.08	-0.32	-0.18	-0.50
Totals							2.73	0	0.00	0.00	2.73	-5.48	-2.17	-7.65
2022	Jan-22	0	No	Yes	0.08	1.0	0.08	0	0.00	0.00	0.08	-0.31	-0.18	-0.49
	Feb-22	0	No	Yes	0.10	1.0	0.10	0	0.00	0.00	0.10	-0.31	-0.18	-0.49
	Mar-22	0	No	Yes	0.12	1.0	0.12	0	0.00	0.00	0.12	-0.33	-0.18	-0.51
	Apr-22	0	No	Yes	0.23	1.0	0.23	0	0.00	0.00	0.23	-0.38	-0.18	-0.56
	May-22	0	No	Yes	0.28	1.0	0.28	0	0.00	0.00	0.28	-0.43	-0.18	-0.61
	Jun-22	0	No	Yes	0.41	1.0	0.41	0	0.00	0.00	0.41	-0.51	-0.18	-0.69
	Jul-22	0	No	Yes	0.45	1.0	0.45	0	0.00	0.00	0.45	-0.56	-0.18	-0.74
	Aug-22	0	No	Yes	0.39	1.0	0.39	0	0.00	0.00	0.39	-0.56	-0.18	-0.74
	Sep-22	0	No	Yes	0.30	1.0	0.30	0	0.00	0.00	0.30	-0.50	-0.18	-0.68
	Oct-22	0	No	Yes	0.20	1.0	0.20	0	0.00	0.00	0.20	-0.43	-0.18	-0.61
	Nov-22	0	No	Yes	0.09	1.0	0.09	0	0.00	0.00	0.09	-0.35	-0.18	-0.53
	Dec-22	0	No	Yes	0.08	1.0	0.08	0	0.00	0.00	0.08	-0.31	-0.18	-0.49
Totals							2.73	0	0.00	0.00	2.73	-4.98	-2.17	-7.15
2023	Jan-23	0	No	Yes	0.08	1.0	0.08	0	0.00	0.00	0.08	-0.29	-0.18	-0.48
	Feb-23	0	No	Yes	0.10	1.0	0.10	0	0.00	0.00	0.10	-0.30	-0.18	-0.48
	Mar-23	0	No	Yes	0.12	1.0	0.12	0	0.00	0.00	0.12	-0.31	-0.18	-0.49
	Apr-23	0	No	Yes	0.23	1.0	0.23	0	0.00	0.00	0.23	-0.37	-0.18	-0.55
	May-23	0	No	Yes	0.28	1.0	0.28	0	0.00	0.00	0.28	-0.42	-0.18	-0.60
	Jun-23	0	No	Yes	0.41	1.0	0.41	0	0.00	0.00	0.41	-0.50	-0.18	-0.68
	Jul-23	0	No	Yes	0.45	1.0	0.45	0	0.00	0.00	0.45	-0.55	-0.18	-0.73
	Aug-23	0	No	Yes	0.39	1.0	0.39	0	0.00	0.00	0.39	-0.55	-0.18	-0.73
	Sep-23	0	No	Yes	0.30	1.0	0.30	0	0.00	0.00	0.30	-0.49	-0.18	-0.67
	Oct-23	0	No	Yes	0.20	1.0	0.20	0	0.00	0.00	0.20	-0.42	-0.18	-0.60
	Nov-23	0	No	Yes	0.09	1.0	0.09	0	0.00	0.00	0.09	-0.34	-0.18	-0.52
	Dec-23	0	No	Yes	0.08	1.0	0.08	0	0.00	0.00	0.08	-0.30	-0.18	-0.48
Totals							2.73	0	0.00	0.00	2.73	-4.85	-2.17	-7.01

Aggregate Industries, Inc.

Site: Tucson South Pit (WDID 0203032)

South Platte River Basin Accounting

Year	Month	Average Dewatering Rate (gpm)	Pumped for Dewatering (ac-ft)	Does Dewatering impact the River (Yes/No)	Monthly Net Evap (ft)	Exposed Surface Area (ac)	Evaporative Losses (ac-ft)	On-site Aggregate Production (tons)	Water Retained in Product (ac-ft)	Dust Control/Slurry Wall (ac-ft)	Total On-Site Consumptive Use (ac-ft)	Lagged Depletion (ac-ft)	Lagged Dewatering Depletions (ac-ft)	Net Depletion (+) or Accretion (-) (ac-ft)
2021	Jan-21	0	0.00	Yes	0.08	3.0	0.24	0	0.00	0.00	0.24	-0.49	0.00	-0.49
	Feb-21	0	0.00	Yes	0.10	3.0	0.30	0	0.00	0.00	0.30	-0.46	0.00	-0.46
	Mar-21	0	0.00	Yes	0.12	3.0	0.37	0	0.00	0.00	0.37	-0.45	0.00	-0.45
	Apr-21	0	0.00	Yes	0.23	3.0	0.69	0	0.00	0.00	0.69	-0.51	0.00	-0.51
	May-21	0	0.00	Yes	0.28	3.0	0.84	0	0.00	0.00	0.84	-0.61	0.00	-0.61
	Jun-21	0	0.00	Yes	0.41	3.0	1.24	0	0.00	0.00	1.24	-0.75	0.00	-0.75
	Jul-21	0	0.00	Yes	0.45	3.0	1.34	0	0.00	0.00	1.34	-0.91	0.00	-0.91
	Aug-21	0	0.00	Yes	0.39	3.0	1.18	0	0.00	0.00	1.18	-0.98	0.00	-0.98
	Sep-21	0	0.00	Yes	0.30	3.0	0.90	0	0.00	0.00	0.90	-0.94	0.00	-0.94
	Oct-21	0	0.00	Yes	0.20	3.0	0.60	0	0.00	0.61	1.21	-0.95	0.00	-0.95
	Nov-21	0	0.00	Yes	0.09	3.0	0.27	0	0.00	2.23	2.50	-1.26	0.00	-1.26
	Dec-21	0	0.00	Yes	0.08	3.0	0.23	0	0.00	19.21	19.44	-4.71	0.00	-4.71
Totals							8.20	0	0.00	22.05	30.26	-13.01	0.00	-13.01
2022	Jan-22	0	0.00	Yes	0.08	3.0	0.24	0	0.00	0.04	0.28	-5.97	0.00	-5.97
	Feb-22	0	0.00	Yes	0.10	3.0	0.30	0	0.00	0.00	0.30	-2.92	0.00	-2.92
	Mar-22	0	0.00	Yes	0.12	3.0	0.37	0	0.00	0.00	0.37	-2.08	0.00	-2.08
	Apr-22	0	0.00	Yes	0.23	3.0	0.69	0	0.00	0.00	0.69	-1.79	0.00	-1.79
	May-22	0	0.00	Yes	0.28	3.0	0.84	0	0.00	0.00	0.84	-1.66	0.00	-1.66
	Jun-22	0	0.00	Yes	0.41	3.0	1.24	0	0.00	0.00	1.24	-1.63	0.00	-1.63
	Jul-22	0	0.00	Yes	0.45	3.0	1.34	0	0.00	0.11	1.45	-1.66	0.00	-1.66
	Aug-22	0	0.00	Yes	0.39	3.0	1.18	0	0.00	0.30	1.48	-1.67	0.00	-1.67
	Sep-22	0	0.00	Yes	0.30	3.0	0.90	0	0.00	0.25	1.14	-1.59	0.00	-1.59
	Oct-22	0	0.00	Yes	0.20	3.0	0.60	0	0.00	0.14	0.74	-1.40	0.00	-1.40
	Nov-22	0	0.00	Yes	0.09	3.0	0.27	0	0.00	0.00	0.27	-1.15	0.00	-1.15
	Dec-22	0	0.00	Yes	0.08	3.0	0.23	160,000	4.71	0.07	5.01	-1.78	0.00	-1.78
Totals							8.20	160,000	4.71	0.90	13.81	-25.31	0.00	-25.31
2023	Jan-23	0	0.00	Yes	0.08	3.0	0.24	84,889	1.25	0.06	1.55	-2.31	0.00	-2.31
	Feb-23	0	0.00	Yes	0.10	3.0	0.30	79,179	1.17	0.07	1.54	-1.84	0.00	-1.84
	Mar-23	0	0.00	Yes	0.12	3.0	0.37	113,513	1.67	0.18	2.23	-1.85	0.00	-1.85
	Apr-23	0	0.00	Yes	0.23	3.0	0.69	115,797	1.70	0.29	2.69	-2.07	0.00	-2.07
	May-23	0	0.00	Yes	0.28	3.0	0.84	99,772	1.47	0.44	2.75	-2.26	0.00	-2.26
	Jun-23	0	0.00	Yes	0.41	3.0	1.24	111,868	1.65	0.44	3.32	-2.47	0.00	-2.47
	Jul-23	0	0.00	Yes	0.45	3.0	1.34	101,545	1.49	0.44	3.28	-2.68	0.00	-2.68
	Aug-23	0	0.00	Yes	0.39	3.0	1.18	131,459	1.93	0.44	3.56	-2.84	0.00	-2.84
	Sep-23	0	0.00	Yes	0.30	3.0	0.90	115,665	1.70	0.44	3.04	-2.90	0.00	-2.90
	Oct-23	0	0.00	Yes	0.20	3.0	0.60	132,431	1.95	0.29	2.84	-2.83	0.00	-2.83
	Nov-23	0	0.00	Yes	0.09	3.0	0.27	60,077	0.88	0.29	1.45	-2.54	0.00	-2.54
	Dec-23	0	0.00	Yes	0.08	3.0	0.23	253,804	3.73	0.12	4.08	-2.64	0.00	-2.64
Totals							8.20	1,400,000	20.60	3.53	32.34	-29.25	0.00	-29.25

Aggregate Industries, Inc.
Site: Wattenberg Pit (WDID 0203034)

South Platte River Basin Accounting

Year	Month	Average Dewatering Rate (gpm)	Net Pumped for Dewatering (ac-ft)	Does Dewatering impact the River (Yes/No)	Monthly Net Evap (ft)	Exposed Surface Area (ac)	Evaporative Losses (ac-ft)	On-site Aggregate Production (tons)	Water Retained in Product (ac-ft)	Dust Control (ac-ft)	Total On-Site Consumptive Use (ac-ft)	Lagged Depletion (ac-ft)	Lagged Dewatering Depletions (ac-ft)	Net Depletion (+) or Accretion (-) (ac-ft)
2021	Jan-21	0	0.00	No	0.09	37.0	3.15	0	0.00	0.07	3.22	-2.39	-48.11	-2.39
	Feb-21	0	0.00	No	0.11	37.0	4.04	0	0.00	0.10	4.14	-3.20	-38.42	-3.20
	Mar-21	192	26.34	No	0.14	37.0	5.03	0	0.00	0.13	5.16	-3.89	-40.62	-3.89
	Apr-21	839	111.30	No	0.24	37.0	8.88	0	0.00	0.20	9.08	-5.50	-69.41	-5.50
	May-21	190	26.05	No	0.32	37.0	11.84	0	0.00	0.23	12.07	-7.66	-65.87	-7.66
	Jun-21	985	130.58	No	0.45	37.0	16.50	0	0.00	0.23	16.73	-10.37	-80.02	-10.37
	Jul-21	945	129.41	No	0.47	37.0	17.33	0	0.00	0.23	17.56	-12.47	-103.66	-12.47
	Aug-21	148	20.28	No	0.41	37.0	15.26	0	0.00	0.23	15.49	-12.86	-76.85	-12.86
	Sep-21	522	69.27	No	0.31	37.0	11.53	0	0.00	0.23	11.76	-11.76	-64.79	-11.76
	Oct-21	383	52.46	No	0.21	37.0	7.86	0	0.00	0.13	7.99	-9.85	-65.61	-9.85
	Nov-21	294	39.03	No	0.10	37.0	3.73	0	0.00	0.13	3.86	-7.48	-57.44	-7.48
	Dec-21	99	13.51	No	0.09	37.0	3.24	0	0.00	0.07	3.31	-5.88	-44.34	-5.88
Totals							108.38	0	0.00	1.98	110.36	-93.31	-755.12	-93.31
2022	Jan-22	433	59.32	No	0.09	37.0	3.15	0	0.00	0.00	3.15	-5.18	-48.91	-5.18
	Feb-22	0	0.00	No	0.11	37.0	4.04	0	0.00	0.00	4.04	-5.08	-39.73	-5.08
	Mar-22	0	0.00	No	0.14	37.0	5.03	0	0.00	0.00	5.03	-5.39	-24.88	-5.39
	Apr-22	507	67.21	No	0.24	37.0	8.88	0	0.00	0.00	8.88	-6.73	-40.35	-6.73
	May-22	356	48.76	No	0.32	37.0	11.84	0	0.00	0.00	11.84	-8.69	-50.39	-8.69
	Jun-22	343	45.46	No	0.45	37.0	16.50	0	0.00	0.00	16.50	-11.22	-48.11	-11.22
	Jul-22	2,330	319.19	No	0.47	37.0	17.33	0	0.00	0.00	17.33	-13.19	-130.45	-13.19
	Aug-22	2,688	368.31	No	0.41	37.0	15.26	0	0.00	0.00	15.26	-13.46	-221.10	-13.46
	Sep-22	2,604	345.26	No	0.31	37.0	11.53	0	0.00	0.00	11.53	-12.26	-252.46	-12.26
	Oct-22	1,627	222.85	No	0.21	37.0	7.86	0	0.00	0.00	7.86	-10.28	-227.30	-10.28
	Nov-22	437	57.95	No	0.10	37.0	3.73	0	0.00	0.00	3.73	-7.86	-153.75	-7.86
	Dec-22	0	0.00	No	0.09	37.0	3.24	0	0.00	0.00	3.24	-6.22	-88.04	-6.22
Totals							108.38	0	0.00	0.00	108.38	-105.58	-1325.49	-105.58
2023	Jan-23	0	0.00	No	0.09	37.0	3.15	0	0.00	0.00	3.15	-5.51	-58.23	-5.51
	Feb-23	0	0.00	No	0.11	37.0	4.04	0	0.00	0.00	4.04	-5.39	-46.47	-5.39
	Mar-23	0	0.00	No	0.14	37.0	5.03	0	0.00	0.00	5.03	-5.66	-39.37	-5.66
	Apr-23	0	0.00	No	0.24	37.0	8.88	0	0.00	0.00	8.88	-6.97	-34.08	-6.97
	May-23	0	0.00	No	0.32	37.0	11.84	0	0.00	0.00	11.84	-8.89	-29.75	-8.89
	Jun-23	0	0.00	No	0.45	37.0	16.50	0	0.00	0.00	16.50	-11.41	-26.03	-11.41
	Jul-23	0	0.00	No	0.47	37.0	17.33	0	0.00	0.00	17.33	-13.35	-22.82	-13.35
	Aug-23	0	0.00	No	0.41	37.0	15.26	0	0.00	0.00	15.26	-13.60	-19.97	-13.60
	Sep-23	0	0.00	No	0.31	37.0	11.53	0	0.00	0.00	11.53	-12.38	-17.50	-12.38
	Oct-23	0	0.00	No	0.21	37.0	7.86	0	0.00	0.00	7.86	-10.39	-15.32	-10.39
	Nov-23	0	0.00	No	0.10	37.0	3.73	0	0.00	0.00	3.73	-7.96	-13.41	-7.96
	Dec-23	0	0.00	No	0.09	37.0	3.24	0	0.00	0.00	3.24	-6.30	-11.72	-6.30
Totals							108.38	0	0.00	0.00	108.38	-107.81	-334.68	-107.81

Aggregate Industries, Inc.

Site: Platte Valley Pit (WDID 0203035)

South Platte River Basin Accounting

Year	Month	Monthly Net Evaporation (feet)	Exposed Water Surface Area (acres)	Evaporative Losses (acre-feet)	On-site Aggregate Production (tons)	Water Retained in Product (acre-feet)	Dust Control (acre-feet)	Concrete Batching (acre-feet)	Total On-Site Consumptive Use (acre-feet)	Lagged Depletion (acre-feet)
2021	Jan-21	0.08	63.8	4.91	107,940	1.59	0.12	0.37	6.99	-11.57
	Feb-21	0.10	63.8	6.29	75,498	1.11	0.28	0.43	8.11	-10.98
	Mar-21	0.12	63.8	7.59	101,503	1.49	0.29	0.32	9.70	-11.33
	Apr-21	0.22	63.8	14.29	103,697	1.53	1.14	0.57	17.53	-14.32
	May-21	0.27	63.8	17.27	83,133	1.22	0.80	0.36	19.64	-17.05
	Jun-21	0.40	63.8	25.53	74,109	1.09	2.05	0.44	29.12	-21.56
	Jul-21	0.43	63.8	27.73	77,242	1.14	2.32	0.29	31.47	-25.34
	Aug-21	0.38	63.8	24.45	58,453	0.86	2.59	0.57	28.47	-25.83
	Sep-21	0.29	63.8	18.57	103,464	1.52	2.53	0.64	23.27	-23.86
	Oct-21	0.19	63.8	12.39	97,256	1.43	1.87	0.64	16.33	-20.19
	Nov-21	0.09	63.8	5.47	88,436	1.30	0.91	0.49	8.17	-15.18
	Dec-21	0.07	63.8	4.65	95,597	1.41	0.77	0.37	7.20	-12.09
Totals				169.15	1,066,328	15.69	15.68	5.48	206.01	-209.31
2022	Jan-22	0.08	63.8	4.91	66,893	0.98	0.00	0.30	6.20	-10.55
	Feb-22	0.10	63.8	6.29	62,394	0.92	0.00	0.16	7.36	-10.10
	Mar-22	0.12	63.8	7.59	89,449	1.32	0.34	0.65	9.90	-10.84
	Apr-22	0.22	63.8	14.29	91,249	1.34	1.94	1.07	18.64	-14.44
	May-22	0.27	63.8	17.27	78,621	1.16	2.47	1.62	22.51	-18.15
	Jun-22	0.40	63.8	25.53	88,153	1.30	3.45	0.87	31.15	-22.96
	Jul-22	0.43	63.8	27.73	80,018	1.18	3.89	0.72	33.51	-26.73
	Aug-22	0.38	63.8	24.45	103,591	1.52	2.70	0.70	29.38	-26.88
	Sep-22	0.29	63.8	18.57	91,145	1.34	2.65	0.71	23.28	-24.34
	Oct-22	0.19	63.8	12.39	104,357	1.54	1.93	0.74	16.60	-20.50
	Nov-22	0.09	63.8	5.47	47,341	0.70	0.38	0.62	7.17	-15.02
	Dec-22	0.07	63.8	4.65	200,000	2.94	0.25	0.39	8.24	-12.34
Totals				169.15	1,103,211	16.23	20.00	8.55	213.94	-212.86
2023	Jan-23	0.08	63.8	4.91	84,889	1.25	0.25	0.40	6.81	-11.08
	Feb-23	0.10	63.8	6.29	79,179	1.17	0.25	0.20	7.90	-10.59
	Mar-23	0.12	63.8	7.59	113,513	1.67	0.40	0.70	10.36	-11.29
	Apr-23	0.22	63.8	14.29	115,797	1.70	2.00	1.10	19.10	-14.88
	May-23	0.27	63.8	17.27	99,772	1.47	2.50	1.70	22.94	-18.58
	Jun-23	0.40	63.8	25.53	111,868	1.65	3.50	0.90	31.58	-23.37
	Jul-23	0.43	63.8	27.73	101,545	1.49	3.90	0.80	33.92	-27.15
	Aug-23	0.38	63.8	24.45	131,459	1.93	2.80	0.80	29.99	-27.36
	Sep-23	0.29	63.8	18.57	115,665	1.70	2.70	0.80	23.77	-24.84
	Oct-23	0.19	63.8	12.39	132,431	1.95	2.00	0.80	17.14	-20.99
	Nov-23	0.09	63.8	5.47	60,077	0.88	0.40	0.70	7.45	-15.44
	Dec-23	0.07	63.8	4.65	253,804	3.73	0.30	0.40	9.09	-12.89
Totals				169.15	1,400,000	20.60	21.00	9.30	220.05	-218.47

Appendix B

Water Leases

- Bucklen Lease of Excess Augmentation Credits
- Centennial W&S District Lease Confirmation Letter

Lease of Excess Augmentation Credits

This water lease is by and between Aggregate Industries-WCR, Inc. ("AI") and Bucklen Equipment Co., Inc. ("Bucklen"), sometimes collectively referred to as "the Parties".

WHEREAS Bucklen operates a gravel pit Substitute Water Supply Plan (SWSP) for the Bucklen Pit approved by the Division of Water Resources in accordance with C.R.S. §37-90-137(11); and

WHEREAS under conservative assumptions the 2023 SWSP approval for the Bucklen Pit SWSP projects that the Bucklen Pit SWSP will have excess augmentation credit during the 2023 plan approval period; and

WHEREAS AI operates a combined substitute supply plan (CoSSP) for its various gravel pits approved by the Division of Water Resources in accordance with C.R.S. §37-90-137(11); and

WHEREAS the AI CoSSP may require additional augmentation credit during the 2023 irrigation season;

NOW THEREFORE, in consideration of the foregoing, it is agreed as follows:

1. Bucklen will lease to AI as needed any excess augmentation credit it has available during the 2023 irrigation season according to the Bucklen Pit SWSP monthly accounting submitted to the Division of Water Resources. The amount of excess augmentation credit that will be available during the 2023 irrigation season is currently estimated to equal the values below:


Month	Apr-23	May-23	Jun-23	Jul-23	Aug-23	Sep-23	Oct-23	Total
Estimated Excess [ac-ft]	5.12	12.89	11.61	12.08	12.09	10.37	6.80	70.96


2. The water leased to AI is for the exclusive use by AI and shall not be leased or conveyed to others except by written permission from Bucklen.
3. The cost of the lease water shall be \$100 (ONE HUNDRED DOLLARS) per acre-foot. The volume of water leased by AI each month will be reported to Bucklen within thirty days of the close of that month. Payment will be made by AI within thirty days following the end of the 2023 irrigation season for all water leased. This payment shall be nonrefundable and is not contingent upon AI's actual usage of the water.

DATED this 8 day of Dec, 2022.

Aggregate Industries-WCR, Inc.

Bucklen Equipment Company, Inc.

Signature: 

Signature: 

Date: 12/9/2022

Date: 12-8-22



CENTENNIAL
WATER AND SANITATION DISTRICT

December 27, 2022

Jared Dains
Applegate Group, Inc.
1499 West 120th Avenue, Suite 200
Denver, CO 80234

RE: Aggregate Industries Lease request for 2023

Dear Mr. Dains,

I am writing to confirm that Centennial W&S District will plan to provide 14 ac-ft in January, and 16 ac-ft in February, as per your request on behalf of Aggregate Industries. Please let me know of any changes to your request.

Please contact me with any concerns.

Sincerely,

Swithin Dick

Water Resources Administrator

Appendix C

Consumptive Use Analysis for the CAMAS Fulton Ditch Shares

Memorandum

Date:	December 29, 2022	AG Job No.: 06-103
To:	File	
From:	Jared Dains, P.E.	
Subject:	Historical Consumptive Use Analysis on Aggregate's 22 Fulton Ditch Shares Acquired from CAMAS Colorado, Inc.	

The purpose of this memorandum is to summarize the historical consumptive use analysis conducted on Aggregate Industries' 22 Fulton Ditch shares which were acquired from CAMAS Colorado, Inc. (CAMAS) on April 12, 2002. The consumptive use evaluation was conducted for the CAMAS Parcel with a monthly timestep using the IDSCU tool, and a summary of the results are contained in the attached Table 1. To the extent applicable, assumptions from prior decreed changes of the Fulton Ditch were adopted in the analysis. Per Table 1, the estimated average annual consumptive use for the 22 shares is 33.50 acre-feet, or roughly 1.52 acre-feet per share.

Share History

The history of the shares is summarized in the attached Lineage of Stock Certificates flowchart. The 22 shares currently owned by Aggregate Industries as part of Certificate No. 3653 were previously held by CAMAS under Certificate No. 3535. These 22 shares stem from a prior block of 45 Fulton Irrigating Ditch Company shares purchased by Adams Aggregate in 1971, which were historically used to irrigate alfalfa and pasture grass on a parcel in Sections 14, 23, and 24, Township 1 South, Range 67 West. This parcel, referred to herein as the "CAMAS Parcel", is shown in Figure 1.

Study Period

At this time little is known about the use of the shares after Adams Aggregate's acquisition in 1971. Because the Fulton Ditch is a mutual ditch company, it is likely that these shares were used somewhere within the ditch system, perhaps even continuing to be used on the CAMAS parcel. However, given the lack of certainty, a study period of 1919 to 1971 was selected. This 53-year study period was selected based on the availability of climate data, diversion records, and reliable information on share use location; it encompasses wet, dry, and average years and therefore provides a representative estimate of the historical consumptive use of the shares.

Diversions and Ditch Loss

For the period prior to 1950, daily Fulton Ditch diversions from District 2 Water Commissioner field books were digitized and summarized on a monthly basis. For the period from 1950 onwards, Fulton Ditch diversions coded as "natural streamflow" to "irrigation" uses were obtained from CDSS. Total River Diversions are shown in the attached Table 2. There are 7,185 shares of stock in the Fulton Irrigating Ditch Company; diversions to the CAMAS Parcel were pro-rated according to the 22 shares currently held by Aggregate Industries, and are shown in the attached Table 3.

Most decreed change cases involving the Fulton Ditch have adopted a ditch loss estimate of 20%, which was applied in this analysis. The combined ditch loss for both parcels is shown in the attached Table 4. Farm headgate delivery to the parcels was defined as river diversions less ditch loss, and is shown in the attached Table 5.

Irrigation Efficiency

Maximum irrigation efficiency is based on a variety of factors including application method, farm management, and soil types. For the parcels in question, aerial photographs indicate that flood irrigation was the primary means of irrigation application. Although a 65% maximum potential application efficiency is possible to achieve for the irrigation methods employed on the parcel, for the purposes of this estimate we assumed a lower maximum application efficiency of 50%. The water available for the parcel is shown in the attached Table 6.

Irrigated Acreage

Colorado Department of Water Resources (DWR) historical crop irrigation maps for the years 1956 and 1976 were reviewed to determine irrigated acreage and crop type. Additionally, aerial photographs of the area for the years 1953, 1963, 1964, and 1971 were acquired from the USGS Earth Explorer website and historicaerials.com and analyzed to determine irrigated area on the parcels not accounted for in DWR's historical irrigation maps. It was determined that the acreage remained constant between 1953 and 1971, and it was assumed that the total irrigated acreage remained constant throughout the study period.

As noted in the share history section, only 22 of the original 45 Adams Aggregate shares are held by Aggregate Industries, and accordingly, inputs into the consumptive use analysis reflect the proportional acreage associated with the Aggregate Industries shares being 48.9% of the total. This ratio was denoted the "irrigated area claimed", or IAC. The IAC was applied to the measured irrigated acreage on the parcel to pro-rate the acreage for the purpose of determining how much of the acreage was irrigated solely by Aggregate Industries' water rights and therefore how much acreage should be modeled in the analysis.

Years	Measured Irrigated Area [ac]	Irrigated Area Claimed [%]	Modeled Irrigated Area [ac]
1919 - 1971	81.9	48.9%	40.0

A review of soil survey information revealed that the parcel is underlain by loam soils. Therefore, a loam soil with an average water holding capacity of 1.5 inches per foot was assumed.

Crop Irrigation Requirement

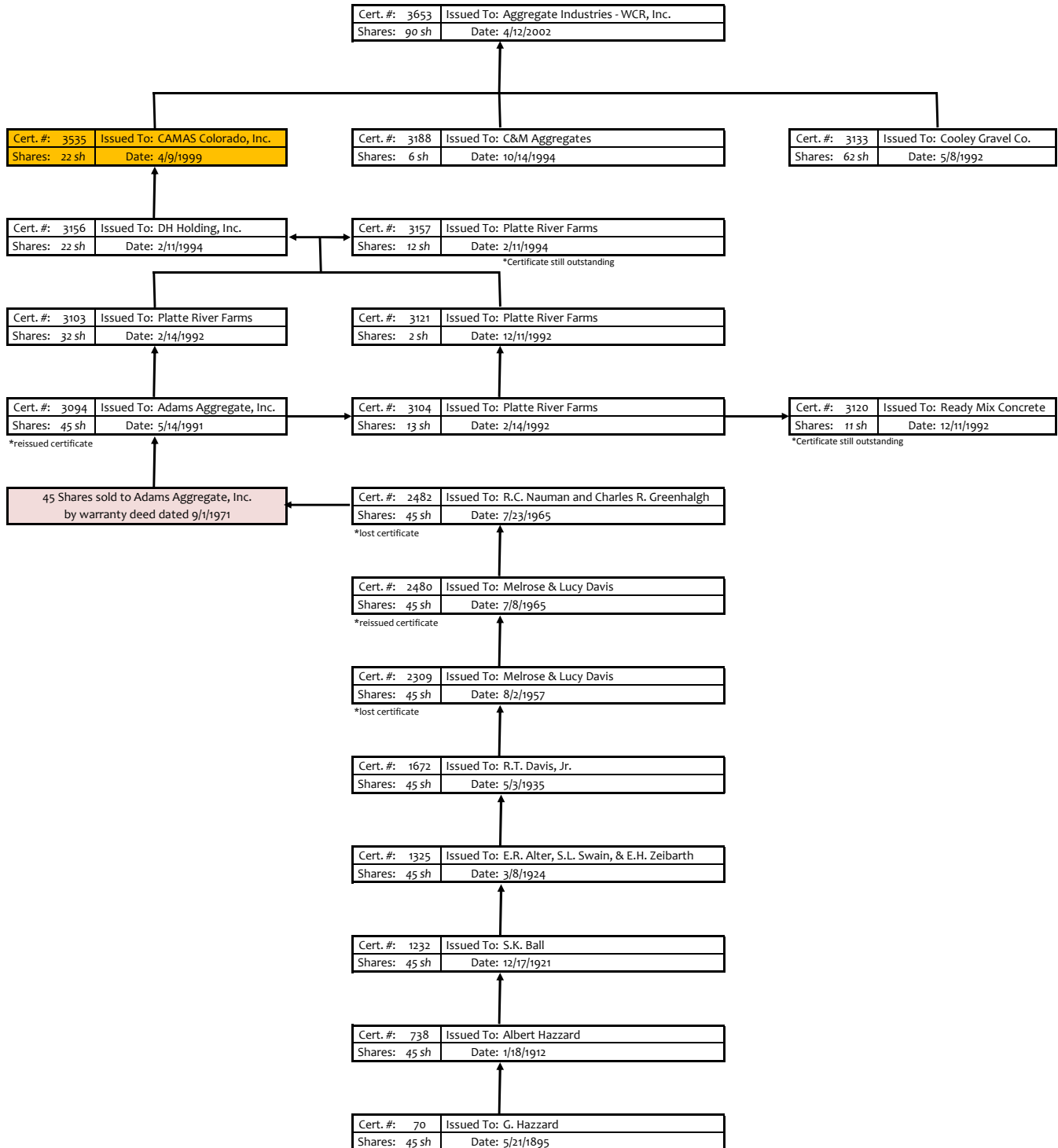
DWR's historical crop irrigation maps for the years 1956 and 1976 specified alfalfa and pasture grass were grown on the parcel. For the additional irrigated acreage identified in historic aerial analysis but not delineated by the DWR, pasture grass was assumed to be grown to obtain a more conservative estimate of consumptive use.

Weather data was acquired from the FORT LUPTON 2 SE and BRIGHTON 1 NE weather stations and combined as neither station provided climate data for the entire period of record. The modified Blaney-Criddle method was used to estimate the crop irrigation requirement using calibrated coefficients developed by Deere & Ault Consultants, Inc. and accepted by the Water Court in the change of Fulton Ditch shares in Case No. 03CW084, as well as other decreed change cases. The crop irrigation requirement has already deducted for precipitation that meets some of the crop demand. The crop irrigation requirement for the parcel is shown in the attached Table 7.

Consumptive Use

The consumptive use associated with crop irrigation was limited to the lesser of the water available or the crop irrigation requirement. Additional consumptive use resulted from the delivery of excess available water to the soil moisture reservoir when space was available. The monthly consumptive use determined in this analysis is shown in Table 8.

Lineage of Stock Certificates
22 Shares in The Fulton Irrigating Ditch Company



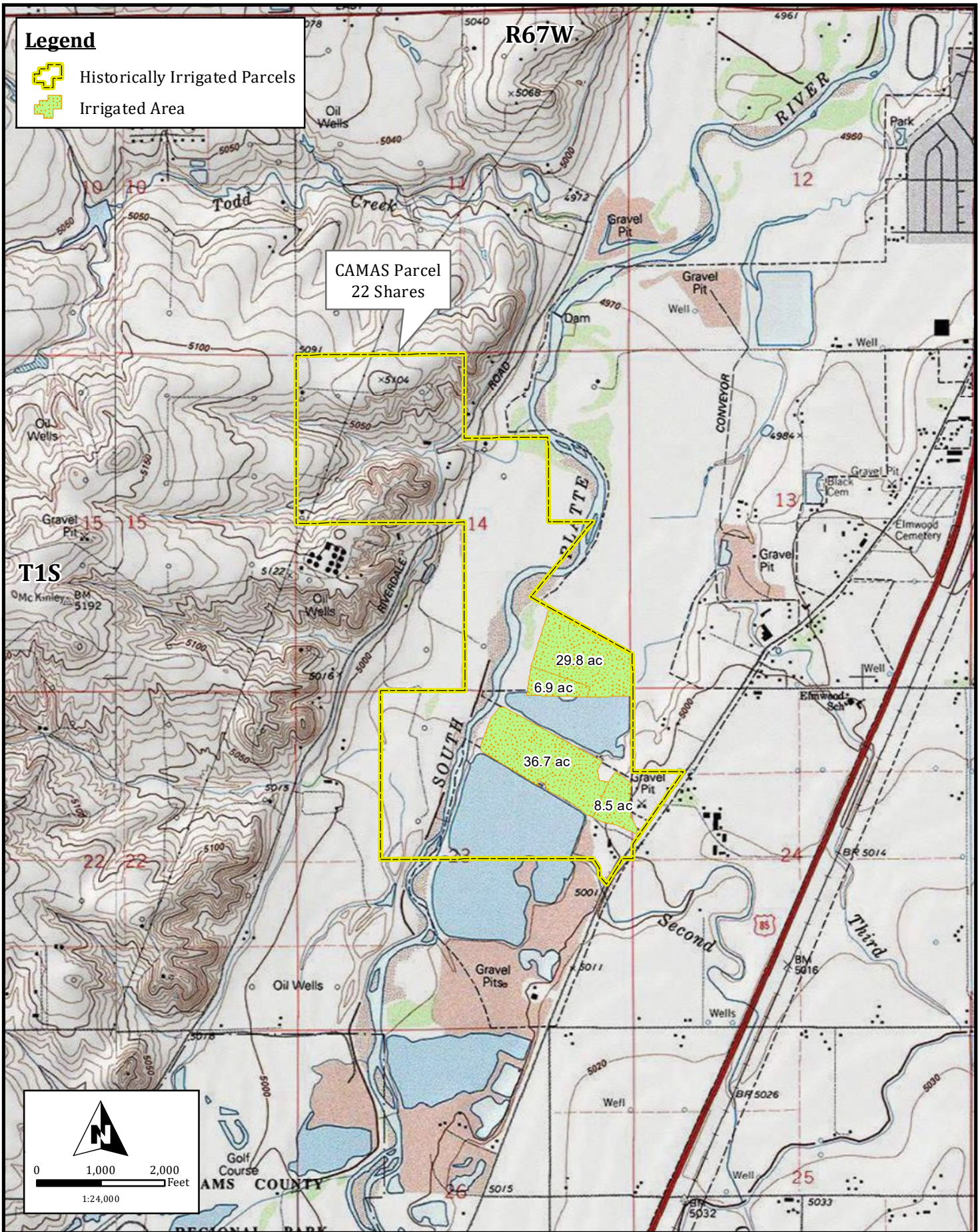
Legend



Historically Irrigated Parcels



Irrigated Area



**Applegate
Group, Inc.**

Water Resource Advisors for the West

1490 West 121st Ave., Ste 100

Phone: (303) 452-6611

Denver, CO 80234-2728

Fax: (303) 452-2759

www.ApplegateGroup.com

e-mail: info@applegategroup.com

CAMAS FULTON DITCH SHARES

Historically Irrigated Parcel Location

Date: 29 Dec 2022

Job #: 06-103

Drawn By: JMD

Figure:

1

Of:

1

Table 1
CAMAS Fulton Ditch Shares Consumptive Use Analysis
Analysis Summary

No. of shares = 22

All values in ac-ft unless noted otherwise

Month	Total River Diversions (A)	Pro-Rata River Diversion (B)	Ditch Loss (C)	Farm Headgate Delivery (D)	Water Available (E)	Crop Irrigation Requirement (F)	Consumptive Use (G)
January	0	0.00	0.00	0.00	0.00	0.00	0.00
February	0	0.00	0.00	0.00	0.00	0.00	0.00
March	113	0.35	0.07	0.28	0.14	0.11	0.14
April	776	2.38	0.48	1.90	0.95	3.11	0.95
May	3,837	11.75	2.35	9.40	4.70	7.07	4.66
June	5,506	16.86	3.37	13.49	6.74	13.95	6.74
July	6,002	18.38	3.68	14.70	7.35	18.94	7.35
August	5,333	16.33	3.27	13.06	6.53	15.99	6.53
September	3,747	11.47	2.29	9.18	4.59	8.98	4.59
October	1,823	5.58	1.12	4.47	2.23	3.84	2.23
November	242	0.74	0.15	0.59	0.30	0.17	0.30
December	3	0.01	0.00	0.01	0.00	0.00	0.00
Total	27,382	83.84	16.77	67.07	33.54	72.16	33.50

Notes:

(A) Total river diversions; see Table 2

(B) River diversions pro-rated by number of shares; see Table 3

(C) Ditch loss assumed to be 20%; see Table 4

(D) = (B) - (C); see Table 5

(E) Maximum irrigation efficiency assumed to be 50%; see Table 6

(F) Crop irrigation requirement per IDSCU; see Table 7

(G) Consumptive use includes crop consumption and delivery to soil moisture reservoir; see Table 8

Consumptive Use = 1.52 ac-ft / share

Table 2
CAMAS Fulton Ditch Shares Consumptive Use Analysis
Total Fulton Ditch River Diversions

Year	Jan	Feb	Mar	Apr	May	Jun	Jul	Aug	Sep	Oct	Nov	Dec	Total
1919	0	0	0	1,071	7,747	7,688	7,267	6,787	5,558	0	0	0	36,118
1920	0	0	0	0	4,225	9,933	7,367	9,576	4,998	4,245	0	0	40,344
1921	0	0	0	228	6,617	7,811	15,130	12,355	8,852	1,980	0	0	52,973
1922	0	0	0	1,230	5,546	5,494	5,431	4,592	4,721	317	0	0	27,331
1923	0	0	0	367	4,374	3,094	6,758	4,939	4,951	0	0	0	24,483
1924	0	0	0	536	3,207	6,301	7,507	4,919	4,165	912	0	0	27,547
1925	0	0	0	893	3,499	4,860	4,072	5,689	4,538	1,309	0	0	24,860
1926	0	0	0	557	3,931	5,673	5,036	6,248	4,927	2,656	0	0	29,028
1927	0	0	0	171	4,130	5,308	5,115	2,945	4,308	2,263	0	0	24,240
1928	0	0	0	1,319	4,114	5,371	6,714	4,415	4,201	1,932	0	0	28,066
1929	0	0	0	0	3,043	5,117	5,740	7,591	4,435	1,646	0	0	27,572
1930	0	0	0	1,200	5,877	7,357	6,081	6,135	5,254	595	0	0	32,499
1931	0	0	0	813	4,217	6,510	5,486	4,689	1,880	3,927	1,644	0	29,166
1932	0	0	0	2,267	5,716	5,905	5,399	4,850	1,617	3,402	466	0	29,622
1933	0	0	2,214	1,204	1,906	9,410	6,803	4,683	2,694	2,622	365	0	31,901
1934	0	0	0	1,734	5,544	4,439	944	2,632	609	2,005	3,154	0	21,061
1935	0	0	2,983	1,043	1,757	4,314	5,974	6,046	3,263	1,710	0	0	27,090
1936	0	0	789	2,588	5,460	6,196	5,851	7,751	4,284	430	0	0	33,349
1937	0	0	0	696	5,010	5,264	5,946	3,451	2,337	4,625	1,851	0	29,180
1938	0	0	0	785	1,991	7,091	7,509	5,847	1,995	2,864	147	0	28,229
1939	0	0	0	206	8,329	5,958	3,673	1,833	367	2,580	3,878	175	26,999
1940	0	0	0	2,438	4,965	5,006	3,727	726	3,189	766	0	0	20,817
1941	0	0	0	407	6,450	8,102	6,222	5,492	4,699	561	0	0	31,933
1942	0	0	0	0	0	5,161	7,983	6,492	4,760	1,702	0	0	26,098
1943	0	0	0	1,148	3,185	7,908	5,657	4,919	4,340	4,001	0	0	31,158
1944	0	0	0	0	3,324	8,456	8,178	4,919	2,876	4,284	0	0	32,037
1945	0	0	0	0	2,604	4,003	7,323	5,550	5,460	490	0	0	25,430
1946	0	0	0	2,523	3,408	5,030	5,123	4,873	4,790	793	0	0	26,540
1947	0	0	0	242	2,416	2,995	8,862	9,160	5,421	1,835	0	0	30,931
1948	0	0	0	776	4,772	5,101	6,885	4,921	4,760	1,684	0	0	28,899
1949	0	0	0	474	1,993	3,205	9,098	5,702	4,992	875	0	0	26,339
1950	0	0	0	1,412	2,555	5,302	4,919	3,455	3,467	2,858	0	0	23,969
1951	0	0	0	0	5,062	7,028	7,293	4,542	4,314	847	0	0	29,086
1952	0	0	0	135	3,225	9,315	6,240	5,038	5,058	3,640	0	0	32,650
1953	0	0	0	0	4,140	7,884	6,286	5,599	3,610	3,402	0	0	30,921
1954	0	0	0	67	4,864	3,660	3,429	2,497	661	3,017	0	0	18,195
1955	0	0	0	107	3,743	4,852	2,297	4,576	3,769	1,541	0	0	20,884
1956	0	0	0	1,283	6,155	7,258	3,961	3,929	232	1,529	0	0	24,347
1957	0	0	0	0	480	4,058	7,333	5,978	4,286	1,688	0	0	23,824
1958	0	0	0	56	1,180	6,034	5,024	4,267	3,485	2,408	0	0	22,453
1959	0	0	0	0	2,331	7,188	5,262	4,989	3,372	10	0	0	23,151
1960	0	0	0	1,277	2,035	5,445	6,546	4,580	4,120	1,605	0	0	25,607
1961	0	0	0	325	1,989	3,673	4,909	7,232	1,922	0	0	0	20,051
1962	0	0	0	1,018	5,707	5,332	6,732	4,891	4,659	3,277	0	0	31,615
1963	0	0	0	1,242	2,374	4,102	2,634	4,409	3,898	3,554	0	0	22,213
1964	0	0	0	855	4,578	2,795	4,919	5,534	3,652	3,808	1,345	0	27,485
1965	0	0	0	1,234	3,794	264	5,187	4,741	3,205	173	0	0	18,597
1966	0	0	0	1,710	4,701	4,612	4,457	4,879	3,830	1,285	0	0	25,474
1967	0	0	0	1,117	1,783	280	2,416	4,919	3,735	1,265	0	0	15,515
1968	0	0	0	444	4,027	5,669	4,931	6,010	3,896	1,373	0	0	26,349
1969	0	0	0	1,666	2,636	2,406	8,577	6,930	3,435	331	0	0	25,982
1970	0	0	0	0	5,344	3,431	7,220	7,367	2,271	0	0	0	25,633
1971	0	0	0	272	1,287	7,154	8,674	5,560	2,469	0	0	0	25,417
Average	0	0	113	776	3,837	5,506	6,002	5,333	3,747	1,823	242	3	27,382

Table 3

CAMAS Fulton Ditch Shares Consumptive Use Analysis
Pro-Rata Fulton Ditch River Diversions

22 shares
7185 total shares

Year	Jan	Feb	Mar	Apr	May	Jun	Jul	Aug	Sep	Oct	Nov	Dec	Total
1919	0	0	0	3.28	23.72	23.54	22.25	20.78	17.02	0	0	0	110.59
1920	0	0	0	0	12.94	30.41	22.56	29.32	15.3	13	0	0	123.53
1921	0	0	0	0.7	20.26	23.92	46.33	37.83	27.1	6.06	0	0	162.2
1922	0	0	0	3.77	16.98	16.82	16.63	14.06	14.46	0.97	0	0	83.69
1923	0	0	0	1.12	13.39	9.47	20.69	15.12	15.16	0	0	0	74.95
1924	0	0	0	1.64	9.82	19.29	22.99	15.06	12.75	2.79	0	0	84.34
1925	0	0	0	2.73	10.71	14.88	12.47	17.42	13.9	4.01	0	0	76.12
1926	0	0	0	1.71	12.04	17.37	15.42	19.13	15.09	8.13	0	0	88.89
1927	0	0	0	0.52	12.65	16.25	15.66	9.02	13.19	6.93	0	0	74.22
1928	0	0	0	4.04	12.6	16.45	20.56	13.52	12.86	5.92	0	0	85.95
1929	0	0	0	0	9.32	15.67	17.58	23.24	13.58	5.04	0	0	84.43
1930	0	0	0	3.67	18	22.53	18.62	18.78	16.09	1.82	0	0	99.51
1931	0	0	0	2.49	12.91	19.93	16.8	14.36	5.76	12.02	5.03	0	89.3
1932	0	0	0	6.94	17.5	18.08	16.53	14.85	4.95	10.42	1.43	0	90.7
1933	0	0	6.78	3.69	5.84	28.81	20.83	14.34	8.25	8.03	1.12	0	97.69
1934	0	0	0	5.31	16.98	13.59	2.89	8.06	1.86	6.14	9.66	0	64.49
1935	0	0	9.13	3.19	5.38	13.21	18.29	18.51	9.99	5.24	0	0	82.94
1936	0	0	2.42	7.92	16.72	18.97	17.92	23.73	13.12	1.32	0	0	102.12
1937	0	0	0	2.13	15.34	16.12	18.21	10.57	7.16	14.16	5.67	0	89.36
1938	0	0	0	2.4	6.1	21.71	22.99	17.9	6.11	8.77	0.45	0	86.43
1939	0	0	0	0.63	25.5	18.24	11.25	5.61	1.12	7.9	11.87	0.54	82.66
1940	0	0	0	7.47	15.2	15.33	11.41	2.22	9.76	2.35	0	0	63.74
1941	0	0	0	1.25	19.75	24.81	19.05	16.82	14.39	1.72	0	0	97.79
1942	0	0	0	0	0	15.8	24.44	19.88	14.57	5.21	0	0	79.9
1943	0	0	0	3.52	9.75	24.21	17.32	15.06	13.29	12.25	0	0	95.4
1944	0	0	0	0	10.18	25.89	25.04	15.06	8.81	13.12	0	0	98.1
1945	0	0	0	0	7.97	12.26	22.42	16.99	16.72	1.5	0	0	77.86
1946	0	0	0	7.73	10.44	15.4	15.69	14.92	14.67	2.43	0	0	81.28
1947	0	0	0	0.74	7.4	9.17	27.13	28.05	16.6	5.62	0	0	94.71
1948	0	0	0	2.38	14.61	15.62	21.08	15.07	14.57	5.16	0	0	88.49
1949	0	0	0	1.45	6.1	9.81	27.86	17.46	15.29	2.68	0	0	80.65
1950	0	0	0	4.32	7.82	16.23	15.06	10.58	10.62	8.75	0	0	73.38
1951	0	0	0	0	15.5	21.52	22.33	13.91	13.21	2.59	0	0	89.06
1952	0	0	0	0.41	9.88	28.52	19.11	15.43	15.49	11.14	0	0	99.98
1953	0	0	0	0	12.68	24.14	19.25	17.15	11.05	10.42	0	0	94.69
1954	0	0	0	0.21	14.89	11.21	10.5	7.65	2.02	9.24	0	0	55.72
1955	0	0	0	0.33	11.46	14.86	7.03	14.01	11.54	4.72	0	0	63.95
1956	0	0	0	3.93	18.85	22.22	12.13	12.03	0.71	4.68	0	0	74.55
1957	0	0	0	0	1.47	12.43	22.45	18.31	13.12	5.17	0	0	72.95
1958	0	0	0	0.17	3.61	18.48	15.38	13.06	10.67	7.37	0	0	68.74
1959	0	0	0	0	7.14	22.01	16.11	15.27	10.32	0.03	0	0	70.88
1960	0	0	0	3.91	6.23	16.67	20.04	14.02	12.61	4.91	0	0	78.39
1961	0	0	0	1	6.09	11.25	15.03	22.14	5.89	0	0	0	61.4
1962	0	0	0	3.12	17.47	16.33	20.61	14.98	14.27	10.03	0	0	96.81
1963	0	0	0	3.8	7.27	12.56	8.07	13.5	11.93	10.88	0	0	68.01
1964	0	0	0	2.62	14.02	8.56	15.06	16.94	11.18	11.66	4.12	0	84.16
1965	0	0	0	3.78	11.62	0.81	15.88	14.52	9.81	0.53	0	0	56.95
1966	0	0	0	5.24	14.39	14.12	13.65	14.94	11.73	3.94	0	0	78.01
1967	0	0	0	3.42	5.46	0.86	7.4	15.06	11.44	3.87	0	0	47.51
1968	0	0	0	1.36	12.33	17.36	15.1	18.4	11.93	4.2	0	0	80.68
1969	0	0	0	5.1	8.07	7.37	26.26	21.22	10.52	1.01	0	0	79.55
1970	0	0	0	0	16.36	10.51	22.11	22.56	6.95	0	0	0	78.49
1971	0	0	0	0.83	3.94	21.91	26.56	17.02	7.56	0	0	0	77.82
Average	0.00	0.00	0.35	2.38	11.75	16.86	18.38	16.33	11.47	5.58	0.74	0.01	83.84

Table 4
CAMAS Fulton Ditch Shares Consumptive Use Analysis
Ditch Loss

20%

Year	Jan	Feb	Mar	Apr	May	Jun	Jul	Aug	Sep	Oct	Nov	Dec	Total
1919	0	0	0	0.66	4.74	4.71	4.45	4.16	3.4	0	0	0	22.12
1920	0	0	0	0	2.59	6.08	4.51	5.86	3.06	2.6	0	0	24.7
1921	0	0	0	0.14	4.05	4.78	9.27	7.57	5.42	1.21	0	0	32.44
1922	0	0	0	0.75	3.4	3.36	3.33	2.81	2.89	0.19	0	0	16.73
1923	0	0	0	0.22	2.68	1.89	4.14	3.02	3.03	0	0	0	14.98
1924	0	0	0	0.33	1.96	3.86	4.6	3.01	2.55	0.56	0	0	16.87
1925	0	0	0	0.55	2.14	2.98	2.49	3.48	2.78	0.8	0	0	15.22
1926	0	0	0	0.34	2.41	3.47	3.08	3.83	3.02	1.63	0	0	17.78
1927	0	0	0	0.1	2.53	3.25	3.13	1.8	2.64	1.39	0	0	14.84
1928	0	0	0	0.81	2.52	3.29	4.11	2.7	2.57	1.18	0	0	17.18
1929	0	0	0	0	1.86	3.13	3.52	4.65	2.72	1.01	0	0	16.89
1930	0	0	0	0.73	3.6	4.51	3.72	3.76	3.22	0.36	0	0	19.9
1931	0	0	0	0.5	2.58	3.99	3.36	2.87	1.15	2.4	1.01	0	17.86
1932	0	0	0	1.39	3.5	3.62	3.31	2.97	0.99	2.08	0.29	0	18.15
1933	0	0	1.36	0.74	1.17	5.76	4.17	2.87	1.65	1.61	0.22	0	19.55
1934	0	0	0	1.06	3.4	2.72	0.58	1.61	0.37	1.23	1.93	0	12.9
1935	0	0	1.83	0.64	1.08	2.64	3.66	3.7	2	1.05	0	0	16.6
1936	0	0	0.48	1.58	3.34	3.79	3.58	4.75	2.62	0.26	0	0	20.4
1937	0	0	0	0.43	3.07	3.22	3.64	2.11	1.43	2.83	1.13	0	17.86
1938	0	0	0	0.48	1.22	4.34	4.6	3.58	1.22	1.75	0.09	0	17.28
1939	0	0	0	0.13	5.1	3.65	2.25	1.12	0.22	1.58	2.37	0.11	16.53
1940	0	0	0	1.49	3.04	3.07	2.28	0.44	1.95	0.47	0	0	12.74
1941	0	0	0	0.25	3.95	4.96	3.81	3.36	2.88	0.34	0	0	19.55
1942	0	0	0	0	0	3.16	4.89	3.98	2.91	1.04	0	0	15.98
1943	0	0	0	0.7	1.95	4.84	3.46	3.01	2.66	2.45	0	0	19.07
1944	0	0	0	0	2.04	5.18	5.01	3.01	1.76	2.62	0	0	19.62
1945	0	0	0	0	1.59	2.45	4.48	3.4	3.34	0.3	0	0	15.56
1946	0	0	0	1.55	2.09	3.08	3.14	2.98	2.93	0.49	0	0	16.26
1947	0	0	0	0.15	1.48	1.83	5.43	5.61	3.32	1.12	0	0	18.94
1948	0	0	0	0.48	2.92	3.12	4.22	3.01	2.91	1.03	0	0	17.69
1949	0	0	0	0.29	1.22	1.96	5.57	3.49	3.06	0.54	0	0	16.13
1950	0	0	0	0.86	1.56	3.25	3.01	2.12	2.12	1.75	0	0	14.67
1951	0	0	0	0	3.1	4.3	4.47	2.78	2.64	0.52	0	0	17.81
1952	0	0	0	0.08	1.98	5.7	3.82	3.09	3.1	2.23	0	0	20
1953	0	0	0	0	2.54	4.83	3.85	3.43	2.21	2.08	0	0	18.94
1954	0	0	0	0.04	2.98	2.24	2.1	1.53	0.4	1.85	0	0	11.14
1955	0	0	0	0.07	2.29	2.97	1.41	2.8	2.31	0.94	0	0	12.79
1956	0	0	0	0.79	3.77	4.44	2.43	2.41	0.14	0.94	0	0	14.92
1957	0	0	0	0	0.29	2.49	4.49	3.66	2.62	1.03	0	0	14.58
1958	0	0	0	0.03	0.72	3.69	3.08	2.61	2.13	1.47	0	0	13.73
1959	0	0	0	0	1.43	4.4	3.22	3.05	2.06	0.01	0	0	14.17
1960	0	0	0	0.78	1.25	3.33	4.01	2.8	2.52	0.98	0	0	15.67
1961	0	0	0	0.2	1.22	2.25	3.01	4.43	1.18	0	0	0	12.29
1962	0	0	0	0.62	3.49	3.27	4.12	3	2.85	2.01	0	0	19.36
1963	0	0	0	0.76	1.45	2.51	1.61	2.7	2.39	2.18	0	0	13.6
1964	0	0	0	0.52	2.8	1.71	3.01	3.39	2.24	2.33	0.82	0	16.82
1965	0	0	0	0.76	2.32	0.16	3.18	2.9	1.96	0.11	0	0	11.39
1966	0	0	0	1.05	2.88	2.82	2.73	2.99	2.35	0.79	0	0	15.61
1967	0	0	0	0.68	1.09	0.17	1.48	3.01	2.29	0.77	0	0	9.49
1968	0	0	0	0.27	2.47	3.47	3.02	3.68	2.39	0.84	0	0	16.14
1969	0	0	0	1.02	1.61	1.47	5.25	4.24	2.1	0.2	0	0	15.89
1970	0	0	0	0	3.27	2.1	4.42	4.51	1.39	0	0	0	15.69
1971	0	0	0	0.17	0.79	4.38	5.31	3.4	1.51	0	0	0	15.56
Average	0.00	0.00	0.07	0.48	2.35	3.37	3.68	3.27	2.29	1.12	0.15	0.00	16.77

Table 5
CAMAS Fulton Ditch Shares Consumptive Use Analysis
Farm Headgate Delivery

Year	Jan	Feb	Mar	Apr	May	Jun	Jul	Aug	Sep	Oct	Nov	Dec	Total
1919	0	0	0	2.62	18.98	18.83	17.8	16.63	13.61	0	0	0	88.47
1920	0	0	0	0	10.35	24.33	18.05	23.46	12.24	10.4	0	0	98.83
1921	0	0	0	0.56	16.21	19.13	37.06	30.26	21.68	4.85	0	0	129.75
1922	0	0	0	3.01	13.59	13.46	13.3	11.25	11.56	0.78	0	0	66.95
1923	0	0	0	0.9	10.71	7.58	16.55	12.1	12.13	0	0	0	59.97
1924	0	0	0	1.31	7.86	15.43	18.39	12.05	10.2	2.23	0	0	67.47
1925	0	0	0	2.19	8.57	11.9	9.97	13.94	11.12	3.21	0	0	60.9
1926	0	0	0	1.36	9.63	13.9	12.34	15.3	12.07	6.51	0	0	71.11
1927	0	0	0	0.42	10.12	13	12.53	7.21	10.55	5.54	0	0	59.37
1928	0	0	0	3.23	10.08	13.16	16.45	10.81	10.29	4.73	0	0	68.75
1929	0	0	0	0	7.45	12.53	14.06	18.59	10.86	4.03	0	0	67.52
1930	0	0	0	2.94	14.4	18.02	14.9	15.03	12.87	1.46	0	0	79.62
1931	0	0	0	1.99	10.33	15.95	13.44	11.49	4.61	9.62	4.03	0	71.46
1932	0	0	0	5.55	14	14.46	13.23	11.88	3.96	8.33	1.14	0	72.55
1933	0	0	5.42	2.95	4.67	23.05	16.66	11.47	6.6	6.42	0.89	0	78.13
1934	0	0	0	4.25	13.58	10.87	2.31	6.45	1.49	4.91	7.73	0	51.59
1935	0	0	7.31	2.55	4.3	10.57	14.63	14.81	7.99	4.19	0	0	66.35
1936	0	0	1.93	6.34	13.37	15.18	14.33	18.99	10.49	1.05	0	0	81.68
1937	0	0	0	1.7	12.27	12.89	14.56	8.45	5.72	11.33	4.53	0	71.45
1938	0	0	0	1.92	4.88	17.37	18.39	14.32	4.89	7.02	0.36	0	69.15
1939	0	0	0	0.5	20.4	14.59	9	4.49	0.9	6.32	9.5	0.43	66.13
1940	0	0	0	5.97	12.16	12.26	9.13	1.78	7.81	1.88	0	0	50.99
1941	0	0	0	1	15.8	19.85	15.24	13.45	11.51	1.37	0	0	78.22
1942	0	0	0	0	0	12.64	19.55	15.9	11.66	4.17	0	0	63.92
1943	0	0	0	2.81	7.8	19.37	13.86	12.05	10.63	9.8	0	0	76.32
1944	0	0	0	0	8.14	20.71	20.03	12.05	7.04	10.49	0	0	78.46
1945	0	0	0	0	6.38	9.81	17.94	13.6	13.37	1.2	0	0	62.3
1946	0	0	0	6.18	8.35	12.32	12.55	11.94	11.73	1.94	0	0	65.01
1947	0	0	0	0.59	5.92	7.34	21.71	22.44	13.28	4.49	0	0	75.77
1948	0	0	0	1.9	11.69	12.5	16.87	12.05	11.66	4.13	0	0	70.8
1949	0	0	0	1.16	4.88	7.85	22.29	13.97	12.23	2.14	0	0	64.52
1950	0	0	0	3.46	6.26	12.99	12.05	8.46	8.49	7	0	0	58.71
1951	0	0	0	0	12.4	17.21	17.87	11.13	10.57	2.07	0	0	71.25
1952	0	0	0	0.33	7.9	22.82	15.29	12.34	12.39	8.92	0	0	79.99
1953	0	0	0	0	10.14	19.31	15.4	13.72	8.84	8.33	0	0	75.74
1954	0	0	0	0.17	11.91	8.96	8.4	6.12	1.62	7.39	0	0	44.57
1955	0	0	0	0.26	9.17	11.88	5.63	11.21	9.23	3.78	0	0	51.16
1956	0	0	0	3.14	15.08	17.78	9.7	9.63	0.57	3.75	0	0	59.65
1957	0	0	0	0	1.18	9.94	17.96	14.64	10.5	4.13	0	0	58.35
1958	0	0	0	0.14	2.89	14.78	12.31	10.45	8.54	5.9	0	0	55.01
1959	0	0	0	0	5.71	17.61	12.89	12.22	8.26	0.02	0	0	56.71
1960	0	0	0	3.13	4.99	13.34	16.03	11.22	10.09	3.93	0	0	62.73
1961	0	0	0	0.8	4.87	9	12.03	17.71	4.71	0	0	0	49.12
1962	0	0	0	2.49	13.98	13.06	16.49	11.98	11.41	8.03	0	0	77.44
1963	0	0	0	3.04	5.82	10.05	6.45	10.8	9.55	8.71	0	0	54.42
1964	0	0	0	2.09	11.21	6.85	12.05	13.56	8.94	9.33	3.29	0	67.32
1965	0	0	0	3.02	9.29	0.65	12.71	11.61	7.85	0.42	0	0	45.55
1966	0	0	0	4.19	11.52	11.3	10.92	11.95	9.38	3.15	0	0	62.41
1967	0	0	0	2.74	4.37	0.69	5.92	12.05	9.15	3.1	0	0	38.02
1968	0	0	0	1.09	9.86	13.89	12.08	14.72	9.54	3.36	0	0	64.54
1969	0	0	0	4.08	6.46	5.89	21.01	16.98	8.42	0.81	0	0	63.65
1970	0	0	0	0	13.09	8.41	17.69	18.05	5.56	0	0	0	62.8
1971	0	0	0	0.67	3.15	17.53	21.25	13.62	6.05	0	0	0	62.27
Average	0.00	0.00	0.28	1.90	9.40	13.49	14.70	13.06	9.18	4.47	0.59	0.01	67.07

Table 6

CAMAS Fulton Ditch Shares Consumptive Use Analysis
Water Available for Consumptive Use

50%

Year	Jan	Feb	Mar	Apr	May	Jun	Jul	Aug	Sep	Oct	Nov	Dec	Total
1919	0	0	0	1.31	9.49	9.42	8.9	8.31	6.81	0	0	0	44.24
1920	0	0	0	0	5.17	12.17	9.02	11.73	6.12	5.2	0	0	49.41
1921	0	0	0	0.28	8.1	9.57	18.53	15.13	10.84	2.43	0	0	64.88
1922	0	0	0	1.51	6.79	6.73	6.65	5.62	5.78	0.39	0	0	33.47
1923	0	0	0	0.45	5.36	3.79	8.28	6.05	6.06	0	0	0	29.99
1924	0	0	0	0.66	3.93	7.72	9.19	6.02	5.1	1.12	0	0	33.74
1925	0	0	0	1.09	4.29	5.95	4.99	6.97	5.56	1.6	0	0	30.45
1926	0	0	0	0.68	4.81	6.95	6.17	7.65	6.03	3.25	0	0	35.54
1927	0	0	0	0.21	5.06	6.5	6.26	3.61	5.28	2.77	0	0	29.69
1928	0	0	0	1.62	5.04	6.58	8.22	5.41	5.15	2.37	0	0	34.39
1929	0	0	0	0	3.73	6.27	7.03	9.3	5.43	2.02	0	0	33.78
1930	0	0	0	1.47	7.2	9.01	7.45	7.51	6.43	0.73	0	0	39.8
1931	0	0	0	1	5.16	7.97	6.72	5.74	2.3	4.81	2.01	0	35.71
1932	0	0	0	2.78	7	7.23	6.61	5.94	1.98	4.17	0.57	0	36.28
1933	0	0	2.71	1.47	2.33	11.53	8.33	5.74	3.3	3.21	0.45	0	39.07
1934	0	0	0	2.12	6.79	5.44	1.16	3.22	0.75	2.46	3.86	0	25.8
1935	0	0	3.65	1.28	2.15	5.28	7.32	7.41	4	2.09	0	0	33.18
1936	0	0	0.97	3.17	6.69	7.59	7.17	9.49	5.25	0.53	0	0	40.86
1937	0	0	0	0.85	6.14	6.45	7.28	4.23	2.86	5.66	2.27	0	35.74
1938	0	0	0	0.96	2.44	8.68	9.2	7.16	2.44	3.51	0.18	0	34.57
1939	0	0	0	0.25	10.2	7.3	4.5	2.24	0.45	3.16	4.75	0.21	33.06
1940	0	0	0	2.99	6.08	6.13	4.56	0.89	3.91	0.94	0	0	25.5
1941	0	0	0	0.5	7.9	9.92	7.62	6.73	5.76	0.69	0	0	39.12
1942	0	0	0	0	0	6.32	9.78	7.95	5.83	2.08	0	0	31.96
1943	0	0	0	1.41	3.9	9.69	6.93	6.02	5.32	4.9	0	0	38.17
1944	0	0	0	0	4.07	10.36	10.02	6.02	3.52	5.25	0	0	39.24
1945	0	0	0	0	3.19	4.9	8.97	6.8	6.69	0.6	0	0	31.15
1946	0	0	0	3.09	4.17	6.16	6.27	5.97	5.87	0.97	0	0	32.5
1947	0	0	0	0.3	2.96	3.67	10.85	11.22	6.64	2.25	0	0	37.89
1948	0	0	0	0.95	5.84	6.25	8.43	6.03	5.83	2.06	0	0	35.39
1949	0	0	0	0.58	2.44	3.93	11.14	6.98	6.11	1.07	0	0	32.25
1950	0	0	0	1.73	3.13	6.49	6.02	4.23	4.25	3.5	0	0	29.35
1951	0	0	0	0	6.2	8.61	8.93	5.56	5.28	1.04	0	0	35.62
1952	0	0	0	0.17	3.95	11.41	7.64	6.17	6.19	4.46	0	0	39.99
1953	0	0	0	0	5.07	9.66	7.7	6.86	4.42	4.17	0	0	37.88
1954	0	0	0	0.08	5.96	4.48	4.2	3.06	0.81	3.69	0	0	22.28
1955	0	0	0	0.13	4.58	5.94	2.81	5.6	4.62	1.89	0	0	25.57
1956	0	0	0	1.57	7.54	8.89	4.85	4.81	0.28	1.87	0	0	29.81
1957	0	0	0	0	0.59	4.97	8.98	7.32	5.25	2.07	0	0	29.18
1958	0	0	0	0.07	1.45	7.39	6.15	5.23	4.27	2.95	0	0	27.51
1959	0	0	0	0	2.85	8.8	6.45	6.11	4.13	0.01	0	0	28.35
1960	0	0	0	1.56	2.49	6.67	8.02	5.61	5.05	1.97	0	0	31.37
1961	0	0	0	0.4	2.44	4.5	6.01	8.86	2.35	0	0	0	24.56
1962	0	0	0	1.25	6.99	6.53	8.25	5.99	5.71	4.01	0	0	38.73
1963	0	0	0	1.52	2.91	5.02	3.23	5.4	4.77	4.35	0	0	27.2
1964	0	0	0	1.05	5.61	3.42	6.02	6.78	4.47	4.66	1.65	0	33.66
1965	0	0	0	1.51	4.65	0.32	6.35	5.81	3.93	0.21	0	0	22.78
1966	0	0	0	2.09	5.76	5.65	5.46	5.98	4.69	1.57	0	0	31.2
1967	0	0	0	1.37	2.18	0.34	2.96	6.02	4.57	1.55	0	0	18.99
1968	0	0	0	0.54	4.93	6.94	6.04	7.36	4.77	1.68	0	0	32.26
1969	0	0	0	2.04	3.23	2.95	10.5	8.49	4.21	0.41	0	0	31.83
1970	0	0	0	0	6.54	4.2	8.84	9.02	2.78	0	0	0	31.38
1971	0	0	0	0.33	1.58	8.76	10.62	6.81	3.02	0	0	0	31.12
Average	0.00	0.00	0.14	0.95	4.70	6.74	7.35	6.53	4.59	2.23	0.30	0.00	33.54

Table 7
CAMAS Fulton Ditch Shares Consumptive Use Analysis
Crop Irrigation Requirement

Year	Jan	Feb	Mar	Apr	May	Jun	Jul	Aug	Sep	Oct	Nov	Dec	Total
1919	0	0	0	3.62	9.85	17.93	19.7	18.92	9.62	2.26	0	0	81.9
1920	0	0	0	0.34	7.82	16.72	18.1	11.24	10.41	3.75	0	0	68.38
1921	0	0	0	0.66	7.47	9.41	16.84	13.87	10.01	5.9	0.48	0	64.64
1922	0	0	0	1.82	11.61	19.39	17.79	13.95	12.75	5.27	0	0	82.58
1923	0	0	0	3.23	5.18	4.85	16.56	10.19	8.68	0.16	0	0	48.85
1924	0	0	0	2.66	3.91	16.84	20.35	19.51	7.02	4.54	0.43	0	75.26
1925	0	0	1.05	7.75	10.59	13.9	16.08	14.06	10.14	0.38	0	0	73.95
1926	0	0	0	3.03	7.04	15.21	14.58	17.65	10.06	3.41	0.31	0	71.29
1927	0	0	0	3.08	11	10.39	17.41	11.74	7.62	5.11	0.35	0	66.7
1928	0	0	0	2.49	6.72	5.14	14.23	15.74	10	1.71	0	0	56.03
1929	0	0	0	2.96	6.29	17.04	20.08	17.58	6.82	2.9	0	0	73.67
1930	0	0	0.26	6.16	5.54	16.8	17.94	10.61	10.33	2.18	0	0	69.82
1931	0	0	0	2.24	6.48	16.99	22.27	16.72	13.41	3.47	0	0	81.58
1932	0	0	0	4.62	10.39	12.04	18.49	18.08	11.02	2.56	0	0	77.2
1933	0	0	0	0.2	5.3	18.28	21.88	13.71	9.76	6.7	0.73	0	76.56
1934	0	0	0.87	5.56	10.57	15.49	22.09	20.4	9.1	6.57	0.94	0	91.59
1935	0	0	0	1.02	0	16.45	18.96	17.07	6.55	4.16	0	0	64.21
1936	0	0	0	5.98	9.74	13.66	25.75	18.65	8.7	2.94	0	0	85.42
1937	0	0	0	3.55	8.57	10.43	21.68	22.12	13.38	5.64	0.02	0	85.39
1938	0	0	0.33	1.57	2.4	15.16	21.08	19.25	0.15	5.22	0	0	65.16
1939	0	0	0	2.93	10.77	15.95	24.53	18.55	11.37	5.43	0.11	0	89.64
1940	0	0	0	3.25	7.92	18.02	17.4	18.94	4.8	4.55	0	0	74.88
1941	0	0	0	0.63	6.45	13.72	17.19	9	7.79	2.24	0	0	57.02
1942	0	0	0	0.08	8.04	8.71	17.81	16.92	9.54	0	0	0	61.1
1943	0	0	0	3.85	2.62	14.18	19.31	19.23	11.06	5.68	0	0	75.93
1944	0	0	0	0.01	8.25	15.84	17.71	19.85	11.55	4.12	0	0	77.33
1945	0	0	0	0.13	7.9	9.19	19.13	6.53	7.62	4.6	0	0	55.1
1946	0	0	2.4	6.09	0.53	14.63	17.66	13.61	9.24	0.77	0	0	64.93
1947	0	0	0	2.41	4.3	9.39	16.19	15.67	8.61	3.53	0	0	60.1
1948	0	0	0	3.76	8.99	13.01	18.5	15.64	8.61	4.58	0	0	73.09
1949	0	0	0.06	3.4	0	6.82	15.34	18.91	8.61	5.07	2.08	0	60.29
1950	0	0	0	1.58	6.13	13.2	19.03	17.78	10.15	5.21	0	0	73.08
1951	0	0	0	2.04	9.74	11.55	15.85	10.97	9.44	1.43	0	0	61.02
1952	0	0	0	2.68	6.67	21.78	22.82	16.95	13.56	5.38	0	0	89.84
1953	0	0	0	1.84	6.48	20.48	19.52	16.16	13.77	6.55	0.71	0	85.51
1954	0	0	0.35	8.25	10.26	19.53	20.57	18.11	10.92	4.74	0.46	0	93.19
1955	0	0	0.23	7.51	9.07	13.21	19.89	13.07	5.01	3.95	0	0	71.94
1956	0	0	0	4.12	12.2	21.37	19.12	14.16	12.12	4.86	0	0	87.95
1957	0	0	0	2.9	7.14	15.38	21	13.76	9.1	3.62	0	0	72.9
1958	0	0	0	2.33	4.11	15.84	15.3	19.31	10.17	5.77	0.5	0	73.33
1959	0	0	0	2.98	6.44	19.26	21.73	17.49	6.4	0.78	0	0	75.08
1960	0	0	0.23	5.07	5.29	17.58	20.61	19.98	11.62	2.23	0.07	0	82.68
1961	0	0	0	4.65	3	13.67	19.28	15.21	2.8	3.7	0	0	62.31
1962	0	0	0	5.57	10.05	13.92	17.52	18.62	10.67	5.83	0.46	0	82.64
1963	0	0	0	6.47	13.25	12.49	23.57	11.77	10.49	7.6	0.64	0	86.28
1964	0	0	0	3.59	8.47	14.15	22.18	16.94	9.21	5.24	0	0	79.78
1965	0	0	0	4.77	5.93	7	11.8	17.14	4.14	5.39	0.91	0	57.08
1966	0	0	0	1.79	10.86	12.97	22.11	16.32	6.35	2.65	0	0	73.05
1967	0	0	0.24	0.01	0.17	5.47	12.76	14.21	10.07	4.08	0	0	47.01
1968	0	0	0	0.94	6.55	15.25	21.06	12.82	9.49	3.83	0	0	69.94
1969	0	0	0	3.71	4.92	8.44	20.81	16.76	9.25	0	0	0	63.89
1970	0	0	0	2.02	10.92	7.28	17.13	16.93	4.96	1.68	0	0	60.92
1971	0	0	0	0.77	4.77	18.04	17.53	18.87	2.15	3.59	0	0	65.72
Average	0.00	0.00	0.11	3.11	7.07	13.95	18.94	15.99	8.98	3.84	0.17	0.00	72.16

Table 8
CAMAS Fulton Ditch Shares Consumptive Use Analysis
Consumptive Use

Year	Jan	Feb	Mar	Apr	May	Jun	Jul	Aug	Sep	Oct	Nov	Dec	Total
1919	0	0	0	1.31	9.49	9.42	8.9	8.31	6.81	0	0	0	44.24
1920	0	0	0	0	5.17	12.17	9.02	11.73	6.12	5.2	0	0	49.41
1921	0	0	0	0.28	8.1	9.57	18.53	15.13	10.84	2.43	0	0	64.88
1922	0	0	0	1.51	6.79	6.73	6.65	5.62	5.78	0.39	0	0	33.47
1923	0	0	0	0.45	5.36	3.79	8.28	6.05	6.06	0	0	0	29.99
1924	0	0	0	0.66	3.93	7.72	9.19	6.02	5.1	1.12	0	0	33.74
1925	0	0	0	1.09	4.29	5.95	4.99	6.97	5.56	1.6	0	0	30.45
1926	0	0	0	0.68	4.81	6.95	6.17	7.65	6.03	3.25	0	0	35.54
1927	0	0	0	0.21	5.06	6.5	6.26	3.61	5.28	2.77	0	0	29.69
1928	0	0	0	1.62	5.04	6.58	8.22	5.41	5.15	2.37	0	0	34.39
1929	0	0	0	0	3.73	6.27	7.03	9.3	5.43	2.02	0	0	33.78
1930	0	0	0	1.47	7.2	9.01	7.45	7.51	6.43	0.73	0	0	39.8
1931	0	0	0	1	5.16	7.97	6.72	5.74	2.3	4.81	2.01	0	35.71
1932	0	0	0	2.78	7	7.23	6.61	5.94	1.98	4.17	0.57	0	36.28
1933	0	0	2.71	1.47	2.33	11.53	8.33	5.74	3.3	3.21	0.45	0	39.07
1934	0	0	0	2.12	6.79	5.44	1.16	3.22	0.75	2.46	3.86	0	25.8
1935	0	0	3.65	1.28	0	5.28	7.32	7.41	4	2.09	0	0	31.03
1936	0	0	0.97	3.17	6.69	7.59	7.17	9.49	5.25	0.53	0	0	40.86
1937	0	0	0	0.85	6.14	6.45	7.28	4.23	2.86	5.66	2.27	0	35.74
1938	0	0	0	0.96	2.44	8.68	9.2	7.16	2.44	3.51	0.18	0	34.57
1939	0	0	0	0.25	10.2	7.3	4.5	2.24	0.45	3.16	4.75	0.21	33.06
1940	0	0	0	2.99	6.08	6.13	4.56	0.89	3.91	0.94	0	0	25.5
1941	0	0	0	0.5	7.9	9.92	7.62	6.73	5.76	0.69	0	0	39.12
1942	0	0	0	0	0	6.32	9.78	7.95	5.83	2.08	0	0	31.96
1943	0	0	0	1.41	3.9	9.69	6.93	6.02	5.32	4.9	0	0	38.17
1944	0	0	0	0	4.07	10.36	10.02	6.02	3.52	5.25	0	0	39.24
1945	0	0	0	0	3.19	4.9	8.97	6.8	6.69	0.6	0	0	31.15
1946	0	0	0	3.09	4.17	6.16	6.27	5.97	5.87	0.97	0	0	32.5
1947	0	0	0	0.3	2.96	3.67	10.85	11.22	6.64	2.25	0	0	37.89
1948	0	0	0	0.95	5.84	6.25	8.43	6.03	5.83	2.06	0	0	35.39
1949	0	0	0	0.58	2.44	3.93	11.14	6.98	6.11	1.07	0	0	32.25
1950	0	0	0	1.73	3.13	6.49	6.02	4.23	4.25	3.5	0	0	29.35
1951	0	0	0	0	6.2	8.61	8.93	5.56	5.28	1.04	0	0	35.62
1952	0	0	0	0.17	3.95	11.41	7.64	6.17	6.19	4.46	0	0	39.99
1953	0	0	0	0	5.07	9.66	7.7	6.86	4.42	4.17	0	0	37.88
1954	0	0	0	0.08	5.96	4.48	4.2	3.06	0.81	3.69	0	0	22.28
1955	0	0	0	0.13	4.58	5.94	2.81	5.6	4.62	1.89	0	0	25.57
1956	0	0	0	1.57	7.54	8.89	4.85	4.81	0.28	1.87	0	0	29.81
1957	0	0	0	0	0.59	4.97	8.98	7.32	5.25	2.07	0	0	29.18
1958	0	0	0	0.07	1.45	7.39	6.15	5.23	4.27	2.95	0	0	27.51
1959	0	0	0	0	2.85	8.8	6.45	6.11	4.13	0.01	0	0	28.35
1960	0	0	0	1.56	2.49	6.67	8.02	5.61	5.05	1.97	0	0	31.37
1961	0	0	0	0.4	2.44	4.5	6.01	8.86	2.35	0	0	0	24.56
1962	0	0	0	1.25	6.99	6.53	8.25	5.99	5.71	4.01	0	0	38.73
1963	0	0	0	1.52	2.91	5.02	3.23	5.4	4.77	4.35	0	0	27.2
1964	0	0	0	1.05	5.61	3.42	6.02	6.78	4.47	4.66	1.65	0	33.66
1965	0	0	0	1.51	4.65	0.32	6.35	5.81	3.93	0.21	0	0	22.78
1966	0	0	0	2.09	5.76	5.65	5.46	5.98	4.69	1.57	0	0	31.2
1967	0	0	0	1.37	2.18	0.34	2.96	6.02	4.57	1.55	0	0	18.99
1968	0	0	0	0.54	4.93	6.94	6.04	7.36	4.77	1.68	0	0	32.26
1969	0	0	0	2.04	3.23	2.95	10.5	8.49	4.21	0.41	0	0	31.83
1970	0	0	0	0	6.54	4.2	8.84	9.02	2.78	0	0	0	31.38
1971	0	0	0	0.33	1.58	8.76	10.62	6.81	3.02	0	0	0	31.12
Average	0.00	0.00	0.14	0.95	4.66	6.74	7.35	6.53	4.59	2.23	0.30	0.00	33.50