

1.0 RULE 6.3.1: EXHIBIT A—LEGAL DESCRIPTION

1.1 LEGAL DESCRIPTION

- (1) The legal description must identify the affected land, specify affected areas and be adequate to field locate the property. Description shall be by

(a), township, range, and section, to at least the nearest quarter-quarter section,

As shown in **Figure 1-1** the Leadville Mill (Mill) facility is located at:

NE1/4 NE1/4 Section 33 and SE1/4 SE1/4 Sec 28, T9S, R80W, 6th PM

(b), location of the main entrance to the site reported as latitude and longitude, or the Universal Transverse Mercator (UTM) Grid as determined from a USGS topographic map.

Coordinates for the property entrance are:

N39°13'44.41", W106°19'51.14" (39.2290028, -106.3308722)

A metes and bounds survey description is acceptable in lieu of township, range, and section. Where available, the street address or lot number(s) shall be given. This information may be available from the County Assessor's office or U.S. Geological Survey (USGS) maps.

The street address for the Mill is as follows:

**13815 Highway 24 South
Leadville, CO 80461**

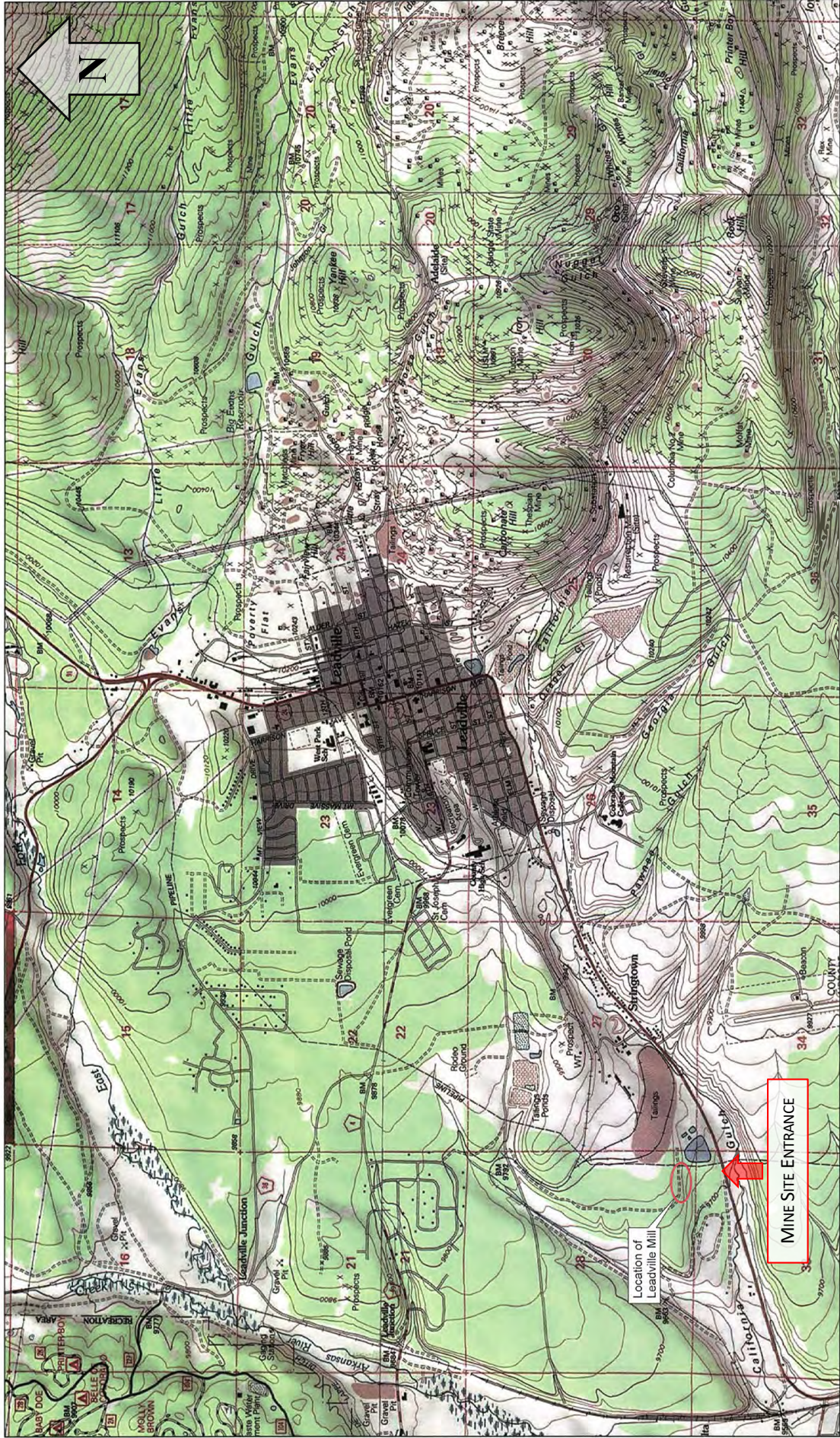
- (2) The main entrance to the mine site shall be located based on a USGS topographic map showing latitude and longitude or Universal Transverse Mercator (UTM). The

operator will need to specify coordinates of latitude and longitude in degrees, minutes and seconds or in decimal degrees to an accuracy of at least five (5) decimal places (e.g., latitude 37.12345 N, longitude 104.45678 W). For UTM, the operator will need to specify North American Datum (NAD) 1927, NAD 1983, or WGS 84, and the applicable zone, measured in meters.

Coordinates for the Mill Site Entrance are:

N39°13'40.48", W106°19'54.05" (39.2279111, -106.3316806)

Mill site entrance is shown on **Figure 1-1**.



LEADVILLE MILL GENERAL LOCATION

LEADVILLE MILL
C/JK MILLING COMPANY, LLC - LEADVILLE, COLORADO

FIGURE 1-1

Drafted By: C. Rice

Date: Jan 2021

0 0.25 0.5 1 Miles

SCALE: 1:24,000

Topographic Map Source: USGS

Location of Leadville Mill

Gulch

MINE SITE ENTRANCE