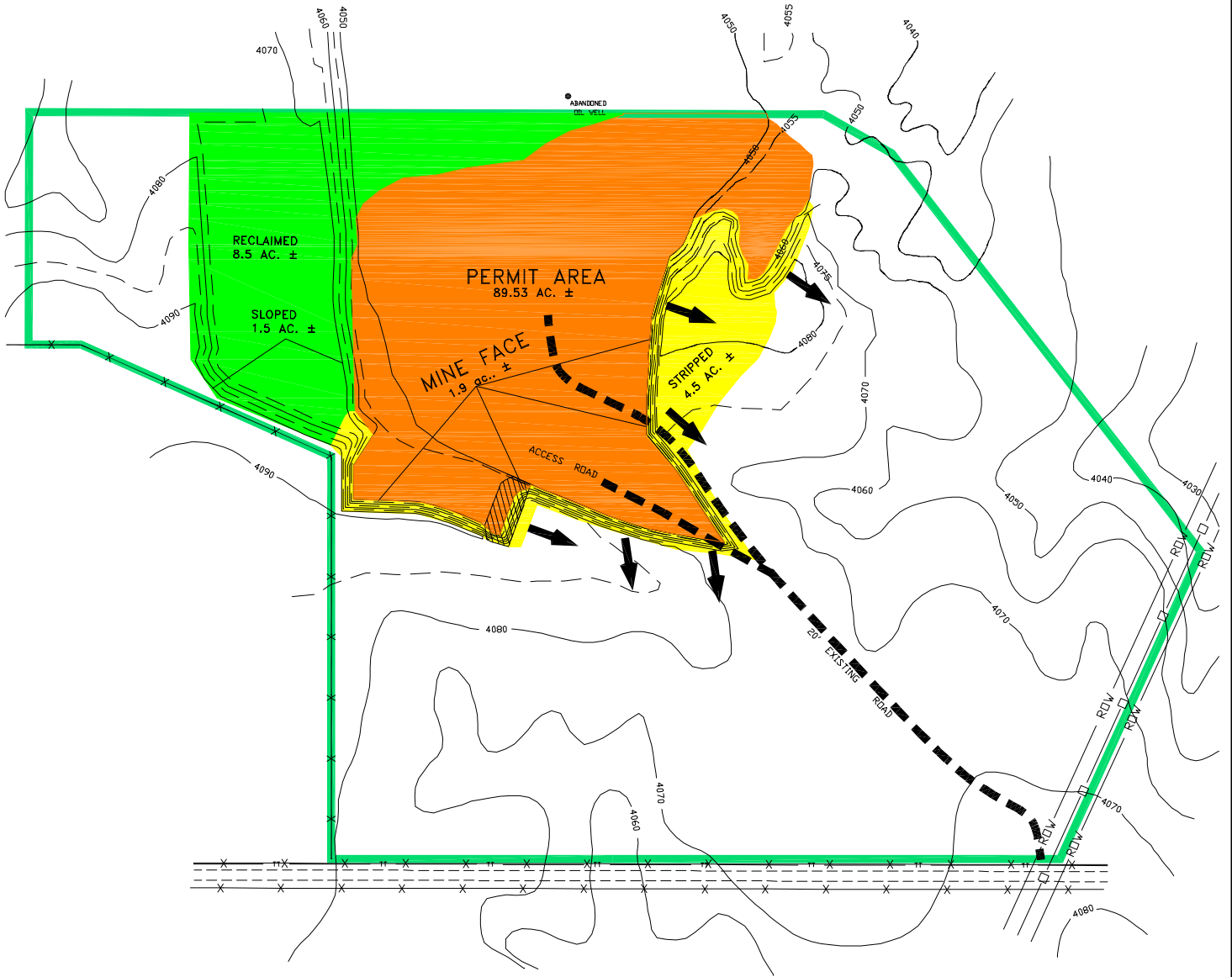


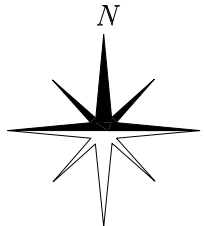
McATEE CONSTRUCTION CO.

HARLEY PIT #1 - M-1986-147

ANNUAL REPORT 2021-2022



SCALE 1"=200'



NOV 22, 2022 - 12:03:46

PREPARED BY: *ENVIRONMENT, INC.*
7985 VANCE DR., # 205A
ARVADA, CO 80003
(303) 423-7297



MINING DIRECTION



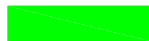
MINE FLOOR AREA - 17.8 AC. ±



PARTIALLY MINED 2022 - 0.27 AC. ±



STRIPPED & PARTIALLY MINED - 4.5 AC. ±



RECLAIMED & SEEDED AREA - 8.5 AC. ±

LEGEND

- AFFECTED LANDS
- ROADS
- ABANDONED OIL WELL
- WINDMILL
- FENCE