

November 9, 2022

Mark Jurgemeyer
Engineering Director

John Wakeham
Bennett Creek Ranch LLC
965 S 1st Street, Unit 6F-232
Bennett, Colorado 80102-8750

Dear Mr. Wakeham:

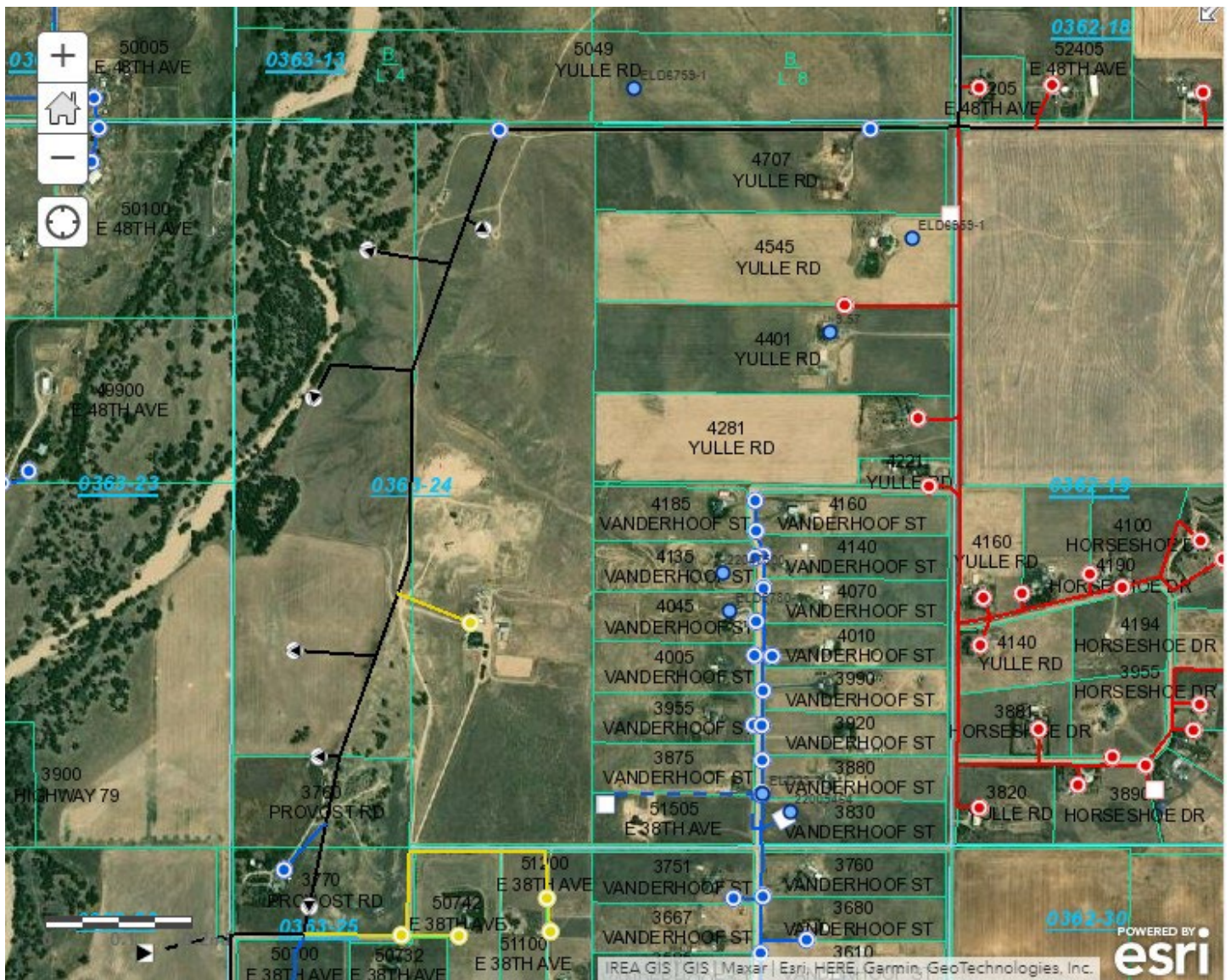
Thank you very much for your inquiry about the CORE Electric Cooperative (CORE) owned powerlines on the properties north of the corner of East 38th Avenue and Provost Road in Adams County (Adams County Parcel Numbers 01815242000001 and 0181500000058). As shown by a black line on the attached aerial map, CORE does own a three-phase overhead distribution line that runs roughly north-south with several taps for services near the boundary between the two parcels. CORE also owns a single-phase distribution line to serve eastern parcel as shown in yellow.

The existing mining operation does not interfere with safe operation of these lines. If the mining operations are extended to within 10'-0" of the wires or poles, a relocation will be necessary. Any such relocation will be at the expense of the landowner in accordance with CORE Electric Cooperative Rates and Regulations as published at www.CORE.coop in effect at the time the relocation becomes necessary. In addition to the possible relocation, all current and future mining operations must comply with OSHA and National Electrical Safety Code standards. At this time, CORE does not have any objections to the continued mining operations on this property.

If you have any questions or concerns, please don't hesitate to contact me.

Sincerely,

Mark F. Jurgemeyer, PE
Engineering Director



CORE Electric Cooperative
 5496 N. U.S. Highway 85
 Sedalia, CO 80135
 (800) 332-9540
www.core.coop