



Adequacy ReView, TR-3, Beech Hill Quarries, M1981-277

mdllbs@earthlink.net <mdllbs@earthlink.net>

Thu, Nov 3, 2022 at 4:21 PM

To: "Lennberg - DNR, Patrick" <patrick.lennberg@state.co.us>

Patrick, see attached corrected map and GPS coordinates for the Beech Hill TR attached.

Thanks,

Mike Loukonen

[Quoted text hidden]

2 attachments



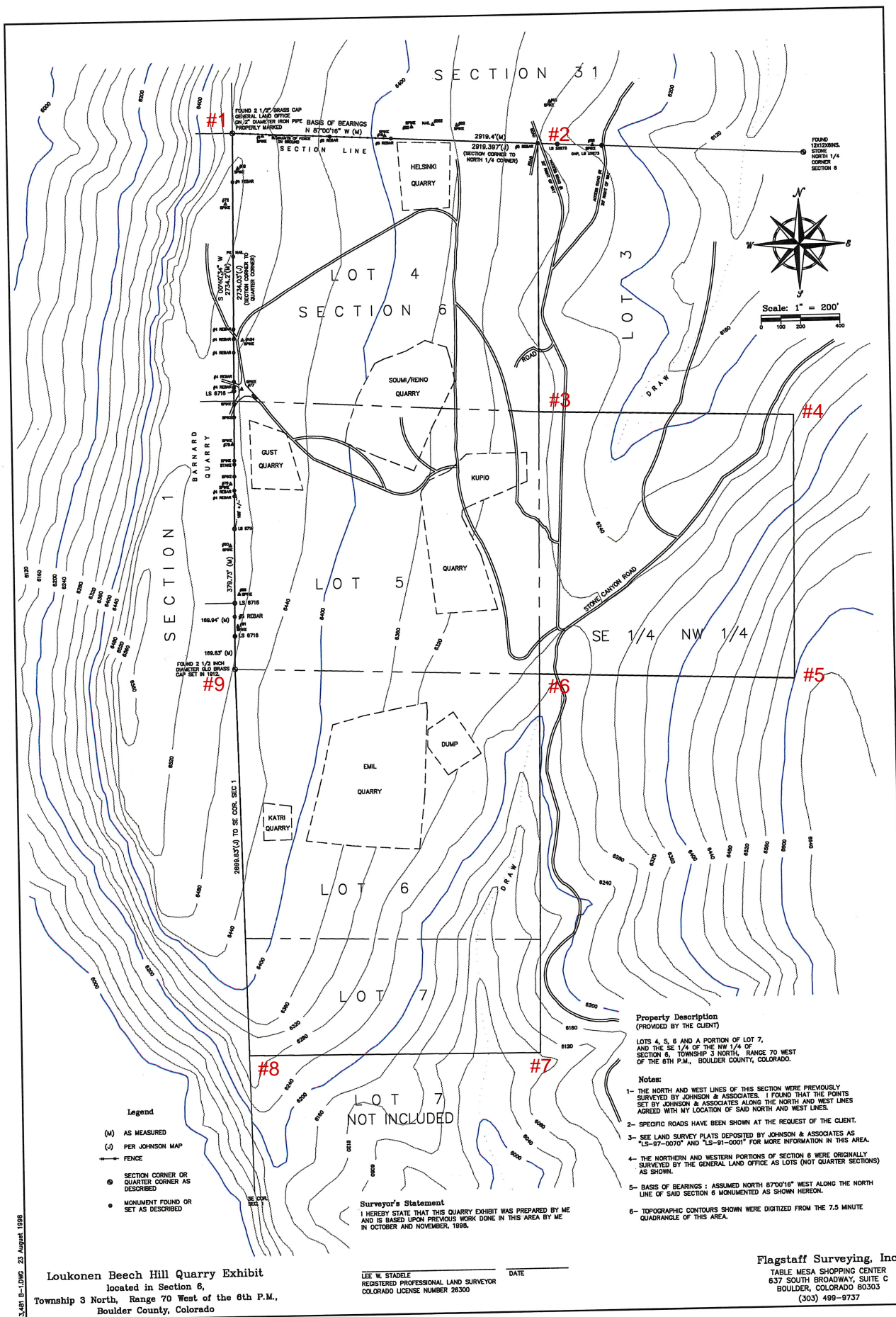
Beech hill quarry map 11-3-22 TR.PDF

2331K



Beech hill TR 11-3-22 GPS.PDF

1301K



Beech Hill Quarry map GPS points

	Lat	Long
1	40.2639	-105.2812
2	40.2637	-105.2757
3	40.2597	-105.2760
4	40.2593	-105.2713
5	40.2558	-105.2714
6	40.2560	-105.2760
7	40.2504	-105.2763
8	40.2508	-105.2813
9	40.2564	-105.2813

SEE MAP

LAT / LONG TAKEN FROM
BOULDER CO. ASSESSOR'S
WEBSITE.

