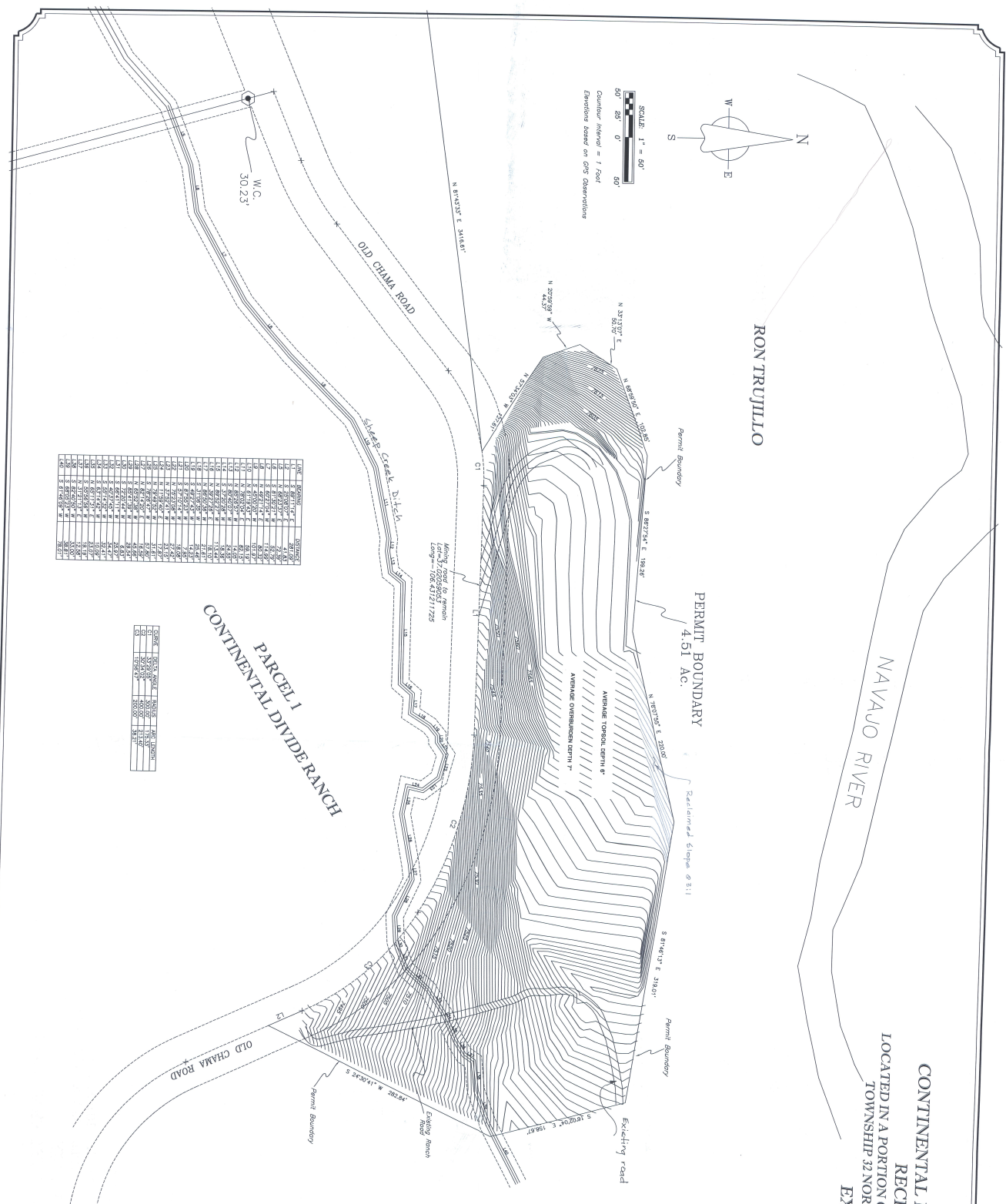


CONTINENTAL DIVIDE RANCH GRAVEL PIT
 RECLAMATION PLAN
 LOCATED IN A PORTION OF THE TERRA AMARILLA GRANT
 TOWNSHIP 32 NORTH, RANGE 2 WEST, N.M.P.M.
 EXHIBIT E



NO.	BEARING	DISTANCE	STATION
1	N 33°13'00" E	10.35	1
2	S 88°27'34" E	18.24	2
3	N 33°13'00" E	10.35	3
4	S 88°27'34" E	18.24	4
5	N 33°13'00" E	10.35	5
6	S 88°27'34" E	18.24	6
7	N 33°13'00" E	10.35	7
8	S 88°27'34" E	18.24	8
9	N 33°13'00" E	10.35	9
10	S 88°27'34" E	18.24	10
11	N 33°13'00" E	10.35	11
12	S 88°27'34" E	18.24	12
13	N 33°13'00" E	10.35	13
14	S 88°27'34" E	18.24	14
15	N 33°13'00" E	10.35	15
16	S 88°27'34" E	18.24	16
17	N 33°13'00" E	10.35	17
18	S 88°27'34" E	18.24	18
19	N 33°13'00" E	10.35	19
20	S 88°27'34" E	18.24	20
21	N 33°13'00" E	10.35	21
22	S 88°27'34" E	18.24	22
23	N 33°13'00" E	10.35	23
24	S 88°27'34" E	18.24	24
25	N 33°13'00" E	10.35	25
26	S 88°27'34" E	18.24	26
27	N 33°13'00" E	10.35	27
28	S 88°27'34" E	18.24	28
29	N 33°13'00" E	10.35	29
30	S 88°27'34" E	18.24	30
31	N 33°13'00" E	10.35	31
32	S 88°27'34" E	18.24	32
33	N 33°13'00" E	10.35	33
34	S 88°27'34" E	18.24	34
35	N 33°13'00" E	10.35	35
36	S 88°27'34" E	18.24	36
37	N 33°13'00" E	10.35	37
38	S 88°27'34" E	18.24	38
39	N 33°13'00" E	10.35	39
40	S 88°27'34" E	18.24	40
41	N 33°13'00" E	10.35	41
42	S 88°27'34" E	18.24	42
43	N 33°13'00" E	10.35	43
44	S 88°27'34" E	18.24	44
45	N 33°13'00" E	10.35	45
46	S 88°27'34" E	18.24	46
47	N 33°13'00" E	10.35	47
48	S 88°27'34" E	18.24	48
49	N 33°13'00" E	10.35	49
50	S 88°27'34" E	18.24	50
51	N 33°13'00" E	10.35	51
52	S 88°27'34" E	18.24	52
53	N 33°13'00" E	10.35	53
54	S 88°27'34" E	18.24	54
55	N 33°13'00" E	10.35	55
56	S 88°27'34" E	18.24	56
57	N 33°13'00" E	10.35	57
58	S 88°27'34" E	18.24	58
59	N 33°13'00" E	10.35	59
60	S 88°27'34" E	18.24	60
61	N 33°13'00" E	10.35	61
62	S 88°27'34" E	18.24	62
63	N 33°13'00" E	10.35	63
64	S 88°27'34" E	18.24	64
65	N 33°13'00" E	10.35	65
66	S 88°27'34" E	18.24	66
67	N 33°13'00" E	10.35	67
68	S 88°27'34" E	18.24	68
69	N 33°13'00" E	10.35	69
70	S 88°27'34" E	18.24	70
71	N 33°13'00" E	10.35	71
72	S 88°27'34" E	18.24	72
73	N 33°13'00" E	10.35	73
74	S 88°27'34" E	18.24	74
75	N 33°13'00" E	10.35	75
76	S 88°27'34" E	18.24	76
77	N 33°13'00" E	10.35	77
78	S 88°27'34" E	18.24	78
79	N 33°13'00" E	10.35	79
80	S 88°27'34" E	18.24	80
81	N 33°13'00" E	10.35	81
82	S 88°27'34" E	18.24	82
83	N 33°13'00" E	10.35	83
84	S 88°27'34" E	18.24	84
85	N 33°13'00" E	10.35	85
86	S 88°27'34" E	18.24	86
87	N 33°13'00" E	10.35	87
88	S 88°27'34" E	18.24	88
89	N 33°13'00" E	10.35	89
90	S 88°27'34" E	18.24	90
91	N 33°13'00" E	10.35	91
92	S 88°27'34" E	18.24	92
93	N 33°13'00" E	10.35	93
94	S 88°27'34" E	18.24	94
95	N 33°13'00" E	10.35	95
96	S 88°27'34" E	18.24	96
97	N 33°13'00" E	10.35	97
98	S 88°27'34" E	18.24	98
99	N 33°13'00" E	10.35	99
100	S 88°27'34" E	18.24	100

DATE	BY	SCALE	NO.	REVISION
07/14/2008	DRG	1" = 60'	1	INITIAL
07/14/2008	DRG	1" = 60'	2	REVISED
07/14/2008	DRG	1" = 60'	3	REVISED
07/14/2008	DRG	1" = 60'	4	REVISED
07/14/2008	DRG	1" = 60'	5	REVISED
07/14/2008	DRG	1" = 60'	6	REVISED
07/14/2008	DRG	1" = 60'	7	REVISED
07/14/2008	DRG	1" = 60'	8	REVISED
07/14/2008	DRG	1" = 60'	9	REVISED
07/14/2008	DRG	1" = 60'	10	REVISED
07/14/2008	DRG	1" = 60'	11	REVISED
07/14/2008	DRG	1" = 60'	12	REVISED
07/14/2008	DRG	1" = 60'	13	REVISED
07/14/2008	DRG	1" = 60'	14	REVISED
07/14/2008	DRG	1" = 60'	15	REVISED
07/14/2008	DRG	1" = 60'	16	REVISED
07/14/2008	DRG	1" = 60'	17	REVISED
07/14/2008	DRG	1" = 60'	18	REVISED
07/14/2008	DRG	1" = 60'	19	REVISED
07/14/2008	DRG	1" = 60'	20	REVISED
07/14/2008	DRG	1" = 60'	21	REVISED
07/14/2008	DRG	1" = 60'	22	REVISED
07/14/2008	DRG	1" = 60'	23	REVISED
07/14/2008	DRG	1" = 60'	24	REVISED
07/14/2008	DRG	1" = 60'	25	REVISED
07/14/2008	DRG	1" = 60'	26	REVISED
07/14/2008	DRG	1" = 60'	27	REVISED
07/14/2008	DRG	1" = 60'	28	REVISED
07/14/2008	DRG	1" = 60'	29	REVISED
07/14/2008	DRG	1" = 60'	30	REVISED
07/14/2008	DRG	1" = 60'	31	REVISED
07/14/2008	DRG	1" = 60'	32	REVISED
07/14/2008	DRG	1" = 60'	33	REVISED
07/14/2008	DRG	1" = 60'	34	REVISED
07/14/2008	DRG	1" = 60'	35	REVISED
07/14/2008	DRG	1" = 60'	36	REVISED
07/14/2008	DRG	1" = 60'	37	REVISED
07/14/2008	DRG	1" = 60'	38	REVISED
07/14/2008	DRG	1" = 60'	39	REVISED
07/14/2008	DRG	1" = 60'	40	REVISED
07/14/2008	DRG	1" = 60'	41	REVISED
07/14/2008	DRG	1" = 60'	42	REVISED
07/14/2008	DRG	1" = 60'	43	REVISED
07/14/2008	DRG	1" = 60'	44	REVISED
07/14/2008	DRG	1" = 60'	45	REVISED
07/14/2008	DRG	1" = 60'	46	REVISED
07/14/2008	DRG	1" = 60'	47	REVISED
07/14/2008	DRG	1" = 60'	48	REVISED
07/14/2008	DRG	1" = 60'	49	REVISED
07/14/2008	DRG	1" = 60'	50	REVISED
07/14/2008	DRG	1" = 60'	51	REVISED
07/14/2008	DRG	1" = 60'	52	REVISED
07/14/2008	DRG	1" = 60'	53	REVISED
07/14/2008	DRG	1" = 60'	54	REVISED
07/14/2008	DRG	1" = 60'	55	REVISED
07/14/2008	DRG	1" = 60'	56	REVISED
07/14/2008	DRG	1" = 60'	57	REVISED
07/14/2008	DRG	1" = 60'	58	REVISED
07/14/2008	DRG	1" = 60'	59	REVISED
07/14/2008	DRG	1" = 60'	60	REVISED
07/14/2008	DRG	1" = 60'	61	REVISED
07/14/2008	DRG	1" = 60'	62	REVISED
07/14/2008	DRG	1" = 60'	63	REVISED
07/14/2008	DRG	1" = 60'	64	REVISED
07/14/2008	DRG	1" = 60'	65	REVISED
07/14/2008	DRG	1" = 60'	66	REVISED
07/14/2008	DRG	1" = 60'	67	REVISED
07/14/2008	DRG	1" = 60'	68	REVISED
07/14/2008	DRG	1" = 60'	69	REVISED
07/14/2008	DRG	1" = 60'	70	REVISED
07/14/2008	DRG	1" = 60'	71	REVISED
07/14/2008	DRG	1" = 60'	72	REVISED
07/14/2008	DRG	1" = 60'	73	REVISED
07/14/2008	DRG	1" = 60'	74	REVISED
07/14/2008	DRG	1" = 60'	75	REVISED
07/14/2008	DRG	1" = 60'	76	REVISED
07/14/2008	DRG	1" = 60'	77	REVISED
07/14/2008	DRG	1" = 60'	78	REVISED
07/14/2008	DRG	1" = 60'	79	REVISED
07/14/2008	DRG	1" = 60'	80	REVISED
07/14/2008	DRG	1" = 60'	81	REVISED
07/14/2008	DRG	1" = 60'	82	REVISED
07/14/2008	DRG	1" = 60'	83	REVISED
07/14/2008	DRG	1" = 60'	84	REVISED
07/14/2008	DRG	1" = 60'	85	REVISED
07/14/2008	DRG	1" = 60'	86	REVISED
07/14/2008	DRG	1" = 60'	87	REVISED
07/14/2008	DRG	1" = 60'	88	REVISED
07/14/2008	DRG	1" = 60'	89	REVISED
07/14/2008	DRG	1" = 60'	90	REVISED
07/14/2008	DRG	1" = 60'	91	REVISED
07/14/2008	DRG	1" = 60'	92	REVISED
07/14/2008	DRG	1" = 60'	93	REVISED
07/14/2008	DRG	1" = 60'	94	REVISED
07/14/2008	DRG	1" = 60'	95	REVISED
07/14/2008	DRG	1" = 60'	96	REVISED
07/14/2008	DRG	1" = 60'	97	REVISED
07/14/2008	DRG	1" = 60'	98	REVISED
07/14/2008	DRG	1" = 60'	99	REVISED
07/14/2008	DRG	1" = 60'	100	REVISED



This map was prepared by David A. Coster, P.L.S.

RECEIVED
 OCT 23 2017
 DIVISION OF RECLAMATION
 SANTA FE, NEW MEXICO

COSTER SURVEYS
 400 LAWA STREET, SUITE A
 PUEBLO SPRINGS, CO 81157-4130
 PHONE: 719-264-1133
 FAX: 719-264-1133
 EMAIL: david@costersurveys.com

SCALE: 1" = 60 FEET
 DATE: July 14, 2008
 SHEET: 1 OF 2
 CLIENT: CONTINENTAL DIVIDE RANCH

PROJECT: CONTINENTAL DIVIDE RANCH GRAVEL PIT
 LOCATION: IN A PORTION OF THE TERRA AMARILLA GRANT
 TOWNSHIP 32 NORTH, RANGE 2 WEST, N.M.P.M.

DRG: CONTINENTAL DIVIDE RANCH GRAVEL PIT
 DATE: July 14, 2008
 CHECKED BY: DRG