



September 16, 2022

Division of Reclamation, Mining and Safety  
1313 Sherman Street, Room 215  
Denver, CO 80203  
(submitted online as part of Online Annual Report)

**RE: DRMS Annual Report - Carbon Valley Resource, Permit M-2001-017**  
**Anniversary Date: September 19**

Dear Division:

L.G. Everist, Inc. respectfully submits this cover letter, mine map, and groundwater monitoring data to accompany the online submittal of the DRMS Annual Report for Carbon Valley Resource, Permit M-2001-017. The annual fee has been paid online with a credit card.

#### **Mining and Reclamation Activity**

In the Carbon Valley Resource site, mining continued in the same area as last year, and we expanded to the south end of the mine area. Sand and gravel processing is done with portable equipment. Some of the mining area was reclaimed in 2022. The north end of the mining area has been backfilled, sloped and sealed, and the south-east end of the mining area has also been backfilled and sloped. We'll continue the reclamation work in these areas next year with top-soiling and seeding. Weed management continues throughout the site, and throughout the years, as required. Please refer to the online report and the mine site map for areas and acreages.

#### **Groundwater Monitoring**

Analysis of the groundwater monitoring data shows that the groundwater levels in the wells around the Carbon Valley Resource site have either remained within their baseline ranges every month, or have fluctuated slightly outside their baseline ranges - but have not adversely affected anyone, so there are no compliance issues. We continue to monitor all groundwater monitoring wells on a monthly basis.

Monitoring Wells MW01, MW02, MW03, MW06 have stayed within their baseline ranges every month and so are in compliance.

Monitoring Wells MW04, MW05, MW07 had slight fluctuations outside their baseline ranges, but the fluctuations did not adversely affect any neighbors, so there are no compliance issues.

Monitoring Well MW04 fluctuated slightly in and out of baseline range in 2021 and 2022. However, this well is located outside of the mining area, on the south side of the Last Chance Ditch, and not near any homes. Our mining activity is not very close to this well, and on the opposite side of a large irrigation ditch, so our mining is most likely not the cause of the fluctuations. As a note, the Town of Firestone has been working near the well, constructing diversion systems for their water storage reservoir to the east. No one has been adversely affected by the fluctuations, so there are no compliance issues.



L.G. EVERIST, INC.

ROCK SOLID SINCE 1876

7321 E. 88TH AVENUE, SUITE 200

HENDERSON, COLORADO 80640

PHONE 303-287-9606 • FAX 303-289-1348

**RE: DRMS Annual Report - Carbon Valley Resource, Permit M-2001-017**  
**Anniversary Date: September 19**

Monitoring Well MW05 had four months slightly out of its baseline range (Dec2021-Mar-2022), but has been within its baseline range ever since. The well is located over 1000 feet away from the current permit area, and on the far side of a lined water storage reservoir that has been released from this permit, so any fluctuations in groundwater levels could not be caused by mining activity. The Town of Firestone has been developing the (released) reservoir for its use as a town water storage reservoir. The fluctuations did not adversely affected any neighbors. Therefore, there are no compliance issues.

Monitoring Well MW07 well has recently gone slightly out of its baseline range - the groundwater levels are slightly higher than usual, likely due to water reservoir work on the north side of the road. The only building located near this well is the permittee's office/scale-house and the slight fluctuations are not adversely affecting us or any neighbors. Therefore, there are no compliance issues.

Please see the following pages for the groundwater monitoring data and monitoring well map.

If you have questions, feel free to contact me via phone (cell-303-514-2778, office-303-286-2247) or email (lmshults@lgeverist.com).

Sincerely,

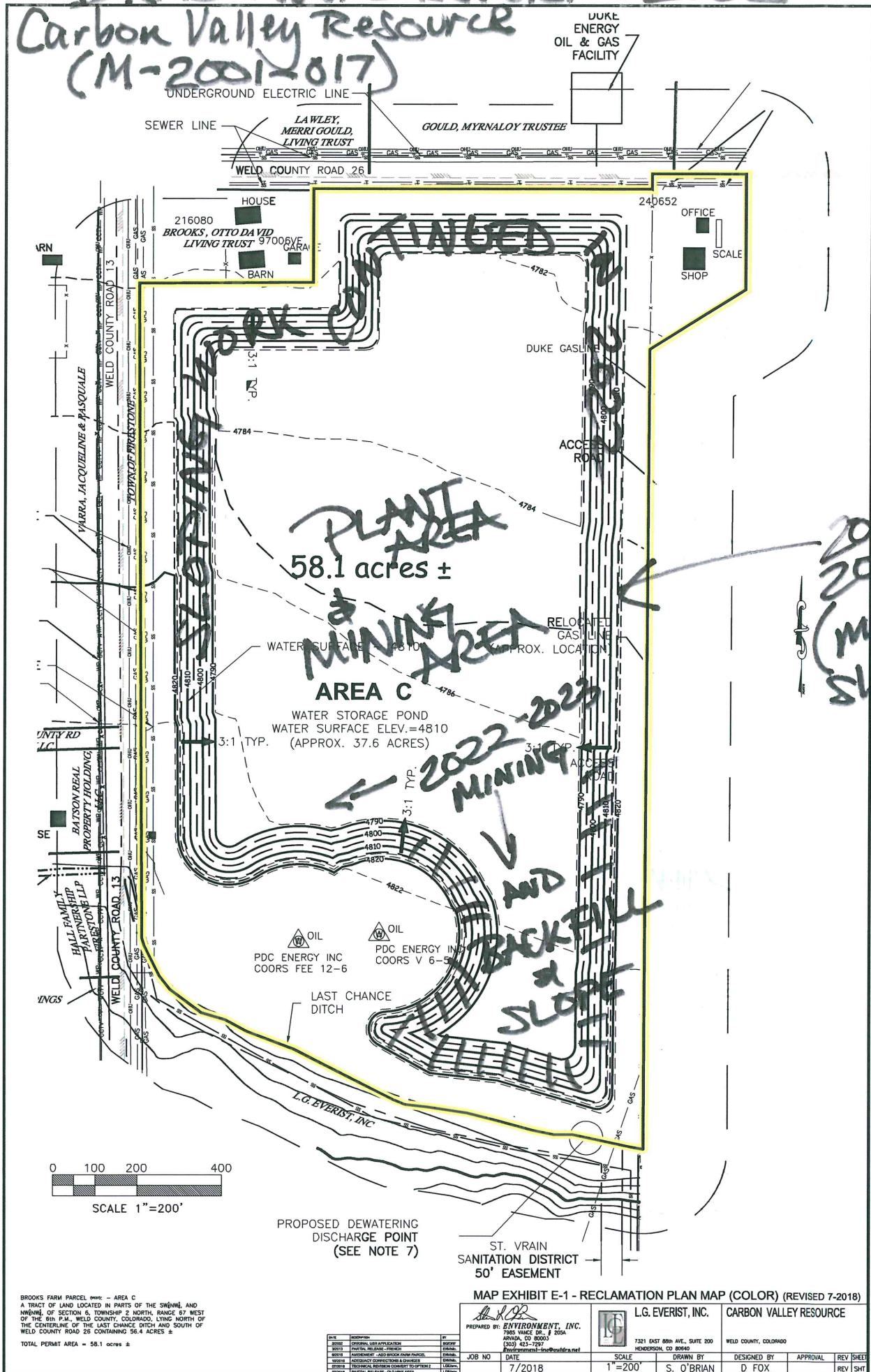
Lynn Mayer Shults  
Regulatory Manager

*Attachments:*

- Carbon Valley Resource - Exhibit E-1, Reclamation Plan Map
- Groundwater Monitoring Data
- Groundwater Monitoring Well Map

# DRMS ANNUAL REPORT 2022

## Carbon Valley Resource (M-2001-017)



# L.G. Everist, Inc. - Carbon Valley Resource (M-2001-017) - Groundwater Monitoring Well Data

MONITOR WELL NO.	MW-01	MW-02	MW-03	MW-04	MW-05	MW-06	MW-07
NORTHING, FT	1,307,353.84	1,306,390.31	1,305,531.41	1,305,207.10	1,306,084.75	1,307,521.49	1,307,522.07
EASTING, FT	3,156,990.45	3,156,962.85	3,156,965.85	3,157,915.49	3,159,231.68	3,159,255.52	3,158,242.86
ELEVATION (TOG), FT	4,814.364	4,820.651	4,824.874	4,827.098	4,819.53	4,819.87	4,816.45
CASING HEIGHT, FT	4.34	2.48	(2.59)	2.45	2.56	2.22	2.70
ELEVATION (TOC), FT	4,818.702	4,823.127	4,822.280	4,829.552	4,822.10	4,822.09	4,819.15
	MW-01	MW-02	MW-03	MW-04	MW-05	MW-06	MW-07
HIGH (max of first 2 yrs + 2)	4,812.60	4,816.83	4,819.18	4,820.95	4,816.25	4,807.19	4,800.35
LOW (min of first 2 yrs - 2)	4,800.50	4,804.83	4,812.98	4,816.30	4,811.20	4,801.57	4,790.65

2021	01/20/21	4,807.75	4,807.72	4,813.40	4,817.01	4,813.02	4,803.47	4,792.33
	02/26/21	4,807.69	4,807.74	4,813.45	4,816.64	4,812.71	4,803.15	4,793.76
	03/12/21	4,807.64	4,807.72	4,814.13	4,816.61	4,812.62	4,803.00	4,792.55
	04/29/21	4,807.58	4,807.52	4,812.29	4,816.25	4,812.71	4,803.00	4,791.75
	05/21/21	4,808.57	4,807.41	4,812.20	4,816.26	4,812.86	4,803.50	4,792.47
	06/07/21	4,808.82	4,807.84	4,812.26	4,816.31	4,813.12	4,804.15	4,793.30
	07/16/21	4,810.96	4,808.84	4,812.69	4,816.33	4,813.71	4,805.00	4,794.79
	08/20/21	4,810.16	4,808.94	4,812.58	4,816.44	4,814.31	4,805.37	4,794.44
	09/17/21	4,811.19	4,808.55	4,811.44	4,816.11	4,813.63	4,804.56	4,793.98
	10/26/21	4,809.45	4,807.55	4,811.19	4,815.98	4,813.51	4,804.38	4,793.77
	11/29/21	4,807.95	4,806.41	4,811.03	4,815.97	4,813.21	4,804.84	4,793.26
	Dec-2021 (average of Nov-2021 & Jan-2022)	4,807.67	4,805.78	4,810.95	4,815.94	4,810.27	4,803.82	4,792.66
2022	01/21/22	4,807.39	4,805.16	4,810.87	4,815.91	4,807.34	4,802.81	4,792.05
	02/09/22	4,807.34	4,805.12	4,810.82	4,815.69	4,806.91	4,802.38	4,791.70
	03/14/22	4,807.24	4,805.02	4,810.69	4,815.46	4,806.82	4,802.00	4,791.20
	04/26/22	4,807.97	4,813.11	4,813.79	4,816.31	4,811.82	4,802.27	4,791.46
	05/18/22	4,808.97	4,815.21	4,815.03	4,816.67	4,812.57	4,803.10	4,790.69
	06/20/22	4,809.37	4,814.57	4,814.82	4,814.47	4,813.05	4,804.13	4,801.37
	07/20/22	4,810.61	4,815.60	4,814.12	4,812.12	4,813.27	4,805.04	4,803.85
	08/30/22	4,810.54	4,814.82	4,813.86	4,812.06	4,813.36	4,805.76	4,805.59

L.G. Everist, Inc. - Carbon Valley Resource (M-2001-017) - Groundwater Monitoring Well Map

