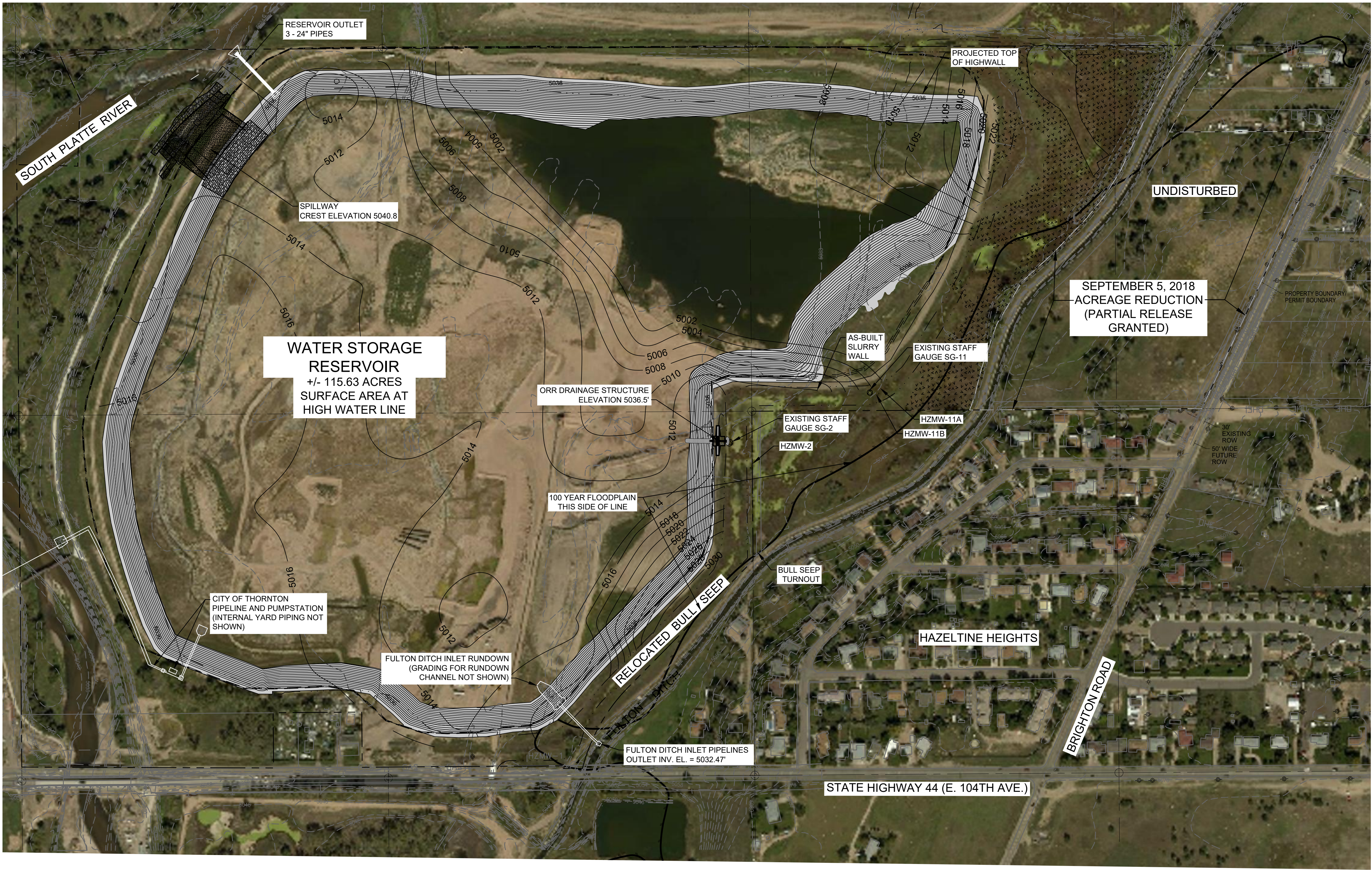
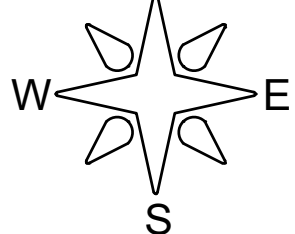


8/16/2021 2:25:35 PM - O:\PROJECTS\LONGMONT\707117-7707008\CAD\SHEETFILES\EXH-1_MONITORING 2021.DWG - ANDRYALUSKAS, JEREMY



HAZELTINE MINE MLRB 112 PERMIT RECLAMATION MAP

A TRACT OF LAND LOCATED IN THE
SOUTH HALF OF SECTION 9, TOWNSHIP
2 SOUTH, RANGE 67 WEST OF THE 6TH
P.M., COUNTY OF ADAMS, STATE OF
COLORADO. CONTAINING 184.9+/-
ACRES

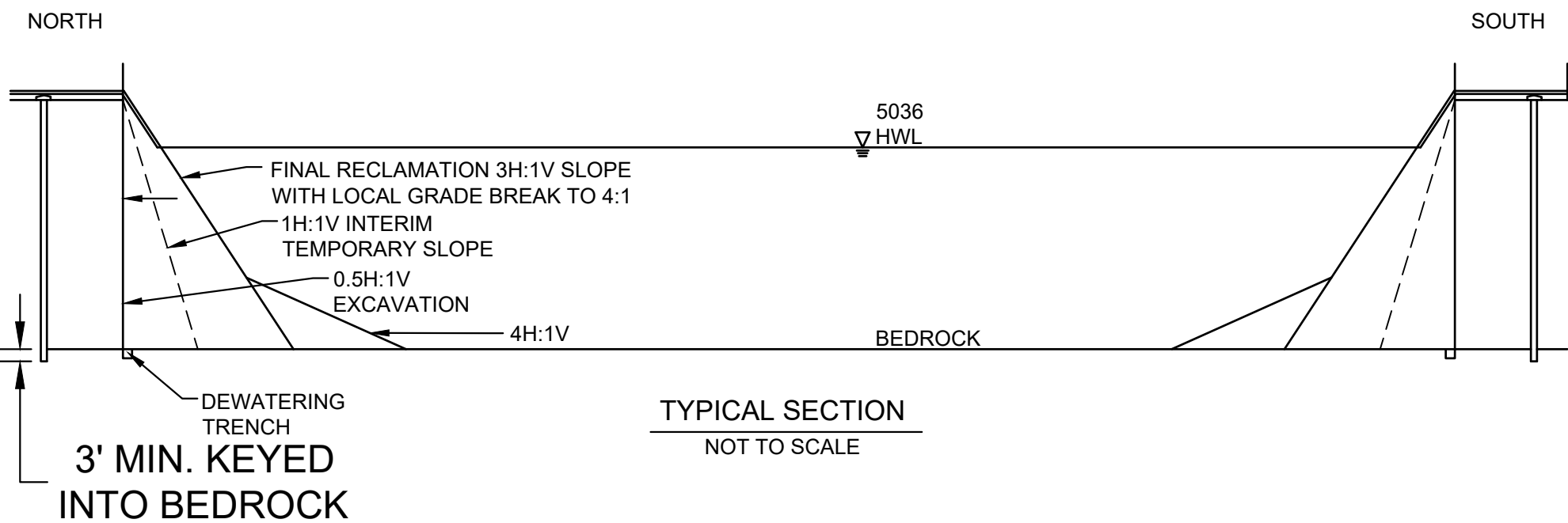


SCALE: 1"=200'

LEGEND:

- PROPERTY BOUNDARY/
PERMIT BOUNDARY
- APPROXIMATE BEDROCK
CONTOUR
- PRE-MINING 2' CONTOUR
- SLURRY WALL
- APPROXIMATE HIGH WATER
LINE OF RECLAIMED POND
- U.S. ARMY CORP OF ENGINEERS
MAPPED WETLAND 404 PERMIT
NO. 199980194
- 100 YEAR FLOODPLAIN BY FLOOD
INSURANCE RATE MAP, ADAMS COUNTY,
COLORADO, PANEL 319
- STAFF GAUGE
- MONITORING WELL

NOTE: CONSTRUCTION OF RESERVOIR INFRASTRUCTURE
TO BE SUBSTANTIALLY COMPLETE BY SEPTEMBER 30, 2021.
RESERVOIR WILL BEGIN FILLING AFTER DRMS PERMIT IS
RELEASED.



www.tetratech.com
1900 South Sunset Street, Suite 1-E
Longmont, Colorado 80501
Phone: 303-772-5282 Fax: 303-772-7039

MARK	DATE	DESCRIPTION	BY

AGGREGATE INDUSTRIES
M-2004-031 AM-01 EXHIBIT
RESERVOIR OUTLET
AND SPILLWAY

Project No.: 117-7707008
Designed By:
Drawn By:
Checked By:

EXH-1

IMAGE COURTESY OF USGS EARTHSTAR GEOGRAPHICS SIO 2016 MICROSOFT CORPORATION BING.

Bar Measures 1 inch

Copyright: Tetra Tech