



L.G. EVERIST, INC.
ROCK SOLID SINCE 1876

7321 E. 88TH AVENUE, SUITE 200
HENDERSON, COLORADO 80640
PHONE 303-287-9606 • FAX 303-289-1348

August 4, 2022

Division of Reclamation, Mining and Safety
1313 Sherman Street, Room 215
Denver, CO 80203

RE: DRMS Annual Fee and Report for M-1996-052, Firestone Gravel Resource
Permittee Name: L.G. Everist, Inc.
Anniversary: August 4

Dear Division:

The DRMS Annual Report for Firestone Gravel Resource, DRMS Permit # M-1996-052, has been submitted online. Included with this letter are the attachments for the online DRMS Annual Report. The annual fee has been paid online with a credit card (\$791 + processing fees).

The attached **Firestone Gravel Resource Mining Plan Map** shows the various areas of mining and reclamation noted in the Annual Report. The mining map shows active mining areas, reclaimed areas (mining completed, sloping and re-vegetation done), future mining areas, processing plant, and settling ponds. Weeds are controlled with mowing and spraying throughout the growing seasons.

This past year, mining occurred in the same areas (Area 3, Area 5) as last year. In Area 3, mining is completed in the northern section, and we plan to get the northern perimeter backfilled and sloped in the coming year. In the next year, we plan to mine in the eastern portion of Area 3, and continue mining expansion in Area 5. As always, the rate of mining new areas depends on the market and natural conditions (depth and quality of the natural deposit, and weather).

Groundwater Monitoring Report - We are submitting groundwater monitoring data and calculations covering this year's reporting period (August 2021 to July 2022). Analysis of the data showed that groundwater levels have remained in compliance with the baseline ranges, determined by comparing the current data's mon-to-mon-changes against the baseline data's mon-to-mon average change +/- 5-feet, as per the permit. Only one exterior well, MW-03, went out of its baseline range - slightly, and for only 1 month. This variance could be related to changes in irrigation, roadside ditches outside our property, or the weather. The variance did not adversely affect any neighbors. And one interior well, MW-10, was mined through and is now gone. Because MW-10 is interior to the mining operation, data from this well would only indicate groundwater level changes within the mining operation. There were no groundwater compliance issues throughout the reporting year.

If you have questions, feel free to contact me at 303-286-2247, or lmshults@lgeverist.com.

Sincerely,


Lynn Mayer Shults
Regulatory Manager

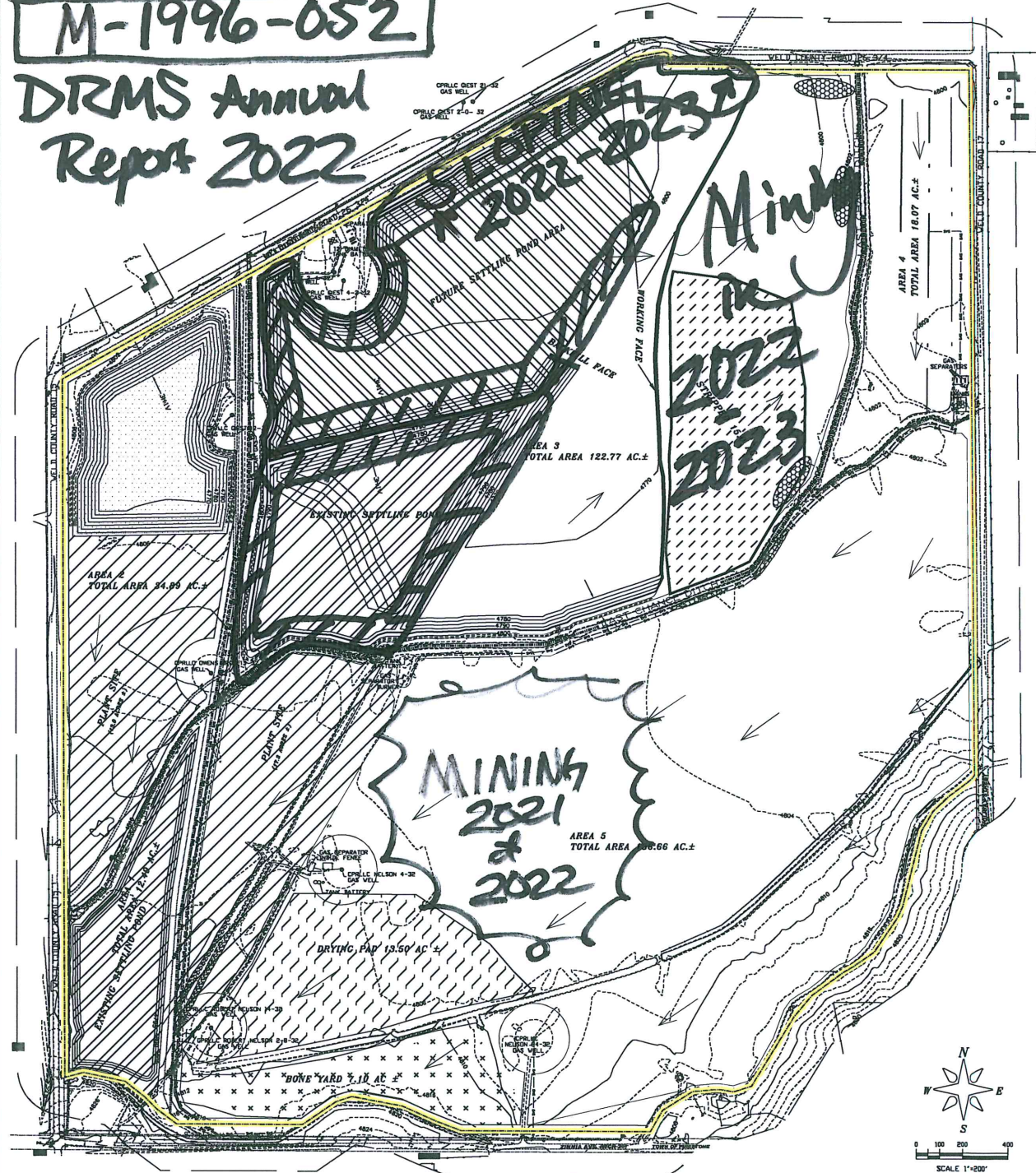
Attached:

- Annual Report Map – mining and reclamation areas
- Ground Water Monitoring Report – data and map

FIRESTONE GRAVEL RESOURCE

M-1996-052

DRMS Annual
Report 2022



Sloping done

LEGEND

PERMIT LINE/AFFECTED LANDS	PLANT SITE
AREA LINE	LAKE
200 FOOT	STRIPPED
DITCH	BONE YARD
ROADS	DRYING PAD/ GROWTH MEDIUM STORAGE
PAVED ROAD	SETTLING POND
BE BE	PROPOSED SETTLING POND
BURIED ELECTRIC	
OVERHEAD COMMUNICATIONS	
OVERHEAD ELECTRIC	
FENCE	
GASLINE	
GAS/OIL WELL	
BUILDING	
TEMPORARY TOPSOIL PILE	
ESTIMATED DIRECTION OF MINING	

Parts of the SW $\frac{1}{4}$ NE $\frac{1}{4}$, NW $\frac{1}{4}$ SE $\frac{1}{4}$, NE $\frac{1}{4}$ SW $\frac{1}{4}$, SE $\frac{1}{4}$ SW $\frac{1}{4}$ SW $\frac{1}{4}$ SW $\frac{1}{4}$,
NE $\frac{1}{4}$ NW $\frac{1}{4}$, SE $\frac{1}{4}$ NW $\frac{1}{4}$ SW $\frac{1}{4}$ NW $\frac{1}{4}$ and NW $\frac{1}{4}$ NW $\frac{1}{4}$, Sec 32, T-3-N,
R-67-W of the 6th P.M., County of Weld, State of Colorado

Map Exhibit C-1 - Mining Plan Map

PREPARED BY: ENVIRONMENT, INC.
7000 VANCE BL. # 200A
DENVER, CO 80203
(303) 482-7000
environment@environmentinc.com

AMENDMENT
FOR
FIRESTONE GRAVEL RESOURCE
PERMIT # M-1996-052

DATE	DESCRIPTION	BY
1/15/2019	ORIGINAL PERMIT FILED	CHAS BRIS
1/17/2019	AMENDMENT TO ADD SETTLING POND	CHAS BRIS
8/27/2019	ADD FLOOD PLANE LINE	CHAS BRIS
3/1/2013	REVISION FLOOD PLANE LINE	CHAS BRIS
1/15/2019	REVISION FLOOD PLANE LINE	CHAS BRIS
5/14/2019	AMENDMENT TO ADD SETTLING POND	CHAS BRIS
5/14/2019	AMENDMENT TO ADD SETTLING POND	CHAS BRIS



L.G. Everist, Inc.
7321 EAST 88TH AVENUE | HENDERSON, COLORADO 80640
PHONE: (303) 287-4656 | FAX: (303) 289-1348

DATE	SCALE	BY	DATE
1/15/2019	1"=200'	CHAS BRIS	1/15/2019
8/27/2019	1"=200'	CHAS BRIS	8/27/2019
3/1/2013	1"=200'	CHAS BRIS	3/1/2013
1/15/2019	1"=200'	CHAS BRIS	1/15/2019
5/14/2019	1"=200'	CHAS BRIS	5/14/2019

L.G. Everist, Inc. - Firestone Gravel Resource (M-1996-052) - GROUNDWATER MONITORING REPORT

ELEVATION DATA <small>Note: Elevations derived from the field Measurements (see worksheet 1) and the Elevation (TOC) of each MW</small>																
MONITOR WELL NO.	MW-01	MW-02 (gone - Aug-2017)	MW-03	MW-04	MW-05	MW-06 (gone Jun-2014)	MW-07	MW-09 (gone Sep-2013)	MW-10 (gone - Jun-2021)	MW-11 (gone Sep-2015)	MW-12	MW-13 (gone Feb-2020)	MW-14 (gone Feb-2020)	MW-15	MW-16	Accord
NORTHING, FT	1,307,909.50	1,309,751.93	1,312,173.59	1,309,691.51	1,308,177.33	1,308,132.31	1,311,086.36	1,308,703.68	1,308,922.41	1,309,498.47	1,309,482.41	1,311,896.53	1,311,760.15	1,307,645.42	1,307,795.67	1,311,737.65
EASTING, FT	3,162,454.93	3,163,486.50	3,165,870.74	3,165,916.29	3,165,934.69	3,162,338.25	3,162,480.59	3,162,729.80	3,163,085.25	3,163,226.77	3,163,363.55	3,164,613.07	3,164,646.53	3,164,713.64	3,163,414.26	3,164,677.66
ELEVATION (TOG), FT	4,810.13	4,806.39	4,799.87	4,802.43	4,836.24			4,805.05	4,804.48	4,805.02	4,804.59	4,797.56	4,797.23	4,818.59	4,815.48	4,799.75
CASING HEIGHT, FT	3.32	3.28	3.03	2.36	3.02			2.67	2.58	2.75	3.08	3.00	3.00	3.63	3.01	2.85
ELEVATION (TOC), FT	4,812.71	4,809.31	4,802.62	4,805.13	4,839.21	4,812.56	4,806.93	4,807.72	4,807.06	4,807.77	4,807.67	4,800.56	4,800.23	4,822.22	4,818.50	4,802.59
	exterior	interior	exterior	exterior	exterior	interior	exterior	interior	interior	interior	interior	interior (Aug-2019)	interior	exterior	exterior	exterior

Groundwater Monitoring Calculations - 2021 and 2022 - to Determine Compliance with Baseline Monitoring

DRMS Annual Report - Aug-2022

data from 2021 and 2022

Groundwater Monitoring Plan - notes from Adequacy Response #2 (August-2010)

- Determining Compliance From AR-2, "LGE proposes implementing corrective actions when groundwater levels at exterior monitoring holes [see #3] have dropped 5 feet or more from the monthly average drop [see #4] established during monitoring [see #2]."
- Monitoring Period - Baseline monitoring period is 2006-2010, pre-LGE operations for wells MW-01 to MW-14. Baseline monitoring period for MW-15, MW-16, Accord - is Jun-2017 to May-2019.
- Exterior Monitoring Wells - are on the edges of the site, or off-site, and are **BOLDED**. Exterior wells are MW-01, MW-03, MW-04, MW-05, MW-07, and new wells - MW-15, MW-16, and Accord (house well).
- Mon-to-Mon Average Change +/- (baseline) to incorporate both drops and increases (formerly called "monthly average drop")
 - Mon-to-Mon Average Changes +/- (baseline) were calculated by using the each relevant month-to-month change over each of the baseline years.
 - 5-feet - added to the Mon-to-Mon Average Changes +/- (baseline) to get the Mon-to-Mon Average Changes +/- with 5-feet added (baseline).

Determining Compliance with Groundwater Monitoring Plan

- Using current data, calculate the "Month-to-Month Change" in groundwater levels using monthly data for each well.
- Month-to-Month Changes that are (=) or (<) the "Mon-to-Mon Average Change +/- with 5-feet Added (baseline)" are in compliance. If the changes are greater, they are out of compliance and in **red / shaded**

2021 - Mon-to-Mon Change	MW-01	MW-02	MW-03	MW-04	MW-05	MW-06	MW-07	MW-09	MW-10	MW-11	MW-12	MW-13	MW-14	MW-15	MW-16	Accord
January-February	0.23	gone	2.14	0.11	0.49	gone	-0.45	gone	0.14	gone	0.10	gone	gone	1.51	0.25	-0.08
February-March	0.19	gone	1.78	0.08	0.72	gone	0.73	gone	0.19	gone	-1.03	gone	gone	0.71	0.23	1.11
March-April	0.72	gone	1.36	0.30	0.46	gone	-0.58	gone	1.13	gone	2.86	gone	gone	0.28	0.50	0.19
April-May	-1.84	gone	-0.04	-0.96	-0.35	gone	-1.32	gone	-0.68	gone	-1.04	gone	gone	-2.37	-1.49	-1.41
May-June	-2.16	gone	-0.80	0.09	-0.60	gone	0.90	gone	mined out	gone	1.58	gone	gone	-0.18	-1.69	-1.76
June-July	0.14	gone	-8.07	-0.45	-0.97	gone	-1.17	gone	gone	gone	3.48	gone	gone	-1.74	0.28	-2.29
July-August	0.67	gone	-0.12	-0.18	-0.63	gone	0.05	gone	gone	gone	-1.06	gone	gone	0.32	0.72	-0.42
August-September	-0.44	gone	-2.93	0.93	-0.14	gone	1.72	gone	gone	gone	3.54	gone	gone	0.26	0.18	-0.03
September-October	1.74	gone	-1.34	0.41	0.25	gone	-0.91	gone	gone	gone	-0.15	gone	gone	0.47	0.80	-2.93
October-November	1.12	gone	2.45	0.44	0.65	gone	1.11	gone	gone	gone	-0.18	gone	gone	1.37	0.93	2.66
November-December	0.11	gone	1.55	0.18	0.59	gone	-0.05	gone	gone	gone	-1.24	gone	gone	1.31	0.42	1.46
December-January	0.11	gone	1.54	0.18	0.58	gone	-0.05	gone	gone	gone	-1.25	gone	gone	1.30	0.41	1.45

2022 - Mon-to-Mon Change	MW-01	MW-02	MW-03	MW-04	MW-05	MW-06	MW-07	MW-09	MW-10	MW-11	MW-12	MW-13	MW-14	MW-15	MW-16	Accord
January-February	-0.03	gone	0.80	0.41	0.57	gone	0.06	gone	gone	gone	0.42	gone	gone	-0.15	0.49	-0.22
February-March	1.54	gone	-0.23	0.45	0.40	gone	0.25	gone	gone	gone	1.80	gone	gone	1.12	0.68	-0.29
March-April	0.42	gone	-1.72	0.71	0.33	gone	0.68	gone	gone	gone	0.16	gone	gone	0.72	0.66	0.02
April-May	-2.64	gone	-2.16	-0.01	-0.39	gone	-1.28	gone	gone	gone	-1.15	gone	gone	-2.46	-2.35	-1.04
May-June	-0.04	gone	1.55	0.17	-2.85	gone	-0.63	gone	gone	gone	0.85	gone	gone	-1.04	-0.47	-0.38
June-July		gone				gone		gone	gone	gone		gone	gone			
July-August																
August-September																
September-October																
October-November																
November-December																
December-January																

DRMS Annual Report 2022 - Groundwater Monitoring Report & Well Map

We are submitting groundwater monitoring data and calculations covering this past year's reporting (2021 - 2022). Analysis of the data showed that groundwater levels have remained in compliance with the baseline ranges, determined by comparing the current data's mon-to-mon-changes against the baseline data's mon-to-mon average change +/- 5-feet, as noted above. Only one exterior well, MW-03, went out of its baseline range for 1 month. This variance could be related to changes in irrigation, or roadside ditches outside our property. The variance did not adversely affect any neighbors. Therefore, there are no compliance issues. Also, one interior well (MW-10) was mined out in June-2021.

L.G. Everist, Inc. - Firestone Gravel Resource (M-1996-052) - GROUNDWATER MONITORING REPORT

ELEVATION DATA <small>Note: Elevations derived from the field Measurements (see worksheet 1) and the Elevation (TOC) of each MW</small>																
MONITOR WELL NO.	MW-01	MW-02 (gone Aug-2017)	MW-03	MW-04	MW-05	MW-06 (gone Jun-2014)	MW-07	MW-09 (gone Sep-2013)	MW-10 (gone Jun-2021)	MW-11 (gone Sep-2015)	MW-12	MW-13 (gone Feb-2020)	MW-14 (gone Feb-2020)	MW-15	MW-16	Accord
NORTHING, FT	1,307,909.50	1,309,751.93	1,312,173.59	1,309,691.51	1,308,177.33	1,308,132.31	1,311,086.36	1,308,703.68	1,308,922.41	1,309,498.47	1,309,482.41	1,311,896.53	1,311,760.15	1,307,645.42	1,307,795.67	1,311,737.65
EASTING, FT	3,162,454.93	3,163,486.50	3,165,870.74	3,165,916.29	3,165,934.69	3,162,338.25	3,162,480.59	3,162,729.80	3,163,085.25	3,163,226.77	3,163,363.55	3,164,613.07	3,164,646.53	3,164,713.64	3,163,414.26	3,164,677.66
ELEVATION (TOG), FT	4,810.13	4,806.39	4,799.87	4,802.43	4,836.24			4,805.05	4,804.48	4,805.02	4,804.59	4,797.56	4,797.23	4,818.59	4,815.48	4,799.75
CASING HEIGHT, FT	3.32	3.28	3.03	2.36	3.02			2.67	2.58	2.75	3.08	3.00	3.00	3.63	3.01	2.85
ELEVATION (TOC), FT	4,812.71	4,809.31	4,802.62	4,805.13	4,839.21	4,812.56	4,806.93	4,807.72	4,807.06	4,807.77	4,807.67	4,800.56	4,800.23	4,822.22	4,818.50	4,802.59
	exterior	interior	exterior	exterior	exterior	interior	exterior	interior	interior	interior	interior	interior (Aug-2019)	interior	exterior	exterior	exterior

Groundwater Monitoring - Baseline Data and Ranges <small>NOTE: Baseline monitoring period for MW-01 to MW-14 is 2006-2010 (pre-LGE operations).</small>														<small>Baseline period for MW-15, -16, Accord's is Jun-2017 to May-2019.</small>		
MONITOR WELL NO.	MW-01	MW-02 (gone)	MW-03	MW-04	MW-05	MW-06 (gone)	MW-07	MW-09 (gone)	MW-10 (gone Jun-2021)	MW-11 (gone)	MW-12	MW-13 (gone)	MW-14 (gone)	MW-15	MW-16	Accord
ANNUAL - Average Elevation	4,805.17	4,800.50	4,795.21	4,799.92	4,808.53	4,804.81	4,796.20	4,802.14	4,801.77	4,801.39	4,801.01	4,795.29	4,795.27	4,808.51	4,805.98	4,777.07
Highest Elevation (bolded above)	4,808.31	4,804.69	4,798.75	4,801.56	4,810.77	4,807.11	4,798.00	4,803.42	4,804.66	4,804.85	4,804.22	4,797.96	4,795.92	4,805.77	4,807.80	4,784.19
Lowest Elevation (bolded above)	4,802.29	4,797.81	4,792.37	4,798.13	4,805.94	4,802.11	4,794.49	4,800.27	4,799.72	4,798.57	4,798.74	4,793.99	4,794.28	4,810.42	4,804.00	4,772.89
Max Change (= High - Low)	6.02	6.88	6.38	3.43	4.83	5.00	3.51	3.15	4.94	6.28	5.48	3.97	1.64	-4.65	3.80	11.30

Mon-to-Mon Average Elevation (baseline) <small>NOTE: Calculated from Elevation Data for each month in baseline period of 2006-2010.</small>														<small>new wells in 2021 rpt</small>		
January	4,803.55	4,798.90	4,793.67	4,799.35	4,808.38	4,804.41	4,795.66	4,802.12	4,801.58	4,800.62	4,800.67	4,794.86	4,795.13	4,807.37	4,805.10	4,776.14
February	4,803.56	4,798.83	4,793.48	4,799.16	4,807.82	4,803.63	4,795.53	4,801.21	4,800.57	4,799.49	4,799.62	4,794.41	4,794.77	4,806.67	4,804.82	4,775.79
March	4,803.50	4,798.90	4,793.86	4,799.22	4,807.38	4,802.98	4,795.06	4,801.21	4,800.60	4,799.46	4,799.61	4,794.49	4,794.81	4,806.37	4,804.62	4,774.84
April	4,803.30	4,798.69	4,793.68	4,798.99	4,806.96	4,802.88	4,795.02	4,801.07	4,800.53	4,799.46	4,799.61	4,794.55	4,794.86	4,807.17	4,804.52	4,774.84
May	4,804.32	4,800.46	4,794.57	4,799.69	4,807.07	4,804.12	4,795.85	4,802.68	4,802.33	4,801.60	4,801.81	4,795.54	4,795.91	4,806.99	4,806.17	4,775.34
June	4,805.59	4,801.67	4,795.35	4,800.28	4,807.35	4,804.84	4,796.33	4,802.65	4,802.21	4,801.89	4,802.06	4,795.87	4,795.74	4,808.19	4,806.40	4,779.89
July	4,806.58	4,802.53	4,797.88	4,801.05	4,808.29	4,806.45	4,796.97	4,803.42	4,802.86	4,803.44	4,802.54	4,796.46	4,795.56	4,809.29	4,806.87	4,778.02
August	4,807.95	4,803.90	4,798.01	4,801.11	4,809.38	4,807.11	4,797.94	-	-	4,804.56	-	-	-	4,811.32	4,807.40	4,782.49
September	4,807.23	4,802.80	4,797.98	4,800.63	4,809.87	4,806.68	4,797.30	-	4,804.66	4,804.29	4,804.22	4,797.96	-	4,811.59	4,807.60	4,781.29
October	4,806.27	4,800.59	4,795.34	4,800.07	4,809.96	4,805.63	4,796.27	4,802.95	4,802.50	4,801.60	4,801.63	4,795.40	4,795.65	4,809.74	4,806.77	4,775.67
November	4,805.18	4,799.75	4,794.56	4,799.93	4,809.59	4,804.91	4,796.02	4,802.53	4,801.93	4,800.79	4,800.89	4,795.24	4,795.03	4,809.14	4,805.82	4,775.17
December	4,804.64	4,799.43	4,794.36	4,799.79	4,809.11	4,804.45	4,795.82	4,802.23	4,801.65	4,800.57	4,800.69	4,795.19	4,795.31	4,808.34	4,805.60	4,775.37

Mon-to-Mon Average Change +/- (baseline) <small>NOTE: Calculated with ABSOLUTE VALUES during the baseline period of 2006-2010, so the Average Change is for both (+) and (-).</small>														<small>new wells in 2021 rpt</small>		
January-February	0.36	0.26	0.19	0.19	0.56	0.39	0.06	0.20	0.24	0.33	0.30	0.05	0.04	0.70	0.27	0.40
February-March	0.19	0.17	0.49	0.14	0.44	0.09	0.00	0.03	0.02	0.03	0.01	0.03	0.07	0.30	0.20	0.95
March-April	0.26	0.43	0.32	0.27	0.42	0.28	0.05	0.34	0.35	0.42	0.43	0.24	0.19	0.90	0.15	0.65
April-May	0.62	1.19	0.44	0.47	0.17	1.24	0.83	1.61	1.80	2.14	2.20	0.98	1.05	1.78	1.65	0.55
May-June	1.01	1.47	0.42	0.53	0.31	0.72	0.48	0.10	0.44	1.09	1.30	0.34	0.17	1.45	0.60	2.00
June-July	1.77	0.86	2.54	0.48	0.75	1.61	0.64	0.32	0.34	1.55	0.55	0.45	0.17	1.10	0.57	2.72
July-August	1.38	1.51	0.35	0.08	0.78	0.09	0.97	0.00	0.00	1.18	0.00	0.00	0.00	2.03	0.53	4.48
August-September	0.72	1.51	0.21	0.55	0.48	0.08	0.64	0.00	0.00	0.28	0.00	0.00	0.00	0.32	0.20	1.20
September-October	0.81	2.05	2.59	0.86	0.14	1.05	1.03	0.00	1.20	1.49	1.44	1.23	0.00	1.85	0.82	5.63
October-November	1.19	0.98	0.81	0.30	0.42	0.72	0.25	0.41	0.57	0.81	0.75	0.16	0.62	0.60	0.95	0.95
November-December	0.52	0.35	0.31	0.18	0.43	0.46	0.20	0.30	0.28	0.22	0.20	0.12	0.28	0.80	0.23	1.05
December-January	0.51	0.39	0.42	0.38	0.63	0.31	0.23	0.23	0.24	0.22	0.24	0.36	0.34	0.97	0.50	1.32



Mon-to-Mon Average Change +/- with 5-feet Added (baseline) <small>NOTE: For compliance, FUTURE mon-to-mon MW changes must stay within the Mon-to-Mon Average Changes (+/-5).</small>														<small>new wells in 2021 rpt</small>		
January-February	5.36	5.26	5.19	5.19	5.56	5.39	5.06	5.20	5.24	5.33	5.30	5.05	5.04	5.70	5.27	5.40
February-March	5.19	5.17	5.49	5.14	5.44	5.09	5.00	5.03	5.02	5.03	5.01	5.03	5.07	5.30	5.20	5.95
March-April	5.26	5.43	5.32	5.27	5.42	5.28	5.05	5.34	5.35	5.42	5.43	5.24	5.19	5.90	5.15	5.65
April-May	5.62	6.19	5.44	5.47	5.17	6.24	5.83	6.61	6.80	7.14	7.20	5.98	6.05	6.78	6.65	5.55
May-June	6.01	6.47	5.42	5.53	5.31	5.72	5.48	5.10	5.44	6.09	6.30	5.34	5.17	6.45	5.60	7.00
June-July	6.77	5.86	7.54	5.48	5.75	6.61	5.64	5.32	5.34	6.55	5.55	5.45	5.17	6.10	5.57	7.72
July-August	6.38	6.51	5.35	5.08	5.78	5.09	5.97	5.00	5.00	6.18	5.00	5.00	5.00	7.03	5.53	9.48
August-September	5.72	6.51	5.21	5.55	5.48	5.08	5.64	5.00	5.00	5.28	5.00	5.00	5.00	5.32	5.20	6.20
September-October	5.81	7.05	7.59	5.86	5.14	6.05	6.03	5.00	6.20	6.49	6.44	6.23	5.00	6.85	5.82	10.63
October-November	6.19	5.98	5.81	5.30	5.42	5.72	5.25	5.41	5.57	5.81	5.75	5.16	5.62	5.60	5.95	5.95
November-December	5.52	5.35	5.31	5.18	5.43	5.46	5.20	5.30	5.28	5.22	5.20	5.12	5.28	5.80	5.23	6.05
December-January	5.51	5.39	5.42	5.38	5.63	5.31	5.23	5.23	5.24	5.22	5.24	5.36	5.34	5.97	5.50	6.32

L.G. Everist, Inc. - Firestone Gravel Resource (M-1996-052) - GROUNDWATER MONITORING REPORT

ELEVATION DATA <small>Note: Elevations derived from the field Measurements (see worksheet 1) and the Elevation (TOC) of each MW</small>																
MONITOR WELL NO.	MW-01	MW-02 (gone - Aug-2017)	MW-03	MW-04	MW-05	MW-06 (gone Jun-2014)	MW-07	MW-09 (gone Sep-2013)	MW-10 (gone - Jun-2021)	MW-11 (gone Sep-2015)	MW-12	MW-13 (gone Feb-2020)	MW-14 (gone Feb-2020)	MW-15	MW-16	Accord
NORTHING, FT	1,307,909.50	1,309,751.93	1,312,173.59	1,309,691.51	1,308,177.33	1,308,132.31	1,311,086.36	1,308,703.68	1,308,922.41	1,309,498.47	1,309,482.41	1,311,896.53	1,311,760.15	1,307,645.42	1,307,795.67	1,311,737.65
EASTING, FT	3,162,454.93	3,163,486.50	3,165,870.74	3,165,916.29	3,165,934.69	3,162,338.25	3,162,480.59	3,162,729.80	3,163,085.25	3,163,226.77	3,163,363.55	3,164,613.07	3,164,646.53	3,164,713.64	3,163,414.26	3,164,677.66
ELEVATION (TOG), FT	4,810.13	4,806.39	4,799.87	4,802.43	4,836.24			4,805.05	4,804.48	4,805.02	4,804.59	4,797.56	4,797.23	4,818.59	4,815.48	4,799.75
CASING HEIGHT, FT	3.32	3.28	3.03	2.36	3.02			2.67	2.58	2.75	3.08	3.00	3.00	3.63	3.01	2.85
ELEVATION (TOC), FT	4,812.71	4,809.31	4,802.62	4,805.13	4,839.21	4,812.56	4,806.93	4,807.72	4,807.06	4,807.77	4,807.67	4,800.56	4,800.23	4,822.22	4,818.50	4,802.59
	exterior	interior	exterior	exterior	exterior	interior	exterior	interior	interior	interior	interior	interior (Aug-2019)	interior	exterior	exterior	exterior
01/15/21	4,805.35	gone	4,771.75	4,795.31	4,808.34	gone	4,795.06	gone	4,799.61	gone	4,798.85	gone	gone	4,808.64	4,805.39	4,773.12
02/09/21	4,805.12	-	4,769.61	4,795.20	4,807.85	-	4,795.51	-	4,799.47	-	4,798.75	-	-	4,807.13	4,805.14	4,773.20
03/12/21	4,804.93	-	4,767.83	4,795.12	4,807.13	-	4,794.78	-	4,799.28	-	4,799.78	-	-	4,806.42	4,804.91	4,772.09
04/29/21	4,804.21	-	4,766.47	4,794.82	4,806.67	-	4,795.36	-	4,798.15	-	4,796.92	-	-	4,806.14	4,804.41	4,771.90
05/21/21	4,806.05	-	4,766.51	4,795.78	4,807.02	-	4,796.68	-	4,798.83	-	4,797.96	-	-	4,808.51	4,805.90	4,773.31
06/21/21	4,808.21	-	4,767.31	4,795.69	4,807.62	-	4,795.78	-	destroyed	-	4,796.38	-	-	4,808.69	4,807.59	4,775.07
07/16/21	4,808.07	-	4,775.38	4,796.14	4,808.59	-	4,796.95	-	-	-	4,792.90	-	-	4,810.43	4,807.31	4,777.36
08/20/21	4,807.40	-	4,775.50	4,796.32	4,809.22	-	4,796.90	-	-	-	4,793.96	-	-	4,810.11	4,806.59	4,777.78
09/29/21	4,807.84	-	4,778.43	4,795.39	4,809.36	-	4,795.18	-	-	-	4,790.42	-	-	4,809.85	4,806.41	4,777.81
10/26/21	4,806.10	-	4,779.77	4,794.98	4,809.11	-	4,796.09	-	-	-	4,790.57	-	-	4,809.38	4,805.61	4,780.74
11/30/21	4,804.98	-	4,777.32	4,794.54	4,808.46	-	4,794.98	-	-	-	4,790.75	-	-	4,808.01	4,804.68	4,778.08
12/30/21 (avg - see note)	4,804.87	-	4,775.77	4,794.36	4,807.87	-	4,795.03	-	-	-	4,791.99	-	-	4,806.70	4,804.26	4,776.62
01/28/22	4,804.76	gone	4,774.23	4,794.18	4,807.29	gone	4,795.08	gone	gone	gone	4,793.24	gone	gone	4,805.40	4,803.85	4,775.17
02/27/22	4,804.79	-	4,773.43	4,793.77	4,806.72	-	4,795.02	-	-	-	4,792.82	-	-	4,805.55	4,803.36	4,775.39
03/24/22	4,803.25	-	4,773.66	4,793.32	4,806.32	-	4,794.77	-	-	-	4,791.02	-	-	4,804.43	4,802.68	4,775.68
04/26/22	4,802.83	-	4,775.38	4,792.61	4,805.99	-	4,794.09	-	-	-	4,790.86	-	-	4,803.71	4,802.02	4,775.66
05/18/22	4,805.47	-	4,777.54	4,792.62	4,806.38	-	4,795.37	-	-	-	4,792.01	-	-	4,806.17	4,804.37	4,776.70
06/20/22	4,805.51	-	4,775.99	4,792.45	4,809.23	-	4,796.00	-	-	-	4,791.16	-	-	4,807.21	4,804.84	4,777.08
J																
A																
S																
O																
N																
D																

Note: Dec-2021 - Well Reader was out with Covid - so Dec-2021 is average of Nov-2021 & Jan-2022



: Monitoring Well			REV. #	BY	DATE	DESCRIPTION	
			A	-	-		
			B	-	-		
			DRAWN BY: JS			L.G. Everist, Inc. Aggregate Producers 7321 E. 88th Ave, Suite 200 Henderson, CO 80640 (303) 286-2245	L.G. Everist Monitoring Wells
			DATE: 08/03/2021				
			SCALE: Not to scale				
			SIZE: 11x17				L.G. Everist Firestone Mine Weld County, CO