

July 7th, 2022

Colorado Division of Reclamation, Mining and Safety
Bureau of Land Management, Tres Rios Office
San Miguel County Planning Department

RE: Proposed Drill Pad PDH-D Field Adjustment for the Klondike Basin Drill Program

Following a project site visit to Klondike Basin with the drill contractor and construction contractor for the project, we determined that the original location of drill pad PDH-D is not suitable for Phase 1 of this drill program. Based on field reconnaissance and review, and discussion with DRMS and BLM, Tarsis proposes to move the drill pad approximately 300 feet due south. A map is attached identifying original drill pad PDH-D location, and the new proposed drill pad location (PDH-D3) along with associated temporary access route. The drill pad remains solely on BLM unpatented mining claims held by Tarsis and its partners. The temporary access route will originate from a BLM inventory road and will not constitute a new spur from San Miguel County right of ways.

The proposed change does not constitute an increase in anticipated acreage impacted for the project. All other project parameters and operating stipulations and conditions will remain the same.

Please let me know if there are any additional requests or questions.

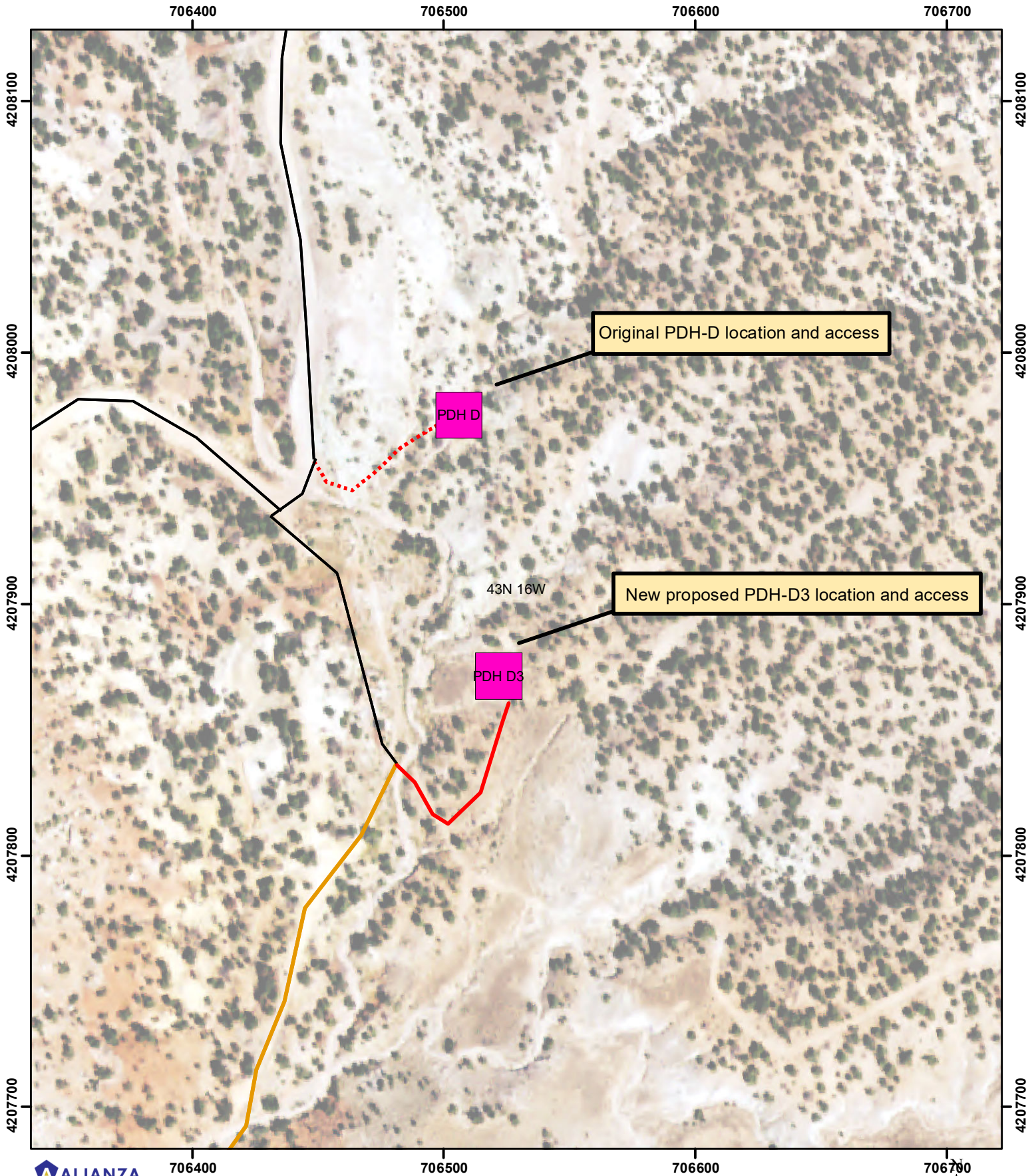
Regards,



Gabriel Sweet, MSc, PG
Vice President Operations
Big Rock Exploration, LLC

Attachments:

1. Map of proposed change in location for PDH-D to PDH-D3.



Alianza Minerals Ltd

Klondike Basin Project
PDH-D Relocation

Prepared by Big Rock Exploration
Date: 7/8/2022

Map Key

- Drill pad
- Laydown



KlonRds_20220708

Status

- Existing - good
- Existing - mod
- Existing - poor
- New XC

Coordinate System: NAD 1983 UTM Zone 12N
Projection: Transverse Mercator
Datum: North American 1983

