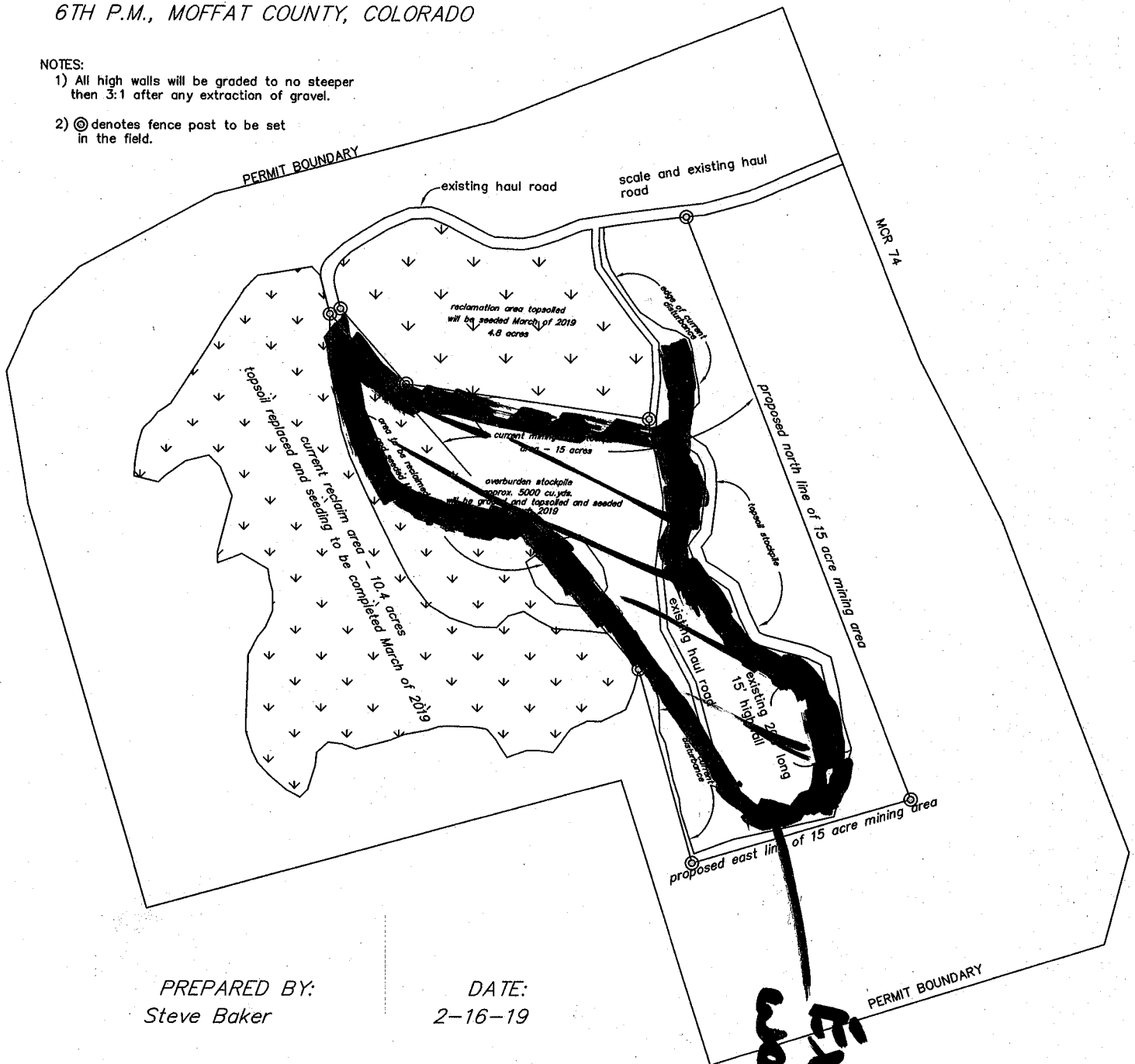


LOCATED IN THE W1/2NW1/4
SECTION 12, T6N, R95W OF THE
6TH P.M., MOFFAT COUNTY, COLORADO

1) All high walls will be graded to no steeper than 3:1 after any extraction of gravel.

2) Ⓢ denotes fence post to be set in the field.



PREPARED BY:
Steve Baker

DATE:
2-16-19

1. **THE**
 2. **THE**
 3. **THE**
 4. **THE**
 5. **THE**
 6. **THE**
 7. **THE**
 8. **THE**
 9. **THE**
 10. **THE**
 11. **THE**
 12. **THE**
 13. **THE**
 14. **THE**
 15. **THE**
 16. **THE**
 17. **THE**
 18. **THE**
 19. **THE**
 20. **THE**
 21. **THE**
 22. **THE**
 23. **THE**
 24. **THE**
 25. **THE**
 26. **THE**
 27. **THE**
 28. **THE**
 29. **THE**
 30. **THE**
 31. **THE**
 32. **THE**
 33. **THE**
 34. **THE**
 35. **THE**
 36. **THE**
 37. **THE**
 38. **THE**
 39. **THE**
 40. **THE**
 41. **THE**
 42. **THE**
 43. **THE**
 44. **THE**
 45. **THE**
 46. **THE**
 47. **THE**
 48. **THE**
 49. **THE**
 50. **THE**
 51. **THE**
 52. **THE**
 53. **THE**
 54. **THE**
 55. **THE**
 56. **THE**
 57. **THE**
 58. **THE**
 59. **THE**
 60. **THE**
 61. **THE**
 62. **THE**
 63. **THE**
 64. **THE**
 65. **THE**
 66. **THE**
 67. **THE**
 68. **THE**
 69. **THE**
 70. **THE**
 71. **THE**
 72. **THE**
 73. **THE**
 74. **THE**
 75. **THE**
 76. **THE**
 77. **THE**
 78. **THE**
 79. **THE**
 80. **THE**
 81. **THE**
 82. **THE**
 83. **THE**
 84. **THE**
 85. **THE**
 86. **THE**
 87. **THE**
 88. **THE**
 89. **THE**
 90. **THE**
 91. **THE**
 92. **THE**
 93. **THE**
 94. **THE**
 95. **THE**
 96. **THE**
 97. **THE**
 98. **THE**
 99. **THE**
 100. **THE**