

To: Tim Cazier
CDRMS
Project/File: 2057288200

From: Paul Kos
Denver
Date: July 12, 2022

Reference: Pikeview Quarry Reclamation Project, Notification of Leica Monitoring Shed Move

Dear Mr. Cazier,

This memo is to inform the Colorado Division of Reclamation, Mining and Safety (CDRMS) that Continental Materials Corp. plans to move the Leica monitoring shed at the Pikeview Quarry Reclamation. The need to move the monitoring shed was anticipated during the reclamation design. Quarry reclamation has progressed to the point where the bench containing the shop building and current Leica monitoring shed will be excavated starting later this month. The Leica monitoring shed move is planned for this Thursday (July 14, 2022) and will involve the following:

- The Leica monitoring shed will be moved to just north of the topsoil stockpile.
- While the Leica monitoring shed is being moved, the monitoring system will be down for approximately 3-5 business days.
- Once the Leica monitoring shed is moved the monitoring system will run on temporary power until final power is installed.
- For the duration that the monitoring system is down, additional spotters and site communication will be employed to visually monitor the slope.
- Attempts will be made to position the Leica monitoring shed in an orientation that can monitor all of the existing prism locations, but some (approximately 1 or 2) prisms may be obscured and may need to be moved.
- The July monitoring report will include details on the Leica monitoring shed move and the readings from the new location. The datum for all prisms will be reset, but the historical database will be retained, should it be needed for reference purposes.
- No further grading is planned at the proposed location, and a second move of the Leica monitoring shed is not planned at this time.

Attached is a map showing the previous location of the Leica monitoring shed and the location to where it will be moved. If there are any questions, please do not hesitate to contact me.

Reference: Pikeview Quarry Reclamation Project, Notification of Leica Monitoring Shed Move

Sincerely,

STANTEC CONSULTING SERVICES INC.

A handwritten signature in black ink, appearing to read "Paul Kos", with a stylized flourish at the end.

Paul Kos P.E.
Senior Geological Engineer
Mobile: 303-570-9163
paul.kos@stantec.com

Attachment: Figure 1. Proposed Leica Shed Location

Reference: Pikeview Quarry Reclamation Project, Notification of Leica Monitoring Shed Move

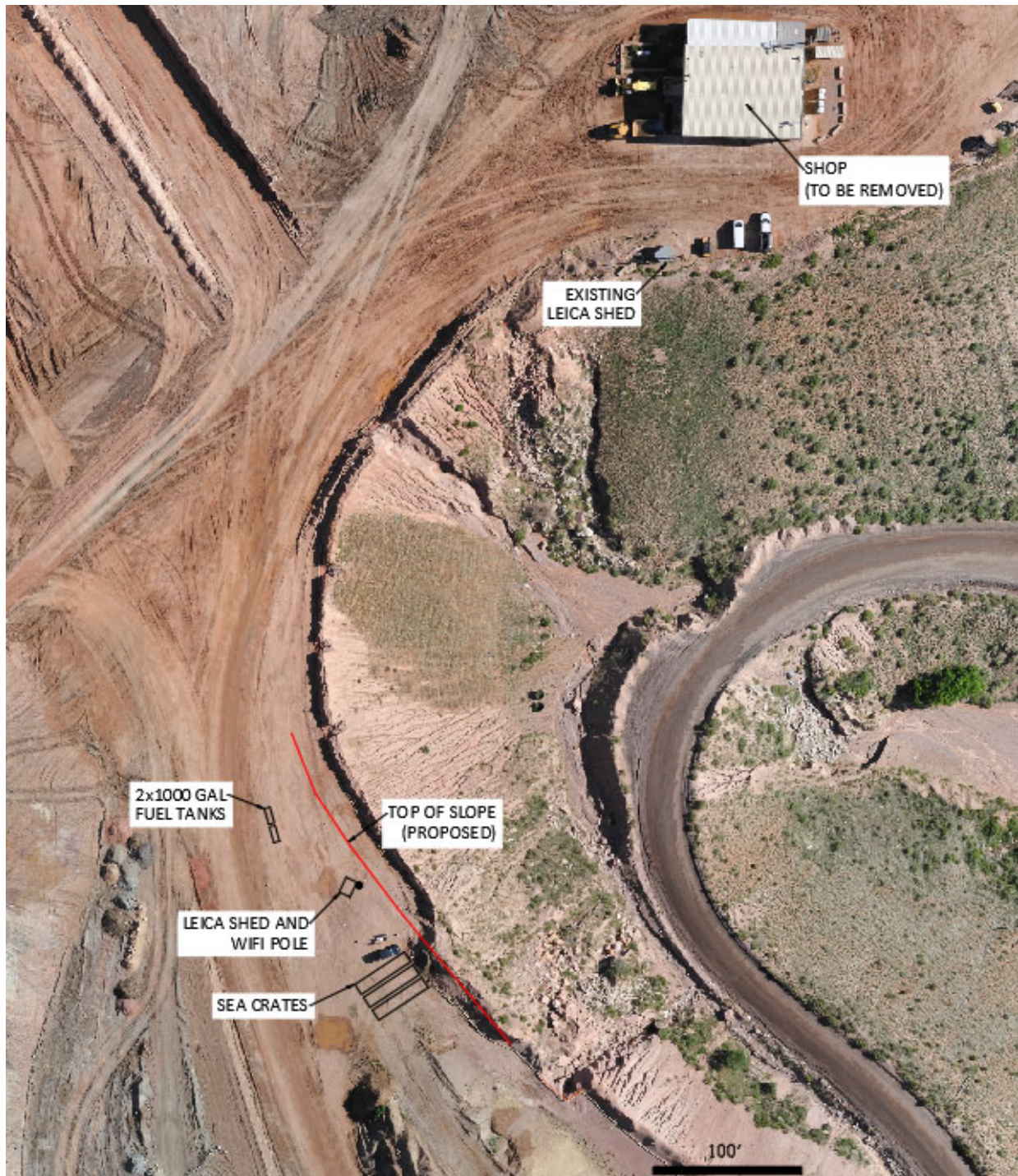


Figure 1. Proposed Leica Shed Location