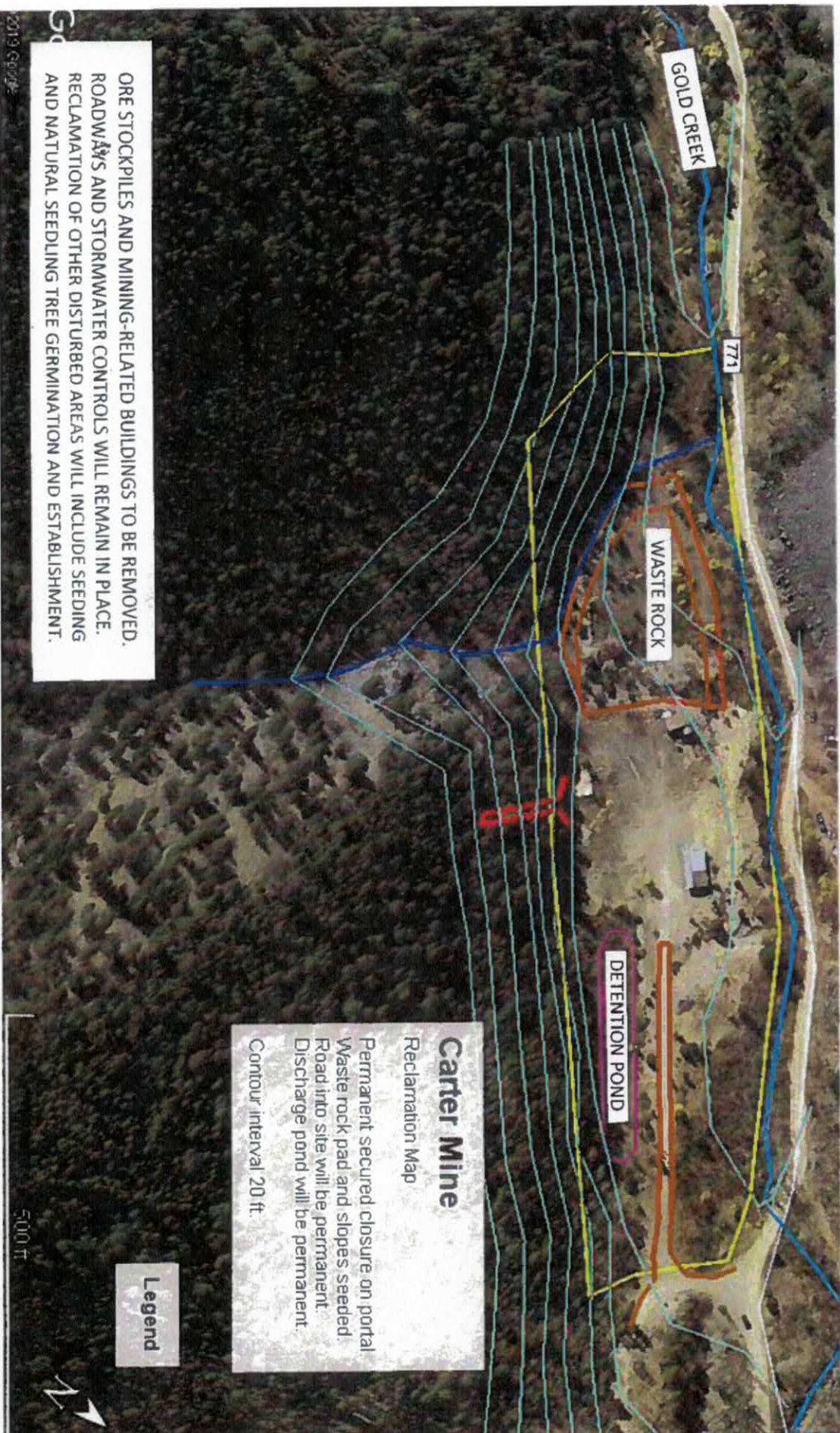


M-2020-014 2021 Map

JACOB MILLIKEN
S-24-2022

S-24-2022



CARTER MINE RECLAMATION MAP

EXHIBIT E.6

Map prepared by Bob Oswald, High Country Consulting Services LLC

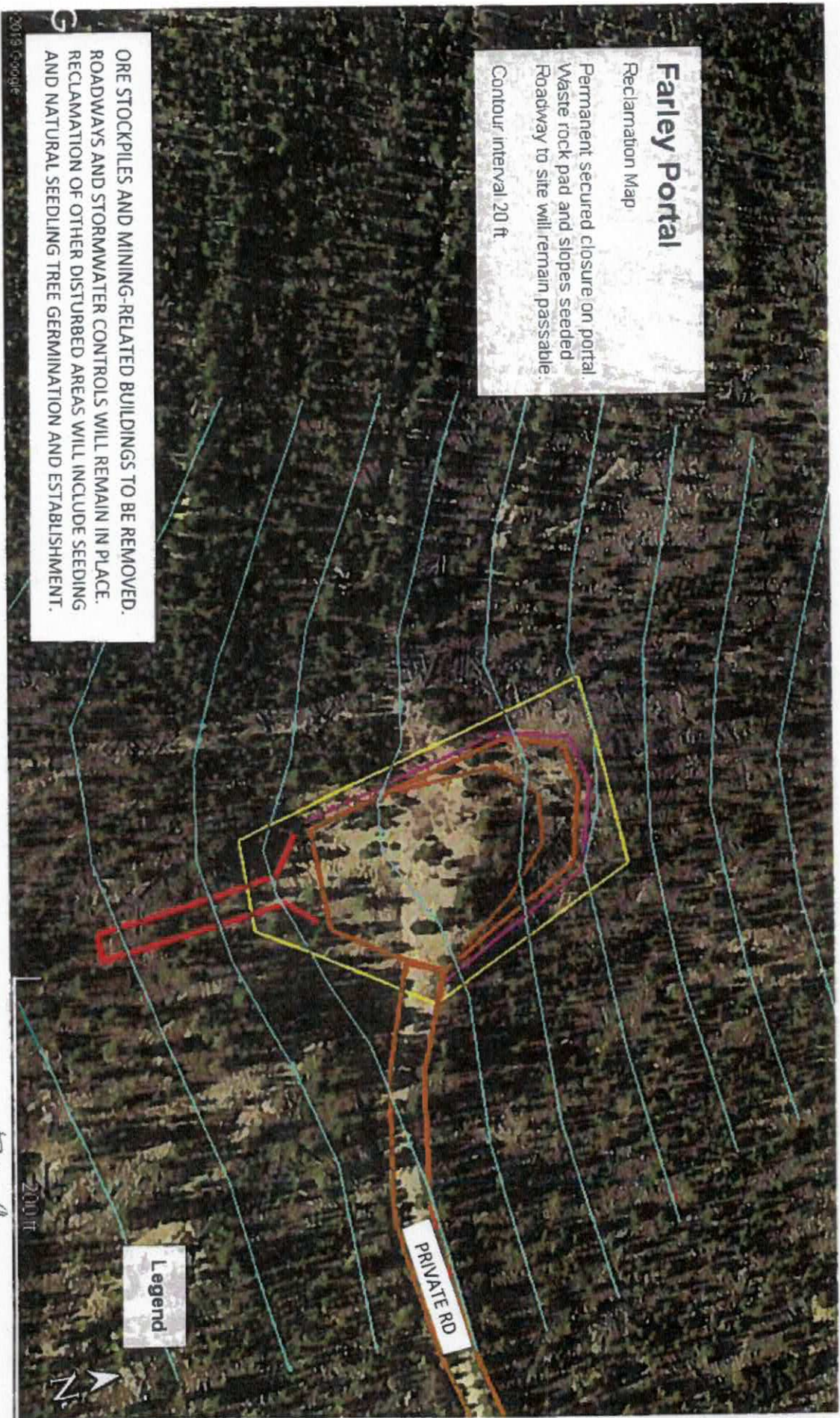
Bob Oswald

on 1/29/20 (date)

M-2020-014 2021 map

5405 MILLERSON
SWS/H

5-24-2022



Farley Portal

Reclamation Map

Permanent secured closure on portal.
Waste rock pad and slopes seeded.
Roadway to site will remain passable.

Contour interval 20 ft.

ORE STOCKPILES AND MINING-RELATED BUILDINGS TO BE REMOVED.
ROADWAYS AND STORMWATER CONTROLS WILL REMAIN IN PLACE.
RECLAMATION OF OTHER DISTURBED AREAS WILL INCLUDE SEEDING
AND NATURAL SEEDLING TREE GERMINATION AND ESTABLISHMENT.

Legend

FARLEY PORTAL RECLAMATION MAP

Map prepared by Bob Oswald, High Country Consulting Services LLC

Bob Oswald

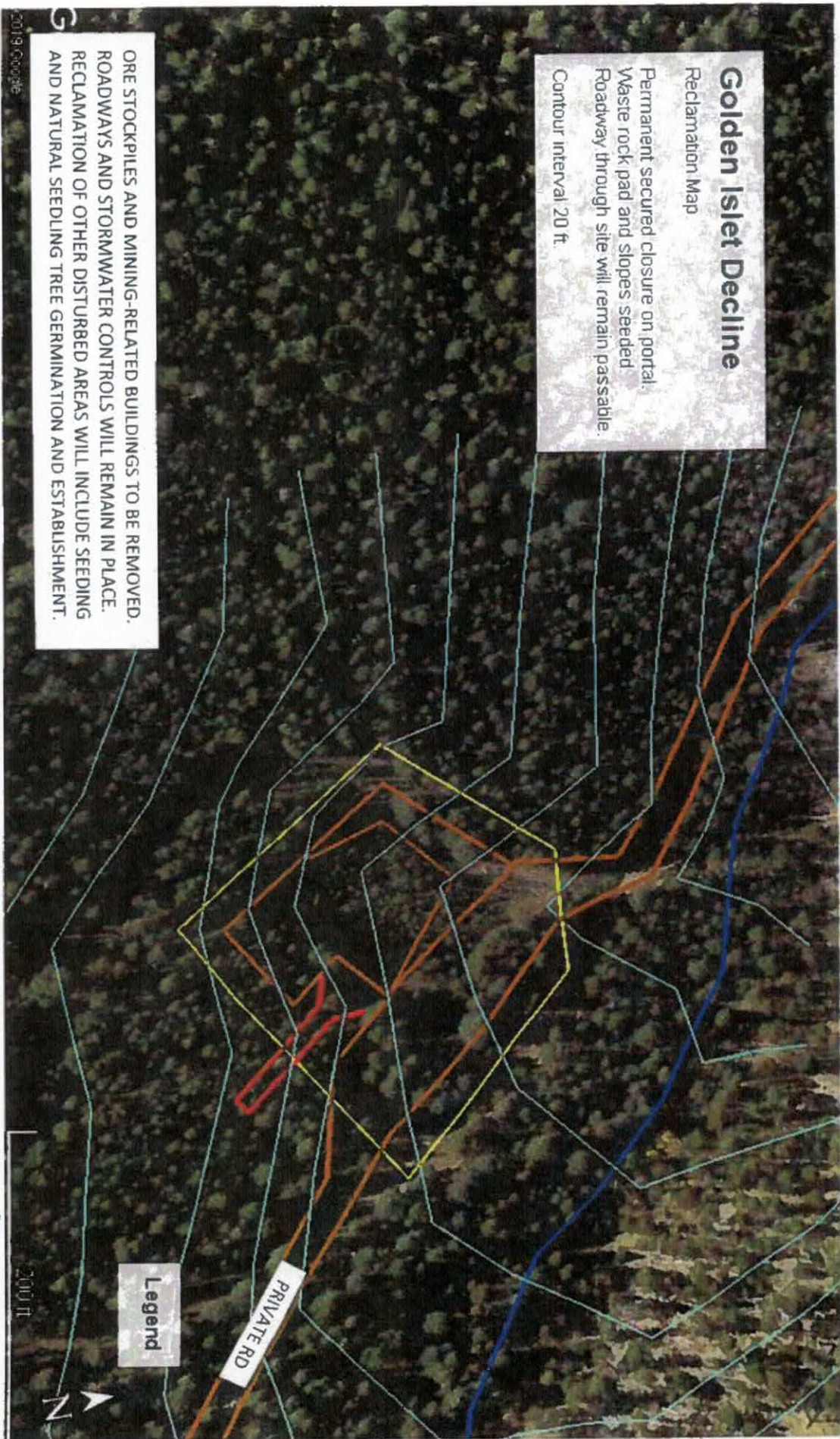
EXHIBIT E.7

on 1/29/20 (date)

M-2020-014 2021 map

SWISH MILLIKINSON
SWISH

5-24-2022



GOLDEN ISLET DECLINE RECLAMATION MAP

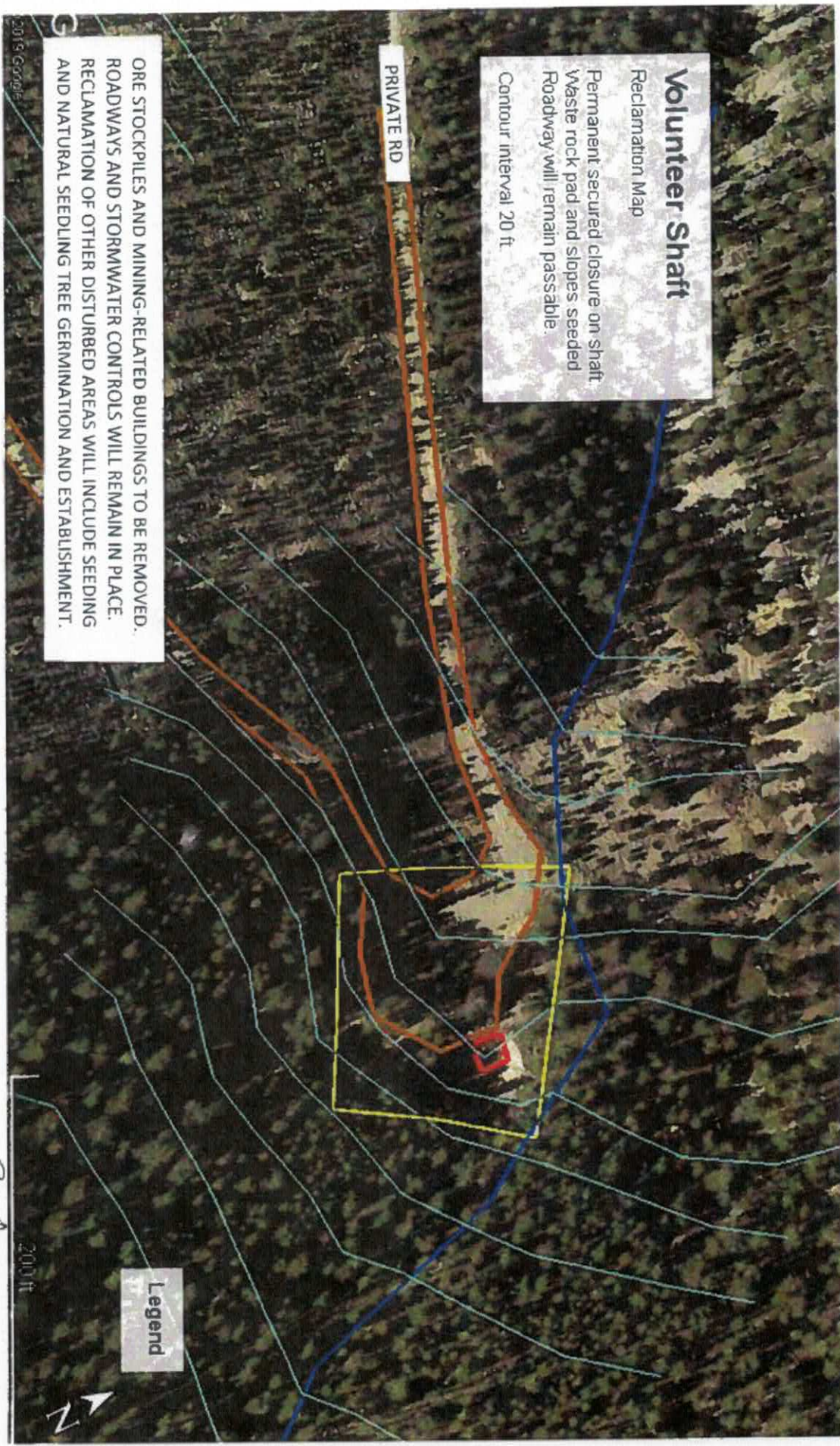
EXHIBIT E.8

Map prepared by Bob Oswald, High Country Consulting Services LLC

Bob Oswald

, on 1/29/20 (date)

M-2020-014 2021 MAP
JACOBS WILKINSON
SHEFF
5-24-2022



VOLUNTEER SHAFT RECLAMATION MAP

EXHIBIT E.9

Map prepared by Bob Oswald, High Country Consulting Services LLC

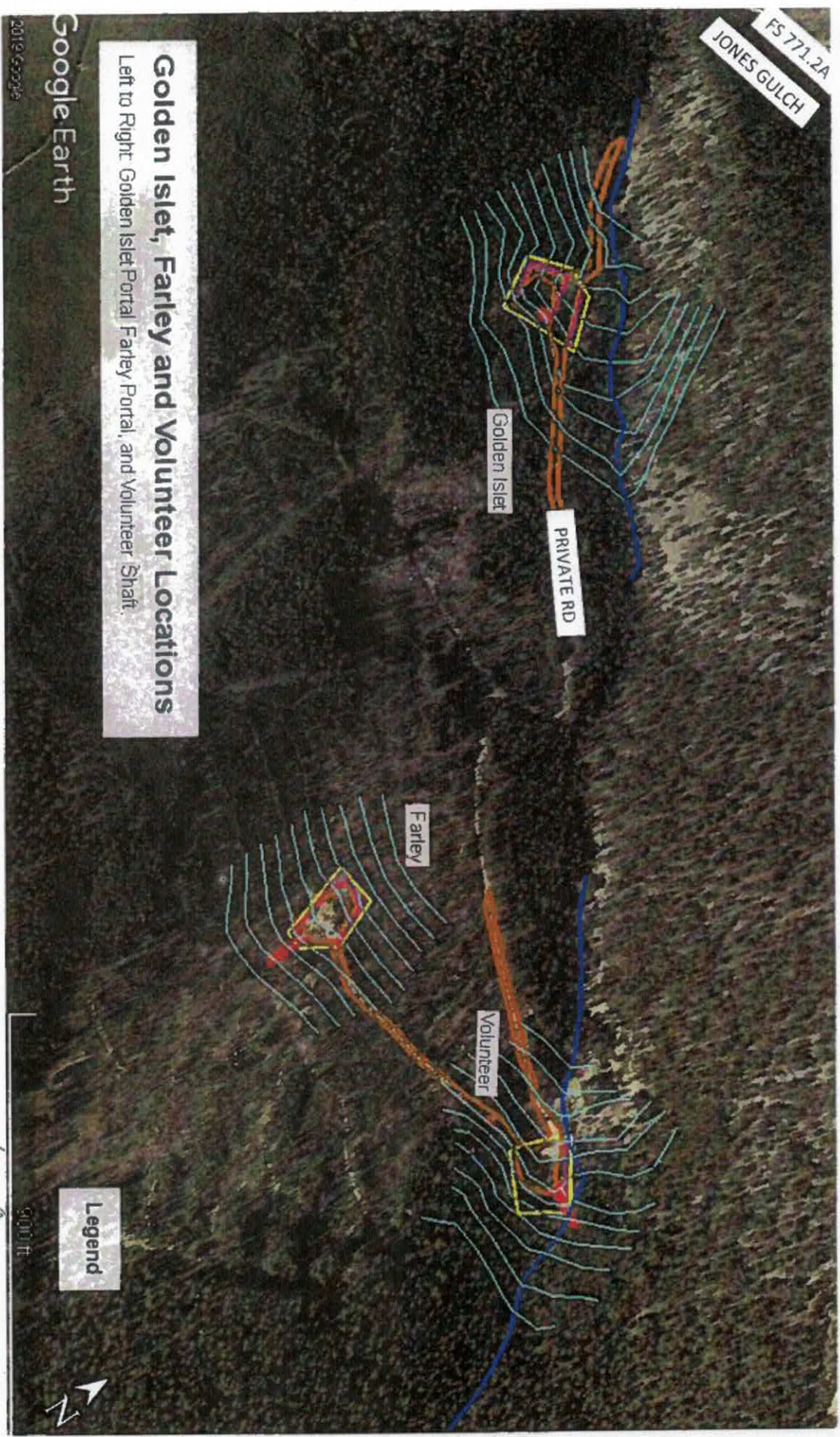
Bob Oswald
on 1/29/20 (date)

M-2020-014

2021 Map

JACOBS WILKINSON
SARAH L.

5-24-2022



Golden Islet, Farley and Volunteer Locations
Left to Right: Golden Islet Portal, Farley Portal, and Volunteer Shaft.

Google Earth

2019-05-20

Map prepared by Bob Oswald, High Country Consulting Services LLC

Bob Oswald

EXHIBIT E.10

on 1/29/20 (date)