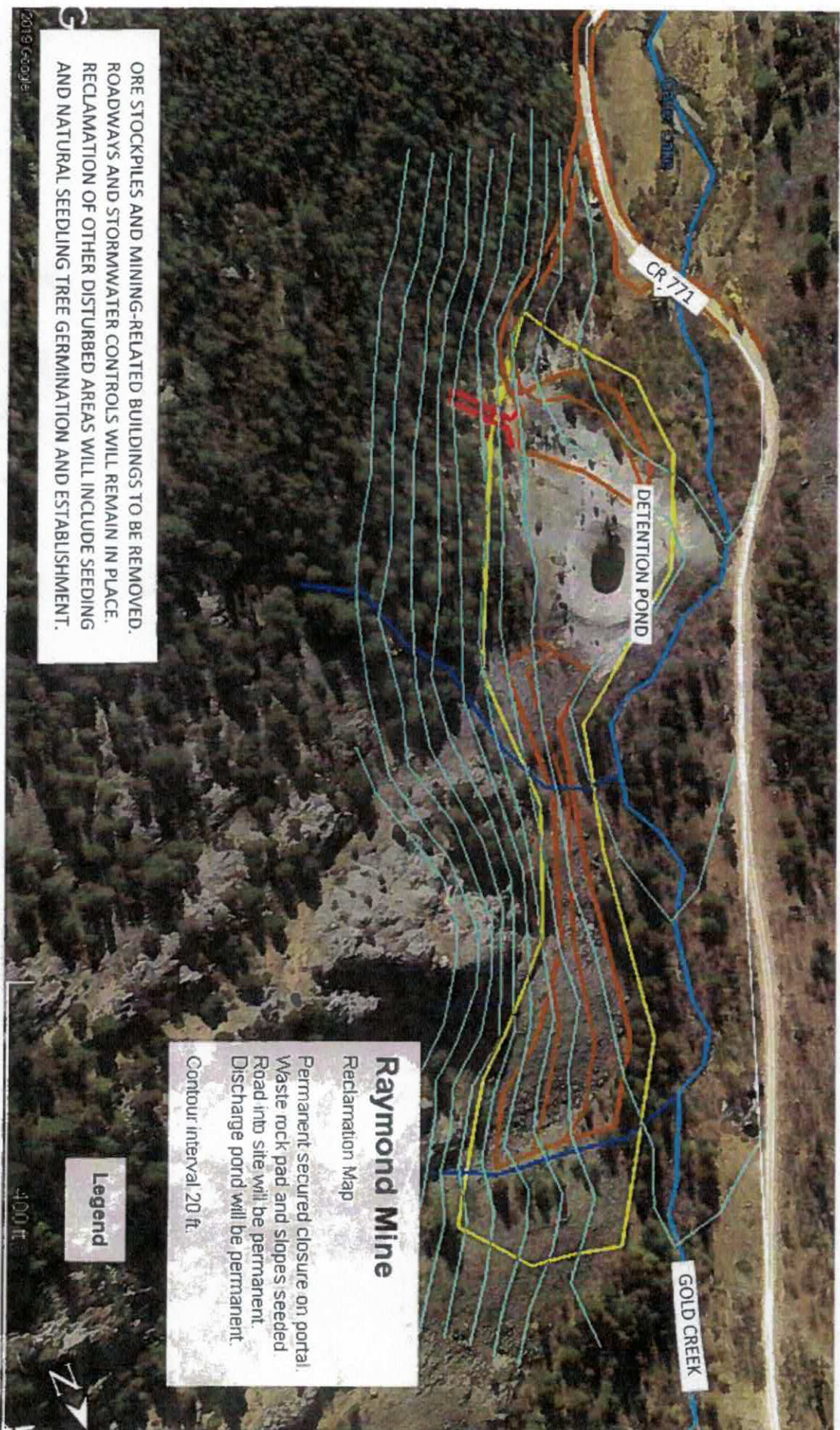


M-2020-013 2021 MAP

JACK WILKINSON
5MS HEL

5-24-2022



RAYMOND MINE RECLAMATION MAP

EXHIBIT E.6

Map prepared by Bob Oswald, High Country Consulting Services LLC

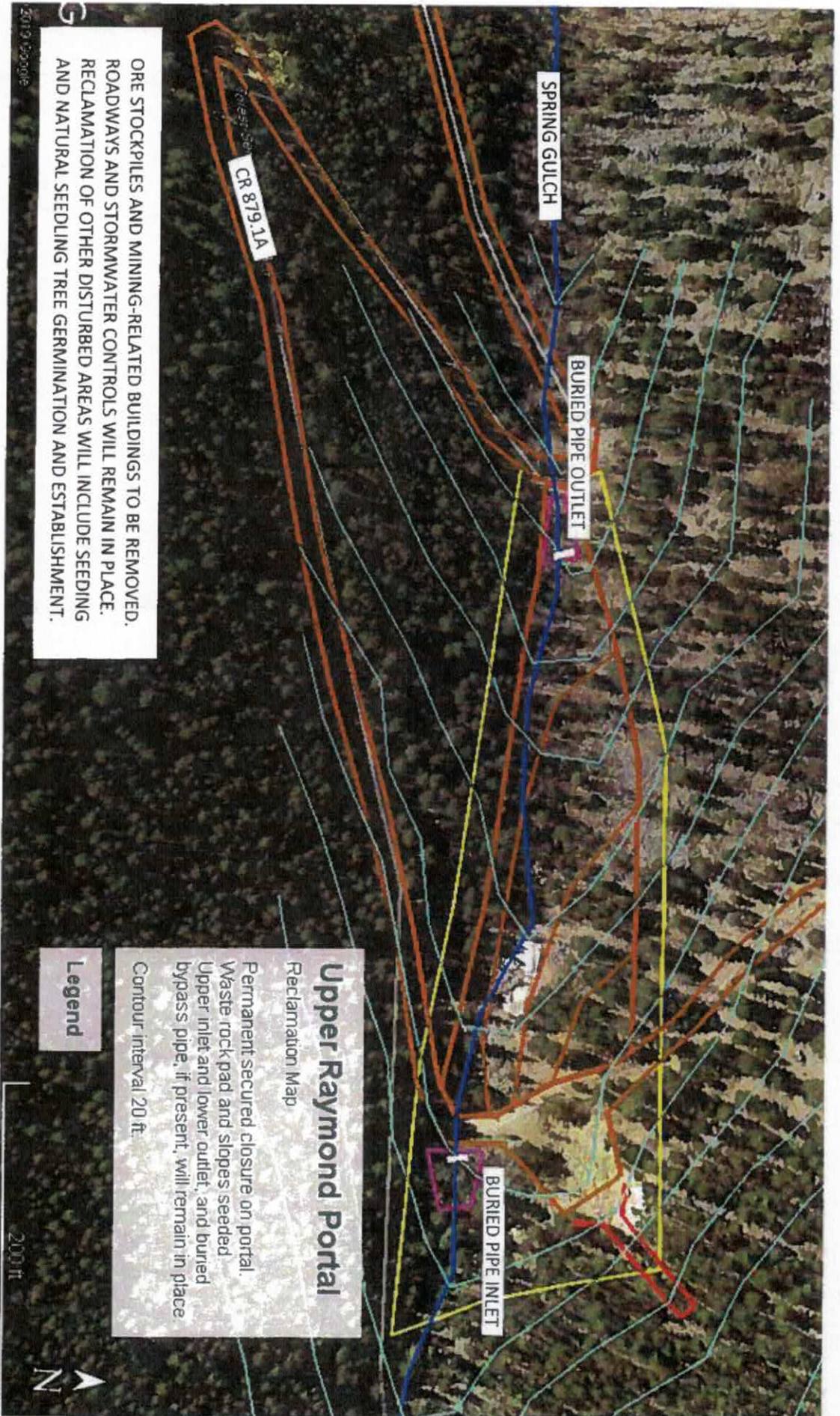
Bob Oswald

on 1/29/20 (date)

M-2020-013 2021 Map

Jacob Wilkinson
SWS 411

5-24-2022



UPPER RAYMOND PORTAL RECLAMATION MAP
EXHIBIT E.7

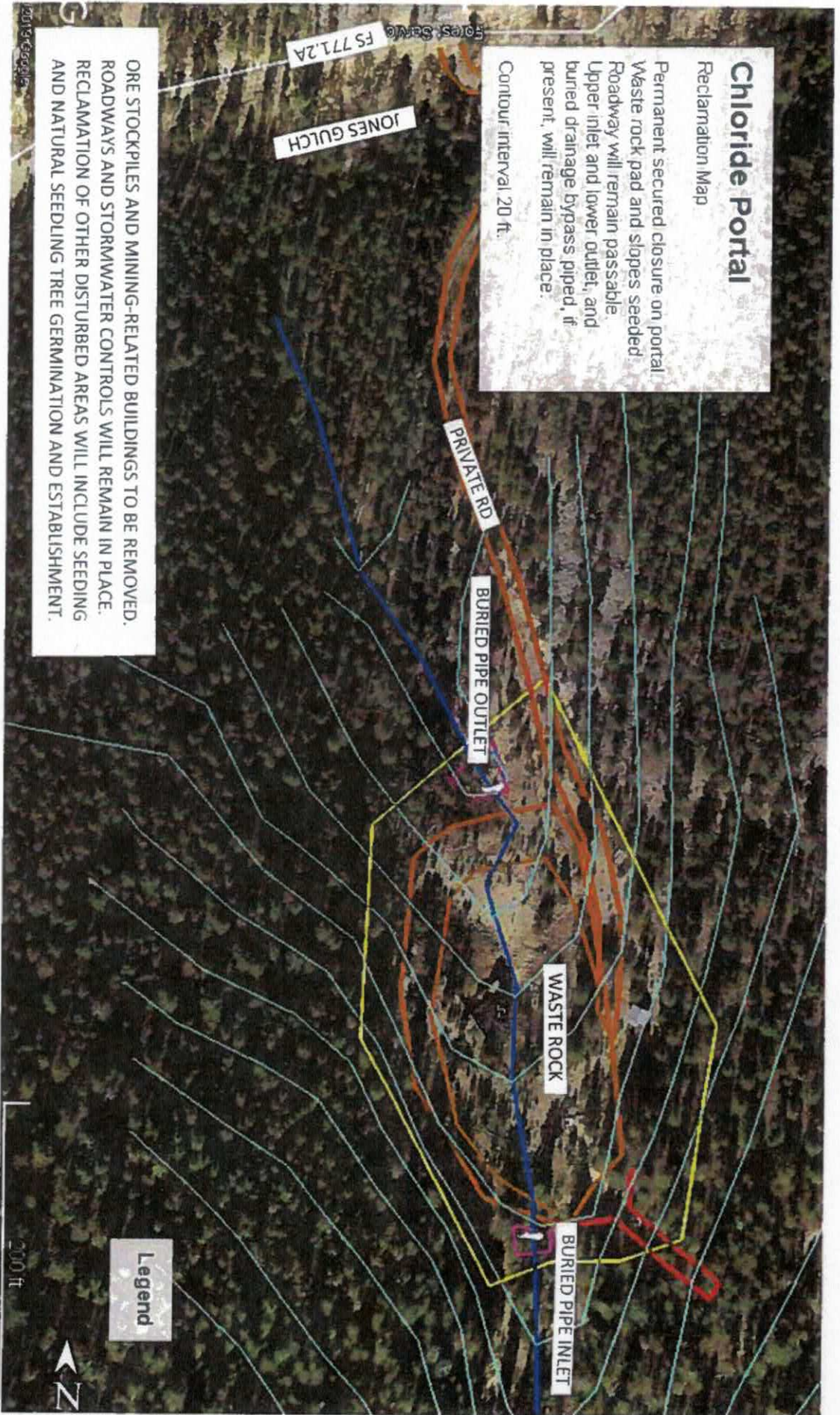
Map prepared by Bob Oswald, High Country Consulting Services LLC

Bob Oswald
on 1/29/20 (date)

N-2020-013 2021 MAP

JACOB WILKINSON
SWS/LLC

5-24-2022



CHLORIDE PORTAL RECLAMATION MAP

EXHIBIT E.8

Map prepared by Bob Oswald, High Country Consulting Services LLC

Bob Oswald

on 1/29/20 (date)

M-2020-013 2021 map

JACOB WILKINSON
SUSAN

5-24-2022



Grand Prize Raise

Reclamation Map

Permanent secured closure on shaft.
Waste rock pad and slopes seeded.
Roadway will remain passable.

Contour interval 20 ft.

ORE STOCKPILES AND MINING-RELATED BUILDINGS TO BE REMOVED.
ROADWAYS AND STORMWATER CONTROLS WILL REMAIN IN PLACE.
RECLAMATION OF OTHER DISTURBED AREAS WILL INCLUDE SEEDING
AND NATURAL SEEDLING TREE GERMINATION AND ESTABLISHMENT.

Legend

GRAND PRIZE RAISE RECLAMATION MAP

EXHIBIT E.9

Map prepared by Bob Oswald, High Country Consulting Services LLC

Bob Oswald

on 1/29/20 (date)

M-2020-013 2021 map

Stearns withinson
SMB All

8-24-2022

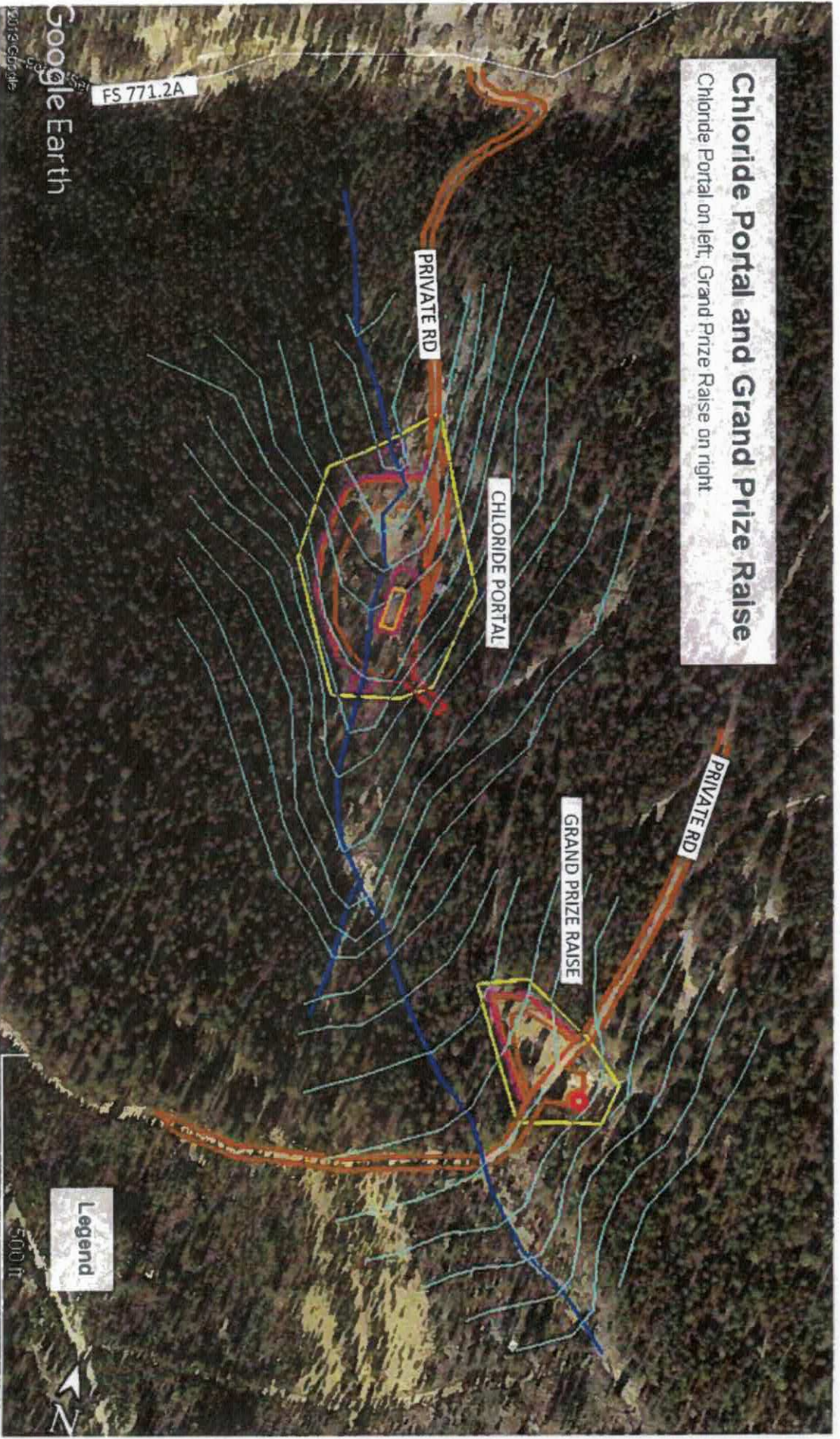


EXHIBIT E.10

Map prepared by Bob Oswald, High Country Consulting Services LLC

Bob Oswald

on 1/29/20 (date)