

LEGEND

BOUNDARIES

- State or national boundary
- County or equivalent boundary
- Mining claim or property boundary
- Unimproved boundary

BUILDINGS AND RELATED STRUCTURES

- Building
- Well (other than water)
- Fence

ROADS AND RELATED FEATURES

- Highway
- Light duty road, paved
- Light duty road, gravel
- Unimproved road
- Trail
- Road stock, berm, or barrier
- Gate
- Cattle crossing guard
- Barbed wire

RIVERS, LAKES, SHORELINES, AND CANALS

- Perennial stream/creek
- Perennial river
- Intermittent stream/creek
- Intermittent river
- Dam
- Perennial lake/pond
- Intermittent lake/pond
- Dry lake/pond
- Grassed riparian, frame, or conduit
- Barbed wire, frame, or conduit
- Waterway
- Wetland
- Drainage basin
- Flow line

VEGETATION

- Barrenland
- Shrubland
- Wetland
- Trees

TRANSMISSION LINES AND PIPELINES

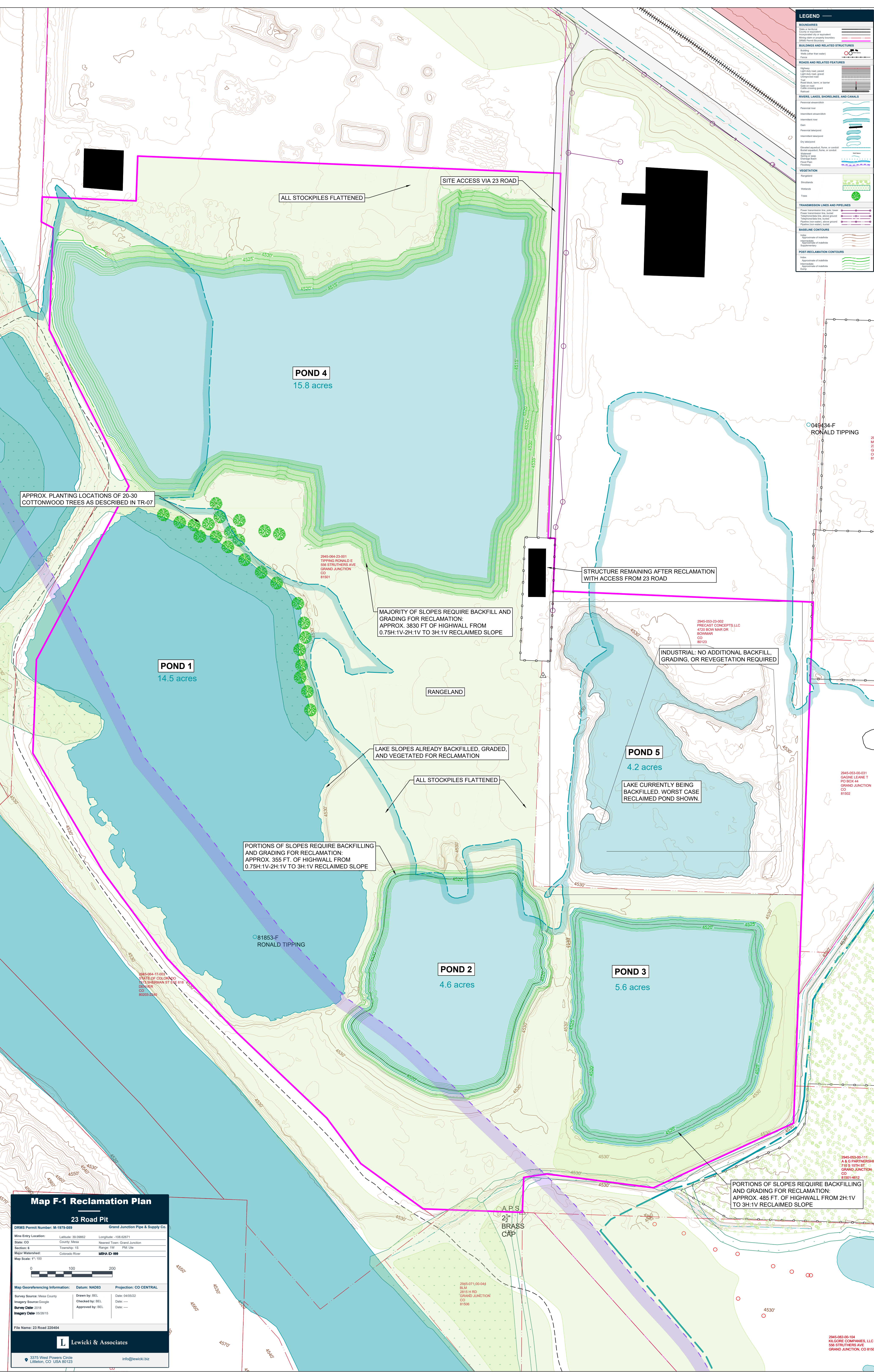
- Power transmission line, pole, tower
- Power transmission line, tower
- Telephone line, above ground
- Telephone line, below ground
- Pipeline (oil, gas, water, steam, etc.)
- Pipeline (oil, gas, water, steam, etc.)
- Pipeline (oil, gas, water, steam, etc.)

BASELINE CONTOURS

- Approximate of elevation
- Approximate of elevation
- Approximate of elevation

POST-RECLAMATION CONTOURS

- Approximate of elevation
- Approximate of elevation
- Approximate of elevation



Map F-1 Reclamation Plan

23 Road Pit

DRMS Permit Number: M-1979-089 Grand Junction Pipe & Supply Co.

Mine Entry Location: Latitude: 39.09862 Longitude: -108.62671

State: CO County: Mesa Nearest Town: Grand Junction

Section: 6 Township: 1S Range: 1W PM: Ute

Major Watershed: Colorado River MESA ID: 000

Map Scale: 1"=100

Map Georeferencing Information: Datum: NAD83 Projection: CO CENTRAL

Survey Source: Mesa County Drawn by: BEL Date: 04/05/22

Imagery Source: Google Checked by: BEL Date: ---

Survey Date: 2018 Approved by: BEL Date: ---

Integrity Date: 05/28/15

File Name: 23 Road 220404

Lewicki & Associates

3275 West Powers Circle
Littleton, CO USA 80123
info@lewicki.biz