

Montezuma County Map Viewer

Find Address, Owner, PID

+

-

Home

Refresh

Full Screen

Measurement

Measurement Result

1.65 Acres

Clear

mired in 2021

Press CTRL to enable snapping

Layers

Search

Measure

Tools

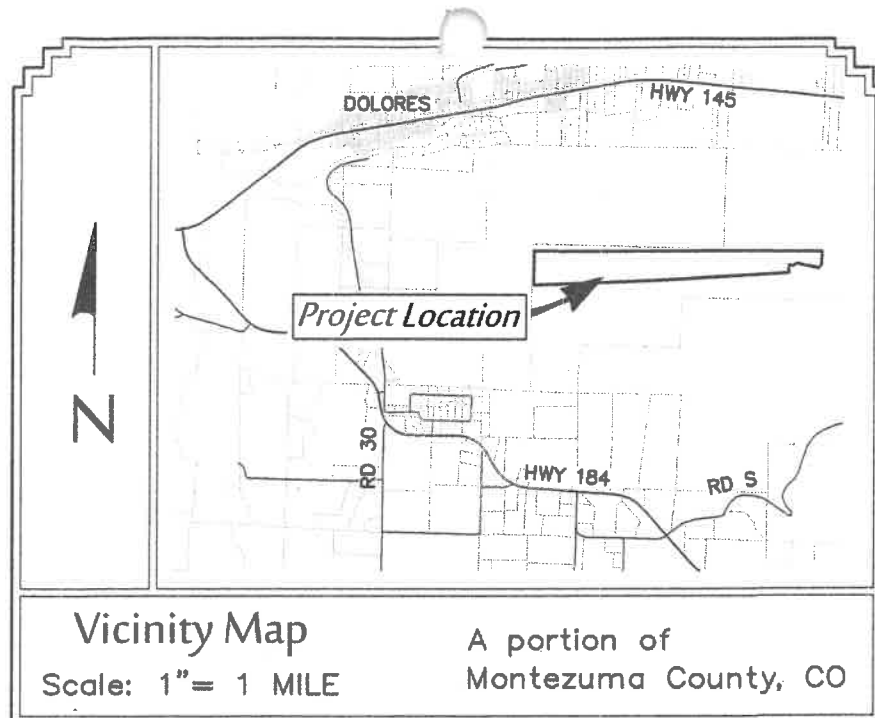
Print

0 150 300ft

37.46210 -108.47021 Degrees

https://montezumacounty.maps.arcgis.com/apps/webappviewer/index.html?id=c150a0ba951a4df68a31ffacde80045e

1/1

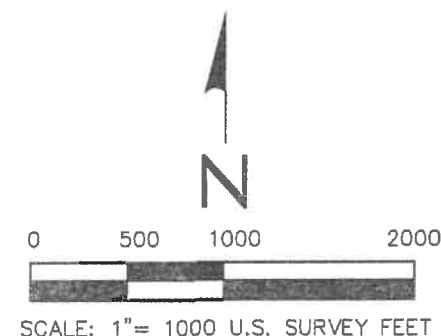


MONTEZUMA COUNTY GRAVEL PIT LEASE AREA HAYCAMP MESA

LOCATED IN SECTION 13, 14 & 15, T37N, R15W, NMPM
MONTEZUMA COUNTY, COLORADO

LEGEND

- ◆ FOUND 3" ALUMINUM CAP MOUNTED ON REBAR, STAMPED LS 19612
- ◆ FOUND 3" BLM CAP, 1984
- FOUND 1" PLASTIC CAP ON REBAR, MARKED LS 19612
- + POSITION FOR CORNER - MONUMENT NOT FOUND OR SET



DESCRIPTION

A tract of land located in Sections 13, 14 and 15, Township 37 North, Range 15 West, New Mexico Principal Meridian, Montezuma County, Colorado, being more particularly described as follows:

Beginning at a point in the SW/4 of Section 13, T37N, R15W, NMPM, from which the 1/4 Corner common to Sections 13 and 14, T37N, R15W, NMPM, bears N86°31'20"W a distance of 1321.9 feet;

Thence S00°12'55"E a distance of 366.00 feet;

Thence S39°03'46"W a distance of 120.21 feet;

Thence N79°59'36"W a distance of 626.78 feet;

Thence S59°07'35"W a distance of 121.15 feet;

Thence N82°50'09"W a distance of 116.31 feet;

Thence S04°05'00"W a distance of 103.00 feet;

Thence S08°38'00"E a distance of 78.00 feet;

Thence South a distance of 30.85 feet;

Thence S85°45'54"W a distance of 3568.27 feet;

Thence S87°05'23"W a distance of 3437.91 feet to a fence line;

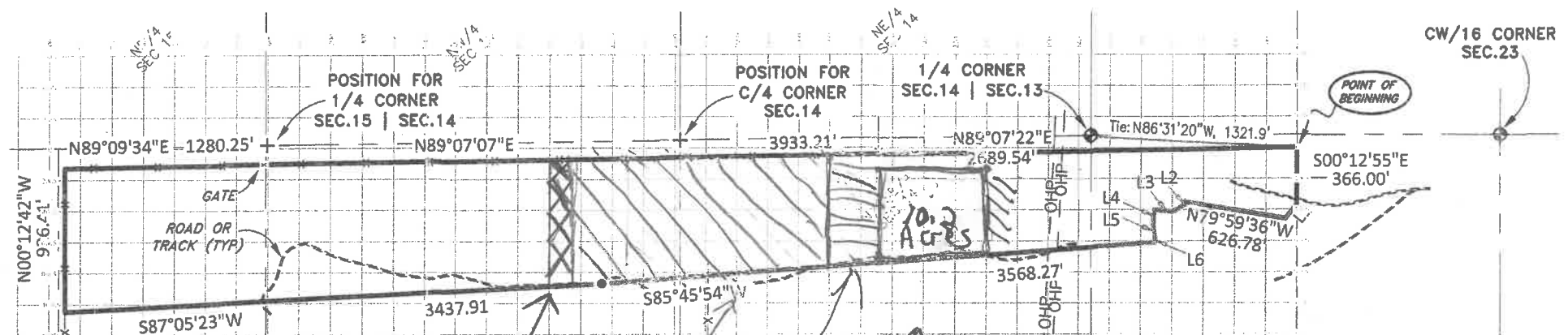
Thence N00°12'42"W a distance of 926.41 feet along a fence line, more or less, to a fence corner;

Thence N89°09'34"E a distance of 1280.24 feet along a fence line, more or less;

Thence N89°07'07"E a distance of 3933.21 feet along a fence line, more or less;

Thence N89°07'22"E a distance of 2679.54 feet to the point of beginning, and containing 133.56 acres more or less.

Bearings are referenced by a line from the North 1/4 Section 24, a 3" monument LS 19612 to the SE Corner Section 13, a BLM monument. This line bears S89°57'05"E a distance of 2646.6 feet. Bearings are based on static GPS observations.



200' → | ← 200' Grid
2021 1.65 Acres
2019 mined 12 Acres
4 Acres mined 2018
additional 10.2 Acres New mined 2018 season
stock pile Area

LINE TABLE		
L1	S39°03'46"W	120.21'
L2	S59°07'35"W	121.15'
L3	N82°50'10"W	116.31'
L4	S04°05'00"W	103.00'
L5	S08°38'00"E	78.00'
L6	SOUTH	30.85'

SURVEYOR'S CERTIFICATION

KNOW ALL MEN BY THESE PRESENTS:

That I, Ernest E. Maness, do hereby certify that I prepared this plat from an actual and accurate survey of the land and that the same is true and correct to the best of my knowledge and belief. This plat is in accordance with applicable standards of practice.

This statement is not a guaranty or warranty, either expressed or implied.

Ernest E. Maness
10/16/2017
ERNEST E. MANESS COLORADO REG. 19612
PROFESSIONAL LAND SURVEYOR

MANESS & Associates, Inc.
REGISTERED LAND SURVEYORS

**MONTEZUMA COUNTY GRAVEL PIT LEASE AREA
HAYCAMP MESA**

LOCATED IN SECTION 13, 14 & 15, T37N, R15W, NMPM
MONTEZUMA COUNTY, COLORADO

Directed by Randy Smith
& Rob Englehart

File: 2017-09-R03

su: montezumacountyroaddep/haycamp
plt: haycampplt.dwg

OCT 12, 2017

28 S. Washington -- P.O. Box 1163 -- Cortez, CO. 81321
Phone: 970/565-8845 • manessernest@frontier.net