



United States Department of the Interior

BUREAU OF LAND MANAGEMENT

Royal Gorge Field Office
3028 East Main Street
Cañon City, Colorado 81212



3809 LLCOF02000
COC-051792

Attn: Gerald V. Jergensen II
Colorado Milling Company LLC
12915 McCune Road
Black Forest, CO 80106

:
:
:

Surface Management

RESPONSE TO WATER PUMP TEST REQUEST

Mr. Jergensen,

On April 8, 2022, Colorado Milling Company LLC contacted this office requesting to conduct a water pump test at the Gold Hill Mill to determine flow rates, pump capabilities, static water levels and total volumes. As the Wynona Shaft is located on BLM managed lands (Enclosure 1), this request was reviewed to determine if the proposed activities are greater than casual use.

The water pump test would include the following:

1. Measure and record static water levels in the Times Mine well and the Wynona Mine shaft.
2. Start a pump currently installed in the Wynona Mine shaft.
3. Establish a steady water flow rate from this pump.
4. Measure and record water flow rates, water levels and volumes in both the Times Mine well and the Wynona Mine shaft.
5. Water pumped from the Times-Wynona Mine will be stored in tanks within the current mill facility. No water will be pumped to the tailings facility or discharged.
6. Upon completion, all water pumped out of the Times-Wynona Mine will be returned via the same route.

BLM has reviewed your request and determined that the proposed activities will result in negligible disturbance and is therefore considered casual use and does not require BLM involvement (43 CFR 3809). In addition, it appears that this water pump test will assist with State permitting requirements in preparation for finalizing a Plan of Operations, that will assist Colorado Milling Company LLC in coming into compliance with BLM regulations.

As a reminder, on April 03, 2013 the site was put under a temporary Suspension Order until BLM approves a complete Plan of Operations for the Gold Hill Mill and Mine project areas. No activities greater than casual use are permitted until BLM authorizes the release of the Suspension Order. Conducting activities greater than casual use before an approved Plan of Operations is determined, as required by 43 CFR 3809.412, is a prohibited act under 43 CFR 3809.605(b). Failure to comply with the Suspension Order will result in further enforcement actions under 43 CFR 3809.601.

If you have any questions, please contact Stephanie Carter at 719-269-8551.

Sincerely,

KEITH BERGER Digitally signed by KEITH BERGER
Date: 2022.05.02 09:25:35 -06'00'

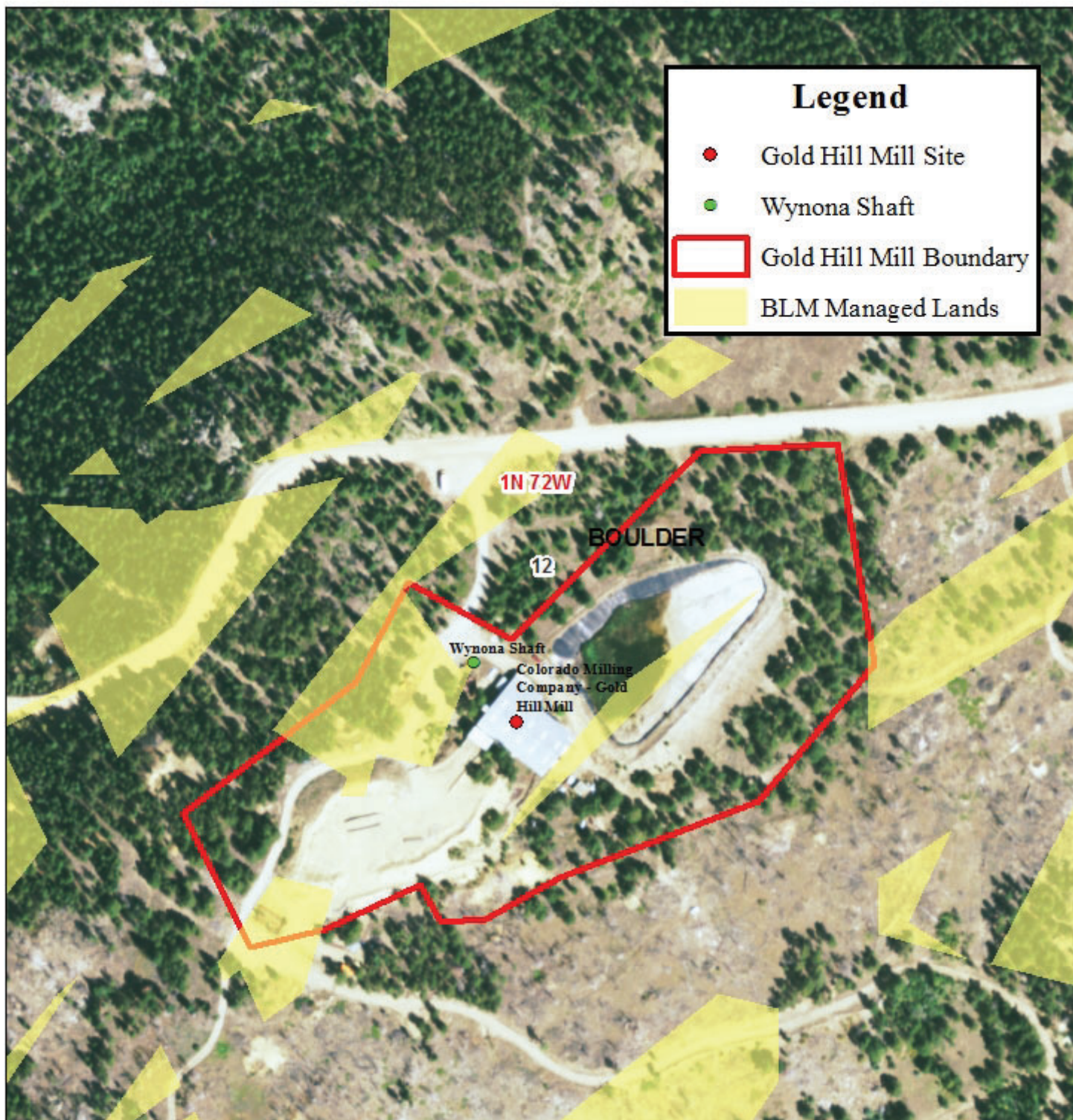
Keith E. Berger
Field Manager
Royal Gorge Field Office

Enclosure:

1 – Location Map of Wynona Shaft

Cc:

Patrick Lennberg, DRMS
Ben Langenfeld, P.E., Lewicki & Associates

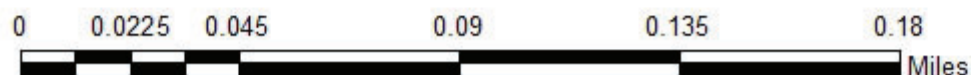


Colorado Milling Company LLC Gold Hill Mill - Water Pump Test Wynona Shaft Location

6th PM, T01N., R.72W., Sec 12



NOTE TO MAP USERS
No warrantee is made by the Bureau of Land Management as to the accuracy, reliability, or completeness of the data layers shown on this map. The official land records of the data providers should be checked or current status on any specific tract of land.



STATE OF
COLORADO

Lennberg - DNR, Patrick <patrick.lennberg@state.co.us>

RE: [EXTERNAL] RE: Gold Hill Mill Pump Test

1 message

Carter, Stephanie S <sscarter@blm.gov>

Mon, May 2, 2022 at 10:06 AM

To: "jerryjergensen@aol.com" <jerryjergensen@aol.com>

Cc: "Pike, Amber M" <apike@blm.gov>, "Lennberg - DNR, Patrick" <patrick.lennberg@state.co.us>, Ben Langenfeld <benl@lewicki.biz>

Good Morning,

Please see attached for the letter specific to the pumping test needed. Let me know if you have any questions, thanks!

Best Regards,

Mrs. Stephanie Carter, LPG

*Geologist, Program Lead Locatable & Mineral Materials*BLM CO, Royal Gorge Field Office | Dep't of Interior Region 7 | 3028 E. Main St., Canon City, CO 81212
| 719.269.8551

From: Ben Langenfeld <benl@lewicki.biz>**Sent:** Monday, April 25, 2022 3:09 PM**To:** Pike, Amber M <apike@blm.gov>**Cc:** Carter, Stephanie S <sscarter@blm.gov>; jerryjergensen@aol.com**Subject:** [EXTERNAL] RE: Gold Hill Mill Pump Test

This email has been received from outside of DOI - Use caution before clicking on links, opening attachments, or responding.

Amber

Here are lat/longs of the Wynona Shaft:

40.06547, -105.40336

Ben Langenfeld, P.E.

Lewicki & Associates

benl@lewicki.biz

Office: (720) 842-5321

Cell: (303) 960-5613

From: Ben Langenfeld
Sent: Tuesday, April 12, 2022 1:09 PM
To: Pike, Amber M <apike@blm.gov>
Cc: Carter, Stephanie S <sscarter@blm.gov>
Subject: RE: Gold Hill Mill Pump Test

Amber

I am following up on this email from last week to make sure you got it. Any thoughts?

Ben Langenfeld, P.E.

Lewicki & Associates

benl@lewicki.biz

Office: (720) 842-5321

Cell: (303) 960-5613

From: Ben Langenfeld
Sent: Friday, April 8, 2022 9:31 AM
To: Pike, Amber M <apike@blm.gov>
Subject: Gold Hill Mill Pump Test

Amber

We would like to conduct a small internal pump test at the Gold Hill Mill using the existing infrastructure. As there is a cessation order in place, CDRMS requires that we have authorization from BLM to perform this pump test.

The test would consist of the following:

1. Measure and record static water levels in the Times Mine well and the Wynona Mine shaft.
2. Start a pump currently installed in the Wynona Mine shaft.
3. Establish a steady water flow rate from this pump.
4. Measure and record water flow rates water levels in both the Times Mine well and the Wynona Mine shaft and document these flow rates, totalized volumes, and water levels.
5. Water pumped from the Times-Wynona Mine will all be stored with tanks within the current mill facility. No water will be pumped to the tailings facility or discharged.
6. Upon completion, all water pumped out of the Times-Wynona Mine will be returned via the same route.

Please let me know as soon as you can what additional information you would like to know to authorize this test. Attached is a KMZ showing the location of the Wynona Shaft and the Mill Tanks we would use in this test.

Ben Langenfeld, P.E.

Lewicki & Associates

benl@lewicki.biz

Office: (720) 842-5321

Cell: (303) 960-5613



042922 CO Milling Goldhill Mill Pump Test Letter_ssc_signable-kb.pdf
704K