

NOTES:

DESIGN CONTOURS AND CROSS SECTIONS FOR REFUSE AREA A ARE FINAL RECLAIMED CONTOURS AND CROSS SECTIONS.

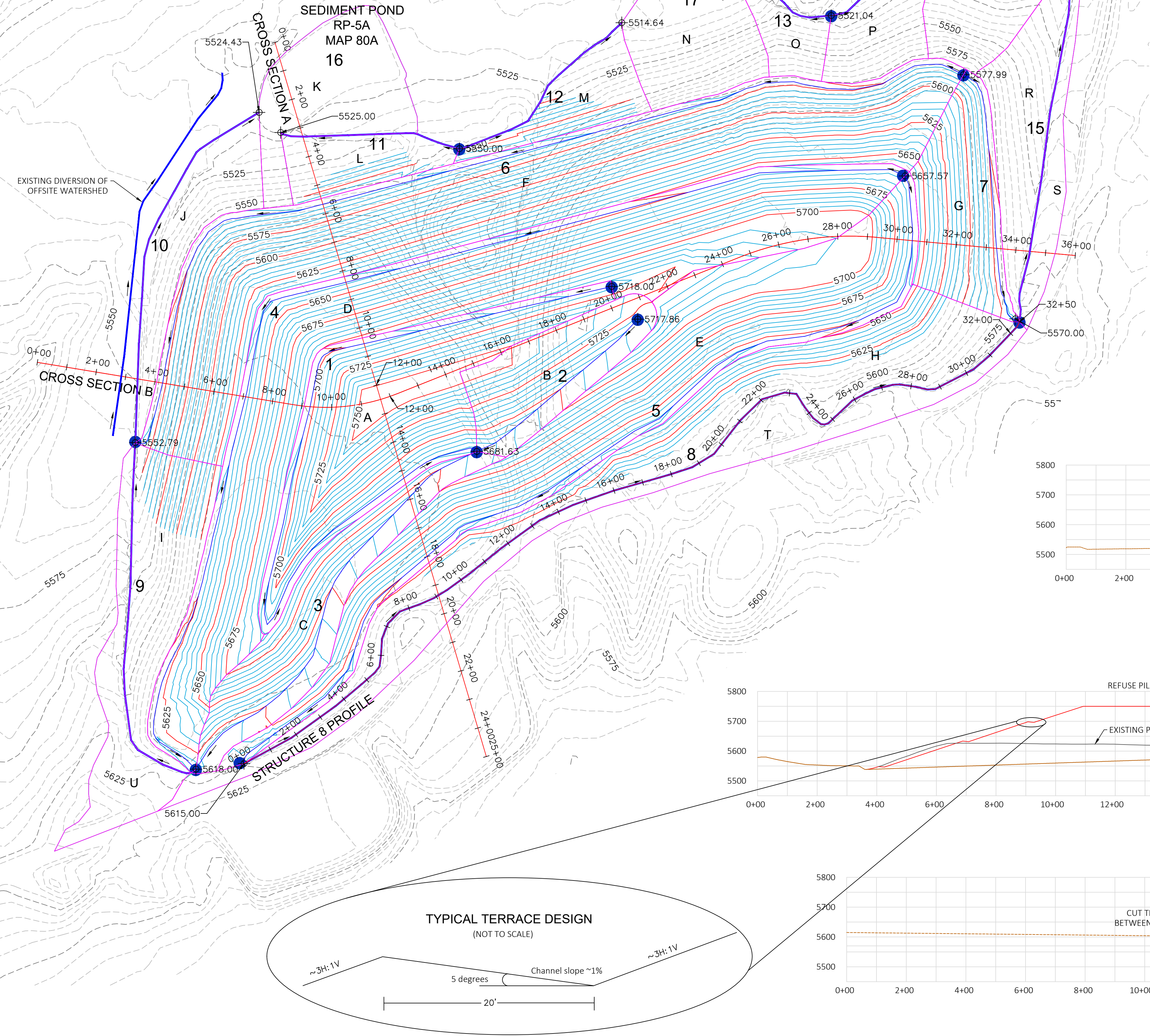
FINAL CONTAINMENT DITCHES (PERIMETER DITCHES) TO BE COMPLETED TO DESIGN SPECIFICATIONS PRIOR TO RECLAMATION. THEY WILL BE CONSTRUCTED IN PHASES ADJACENT TO AREAS WITHIN THE PIT AREA OPENED UP TO REFUSE PLACEMENT.

INTERIM IN-PIT DITCHES WILL BE FUNCTIONAL DURING REFUSE PLACEMENT OPERATIONS. THESE DITCHES ARE TO BE PLACED AT THE UPHILL TOE OF A PHASE WITHIN THE APPROVED AREA OR AS NECESSARY TO DIRECT UPSTREAM EXISTING CHANNELIZED FLOW AROUND THE PLACMENT AREA TO THE PERIMETER DITCHES. PRACTICES TO STABILIZE INTERIM DITCHES ARE DESCRIBED IN ILLUSTRATION 50.

SEDIMENT AND RUNOFF CONTROL MEASURES FOR THE SOIL STOCKPILES ARE ADDRESSED IN ILLUSTRATION 44.

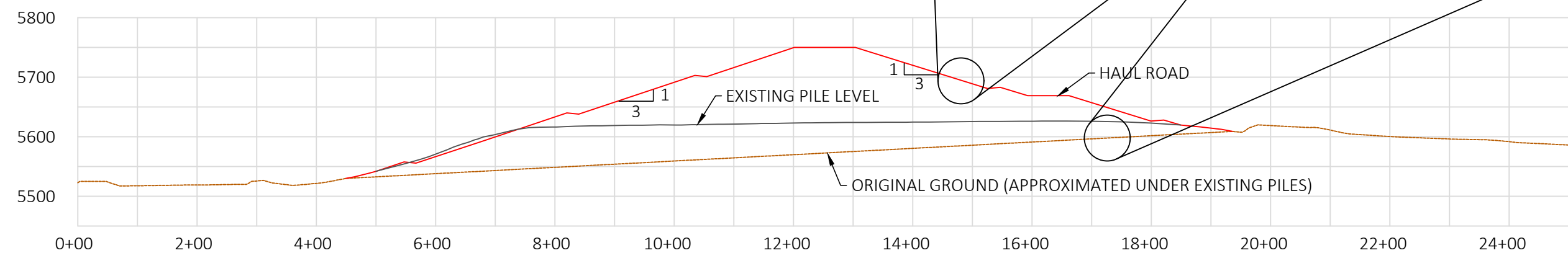
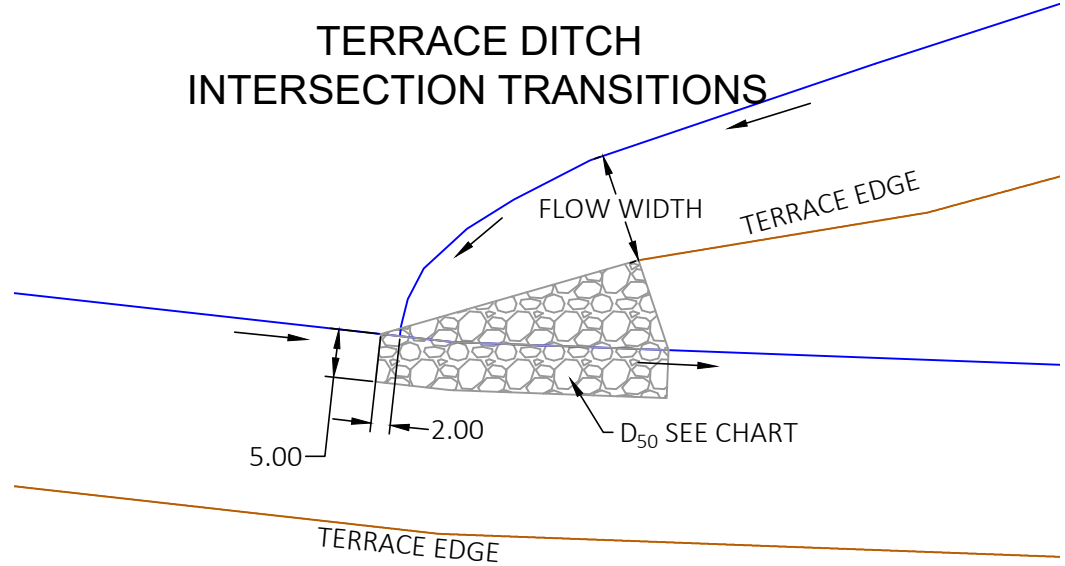
GEOTECHNICAL STABILITY ANALYSIS DEMONSTRATES ADEQUATE STABILITY WITH 3H:1V SLOPES (ILLUSTRATION 42C)

REVERSE SEQUENCING OF TOPSOIL/SUBSOIL PLACMENT UPON RECLAMATION IS BASED ON OBSERVED RESPONSE OF ANNUAL WEEDS, PRIMARILY CHEATGRASS, AND PERENNIAL VEGETATION TO THESE GROWTH MEDIUM.

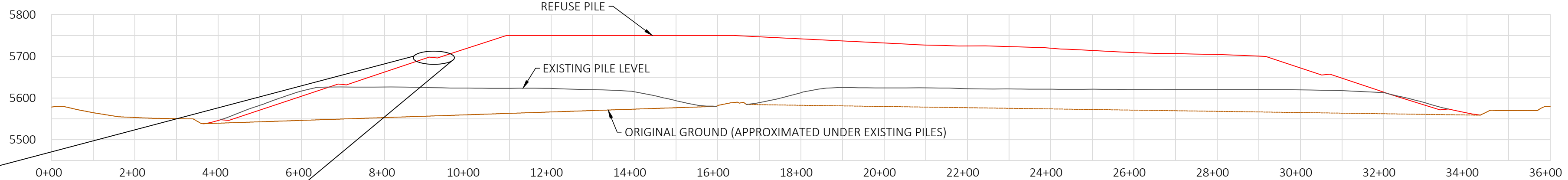


TERRACE DITCH TRANSITION RIP RAP				
Terrace Channel	Flow Width (ft)	Transition Rip Rap D ₅₀ (in)	D _{min}	D _{max}
1	8	2	1	3
4	11	2	1	3
5	9	2	1	3
6	11	2	1	3
7	6	1	0.5	2

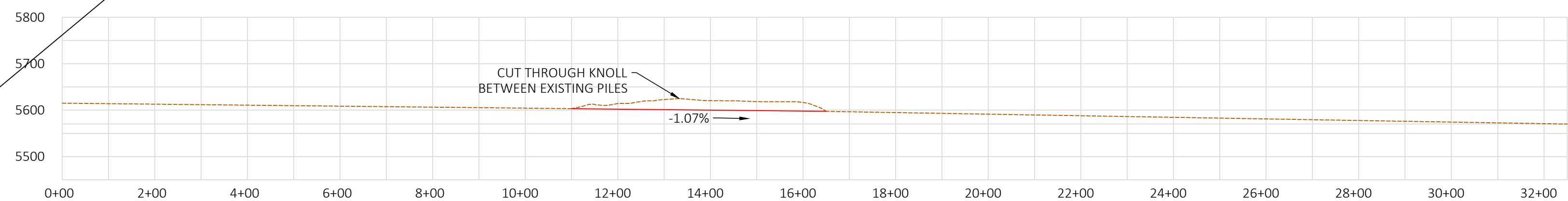
- LEGEND
- PERIMETER / DIVERSION DITCHES
 - TERRACE CHANNELS
 - PILE DESIGN MAJOR CONTOURS (25' INTERVAL)
 - PILE DESIGN MINOR CONTOURS (5' INTERVAL)
 - EXISTING GROUND MAJOR CONTOURS (25' INTERVAL)
 - EXISTING GROUND MINOR CONTOURS (5' INTERVAL)
 - SUBWATERSHED BOUNDARIES
 - FLOW DIRECTION ARROWS
 - NODES INDICATING BEGINNING AND END OF STRUCTURE AND STRUCTURE # FROM SEDCAD MODEL
 - 17 SEDCAD STRUCTURE NUMBER
 - E WATERSHED LETTER
 - 5778 SPOT ELEVATION



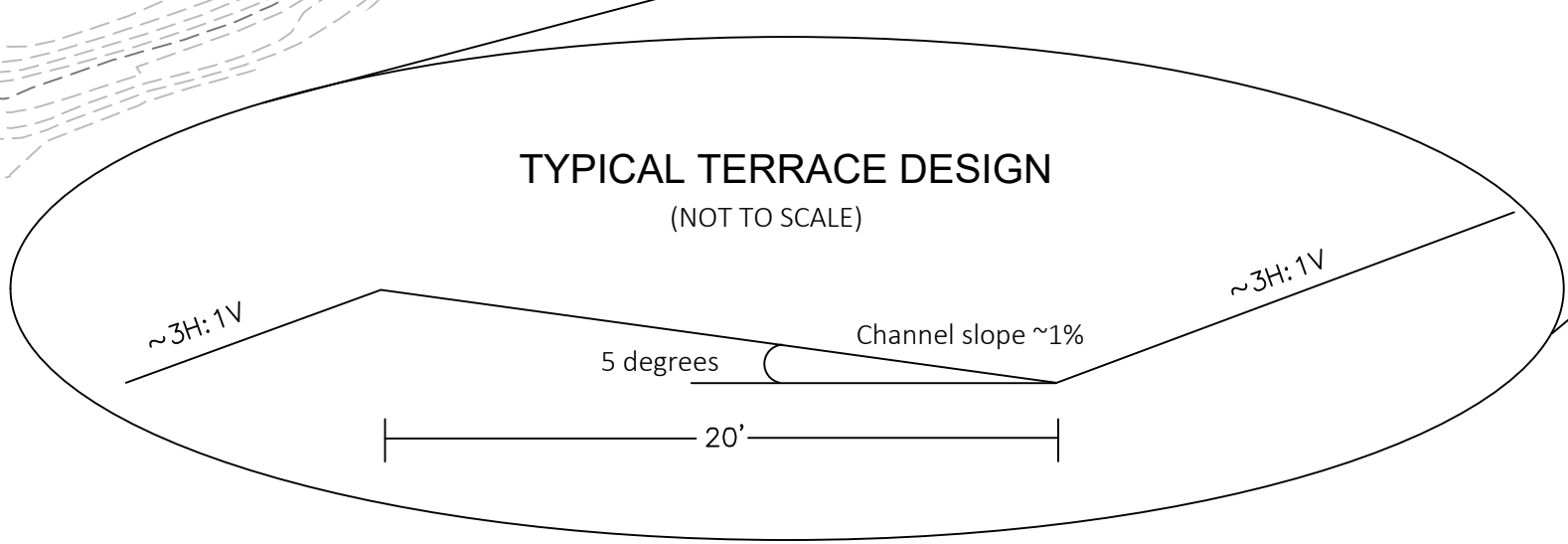
CROSS SECTION A



CROSS SECTION B



STRUCTURE 8 PROFILE



DESERADO MINE
3607 COUNTY ROAD 65
RANGELY, CO 81648

BLUE MOUNTAIN ENERGY, INC.

MAP 165
REFUSE AREA 2345 PRELIMINARY PLAN

Dwg location: O:\Engineering Projects\Refuse Area 2345\Drawings\Map165 Combination Pile 2345.dwg
Dwg by: JLT
Date: 4/4/22
Appr. by:
Check by:
Scale: 1"=200'
Sheet: 1

No.	Revision	Date	Check by