



**Newmont Corporation**  
Cripple Creek & Victor Gold Mining Company  
100 North 3<sup>rd</sup> St  
P.O. Box 191  
Victor, CO 80860  
www.newmont.com

April 5, 2022

**ELECTRONIC DELIVERY**

Mr. Elliott Russell  
Environmental Protection Specialist  
Colorado Department of Natural Resources  
Division of Reclamation, Mining and Safety  
Office of Mined Land Reclamation  
1313 Sherman Street, Room 215  
Denver, Colorado 80203

**RE: Permit No. M-1980-244; Cripple Creek & Victor Gold Mining Company; Cresson Project;  
Schist Island Backfill Weekly Report**

Mr. Russell,

In accordance with Amendment Thirteen Second Adequacy Review Response, comment number 73; Newmont Corporation's Cripple Creek and Victor Gold Mining Company (CC&V) hereby provides a weekly report documenting backfilling activities completed in Schist Island during Week 29 of the project, covering the period from 3/19/22 to 3/25/22.

Should you require further information please do not hesitate to contact Katie Blake at 719-851-4048 or Justin Raglin at [Justin.Raglin@newmont.com](mailto:Justin.Raglin@newmont.com)

Regards,

DocuSigned by:  
  
A5AA058117F54C4...

Justin Raglin  
Sustainability & External Relations Manager  
Cripple Creek and Victor Gold Mining Company

EC: E. Russell – DRMS  
M. Cunningham – DRMS  
M. Crepeau – Teller County  
L. Morgan – Teller County  
J. Raglin – CC&V  
K. Blake – CC&V  
M. Bujenovic – CC&V  
N. Townley – CC&V

Enc (1)

WE2022.03.25 VLF2 Phase 3 Weekly Report\_Week 30

File: S:\CrippleCreek\na.cc.admin\Environmental\New File Structure\2-Correspondence\DNR\DRMS\2022\Outgoing

## ATTACHMENT 1

Newmont Mining Corporation  
 Cripple Creek & Victor Gold Mine  
 2022 Quality Assurance Oversight  
 NewFields Job No. 475.0106.056  
 Week Ending Friday, March 25, 2022



## FIELD WEEKLY PROGRESS REPORT

**PROJECT:** VALLEY LEACH FACILITY (VLF2) PHASE 3 CQA HIGH COMPACTION BACKFILL  
**SITE:** CRIPPLE CREEK & VICTOR GOLD MINE (COLORADO)  
**CONTRACTOR:** NEWMONT CC&V MINING OPERATIONS  
**WEEK ENDING:** FRIDAY, MARCH 25, 2022

**REPORTING PERIOD: 03.19.2022 THROUGH 03.25.2022**

Days	Sat	Sun	Mon	Tue	Wed	Thu	Fri
Work Shifts	D/N	D/N	D/N	D/N	D/N	D/N	D/N
D – DAYSHIFT		N – NIGHTSHIFT			W – WEATHER		

### AMBIENT TEMPERATURE RANGES AND WEATHER CONDITIONS:

HIGHS: 50°F TO 26°F

LOWS: 33°F TO 10°F

CLOUD COVER: PARTLY TO MOSTLY CLOUDY

PRECIPITATION: SNOW 3/21; 1"

WIND: WIND GUSTS FROM 10 TO 50 MPH

### NEWFIELDS PERSONNEL ONSITE:

Personnel	Sat	Sun	Mon	Tue	Wed	Thu	Fri
	Mar 19	Mar 20	Mar 21	Mar 22	Mar 23	Mar 24	Mar 25
Jay Moore	-	-	-	-	-	PCE	-
Roxanne Li	-	-	-	-	-	-	-
Tyler Wendlandt	LS	LS	LS	LS	LS	LS	-
George Fry	-	-	-	-	-	-	-
PR – Project Resident; LS – Lead Soils Technician; LG – Lead Geosynthetics; ST – Soils Technician; GT – Geosynthetics Technician; LT – Laboratory Technician; PCE – Project Certifying Engineer							

## 1.0 MINING OPERATIONS

### 1.1 Schist Island High Compaction Back Fill

CC&V completed the placement of the 10,080', 10,085', 10,090', and 10,095' elevation high compaction backfill lifts. Run of Mine material was loaded from the Schist Island Pit and



West/South Cresson Pit and hauled by 793 haul trucks to the high compaction backfill. Overburden material was hauled from the PSSA floor stockpile to the high compaction backfill. A D10 dozer placed material in a 5 foot GPS controlled leading edge lift. The haulage traffic travelled over the entirety of the fill, splitting tracks with each loaded haul truck. The D10 leveled out the windrows along the pit wall and pushed structural material into any surface irregularities along the pit wall. Any 5 foot lift or lift section that was placed with 777 haul trucks received extra wheel rolling compaction from a loaded 793 haul truck upon lift or lift section completion.

CC&V shovel and loader operators monitored the Run of Mine material size being sent to the high compaction backfill. Out of specification loads containing 2 foot plus sized material were sent to the ECOSA stockpile. 2 foot plus sized material that was not removed at the dig-face by the shovel or loader operators was removed by a D10 dozer during material placement. The oversize material was stockpiled by the dozer out of the way above the current lift on the haul road against the pit high wall. A 994 loader loaded a 777 haul truck with the unsuitable material and it was then hauled to the ECOSA stockpile.

CC&V continued the grading of the PSSA. Overburden material was cut from the northern slope of the PSSA approximately between Stations 13+00 and 24+00 (dwg. A105). The Overburden material was cut from compacted fill by D10 dozers to slope grade and stockpiled in the bottom of the PSSA for removal. A 994 loader loaded 777 and 793 haul trucks with the overburden material and it was hauled to the high compaction backfill. Once the 10,095' lift was complete the overburden material was hauled to the ECOSA stockpile.

CC&V Drill and Blast operations blasted the YAS Marina underground working area located to the south of the PSSA Station 22+00 (dwg. A105) The unique individual underground working identification numbers assigned to voids in the area for Quality Assurance purposes will be UG6700-UG6710.

## **2.0 MEETINGS AND COMMUNICATIONS**

NewFields personnel met with Mine Operations Supervision about the high compaction backfill progress and material quality.

NewFields personnel spoke with Mine Operations Supervision and Personnel about the placement of high compaction backfill with 777 haul trucks. 777 haul trucks are not suitable for utilization in the method compaction specification of 5' lifts, 793 haul trucks are required to wheel roll any 5' lift placed by the 777 trucks for final approval.

## **3.0 MISCELLANEOUS, ISSUES, AND CONCERNS**

- NewFields personnel completed the approval of the 10,080', 10,085', 10,090', and 10,095' lifts. Visual inspection and the method compaction specification were utilized to approve the lifts.



- A progress map provided by Newmont CC&V was utilized to create the attached figures showing high compaction backfill progress.
- High compaction backfill was completed to the 10,095' elevation during the week. High compaction backfill was halted on 03/22/22 and will be resumed (if necessary) once a review of the VLF2 P3 grading is completed CC&V and NewFields.

#### 4.0 PHOTOGRAPHS



**March 21, 2022 – High Compaction Backfill placement progress (TW)**





**March 23, 2022 – PSSA Overburden cut progress (TW)**




**March 24, 2022 – PSSA Overburden cut progress (TW)**

Newmont Mining Corporation  
 Cripple Creek & Victor Gold Mine  
 2022 Quality Assurance Oversight  
 NewFields Job No. 475.0106.056  
 Week Ending Friday, March 25, 2022



**Report Review and Approval:**

Role	Name	Signature
<b>CQA Monitor/Report Prepared By</b>	<b>Tyler Wendlandt</b>	
<b>Or CQA Designee</b>		
<b>Project Engineer</b>	<b>Jeff Gaul</b>	DocuSigned by:  1122B343C4A54DD...
<b>Or Projects Designee</b>		

**Attachments:**

Figure 1 – Section Approval Progress 10,080' Lift (Map Date 03/12/22)

Figure 2 – Section Approval Progress 10,085'; 10,090', 10,095' Lifts (Map Date 03/12/22)



Figure 1: Section Approval Progress 10,080' Lift

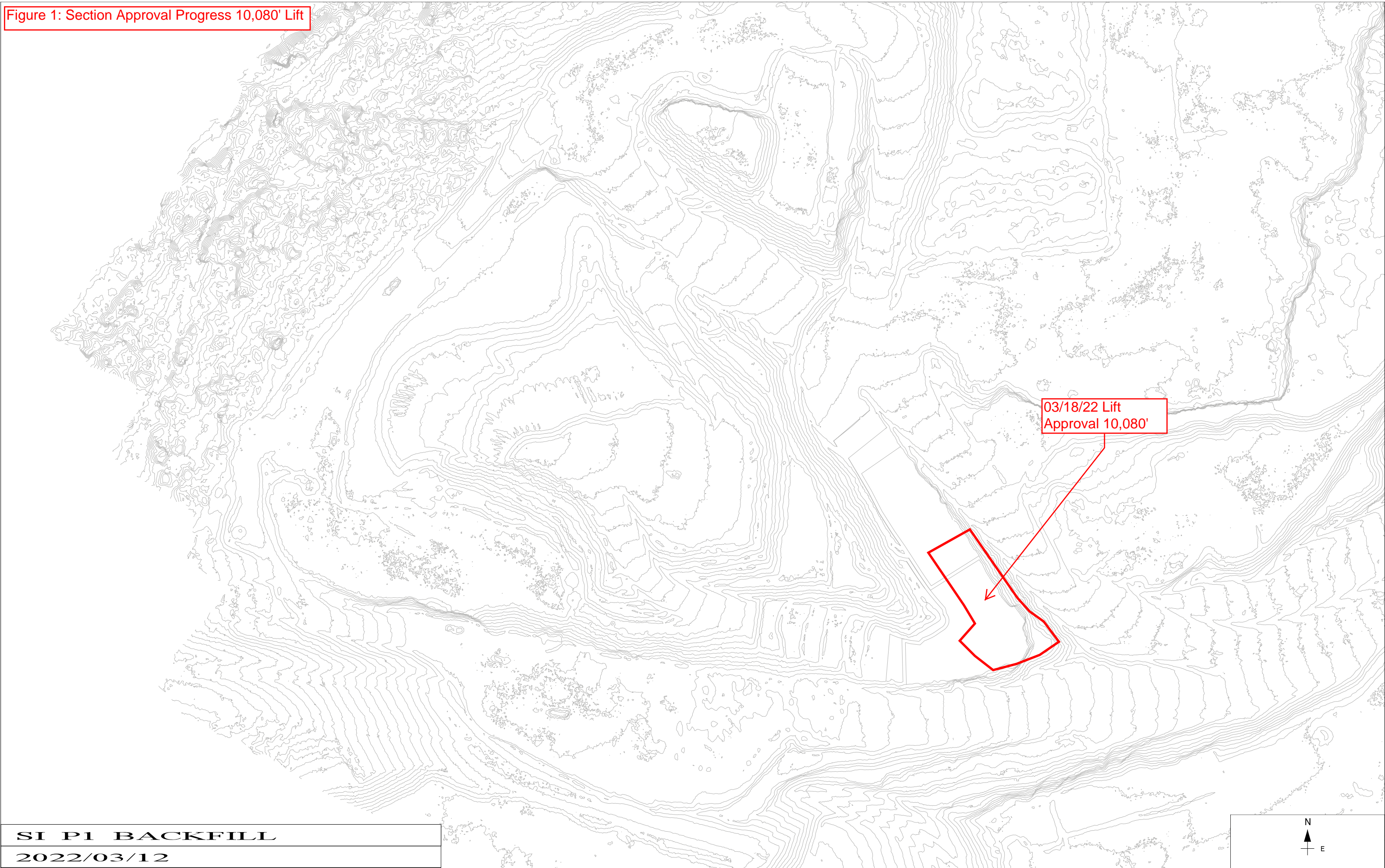




Figure 2: Section Approval Progress 10,085', 10,090', 10,095' Lifts

