



Newmont Corporation
Cripple Creek & Victor Gold Mining Company
100 North 3rd St
P.O. Box 191
Victor, CO 80860
www.newmont.com

March 31, 2022

ELECTRONIC DELIVERY

Mr. Elliott Russell
Environmental Protection Specialist
Colorado Department of Natural Resources
Division of Reclamation, Mining and Safety
Office of Mined Land Reclamation
1313 Sherman Street, Room 215
Denver, Colorado 80203

**RE: Permit No. M-1980-244; Cripple Creek & Victor Gold Mining Company; Cresson Project;
Schist Island Backfill Weekly Report**

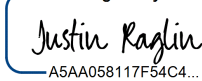
Mr. Russell,

In accordance with Amendment Thirteen Second Adequacy Review Response, comment number 73; Newmont Corporation's Cripple Creek and Victor Gold Mining Company (CC&V) hereby provides a weekly report documenting backfilling activities completed in Schist Island during Week 29 of the project, covering the period from 3/12/22 to 3/18/22.

Should you require further information please do not hesitate to contact Katie Blake at 719-851-4048 or Justin Raglin at Justin.Raglin@newmont.com

Regards,

DocuSigned by:


A5AA058117F54C4...

Justin Raglin
Sustainability & External Relations Manager
Cripple Creek and Victor Gold Mining Company

EC: E. Russell – DRMS
M. Cunningham – DRMS
M. Crepeau – Teller County
L. Morgan – Teller County
J. Raglin – CC&V
K. Blake – CC&V
M. Bujenovic – CC&V
N. Townley – CC&V

Enc (1)

WE2022.03.18 VLF2 Phase 3 Weekly Report_Week 29

File: S:\CrippleCreek\na.cc.admin\Environmental\New File Structure\2-Correspondence\DNR\DRMS\2022\Outgoing

ATTACHMENT 1

Newmont Mining Corporation
 Cripple Creek & Victor Gold Mine
 2022 Quality Assurance Oversight
 NewFields Job No. 475.0106.056
 Week Ending Friday, March 18, 2022



FIELD WEEKLY PROGRESS REPORT

PROJECT: VALLEY LEACH FACILITY (VLF2) PHASE 3 CQA HIGH COMPACTION BACKFILL
SITE: CRIPPLE CREEK & VICTOR GOLD MINE (COLORADO)
CONTRACTOR: NEWMONT CC&V MINING OPERATIONS
WEEK ENDING: FRIDAY, MARCH 18, 2022

REPORTING PERIOD: 03.12.2022 THROUGH 03.18.2022

Days	Sat	Sun	Mon	Tue	Wed	Thu	Fri
Work Shifts	D/N	D/N	D/N	D/N	D/N	D/N	D/N
D – DAYSHIFT		N – NIGHTSHIFT			W – WEATHER		

AMBIENT TEMPERATURE RANGES AND WEATHER CONDITIONS:

HIGHS: 43°F TO 25°F

LOWS: 26°F TO 10°F

CLOUD COVER: PARTLY TO MOSTLY CLOUDY

PRECIPITATION: SNOW 3/17 TRACE

WIND: WIND GUSTS FROM 10 TO 40 MPH

NEWFIELDS PERSONNEL ONSITE:

Personnel	Sat	Sun	Mon	Tue	Wed	Thu	Fri
	Mar 12	Mar 13	Mar 14	Mar 15	Mar 16	Mar 17	Mar 18
Jay Moore	-	-	-	-	-	-	-
Roxanne Li	-	-	-	-	-	-	-
Tyler Wendlandt	LS	-	LS	LS	LS	LS	LS
George Fry	-	-	-	-	-	-	-
PR – Project Resident; LS – Lead Soils Technician; LG – Lead Geosynthetics; ST – Soils Technician; GT – Geosynthetics Technician; LT – Laboratory Technician; PCE – Project Certifying Engineer							

1.0 MINING OPERATIONS

1.1 Schist Island High Compaction Back Fill

CC&V completed the placement of the 10,060', 10,065', 10,070', and 10,075' elevation high compaction backfill lifts. CC&V began the placement of the 10,080' elevation high compaction



backfill lift. Run of Mine material was loaded from the Schist Island Pit and West/South Cresson Pit and hauled by 793 haul trucks to the high compaction backfill. Overburden material was hauled from the PSSA floor stockpile to the high compaction backfill. A D10 dozer placed material in a 5 foot GPS controlled leading edge lift. The haulage traffic travelled over the entirety of the fill, splitting tracks with each loaded haul truck. The D10 leveled out the windrows along the pit wall and pushed structural material into any surface irregularities along the pit wall. Any 5 foot lift or lift section that was placed with 777 haul trucks received extra wheel rolling compaction from a loaded 793 haul truck upon lift or lift section completion.

CC&V shovel and loader operators monitored the Run of Mine material size being sent to the high compaction backfill. Out of specification loads containing 2 foot plus sized material were sent to the ECOSA stockpile. 2 foot plus sized material that was not removed at the dig-face by the shovel or loader operators was removed by a D10 dozer during material placement. The oversize material was stockpiled by the dozer out of the way above the current lift on the haul road against the pit high wall. A 994 loader loaded a 777 haul truck with the unsuitable material and it was then hauled to the ECOSA stockpile.

CC&V continued the grading of the PSSA. Overburden material was cut from the northern slope of the PSSA approximately between Stations 13+00 and 24+00 (dwg. A105). The Overburden material was cut from compacted fill by D10 dozers to slope grade and stockpiled in the bottom of the PSSA for removal. A 994 loader loaded 777 and 793 haul trucks with the overburden material and it was hauled to the high compaction backfill.

2.0 MEETINGS AND COMMUNICATIONS

NewFields personnel met with Mine Operations Supervision about the high compaction backfill progress and material quality.

NewFields personnel spoke with Mine Operations Supervision and Personnel about the placement of high compaction backfill with 777 haul trucks. 777 haul trucks are not suitable for utilization in the method compaction specification of 5' lifts, 793 haul trucks are required to wheel roll any 5' lift placed by the 777 trucks for final approval.

3.0 MISCELLANEOUS, ISSUES, AND CONCERNS

- NewFields personnel completed the approval of the 10,060', 10,065', 10,075', and 10,080' lifts. Visual inspection and the method compaction specification were utilized to approve the lifts.
- A progress map provided by Newmont CC&V was utilized to create the attached figures showing high compaction backfill progress.



4.0 PHOTOGRAPHS



March 14, 2022 – High Compaction Backfill placement progress (TW)



March 14, 2022 – PSSA Overburden cut progress (TW)



March 15, 2022 – High Compaction Backfill wheel rolling for compaction (TW)

Report Review and Approval:

Role	Name	Signature
CQA Monitor/Report Prepared By	Tyler Wendlandt	
<i>Or CQA Designee</i>		
Project Engineer	Jeff Gaul	DocuSigned by:  1122B343C4A54DD...
<i>Or Projects Designee</i>		

Newmont Mining Corporation
Cripple Creek & Victor Gold Mine
2022 Quality Assurance Oversight
NewFields Job No. 475.0106.056
Week Ending Friday, March 18, 2022



Attachments:

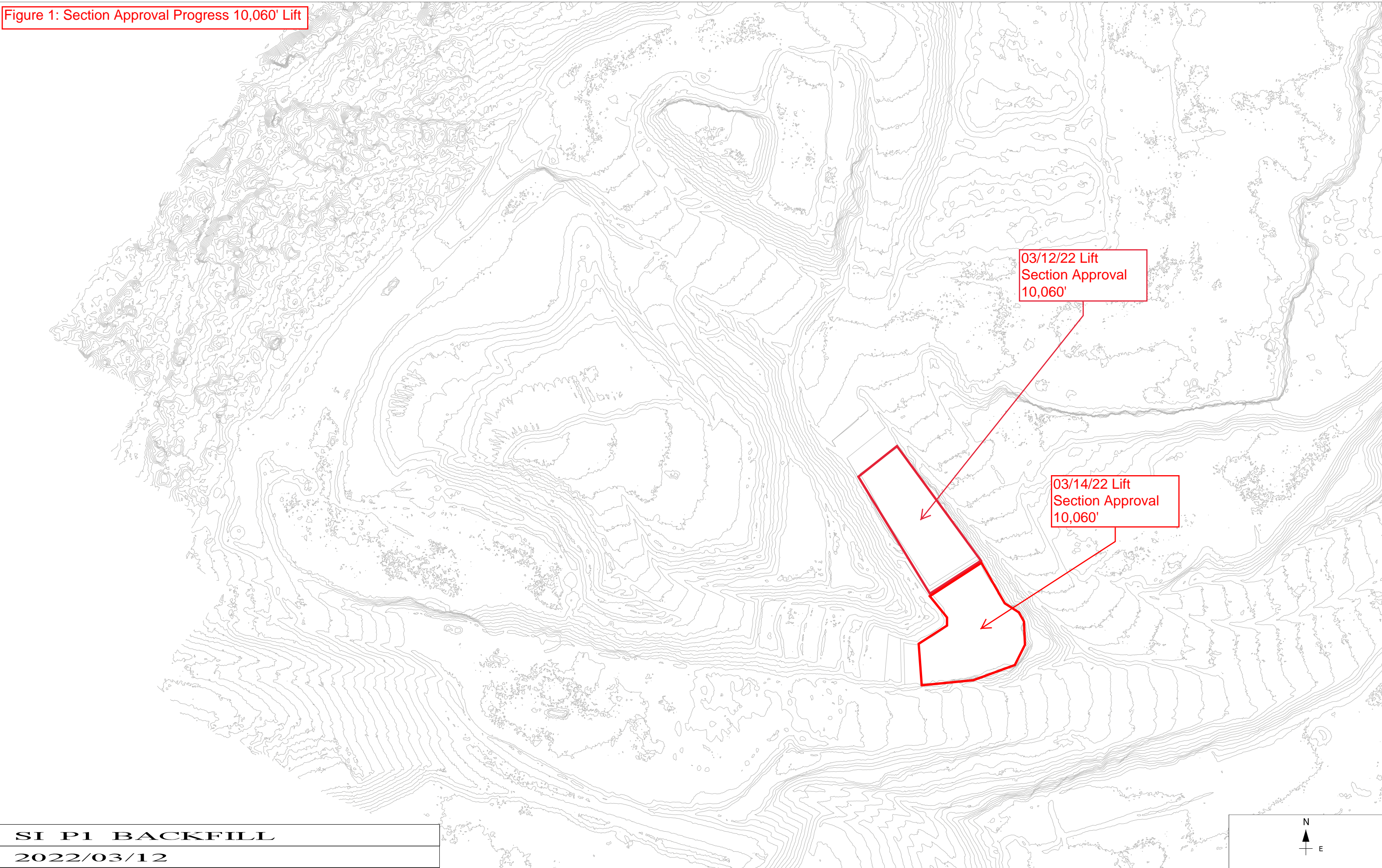
Figure 1 – Section Approval Progress 10,060' Lift (Map Date 03/12/22)

Figure 2 – Section Approval Progress 10,065' Lift (Map Date 03/12/22)

Figure 3 – Section Approval Progress 10,070' Lift (Map Date 03/12/22)

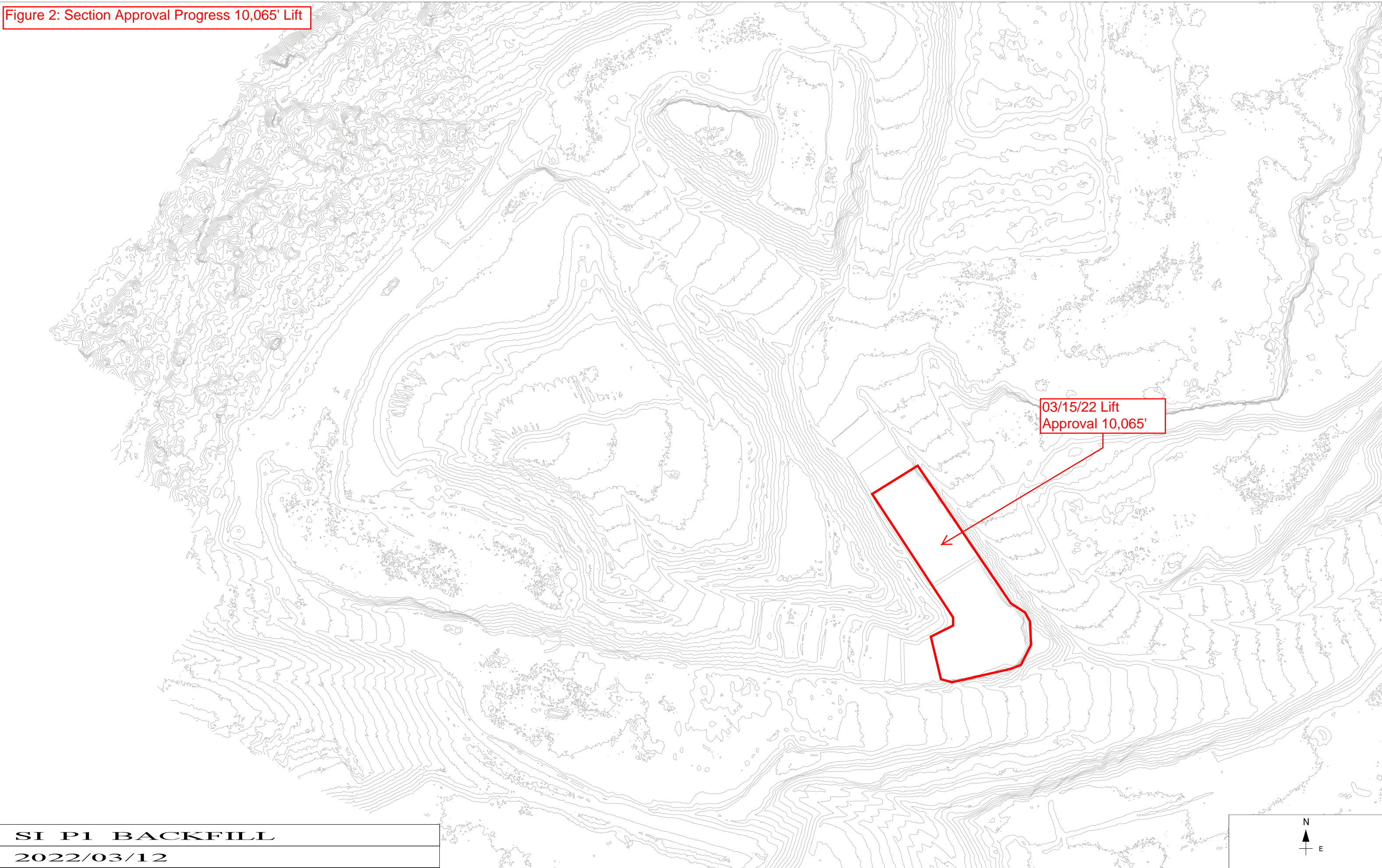
Figure 4 – Section Approval Progress 10,075' Lift (Map Date 03/12/22)

Figure 1: Section Approval Progress 10,060' Lift



SI P1 BACKFILL
2022/03/12

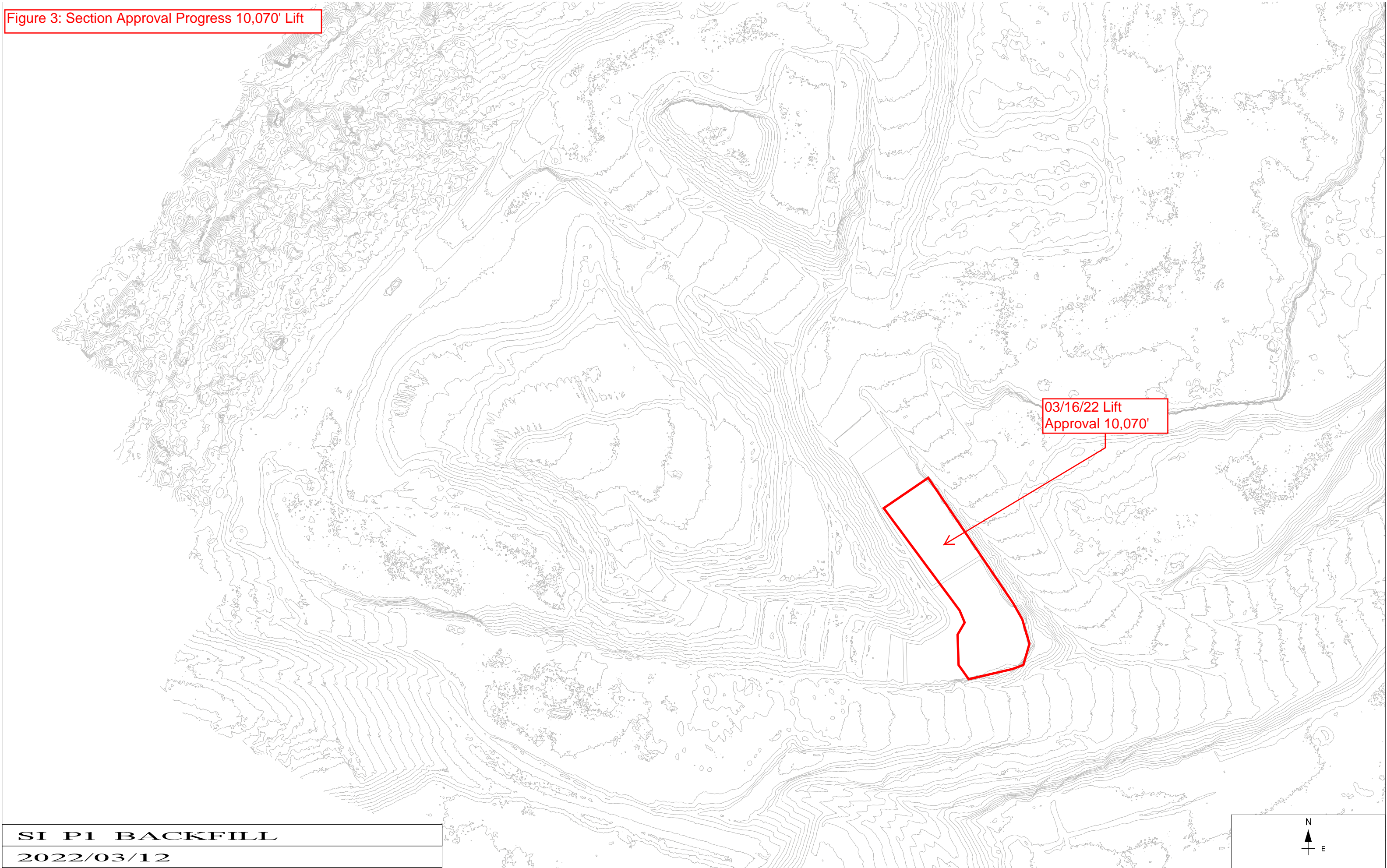
Figure 2: Section Approval Progress 10,065' Lift



SI P1 BACKFILL
2022/03/12



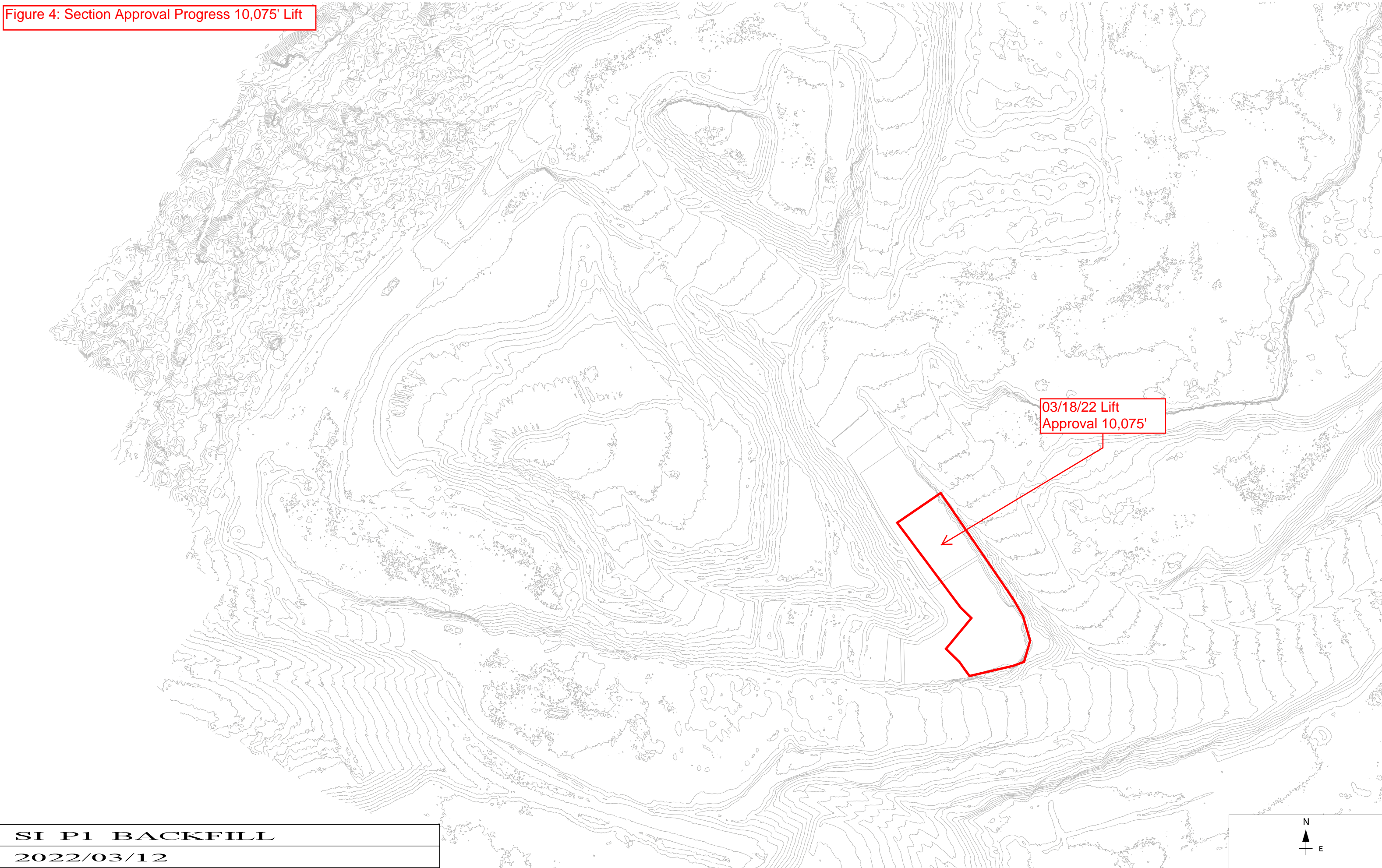
Figure 3: Section Approval Progress 10,070' Lift



SI P1 BACKFILL
2022/03/12



Figure 4: Section Approval Progress 10,075' Lift



SI P1 BACKFILL
2022/03/12

