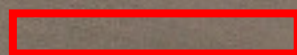
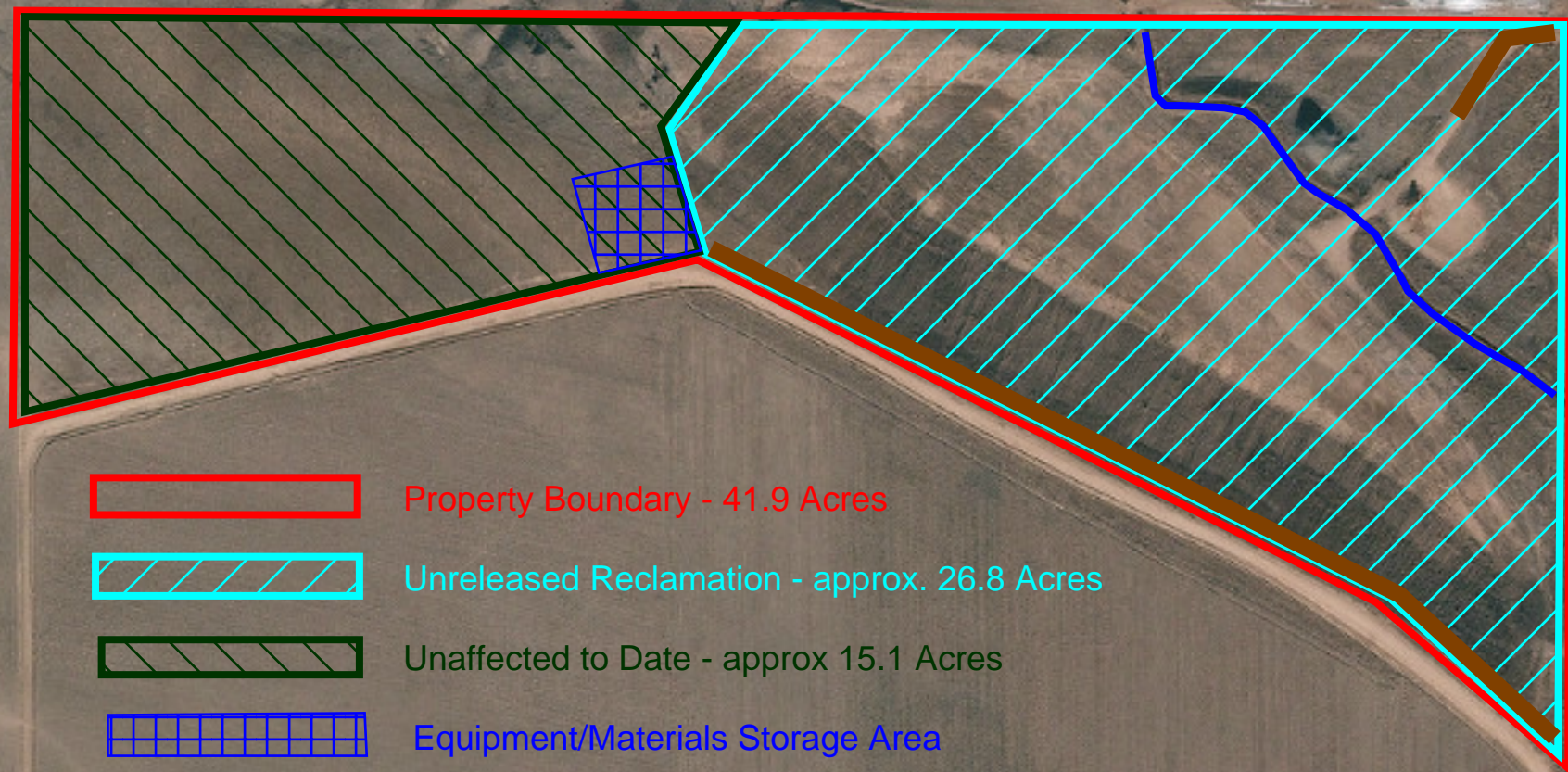


# Larimer County - Horton Pit M-1985-135 2021 Annual Report Map

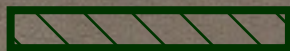
40°50'29"N 105°06'51"W



Property Boundary - 41.9 Acres



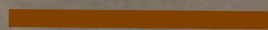
Unreleased Reclamation - approx. 26.8 Acres



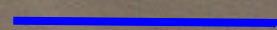
Unaffected to Date - approx 15.1 Acres



Equipment/Materials Storage Area



Access Roads



Irrigation Lateral

100 m

500 ft

CR 80



CR 19